

EUT:PCI TUNER / CAPTURE CARD

FCC ID:H52PT-6006

Puretek Industrial Co., LTD.

User's manual

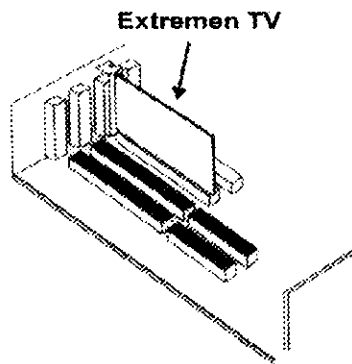
EXHIBIT D

Installations

NOTE : you should install the tuner card before using the camera with your PC.

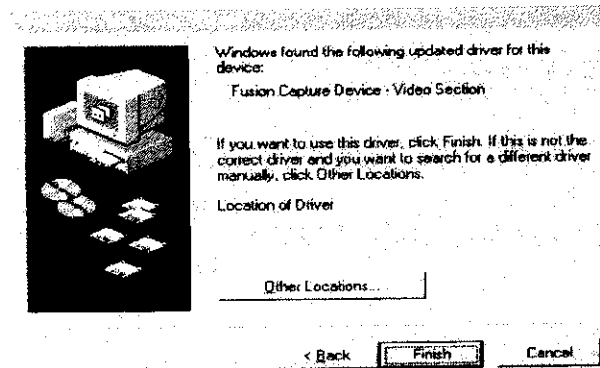
Hardware Installation

1. Make sure that your computer is switched off. Unplug the Power cord from the wall socket. Also turn off all other Peripherals you may have attached to your computer.
2. Remove your computer's cover. Please refer to your computer system manual for specific instructions.
3. Select a free PCI slot. Remove the cover from the slot. Keep the screw. You will be using it in the next step (Fig.1).



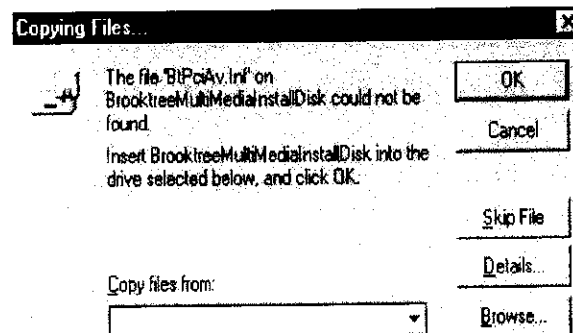
4. Carefully slide the tuner card into the chosen slot. Press firmly on the top of the card to seat it. Fasten the capture card to your system with the screw you removed in the previous step. Replace the computer's cover.

2.The following screen will appear. Click the Finish button.

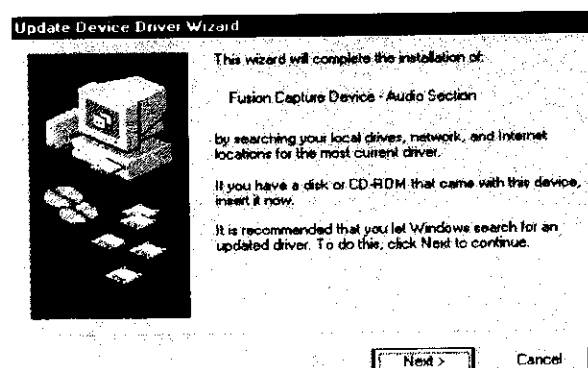


3.You will be prompted to insert the installation disk.

4.Select Browse to specify the location of the driver,(A:\or D:\)
Click OK.



5.The wizard will detect new audio device and The following Screen will appear, click the finish button.



Power : Quit the Extreme TV Application.

Volume: Increase/Decrease the Volume.

Channel: Go to upper or lower active channel.

Source: Select the video source.

Remote: Display the Remote Panel.

Record: Record the image.

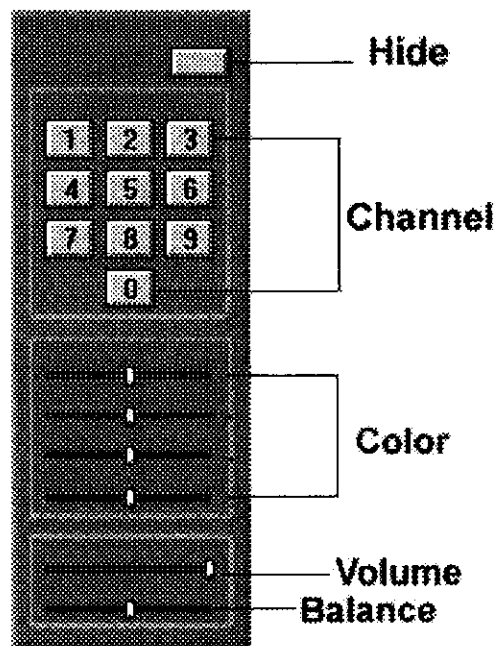
S i z e : Enlarge/Reduce the TV window size.

Minimize: Hide the Extreme TV to startup bar.

M u t e : Turn off the sound.

Freeze: Freeze the TV/Video display.

Remote Panel:



H i d e : Hide the Remote Panel.

Channel: Enter TV number to select TV channel.

C o l o r : Adjust Brightness, Contrast, Saturation and Hue for your Picture.

Volume: Adjust the Volume and balance for audio.

Balance: the volume between two speakers.

Capturing an image

To Capture an image do the following:

- (1) Freeze the TV/video display.
- (2) Click the right mouse button to pop up the setup menu.
- (3) Click the "save still As-----" item. You can type a filename and save the image.

Capturing a video sequence

- (1) Set the Filename/Compression/Size/Frames Rate in the Movie Options item of the Setup Menu.
- (2) Press the "Record" button in the control panel to start Capturing the TV program or video.

Memorizing TV channels

- (1) To memorize all active TV you can run "Auto channel scan" in "channels" item.
- (2) Press "Add this channel" in "channels" to add new channel.
- (3) If you want to delete channel, press "Remove this channel" .

Video Mode

Preview: Simulated data transfer.

Overlay: Video data is directly transferred to the video buffer and video is displayed instantly.

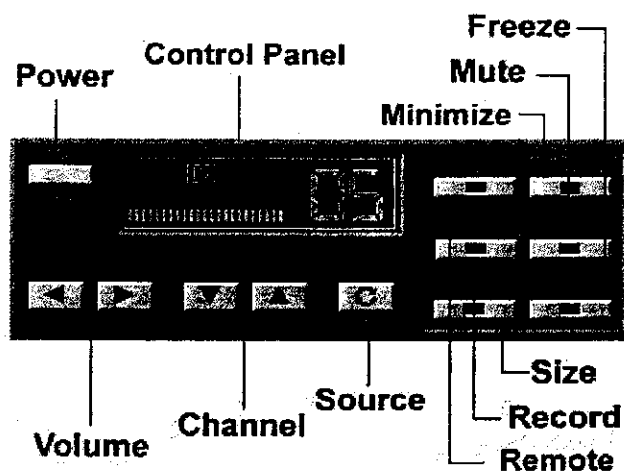
6. Once the files have been copied to your hard drive, the installation is complete.

Navigating in Extreme TV:

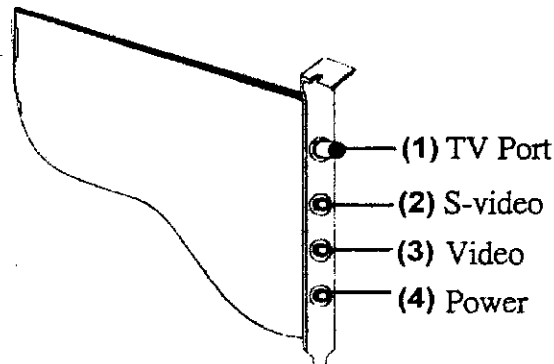
The Extreme TV allows you to watch TV or Video on your PC, You also can use it to capture image.



TV Control Panel:



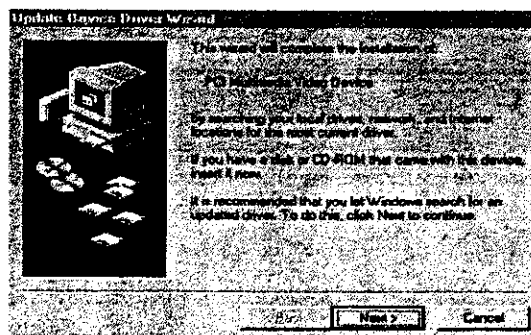
Installing the Tuner card



- (1) Plug the TV antenna coaxial cable to the TV port.
- (2) If you are using a device that is equipped with an S-video cable jack, use that cable instead of the AV cable and plug it into the S-video input connector on the capture card.
- (3) The Video (RCA) connector on your PC camera should be Connected to the composite video input connector to the Tuner card.
- (4) Attach the plug to the power connector on your tuner card.

Tuner card Driver Installation

1. Power on your system. As Windows 95 Starts, it will detect the new device (Fusion Capture Device) and a dialog box will appear asking you to locate the driver. Place the CD containing the driver into your CD-ROM drive.



FEDERAL COMMUNICATIONS COMMISSION

This device complies with Part 15 of the FCC Rules. Operation is subject to the following two conditions : (1) this device may not cause harmful interference, and (2) this device must accept any interference received, including interference that may cause undesired operation.

NOTE

This equipment has been tested and found to comply with the limits for a Class B digital device, pursuant to Part 15 of the FCC Rules. These limits are designed to provide reasonable protection. This equipment generates, uses and can radiated radio frequency energy and, if not installed and used in accordance with the instructions, may cause harmful interference to radio communications. However, there is no guarantee that interference will not occur in a particular installation. If this equipment does cause harmful interference to radio or television reception, which can be determined by turning the equipment off and on, the user is encouraged to try to correct the interference by one or more of the following measures:

- Reorient or relocate the receiving antenna.
- Increase the separation between the equipment and receiver.
- Connect the equipment into an outlet on a circuit different from that to which the receiver is connected.
- Consult the dealer or an experienced radio/TV technician for help.

Shielded interface cables must be used in order to comply with emission limits.

Changes or modifications not expressly approved by the party responsible for compliance could void the user's authority to operate the equipment.