

# **PURETEK INDUSTRIAL CO., LTD**

FCC I D : H52PT-6010

**USB Expansion PCI CARD**

Installation Guide

## **FEDERAL COMMUNICATIONS COMMISSION**

This device complies with Part 15 of the FCC Rules. Operation is subject to the following two conditions: (1) this device may not cause harmful interference, and (2) this device must accept any interference received, including interference that may cause undesired operation.

### **NOTE**

This equipment has been tested and found to comply with the limits for a Class B digital device, pursuant to Part 15 of the FCC Rules. These limits are designed to provide reasonable protection. This equipment generates, uses and can radiate radio frequency energy and, if not installed and used in accordance with the instructions, may cause harmful interference to radio communications. However, there is no guarantee that interference will not occur in a particular installation. If this equipment does cause harmful interference to radio or television reception, which can be determined by turning the equipment off and on, the user is encouraged to try to correct the interference by one or more of the following measures:

- Reorient or relocate the receiving antenna.
- Increase the separation between the equipment and receiver.
- Connect the equipment into an outlet on a circuit different from that to which the receiver is connected.
- Consult the dealer or an experienced radio/TV technician for help.

Shielded interface cables must be used in order to comply with emission limits.

Changes or modifications not expressly approved by the party responsible for compliance could void the user's authority to operate the equipment.

## Introduction

USB Expansion PCI Card is an interface card that provide others USB devices to connect onto the computer, this card compliant with PCI 2.1 standard. With this card, you can surf into the USB world without any problem.

## Features

- w USB solution.
- w USB Specification V1.0 compatible.
- w PC Specification V2.1 compatible.
- w OHCI/UHCI Standards.
- w Dual ports.
- w 500mA bus powered supported by each piece.
- w 12Mbps bandwidth per package.
- w Expandable with 2 cards in one PC.
- w Supports low-speed and high-speed devices.
- w PLUG & PLAY compatible with windows 95  
OSR2 / Windows 98 and higher.
- w CE and FCC approved.

## System Requirements

- w PCI Slot (minimum 1 slot).
- w Windows 95 OSR2 / Windows 98 and higher.

## Package Checklist

The package contains the following items :

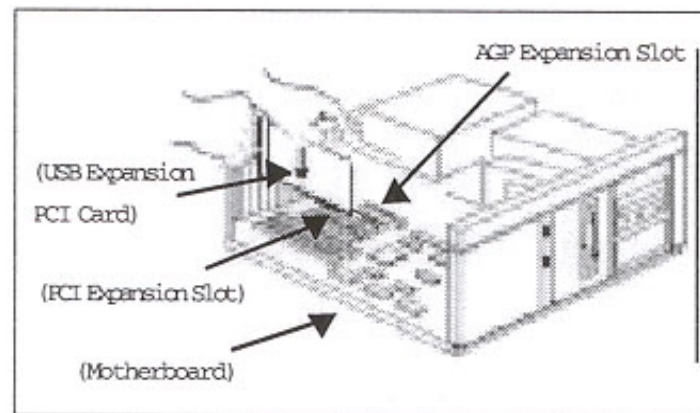
wOne USB Expansion PCI Card.

wOne Installation Guide.

## Hardware Installation

**Step 1** Make sure that your computer is switched off.  
Unplug the power cord from the wall socket,  
select a free PCI slot.

**Step 2** Carefully slide the USB expansion PCI card into  
the selected PCI slot and make sure that it is  
tighten. (Show as following figure)



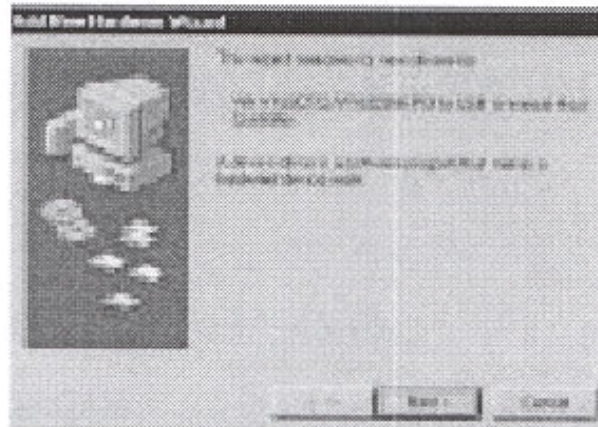
**Step 3** Fix the card and screw it up. Turn on the  
computer.

**Step 4:** Win95/98 will auto detect the new hardware,  
please refer to the page of Installation Proc-  
edures for Windows <sup>TM</sup>98.

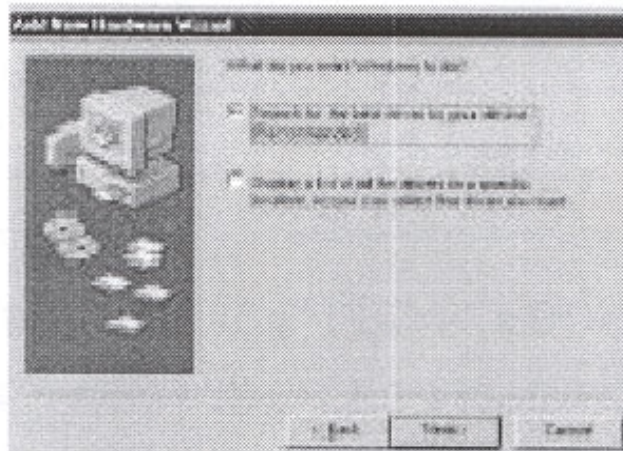
**Remarks** The USB Expansion PCI Card support Hot  
Plug and Play features, no reboot is  
necessary when adding a peripherals to  
the computer.

## Installation Procedures for Windows <sup>TM</sup> 98

1. When hardware installation complete, Windows will auto detect your USB Expansion PC IC card, the following dialog box will appear, click "Next".

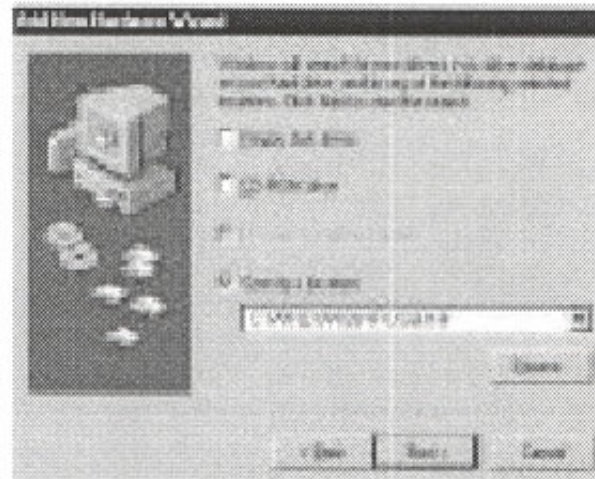


2. Select "Search for the best driver for your device (Recommended)" option, then click "Next".

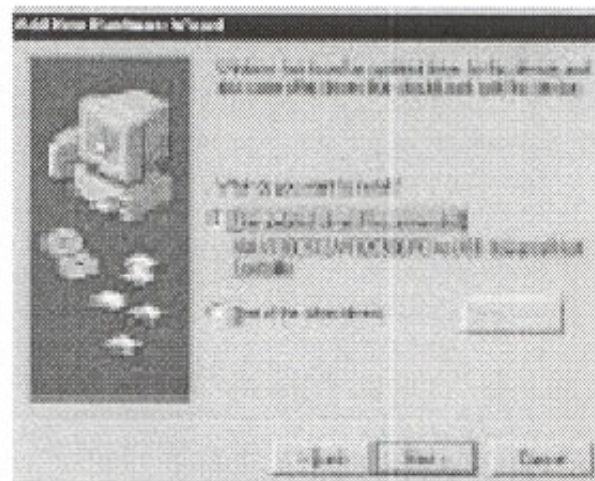




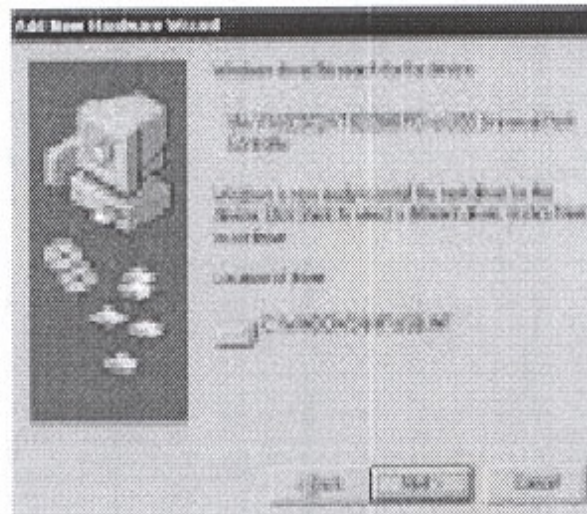
3 Please insert "Windows 98" CD into CD-ROM, select CD-ROM drive or specify a location, click "Next" to start and search.



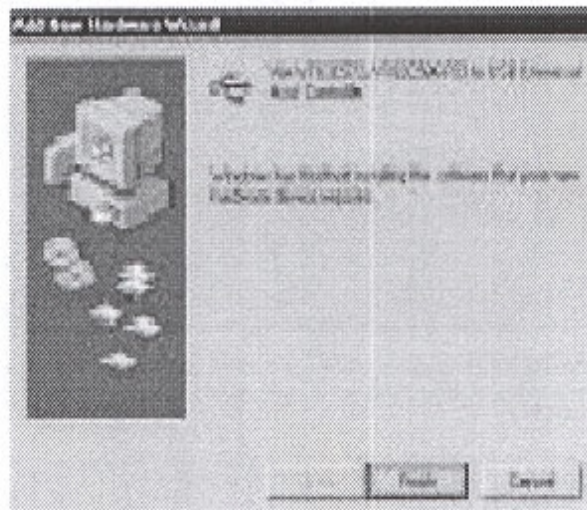
4 Click "Next" to continue.



5 The following message will appear, click "Next".



6 Click "Finish ", Window has finished installing the device.





## Table of Contents

Introduction — ①

Features — ①

System Requirements — ①

Package checklist — ②

Hardware Installation — ③

Installation Procedures for  
Windows <sup>TM</sup> 98 — ④