

Phanta-Music

User's Manual

Ver. A 8030 - 0005

FCC Compliance

To comply with the applicable sections of FCC Rules and Regulations, Parts 68 and 15, please follow these instructions:

- Do not connect your modem to a party line or to a coin-operated telephone.
- If your modem should cause a problem on the telephone line, it should be disconnected from the line until it can be determined whether the modem or another device on the phone line caused the problem.
- Only the manufacturer can make repairs to the modem. Other repair methods will void your warranty.
- If you have an external modem, use a properly constructed shielded cable to connect it to your computer.
- If your telephone company asks for the following information, please make it available:
 - Modem manufacturer
 - Model of modem

FCC Part 15

Operation is subject to the following two conditions:

1. This device may not cause harmful interference.
2. This device must accept any interference received including interference that may cause undesired operation.

This equipment has been tested and found to comply with the limits for a Class B digital device, pursuant to Part 15 of the FCC Rules. These limits are designed to provide reasonable protection against harmful interference when the equipment is operated in a residential installation. This equipment generates, uses, and can radiate frequency energy and if not installed and used in accordance with the instructions, may cause harmful interference to radio communications. However, there is no guarantee that the interference to radio or television reception, which can be determined by turning the equipment off and on, the user is encouraged to try to correct the interference by one or more of the following measures:

- Reorient or relocate the receiving antenna.
- Increase the separation between the equipment and receiver.

If the telephone company suspects a problem with your telephone line is related to an add-on electronic device, such as your modem, they have the right to temporarily suspend your service. It is your responsibility to remove from the telephone line any malfunctioning electronic communications equipment to avoid damage to the telephone system.

If your equipment causes harm to the telephone network, the telephone company may discontinue your service temporarily. If possible, they will notify you in advance. But if advance notice is not practical, you will be notified as soon as possible. You will be informed of your right to file a complaint with the FCC. Your telephone company may make changes to its facilities, equipment, operations, or procedures that could affect the proper functioning of your equipment. If they do, you will be notified in advance to give you an opportunity to maintain uninterrupted telephone service.

The telephone company may ask that you disconnect this equipment from the network until the problem has been corrected or until you are sure that the equipment is not malfunctioning.

This equipment may not be used on coin service provided by the telephone company. Connection to party lines is subjected to state tariffs.

If you experience trouble with this telephone equipment, please contact your place of purchase for information on obtaining service or repairs.

Table of Contents

Chapter 1 Introduction

Features	1
System Requirements	2

Chapter 2 Installations

Phanta-Music package	3
Hardware Installation	4
The Installation of Smart Media Card (Option)	6
Installation Procedures for Win 98	7

Chapter 3 Phanta-Music Package

Phanta-Music application program..	10
Phanta-Music Description.....	12
Phanta-Music LED Display.....	14
Phanta-Music Precautions.....	16

Introduction

Welcome to the Phanta-Music World. Phanta-Music brings you the latest melody feeling, its sound quality brings you the most fantastic experience on having a portable walkman. Instead of buying a cassette, Phanta-Music's provide you a way to download the songs from Internet, no more cassette is needed. With Anti-shocking features, Phanta-Music can bring along with you in anyway, anytime. Phanta-Music satisfies on all your music requirement.

Features

- ✍ Palm-sized and Shock Resistant
- ✍ CD Digital-quality music
- ✍ Anti-Noise capability
- ✍ Stereo surround sound
- ✍ Repeat Playing
- ✍ High Speed transfer rate with USB port (12Mbps Max)
- ✍ Low power consumption

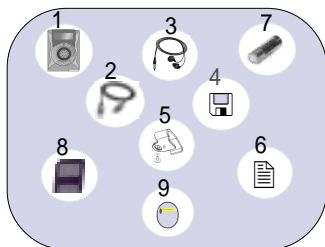
System Requirements

- ✎ Pentium 166MHz or faster
- ✎ Windows 98
- ✎ 20MB free hard disk space
- ✎ One available USB port (USB driver version 1.0 above)
- ✎ One installed sound card
- ✎ CD-ROM drive

Installations

This chapter is the description of the package contents, software and hardware installation procedure, beside that there is a description about the Smart Media Card, please read it carefully.

Phanta-Music package:



1. Phanta-Music
2. USB Cable
3. Stereo Earphones
4. Installation & Phanta-Music
Software Disk
5. Holster
6. User Manual
7. AA type DC battery
8. Smart Media Card(Optional)
9. Pouch(Optional)

Hardware Installation

Step1: Switch on your computer.



Step2: Place the battery properly on the right place, shown as figure.



Place the batteries into the battery slot properly

Step3: After the computer enter to the win98 Plug in the transmission line to Phanta-Music's USB port which is located on the side panel, shown as figure 1, the other side of the transmission line has to connect to the USB port of the computer, shown as figure 2.

Remarks

Please aware that you have to reverse the USB adapter () just show as figure ().

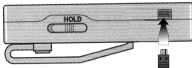


figure 1

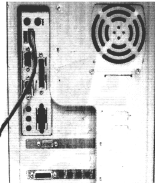
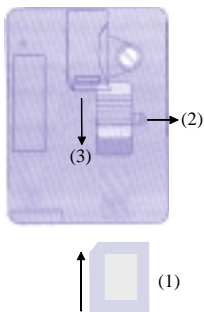


figure 2

Step4: At the mean time, the windows will notify that there is a new hardware found, please refer to Page 7(Installation Procedures for Windows 98)

The Installation of Smart Media Card (Option)

1. Insert the Smart Media Card upwardly(1) to the Phanta-Music Extended memory slot, slightly push it into the right position(2), (shown as figure).
2. When you want to take out the Smart Media Card, put the card left then pull it downward (2), the card will be easily come out (3), (shown as figure).



Remarks

When you purchase the Smart Media Card, please make sure that it is compatible to the Phanta-Music's specification, the specification will be as follow: **3V 32MB, 3V 64MB, 3V 128MB**

Installation Procedure for Windows 98

1. When hardware installation complete, Windows 98 will auto detect your Phanta-Music, then following dialog box will appear, click " Next ".



2. Select "Search for the best driver for your device (Recommended)" option, then click " Next ".



3. Please insert "Phanta-Music" driver into Disk, select Disk driver or specify a location, click " Next " .



4. The following message will appear, click "Next".



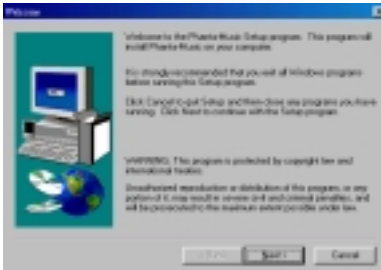
5. Windows has finished installing all the Phanta-Music drivers, click " Finish " to complete the installation.



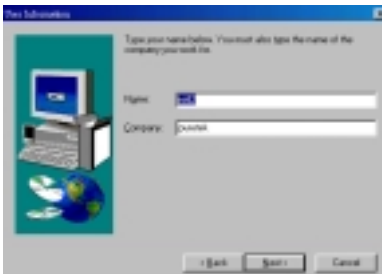
Phanta-Music Package

Phanta-Music application program

1. First of all, insert the floppy disk into the floppy drive, then click setup, a figure will show up just as following figure, press "Next".



2. Type your name and company title if necessary, then press "Next".







3. Press "Next".
4. Press "Next".
5. Press "Next".
6. Click " Finish " to complete the setup.

When you download the legal MP3 files to your PC, how to transfer those files to your Phanta-Music?

- First, select the Phanta-Music from the Program Files item, the following figure will appear (shown as figure).



Figure Description

- | | |
|---|--------------------------------------|
|  | Clear the currently MP3 files list . |
|  | Open the MP3 files. |
|  | Select all of the MP3 file. |
|  | Delete your MP3 files. |




Delete the MP3 files which was stored in Phanta-Music.



Transfer to Phanta-Music.



Read the MP3 files from your Phanta-Music, it can restore back to your PC.

- Open the application program and select the MP3 files which you wish to transfer to Phanta-Music, then press ().
- After the transferring is complete, press "OK". The Phanta-Music LCD status panel will show "On", it shows that the transferring is complete.

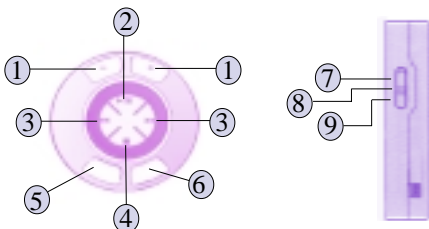
Remarks:

Suggest that before playing the MP3 songs, please remove the USB cable from Phanta-Music.

Phanta-Music Description

Before using Phanta-Music, make sure that the battery and earphone is fine in situation.

Phanta-Music function panel



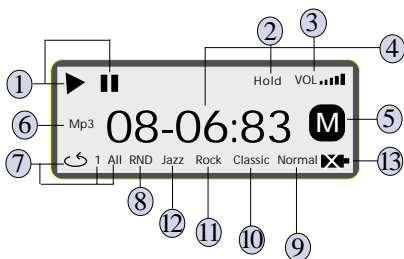
Phanta-Music Operation button

Description


1	Volume→ Press + or – to adjust the volume.
2	Play/Pause→ Press Play once (▶) to proceed the Music broadcast ; press Pause () to halt the player.
3	Skip → Press Skip (▶▶/◀◀) to skip forward or backward.
4	Stop → Stop playing the music file(when you press stop, after five seconds, it will enter to the suspend mode). When the playing finish, it will auto enter to suspend mode after five seconds.
5	Repeat/Random→ Repeat 1 indicates that a single song for repeating playing, Repeat All indicates that repeat all of the songs, Random indicates that playing with random track of songs.
6	EQ→ Four status for selecting, Jazz; Rock; Classic; Normal
7	Hold → Disable the Hold function.
8	Power on → Activate the Phanta-Music.
9	Power off → Switch off the power.

Phanta-Music LED Display

Despite of indicates its current mode of Play, Pause, Stop and Status. Phanta-Music LED Display also displays additional information, such as Volume Level, Battery Status and Smart Media Card Status.



1	Play/Pause→Playing mode or Pause mode.
2	Hold→Indicates that the hold switch has been turned on. Prevents all buttons from accidental operating from or unintended contact.
3	Vol→ Indicates Volume level .
4	Track number/time counter →Displays track number and time count of current track
5	M →Shows about the Smart Media Card message

6	MP3 → MP3 Play mode
7	Repeat 1/All → repeats either current or loops through all tracks
8	RND → Random play mode
9	Normal → Indicate Normal music
10	Classic → Indicate Classic music
11	Rock → Indicate Rock music
12	Jazz → Indicate Jazz music
13	 → Indicates battery Status.

Phanta-Music Precautions

Please be-aware of the following condition to remain the Phanta-Music life



Keep away the Phanta-Music from hard shock impact

Walking or Sporting will not bring bad effect on the sound quality, but shock impact onto Phanta-Music probably will damage it.



Keep away the Phanta-Music from wet
If any abnormal on playing, please contact to the dealer.



Proper storage place of Phanta-Music
Avoid from heat, humidity and magnetic field.