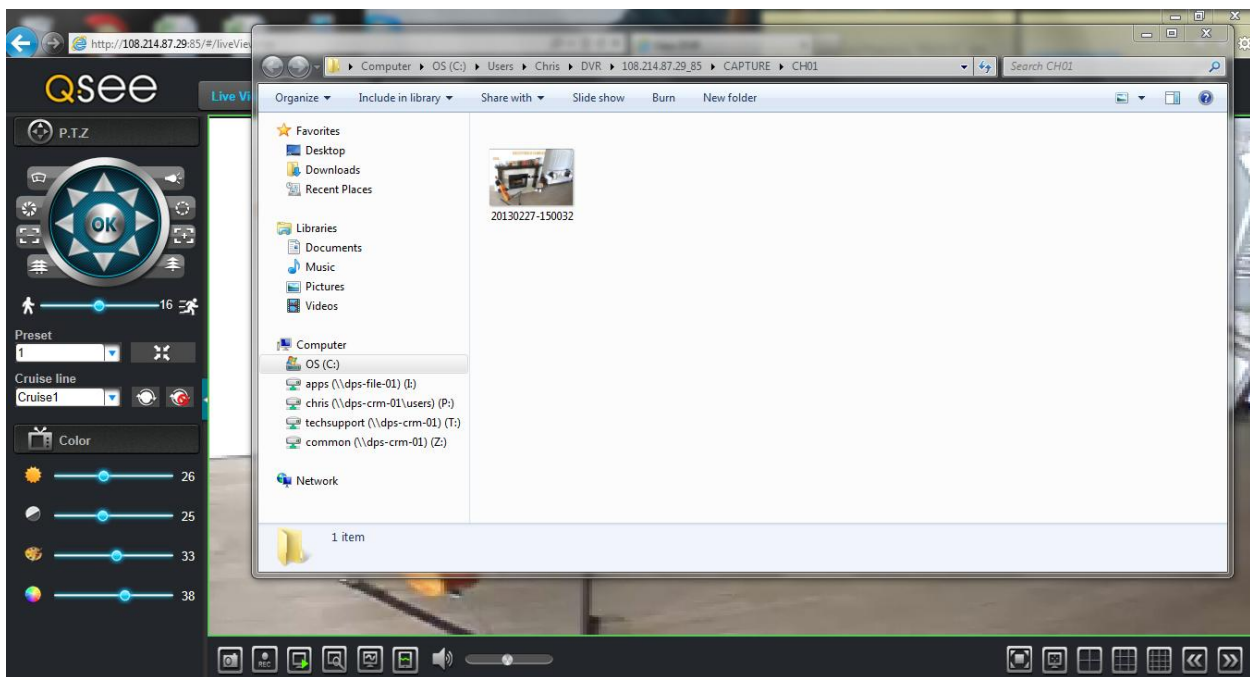




How to take a snapshot of the live feed using remote software for the QS458, QS494, QS524, QS558, QS4716, and QS4816 DVRs



As you can see in the image above the BLUE ICON in the BOTTOM LEFT CORNER of the DVR interface is shaped like a camera. The CAPTURE ICON is what you click on to save the image of your LIVE VIEWING SCREEN onto your remote or local PC. After the Snapshot is taken your PC will display the location where the snapshot is being stored on your PC's hard drive.



Above picture shows the name of the file and that it is being saved on the C drive.