

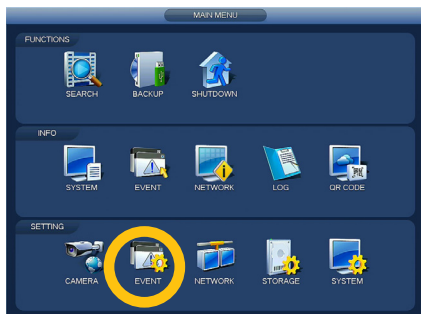
Motion Detection Sensitivity

QC
SERIES

Your DVR is set to record video whenever motion is detected. You can limit motion detection to only certain areas with different levels of sensitivity.

STEP 1

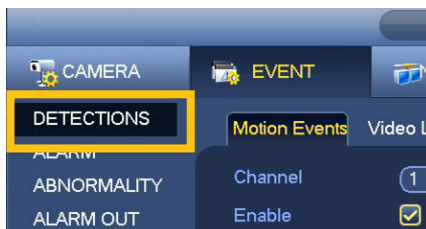
In the Main Menu, click on **Event**. (picture 1)



PICTURE 1

STEP 2

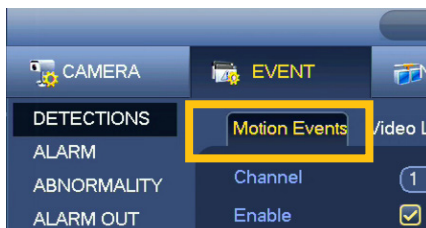
Make sure that **Detections** is selected in list on the left. (picture 2)



PICTURE 2

STEP 3

Make sure that the **Motion Events** tab is selected. (picture 3)



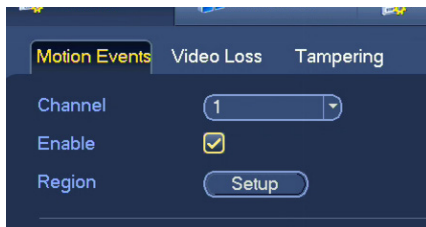
PICTURE 3

STEP 4

Select the **Channel** you want to configure using the pulldown. (picture 4)

STEP 5

Click the **Setup** button next to **Region**. (picture 4)



PICTURE 4

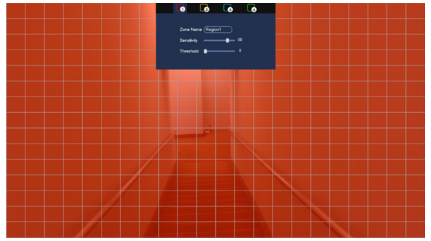


NOTE: Motion detection will only occur if the **Enable** box is checked for that camera.

STEP 6

You will see the view from the selected camera with a red overlay. *(picture 5)*

- Only the areas covered by an overlay will be motion sensitive.
- The overlay will not appear on your video.



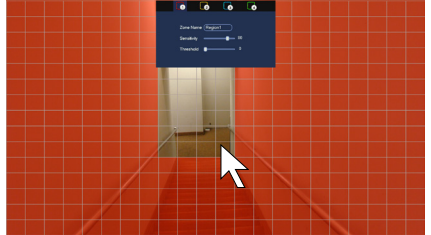
PICTURE 5

STEP 7

Click and drag with the mouse to remove the overlay from areas you do not want to detect motion.

(picture 6)

- Click and drag to restore the overlay to selected areas.



PICTURE 6

STEP 8

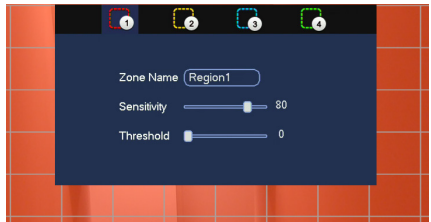
Adjust the sensitivity of the area using the sliders.

(picture 7)

Sensitivity: How much motion must occur to trigger an event.

Threshold: Over how big an area must motion take place in order to trigger an event.

- The control area will disappear to allow you to configure the entire area. It will reappear if the cursor is moved to the top center of the screen.

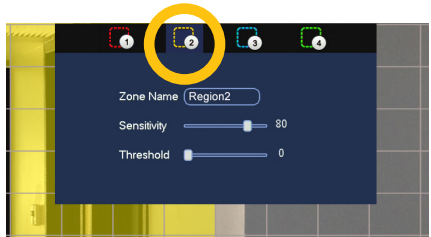


PICTURE 7

STEP 9

Create areas with different motion sensitivity, if desired, by clicking on another zone. *(picture 8)*

- Zones with higher numbers will override the settings of lower-numbered zones in areas where they overlap.



PICTURE 8

STEP 10

Once you have completed setting up your zones, right-click to exit.

STEP 11

Click **Apply**. *(picture 9)*



PICTURE 9

STEP 12

Click **OK** to save your settings and exit the window.
(picture 10)



PICTURE 10