



QR414

User's Manual



Contact Us:

Digital Peripheral Solutions, Inc.
8015 E. Crystal Drive
Anaheim, CA 92807

Website:

<http://www.Q-See.com>

Customer Service:

Phone: 877-998-3440 x 538
Email:cs@dpsi-usa.com

Tech Support:

Phone: 877-998-3440 x 539
Email:ts@dpsi-usa.com

Fax:

714-998-3509

Revised 3/1/2010

CONTENTS

Chapter 1: DVR Features	2
Chapter 2: Layout	3
2.1: Front Panel.....	3
2.2: Rear Panel	4
2.2.2: Remote Control	5
2.2.3 Mouse Operation	5
Chapter 3: DVR Installation	6
3.1: Hard Drive Installation	6
3.2: Connecting Your DVR to Cameras and a Monitor	6
3.3: Connecting the Power Supply.....	6
Chapter 4: DVR Boot up	7
4.1: System Initialization	7
4.2: Main Interface.....	7
4.3: Pop-Up Menu	7
Chapter 5: DVR Menu	8
5.1: Main Menu At-a-Glance	8
5.2: Main Menu.....	9
5.2.1: Camera Setup	9
5.2.2: Record Setup.....	10
5.2.3: Network Setup	11
5.2.3.1: DHCP.....	11
5.2.3.2: PPPoE	11
5.2.3.3: STATIC.....	12
5.2.3.4: Port Forwarding	13
5.2.3.5: Pop-Ups & ActiveX Controls.....	14
5.2.4: Recording Search.....	15
5.2.5: Backup Recorded Files	16

5.2.6: Multi Player	17
5.2.7: Device Management.....	19
5.2.7.1: HDD Management.....	19
5.2.7.2: Alarm Set	20
5.2.7.3: PTZ Setup.....	21
5.2.7.4: Mobile Setup.....	22
5.2.7.5: Mobile Phone Access	22
5.2.7.6: Motion Detect.....	27
5.2.8: System Function	27
5.2.8.1: Time Set.....	27
5.2.8.2: Password	28
5.2.8.3: Video Setup	28
5.2.8.4: Language.....	28
5.2.8.5: Info.....	28
5.2.8.6: System Maintenance	28
5.3: Menu Lock.....	29
5.4: Video Search.....	29
5.5: PTZ Control	29
5.6: Record.....	30
5.7: Stop Recording.....	30
Chapter 6: Net-Viewer Program	31
6.1: Enable Plug-Ins and Log-In to Net-Viewer.....	31
6.2: Main Interface of Net-Viewer.....	31
6.2.1: Menu.....	32
6.2.1.1: Live	32
6.2.1.2: Replay.....	32
6.2.1.3: Setup	32
6.2.1.4: Logging Out of Net-Viewer	34
6.2.2: PTZ and Live Play Controls.....	34
Chapter 7: Specifications	35
Chapter 8: Appendix	36

8.1: Operation Function Table 36

8.2: Setting up Alarm Record Mode 37

8.3: Troubleshooting..... 38

8.4: System Connections 39

8.5: Accessories Included 40

Q-See Product Warranty..... 41

Customer Information Card 42

Safety Instructions

1. Use proper power source.

Do not use this product with a power source that applies more than specified voltage (100-240V AC).

2. Never insert anything metallic into the DVR case.

Putting something into the DVR case can be a source of dangerous electric shock.

3. Do not operate in wet & dusty area or use near water.

Avoid places like a damp basement or dusty hallway.

4. Do not expose this product to rain or use near water.

If this product accidentally gets wet, unplug it and contact an authorized dealer immediately.

5. Keep product surfaces clean and dry.

To clean the outside case of the DVR, use a cloth lightly dampened with water (no solvents).

6. Provide proper ventilation.

This DVR has a built in fan that properly ventilates the system.

7. If there are any unusual sounds or smells coming from the DVR, unplug it immediately and contact Q-See.

Warning: You may be subjected to severe electrical shock if you remove the cover of the DVR.

8. Handle DVR box carefully.

If you accidentally drop your DVR on any hard surface, it may cause a malfunction. If the DVR doesn't work properly due to physical damage, contact an authorized dealer for repair or exchange.

9. Use standard lithium cell battery (preinstalled).

The standard lithium cell 3v battery located on the mother board should be replaced if the time clock resets during a power outage. Warning! Unplug the DVR before replacing battery or you may be subjected to severe electrical shock. Properly dispose of old batteries.

10. Make sure there is good air circulation around the unit.

This DVR system uses a hard drive for video storage which generates heat during operation. Do not block air holes (bottom, upper, sides and back) of the DVR as they are designed to cool down the system while running. Install or place this product in an area where there is good air circulation.

Chapter 1: DVR Features

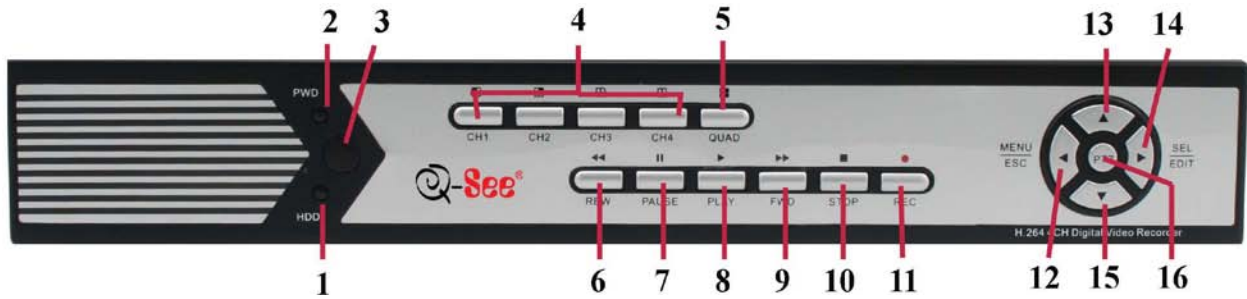
Function	Brief Description
Real-Time Monitoring	Supports Real-Time Surveillance via Monitor
Save Files	DVR Saves Real-Time Recording of Image Files to HDD
Backup Files	Supports DVR Backup of Recorded Image Files via USB Flash Drive and Hard Drive
Playback Files	Supports DVR single CH and Multiple CH Playback of Recorded Files
Network Operation	Supports Remote Surveillance by Multiple Users Simultaneously
Alarm Setting	Supports HDD & video input alarm management and external alarm signal inputs.
Mouse Operation	Supports Mouse Operation for Faster Menu Navigation.
PTZ Control	Supports PTZ camera operations through RS-485.

Other Features:

- H.264 Video Compression Format; Supports CIF, D1 and HD1 Resolution
- ADPCM Audio Compression Format
- Windows Graphics Interface
- BNC Video Out Ports
- Supports Remote Live Viewing Via 3G Mobile Networks
- Supports Sending Email Alerts When Motion is Detected by System
- Triplex Recording Technology allows for Simultaneous Recording, Playback and Internet Transmission
- Supports USB Mouse and Remote Control Operation
- Rear USB 2.0 Ports For Back-Up, Upgrade and Mouse Operation
- Supports Double Encoded Bit Network Transmission
- Adjustable Video Package Time
- Multiple Alarm Record Mode
- Multiple Language OSD (On Screen Display)
- Supports Auto Maintenance

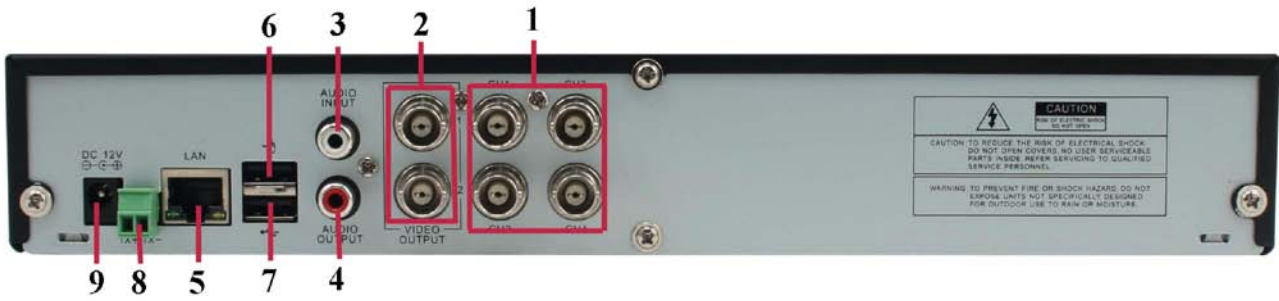
Chapter 2: Layout


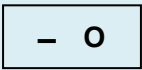
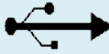
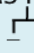
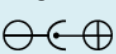
2.1: Front Panel



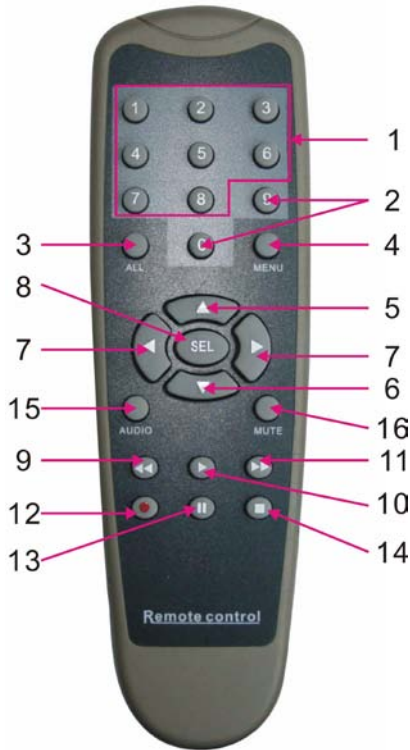
Item Number	Button Name	Symbol	Function
1	HDD		When the "Red" Indicator Light Flashes, it Means the Hard Drive is Being Read or Written to
2	POWER INDICATOR		If the "Green" Indicator Light is on, the System is Getting Power
3	IR Receiver		Receives Signal from Remote Control
4	CH1 CH2		Select Single Channel Display
	CH3 CH4		
5	QUAD		Display all Cameras in Live Display or Playback Mode
6	REW		Move Left/Reverse
7	PAUSE		Pause/Play Frame by Frame, Dwell Time (Sequential Channel Switch) During Single Camera Display
8	PLAY		Play Recorded Video
9	FWD		Move Right/Play Forward
10	STOP		Stop Playback/Stop Manual Recording
11	REC		Start Manual Recording
12	MENU/ESC		Enter Main Menu or Exit Menu
13	UP		Move Up
14	SEL/EDIT		Select Key/Edit
15	DOWN		Move Down
16	PTZ		Enter PTZ Control Mode

2.2: Rear Panel



Item Number	Name/Symbol	Description	Function
1	CH1-CH4	VIDEO INPUT	Ch1-4 (BNC Interface) Connection
2	VIDEO OUTPUT	VIDEO OUTPUT	Connect Monitor Output (BNC Interface)
3	AUDIO INPUT	Audio Input	Audio Signal Input (RCA Interface) Connection
4	AUDIO OUTPUT	Audio Output	Audio Signal Output (RCA Interface) Connection
5	LAN	Ethernet Port	Intranet and Internet Connection (RJ-45 Interface)
6		USB Port	USB Mouse Connection
7		Power Switch	Turn Power On and Off
8		USB 2.0 Port	USB Device (Flash Drive, Hard Drive) Connection
9	RS485 	RS485 Alarm Port	RS485 Interface
10	DC12V 	Power Port	Power Supply - DC12V 3A

2.2.2: Remote Control



1	1-8	Channel Select 1-8 ; Numeric key
2	9,0	Numeric Key
3	ALL	Preview all Channels
4	MENU	Enter/Exit Main Menu
5	▲	Up Key
6	▼	Down Key
7	◀ / ▶	Left / Right Key
8	SEL	Select Key/ Edit Key
9	◀◀	Rewind
10	▶▶	Play Recorded Events
11	▶▶	Forward Key
12	●	Manual Recording
13		Pause / Frame Play
14	■	Manually Stop Recording or Playback
15	AUDIO	Play Audio from Selected Camera
16	MUTE	Mute Audio

2.2.3 Mouse Operation

For your convenience, your Q-See DVR System can also be operated by a mouse in addition to the front panel controls and remote control.

Action	Function
Left Click	<p>When your DVR is in Menu Lock mode, you can left click the mouse to generate a pop-up menu then click on any sub menu to generate a pop-up log in window.</p> <p>With your DVR in Menu unlock mode, left clicking on your mouse opens a pop-up dialog menu that allows you to access your programming and configuration settings. Some of the options available by left clicking include :</p> <ul style="list-style-type: none"> • Edit your record settings. • Playback recorded files. • Access a pull-down menu. • Control color and volume settings. • Choose your system's language settings. • Double clicking the left key of your mouse maximizes the screen view.
Right Click	<p>With your DVR in Live Display mode, right clicking displays a pop-up menu which allows you to:</p> <ul style="list-style-type: none"> • Exit system programming and configuration mode. • Close all configuration menu dialog boxes.
Sliding Mouse	<ul style="list-style-type: none"> • In Motion set mode, sliding the mouse will select the area of motion you wish to choose. • In Color Set mode, sliding the mouse allows you to access and adjust the color control bar and the volume control bar.

Chapter 3: DVR Installation

3.1: Hard Drive Installation

Caution : NEVER Install or remove the hard drive while the DVR is running!

The model has a Hard Disk Drive (HDD) drawer. Please use key provided to open the drawer and insert the HDD as follows:

- (1) Remove screws and open DVR upper cover carefully;
- (2) Insert Power Cord and data cable securely into matching ports on hard drive;
- (3) Put the upper cover back carefully, re-attach screws.

3.2: Connecting Your DVR to Cameras and a Monitor

Connect camera cable to the Video Input port of the DVR. Connect the monitor to the Video Output port of the DVR using a BNC connector (See Rear Panel Section 2.2).

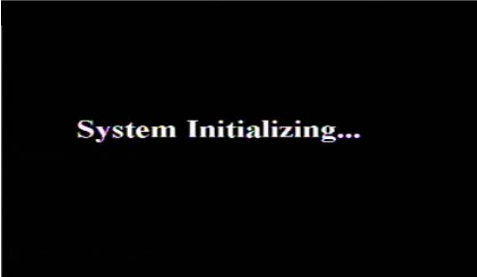
To connect a PTZ speed dome to your DVR System, connect your PTZ Camera data cables to your RS485 A & B ports. See Chapter 5 for a more detailed account of PTZ Camera configuration instructions.

3.3: Connecting the Power Supply

Only use the power adapter supplied with your DVR System. Failure to do so may result in unforeseen system failures.

Chapter 4: DVR Boot up

4.1: System Initialization



(Picture 1)

After connecting the power adapter and turning on the power button, the system will boot-up and you will see a “System Initializing” message (See Picture 1).

4.2: Main Interface



(Picture 2)

Once the system initialization process is complete, the system will enter the main interface (See Picture 2). If the system does not detect video input, you will receive a “Video Loss” message for each camera as depicted in Picture 2. Once the cameras have been connected, the Main Interface will display a live feed from each camera in its own box (See Picture 2). You can use the mouse to double-click on any of the live images in the Main Interface panel to obtain a full screen view of the camera you choose to zoom in on. Double-clicking a second time will zoom out of the single camera view and switch you back to multi-camera view (See Picture 2). Right-clicking your mouse will display a pop-up menu which allows you to access various menu items. Clicking on any area outside the pop-up menu will enable you to exit.

Note: When the DVR does not detect a HDD, the first box in the Main Interface will display a character “H” and you will hear an accompanying alarm buzzer. To turn the alarm off, go to [Device manage→Alarm setting]. Choose the “off” option next to “HDD loss, HDD space not enough and alarm output”.

4.3: Pop-Up Menu

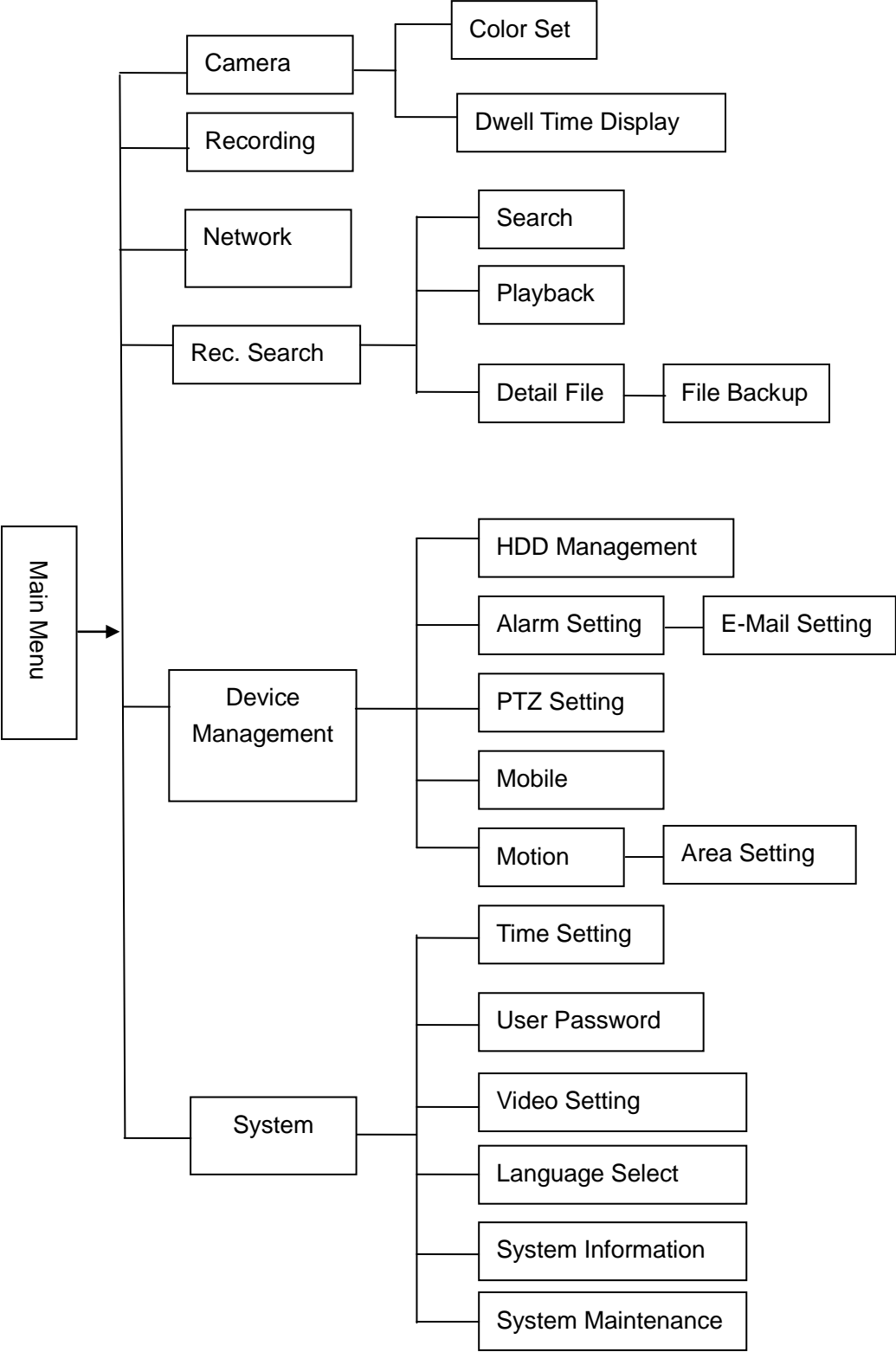


(Picture 3)

Once the System Initialization process is through, right-click your mouse in the Main Interface mode and you will receive a pop-up menu. From here, you can access the Main Menu, PTZ, Video Search, Mute, Start and Stop Record, Start Rolling and Start Cruise options.

Chapter 5: DVR Menu

5.1: Main Menu At-a-Glance



5.2: Main Menu



(Picture 4)

The right-click menu in the Main Interface mode (Picture 3) allows you to access the Main Menu interface (Picture 4). You can use the right click function of the mouse or the Menu button on the front panel of the DVR to enter into the Main Menu interface. Use the mouse or the FWD and REW button on your DVR's front panel or remote control to navigate around the Main Menu Interface and select the icon of the program you wish to access (See Picture 4). Use the ESC button on your DVR's front panel to return to the previous window of the Main Menu interface. Set your management permissions, configure your devices, customize your recording parameters, and access your System Functions (such as time, date and passwords) through the Main Menu Interface. You can also configure the controls for your Camera, Network, HDD, Alarm, PTZ, & Mobile Phone controls through the Main Menu Interface.

5.2.1: Camera Setup



(Picture 5)

To set up the display name and position display of each camera, go to [Main Menu → Camera] and you will receive a Camera Setup interface (Shown as Picture 5). Through the Camera Setup interface, you are able to choose a name for each of your connected cameras up to 8 characters long. The Camera Setup interface (Picture 5) also gives you the ability to choose which camera channels you wish to enable live viewing of and which camera channels you wish to set up with the ability to record. The Camera Setup interface is also where you would set your DVR system up to automatically rotate through your camera views and adjust the image brightness, saturation, contrast and hue settings of each camera as well.



(Picture 5A)

To set your system up to automatically rotate through your viewed cameras in the Camera Setup interface, click on the [AUTOSEQ] button (Picture 5). This will initiate a pop up AUTO ROTATION sub menu (Picture 5A) that will allow you to choose the amount of time you would like to view each camera from a drop-down list. Default rotation time is set at 5 Seconds. However, you can adjust this setting to range anywhere from 0 to 10 Seconds.

To adjust the image brightness, saturation, contrast and hue settings of each camera, click on the [SETUP] button under the column titled "COLOR" on the Camera Setup interface (Picture 5). This will initiate a pop-up [COLOR SETUP] sub menu where you can make your desired changes (Picture 5B).



(Picture 5B)

Please note that any modifications you make through the Camera Setup interface will not be applied until you click the [APPLY] button at the bottom of the dialog box (Picture 5). Once you do this, you will then be prompted to save your settings, and you must click [OK] in order for the changes to take effect. If you wish to abort the changes you made, simply click the [Exit] button on the bottom of your dialog box (Picture 5). By clicking on the [DEFAULT] button at the bottom of your Color Setup dialog box (Picture 5) all system default values will be reset to their original factory installed settings.

5.2.2: Record Setup



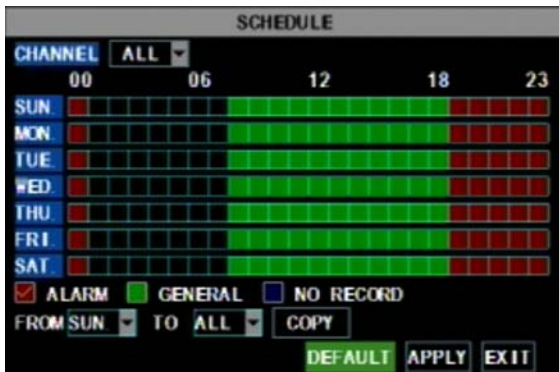
(Picture 6)

The right click menu in the Main Interface mode (Picture 3) allows you to access the Main Menu interface (Picture 4). To set up the recording parameters and settings of your DVR, go to [Main Menu] → [Record] to enter into the [Record Setup] menu (Picture 6).

The [Record Setup] menu (Picture 6) allows you to turn the recording status for each camera channel on and off, set the recorded image quality and enable audio recording. This menu also allows you to schedule your recording times and set your recording file sizes through the quality setting.

The [RECORD] button on your Record Setup Menu (Picture 6) allows you to turn each camera channel’s recording ability on or off. The [QUALITY] button gives you the option of choosing the quality of your recorded images from a drop down list for each individual camera channel. The [AUDIO] button allows you to turn the audio input on or off. When the audio is turned off, the DVR system will not record audio and you will not hear sound during playback of your recorded events.

The [REC MODE] drop down list allows you to setup the system to record 24 hours a day, on a set schedule or when motion is detected. The [FILE SIZE] drop-down list allows you to set the maximum recording time for all recorded files to be 15, 30, 45 or 60 minutes.



(Picture 6A)

TIME SCHEDULED RECORDING: To set your system up to record on a time schedule, choose the TIME SCHEDULE RECORD option on the REC MODE drop down list. To record 24 hours a day, choose the ALWAYS option from the REC MODE drop down list. To record on motion or a set schedule, select Time Schedule Record and click the “Schedule” option. Choosing this option will initiate a pop-up SCHEDULE interface which will allow you to customize your scheduling options as illustrated by Picture 6A. You can choose from a pull down menu at the top

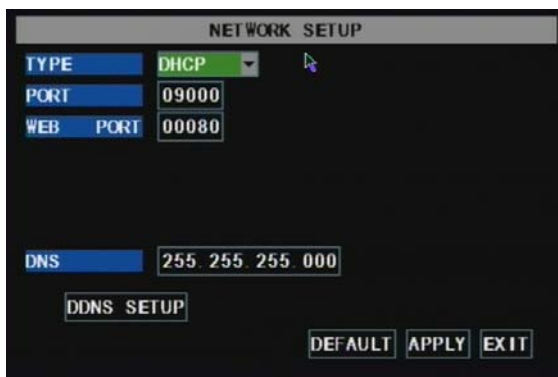
of your SCHEDULE interface to adjust the recording options for all channels or from the channels specified in the drop down menu if you prefer to set the recording parameters for each individual channel separately.

You are also given the option of setting up the date parameters of your scheduled recordings by choosing from the drop down menu on the bottom of your Schedule interface in the “From” and “To” options. Checking the ALARM (motion record), GENERAL (always record) and NO RECORD boxes will allow you to further customize options for your scheduled recordings.

If you decide that you do not wish to customize your system recording schedule, the Default recording schedule is as follows:

- Hr 01:00 am - 07:59 am: No recording (Not recording)
- Hr 08:00 am - 18:59 pm: Normal recording
- Hr 19:00 pm - 00:59 pm: Alarm recording (Record on activity or alarm only)

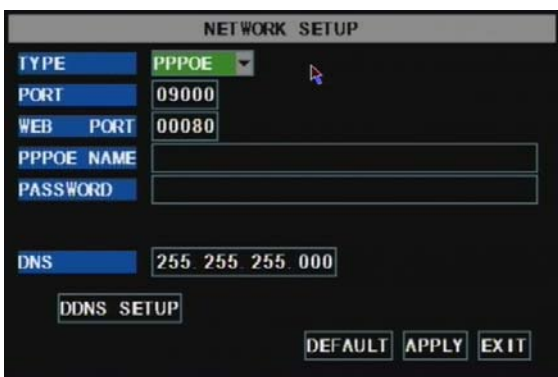
5.2.3: Network Setup



(Picture 7)

The right click menu in the Main Interface mode (Picture 3) allows you to access the Main Menu interface (Picture 4). To set up the Network settings of your DVR, go to [Main Menu] → [Network Set] to enter into [Network Setup] menu (Picture 7).

From the Network Setup menu (Picture 7), you can choose your Network Type (DHCP, PPPoE, or Static), Port and Web Port (80 and 9000 by default) from a drop down list. Once you have configured these, you can then view the DVR remotely over a network or the internet.



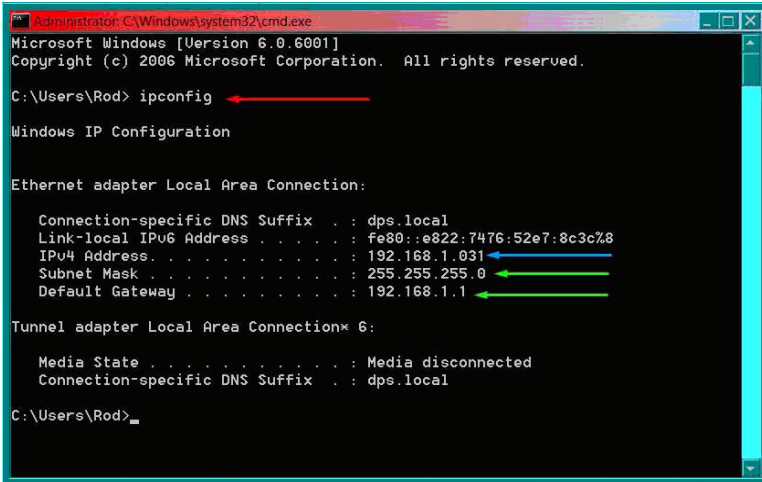
(Picture 8)

5.2.3.1: DHCP

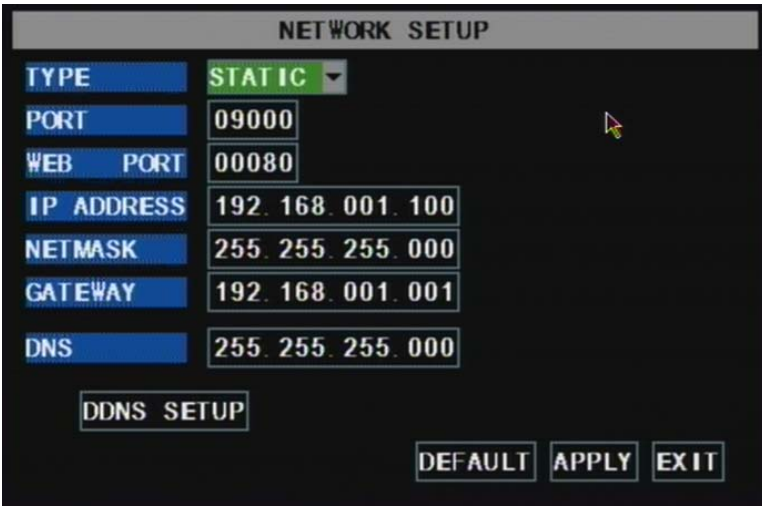
When selecting DHCP as your Network type, your Router will allocate a DVR IP address automatically once you exit the Network Setup menu. Write down the address assigned by your Router. It is recommended you switch to the “Static” Network Type and enter the address information here to avoid any discrepancies that might occur in the event your Router auto generates a different address in the future.

5.2.3.2: PPPoE

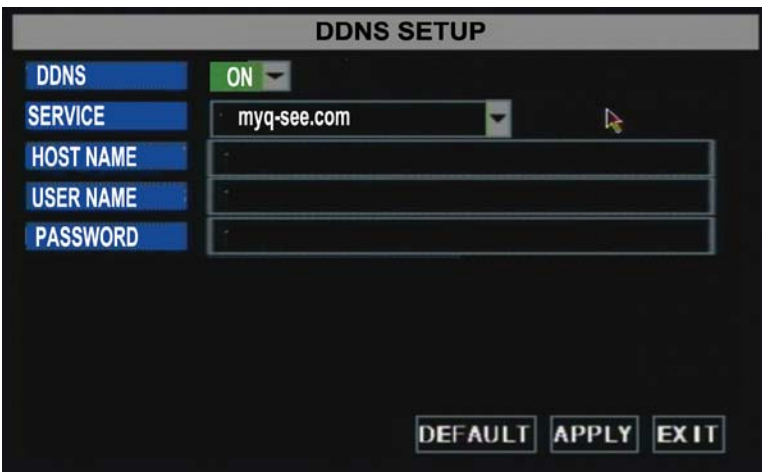
When selecting PPPoE as your Network type, you will need to input a user and password provided by your internet service provider. Once you have obtained those settings from your internet service provider, you will need to set your web port as illustrated in Picture 8.



(Picture 9)



(Picture 10)



(Picture 11)

5.2.3.3: STATIC

When selecting Static as your Network type, you will need to set the Network setting on the DVR to match settings of your Router. To do this, bring up the command prompt on any computer attached to your Router by typing cmd into your Run program (Picture 9). Type in ipconfig at the prompt (see red arrow on Picture 9) to access the router settings. Write down the gateway and subnet mask numbers (Green arrows on Picture 9) so you can enter them into the network settings of the DVR (Picture 10).

To set up the Network settings of your DVR, go to [Main Menu] → [Network Set] to enter into [Network Setup] menu (Picture 10). Select the Static option from the “TYPE” drop down list on the Network Setup menu (Picture 10). For the DVR’s IP address, use the same first 3 sets of numbers as the gateway and select a fourth set of numbers that is different than any other device attached to the same router. If the IP address of your computer in the ipconfig (BLUE arrow in Picture 9) was a single or two digit number you should be ok with any three digit number, if the computer IP address ends with a number in the 100s then you should use a number in the 200’s. Once you enter the addresses hit OK button.

At the bottom of the NETWORK SETUP window there is an option to setup the DVR to be accessed through a DDNS service. Clicking on this button will pull up a screen as seen in Picture 11. Through here, you can set your DVR up to use a Dynamic Domain Name Service. Keep in mind that a dynamic address can change from time to time depending upon your service provider. In the event that it does change, you will need to go to a website such as www.myipaddress.com from a computer attached to the same router as the DVR to figure out what that new IP address is.

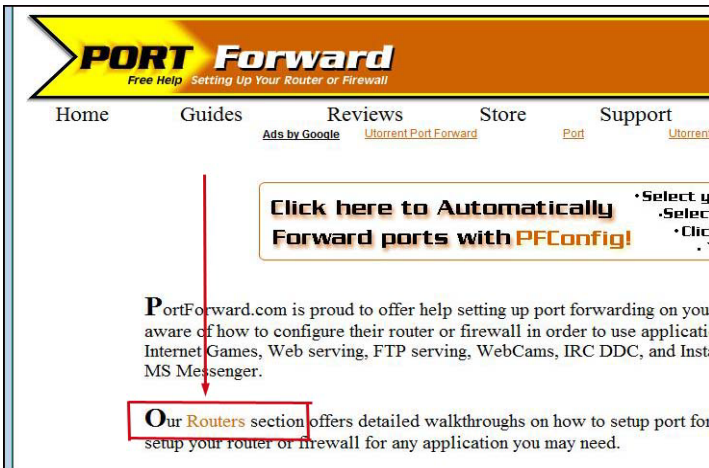
To avoid a change in IP Address by your Internet Service Provider, you can either ask your service provider for a static IP Address or use a dynamic domain name service to get a domain name that can be linked to your dynamic address. You can register for a domain name, user name, and password through our company’s myq-see.com website. By registering, you can then enter your dynamic domain name into an Internet Explorer browser instead of

an IP address and be directed to whatever the current dynamic IP address is, so that you can always access the DVR by entering the same address. This DVR also supports the DDNS service provided by dyndns. You can get more information on how to use these services from the myq-see.com or www.dyndns.com website.

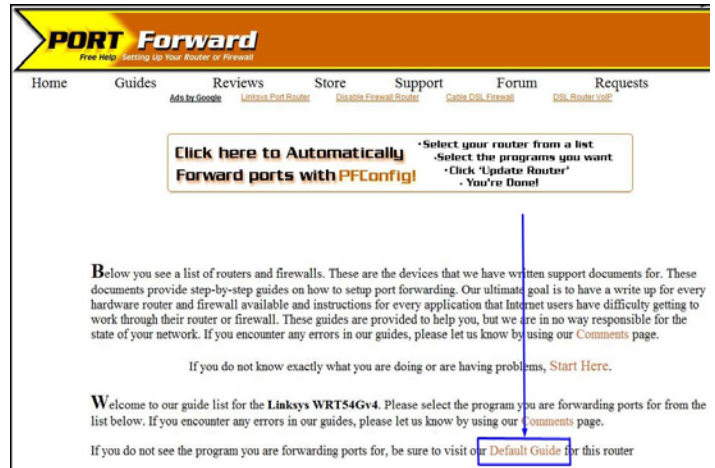
5.2.3.4: Port Forwarding

To access the DVR from a remote computer over the internet you will need to forward port 80 and port 9000 of the Router the DVR is attached to, to the IP address of the DVR. You can get instructions on how to do this for most popular routers by going to www.portforward.com. Once there, click on the orange "Routers" hyperlink in the second paragraph as shown in Picture 12. Find the link to the brand and model of your router from the list of manufacturers and click the "next button". From there, click on the orange "Default Guide" link (BLUE box in Picture 13). This will take you to the port forwarding instructions for your router.

When you access the DVR from a remote computer you also need to use a different address in the Internet Explorer browser window. Instead of entering the IP address of the DVR you need to enter the public IP address of the router the DVR is attached to. You can get this address by going to www.myipaddress.com from a computer that is attached to the same router as the DVR. This website will display your address as illustrated in Picture 14. The example below shows an IP Address of 76.254.183.54. Please make sure to take note of the address that you obtain for your own Router and use it accordingly.



(Picture 12)



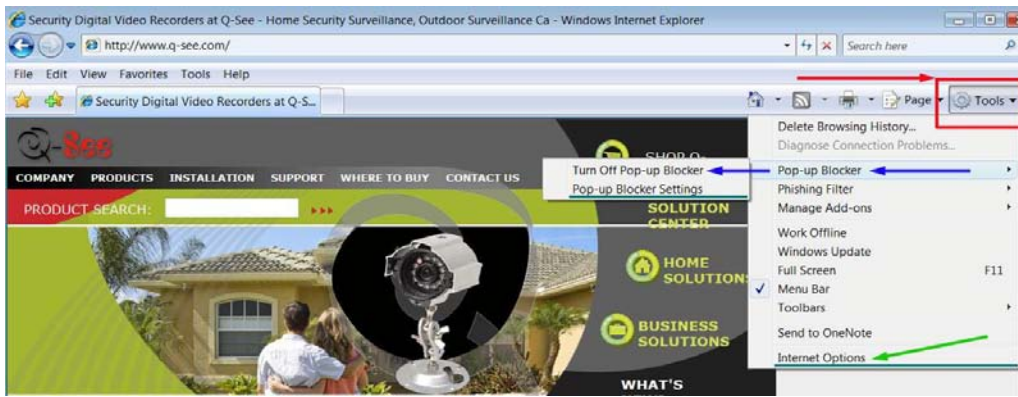
(Picture 13)



(Picture 14)

5.2.3.5: Pop-Ups & ActiveX Controls

To access the DVR through Internet Explorer after you have configured your network settings on your DVR to match the settings of your Router and forwarded your ports as discussed above, you will need to modify your browser controls to allow Pop-ups. To do this, go to the Internet Explorer tool bar and select the "tools" option (RED box in Picture 15), then select the "Pop up Blocker" option and select "Turn Off Pop-up Blocker" (BLUE arrows in Picture 15). You will also need to enable Active X controls. To do this, go to the Internet Explorer tool bar and select the "tools" option, then "Internet Options"(GREEN arrow in Picture 15). This will open an Internet Options dialog box as shown in Picture 16. Through here, choose the "Security" tab (RED box in Picture 16), then click the "Custom Level" button (GREEN box in Picture 16), then click on OK (BLUE arrow in Picture 16). This will open a dialog box as shown in Picture 17. Once here, scroll down to the ActiveX Controls and Plug Ins and make sure they are all set to either prompt (BLUE arrows Picture 17) or enabled (RED arrows Picture 17).

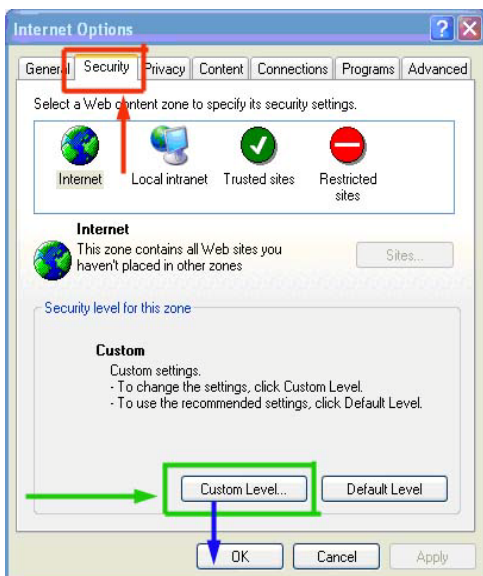


(Picture 15)

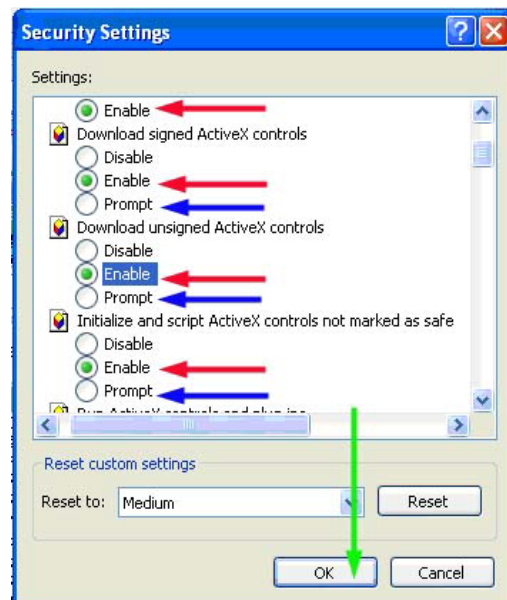
To connect to the DVR from the remote computer you would then open an Internet Explorer browser window and enter the internet IP of your router that you got by going to www.myipaddress.com.

NOTE: If you cannot use HTTP port 80 or 9000 because it is being used by another program, or it is being blocked by your service provider, you can use another port in the same range. If you do so then you need to forward the IP address of the router to the other port, change the port in the DVR NETWORK settings and you need to add the port number after the IP address. For example, if you set the HTTP port as 82, you need to enter the IP address as 192.168.0.25:82.

User name and password here are the same as what you use on the DVR.

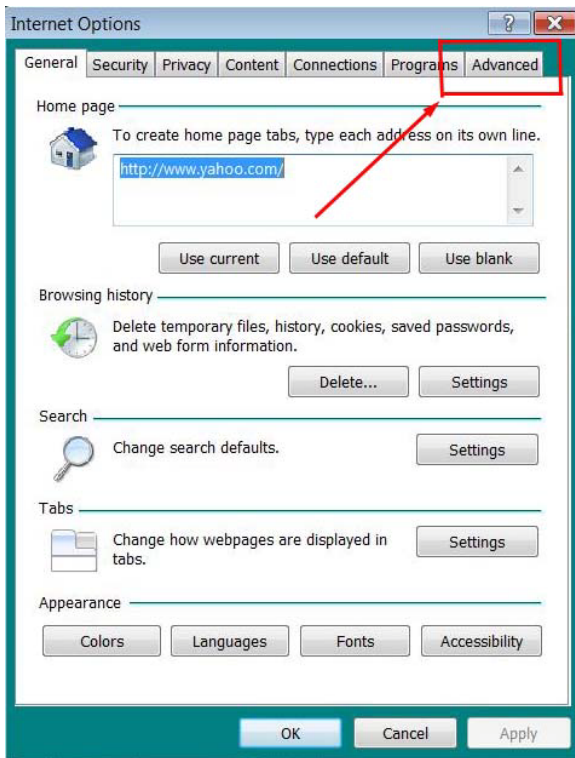


(Picture 16)

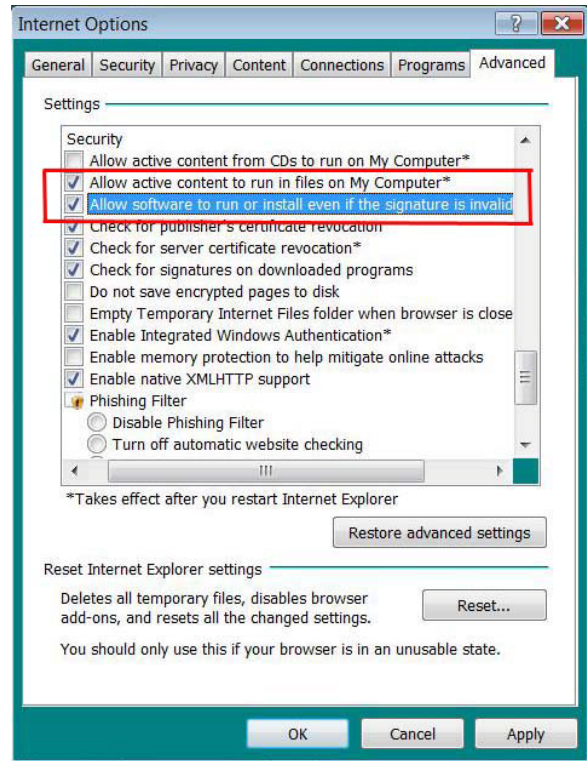


(Picture 17)

If you get a error message that says the program cannot load because the publisher is unknown or the program is unsigned, go to internet explorer→Tools→Internet Options, then go to the “Advanced” tab (RED box in Picture 18). This will open the window in Picture 19. Scroll down to “Security”, and select the options to “Allow software to run or install even if the signature is invalid”, and “Allow Active Content to Run Files on My Computer” (RED box in Picture 19).



(Picture 18)



(Picture 19)

5.2.4: Recording Search



(Picture 20)

Click [Main menu→ search] to enter into [Video Search] menu (Picture 20). If you input a specific date and click [Search], you will find all the recordings for that day. When you click on the [Date] from the VIDEO FILE list, you can playback the file associated with that date in 4 channel view mode. Clicking on the [FILE LIST] button at the bottom of the VIDEO SEARCH interface screen will generate a FILE LIST submenu (Picture 21) where you can further customize the viewing and backup settings of the recorded files on your hard drive.

You can search though recorded video files at a Forward frame rate of 2x, 4x, and 8x. You can also search through recorded video at a Slow play rate of 1/2x, 1/4x, and 1/8x. You also have the option of searching through recorded video at a normal speed and pause and play frame by frame using the Playback control bar on your DVR system. When you have reached the end of your recorded files in search mode, your system will return to the previous menu.

File List

On the [Video search] menu mode, click [File list] and you will get a pop-up menu as shown in Picture 21. From here, you are able to search through the files associated with all the recorded material each channel has recorded. This feature allows you to view all of the available files by channel and type (all, normal, or alarm) and you can select each of these individual files by clicking on the box next to the name of the file. You can also use your system's DOWN and FWD buttons to search through the list of recorded files. The files you select can then be backed-up by clicking on the BACKUP button on your File List (Picture 21). It is possible to backup multiple files should you need to backup more than one file at a time. As illustrated in Picture 21, the buttons on the FILE LIST interface are:

FIRST: Indicates the first page of recording history you have searched. When you view other pages, clicking [First] button brings you back to Page one.

PREV: Takes you back to page before the one you are currently viewing (except the first page).

NEXT: Takes you to the page after the one you are currently viewing (except the last page).

LAST: When you view other pages, clicking [Last page] button takes you to the Last page you viewed.

ALL (Select All): Select all the events on current page.

REVERSE: Select the opposite events than your current selection.



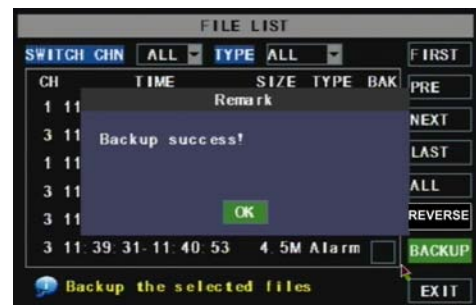
(Picture 21)

5.2.5: Backup Recorded Files

If you want to backup a single recorded file from the file list, from the File List dialog box in Picture 21, select file you wish to back up by placing a check mark in the accompanying green box and hit the [BACKUP] button on the right of the screen. You will then receive a pop up screen as illustrated in Picture 22 showing you the progression of your backup. Once backup is complete, you will then receive a pop up message informing you that you have backed up your files successfully (Picture 23). Note that all files will be in an H264 format that can be converted to AVI using the Multi Player program that comes with the DVR or through the net-viewer program. Once converted, you can then view these files through any program that supports an AVI format.



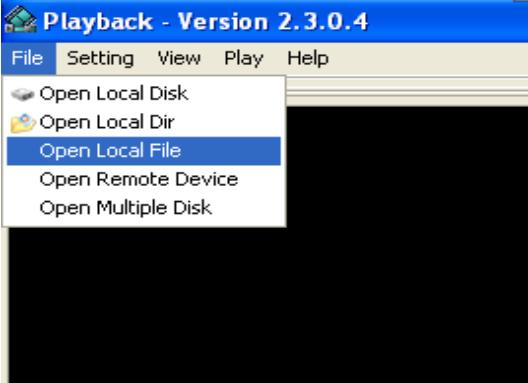
(Picture 22)



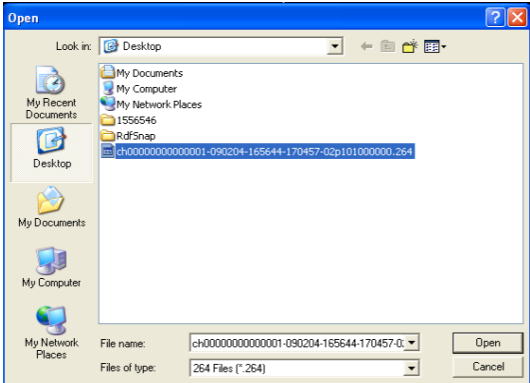
(Picture 23)

5.2.6: Multi Player

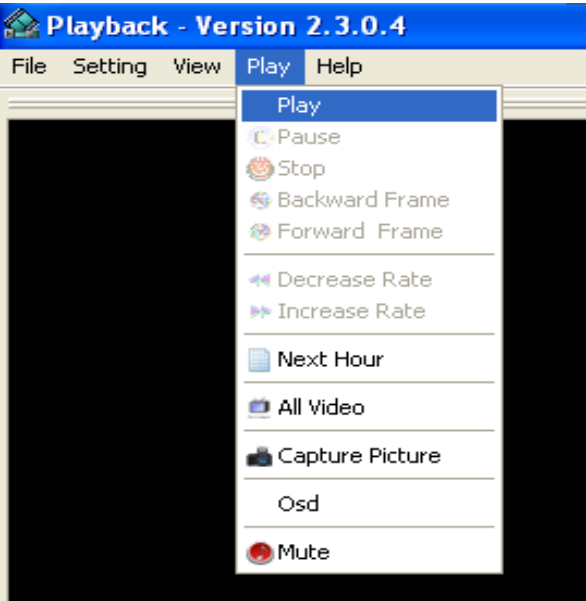
To open a file backed up to a USB drive, open the Multimedia Player program on your computer and click [File→ Local File] to find/select the backup file, and then click [open] button (Picture 24). This will generate a dialog box of all the files on your device or computer (should be .264 extension as illustrated in Picture 25).



(Picture 24)



(Picture 25)

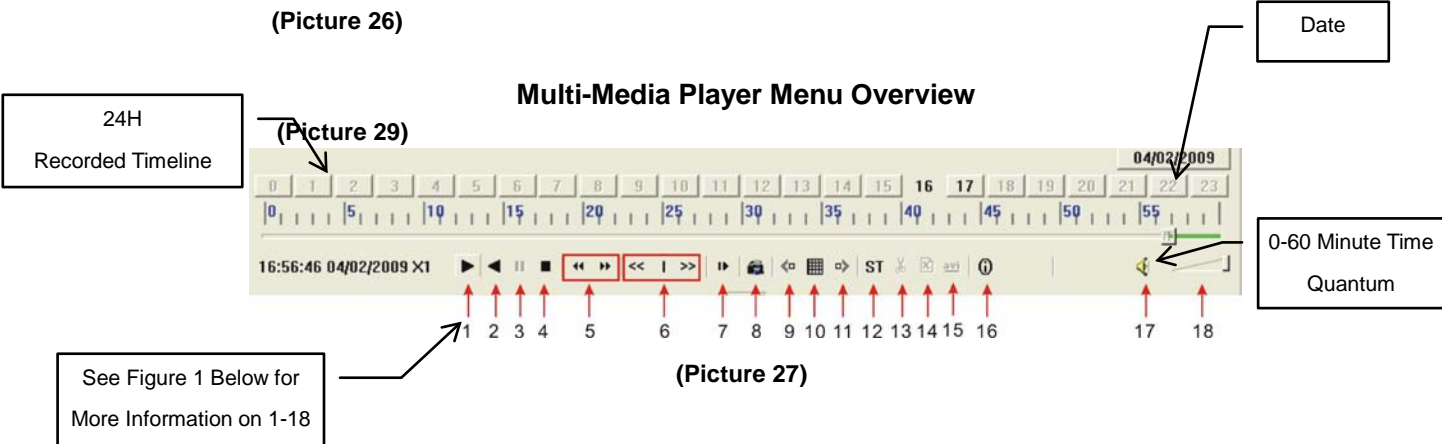


(Picture 26)

To play the file, click the Play menu on the toolbar of the multimedia player interface as shown in Picture 26. Doing this will generate a pop up window as illustrated in Picture 27.

Click the [Play-] button on the bottom of the multimedia player and the [Play-] button to start playing the file.

Multi-Media Player Menu Overview



The diagram shows a playback interface with a timeline at the top labeled '24H Recorded Timeline' and 'Date' (04/02/2009). Below the timeline is a control bar with various buttons. Callouts indicate a '0-60 Minute Time Quantum' for the timeline and a reference to 'See Figure 1 Below for More Information on 1-18' for the control buttons.

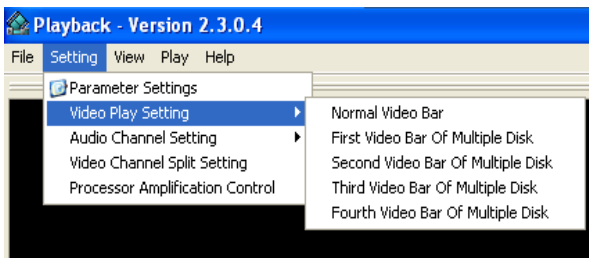
(Picture 27)

- Date is depicted in upper right hand corner as illustrated in Picture 27. Date represents the date current file selection was recorded.
- The 24H recorded time line under the Date represents the time line base for recorded material.
- The 0~60 Minute recording time quantum represents the minute base for all recorded materials. As depicted in Picture 30, the green bar represents the time length of the recorded material in the file you are currently playing.

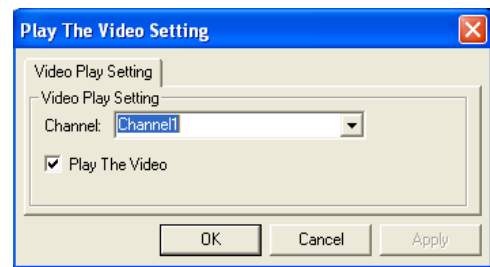
**Recorded File Menu Commands
(Figure 1)**

1	Play	10	All the windows
2	Previous recording file	11	Add window
3	Pause	12	Start
4	Stop	13	Cut
5	Previous frame / Next frame	14	Delete
6	Slow play, Normal play, Fast Play	15	Convert AVI
7	Next Hour	16	On Screen Display
8	Capture picture	17	Mute switch
9	Reduce window	18	Volume adjust

Video Play Settings: In your Multimedia player interface, got to the Setting menu on your toolbar. From there, go to Video Play Setting→Normal Video Bar (Picture 28). This will open up a dialog as illustrated in Picture 29 allowing you to choose from a drop down list of which channels to play. Make your choice from the options provided in the drop down list and click next to “Play the Video”. Click Apply then OK.

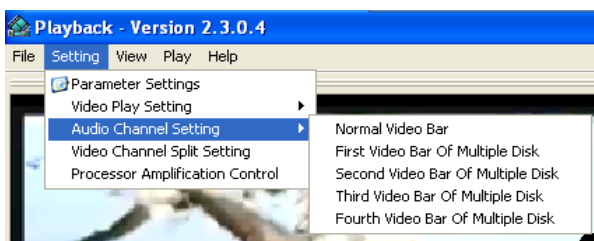


(Picture 28)

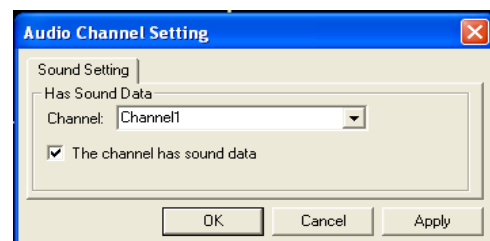


(Picture 29)

Audio Settings: In your Multimedia player interface, go to the Setting menu on your toolbar. From there, go to Setting→Audio Channel Setting→Normal Video Bar (Picture 30). This will open up a dialog as illustrated in Picture 31 allowing you to choose from a drop down list of which audio channels to play. Make your choice from the options provided in the drop down list and click next to “The channel has sound data”. Click Apply then OK. Please note that these setting changes will not take effect until you re-start your multimedia player.



(Picture 30)



(Picture 31)

5.2.7: Device Management



(Picture 32)

Device management allows you to configure the controls for the Hard Disk Drive, External Alarm, PTZ Cameras, Mobile Phone Monitoring, and Motion Detection. The Device Management interface (Picture 32) can be accessed through the Main Menu interface illustrated in Picture 4 by clicking on the [Device] button. You can then click on the button of the device you wish to configure as illustrated in Picture 32 and customize them according to your desired specifications.

5.2.7.1: HDD Management



(Picture 33)

Once you install a new HDD in your system, you will want to click on the HDD icon in the Device Management interface (Picture 32) to configure its settings. Doing this will generate a pop up HDD management interface as illustrated in Picture 33. When you install a HDD, the system will automatically detect if it needs to be formatted. Should the disc need to be formatted, the status column in the HDD Management interface will indicate “Not format”. If the HDD STATUS on your HDD MANAGEMENT interface appears as “Normal”, then your HDD does not need to be formatted.

TOTAL SPACE refers to the total space size of your HDD.

FREE SPACE refers to the total amount of unused space available on the Hard Drive.

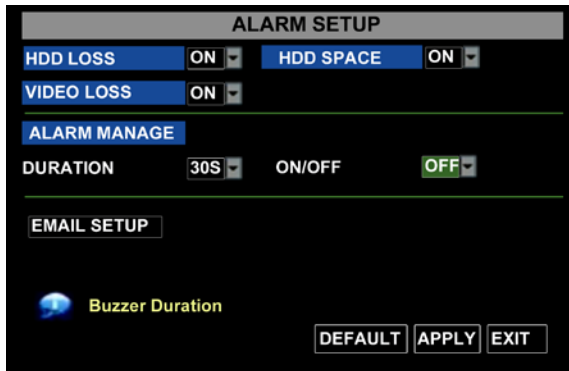
USABLE REC TIME refers to the amount of recording time you have left on your system based on the current settings and configuration details.

OVERWRITE on the HDD Management interface allows you to choose from a pull down list to enable your system to automatically overwrite the oldest recorded files on your system once the hard drive is full or to turn automatic overwrite off. Choose “Enable” or “Off” from the pull down list depending upon your preferences.

The **HDD FORMAT** button in your HDD Management interface formats your HDD by erasing all the data and files that are on the disc. Please note that you will not be able to record any files to your HDD until it has been formatted after it has been installed in your DVR system. Clicking on the **FORMAT HDD** button will generate a prompt which warns “Formatting HDD will erase all data. Are you sure you wish to Format?” Click the “OK” button at the bottom of that prompt to continue. You will then receive a “successful format” notification and the system will restart automatically.

USB FORMAT: Use this option to format USB devices.

5.2.7.2: Alarm Set



(Picture 34)

Clicking on the ALARM icon in the Device Management interface (Picture 32) will allow you to configure your ALARM settings. Once you click on the icon a pop up Alarm Setup interface as illustrated in Picture 34 will appear and you will be able to configure the various settings directly through here. Some of the configurations you will be able to configure through the Alarm Setup interface include alarm buzzer notification for video loss, HDD connectivity problems as well as your ability to be notified by email when an alarm is generated.

A more detailed description of the various tabs that appear on the Alarm Setup interface (Picture 34) are as follows, along with a more thorough account of the options associated with the pull-down menus associated with them:

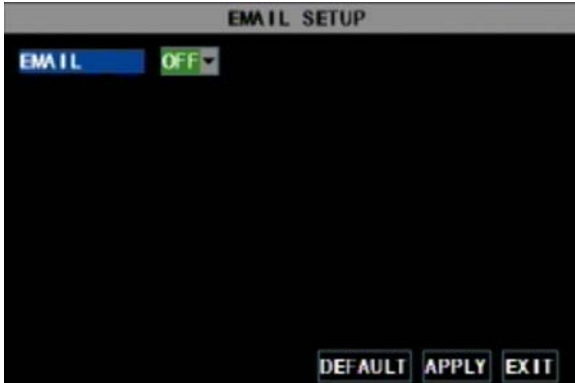
- The **HDD LOSS** tab allows you to choose from a drop down list of “On” and “Off”. Choosing the “On” option will generate an alarm buzzer when the connection to your HDD has been lost, your system does not detect a connected HDD or your system detects that your HDD needs to be formatted. Choosing the “Off” option turns this buzzer notification off.

The HDD Loss alarm notification is designed to notify you when your system has its connection with your HDD or that there is some sort of breach which has occurred between your HDD and your DVR system.

- The **HDD SPACE** tab allows you to choose from a drop down list of “On” and “Off”. Choosing the “On” option will generate an alarm buzzer when the HDD is running out of storage space. Choosing the “Off” button disables the alarm notification when your HDD is running out of storage.
- The **VIDEO LOSS** button allows you to choose from a drop down list of “On” and “Off”. Choosing the “On” option will generate an alarm buzzer when video loss occurs. Choosing the “Off” button disables the alarm notification when video loss occurs.

A Video Loss notification is designed to notify you that there has been some sort of breach that has occurred that is causing your system to lose video feed such as camera damage, disconnected camera cables or a power supply malfunction.

- The **ALARM MANAGE** tab allows you to choose from drop down lists to set the alarm duration (0s, 30s, 1minute, 2minute, 5minute) and set your buzzer notification On or Off.
- The **EMAIL SETUP** button allows you to configure your system to send you an email when motion has been detected by your system. To configure your email notification settings, click on the EMAIL SETUP button and you will generate an EMAIL SETUP interface as illustrated in Picture 35. In the EMAIL SETUP interface, choose the ON option in the pull down menu. Choosing the “On” option will generate list of options to choose from to customize your SSL, SMTP PORT, SMTP server, Send and Deliver Servers and your email account password. (Picture 36). Your SSL button turned to “On:” will allow an extra layer of protection to keep your email account and password from being hacked.



(Picture 35)



(Picture 36)

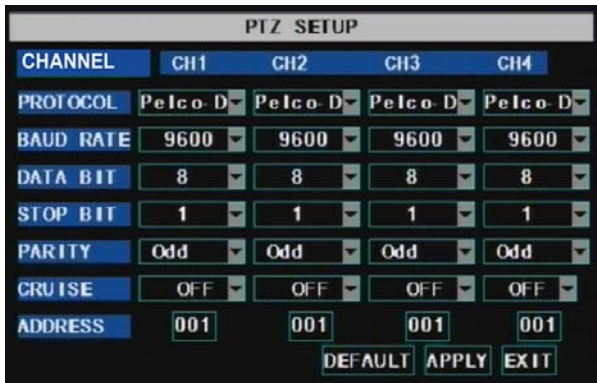
You can obtain the correct settings for your SMTP server and the SSL configuration of your mailbox at your mail server's website (such as G-Mail, Yahoo, or others). Brief explanations of the information you need to obtain from your Email server are as follows:

SMTP Port: indicates sender port of SMTP server. Generally the SMTP port value is 25. There are exceptions however and you should check with your Email server's website.

SMTP Server: indicates server address you use.

Sender Email: indicates sender's email address. The email address should be consistent with the server you use. That is to say, when you use email address – aaa@gmail.com, the according server should be smtp.gmail.com.

Receiver Address: indicates receiver's email address. The email address is used to receive image transmitted from motion detection alarm of DVR. Please clear the images you have received as soon as possible to avoid overloading your email account.

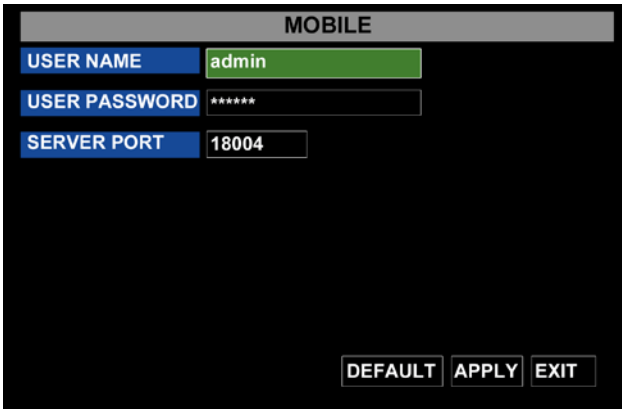


(Picture 37)

5.2.7.3: PTZ Setup

Clicking on the PTZ Setup icon in the Device Management interface (Picture 32) will allow you to configure your PTZ settings. Once you click on the icon a pop up PTZ Setup interface as illustrated in Picture 37 will appear. Select the channel you want to control in the top row of the PTZ interface screen and set the PTZ protocol from the protocol drop-down menu (Pelco-D or Pelco-P); the Baud Rate from the baud rate drop down menu (1200, 2400, 4800 or 9600); the Stop Bit rate from the stop bit drop down menu (1 or 2); the Parity Check from the parity drop down menu (None, Odd or Even Mark Space); and the Address Code and Cruise status accordingly. Please note the above mentioned channel settings must match the settings of the PTZ camera.

5.2.7.4: Mobile Setup



(Picture 38)

Clicking on the MOBILE icon in the Device Management interface (Picture 32) will allow you to configure your Mobile Phone settings. Once you click on the icon a pop up MOBILE Setup interface as illustrated in Picture 38 will appear.

User Name: indicate user name of DVR.

User password: indicate user password of DVR

Server port: Mobile monitoring port. Setting range is between 1024 and 65535. Default setting is 18004.

Note: Connect the DVR to the Internet before setting the DVR port number and make sure the server port number is not the same as the network menus.

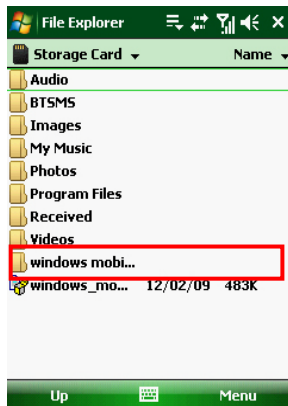
5.2.7.5: Mobile Phone Access

The DVR is currently compatible with mobile phones running Windows Mobile, Symbian operating systems and iPhones on 3G networks. Before you can access the DVR from a mobile phone you need to setup the Network Configuration on the DVR. Refer to Section 5.2.3 Network Setup for complete directions for how to do this. You also need to go to the Main Menu then Devices then Mobile and enter your user name and password, and set the Server Port to 18004. This port also needs to be forwarded to the IP address of the DVR along with the ports from 5.2.3 Network Setup.

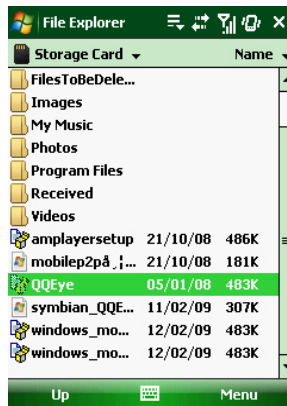
Please note that you can only see one channel at a time when viewing from a mobile phone. The speed of the display depends on the speed of the internet connection.

When accessing your DVR from a mobile phone using a Windows Mobile operating system, follow these steps:

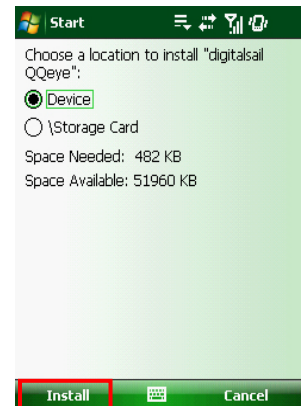
1. Webcam installation: Begin by installing the webcam program that is included on the CD that comes with the DVR by copying the "QQeye.CAB" file to the mobile phone. You can do this by attaching the mobile phone to a computer and copying the file from the CD to the memory card on the phone, or by copying the file from the computer to the phone's memory card through a memory card reader or through a Bluetooth connection.



(Picture 39)

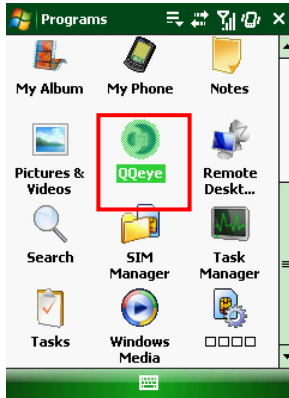


(Picture 40)

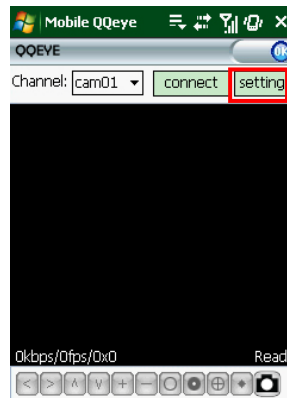


(Picture 41)

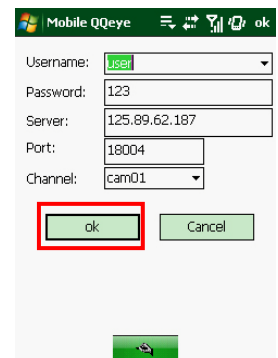
- Click the windows mobile folder (red box in Picture 39) and choose the file “QQeye” (Picture 40). Selecting the file generates a dialog box depicted by Picture 41. The default file location as shown in Picture 41 is “Device”; however, you can also choose the “Storage Card” option to save it to a memory card.
- Choose your storage location and click the [Install] button (red box in Picture 41) to start the installation.



(Picture 42)



(Picture 43)



(Picture 44)

- Once installation is complete, click on the QQeye icon in your Programs menu illustrated in Picture 42 to start the QQeye program.
- Once in the program, click on the [Setting] button in the upper right hand corner of your QQeye program dialog box (Picture 43), and you will be able to access the Mobile QQeye user settings dialog box shown in Picture 44. The Following information is required to set this up correctly:

User name: same as user name setup in DVR under Menu, Devices, Mobile

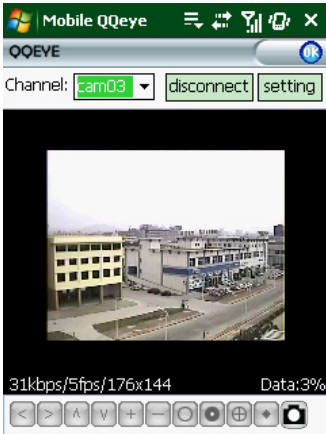
Password: same as password setup in DVR under Menu, Devices, Mobile

Server address: Public IP address of router DVR is connected to.

Web port: Same as the Server Port you setup in the DVR, it needs to be forwarded to the IP address of the DVR, setting range is between 1024 and 65535, the default setting is 18600. Note: this port is in addition to the ports used for standard remote access.


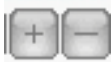



Channel: Select the channel from the DVR you want to monitor and click [OK] button (red box in Picture 44).

- Once you configure your settings (Picture 44) and have hit the OK button, you will then be taken back to the Main screen (Picture 43) and from here, you can choose the camera you want to view from the pull down menu.
- Click the [Connect] button (Picture 43) in the main menu and you will see an image of the live feed from your DVR (Picture 45). Clicking the [Disconnect] button will discontinue your video feed.
- The [Setting] button on your main menu interface (Picture 43) will allow you to modify the display image and allow you to choose from a variety of display modes including: Normal and full-screen.
- The main menu interface (Picture 43) also displays the network status information, network transmission speed, frame rate and image resolution in the lower left corner of your screen (Picture 45). The buffer percent and connection errors are shown in the bottom right hand corner of the screen (Picture 45).



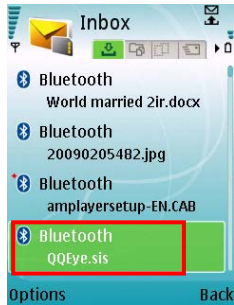
(Picture 45)

From left to right, the buttons on your main menu interface work with your PTZ camera as follows:

-  Navigate video image Left, Right, Up, Down
-  Zoom In and Zoom Out
-  Increase or Decrease Focus
-  Increase or Decrease Brightness
-  Snap to Capture Screen Image

When accessing your DVR from a mobile phone using a Symbian operating system, follow these steps:

1. First you need to copy the “QQeye.CAB” file included on the Setup CD disk to your mobile phone. There are two different ways you can do this:

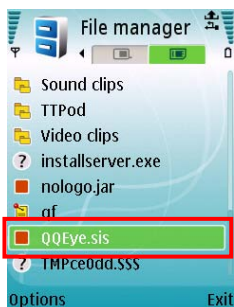


(Picture 46)

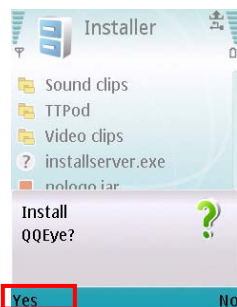
- a. You can copy the file from the installation CD to your computer. Once you do this, you can then transfer that file from your computer to your phone’s memory card using a memory card reader that is connected directly to your computer.
- b. You can copy the file from the installation CD to your computer and then use a Bluetooth connection to send this file to your phone’s Inbox (Picture 46).

2. Once you have copied the QQeye program to your phone, you can then click on it to begin the installation process (Picture 47). Once the installation process has been initiated, you will receive a prompt asking you if you would like to install the QQEye program (Picture 48). Click the Yes button on the lower left hand side of the prompt and continue the installation process as instructed.

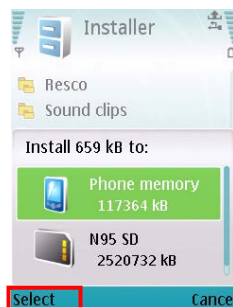
3. When prompted for an install location as illustrated in Picture 49, choose “Phone Memory” by clicking on it and hitting the Select button on the lower left hand side of the prompt screen. You will then receive an installation status screen and an “Installation Complete” message (Picture 50) on your screen once the installation process is complete.



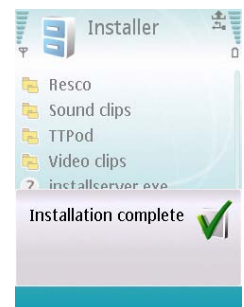
(Picture 47)



(Picture 48)

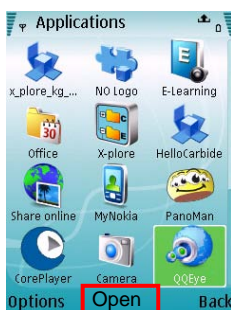


(Picture 49)

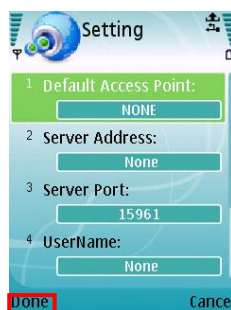


(Picture 50)

4. After you have installed the software to your mobile phone, you can then go to the Applications folder of your phone and select the “QQEye” Program as shown in Picture 51. Click on Open at the bottom of your screen and the settings menu will appear as illustrated in Picture 52. Click the Done button at the bottom of that screen and you will then see an image of your live video feed appear as illustrated in Picture 53.



(Picture 51)



(Picture 52)



(Picture 53)

The following information is required to set up access to your Symbian based mobile phone:

Default Access Point : Input the access point. System default for the access point is GPRS connection.

Server Address : Input the public IP address of the router the DVR is attached to (refer to section 5.2.3 Network Setup this product manual).

Server Port : Same as the web port setting on the DVR, you need to forward this port from the Router to the DVR. Setting range is between 1024 and 65535, the default setting is 18600. Note: this port is in addition to the ports used for standard remote access.

User Name: Same as user name setup in DVR under Menu, Devices, Mobile

Password : Same as password setup on DVR.

When accessing your DVR from an iPhone, follow these steps:

1. Ensure that your DVR is running the latest Firmware version 090706 or higher. Go to the Main Menu of your DVR and click on the Devices Icon, then the Mobile icon (Picture 32).
2. Set your user name and password (i.e., admin/admin), and set your Port to 18004.
3. From the PC, forward port 18004 of the router to the IP address of the DVR.
4. Once you have set your DVR and forwarded your port, go to your iPhone and go to the APP Store. Search the App Store for APlayer, click the FREE button to begin the download (note that you must have an iTunes account to download applications).
5. Once you have downloaded the APlayer application, click on the icon on your phone to access the APlayer program (Picture 54). On the bottom right hand corner of your program screen, click on the settings button to access the IP and port information.
6. In your settings dialog box (Picture 55), use your Public IP to populate the Server IP field and ensure that the port is set to 18004. Use the same User ID as the one you use for your DVR.
7. Once you have set your phone up as directed in the previous step, you will see a control screen on your iPhone which enables you to view your live feed, adjust various view settings and access the individual cameras set up through your DVR (Picture 56). Click the Play button on your APLAYER to connect to your DVR and you will get a live screen feed pop up as illustrated in Picture 56. You can choose to view the various cameras that are connected your DVR system by pushing on the number 1-4 on this main screen (Picture 56).



(Picture 54)



(Picture 55)



(Picture 56)

If you have an 8 camera system you would click on the down arrow in the bottom row of your main screen (Picture 56) to view the buttons to access the next 4 cameras. If you have a 16 camera system, continue to click on the down arrow to access the rest of the cameras.

5.2.7.6: Motion Detect

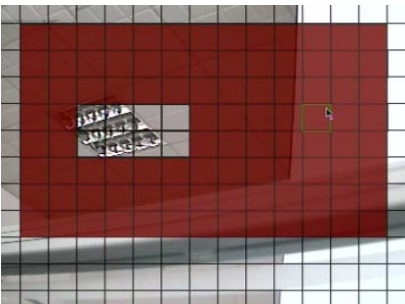


(Picture 57)

Clicking on the MOTION icon in the Device Management interface (Picture 32) will allow you to configure your Motion Detection settings. Once you click on the icon a pop up MOTION DETECTION Setup interface as illustrated in Picture 57 will appear and you will be able to configure the various settings directly through here. The [Motion detection] Menu has three sections, including Channel Status, Sensitivity and Motion area.

Channel STATUS: This option allow you enable motion detection on any channel.

SENSITIVITY: This option allows you to set sensitivity level of motion detection from 1 to 4 with 4 being the most sensitive.



(Picture 58)

MD AREA: This option allows you select the area you want to be sensitive to motion. The area is separated into a 13*10 grid as depicted in Picture 58. When any object moves into the area you have designated to protect, recording will be triggered. You can choose which areas to protect by clicking on the individual squares of the grid (as illustrated by the red blocks chosen in Picture 58). Motion triggered recording will not occur in the area outside of the chosen grid (as illustrated by the semi-transparent blocks in Picture 58).

5.2.8: System Function



(Picture 59)

The Main Menu interface (Picture 4) allows you to access the System Setup menu by clicking on the System icon. The System Setup menu (Picture 59) gives you access to these sub-menus to configure their settings individually: Time Set, User Password, Audio/Video Setting, Language select, System Info and System Maintenance.

5.2.8.1: Time Set



(Picture 60)

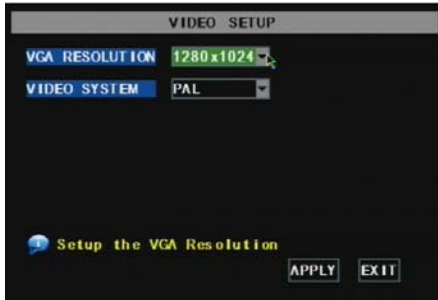
Click the [Main menu→System→Date/Time] in turn to Enter into the time setup menu shown as Picture 60. In the Time Setup menu, you can modify your system date and time; set the date/time and time zone format, and enable daylight savings time.



(Picture 61)

5.2.8.2: Password

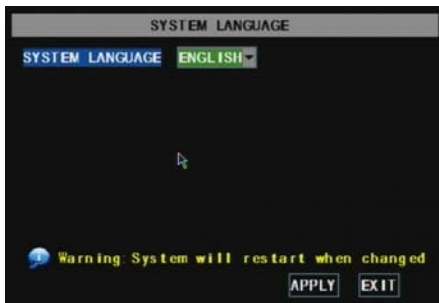
Click on [Main menu→System→Password] to adjust your system’s password settings. This will generate a Password Setup dialog box that will allow you to enable or disable password protection and also set up an administrator password (Picture 61). Turning your Password Enable setting to “On” will generate a User Password field and Administrator Password field to populate. The password option supports up to 6 characters.



(Picture 62)

5.2.8.3: Video Setup

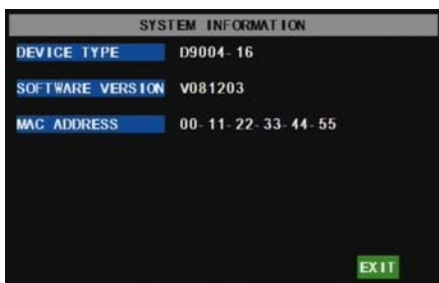
Click on [Main menu→System→VID] to adjust your system’s video preferences. This will generate a Video Setup dialog box (Picture 62) where you can set your Video System settings to PAL or NTSC (NTSC is standard in the USA). Please note that this model is not equipped with a VGA port so the ability to adjust your system’s VGA resolution settings is not supported.



(Picture 63)

5.2.8.4: Language

Click on [Main menu→System→Language] to adjust your system’s Language preferences. The [System Language] menu will appear as illustrated in Picture 63. Choose the language you want to use on your DVR from the drop down menu then click [APPLY] button. The selection will be available after system Auto restarts.



(Picture 64)

5.2.8.5: Info

Click the [Main menu→System→Info] to view your system’s device type, software version and your MAC address.

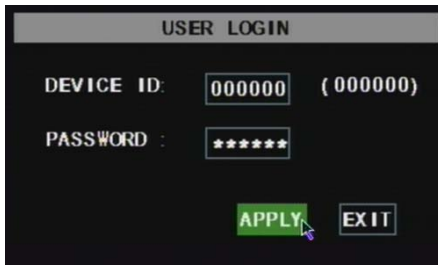
5.2.8.6: System Maintenance



(Picture 65)

Click the [Main menu→System→Maintain] to access the System Maintain menu as shown in Picture 65. This menu allows you to reset the DVR to factory default settings, update system software (firmware), and set system auto-maintenance. Setting your Auto Maintain option to “On” in the drop down menu will set your DVR to automatically check for updates on restart and you can also update your system manually by clicking on the [System Update] button. Please note that you must click on the [Apply] button in order for any changes to take effect.

5.3: Menu Lock



(Picture 66)

Your DVR is equipped with a Menu Lock feature to ensure that your settings and configurations are tamper-proof. Right clicking on your mouse and clicking on [Menu] the [Lock] from the popup menu will lock your DVR and you will be required to enter a password to unlock this feature as illustrated in Picture 66). Please note that only the System Administrator has full access and authority over Main Menu operations.

5.4: Video Search

Right clicking on your mouse and clicking on the Video Search option from your pop-up menu will allow you to search through your recorded files and playback recordings. For more information on searching through files, refer to Section 5.24.

5.5: PTZ Control

As discussed in Section 5.2.7.3, you have the ability to connect a PTZ camera to your DVR system. To operate the PTZ camera once you have connected it to your system and configured it correctly following the directions in 5.2.7.3, you will need to access the PTZ Camera interface illustrated in Picture 67. To do this, right click on your mouse and click on the PTZ option from your pop-up menu. From the PTZ Camera interface, you can Zoom in and out, adjust the camera Focus and increase or decrease the brightness of your image. Click Z+&Z- keys to zoom In or out, click F+&F- keys to control camera focus and click I+&I- to adjust the brightness.



(Picture 67)

Cruise Setup

Open the auto cruise function on the PTZ setting menu to configure your auto cruise settings as illustrated in Picture 68. The functions associated with each of the buttons on the Cruise Setup interface are as follows:

Channel Select: Allows you select the channel with the PTZ camera.

Total: Allows you to set the bit quantity.

Preset: Saves the preset point. After setting channel and setting the position by adjusting PTZ direction key you click [Set] button to setup the pre-set point. Please note that you have to click the [Save] button for the set up to be complete.

Cur Point: System has default starting (current) cruise point as 01. You can use this option to set additional cruise points.

Stop Time: Sets the pause time at each stop.

GOTO : Allows you to go to specific preset points.

Clean: Removes changes you made to the settings.



(Picture 68)

Note: this DVR model supports up to 100 pre-set points but you may be limited to the number of pre-set points your PTZ camera allows.

5.6: Record

Right clicking on your mouse and clicking on [Start Record] from the pop up menu will allow you to start manual recording.

5.7: Stop Recording

Right clicking on your mouse and clicking on [Stop Record] from the pop up menu will allow you to stop manual recording.

Chapter 6: Net-Viewer Program

6.1: Enable Plug-Ins and Log-In to Net-Viewer



(Picture 69)

Refer to Section 5.2.3.5 to ensure that your pop-up blockers are turned off and your ActiveX is enabled prior to running the Net-Viewer program. Once you have disabled your pop-up block option and enabled ActiveX, open an IE Browser window and input the IP address and web port of your DVR (i.e., <http://172.18.6.202/>) into the address bar. This will generate a Net-Viewer log in screen (Picture 69) prompting you to input the necessary information required to view a live video feed from your DVR system. If you are experiencing difficulties initiating the log in screen, make sure your browser's safety level or firewall settings are not set too high. Refer

to section 5.2.3 Network Setup to ensure that your network configuration is correct, your system ports are forwarded correctly and ActiveX is enabled. Once you have entered in the correct information, you will be able to view your DVR remotely through the Net-Viewer program and you will see a live feed similar to the one depicted in Picture 70.

6.2: Main Interface of Net-Viewer



(Picture 70)

Refer to Section 6.2.2 for a more detailed description of the actions associated with the specific buttons of the Net-Viewer illustrated above (Picture 70). However, a general description of the buttons is as follows:

- 1 – Menu Bar
- 2 – PTZ Panning Options
- 3 Through 4 – PTZ View Options
- 5 Through 9 – Live Play Controls

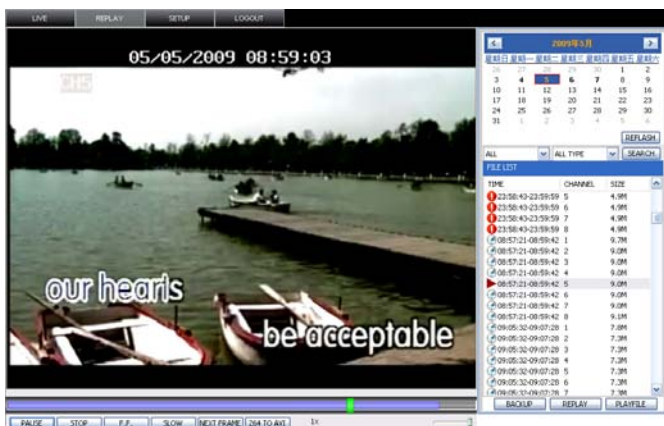
6.2.1: Menu

In the Net-Viewer Main Interface window illustrated in Picture 70, the Menu toolbar is on the top left hand side of the screen. The toolbar includes a button for [Live] video, the option to [Replay] video, access to your [Setup] controls and a [Logout] button.

6.2.1.1: Live

As shown the Net-Viewer Main Interface window illustrated in Picture 70, the [Live] button will allow you to display a live video feed as illustrated in Picture 70. The live display mode will appear upon logging in to the Net-Viewer program.

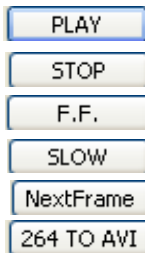
6.2.1.2: Replay



(Picture 71)

As shown the Net-Viewer Main Interface window illustrated in Picture 71, the [Replay] button allows you to replay previously recorded footage and display it in your viewing window as shown in Picture 71. To find previously recorded footage, select the date from the menu and choose the file from the file list that will be displayed once you click on your desired date (Picture 71).

The buttons at the bottom of your Net-Viewer interface screen are as follows:



Play Button: [Play]/[Pause] recorded footage

Stop Button: Stop playing recorded footage

F.F. Button: Fast forward through recorded footage

Slow Button: Decrease playback speed of recorded footage

Next Frame: Playback recorded footage frame by frame

264 TO AVI Button: Convert file from H.264 to AVI

6.2.1.3: Setup

As shown the Net-Viewer Main Interface window illustrated in Picture 70, the [Setup] button will allow you to enter into a sub menu which will allow you to configure the controls for your recording preferences, alarm preferences, PTZ control configuration and your network and system setting menus. The various tabs within this Setup sub menu are enumerated as follows:



(Picture 72)

① Record

The [Record] tab in the Setup menu allows you to control the specific channels you wish to record (Picture 72). You are also able turn each channel off individually and adjust the parameters of your recorded images such as the quality and resolution. Audio recording controls can also be controlled through the [Recording Mode] menu.

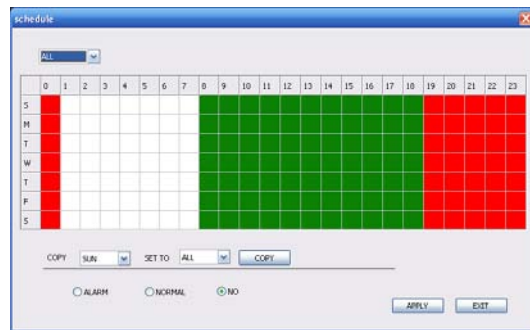
② Alarm

The [Alarm] tab in the Setup menu allows you to control the alarm options on the individual channels remotely via the Net Viewer program (Picture 73). Clicking on the drop down list of the I/O Alarm option for each Channel on the [Alarm] tab (Picture 73) will generate an Alarm Schedule interface which will allow you to configure the specific parameters of your alarm scheduled recording (Picture 74). Refer to Section 5.2.2 of this User Manual for a more thorough explanation of alarm triggered recording.

Other options that you can configure on the [Alarm] tab of your Setup menu include the parameters of motion detect recording, video loss notification, HDD space notification, HDD loss notification, and your alarm output and record time settings. For more details on how to configure the options of these specific features, refer to Section 5.2.7.2 of this User Manual.



(Picture 73)



(Picture 74)



(Picture 75)

③ PTZ Control

The [PTZ] tab in the Setup menu (Picture 75) will allow you to control the specific options related to your PTZ camera such as the PTZ Camera Protocol, PTZ Camera location (address), Baud Rate and Data and Stop Bit parity preferences. For a more thorough explanation of your PTZ camera controls, please refer to Section 5.2.7.4 of this User Manual.



(Picture 76)

④ Network

The [Network] tab in the Setup menu (Picture 76) will allow you to control the specific network configuration options. To ensure proper Network configuration settings, you should refer to Section 5.2.3 of this User Manual.



(Picture 77)

⑤ Setting

The [Setting] tab in the Setup menu (Picture 77) will allow you to control the Net-Viewer program settings. From this tab, you can set the path to where you would like to save screen capture images and other files by clicking on the “...” button. You are also able to configure other Net-Viewer options through this tab such as Internet Bandwidth, Internet Password Enabling and Daylight Savings Time.



(Picture 78)

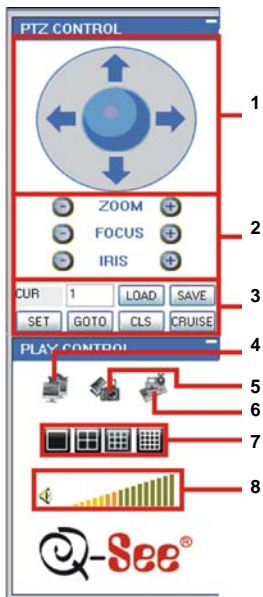
⑥ Host Info

The [Host Info] tab in the Setup menu (Picture 78) will allow you to check on the amount of space and recording time you have left on your HDD, tell you about the Net Viewer software version you are using and list your MAC Address.

6.2.1.4: Logging Out of Net-Viewer

To log out of the Net-Viewer program, go to the main interface window illustrated in Picture 70 and click on the [Logout] button on the menu bar.

6.2.2: PTZ and Live Play Controls



(Picture 79)

1. **PTZ Panning Direction:** Controls the panning direction of your PTZ Camera
2. **Zoom, Focus and Iris:** Increase or decrease the zoom, focus or brightness of your picture
3. **Bit Rate Settings:**
 - **CUR:** Displays current bit rate. You can set the bit rate manually by inputting your desired rate in the accompanying box
 - **LOAD:** Reloads the last saved bit rate
 - **SAVE:** Saves the current bit rate
 - **SET:** Allows you to choose from a preset bit rate setting (for more information, refer to Cruise Setup in Section 5.7
 - **GOTO:** Allows you to go to a specific preset bit rate
 - **CLS:** Clears the last saved bit rate setting
 - **CRUISE:** Allows you to choose from a preset bit rate setting (for more information, refer to Cruise Setup in Section 5.7
4. **Live Display:** Turns the Live Display On or Off
5. **Screen Capture:** Captures a screen image and saves it to your PC
6. **Record:** Record images to your DVR system from Net Viewer
7. **Channel Display Grid:** allows you to choose from full screen, 4-Channel, 8 Channel and 16-Channel view mode
8. **Volume Control:** Adjusts the audio level of your volume

Chapter 7: Specifications

Model Number	QR414
Video System	NTSC or PAL (Optional)
Compression Format	Video: H.264 Audio: 8kHz*16bit ADPCM
Video Input/Output	4-CH BNC Input / 2-CH BNC Output
Audio I/O	1-CH RCA Audio Input / 1-CH RCA Audio Output
Display Resolution	D1:704x576(PAL) 704x480 (NTSC)
Frame Rate	Single CH PAL: 25 fps NTSC: 30 fps
Recording Resolution	PAL: (CIF:352x288) (HD1:704x288) (D1:704x 576) NSTC: (CIF:352x240) (HD1:704x240) (D1:704x 480)
Recording Frame Rate (Shared)	PAL: (CIF:100fps) (HD1:50fps) (D1:25fps) NSTC: (CIF:120fps) (HD1:60fps) (D1:30fps)
Hard Drive	1 SATA HDD, up to 1TB ; USB removable HDD (Backup)
Video Mode	Always/Schedule/Manual/Motion Detection/Sensor Triggered
Record Pack Time	15/30/45/60 Min. Adjustable
Video Backup	USB Flash Drive, Removable HDD, USB Burner, Network Backup to AVI File Format
Playback Mode	PLAY /SLOW /FWD/Frame by Frame
Alarm Input/Output	None
Alarm Type	Video loss/HDD Space/HDD Loss
PTZ Control	Built-in RS-485 port, supports PELCO-P & PELCO-D
USB 2.0 Port	Supports USB Mouse, Removable HDD, USB Flash Drive to Backup to AVI File and Upgrade System
Ethernet	One RJ-45 10M/100M Self-Adaptable Ethernet Interface
Network Protocol	Supports TCP/IP, DHCP, UDP, DDNS, PPPOE Network Protocol
Network Function	Supports Mobile Phone Surveillance, Real-Time Live Monitoring via IE-Based Browser and/or Network and Remotely Setting DVR Parameters
Power Consumption	10-15 W
Power Adapter	DC 12V;3A
Working Temperature	50°F to 104°F (10°C to 40°C)
Working Humidity	10%~90%
Dimension (W x D x H)	11.75 x 8.75 x 2.25 in (299 x 223 x 57 mm)

Chapter 8: Appendix

8.1: Operation Function Table

TYPE	TITLE	DESCRIPTION
Principle Setting	Time Setting	Setting system date, time and format and day-light saving time setting
	Language Select	Setting system language
	Ch Setting	Setting CH title and position; adjusting image color parameter value; setting CH display to ON / Off and time display/recording time overlaying to On/Off.
	Rec. Setting	Setting image quality, resolution, volume, recording mode and pack time
	Rec. Search	Time based search, channel based search and rec. mode based search.
	Rec. Playback	Specified time playback, scheduled playback, file list playback
	Playback Mode	Play, play frame by frame, multi-speed forward and multi-speed rewind
	File Backup	USB flash disk and removable HDD backup, DVD recorder backup and network download backup
	HDD Manage	Check HDD status, usage space, setting HDD auto-overwrite
	Vid/Aud Setting	Adjust VGA resolution, select system and volume control
Advanced Setting	User Password	Setting or modifying user password
	Alarm Setting	Setting HDD lost, HDD space, video loss, I/O status, alarm management and Email alarm
	Motion Detection	Setting on/off status of MD; select sensitivity and setting motion detection area.
	PTZ Control	Selecting Channel and setting PTZ protocol, baud rate and PTZ address for the Channel
	MP Monitor	Setting user name, password and server port.
	System Maintenance	Setting system auto maintenance, maintenance time regularly, system upgrade, ex-factory default value recovery and manual restart system
Network Setting	Network And Port Setting	Selecting network mode and setting net-viewer port, web port, DNS and DDNS parameters
Network Function	Live Display	Real time video input remotely
	Remote Recording	Setting recording mode and status of DVR remotely
	Remote Playback	Check local recording history via network
	PTZ Control	Remotely control PTZ camera, position, focus, zoom and iris etc.
	Parameter Set Of DVR Remotely	Setting local CH display, recording, alarm, PTZ control parameter value via network
	Network Download	Backup recorded files via network
Auxiliary	System Info	Check device model, software version and MAC address

Function	()	In addition to illustrating picture, parenthesis generally indicate optional parameter; on [File List] mode, the button allows you to display the next page.	
Menu Button	Confirm	The button allows you save the modification of parameter value.	
	Recover Default	The button allows you recover default value of current menu or system	The option will be effective once confirmed
	Exit	Exit current menu	
Basic Setting	Time Setting	Adjust system time	
	HDD Manage	Format HDD	The option will be effective after restart.
	Net Setting	Set network type and web port (except of PPPoE, other type need forward web port to router of DVR)	The option will be effective after restart.
	System Info	Modify MAC address	
	Mp Monitoring	Set relative parameters	
	Other	PTZ setting, Recording set and Language select etc	

8.2: Setting up Alarm Record Mode

Please note: “⊥” means “Alarm On Not Recording”; “AMR” means “Alarm Recording”; “NLR” means “normal recording”; and “NOR” stand for “ No Recording”. Once alarm is triggered, alarm icon will occur, and when many alarms are triggered, alarm remarks will occur on the screen.

Recording Alarm Setting		Alarm Icon	Recording Mode				
			Power On	Scheduled			Manual
				AMR	NLR	NOR	
Alarm Mode	MD alarm	[M]	AMR	AMR	NLR	⊥	NLR
	I/O triggered alarm	[I]	AMR	AMR	NLR	⊥	NLR
	HDD loss, HDD space full	[H]	⊥	⊥	⊥	⊥	⊥
	Video Loss	Video Loss	⊥	⊥	⊥	⊥	⊥

When DVR is in recording mode, **[R]** icon or **[M]** icon will appear on the screen. But when there are **[I]** icon and **[M]** icons on the screen it indicates a motion alarm was triggered. When **[H]** icon appears on the screen, that mean a hard drive alarm has occurred.

8.3: Troubleshooting

Q: What can I do if the system does not detect the HDD?

A: Check the data and power cables and make sure they are securely connected.

Q: I have changed the password but do not remember the new password. How can I access the system?

A: If you forget the system password, enter 519070 into the password field to reset the password

Q: I am not getting any video signal on the DVR. What is wrong?

A: Check to make sure the cables are securely connected to the BNC ports on the DVR. You can also try another cable to make sure there is not a problem with the cable. Make sure you have selected the correct video format for your country (NTSC is standard USA format).

Q: Can the DVR have problems if it gets too hot? How can I prevent my system from over-heating?

A: The DVR has a fan to help it dissipate heat while it is working. Please place the DVR in a place where there is good air circulation and away from high temperatures to increase the stability and product life of your DVR.

Q: My remote control does not work when the DVR is in Live mode but the front panel buttons are working. What is wrong?

A: Make sure nothing is blocking the LED on the remote or the DVR. If both are ok, check the batteries of your remote.

Q: Can I use the hard drive from my PC in the DVR?

A: You can if the hard drive is the same type and the size supported by the DVR. However, once you install the hard drive in your DVR, it will be formatted for use in the DVR and will not be read by your PC.

Q: Do I have to stop recording to playback files on the DVR?

A: No you do not have to stop recording, the DVR will support both functions at the same time.

Q: Can I erase files from the hard drive of the DVR?

A: You can not erase individual files. You would need to format the hard drive which will erase all of the files.

Q: Why can't I log-in to the Net-Viewer program?

A: Please verify that the Net mode is correct, the cable to the RJ-45 port is well connected to the DVR and the router, and that you are using the correct password. Also check to make sure your ActiveX controls are enabled and your pop-up blocker is turned off.

Q: We have attached a PTZ camera but cannot control it. What is wrong?

A: Verify that the protocol, baud rate, address and other settings on the PTZ camera match the settings you have put into the DVR. Make sure the data cables are attached firmly to the RS485 port on the DVR.

Q: Why does the Buzzer keep sounding?

A: Check to see if the Motion Detection option is enabled on your system and discern whether or not your system has detected activity. If no motion has been detected, check to see if the hard drive on your DVR has been recognized and that there is sufficient space available. Another possibility to consider is that your cameras might have lost video. If this occurs, check the power feed to the cameras and make sure that they are turned on.

8.4: System Connections

(Diagram is for reference only to show where to attach various devices to the DVR. The cameras, external alarms, USB flash drives, monitors and computers are not included with the standard DVR package)



8.5: Accessories Included

Power Cord



Ethernet Cable



Power Adaptor



User Manual



Software CD



Remote Control



USB Mouse



BNC to RCA Video Cable



Q-See Product Warranty

Thank You for Choosing a Q-See Product!

All of our products are backed by a conditional service warranty covering all hardware for 12 months from the date of purchase. Additionally, our products also come with a free exchange policy that covers all manufacturing defects for one month from the date of purchase. Permanent upgrading service is provided for the software.

Liability Exclusions:

Any product malfunction or abnormalities in operation or damage caused by the following reasons are not within the free service scope of our company:

- (1) Equipment damage caused by improper operation.
- (2) Improper equipment operation environment and conditions (e.g., improper power, extreme environmental temperatures, humidity, lightning and sudden surges of electricity).
- (3) Damage caused by acts of nature (e.g., earthquake, fire, etc).
- (4) Equipment damage caused by the maintenance of personnel not authorized by Q-See.
- (5) Product sold over 12 months ago.

In order to fulfill the terms of your warranty, you must complete the registration process after purchasing our product. To do this, simply fill out the User's Information Card below and fax or mail it in to us at the information listed below. You can also register the product by going to the www.q-see.com website and clicking on the Register link.

Questions or Comments?

Contact Us:

Mailing Address:
DPS Inc.
 8015 E. Crystal Dr.
 Anaheim, CA 92807

Customer Service:
 Phone: 877-998-3440 x 538
 Email: cs@dpsi-usa.com
 Live Chat from our Website

Website:
<http://www.q-see.com>
Fax:
 714-998-3509

Tech Support:
 Phone: 877-998-3440 x 539
 Email: ts@dpsi-usa.com
 Live Chat from our Website

Customer Information Card

User's Name	Mr./Mrs.
Company Name	
Postal Address	
Postal code	
Phone Number	
E-mail	
Model Number of Product	
Serial Number of Product	
Purchase Date	
Distributor	

The material in this document is the intellectual property of Q-See.
 No part of this manual may be reproduced, copied, translated, transmitted, or published in any form or by any means without our company's expressed written consent.

1. Our products are under continual improvement and we reserve the right to make changes without notice. No guarantee is given as to the correctness of its contents.
2. We do not accept any responsibility for any harm caused by using our product.
3. The product picture may differ from the actual product, which is only for your reference. The accessories may be different according to the region you purchased our product. For more information on specific accessories, please contact your local distributor.

Copyright Reserved