

HOW TO SET UP WINDOWS MOBILE PHONES TO VIEW DVR SYSTEMS ONLINE

MODEL NUMBERS:

QSD9004, QSDR04RTC, QSDR008RTC, QSDR16RTC, QSDR16RTCB, QSDR174RTC

Prior to setting up your phone to view your cameras, your DVR must be set up for remote viewing.

STEP 1: On the channel display, right click and select “MAIN MENU”.



STEP 2: Move the cursor to “Devices” and click.



HOW TO SET UP WINDOWS MOBILE PHONES TO VIEW DVR SYSTEMS ONLINE

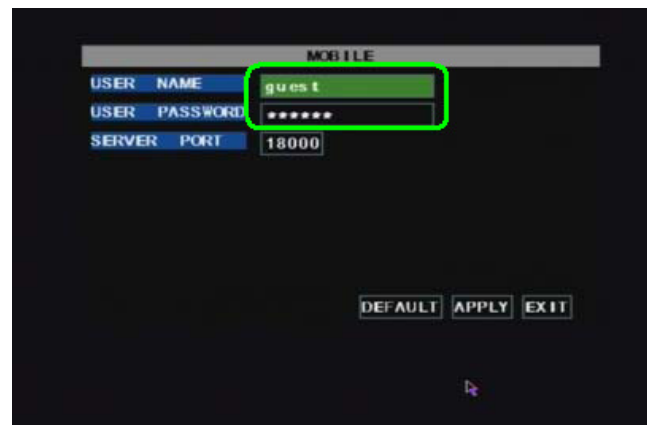
MODEL NUMBERS:

QSD9004, QSDR04RTC, QSDR008RTC, QSDR16RTC, QSDR16RTCB, QSDR174RTC

STEP 3: Move the cursor to “Mobile” and click.



STEP 4: Enter in the login information.



STEP 5: Set the server port to “18600”. (Note: you must forward this port value to your router).

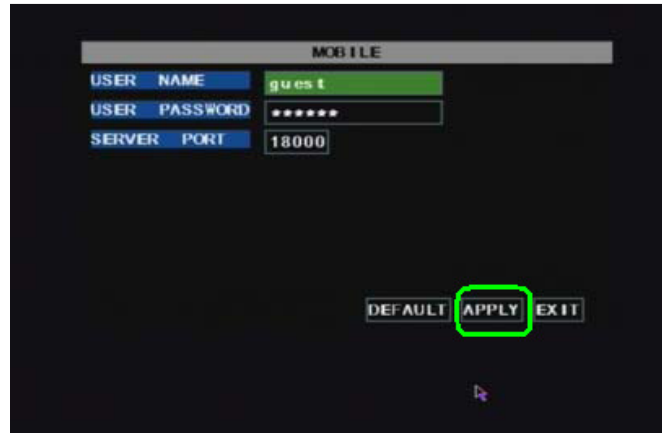


HOW TO SET UP WINDOWS MOBILE PHONES TO VIEW DVR SYSTEMS ONLINE

MODEL NUMBERS:

QSD9004, QSDR04RTC, QSDR008RTC, QSDR16RTC, QSDR16RTCB, QSDR174RTC

STEP 6: Move the cursor to “APPLY” and click.



STEP 7: Move the cursor to “EXIT” and click.

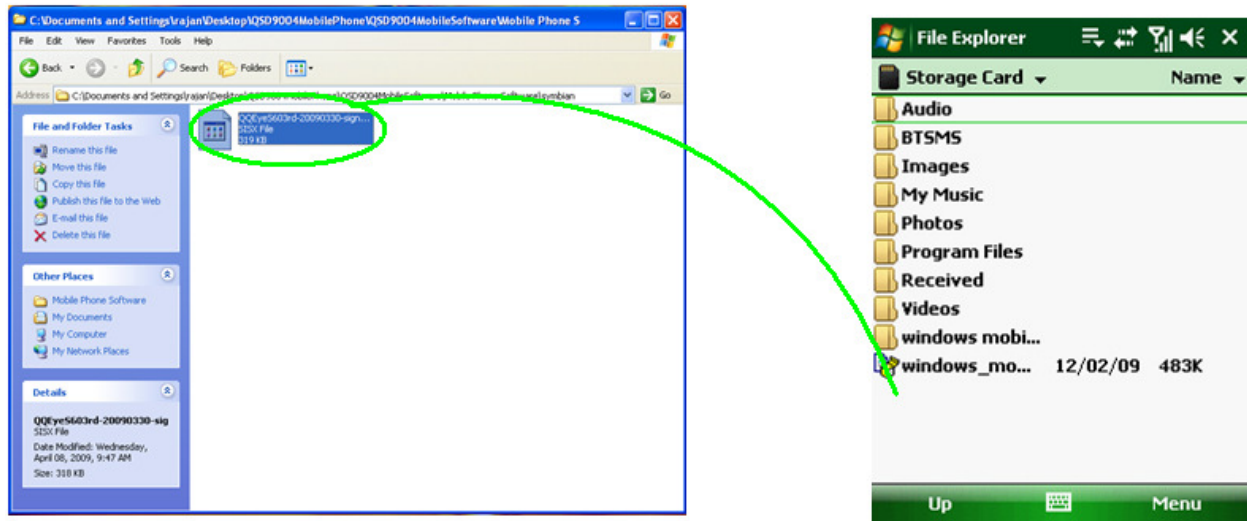


HOW TO SET UP WINDOWS MOBILE PHONES TO VIEW DVR SYSTEMS ONLINE

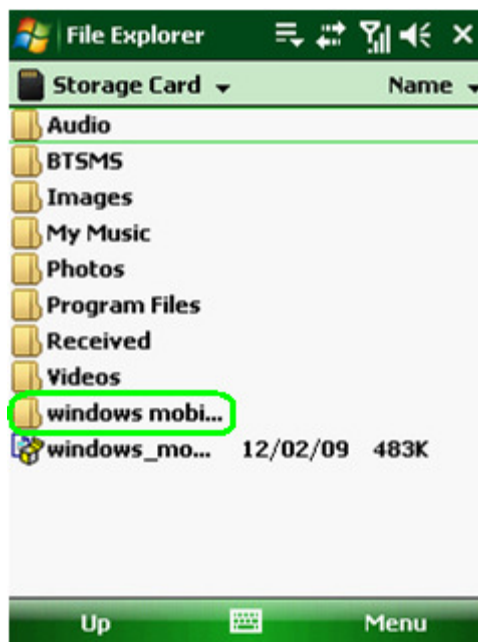
MODEL NUMBERS:

QSD9004, QSDR04RTC, QSDR008RTC, QSDR16RTC, QSDR16RTCB, QSDR174RTC

STEP 8: Install the software that came with your DVR and copy the “QQeye.CAB” file to the mobile phone. You can either physically connect your phone’s memory card to do this or use a Bluetooth connection.



STEP 9: Open the windows mobile folder to access the file within.

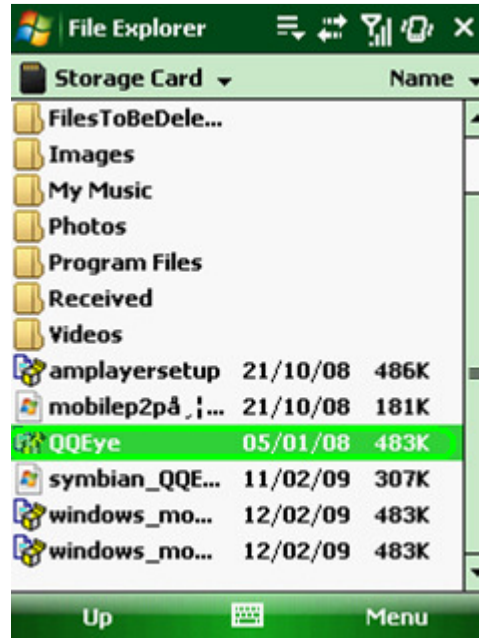


HOW TO SET UP WINDOWS MOBILE PHONES TO VIEW DVR SYSTEMS ONLINE

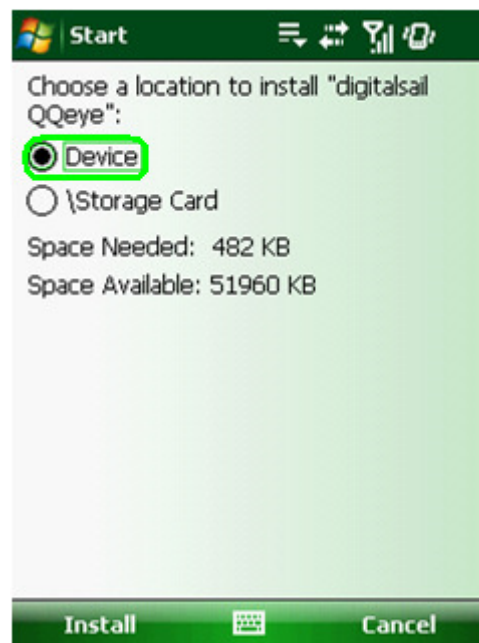
MODEL NUMBERS:

QSD9004, QSDR04RTC, QSDR008RTC, QSDR16RTC, QSDR16RTCB, QSDR174RTC

STEP 10: Open the QQEye File.



STEP 11: Select "Device" and click on "Install".

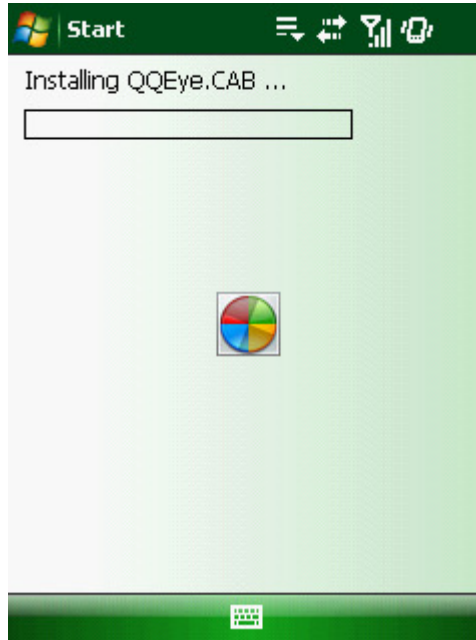


HOW TO SET UP WINDOWS MOBILE PHONES TO VIEW DVR SYSTEMS ONLINE

MODEL NUMBERS:

QSD9004, QSDR04RTC, QSDR008RTC, QSDR16RTC, QSDR16RTCB, QSDR174RTC

STEP 12: QQeye will start to install on your phone.



STEP 13: Once QQeye is done installing, go to the programs section on your phone and open the QQeye application.



HOW TO SET UP WINDOWS MOBILE PHONES TO VIEW DVR SYSTEMS ONLINE

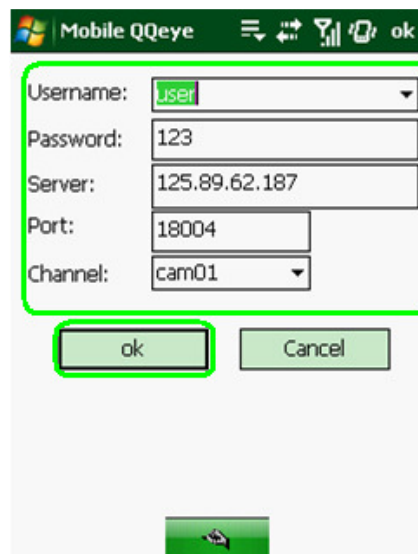
MODEL NUMBERS:

QSD9004, QSDR04RTC, QSDR008RTC, QSDR16RTC, QSDR16RTCB, QSDR174RTC

STEP 14: Click on “setting”.



STEP 15: Under “Username” and “Password”, enter the information that you entered in your DVR from Step 4. Under “Server” enter the IP address of the external IP address that your DVR is forwarded to. Under “Port”, enter the port value that you entered in Step 5. Under “Channel”, select the camera you wish to view. Once you have entered in the information, click “OK”.

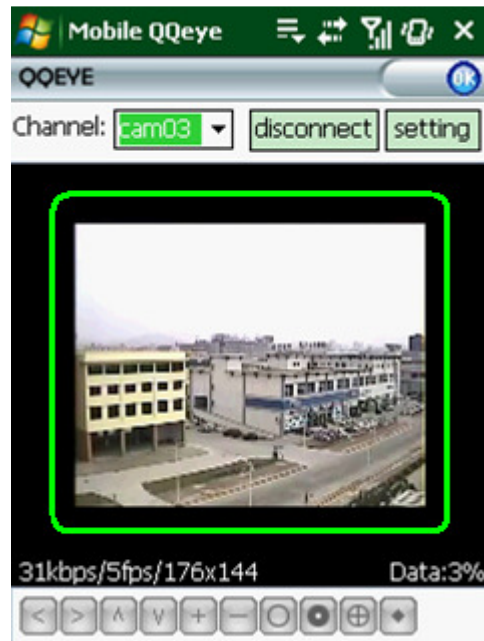


HOW TO SET UP WINDOWS MOBILE PHONES TO VIEW DVR SYSTEMS ONLINE

MODEL NUMBERS:

QSD9004, QSDR04RTC, QSDR008RTC, QSDR16RTC, QSDR16RTCB, QSDR174RTC

STEP 16: Once your phone is connected to your DVR, the camera display will appear as below.



STEP 17: If you double click on the camera display, it will become a full screen display.

