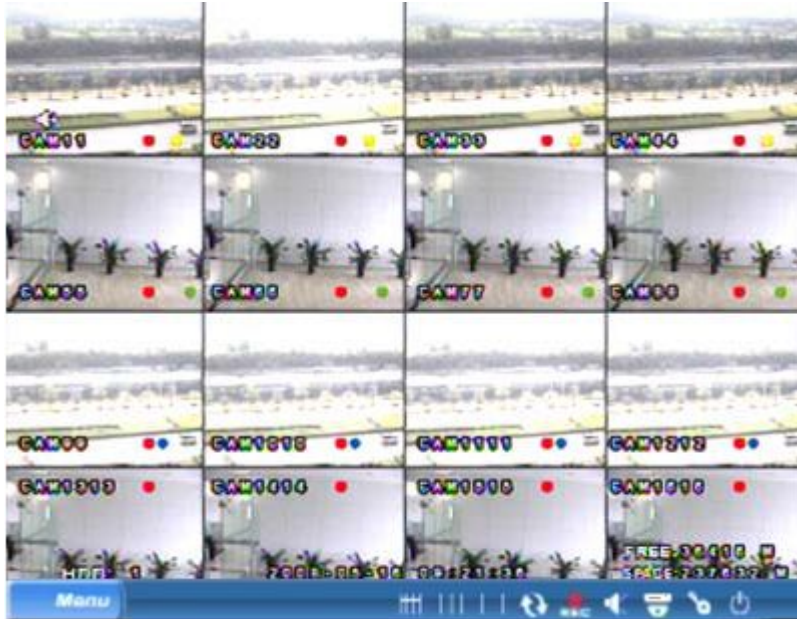


HOW TO UPDATE THE FIRMWARE FOR Q-See® DVR SYSTEMS

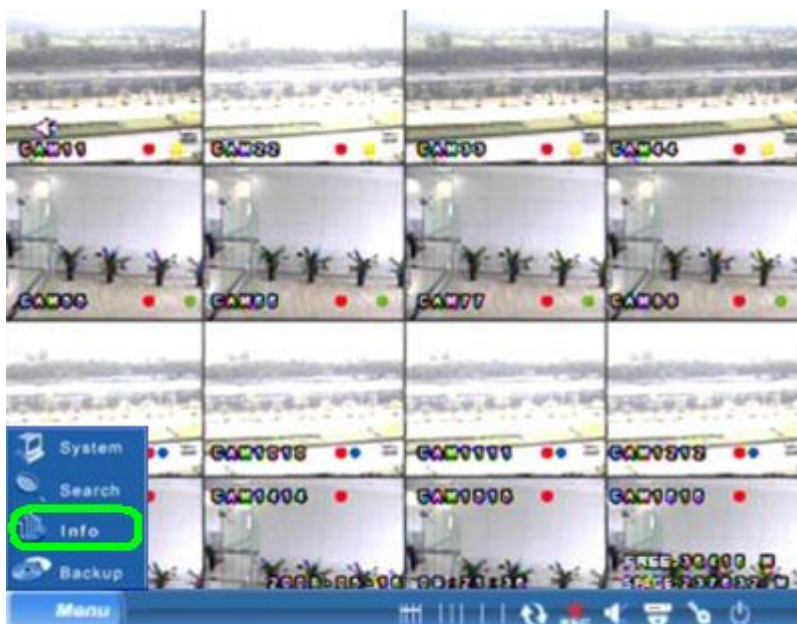
MODEL NUMBERS:

QSD2316L, QSTD2408, QSTD2416, QSDT8DP

STEP 1: On the channel display screen, right click and a small control bar will appear at the bottom of the screen.



STEP 2: Move the cursor to "Info" and click.



HOW TO UPDATE THE FIRMWARE FOR DVR SYSTEMS

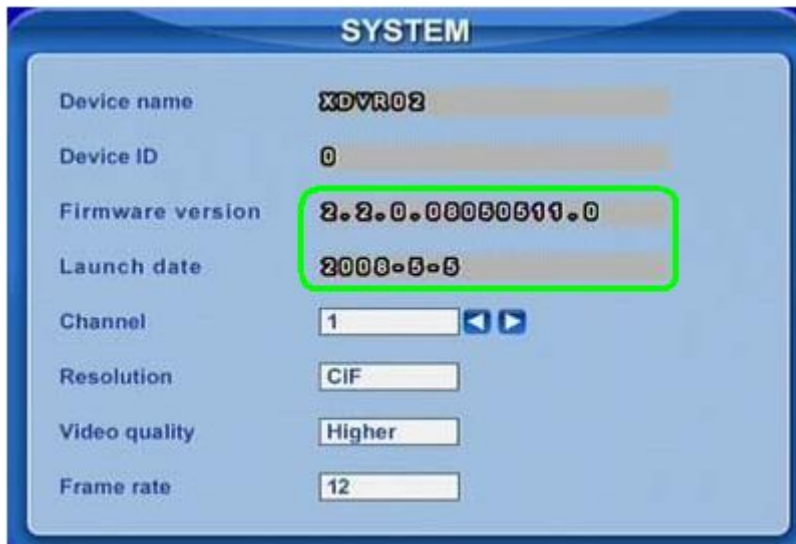
MODEL NUMBERS:

QSD2316L, QSTD2408, QSTD2416, QSDT8DP

STEP 3: Move the cursor to "System" and click.



STEP 4: Write down the Firmware version and Launch date on a piece of paper.

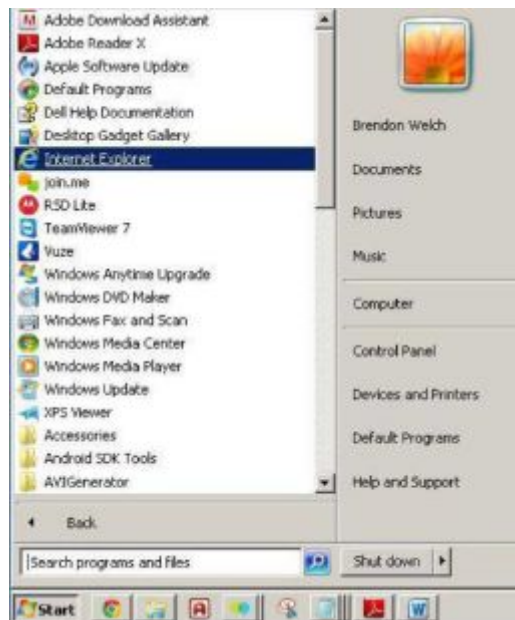


HOW TO UPDATE THE FIRMWARE FOR Q-See DVR SYSTEMS

MODEL NUMBERS:

QSD2316L, QSTD2408, QSTD2416, QSDT8DP

STEP 5: Go to your PC and open Internet Explorer (NOT Internet Explorer 64bit).



STEP 6: Go to <http://qsee.custhelp.com/> and in the search box, type your model number and click "Search".

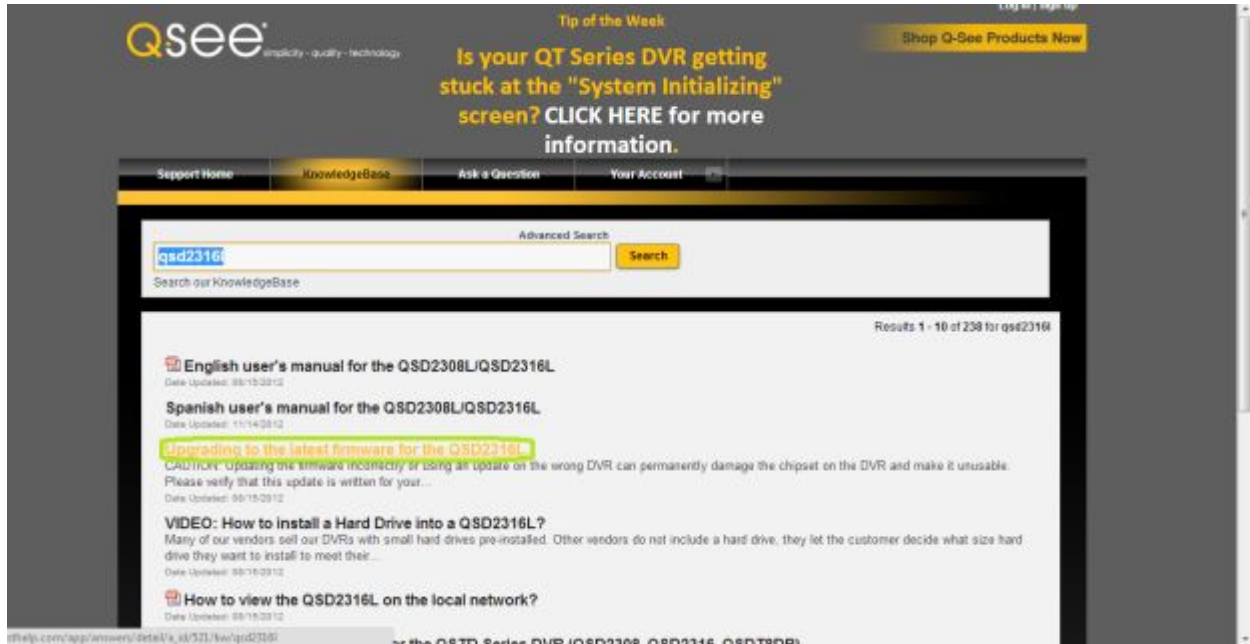


HOW TO UPDATE THE FIRMWARE FOR Q-See DVR SYSTEMS

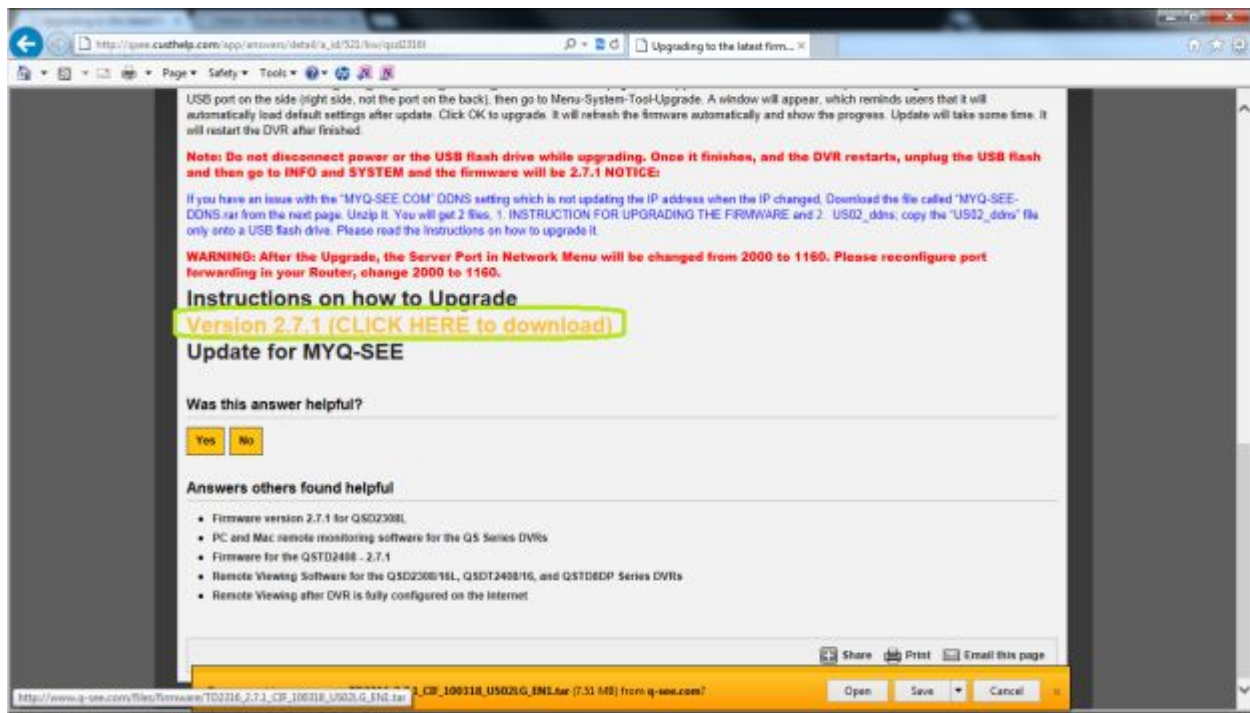
MODEL NUMBERS:

QSD2316L, QSTD2408, QSTD2416, QSDT8DP

STEP 7: Find the latest firmware for your DVR (Note: The answer that has the latest firmware for your DVR will contain the words "latest firmware" in the title).



STEP 8: Click on the Firmware link to start downloading the firmware.

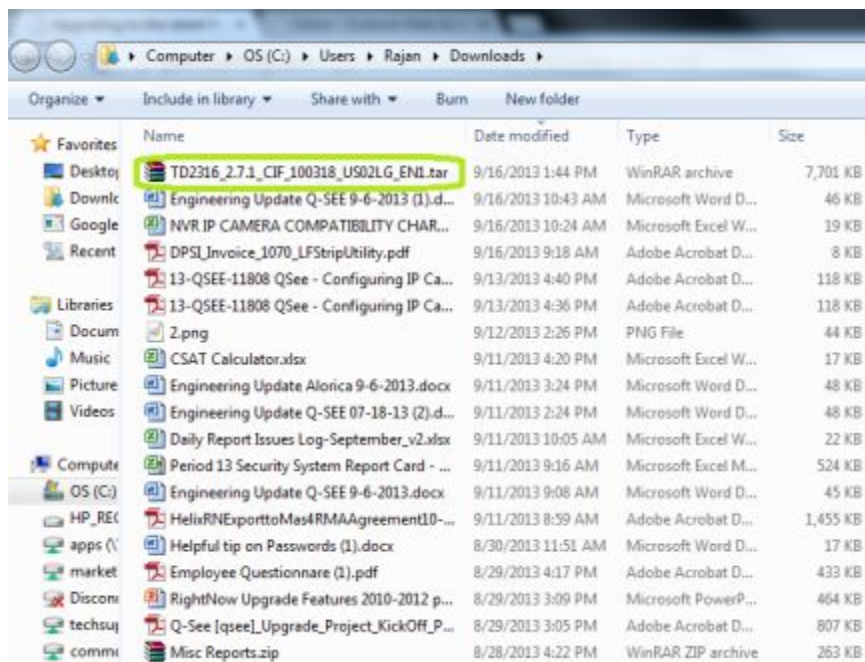


HOW TO UPDATE THE FIRMWARE FOR Q-See DVR SYSTEMS

MODEL NUMBERS:

QSD2316L, QSTD2408, QSTD2416, QSDT8DP

STEP 9: Click on "Save"; the downloaded firmware file will be in your "Downloads" folder.

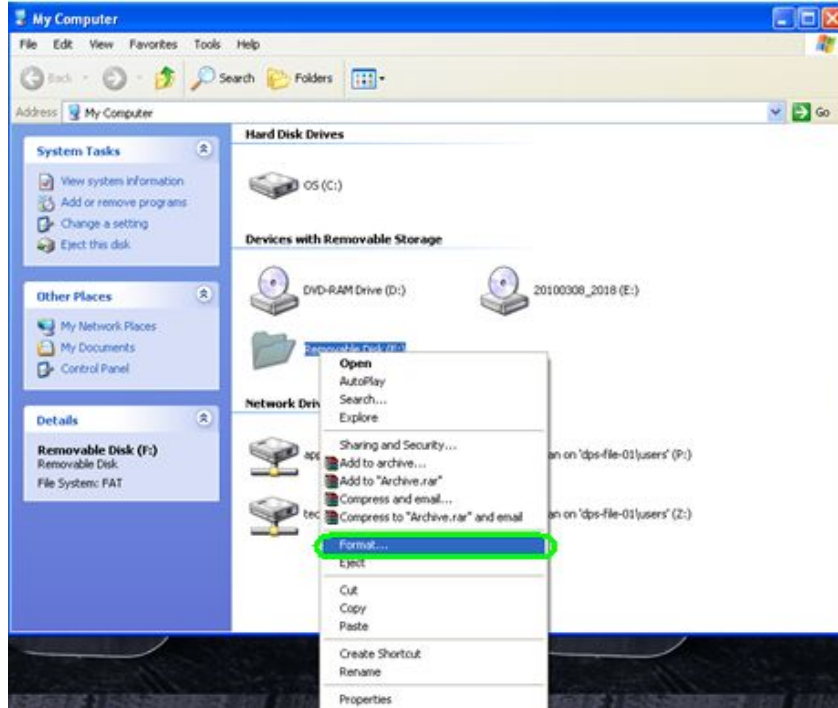


HOW TO UPDATE THE FIRMWARE FOR Q-See DVR SYSTEMS

MODEL NUMBERS:

QSD2316L, QSTD2408, QSTD2416, QSDT8DP

STEP 10: Connect a USB flashdrive into your desktop. Right click the folder/driver that it is associated with the flashdrive, and click "Format".



STEP 11: Set the file system to "FAT" and click "Start".



HOW TO UPDATE THE FIRMWARE FOR Q-See DVR SYSTEMS

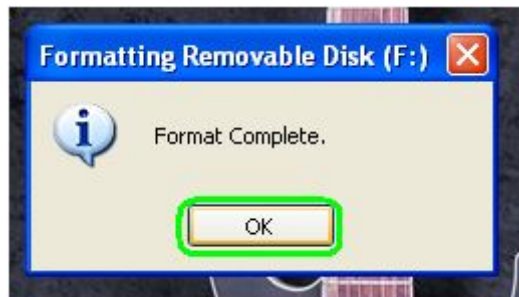
MODEL NUMBERS:

QSD2316L, QSTD2408, QSTD2416, QSDT8DP

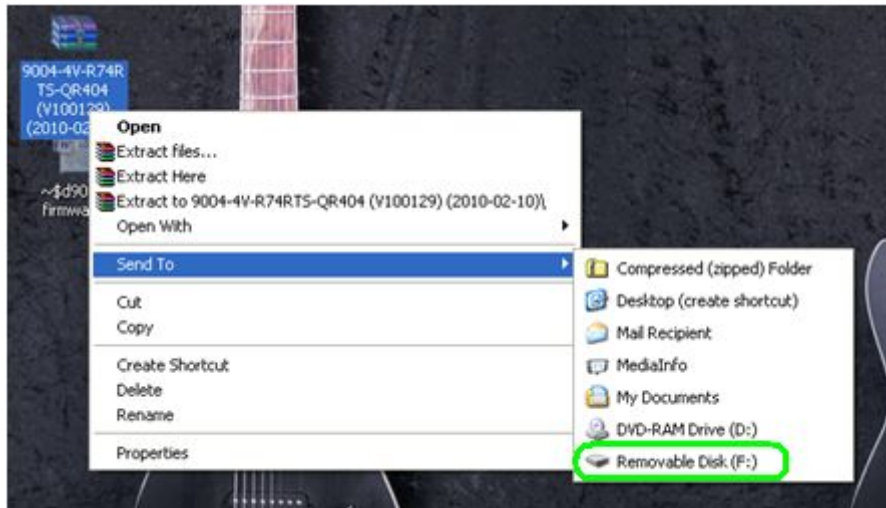
STEP 12: Click "OK".



STEP 13: Click "OK".



STEP 14: Send the archived firmware that you downloaded to the USB drive.

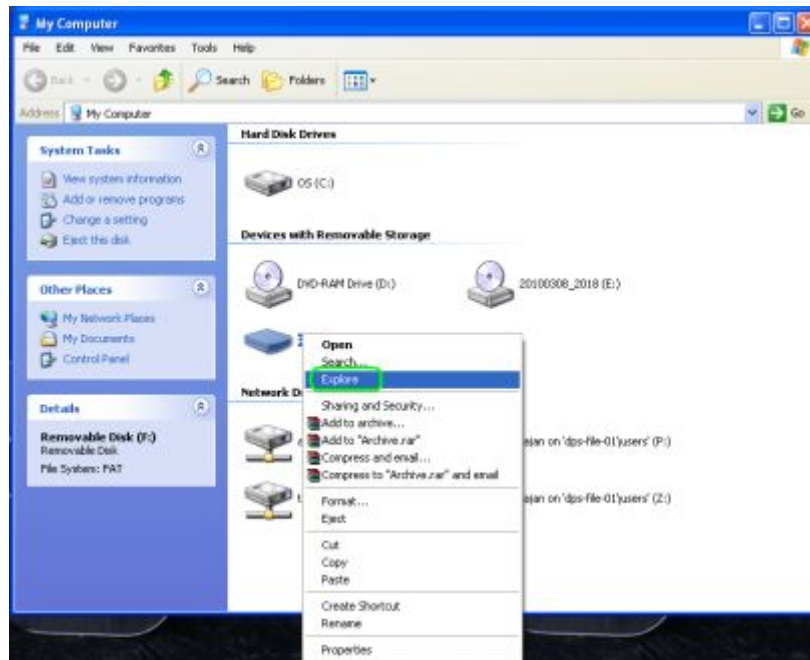


HOW TO UPDATE THE FIRMWARE FOR Q-See[®] DVR SYSTEMS

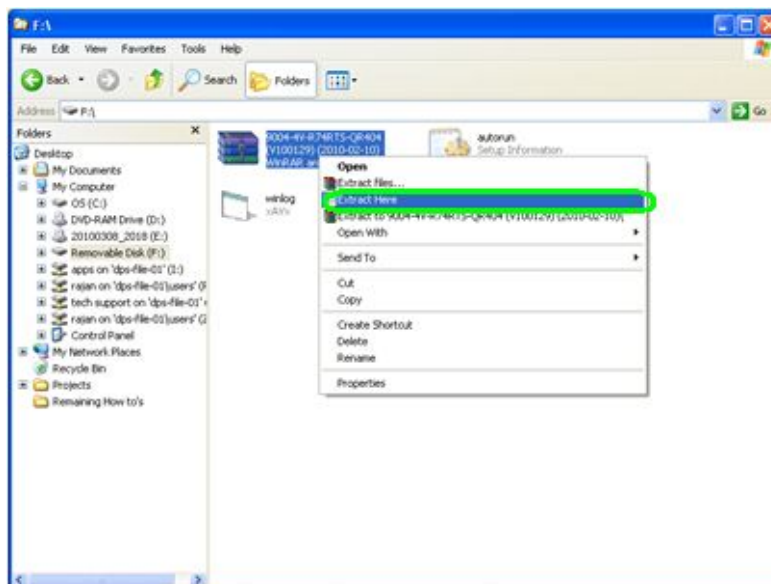
MODEL NUMBERS:

QSD2316L, QSTD2408, QSTD2416, QSDT8DP

STEP 15: Open the folder/drive associated with your flashdrive.



STEP 16: Right click the archived firmware and click "Extract Here". Remove the flashdrive from your computer. (NOTE: You may need to install WinRAR before extracting the archive; see the "Installing WinRAR" guide if you do not have it installed on your computer)

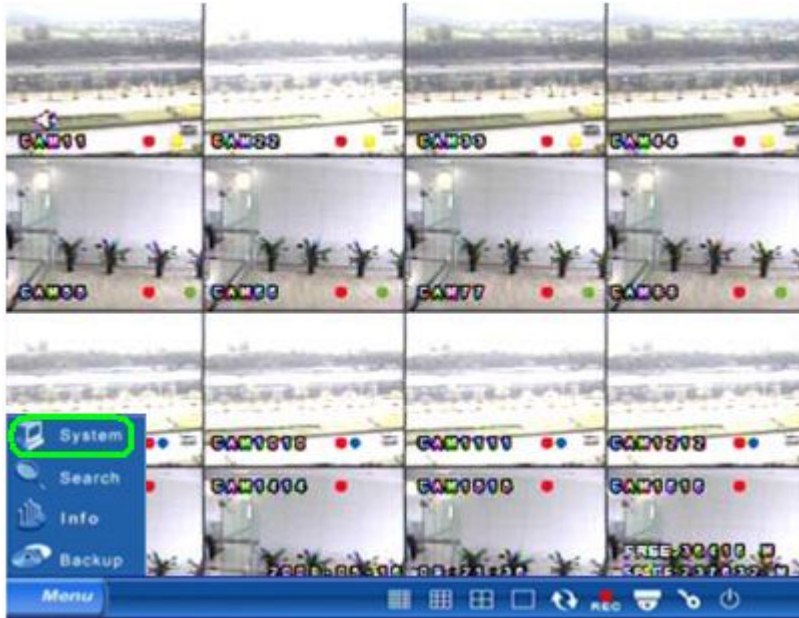


HOW TO UPDATE THE FIRMWARE FOR Q-See® DVR SYSTEMS

MODEL NUMBERS:

QSD2316L, QSTD2408, QSTD2416, QSDT8DP

STEP 17: Input the flashdrive into your DVR. On the channel display screen, right click for the control bar to appear; click on the "Menu" button and click on "System".



STEP 18: Move the cursor to "Tools" and click.



HOW TO UPDATE THE FIRMWARE FOR DVR SYSTEMS

MODEL NUMBERS:

QSD2316L, QSTD2408, QSTD2416, QSDT8DP

STEP 19: Move the cursor to "Upgrade" and click.



STEP 20: Move the cursor to "OK" and click.



HOW TO UPDATE THE FIRMWARE FOR Q-See DVR SYSTEMS

MODEL NUMBERS:

QSD2316L, QSTD2408, QSTD2416, QSDT8DP

STEP 21: A progress bar will appear showing how much progress has been made.



STEP 22: Once the update has been made, the screen will display "Update Success!".



HOW TO UPDATE THE FIRMWARE FOR DVR SYSTEMS

MODEL NUMBERS:

QSD2316L, QSTD2408, QSTD2416, QSDT8DP

STEP 23: The DVR will reboot automatically.

