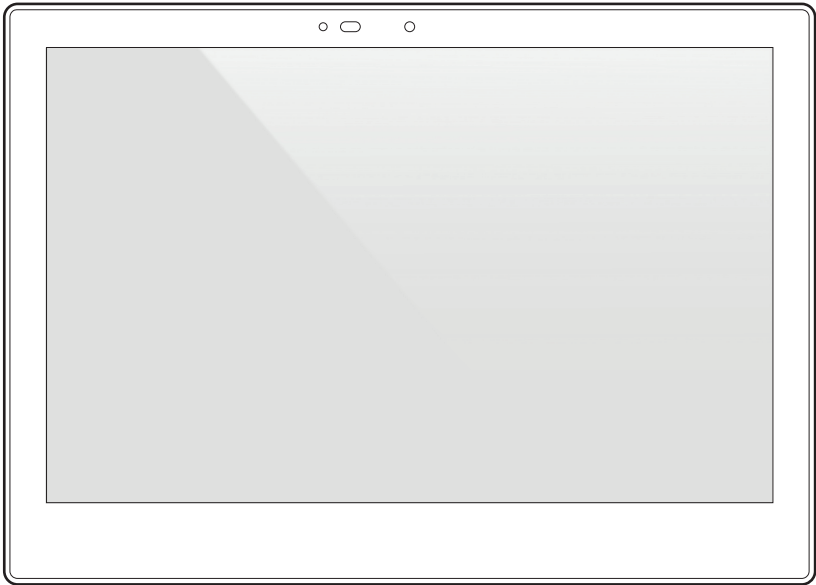


Quick Start Guide

This quick guide will help you go through installation quickly

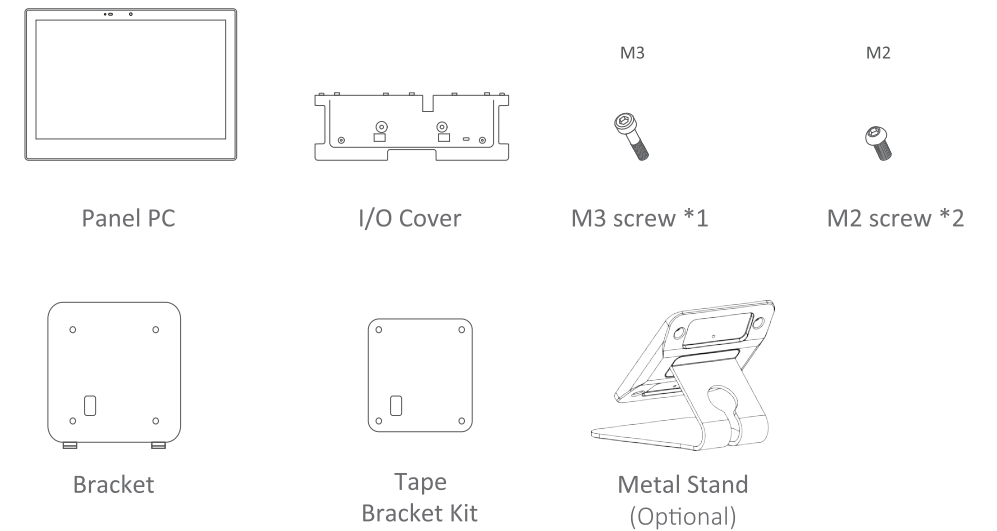


HC-1570-PW

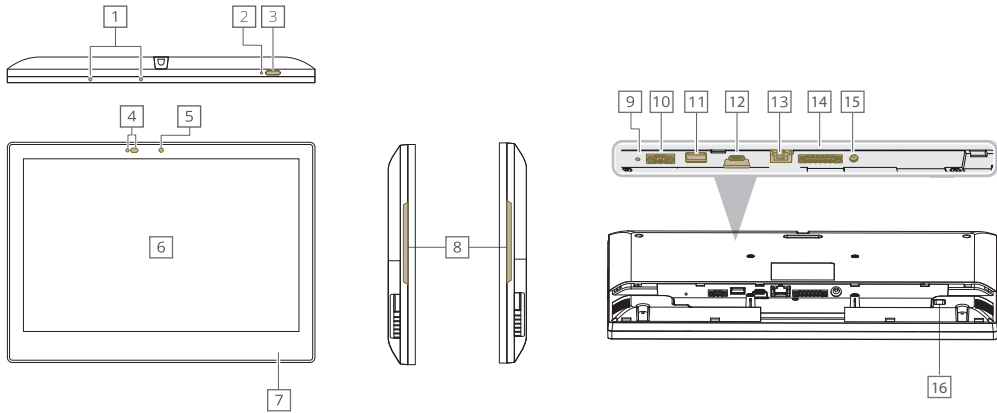
Touch Panel PC



Contents



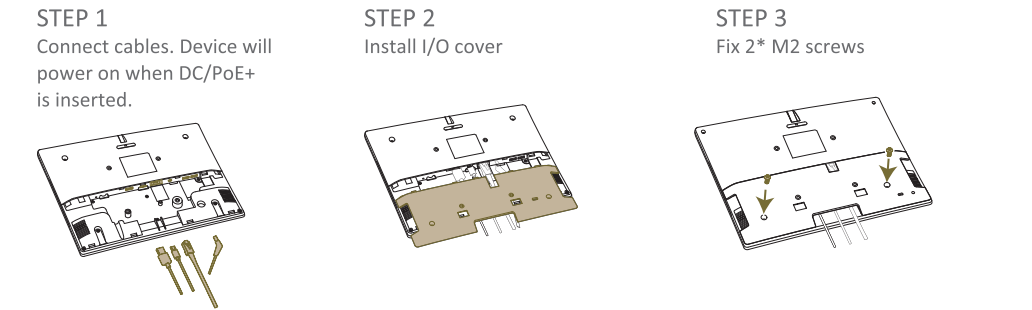
Indication



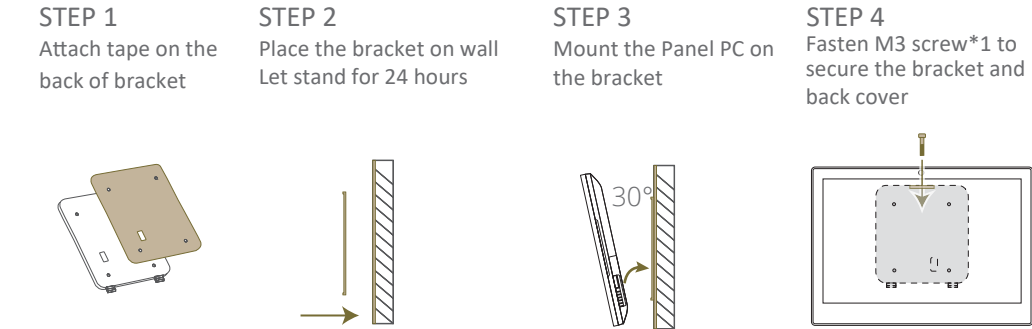
- | | | | |
|--------------------|------------|-----------------------|----------------------------|
| 1 MIC | 5 Camera | 9 Reset hole | 13 RJ45 / PoE+ |
| 2 Reset | 6 Display | 10 KNX | 14 RS485/ CAM |
| 3 Power Button | 7 NFC | 11 USB 3.0 | 15 DC IN |
| 4 Proximity Sensor | 8 Side LED | 12 USB Type C for ADB | 16 12 Kensington Lock Slot |

Installation

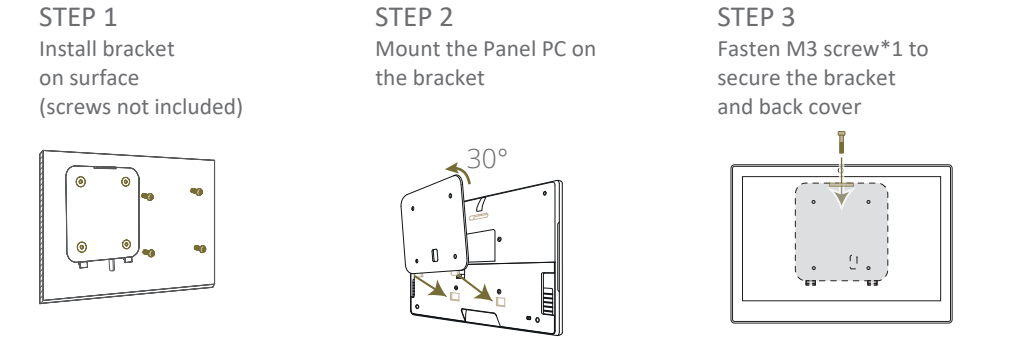
1. Cable connection



Tape Mount



Surface Mount



- NOTICE:
- ⦿ This Panel PC is also compatible with VESA mounting (100mm x 100mm). It is recommended to secure with M3 screw. The suggested length of the M3 screw is the thickness of VESA mounting bracket plus 8mm(Screw not included).
 - ⦿ Please ensure the mounting surface is clean and smooth before using the tape.
 - ⦿ M2 / M3 screw Torque<2 kgf-cm
 - ⦿ Installation height: <2M

