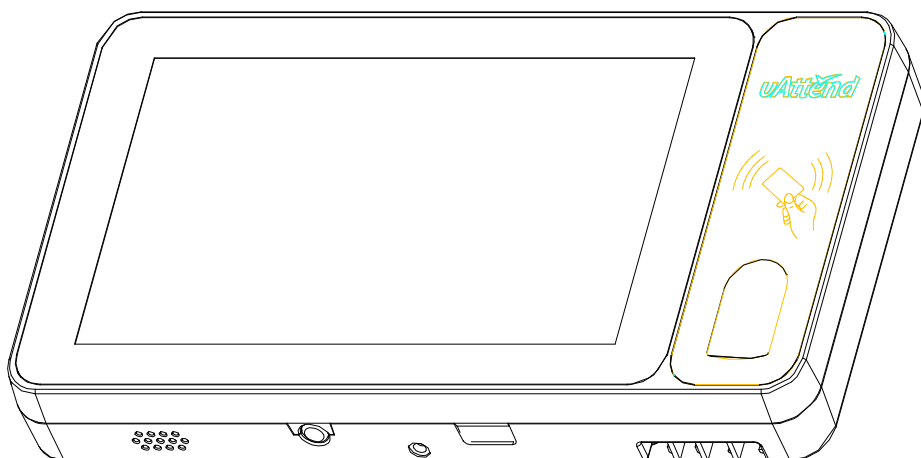


# ***OB1000***

## ***User Manual***



**QINGDAO WINTEC SYSTEM CO., LTD**

**Thank you for purchasing our multi-functional OB1000 terminal. This manual will help you to know the functions and operations of the OB1000.**

### **About the Product**

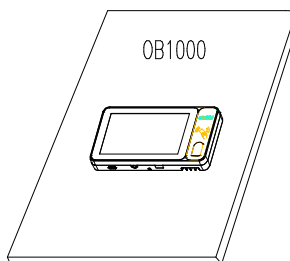
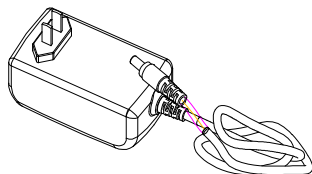
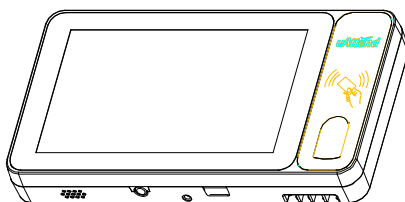
---

OB1000 is a set of fingerprint and radio frequency card identification in one touch intelligent attendance terminal. Based on ARM platform, it runs android OS. It is an ideal choice for retail, hospitality and entertainment business etc.

### **Packaging List**

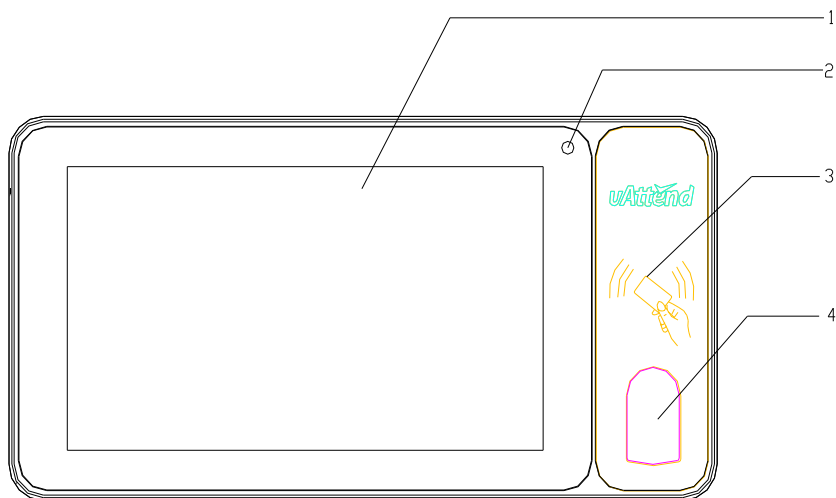
---

After unpacking the carton, please check that the following items are included: POS、Adapter、User Manual. If any item is missing or appears damaged, please contact your dealer immediately.



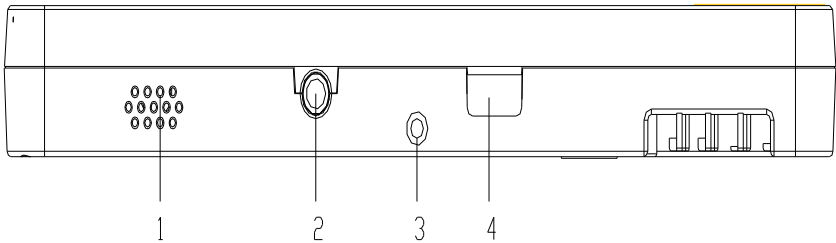
## Outward Diagram

### Front View



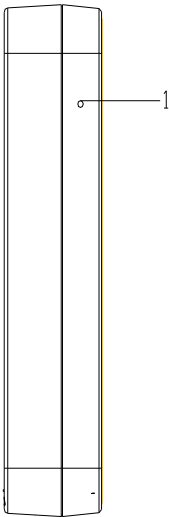
DESCRIPTION	
1	TFT LCD, Touch screen
2	Front Camera
3	RFID
4	Fingerprint Module

Back View

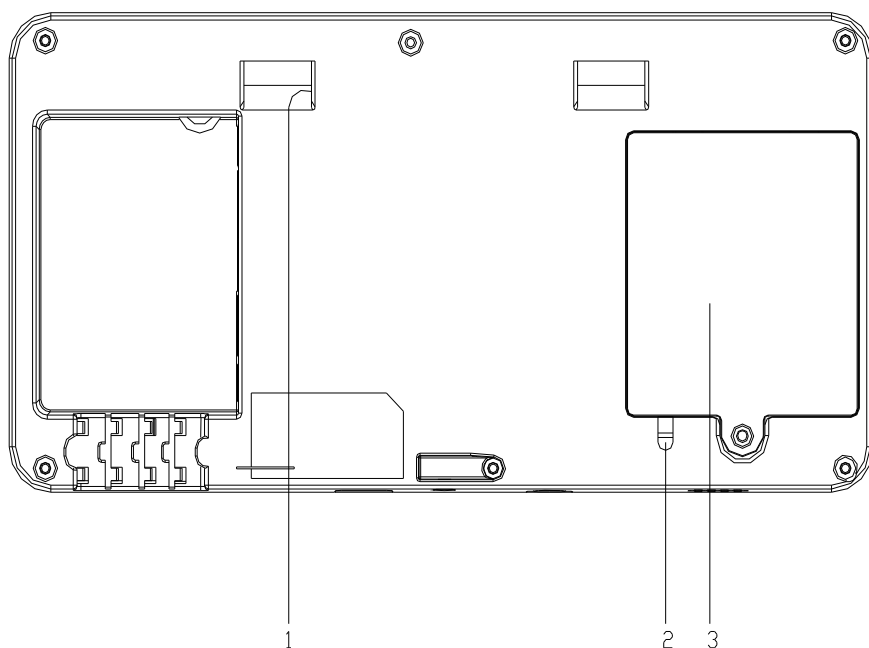


DESCRIPTION	
1	Audio
2	Host Power Button
3	Bracket screw hole
4	USB

Side View



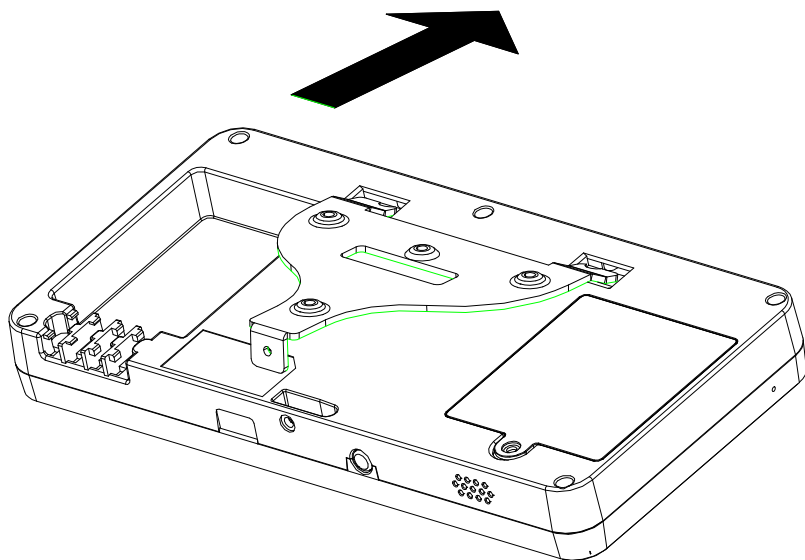
DESCRIPTION	
1	MIC

**Bottom View**

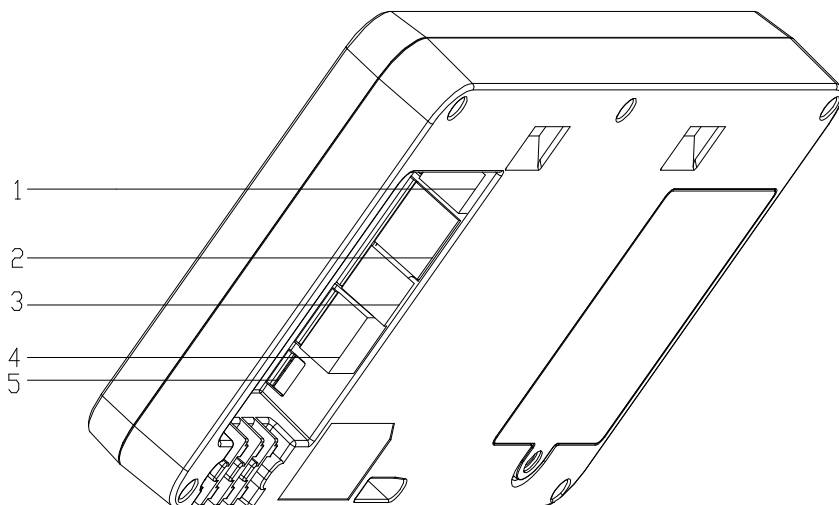
DESCRIPTION	
1	Bracket mounting position
2	Battery shield
3	Battery Cover

**Mount bracket**

Follow the direction of the icon, install the bracket and lock the screw.



## IO Ports



DESCRIPTION	
1	DC adapter
2	RJ-45 LAN port
3	RJ-11 I/O port
4	USB port
5	USB OTG port

### **Booting/Shutdown Operation/Charge**

- 1、**Booting:** Press the host switch button to start the machine。
- 2、**Shutdown :**To shut down the machine, press the power switch for a while till the shutting down interface appears, then confirm to shut it down or not.
- 3、**Charge:**When you need to charge the insertion of the machine comes with the adapter to charge.

**NOTE:** When first booting, take out the battery insulating strip .



**NOTE:** Please don't dismantle the machine without related guide. Please consult your supplier or service provider first if problem can't be solved.

**Related technical materials can be download from <http://www.wintec.cn>.**

## **FCC Statement**

This equipment has been tested and found to comply with the limits for a Class B digital device, pursuant to Part 15 of the FCC Rules. These limits are designed to provide reasonable protection against harmful interference in a residential installation. This equipment generates uses and can radiate radio frequency energy and, if not installed and used in accordance with the instructions, may cause harmful interference to radio communications. However, there is no guarantee that interference will not occur in a particular installation. If this equipment does cause harmful interference to radio or television reception, which can be determined by turning the equipment off and on, the user is encouraged to try to correct the interference by one or more of the following measures:

- Reorient or relocate the receiving antenna.
- Increase the separation between the equipment and receiver.
- Connect the equipment into an outlet on a circuit different from that to which the receiver is connected.
- Consult the dealer or an experienced radio/TV technician for help.

This device complies with part 15 of the FCC Rules. Operation is subject to the following two conditions:(1) This device may not cause harmful interference, and (2) this device must accept any interference received, including interference that may cause undesired operation.

Changes or modifications not expressly approved by the party responsible for compliance could void the user's authority to operate the equipment.

This equipment complies with FCC radiation exposure limits set forth for an uncontrolled environment. This equipment should be installed and operated with minimum distance 20cm between the radiator & your body.