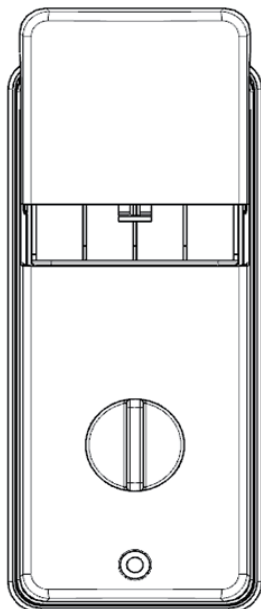
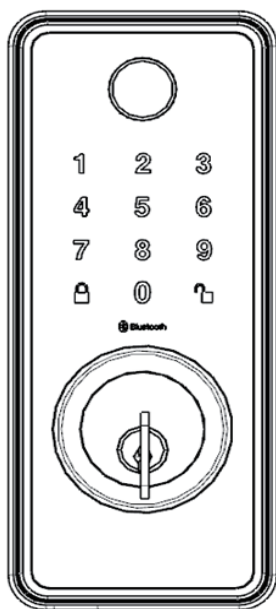




## Installation & Operation Guide

### Touchscreen Door Lock







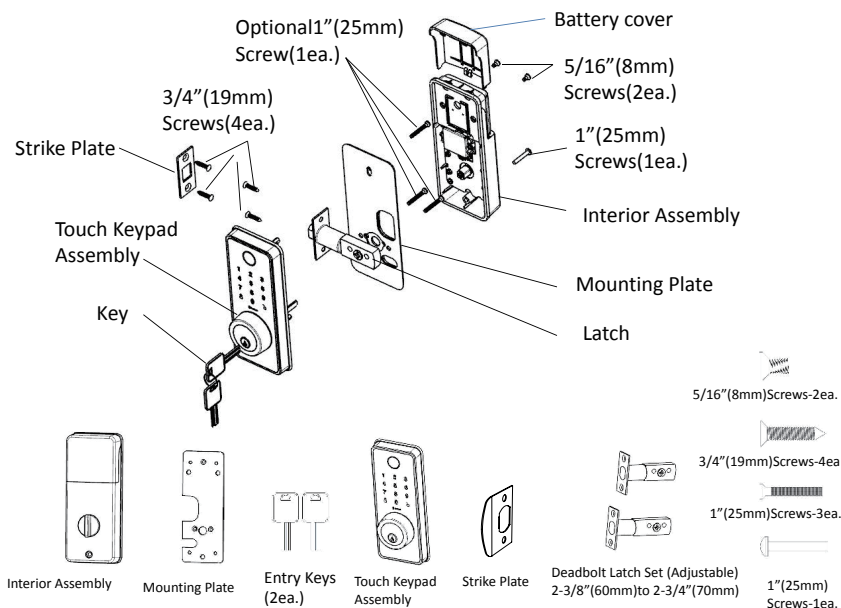
## INSTALLATION INSTRUCTIONS

Package Contents / Tools Required .....	Page 1
Prepare Door and Jamb .....	Page 2
Adjusting Deadbolt Latch Set .....	Page 3
Installing Deadbolt Latch Set .....	Page 4
Installing Interior Assembly .....	Page 5
Installing Exterior Assembly .....	Page 6
Installing Interior Assembly (Cont.).....	Page 7-8

## OPERATION INSTRUCTIONS

Exterior Assembly Overview .....	Page 9
Locking / Unlocking / Password Programming .....	Page 10
Fingerprint Management .....	Page 11
Card / Password Management / Automatic Lock Setting .....	Page 12
Bluetooth setting / Voice Prompt / Restor Factory Setting .....	Page 13
Template .....	Page 14

# INSTALLATION INSTRUCTIONS



## Tools Required

Tools Required for Installation  
on Pre-drilled Doors:

- Phillips Screwdriver

Tools Required for Installation  
on Doors That Require Drilling:

- Drill
- Tape Measure
- Pencil
- 2-1/8" (54mm) Drill Hole Saw
- 1" (25mm) Drill
- 1/16" (2mm) Drill
- Chisel
- Hammer
- Phillips Screwdriver

## PREPARE DOOR AND JAMB

NOTE: For installation on doors with pre-drilled holes skip to page 4.

### 1. TEMPLATE

- Cut out template printed on page 14 of this Manual (Figure 1a).
- Fold template and place on door 36" (915mm) from the ground as marked (Figure 1b).

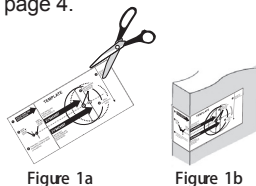


Figure 1a

Figure 1b

### 2. MARK THE DOOR FOR DRILLING

- Mark center hole on door edge through guide on template for 1" (25mm) latch bolt (Figure 2a).
- Mark center hole on door face through guide on template for 2-3/8" (60mm) or 2-3/4" (70mm) (Figure 2b). backset

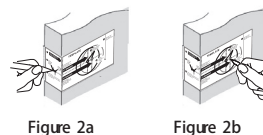


Figure 2a

Figure 2b

### 3. DRILL AND CHISEL DOOR

- Drill 2-1/8" (54mm) hole through door face as marked for lock set (Figure 3a).
- Drill 1" (25mm) hole in center of door edge for Deadbolt Latch Assembly (Figure 3b).
- Insert Deadbolt Latch Assembly in hole keeping it parallel to face of door. Mark outline and remove latch (Figure 3c).
- Chisel 1/8" (3mm) deep or until latch face is flush with door edge (Figure 3d).

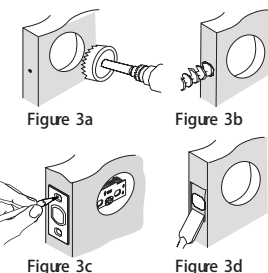


Figure 3a

Figure 3b

Figure 3c

Figure 3d



**NOTE:** For Drive in Latch, drill hole size indicated on template and press until it is flush with door edge.

### 4. MARK AND DRILL DOOR JAMB

- Mark center hole on edge of jamb even with the center of the Latch Bolt on door edge. (Figure 4a).
- Drill 1" (25mm) hole 1-3/16" (30mm) deep in door jamb on center mark (Figure 4b).
- Outline outside edges of Strike Plate (Figure 4c).
- Chisel 1/8" (3mm) deep for Strike Plate or until flush (Figure 4d).
- Install Strike Plate using two 3/4" (19mm) screws provided (Figure 4e).

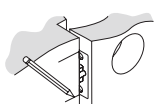


Figure 4a

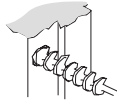


Figure 4b

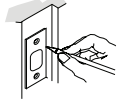


Figure 4c

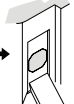


Figure 4d

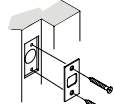


Figure 4e

## ADJUSTABLE DEADBOLT LATCH SET

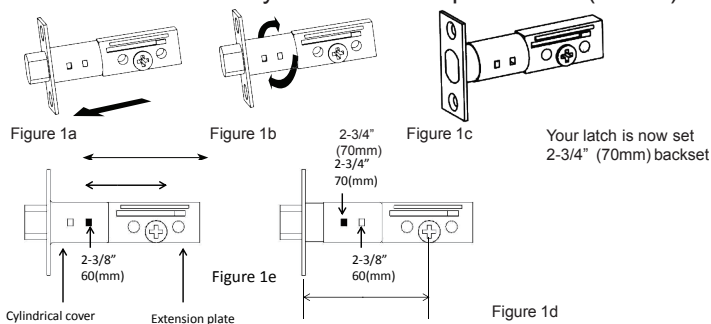
**NOTE:** Deadbolt Latch Set is shipped with the backset set at 2-3/8" (60mm)  
Measure the backset (backset is distance between edge of the door and the center of Lock).

### 1. TO CONVERT FROM 2-3/8" (60mm) BACKSET TO 2-3/4" (70mm) BACKSET

- Hold latch with numbers facing forward and thumb pressing on the bolt (Figure 1a).
- Rotate the cylinder cover clockwise (Figure 1b).
- Pull and twist the extension plate all the way out (Figure 1c).
- Rotate the cylinder cover counter clockwise so that the marking aligns with the 2-3/4" (70mm) position indicator (Figure 1d).

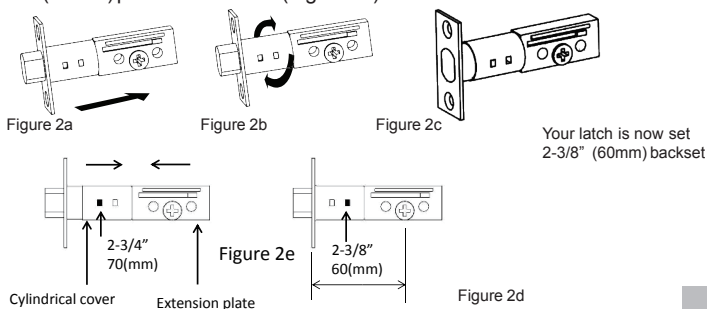


**NOTE:** Do not extend Cylindrical Cover past 2-3/4" (70mm)



### 2. TO CONVERT FROM 2-3/4" (70mm) BACKSET TO 2-3/8" (60mm) BACKSET

- Hold latch with numbers facing forward and thumb pressing on the bolt (Figure 2a).
- Rotate the cylinder cover clockwise (Figure 2b).
- Push and twist the extension plate all the way in (Figure 2c).
- Rotate the cylinder cover counter clockwise so that the marking aligns with the 2-3/8" (60mm) position indicator (Figure 2d).



## INSTALLING DEADBOLT LATCH SET

### 3. INSTALLING THE DEADBOLT LATCH SET (need phillips head screwdriver)

- Insert Deadbolt Latch Set into door edge hole with the word "UP" and the arrow on the extension plate facing UP. Cross shaped spindle connector will be at the bottom of the Deadbolt Latch Set (Figure 3a).
- Make sure the face plate sits flush with the door. Do not force the latch into the mortise flush. Chisel out excess material if necessary for a flush fit.
- Using two 3/4" (19mm) screws provided, screw the latch into the door with a hand held screwdriver. **DO NOT OVERTIGHTEN.**

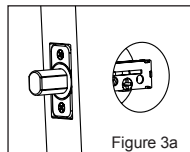
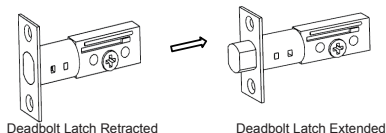


Figure 3a



**NOTE:** Deadbolt Latch must be extended when installing



Deadbolt Latch Retracted

Deadbolt Latch Extended

### 4. IDENTIFYING YOUR DOOR HANDING

Stand outside the door.

- If the hinges are on the left your door is Left Handed (Figure 4a).
- If the hinges are on the right your door is Right Handed (Figure 4b).

#### OUT SWING DOOR

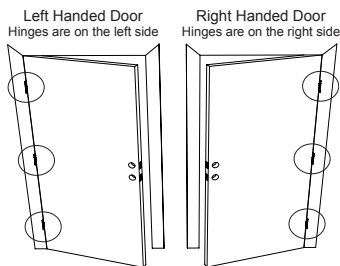


Figure 4a

#### IN SWING DOOR

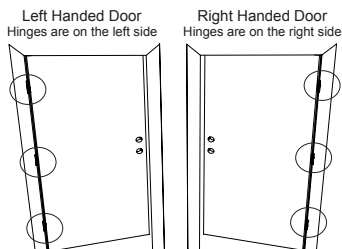


Figure 4b



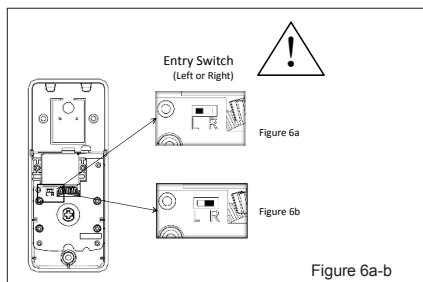
**NOTE:** You are standing outside the door

## 5. UNPACK THE INTERIOR ASSEMBLY

- Remove the battery cover by sliding the cover upward.
- Locate the screws holding the Mounting Plate to the Interior Assembly. Remove the screws to release the Mounting Plate from the Interior Assembly.

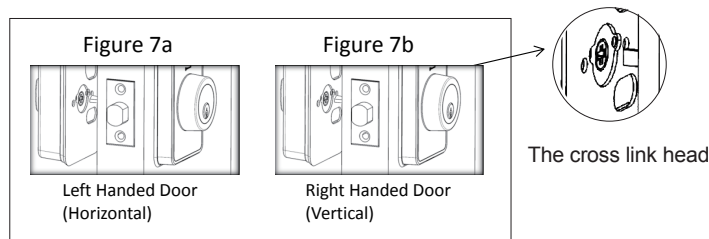
## 6. SET THE ENTRY SWITCH FOR LEFT OR RIGHT HANDED DOOR

- Gently move the switch to "L" for Left Handed Door (Figure 6a).
- Gently move the Switch to "R" for Right Handed Door (Figure 6b).

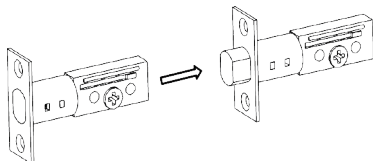


## 7. SET THE INTERIOR KNOB POSITION FOR LEFT OR RIGHT HAND HINGED DOORS

- Turn the cross link head marked red color to down side for Left Handed Doors.(Figure 7a).
- Turn the cross link head marked red color to right side for Right Handed Doors. (Figure 7b).



**NOTE:** Make sure deadbolt Latch is full extended





## 8. INSTALLING THE EXTERIOR ASSEMBLY

Work with the Door Open for easy access.

- Unpack the Exterior Assembly. Use care to not scratch the green circuit board during handling and installation.
- Check that the Rubber Gasket is properly seated on the Exterior Assembly (Figure 8a-b).
- Insert the Exterior Assembly onto the door with the tailpiece going through the Deadbolt Latch Set cross shaped spindle connector in the VERTICAL POSITION. Route the Control Wire through the door under the Deadbolt Latch Set (Figure 8c).

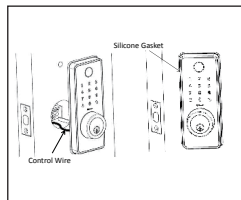


Figure 8a-b

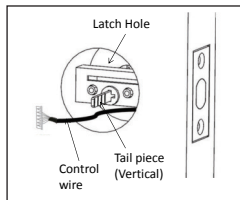


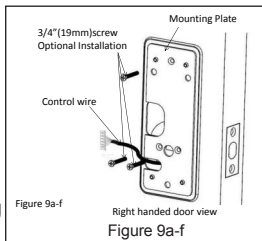
Figure 8c



**NOTE:** Tailpiece must be positioned vertically

## 9. SECURING THE EXTERIOR ASSEMBLY TO THE DOOR

- From the side marked "This side against door", route the Control Wire through the rectangular slot in the Mounting Plate (Figure 9a).
- Place Mounting Plate against door with tailpiece passing through the center hole in the three hole set (Figure 9b).
- Secure the Mounting Plate to the Exterior Assembly using two 1-1/8" (28mm) Screws (Figure 9c).
- Hand tighten with a Phillips Screwdriver leaving loosely connected (Figure 9d).
- Check that the Rubber Gasket is properly aligned and correct as necessary (Figure 9e).
- Check vertical alignment of the lock (Figure 9f).
- Tighten securely with a hand held Phillips Screwdriver. **DO NOT OVER TIGHTEN**

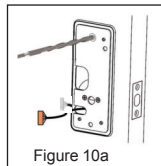


## 10. OPTIONAL INSTALLATION

- Using a 1/16" (2mm) drill bit, drill a pilot hole in your door using the Mounting Plate upper hole as a guide (Figure 10a).
- Insert one 3/4" (19mm) screw and tighten.

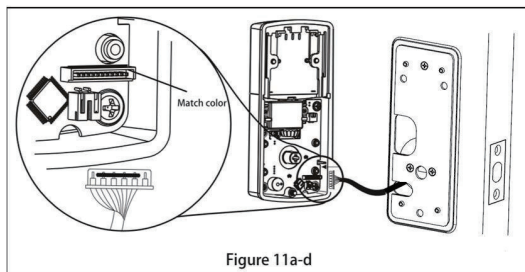


**NOTE:** Lock and unlock using the key to see if the Deadbolt Latch is opening and closing easily.



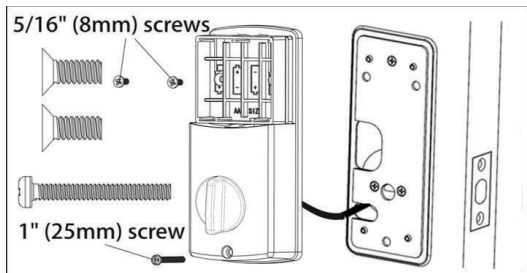
## 11. ATTACH THE CONTROL WIRE TO THE INTERIOR ASSEMBLY

- Use care to attach the Control Wire male plug to the Interior Assembly female socket connector (Figure 11a).
- Do not force the Control Wire male plug into the Interior Assembly female socket connector (Figure 11b).
- The Control Wire male plug has two alignment tabs on the smooth side of the plug which is the top of the plug (Figure 11c).
- The Control Wire male plug is inserted with the smooth side up into the Interior Assembly female socket connector (Figure 11d).



## 12. ATTACH THE INTERIOR ASSEMBLY TO DOOR

- Position the Interior Assembly over the tailpiece and push the Interior Assembly against the door (Figure 12a).
- Using two 5/16" (8mm) screws and one 1-3/8" (35mm) screw, attach the Interior Assembly to the Mounting Plate. **DO NOT OVER TIGHTEN SCREWS** (Figure 12b).



**NOTE:** Lock and unlock using Interior Knob to see if the latch is opening and closing easily.

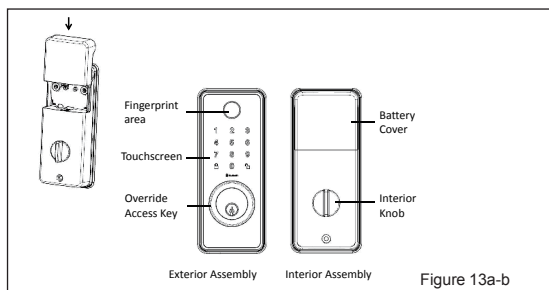
## 13. Installing Batteries

- a. Insert 4 AA high quality Alkaline batteries into the Battery Compartment in the direction noted +/- on the Compartment. The Lock will beep 2 times, the keypad will illuminate blue, and the Clevr button will flash green twice to signify that it has received power (Figure 13a).





**NOTE:** Do not touch the Keypad until the blue light turns off. Do not use rechargeable batteries or non-alkaline batteries.

- b. Slide the Battery Cover down into the track on the Interior Assembly to cover the batteries (Figure 13b).

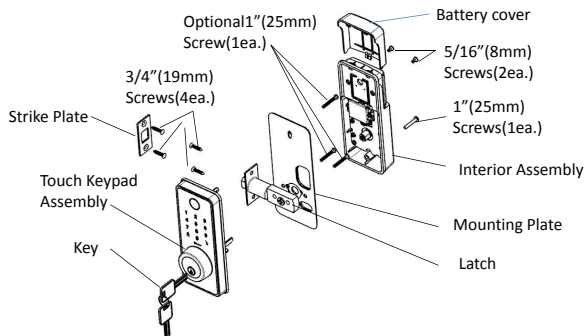


## 14. Testing Lock

With the Door Open

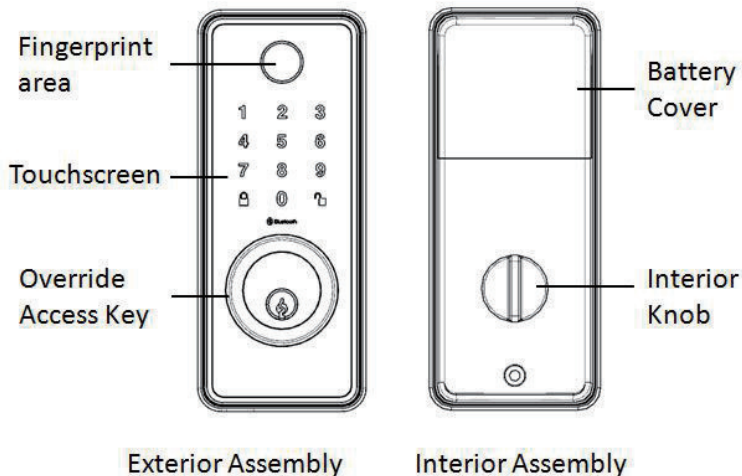
- a. Test the Lock using the Interior Knob. The bolt should move smoothly.
- b. Test the lock using the Keypad. To lock press  and then press " 123456 "  to unlock.

## INSTALLATION OVERVIEW





### OPERATION INSTRUCTIONS



Item	Capacity	Permissions
Administrator password	1	Add / Delete/ Clear User password/ Finger register/ Reset administrator password.
Password	50	Unlock
Fingerprint	99	Unlock
Bluetooth	50	Unlock; Send E-key; Check records
Card	50	Unlock


### TO UNLOCK THE LOCK

- Using Keypad: Enter a valid password (Default password is :123456) and press key.



- Using valid Finger user
- Using valid Card (This function is not available for the US market.)
- Using APP

## TO LOCK THE LOCK

2.1 Using Keypad: Enter press  key.

2.2 Setting Automatic Lock ( 1-30 second) Default 10 second

## 1. Programming mode

### CHANGE CURRENT OR RE-SET ADMINISTRATOR PASSWORD

Factory default Programming Code = 123456

In programming mode, there is a voice prompt:

"Password management please press 1 ",


"Fingerprint management please press 2",

"IC card management please press 3",

"Change the administrator password please press 4",

"Set the automatic lock time please press 5",

"Turn on or off Bluetooth please press 6"

Return press  key


### 2.1. Password programming

Press 1 to get into programming mode.

Voice navigation "Add password please press1",

"Delete password please press2",

"Clear the password please press 3",




"Return please press  key"

#### 2.1.1) Add password

Press 1 to add password.

Voice navigation "Please enter the user number,"





Enter user ID number (2 digits ), press the  key, the input 4-8 digits for a new password, press  key. Input again the same numbers and press  key, Voice prompt "Add success".

## 2.1.2) Delete password


Press 2 to delete password.

Voice navigation "Please enter the user number to be deleted ",

Enter user ID number press  key, Enter the user ID number again and press the  key, the voice prompt "Delete success".

## 2.1.3) Clear password

Press 3 to clears the password.

Voice navigation "Please enter administrator password", input the correct administrator password and press the  key,

Voice prompt "password cleared".


## 2.2. Fingerprint management

Press 2 to get into fingerprint management.

Voice navigation "Add fingerprint please press 1",

"Delete fingerprint please press 2",

"Clear fingerprint please press 3",

"Return please press the  key".

### 2.2.1) Add fingerprint

Press 1 to add fingerprint, Enter user ID number (1-150 ).


Voice navigation "Please press your finger ", (Finger should be flat on the sensor), follow the voice navigation press the finger 4 times.

"Add success".

### 2.2.2) Delete fingerprint

Press 2 to delete the fingerprint.

Voice navigation "Enter User number you want to delete ".


"Enter User number you want to delete again". Every time after user number press  key

"User finger deleted".



## 2.2.3) Clear fingerprint

Press 3 to empty the fingerprint.

Voice navigation "Enter administrator password press the  key". Voice navigation "the fingerprint has been cleared"

## 2.3.Card management

Press 3 to set user card ( This function is not available for the US market.)


Add user card press 1,

Delete user card press 2,

Clear user card press 3,

Return press  key.


### 2.3.1) Press 1 to add user card

Voice navigation "Enter user number", enter card ID number ( 1-150 ) and press  key.


"Please put IC card",


"Add user card success" or if failed "Add card again."

### 2.3.2) Press 2 to delete user card


Voice navigation "Enter user number want to delete" then press  key,


"Enter user number want to delete again" then press  key,

"User card deleted success", continue delete press  key,

"Return press  key".

### 2.3.3) Press 3 to clear user card



Voice navigation "Please Enter the administrator password", press  key

"IC cards cleared, return press  key".

## 2.4. Modify the management password

Press 4 to get into changes the management password.


Voice navigation "Please enter the new management password",

Enter 4-8 digits for a new management password, press the  key and enter the same number again, press  key, voice prompt "Password changed".

## 2.5. Set the automatic lock time

Factory default is 10 Second, set the range 3-30 Second.



Press 0 turn on or off the automatic  function.


Press 5 to set automatic  time.

The input digital " 3-30 " will be the automatic lock time


## 2.6. Turn on or off Bluetooth

Follow the voice navigation, press 6 to turn on or off Bluetooth.

## 3. Turn on or off voice prompt

Touching to light up the password tray, press three times  key to turn on or off voice prompt.

## 4. Restore factory Settings

Remove the battery and wait for 10 second, reinstall the battery. When you hear music start up, the key pad flashes, press  key 3 times. Voice prompt initialization successful, device restart. Return to factory.

After setting, the default management password is 123456

The user password is 123456

The user password is 1 Group,

The fingerprint is empty and the others are factory default.

## 5. System locking

When opening the lock continuous input 3 times incorrect user password, or continuous use 3 times wrong finger, system will be locked 10 minute.

When the system is locked, any passwords and fingerprints will not work on the lock

### ● Factory Settings

Follow the voice navigation to set administrator password.

3 times wrong password, "Failure and lock the system", system will be locked for 10 minutes.

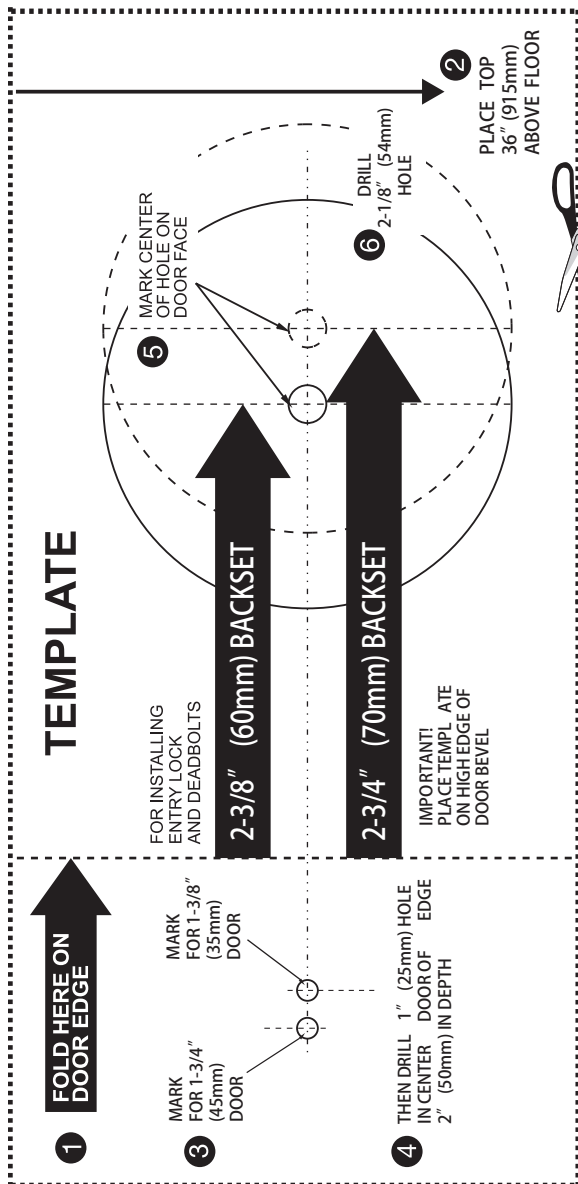
In setting mode, system will quit this mode if no action within 15 seconds.


In setting mode, press  key to exit "Exit setup mode"





# BACK OF TEMPLATE





---

This device complies with Part 15 of the FCC Rules. Operation is subject to the following two conditions: (1) this device may not cause harmful interference, and (2) this device must accept any interference received, including interference that may cause undesired operation.

**Caution:** The user is cautioned that changes or modifications not expressly approved by the party responsible for compliance could void the user's authority to operate the equipment.

**Note:** This equipment has been tested and found to comply with the limits for a Class B digital device, pursuant to part 15 of the FCC Rules. These limits are designed to provide reasonable protection against harmful interference in a residential installation. This equipment generates uses and can radiate radio frequency energy and, if not installed and used in accordance with the instructions, may cause harmful interference to radio communications. However, there is no guarantee that interference will not occur in a particular installation. If this equipment does cause harmful interference to radio or television reception, which can be determined by turning the equipment off and on, the user is encouraged to try to correct the interference by one or more of the following measures:

- Reorient or relocate the receiving antenna.
- Increase the separation between the equipment and receiver.
- Connect the equipment into an outlet on a circuit different from that to which the receiver is connected.
- Consult the dealer or an experienced radio/TV technician for help.