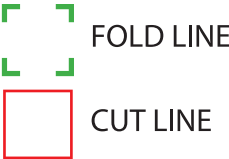


PRINT ARTWORK ON DIRECTLY ON PAPER.  
DO NOT PRINT RED FOLD AND CUT LINES. OPEN USER MANUAL DIMENSIONS: 4.8 in”Wide x 5” High when folded



Face Flip True Wireless Earbuds

©Disney  
www.disney.com

Bluetooth

USER MANUAL

THE BLUETOOTH® WORD MARK AND LOGOS ARE REGISTERED TRADEMARKS OWNED BY BLUETOOTH SIG. INC. AND ANY USE OF SUCH MARKS BY QUEST USA CORP IS UNDER LICENSE. OTHER TRADEMARKS AND TRADE NAMES ARE THOSE OF THEIR RESPECTIVE OWNERS.

\*AT 50% VOLUME

ANDROID IS A TRADEMARK OF GOOGLE LLC.

SIRI IS A TRADEMARK OF APPLE INC.

DISTRIBUTED BY: QUEST USA CORP.  
495 FLATBUSH AVE BROOKLYN, NY 11225

© GOJOY & UJOY ARE REGISTERED TRADEMARKS OF QUEST USA CORP. ALL OTHER TRADEMARKS AND TRADE NAMES ARE PROPERTY OF THEIR RESPECTIVE OWNERS. DESIGNED BY GOJOY & UJOY IN NEW YORK. ALL RIGHTS RESERVED QUEST USA CORP.

ALL PICTURES SHOWN ARE FOR ILLUSTRATION PURPOSE ONLY. ACTUAL PRODUCT MAY VARY DUE TO PRODUCT ENHANCEMENT.

MADE IN CHINA.

FCC ID: 2AJQ7-FCGTWS

•KEY FUNCTIONS

Powering ON/OFF

- To turn the earbuds ON, touch and hold the touch control area of earbuds for two seconds and the LED will flash.
- To turn the earbuds OFF, touch and hold the touch control area of earbuds for five seconds and the LED will turn off.

Pairing:

- Go to your device's Bluetooth settings and ensure Bluetooth features are enabled.
- In your smartphone or computer/tablet, choose "Disney Earbuds" from the list of available devices in the Bluetooth pairing menu.
- The LED indicator on the earbuds will turn off once connected to the relevant device.

Attention: If the auto pairing is not successful, manual pairing between earbuds is most likely needed.

- Make sure the earbuds are charged.
- De-activate the Bluetooth function on your mobile device. Please also disconnect from any other possible mobile device(s) nearby.
- Touch and hold the earbuds for three seconds and wait three to five seconds to activate auto-pairing mode.
- Follow the pairing instructions as listed above to complete the pairing of your device.

Reconnect the Wireless Earbuds to your Mobile Device

- When powered on, the wireless earbuds will automatically connect with the last successfully paired device.

Disconnect the Wireless Earbuds from your Mobile Device

- Power off the wireless earbuds; or switch off the Bluetooth on your mobile phone; or leave the earbuds sixty feet away from your mobile phone or further.

•KEY FUNCTIONS

Right Earbud

- **Single Press:** Play/Pause Audio
- **Double Press:** Next Track
- **Triple Press:** Raise Volume
- **Quadruple Press:** Call back the previous call
- **Press and Hold:** Power On/Off

Left Earbud

- **Single Press:** Play/Pause Audio
- **Double Press:** Previous Track
- **Triple Press:** Lower Volume
- **Quadruple Press:** Call back the previous call
- **Press and Hold:** Power On/Off

Phone Calls

- When there is an incoming call, any audio playing will be paused.
- To answer a call, press the control button once on either earbud.
- To end a call, press the control button on either earbud while on the call.
- To reject a call, press and hold the control button.
- Volume controls may not work during phone calls with some smartphone models.

•PACKAGE CONTENTS

1x CHARGING CASE,  
2x EARBUDS,  
3x SIZE (S/M/L) CUSHIONS,  
1x LANYARD,  
1x 11 INCH/30 CM CHARGING CABLE,  
1x MANUAL

•DEVICE FUNCTIONS

TOUCH CONTROLS  
(ON/OFF/PLAY/PAUSE MUSIC/  
ANSWER/END CALL)

LED INDICATOR

USB TYPE-C  
CHARGING PORT

CHARGING  
LED INDICATOR

•PRODUCT SPECIFICATIONS

- Bluetooth Version: 5.3
- Standby Time: >20Hrs
- Working Distance: 33 Ft
- Charging Voltage: 5V
- Charge Connector: USB C
- Case Battery: 200mAh
- Case Charge Time: 1.5Hrs
- Earbuds Battery: 2X 30 mAh
- Earbuds Charge Time: 1 Hr
- Sensitivity: 95db
- Impedance: 16 Ohm
- Frequency Response: 20Hz-20k Hz

•BATTERY CAUTION

The battery used in this device may present a risk of fire, explosion or chemical burn if used incorrectly. Never use or charge the battery if it appears to be leaking, discolored, deformed or in any way abnormal. Never disassemble the unit or attempt to remove the battery as that could cause leakage of alkaline solution or other electrolytic substances. Never expose the battery to any liquid. Never expose the battery to excessive heat such as direct light or fire. Always keep the battery out of the reach of infants and small children.

•BATTERY DISPOSAL

Please do not attempt to change the battery yourself. If the battery has died, you should follow the disposal instructions listed here. Never dispose of used batteries/electronics with ordinary solid wastes. Always dispose of used batteries/electronics in accordance with the prevailing community regulations that apply to the disposal of batteries/electronics. If there are no local regulations concerning battery/electronics disposal, please dispose of the device in a waste bin for electronic devices. Many electronics retailers now recycle batteries and other electronic components at no charge.

•IMPORTANT REMINDERS

This device can ONLY be charged by 5V adapter/ USB ports only. Quick charging devices over 5V may cause heat and fire.

•CHARGING

- Place the earbuds in the case.
- Connect the USB C charging cable to the charging port on the case.
- Plug the cable into a standard USB A output.
- When you plug the case into a charging adapter the LED light on the front of the case will flash red. This means the case battery is being charged.
- When fully charged, the LED on the case will glow solid red and the earbud LEDs will shut off.
- When fully charged, unplug the charging cable from the power source.

To charge the earbuds in the charging case, simply place them in the case.

•OTHER IMPORTANT SAFETY INFORMATION

Disposal of old electronic & electronic equipment (Applicable in the European Union and other European Counties with separate collection systems) The trash can symbol (seen on the bottom) on the production indicates that this product shall not be treated as household waste. Instead it shall be handed over to the applicable collection point for recycling of electronic equipment. By ensuring this product is disposed of correctly, you will help prevent potential negative consequences for the environment and human health, which could otherwise be caused by inappropriate waste handling. For more detailed information about this product, please contact your local household waste disposal service or the shop where you purchased this item.

•FCC

This device complies with part 15 of the FCC Rules. Operation is subject to the following two conditions:  
(1) This device may not cause harmful interference, and  
(2) this device must accept any interference received, including interference that may cause undesired operation.  
Warning: Changes or modifications not expressly approved by the party responsible for compliance could void the user's authority to operate the equipment.  
  
NOTE: This equipment has been tested and found to comply with the limits for a Class B digital device, pursuant to Part 15 of the FCC Rules. These limits are designed to provide reasonable protection against harmful interference in a residential installation. This equipment generates uses and can radiate radio frequency energy and, if not installed and used in accordance with the instructions, may cause harmful interference to radio communications. However, there is no guarantee that interference will not occur in a particular installation. If this equipment does cause harmful interference to radio or television reception, which can be determined by turning the equipment off and on, the user is encouraged to try to correct the interference by one or more of the following measures:  
  
Reorient or relocate the receiving antenna.  
Increase the separation between the equipment and receiver. Connect the equipment into an outlet on a circuit different from that to which the receiver is connected.  
Consult the dealer or an experienced radio/TV technician for help.  
  
RF warning statement:  
The device has been evaluated to meet general RF exposure requirements. The device can be used in portable exposure conditions without restriction.  
  
•WARNING  
At full volume, prolonged listening may lead to a ruptured eardrum (temporary or permanent deafness, hearing drone, tinnitus, hyperacusis). Please listen at a medium-low volume and no more than one hour a day.  
  
Please insert the proper battery needed correctly to prevent explosion.

ALL PICTURES SHOWN ARE FOR ILLUSTRATION PURPOSE ONLY. ACTUAL PRODUCT MAY VARY DUE TO PRODUCT ENHANCEMENT.