



MUSIC CHOICE

- 15 Sounds selectable
- 24 Sounds selectable
- 32 Sounds selectable

Any inquiry please call up our authorized distributors.

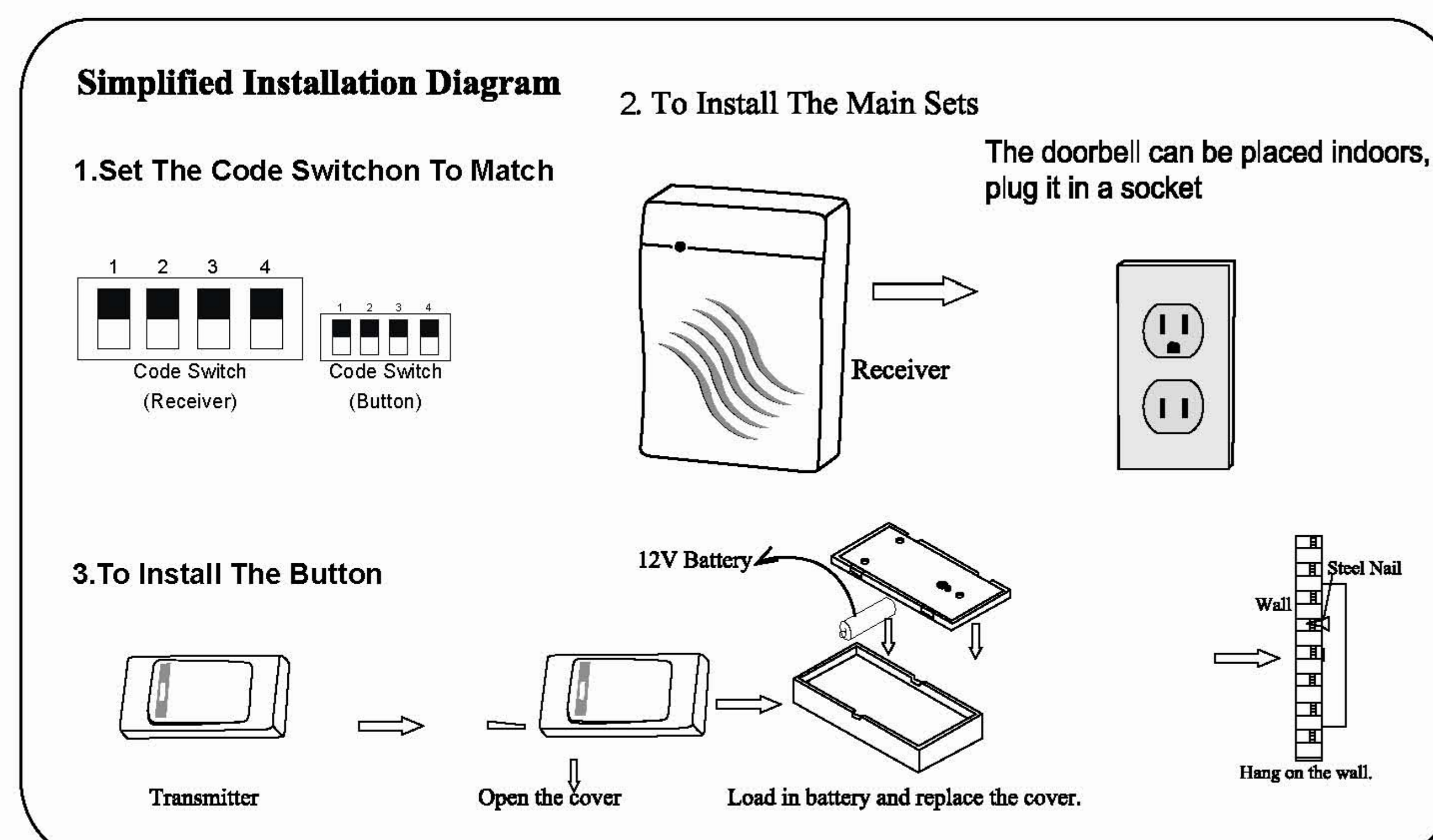
Quhwa has always been laying Stress on the environmental protection. The new QIAOHUA doorbell, with a built-in envi.-prot. electricity-eco-nomizing system, will be on sale in Europe, U.S.A and even all over the world. The packing paper is of recycle. We're sure you will support us in the envi.-prot. movement. From now, you can hear the musical sound at home and enjoy protecting our environment at the same time.

Musical noise announces the arrival of visitors

- The wireless system makes installation easy and brings no effect on your interior decoration.
- The strong digital anti-interference prevents interference between users and misringing.
- The ultra-distance remote control (100 metres long) meets the need of various buildings.
- European style and delicate streamlined design brings your home beauty
- With loud and musical noise. The tone has been identified by music master. It's really the guarantee of high quality and our confidence.
- With very low power consumption, less than 5w. Transmitter's battery can be used more than 1 year.
- It's suitable for homes, office buildings, hotels and reception halls, etc. With it, you won't miss every visitor.
- Multimusic sound(Model) for chloce.

The convenient and unique designs adds luster to your home

- The doorbell must match the pushbutton. Set the code switch on the button the same as that on the receiver, to build connection between both unit. Otherwise the doorbell won't work
- Fix the push button at the door with screws glass glue or dual-side sponge adhesive tape. Be sure not to let it close to any metal object or expose it to rains. The battery may last for one year (20 times/day).
- The doorbell can be placed indoors, plug it in a socket. (with less than 5w power consumption).
- Please replace the batteries when you find it can't work properly after a period of time's use.

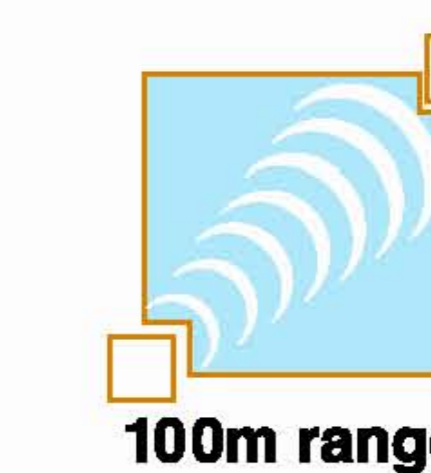


The apparatus shall not be exposed to dripping or splashing and that no objects filled with liquids, such as vases, shall be placed on the apparatus.

2. A warning that battery shall not be exposed to excessive heat such as sunshine, fire or the like
3. the mains plug is used as the disconnected device, the disconnect device shall remain readily operable.
4. the following information with regard to safety are recommended if applicable:
 - dispose of the battery only at approved disposal sites. Do not dispose them in a fire, throw them in a trash receptacle, put them in a recycling bin not intended for their disposal, or otherwise discard them in a manner that may result in their being hazardous to the environment.

THIS DEVICE COMPLIES WITH PART 15 OF THE FCC RULES
OPERATION IS SUBJECT TO THE FOLLOWING TWO CONDITIONS
(1) THIS DEVICE MAY NOT CAUSE HARMFUL INTERFERENCE AND
(2) THIS DEVICE MUST ACCEPT ANY INTERFERENCE RECEIVED,
INCLUDING INTERFERENCE THAT MAY CAUST UNDESIRED OPERATION

Changes or modifications not expressly approved by the party responsible for compliance could void the user's authority to operate the equipment.



16 Codes Selectable
Avoiding Intevference
From Your Neighbor's
No Wiring Required



QUALITY THE FIRST