

Quhwa

QH-823A

Wireless Digital Doorchimes

Auto-match code transmission
Waterproof bell push

FCC NOTE:

This device complies with Part 15 of the FCC Rules. Operation is subject to the following two conditions: (1) this device may not cause harmful interference, and (2) this device must accept any interference received, including interference that may cause undesired operation.

The manufacturer is not responsible for any radio or TV interference caused by unauthorized modifications to this equipment. Such modifications could void the user's authority to operate the equipment.

For a Class B digital device or peripheral, the instructions furnished the user shall include the following or similar statement, placed in a prominent location in the text of the manual:

NOTE: This equipment has been tested and found to comply with the limits for a Class B digital device, pursuant to Part 15 of the FCC Rules. These limits are designed to provide reasonable protection against harmful interference in a residential installation. This equipment generates, uses and can radiate radio frequency energy and, if not installed and used in accordance with the instructions, may cause harmful interference to radio communications. However, there is no guarantee that interference will not occur in a particular installation.

If this equipment does cause harmful interference to radio or television reception, which can be determined by turning the equipment off and on, the user is encouraged to try to correct the interference by one or more of the following measures:

- Reorient or relocate the receiving antenna
- Increase the separation between the equipment and receiver.
- Connect the equipment into an outlet on a circuit different from that to which the receiver is connected.
- Consult the dealer or an experienced radio/TV technician for help.



QUALITY THE FIRST

Quhwa

QH-823A

Wireless Digital Doorchimes

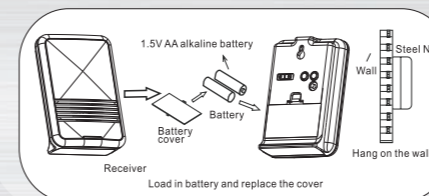
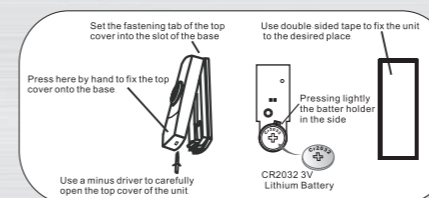
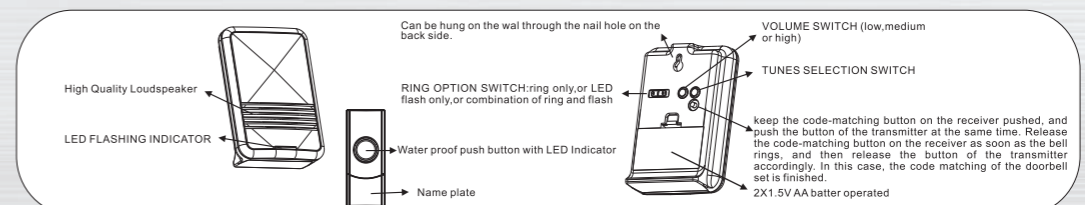


MUSIC CHOICE

- 15 soundable chimes
- 36 soundable chimes

- ★ The wireless system makes installation easy and brings to effect on your interior decoration.
- ★ The ultra-distance remote control (>80M) meets the need of various buildings.
- ★ Fix the pushbutton on the door with screws glass glue or dual-side sponge adhesive tape. Be sure not to let it close to any metal object or expose it to rains. The battery may last for one year (20 times/day).
- ★ Open the battery compartment lid, and insert two alkaline batteries of "AA" size (Manganese batteries can't last long and electrolyte may leak). With any low power consumption, alkaline battery may last for one year (20 times/day).
- ★ The doorbell can be placed anywhere indoors, you can even move it as you like. It's suitable for homes, office buildings, factories, hotels and reception halls, etc. With it, you won't miss every visitor.
- ★ Please replace the batteries when you find it can't work properly after a period of time's use.

1. This appliance is not intended for use by persons (including children) with reduced physical, sensory or mental capabilities, or lack of experience and knowledge, unless they have been given supervision or instruction concerning use of the appliance by a person responsible for their safety.
2. Children should be supervised to ensure that they do not play with the appliance.



Made In P.R.C

