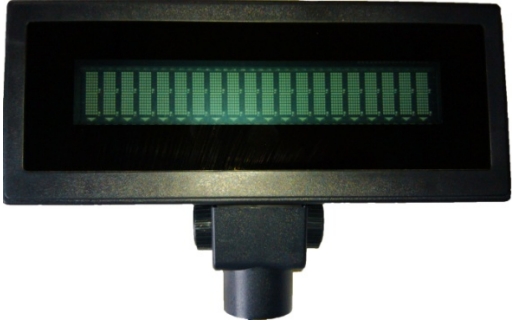





VC220 Manual

1 Customer Display Components.....	2
2 Customer Display Installation.....	3
3 Customer Display Set Discription.....	3
3.1 Install customer display setup software.....	3
3.2 Use customer display setup software	3
4 Customer Display Test	6
4.1 Test software installation	6
4.2 Use the testing software.....	6
5. Customer Display Specifications.....	8

1 Customer Display Components

<p>1. VFD Display</p>	 A rectangular black VFD display with a green LED screen showing a grid of characters. It has a mounting bracket at the bottom.
<p>2. Customer Display Pole</p>	 A long, thin, black cylindrical pole with a slightly wider top section.
<p>3. Customer Display Base</p>	 A black, semi-circular metal base with a circular hole on the left side and a mounting bracket on the right side.
<p>4. Customer Display Cable</p>	 A black cable with a USB-A connector on one end and a custom connector on the other. A small white label is attached to the cable.

2 Customer Display Installation

- ① Connect customer display components to bottom plate expansion board, connect signal cable to COM3; plug one side of power supply into motherboard USB interface, plug the other side into circular power port of the customer display signal cable.
- ② Push forward the whole component into the host, which having location clip on the left and right side;
- ③ Fix screws with screw driver from top to bottom to prevent them falling off.

3 Customer Display Set Discription

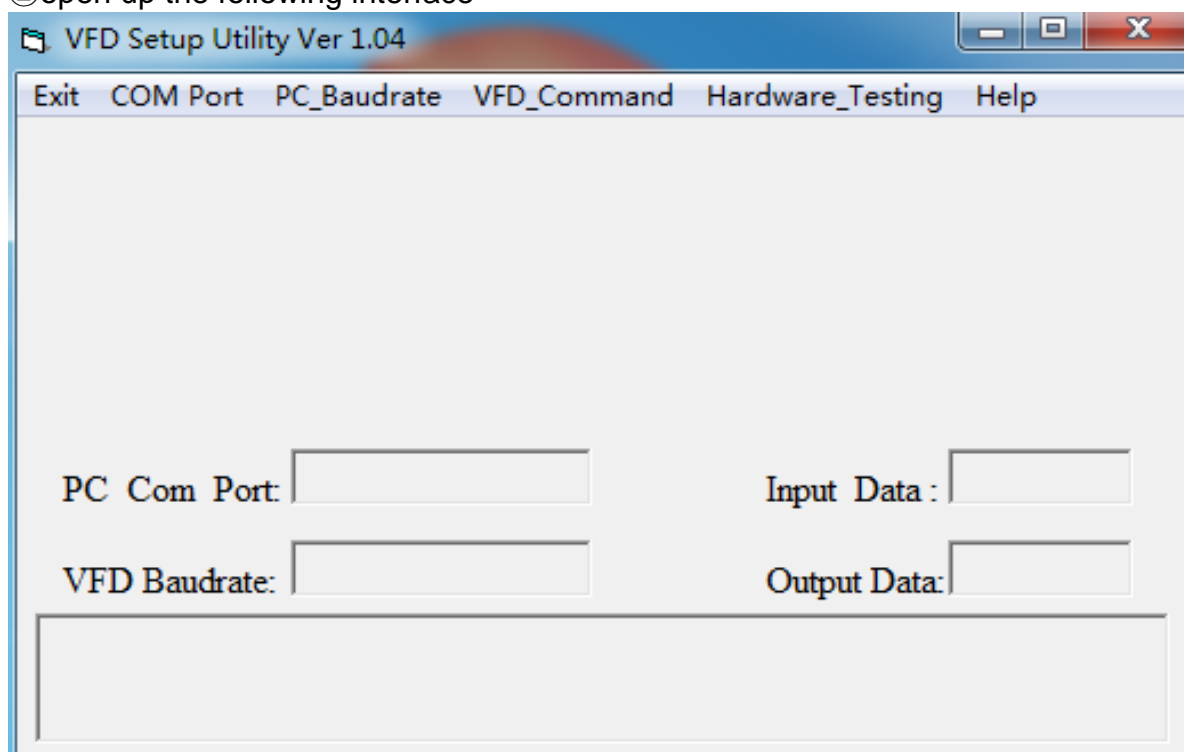
3.1 Install customer display setup software

Double click setup software, accept all the default settings.

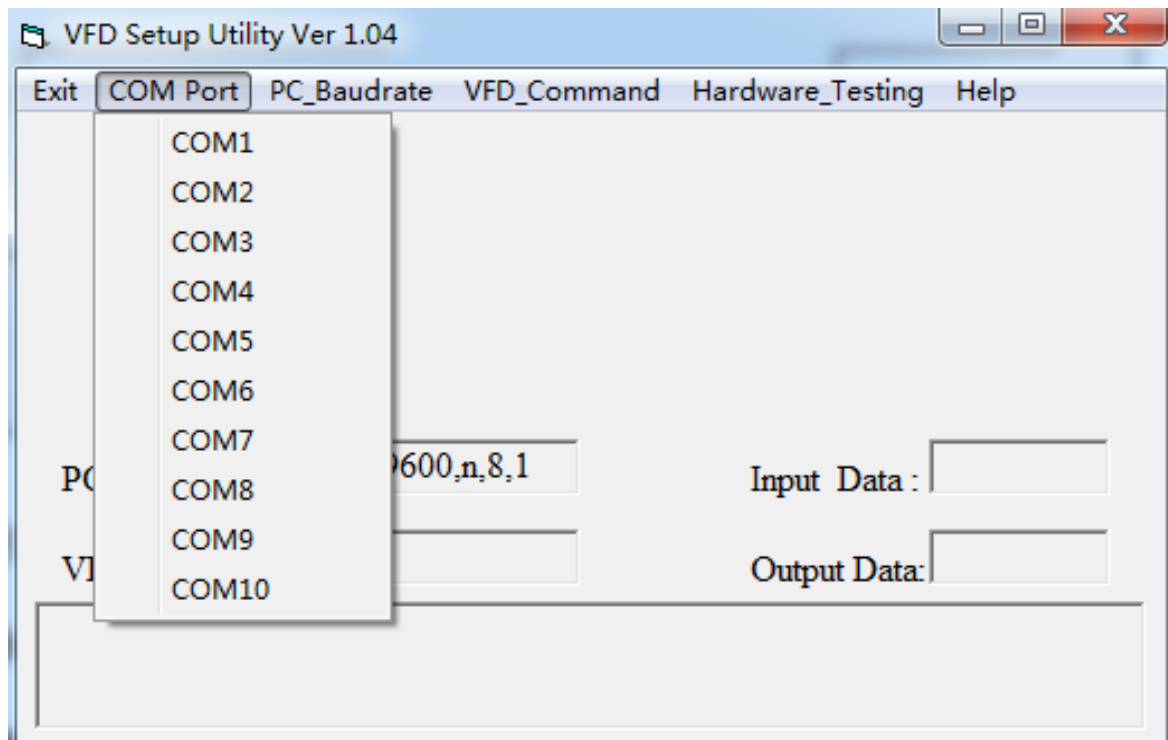
3.2 Use customer display setup software

- ① double click VFD_Setup_Utility icon  on the desktop.

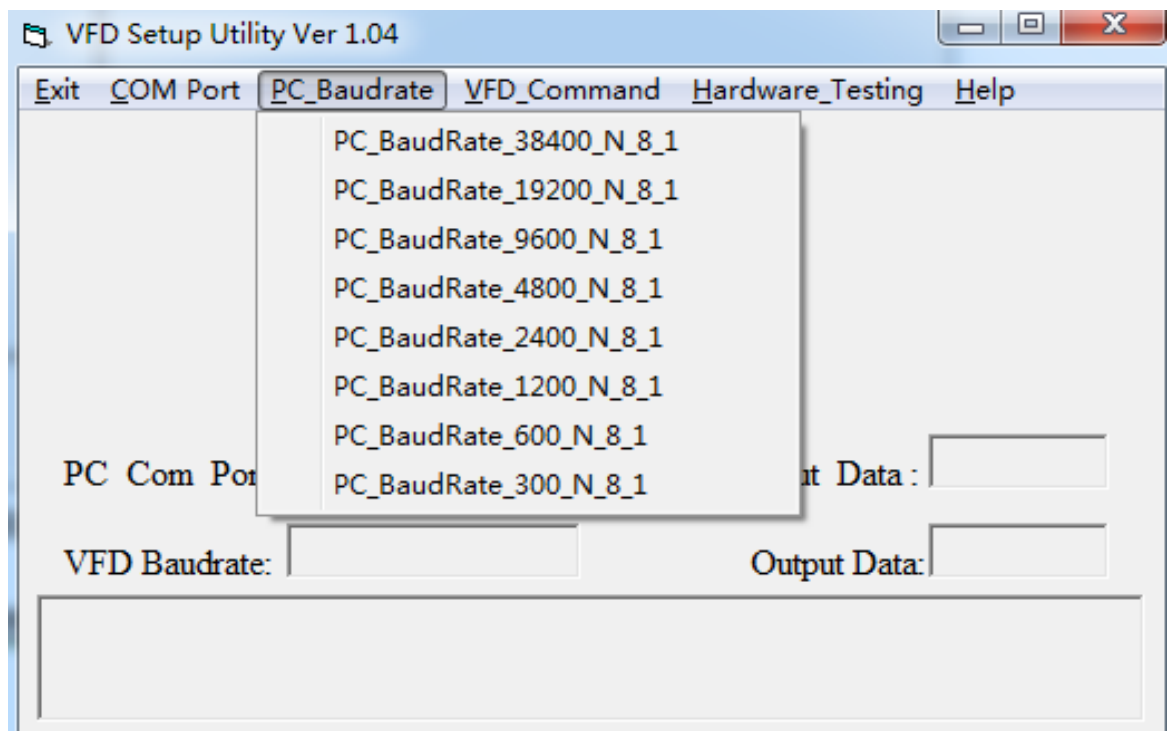
- ② open up the following interface



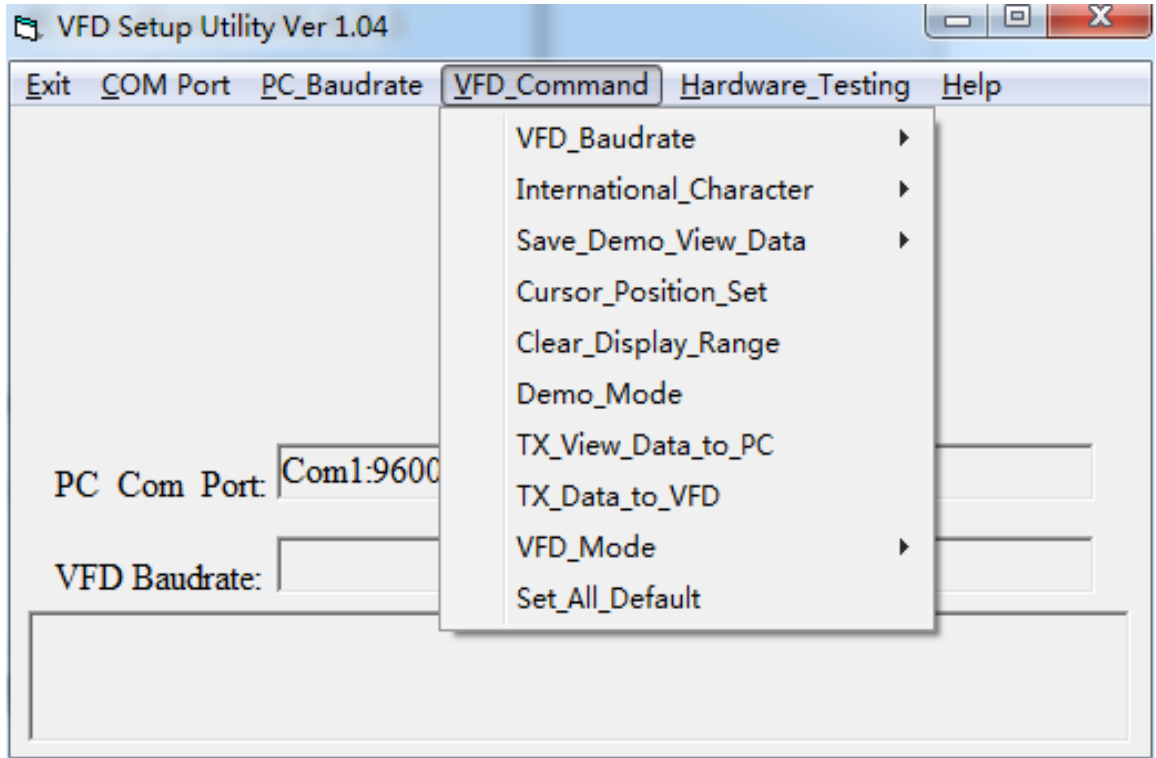
“COM Port” menu sets which COM port the customer display will connect to.



“PC_Baudrate” menu sets computer Baud rate.



“VFD_Command” menu sets customer display’s Baud rate, language and so on.



4Customer Display Test

4.1 Test software installation

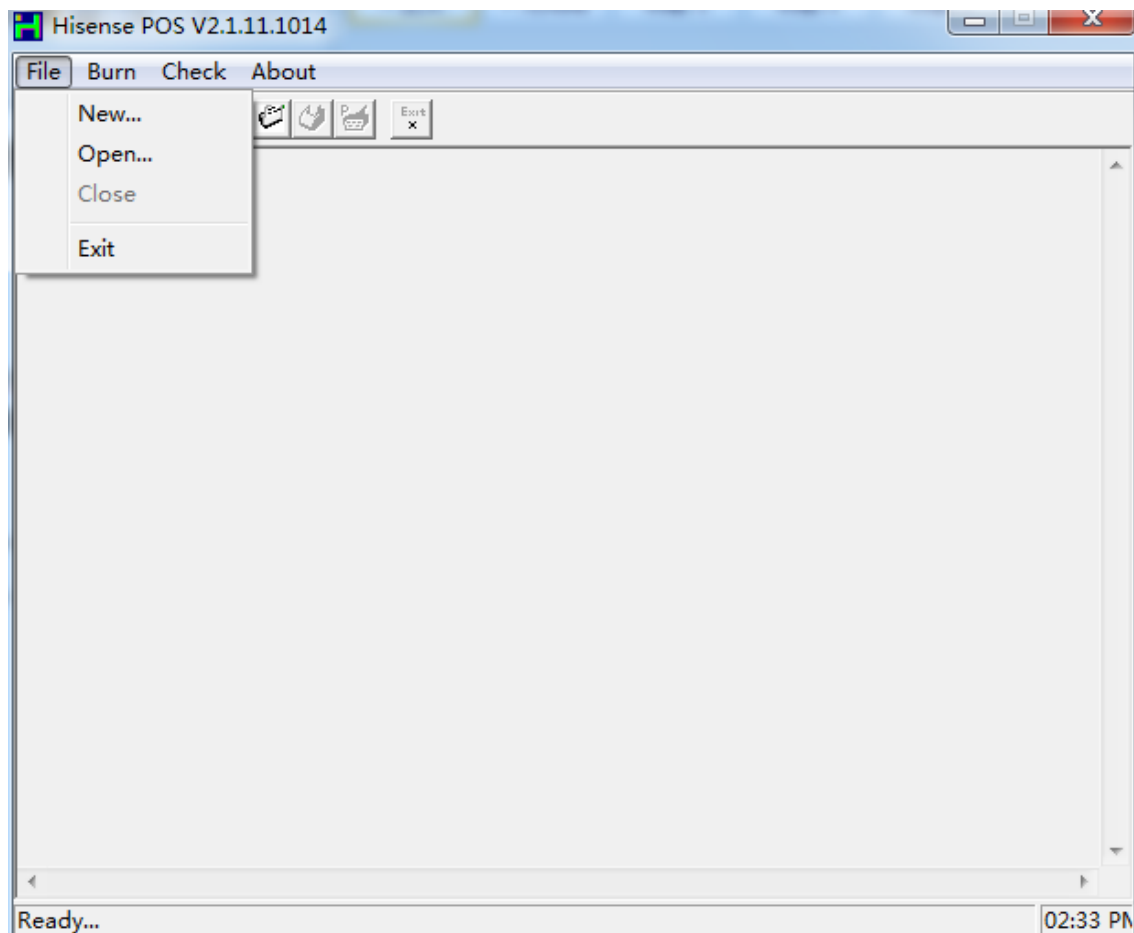
Double click setup software, accept all the default settings.

4.2 Use the testing software

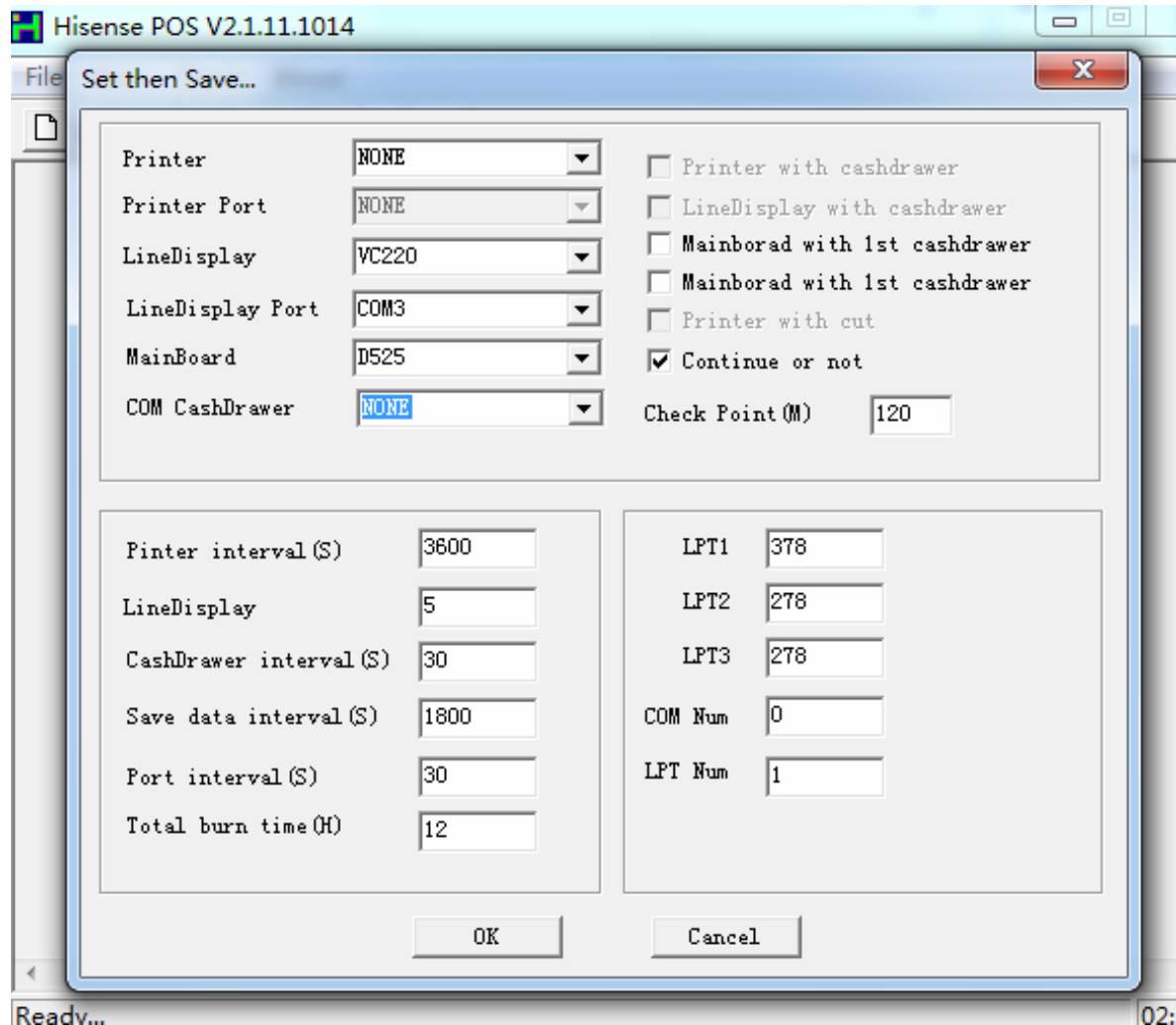


①double click Wincheck icon on the desktop.

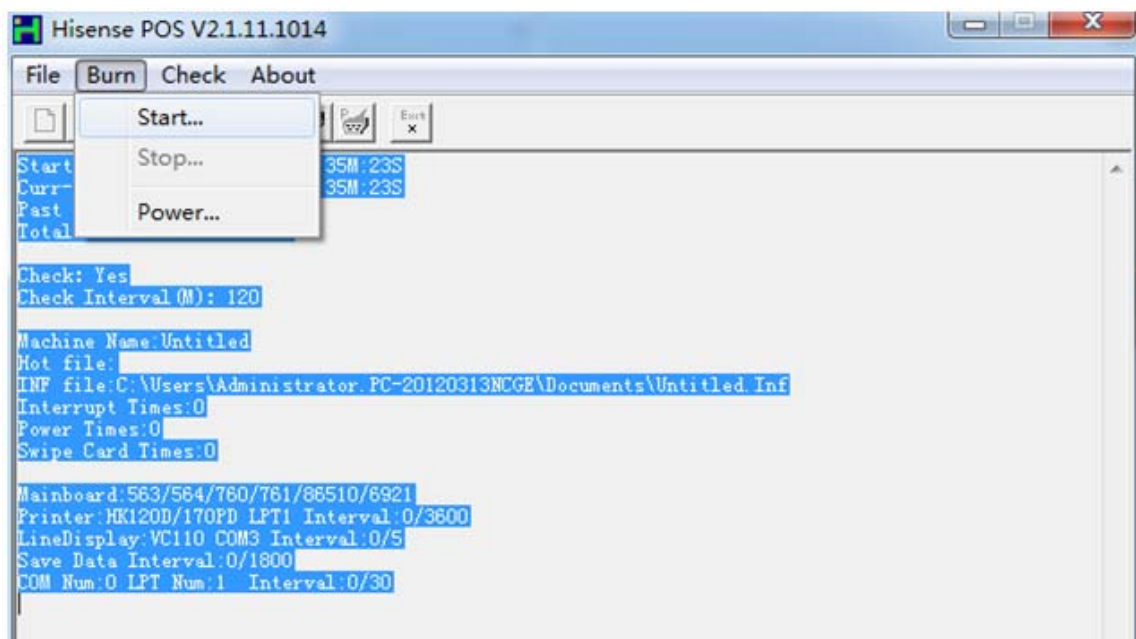
②click “file”-“new” on the interface.



③Printer chooses 'NONE' , LineDisplay chooses 'VC220' , LineDisplay port chooses the corresponding port that customer display connects to . Mainboard chooses 'D525', COM CashDrawer chooses "NONE", and other options accept the default settings, then click "OK" button.



Readv... 02:
 ④click “save” button, then click “Burn”-“Start”.



5.Customer Display Specifications

Model	VC220
Display mode	VFD
Character color	Green
Digital format	5*7 point Matrix
Character size	5.5*10.5 mm
Character	7.4*15.5 mm
Display area(mm)	146.1*29
Power supply	+5V~+24V
Interface	RS-232
Baud rate	9600
Size (WxDxH)	200mmx25mmx65mm
Color	Dark Grey
Stereoscopic height adjustable	Yes
Mean time to failure	20000 hr
Power	5W
Working temperature	0 °C - +75°C
Storage temperature	-40 °C - +85°C
Working humidity	30- 85%
Storage humidity	30- 90%

FCC ID: GQK-VC220

This device complies with Part 15 of the FCC Rules. Operation is subject to the following two conditions: (1) this device may not cause harmful interference, and (2) this device must accept any interference received, including interference that may cause undesired operation.

Changes or modifications not expressly approved by the party responsible for compliance could void the user's authority to operate the equipment.

NOTE: This equipment has been tested and found to comply with the limits for a Class B digital device, pursuant to Part 15 of the FCC Rules. These limits are designed to provide reasonable protection against harmful interference in a residential installation. This equipment generates, uses and can radiate radio frequency energy and, if not installed and used in accordance with the instructions, may cause harmful interference to radio communications. However, there is no guarantee that interference will not occur in a particular installation. If this equipment does cause harmful interference to radio or television reception, which can be determined by turning the equipment off and on, the user is encouraged to try to correct the interference by one or more of the following measures:

- Reorient or relocate the receiving antenna.
- Increase the separation between the equipment and receiver.
- Connect the equipment into an outlet on a circuit different from that to which the receiver is connected.
- Consult the dealer or an experienced radio/TV technician for

help.