

USER MANUAL

Model: UN-P

This device complies with Part 15 of the FCC Rules. Operation is subject to the following two conditions: (1) this device may not cause harmful interference, and (2) this device must accept any interference received, including interference that may cause undesired operation.

Changes or modifications not expressly approved by the party responsible for compliance could void the user's authority to operate the equipment.

NOTE: This equipment has been tested and found to comply with the limits for a Class B digital device, pursuant to Part 15 of the FCC Rules. These limits are designed to provide reasonable protection against harmful interference in a residential installation. This equipment generates, uses and can radiate radio frequency energy and, if not installed and used in accordance with the instructions, may cause harmful interference to radio communications. However, there is no guarantee that interference will not occur in a particular installation. If this equipment does cause harmful interference to radio or television reception, which can be determined by turning the equipment off and on, the user is encouraged to try to correct the interference by one of the following measures:

- Reorient or relocate the receiving antenna.
- Increase the separation between the equipment and receiver.
- Connect the equipment into an outlet on a circuit different from that to which the receiver is connected.
- Consult the dealer or an experienced radio/TV technician for help.

Thanks for purchase our Talking Flower Printer. This book mainly explains the capability, operation, setting and the connection of the printer. Please carefully read and abide this book before operate the Talking Flower Printer.

1. Please make sure the computer has no connection with other printers, cameras or their drivers before using the Talking Flower Printer. The Talking Flower Printer may can't work normally if there are other printers, cameras or drivers connected to the computer.
2. When install the Talking Flower Printer, please install the camera driver first, make sure the Talking Flower Printer and the computer were connected by the USB line, then go next step. The system may can't work normally if disturb this order.
3. Please connect the Talking Flower Printer to the power before install the printer driver. Please follow the method and the photos in this book, otherwise, you may cause exceptional situation. (Photo 4.3 is the installation of printer driver)
4. Please take care the packing of the Talking Flower Printer, don't miss it. When you move the Talking Flower Printer, please well packing with the original items, otherwise, the problems caused by misuse or bad packing not include in the warranty.

ATTENTION

1. This book has already detailed explained the capability, operation, setting, connection and other attentions, if you have any other questions, please contact us.
2. Transship part or all the contents of this book without any permission is forbidden.
3. Because of the different developing and producing period, the actual operation maybe a little different.
4. During the using, some data may be destroyed or missing because of the data, hardware, misuse or some other reasons. Our company can't assure completely, please copy your important data to avoid

this situation.

5. The usage of this book is to satisfy most of the customers, not for some customers' specifically requirements.
6. We are not considering the interference of some electronic devices, such as medical treatment devices, aviation universe equipments, and atom drive equipments during developing the Talking Flower Printer. We never take any responsibility if some accidents or property losses caused by these interferences during using the machine.
7. The flowing items indicates the damages may occur under safety measure, if you don't pay attention to these warnings and go on using the machine, we never take any responsibly of the losses caused by these., please read carefully before using the machine.

- WARNING** Indicates that if ignore this mark and go on misusing, you may cause accidents which lead to death or GBH.
- ATTENTION** Indicates that if ignore this mark and go on misusing, you may cause accidents which lead to body harm of property losses.
- WARNING** Please don't open or repair the machine, monitor, wires and other attachments arbitrarily.
- WARNING** Please pay special attention during operation, any misuse may cause fire, please don't destroy monitor, curve wires, or put some heavy things on the monitor and wires.
- WARNING** Please fix the internal attachments, wires and linker to the machine to avoid the children's touch. Please don't let the children touching the machine during operation.
- WARNING** Please don't fix or change the parts inside the machine when the power on. Please change the ink cartridges when power off.
- WARNING** Please touch the machine by wet hands, you may get an electric shock when power on or cause machine problem when power off.
- WARNING** If the machine smoking or emit peculiar smell, please cut the power of the computer and the machine at once.
- WARNING** Please don't use the machine under following situation:
Under burning sun, in bath room, under strong magnetic filed, under static effect, under dusty, under vibration, on the uneven ground, in the hot gases, under the make water or creepage condition, in the place where deposited antiseptic or other harmful leechdom, in the very cold places. Please use the machine under 10-40°C, relative humidity 65%-60%.
- WARNING** Please don't drop liquid or put other objects into the machine, if you drop some liquid or other objects into the machine, put cut down the power at once.
- WARNING** The problems caused by man-made reasons not include in the warranty. Please don't put anything on the machine.
- WARNING** To avoid fire, please cut down the power, disconnect the USB line when stop using.
- ATTENTION** The monitor is electronic device, it may produce static, please take care when uninstall. Please touch the machine carefully before using to avoid static.
- ATTENTION** Please don't use the power supply and voltage not suit to the nameplate on the machine.
- ATTENTION** Please well packing the machine when you move or send back to us for repair.
- ATTENTION** Please don't clean the machine by organic impregnant such as thinner, naphtha, please clean the linker.
- ATTENTION** Please obey the local law when you discard the machine.

ATTENTION OF INK CARTRIDGES

1. Please inquiry the original seller if you have any questions with the machine.
2. The valid use period is one year from purchase date.
3. During the validity, if you have any dissatisfaction with the machine, please come to the original sell

for discussing.

4. The after-sale service is only under normal use, please correct use it according to the user manual. The problems caused by misuse, improper storage, over use or any change without our permission not include in the warranty.

WARNING Indicates that if ignore this mark and go on misusing, you may cause accidents which lead to death or GBH.

ATTENTION Indicates that if ignore this mark and go on misusing, you may cause accidents which lead to body harm of property losses.

WARNING Please don't eat the ink in the cartridge, if eat by mistake, please see the doctor in time.

WARNING Please don't drop the ink into eyes.

WARNING Please keep the ink cartridge out of the children's touch.

ATTENTION Please don't break, librate, shake or knock the ink cartridge.

ATTENTION We don't take any responsibility of the problems that caused by the change or the block of the ink cartridge.

ATTENTION Please don't repeated use or change the ink cartridge.

ATTENTION Please don't put the ink cartridge under strong sunshine, please keep in normal temperature.

ATTENTION Please use the ink cartridge during the validity.

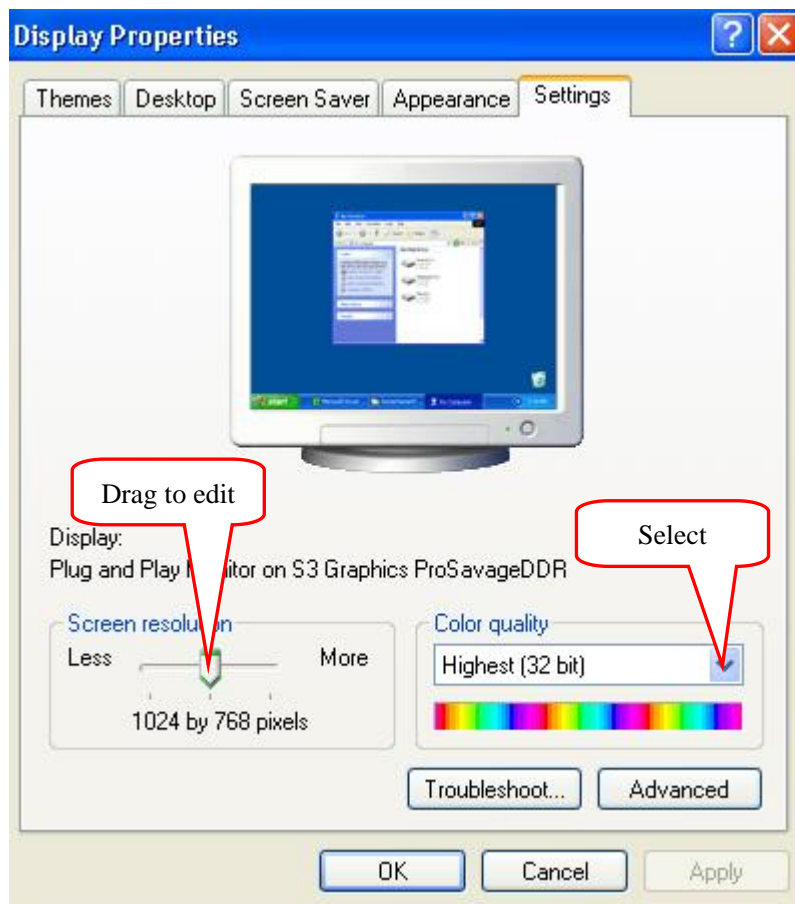
ATTENTION Please don't use other consumables except special colors and pre coats.

INDEX

I.	Technical index	5
II.	Installation.....	6
2.1	Open the CD to start the installation interface	6
2.3	Install printer driver.....	6
2.4	Install Talking Flowers gallery	11
2.5	Install Talking Flowers software	12
2.6	Close installation interface	15
2.7	Restart computer	15
2.8	Printer setting	16
2.9	Set Talking Flowers Program	18
III.	Usage.....	20
3.1	Choose images from default gallery.....	20
3.2	Adjusting images and printing.....	21
3.3	Preview or delete selected images	23
3.4	Custom images	23
3.5	Word Edit	25
3.6	Picture Edit.....	27
3.7	Printing.....	34
IV.	Clean and change ink cartridge	38
V.	Uninstall	41
5.1	Enter “Add or remove programs”.....	41
5.2	Delete printer driver	42
5.3.	Delete Talking Flower Gallery	43
5.4.	Delete Talking Flower Program	44

I. Technical index

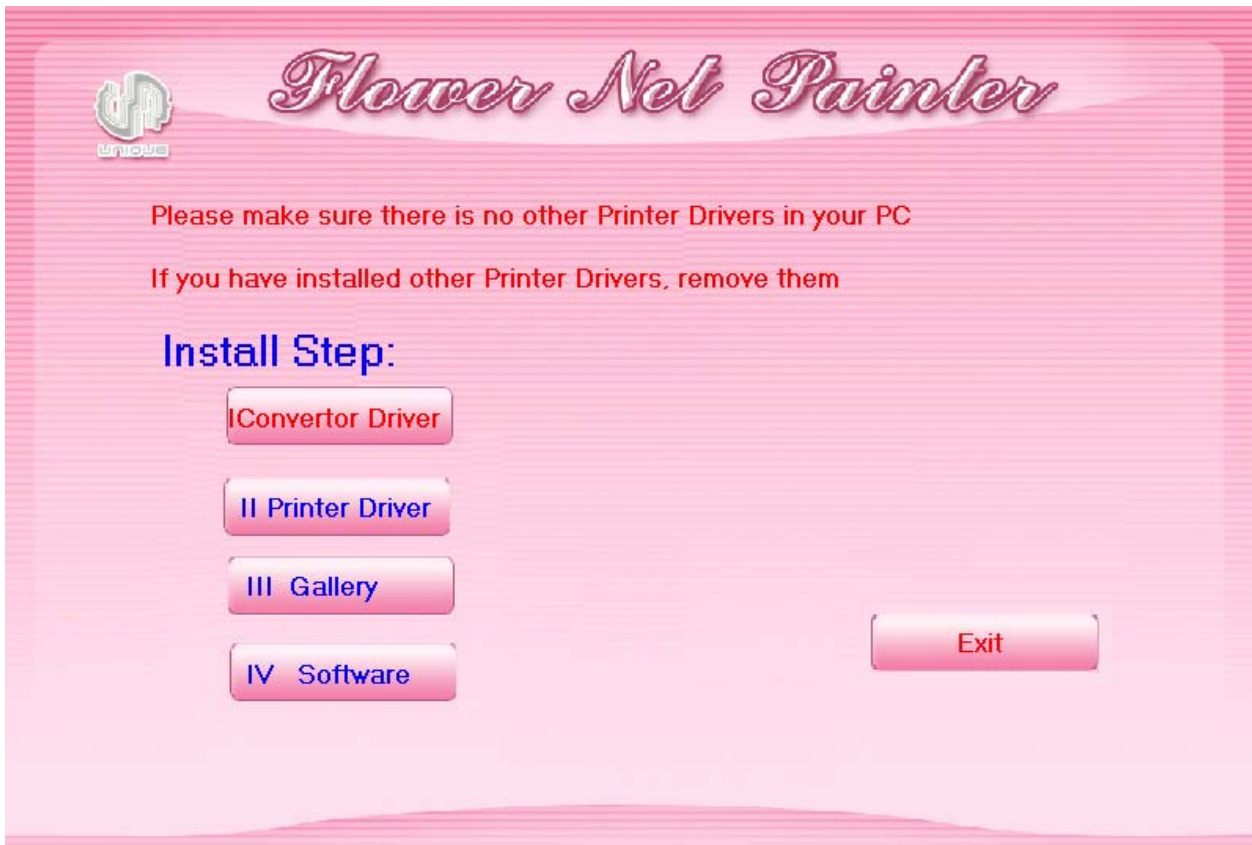
- ◆ Product size: 460mm×295mm×250mm
- ◆ Working condition:
 - Temperature: 10~40°C
 - Relative humidity: 50 %~60%
- ◆ Voltage: AC 220V 50Hz or 110V/50Hz (Please check the nameplate on the machine for the details)
- ◆ Computer system (recommended) :
 - Operation system: WINDOWS XP
 - CPU: Intel Celeron600MHz and above
 - DDR Memory: 128M and above
 - VGA 24 bit resolution and support DirectX
 - CD-ROM
 - HDD 1G space (decide on the gallery)
 - 2 USB 2.0
 - Monitor solution: 1024 x 768 pixel; Color quality: highest (32bit).



II. Installation

2.1 Open the CD to start the installation interface

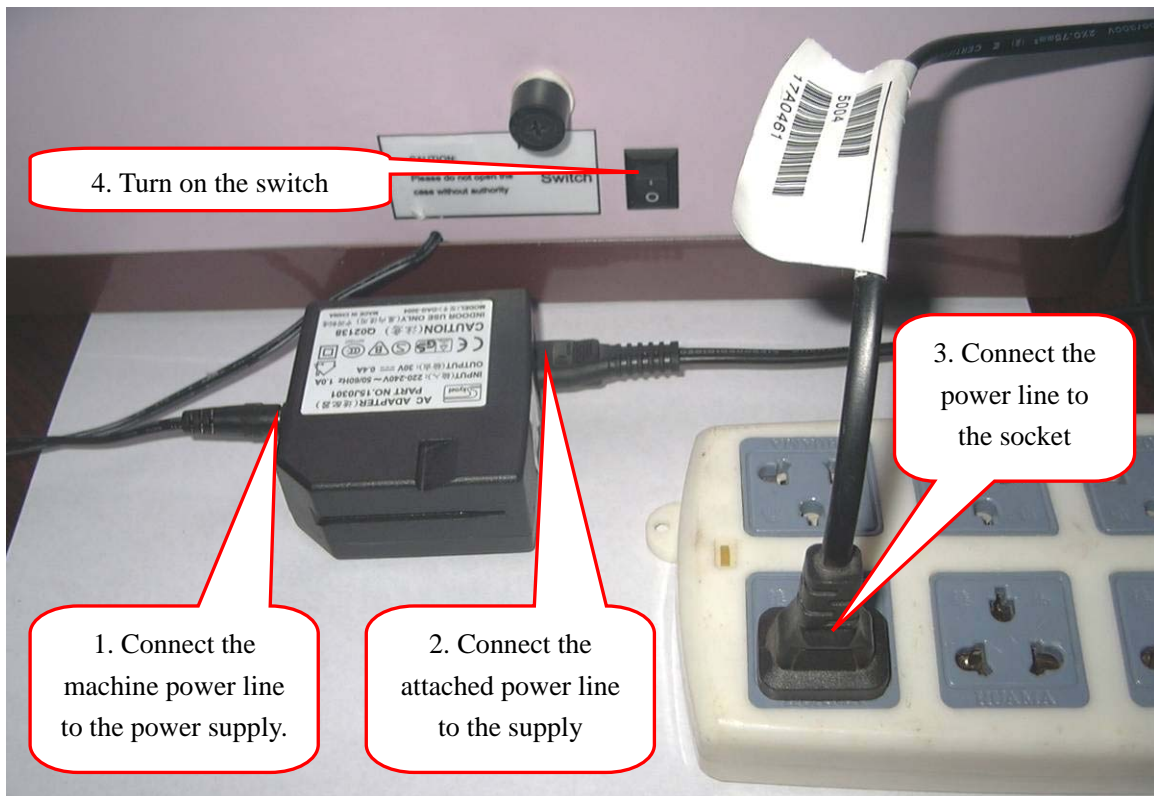
Put the Talking Flowers software CD into CD-ROM, the system will appear the following interface automatically. If not appear the following interface, please preview the CD, then double click “Autorun.exe”.



2.3 Install printer driver

A. Connect power

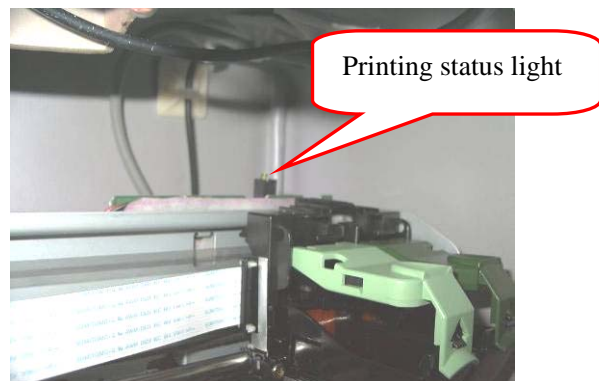
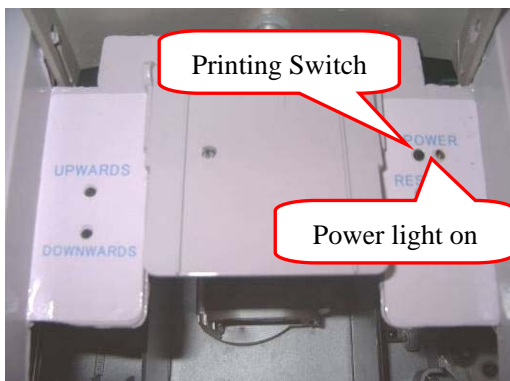
- 1) Please connect the machine power line (black) to the power supply.
- 2) Please connect the attached power line to the supply.
- 3) Please connect the power line to the socket.
- 4) Turn on the switch on the back of the machine.(The machine may has some sound at this time, this is normal)



5) The “power light” on the machine will be bright; the “printing status light” inside the machine will be bright also.

ATTENTION:

1. If the “printing status light” is not on, please press “printing switch” about 2 seconds, then release.
2. Press “printing status light” longtime is forbidden, otherwise, the printing system will be problem.



B. Install ink cartridge

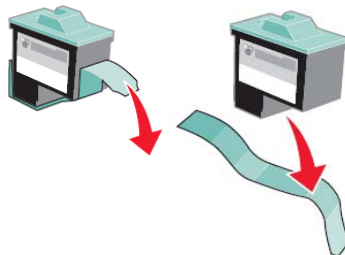
- 1) Press the “center” button on the machine, the cartridge plate will move to center.



- 2) Open the left lid.



- 3) If you install the new ink cartridge, please remove the sticker first as follows:
ATTENTION: Please don't touch the golden area on the ink cartridge.



- 4) Please put the ink cartridge into cartridge plate, and close the lid.

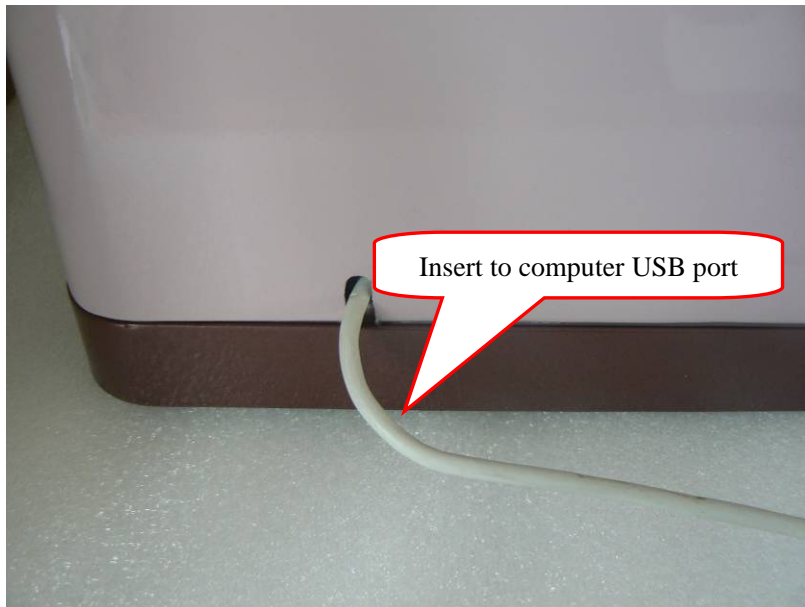


- 5) Press "Reset" button, the cartridge plate will go to the original place.

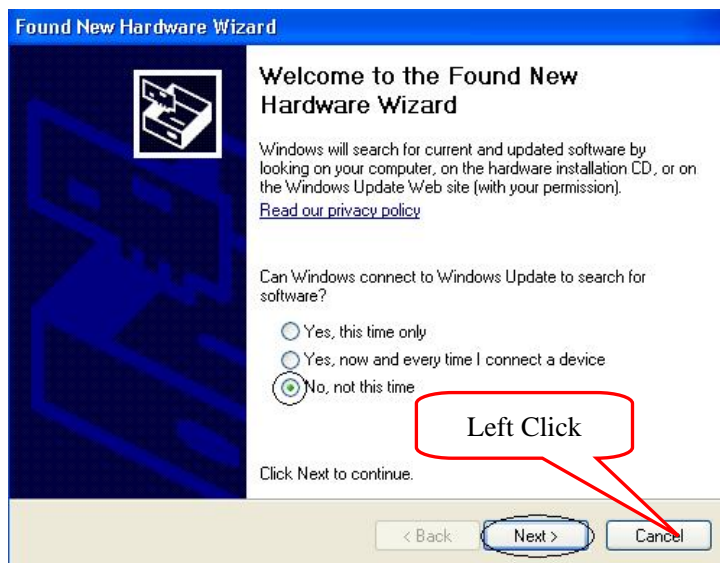


C. Connect printer USB line

- 1) Connect printer USB line (white, with “printer” label) to the computer USB port.



- 2) Click “Cancel”, close the “Found new hardware” windows.

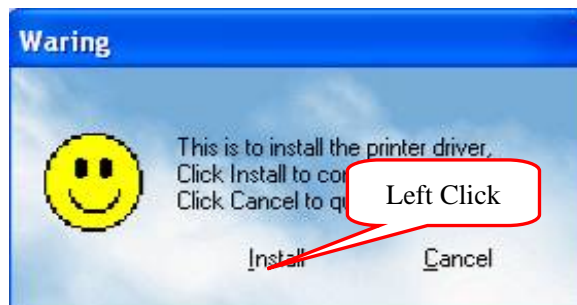


D. Install printer driver

- 1) Click "Printer driver" on the installation interface.



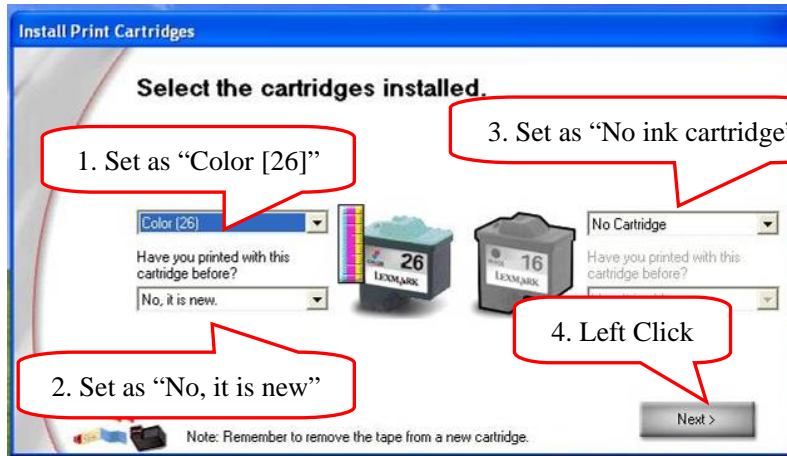
- 2) Click "install"



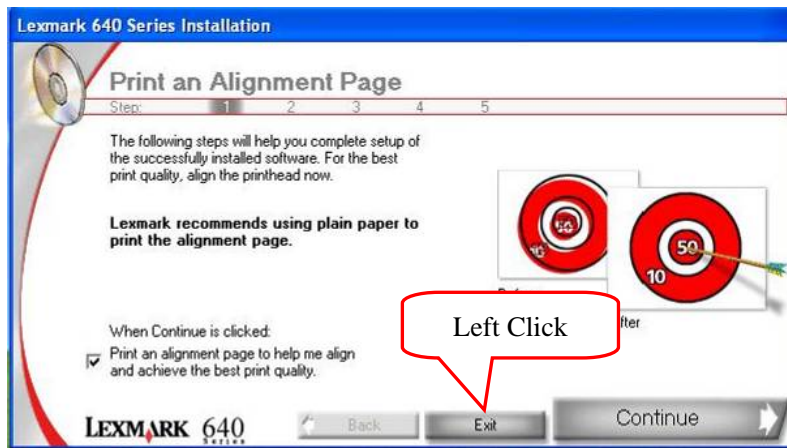
- 3) Click "Install"



- 4) Set the left ink cartridge as: "Color [26]", "No, it is new"; set the right ink cartridge as: "No ink cartridge". Then click "Next".



5) Click "Exit"

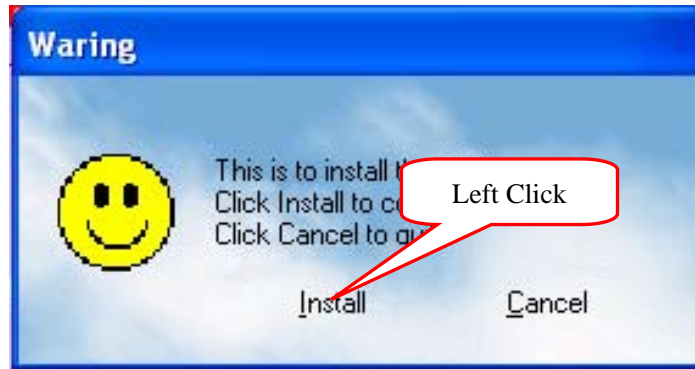


2.4 Install Talking Flowers gallery

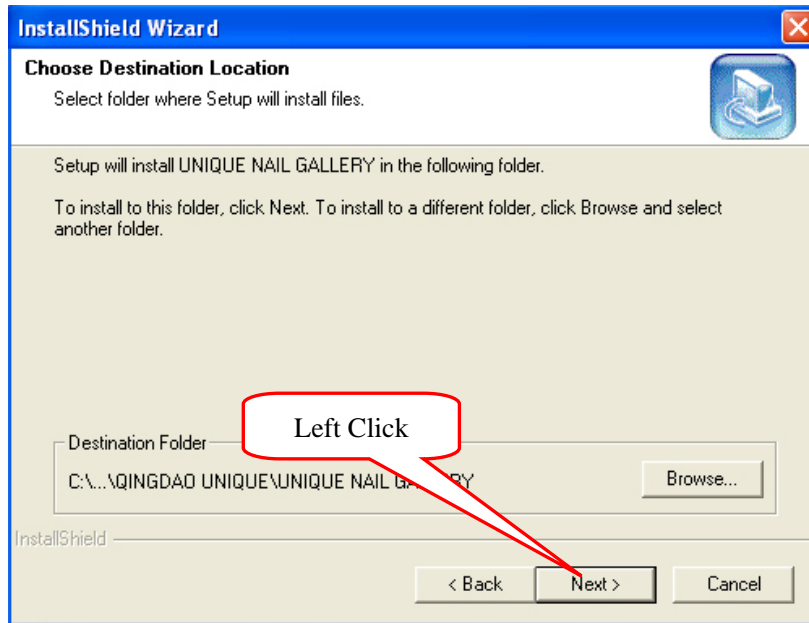
1) Click "Gallery"



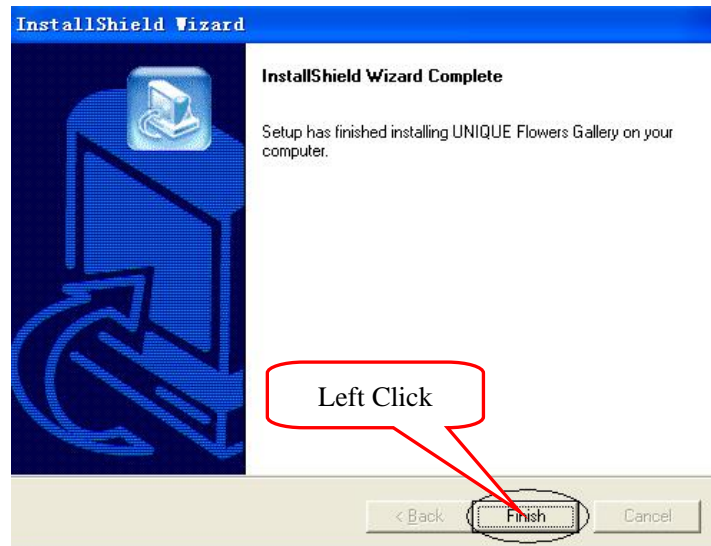
2) Click "Install"



3) Click "Next"



4) Click "Finish"

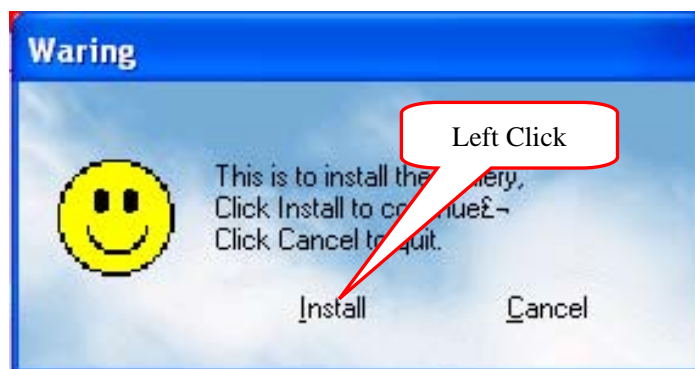


2.5 Install Talking Flowers software

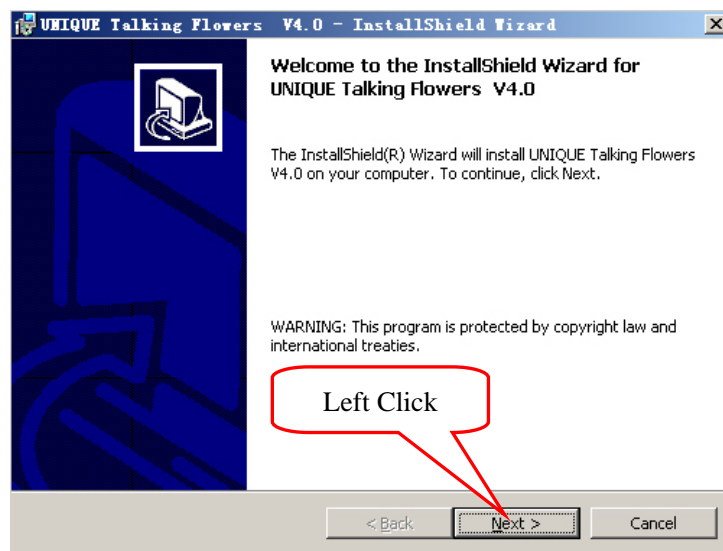
1) Click "Software"



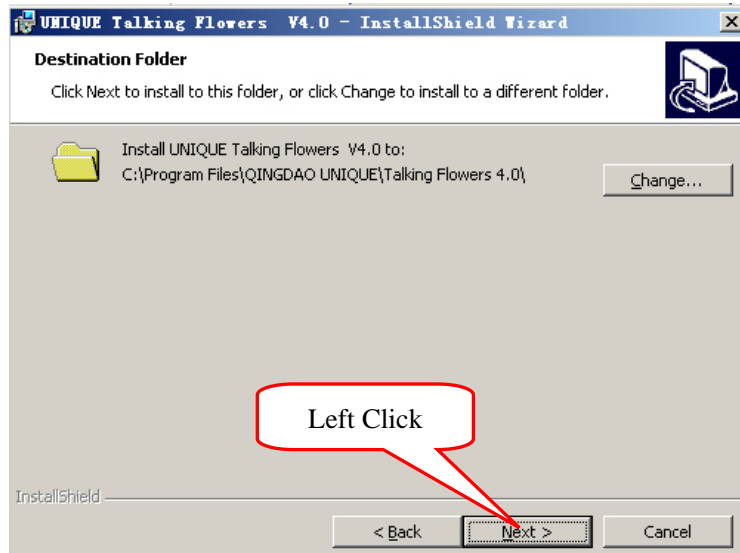
2) Click "Install"



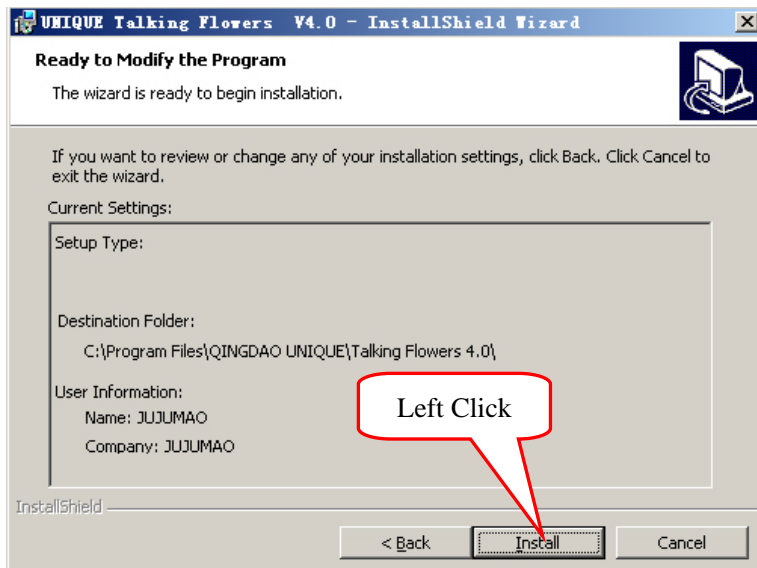
3) Click "Next"



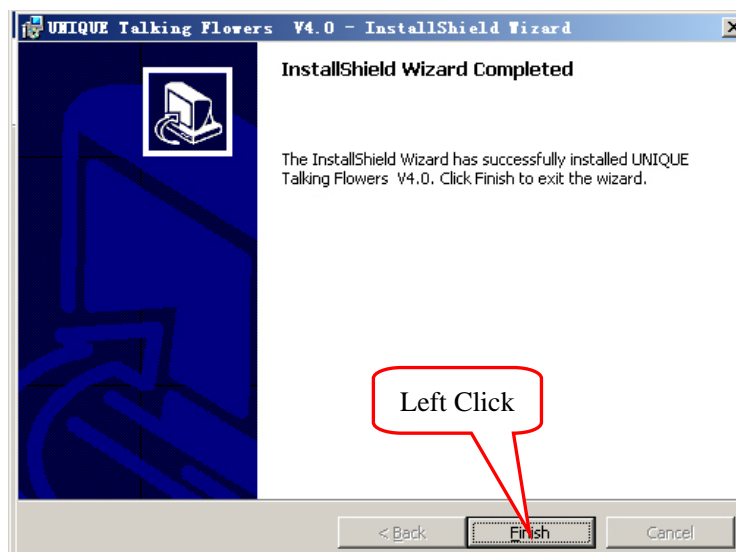
4) Click "Next"



5) Click "Install"



6) Click "Finish"



2.6 Close installation interface

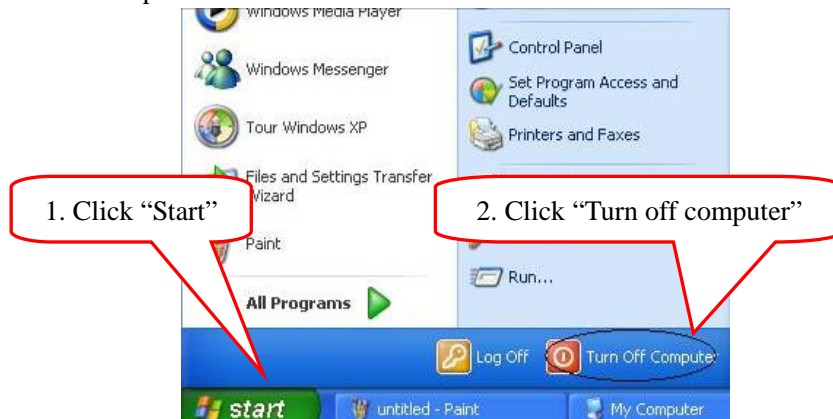
- 1) Click “Exit”



- 2) Take out the CD.

2.7 Restart computer

- 1) Click “Turn off computer ” in start menu



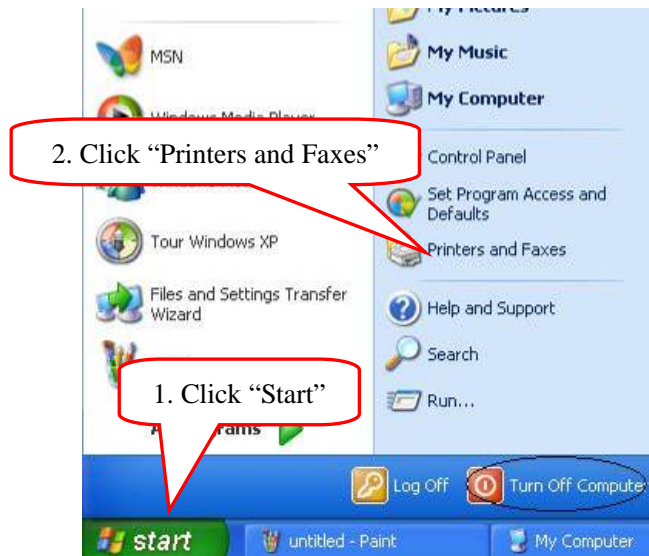
- 2) Click “Restart”



- 3) Computer restarted

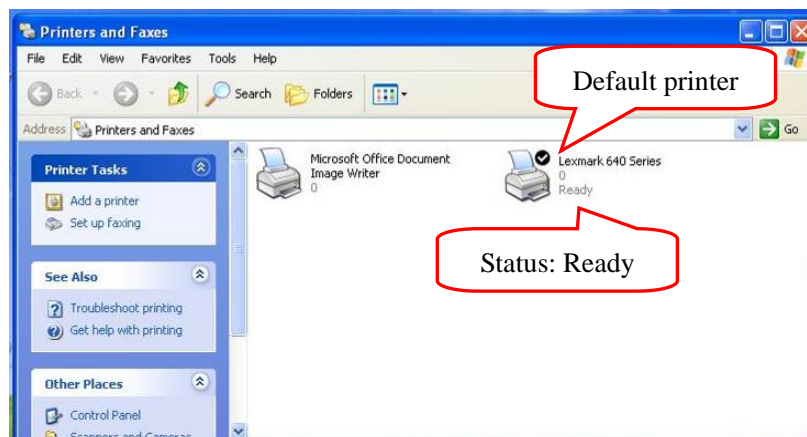
2.8 Printer setting

- 1) Click “Start”, open “Printers and Faxes”

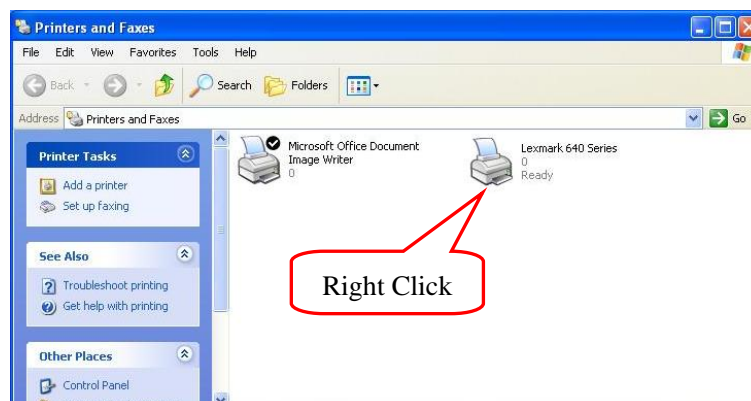


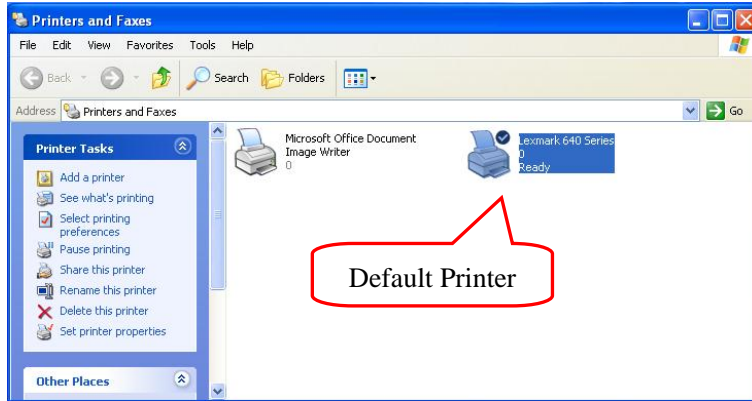
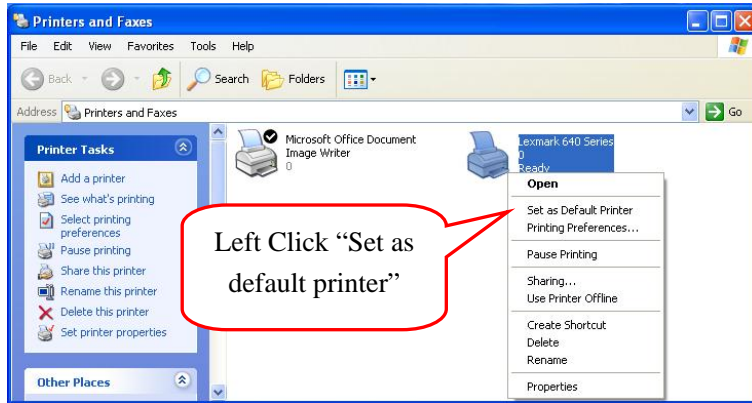
- 2) Set default printer

- a) If the “Lexmark 640 Series” is ready and already the default printer, please go next step



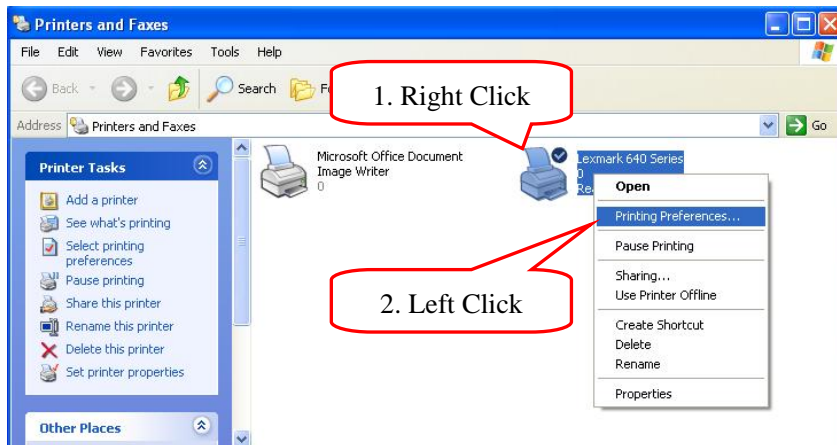
- b) If you have many printers in your computer and the default printer is not “Lexmark 640 Series”, please set it as default printer.



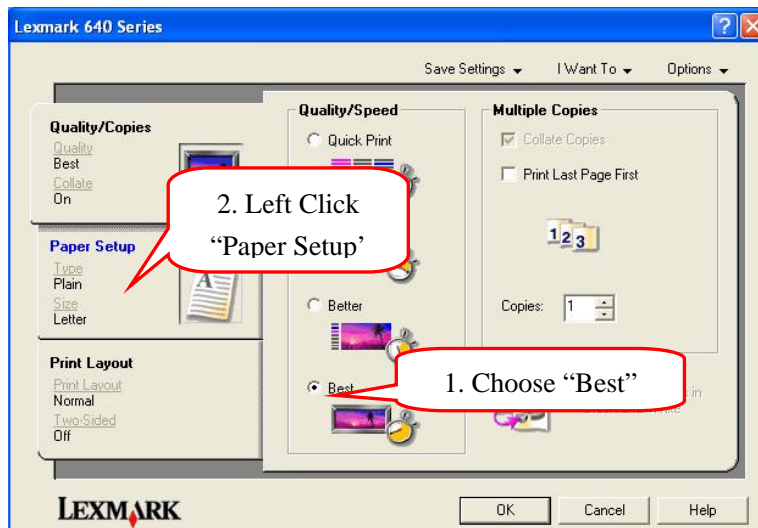


3) Set printing preference

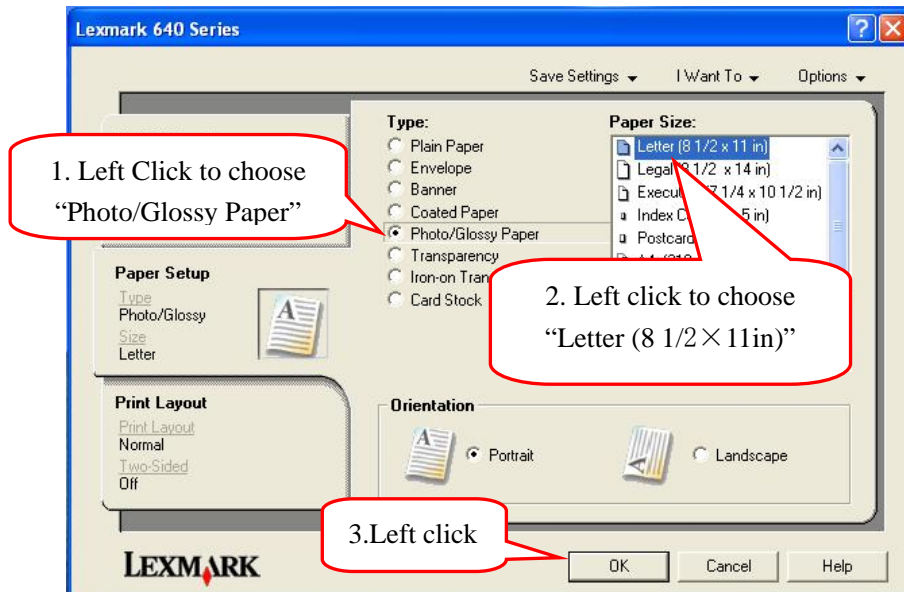
- a) Right click printer icon, choose "Printing Preference"



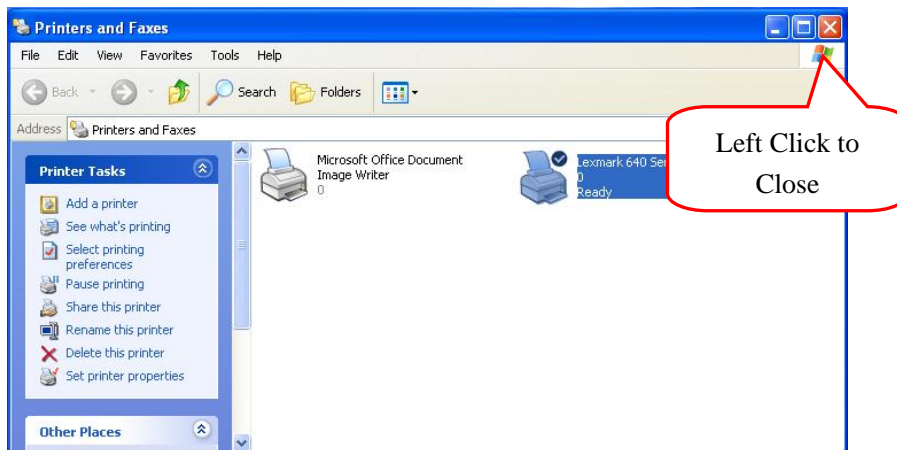
- b) Set "Quality/Speed" as "Best"



- c) Set “Paper Setup” as “Photo Glossy Paper”, set “Paper Size” as “Letter (8 1/2×11in)”,end click “OK” to close the window to save the change



- 4) Close printer window.

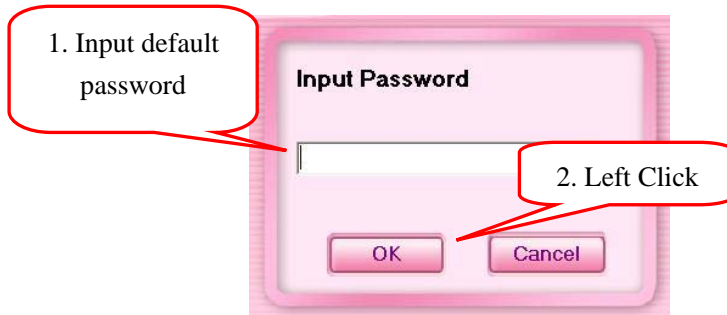


2.9 Set Talking Flowers Program

- 1) Double click Talking Flowers icon  on desktop.



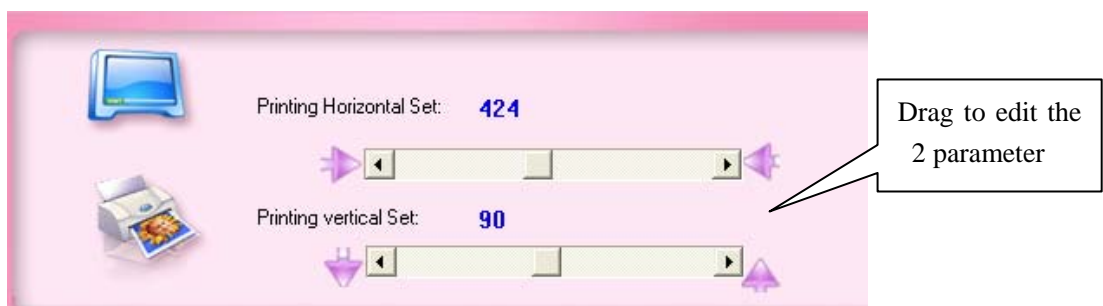
- 2) Click “Configuration”, input password (default password: 123), then click “OK”. You can check printing record ,change password ,and contact us.



- 3) Take off the wide board. Record the parameter on the back of wide board



- 4) Set “Printer Horizontal Set” and “Printer Vertical Set” according to the “Printer X” and “Printer Y” on the wide board. (“Printer Horizontal Set” same to the “Printer X”, “Printer Vertical Set” same to the “Printer Y”)



III. Usage



: Default images bank



: Custom images, personalized images (BMP, JPG format only)



: Word edit



: Picture edit



: Set the parameters of camera and printer, language change, password change, check printing record



: Exit program



: Original



: Print



: Delete

3.1 Choose images from default gallery

- 1) Click "Gallery"



- 2) Click left buttons to choose the classes, and then choose your favorite images from right, you can choose more than one images at one time. Click “Back” to exit the window when finish choosing.





3.2 Adjusting images and printing

- 1) Click chosen image, you will see from the video, see below picture.





2) Adjust images

a) Adjust angle of images

- i.  : 90° anticlockwise
- ii.  : 90° deasil

b) Adjust the size and position of the images


- i.  : Set the image to original size and position
- ii. Adjust size and position of images by mouse
Drag left top of the image to adjust the size, drag right bottom of image to adjust position
- iii. Adjust images by buttons.

 : Enlarge


 : Reduce


 : Turn left


 : Turn right


 : turn up


 : Turn down

 : Increase the height

 : Increase the width




 : Reduce the height

 : Reduce the width

3) Click “” to start printing when finish adjusting

3.3 Preview or delete selected images

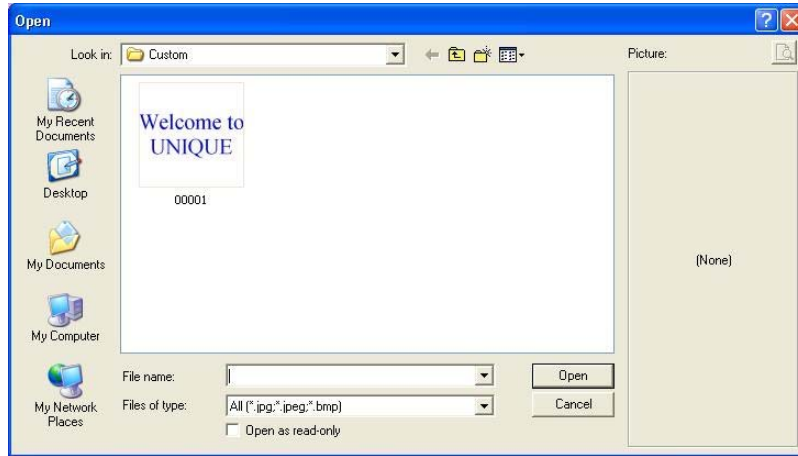


- 1) If the selected images more than 4, please click “” “” to preview
- 2) Delete selected images
 - a) Right click the images you want to delete
 - b) Left click the images you want to delete, then click “”

3.4 Custom images

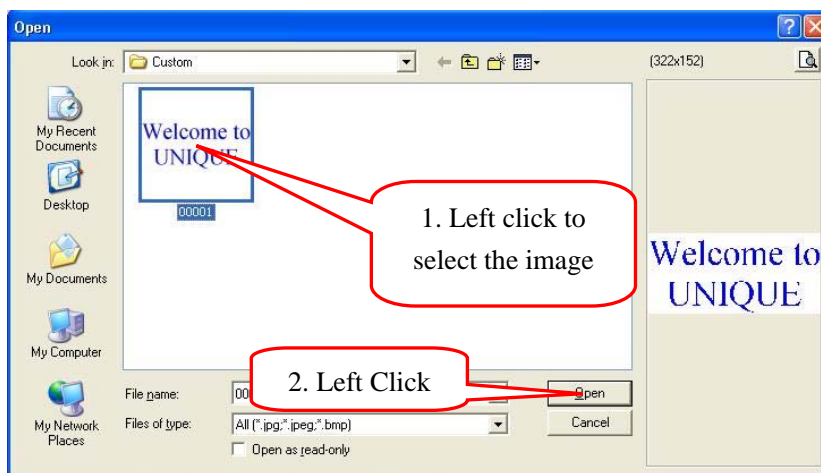
- 1) Click “Custom”



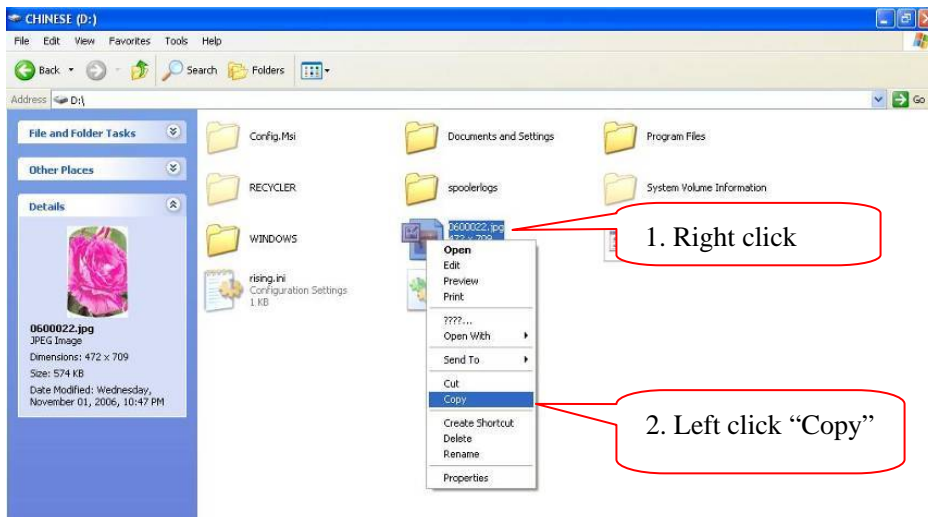


2) Custom images

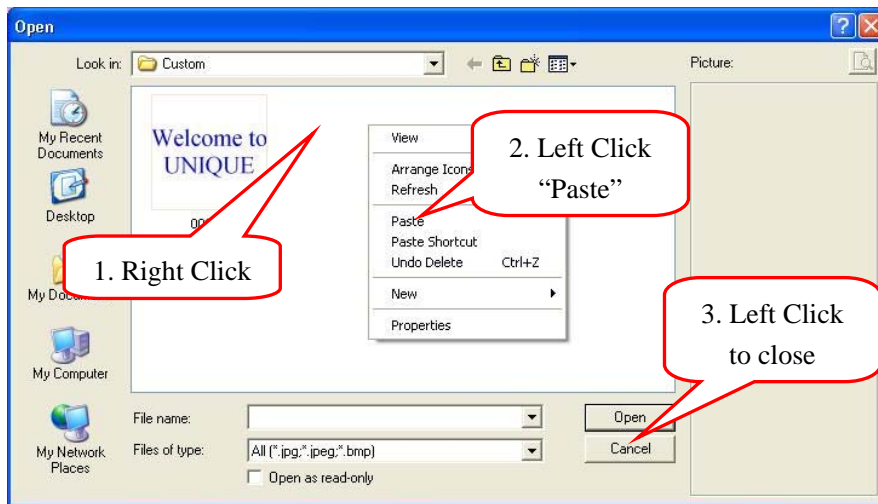
- a) Open images in the “Custom” folder
 Select images, and then click “Open”



- b) Put other images into custom gallery:
 1) Select images that you like in you computer



- 2) Right click blank area of the dialogue, choose “Paste”, then the custom images will be saved, click “Cancel” to exit the dialogue.



3.5 Word Edit

- 1) Click "Word Edit"



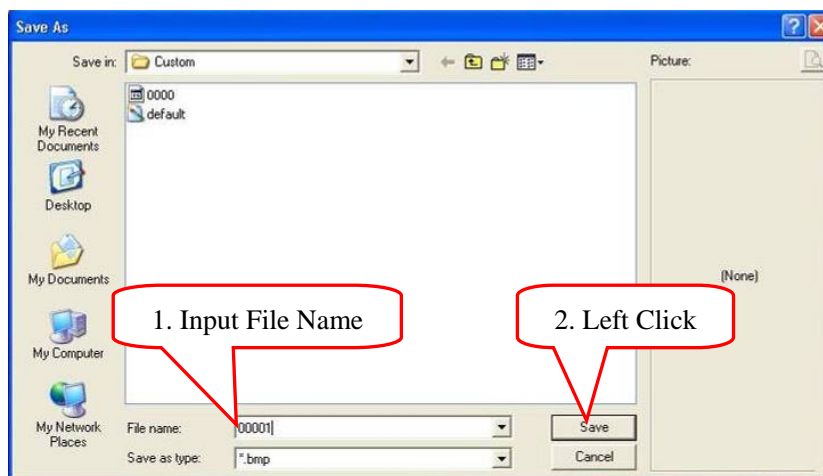
- 2) The top blank area for previewing, bottom blank area for editing, input your personalized words from here.



3) Edit the font and color, and then click "Preview" to preview.:



4) Click "Add and Save", input file name, then click "Save".



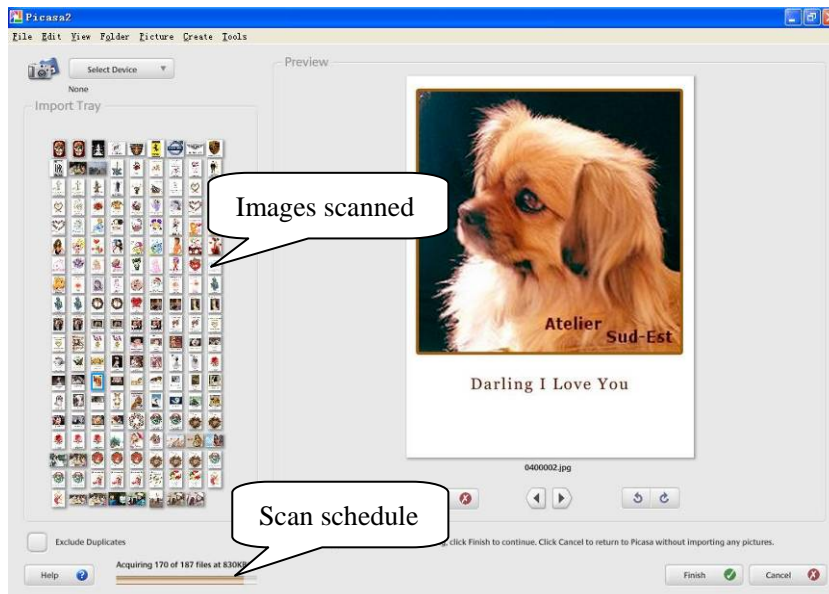


3.6 Picture Edit

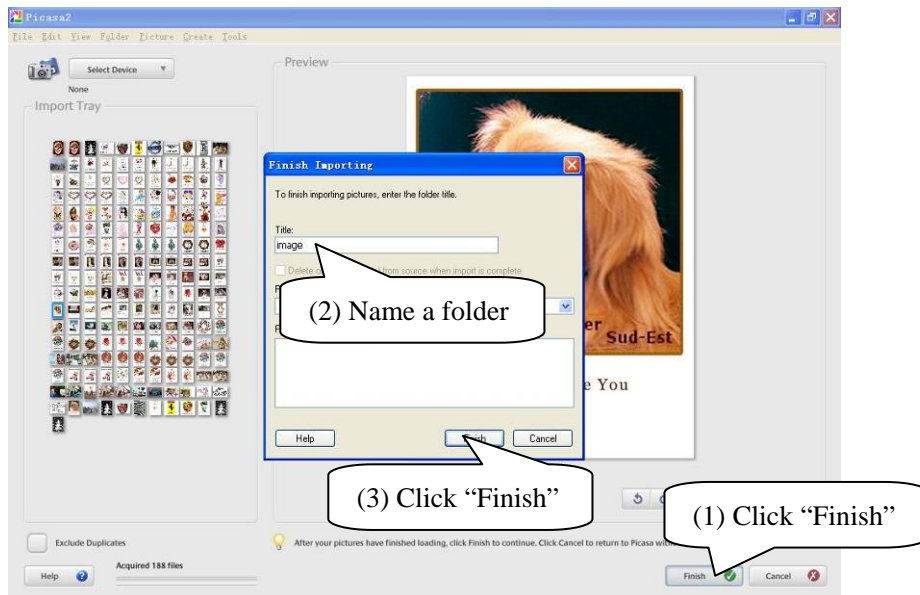
Note:1. We provide a smart and small software for you to edit pictures in the gallery. In this function you can perfect your picture such as Crop, Straighten, reduce redeye, auto contrast, auto color, and append some especially good effect and so on.

- Description in brief

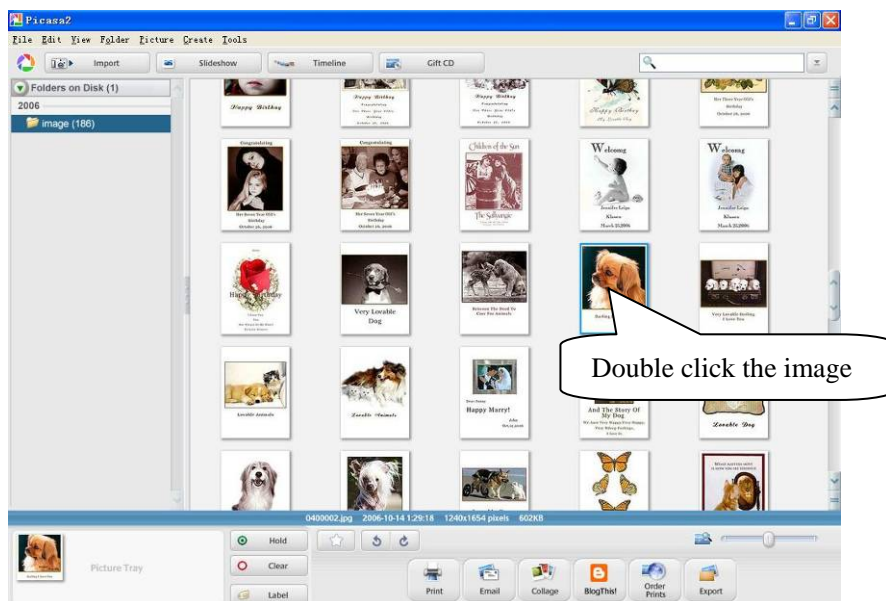
- 1) Click “Picture Edit” to start picasa2, a smart picture edit software. The first time picasa2 start it will scan images in the custom.



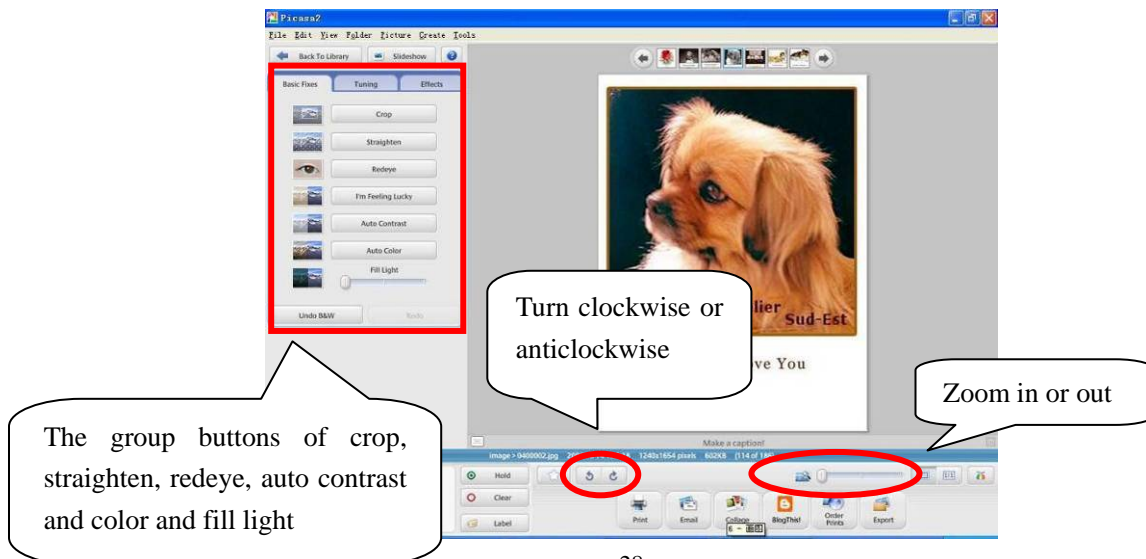
- 2) After scanning, click “Finish” button and name a folder to save the images scanned.



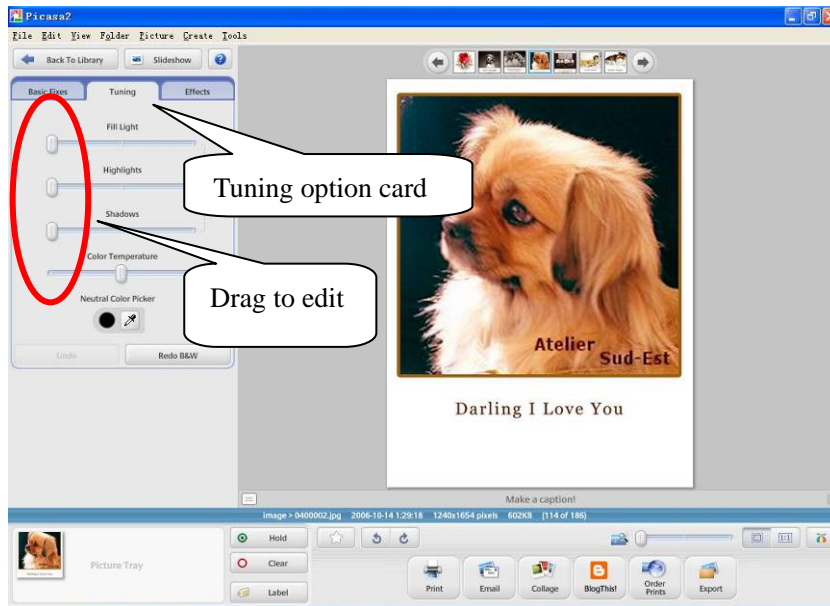
3) Double click the image you want to edit



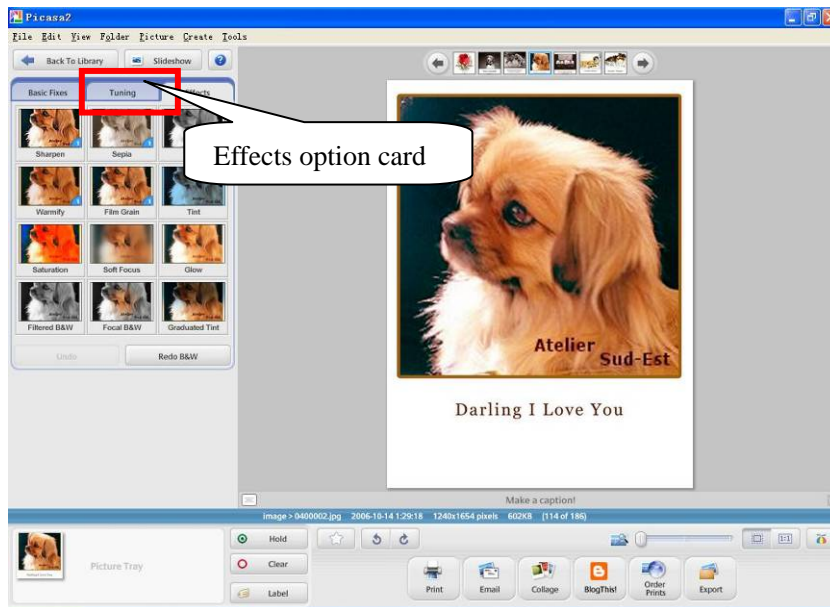
4) Double click an image you want to edit and then the following interface will jump into your eyeshot. In this interface you can crop, straighten, reduce redevye, auto contrast and color and fill light by the left buttons. By the bottom button, turn clockwise or anticlockwise and zoom in or out can be actualized.



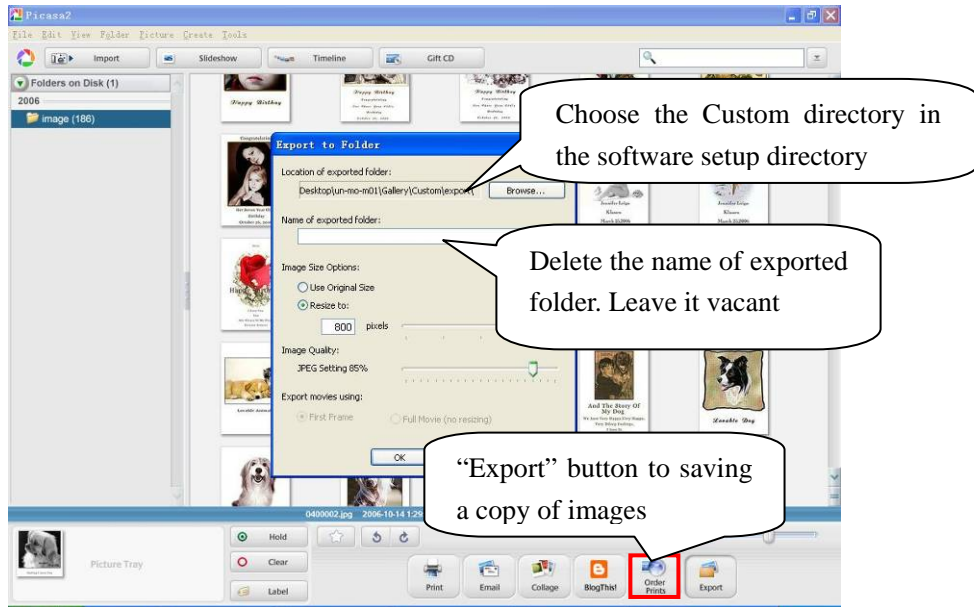
- 5) Click the second option card—Tuning and Fill Light, Highlights, Shadows, Color Temperature are able to be actualized by drag the scroll bars.



- 6) Click the third option card—Effects, Sharpen, Sepia, Warm, film grain and so on effects are able to be actualized by click corresponding images.



- 7) After perfect your images, “Export” button is able to be used as saving a copy of images that you have just perfect. Choose the Custom directory in the software setup directory and then delete the name of exported folder.



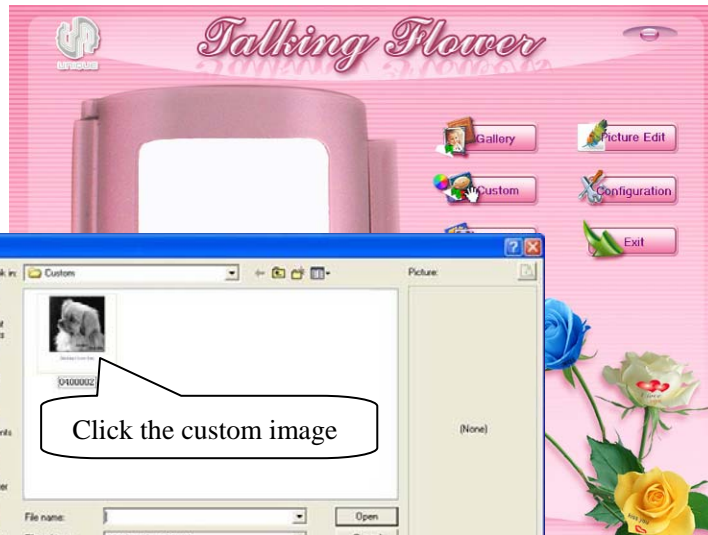
8) Then you can exit picasa2, back to software main interface. Click the custom button.



9) Find the export folder, which is be used as the output folder of the picture edit, and click it to open the folder.



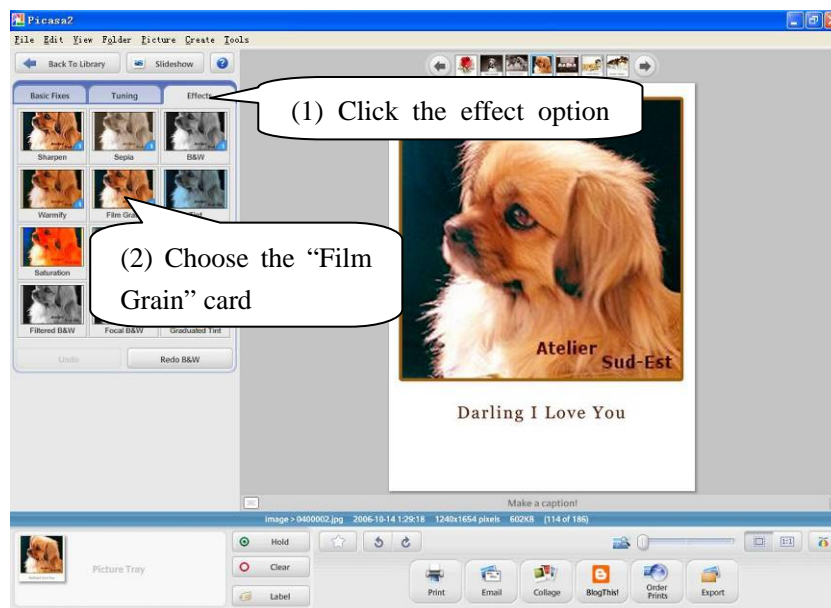
10) Click the image you just export.



11) The image w

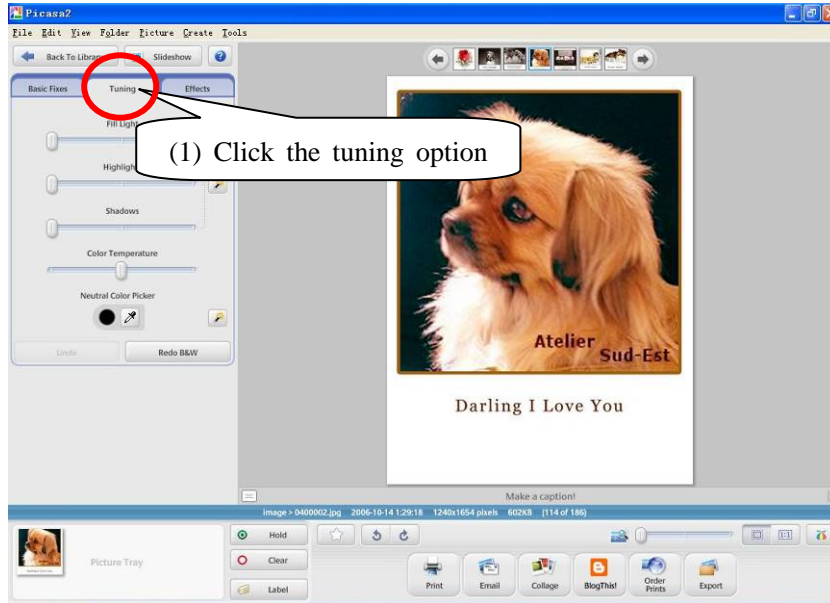


- Brighten own image
- 1) The first three steps of Brighten the own image is the same as the [brief instruction](#) 1 to 3.
 - 2) Choose the effect card. Many experiments have been done, and the Film Grain is the best one, so we commend the Film Grain effect.

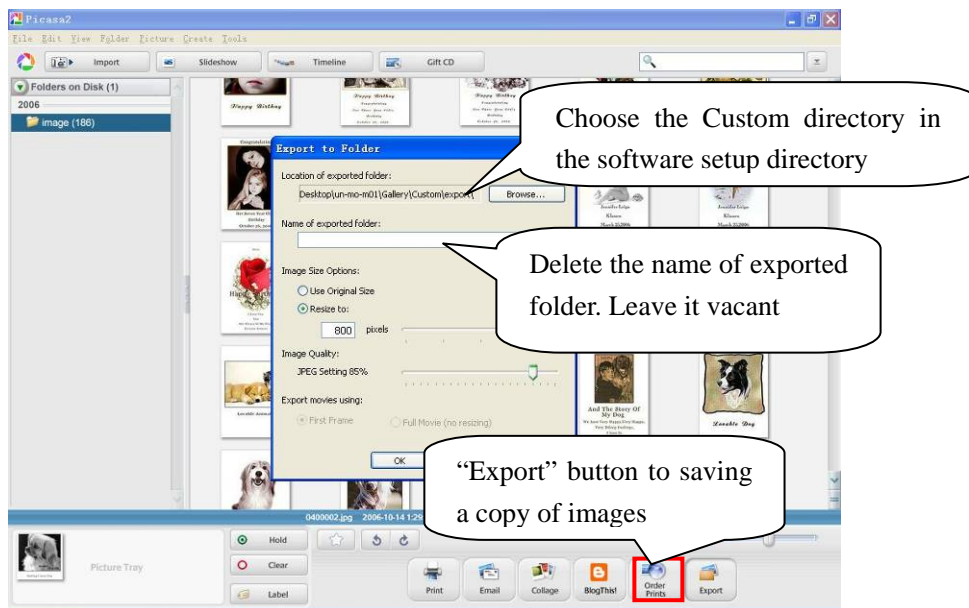


Note: If the effect is not satisfying, you can also superpose multi-effect by choose more than one.

- 3) You can also brighten the image by yourself. Drag right the “Fill Light” scroll bar to increase lightness of the image.



- 4) After perfect your images, “Export” button is able to be used as saving a copy of images that you have just perfect. Choose the Custom directory in the software setup directory and then delete the name of exported folder.



- 5) Then you can exit picasa2, back to software main interface. Click the custom button.



- 6) Find the export folder, which is be used as the output folder of the picture edit, and click it to open the folder.



- 7) Click the image you just export.



- 8) The image would be on the preview area.



Note: If there is Adobe Photoshop in your computer, and you are skilled in edit pictures by Photoshop, you can also perfect your images using Photoshop in your computer.

Note: We provide smart and small software for you to edit pictures. In this function you can perfect your picture such as Crop, Straighten, reduce redevye, auto contrast, auto color, append some especially good effect and so on. If there is Adobe Photoshop, by which you can edit images for more infectious, in your computer and you are skilled in edit pictures by Photoshop, you can also perfect your images using Photoshop.

3.7 Printing

- 1) Dip the brush into the pre coat.



- 2) Please scrap the brush to avoid too much pre coat on it.



3) Brush the pre coat on the petal equably

Attention:

- ✧ Brush on the petal gently and along the same direction.
- ✧ The quality of petal and equality of pre coat will influence the printing quality.

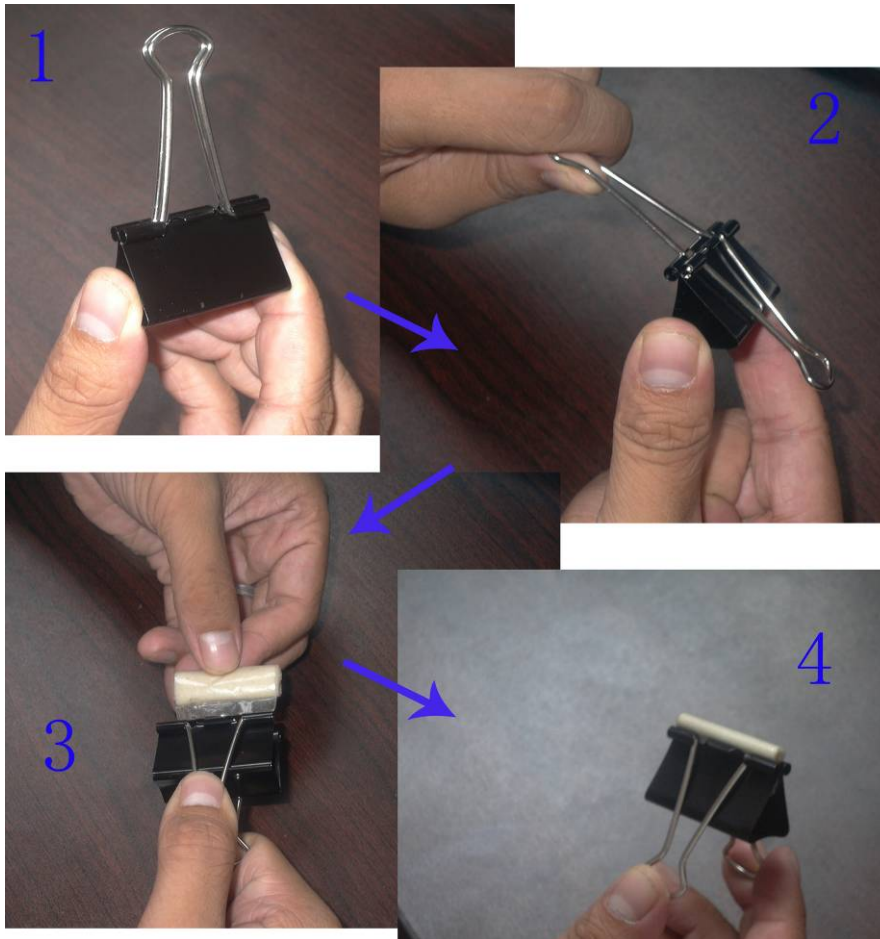


4) Please make the pre coat evenly, using the sponge we specially provided.

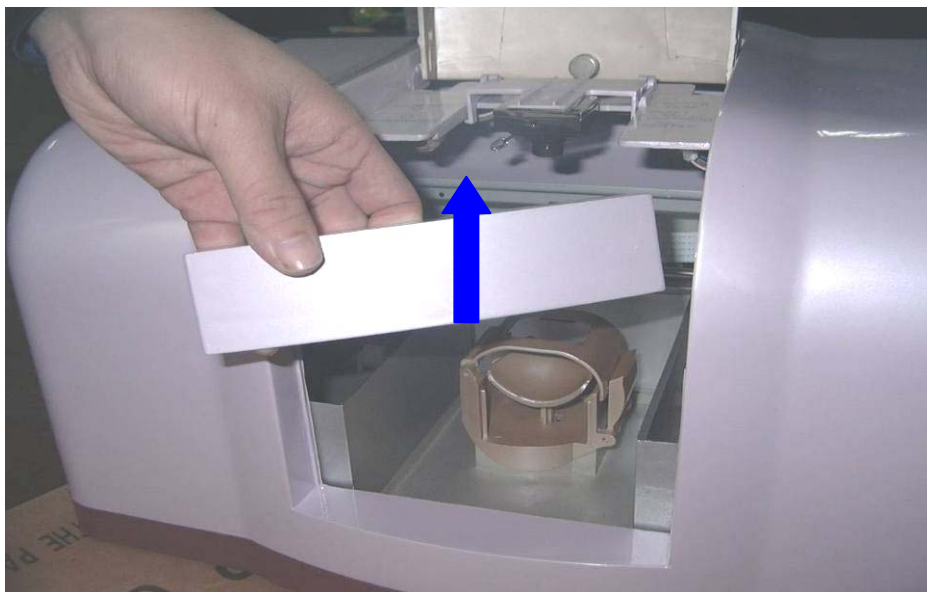


Attention: The flat of petal surface and equality of pre coat will influence the printing quality.

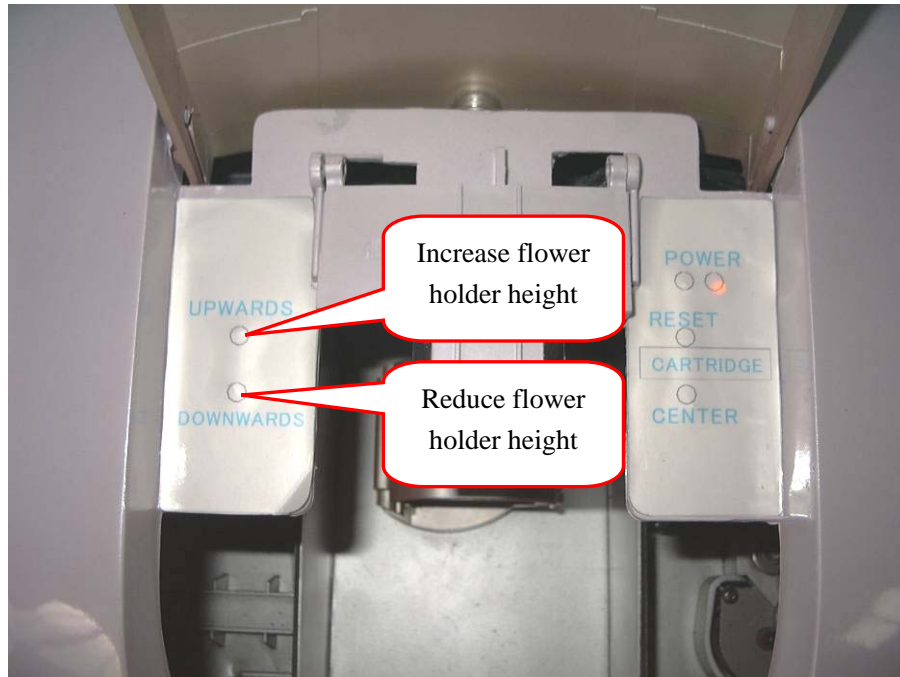
(The usage of special tool is given in the following image)



- 5) Dry the pre coat naturally
 - a) The drying time depends on local temperature and humidity
 - b) The pre coat should be just dryAttention: Don't dry too long time; the dryness degree will influence the printing quality.
- 6) In order to print conveniently, please take off the front wide board



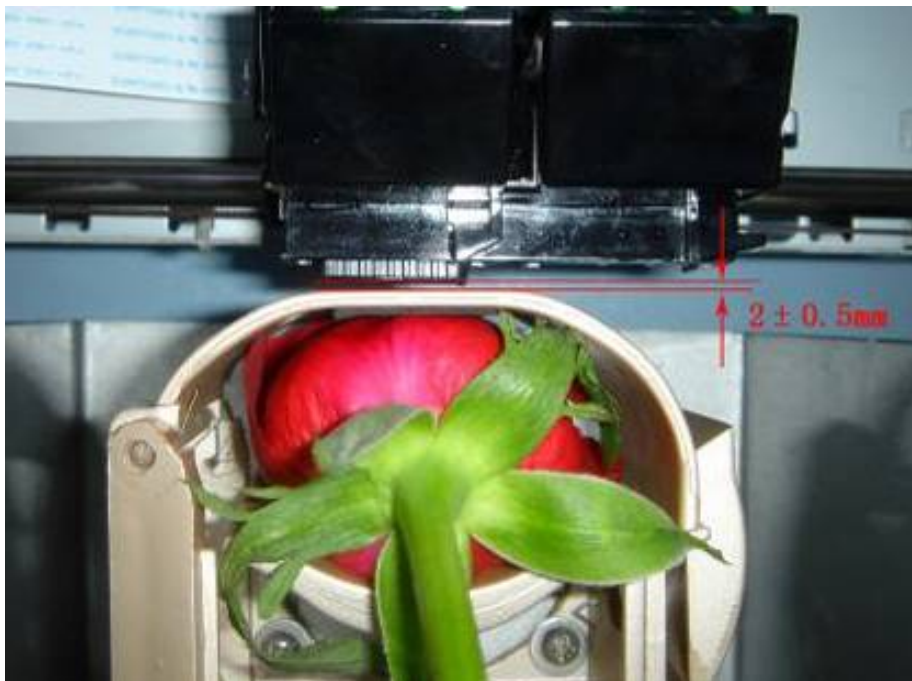
- 7) Press “Downward” to reduce the height of the flower holder.



- 8) Put the flower into flower holder, close the cover and make the petal flat. Press “UPWARDS” to increase the height flower holder, the distance between the top point of the petal and the bottom of the cartridge head is about $2.0 \pm 0.5\text{mm}$. Printing when finish adjusting.

Attention:

- ✧ Don't nip the flower too tight when adjusting the height by “UPWARDS”.
Too tight will lead to: 1. Pre coat will stick to the holder
2. Damage the flower.
- ✧ You should adjust the flower to make the printed petal flat after put the flower into holder.
More flat the petal, much better the printing quality.

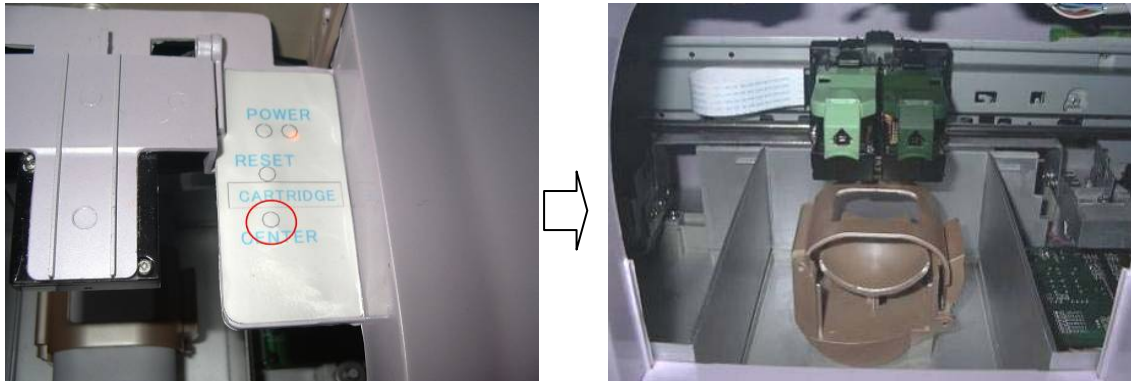


IV. Clean and change ink cartridge

You need cleaning the cartridge if the printing color not good, and change new cartridge if use up.

Please clean and change as follows:

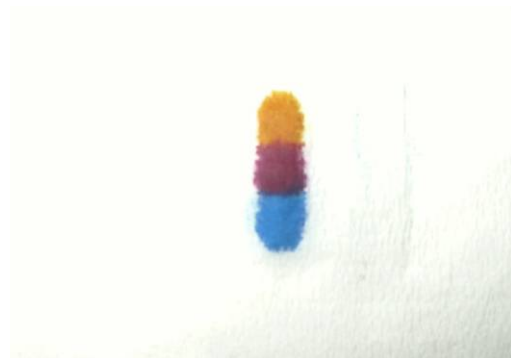
4.1. Press “Center”, the cartridge plate will move to center. Open the lid and take out the cartridge.



4.2. Clean and change ink cartridge

a) Clean ink cartridge

Press cartridge head on napkin strongly until you can see very clear three colors (CMY), then put back the cartridge.



b) Change ink cartridge:

Open the new cartridge and put in the cartridge plate. (Please check “install ink cartridge” under “Install printer driver” for detail procedures).

4.3. Close the cartridge plate lid.

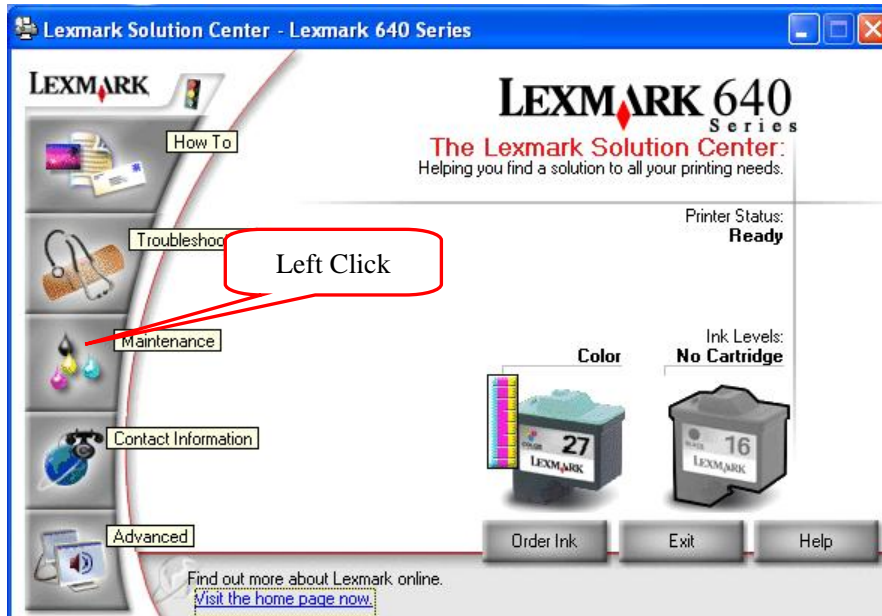


4.4. Press “RESET”, the cartridge plate will back to original place.

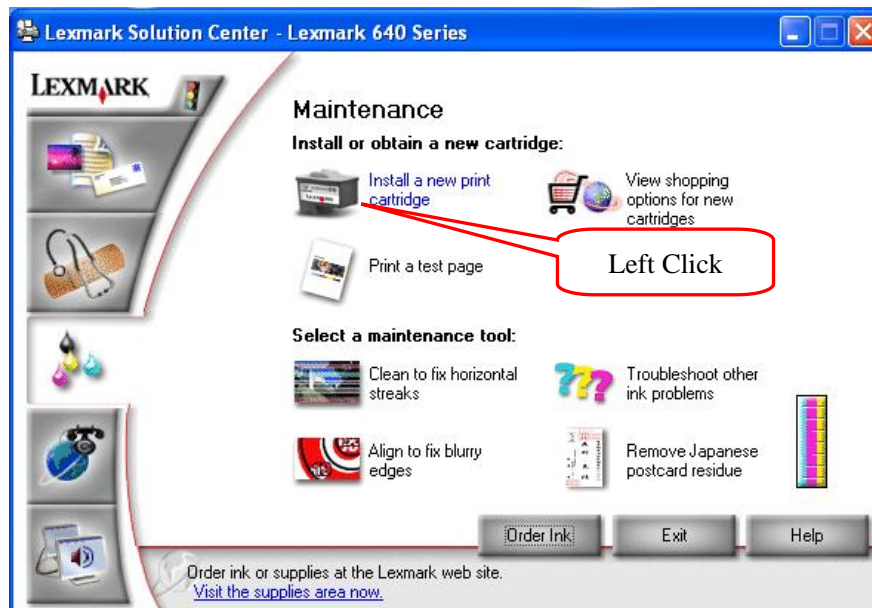


4.5. Update cartridge information in the system.

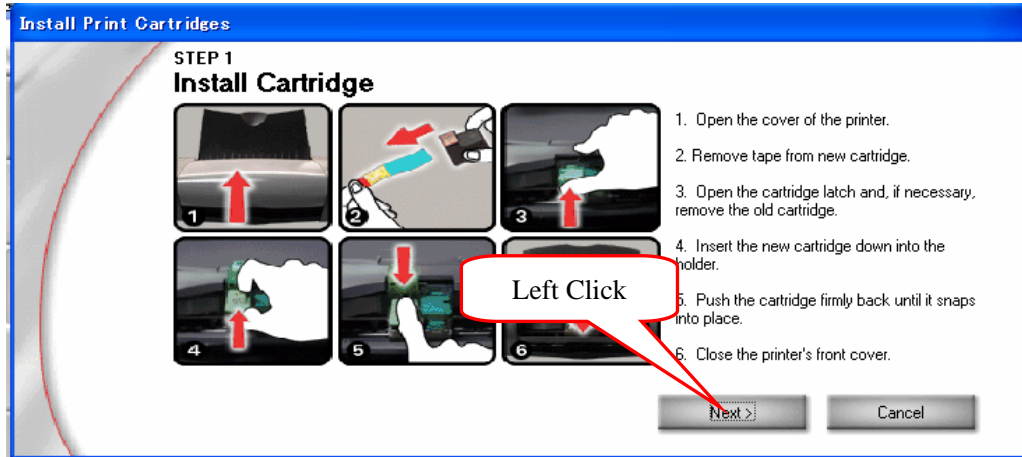
- a) Double click “Lexmark 640 Series solution center”
- b) Click “Maintenance”



- c) Click “Install or obtain a new cartridge”

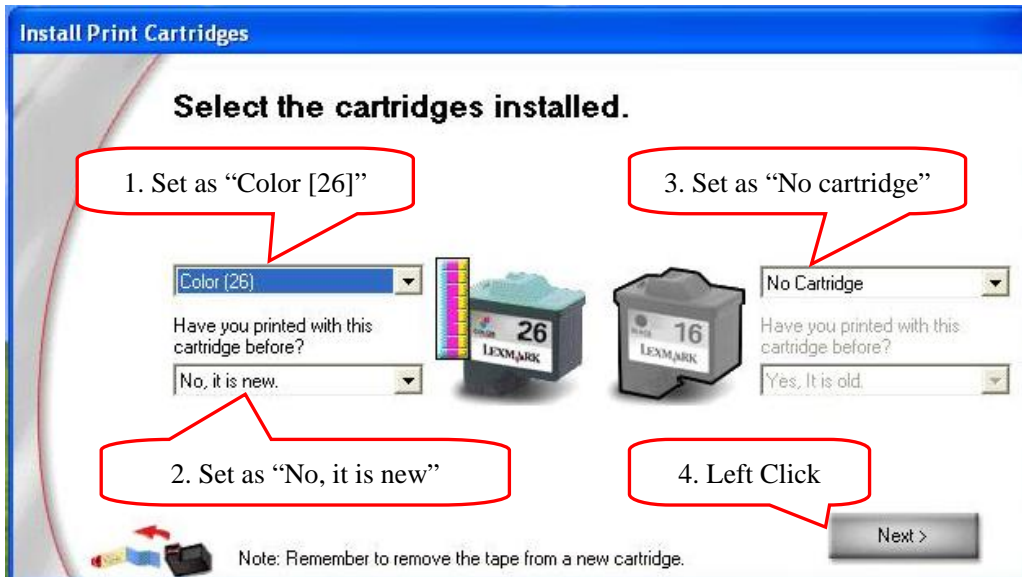


d) Click “Next” to go on.

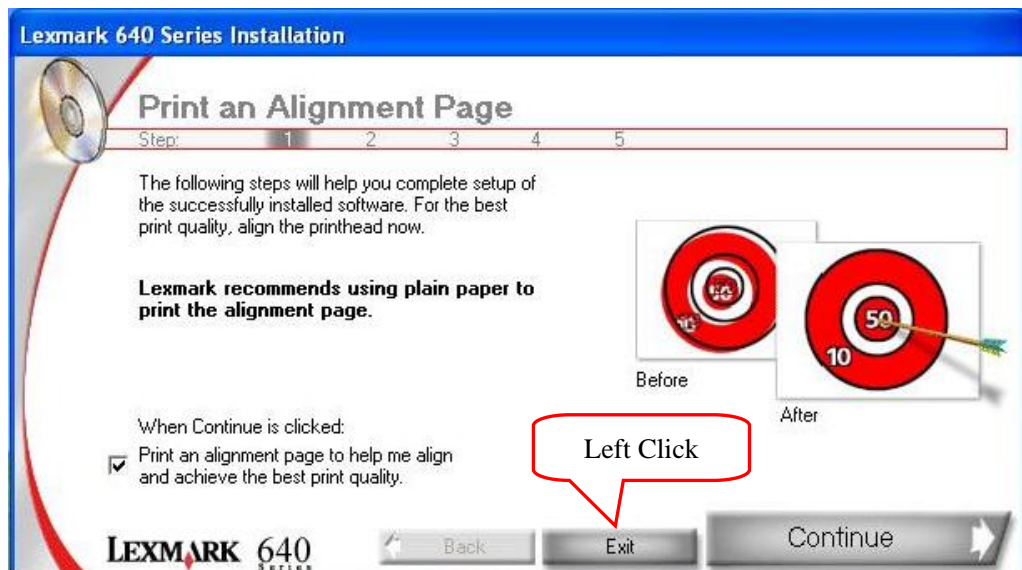


e) Choose the type of the installed cartridge.

f) Set the left cartridge as “Color [26]”, “No, it is new”, set the right cartridge as “No cartridge”, then click “Next”.



g) Click “Exit”.

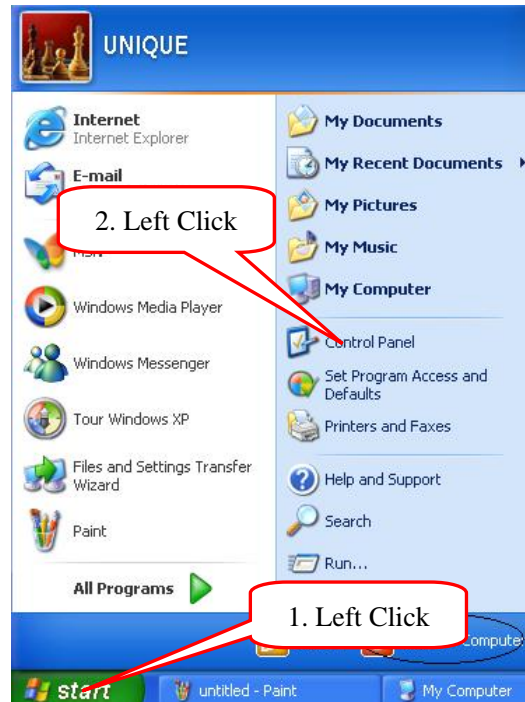


V. Uninstall

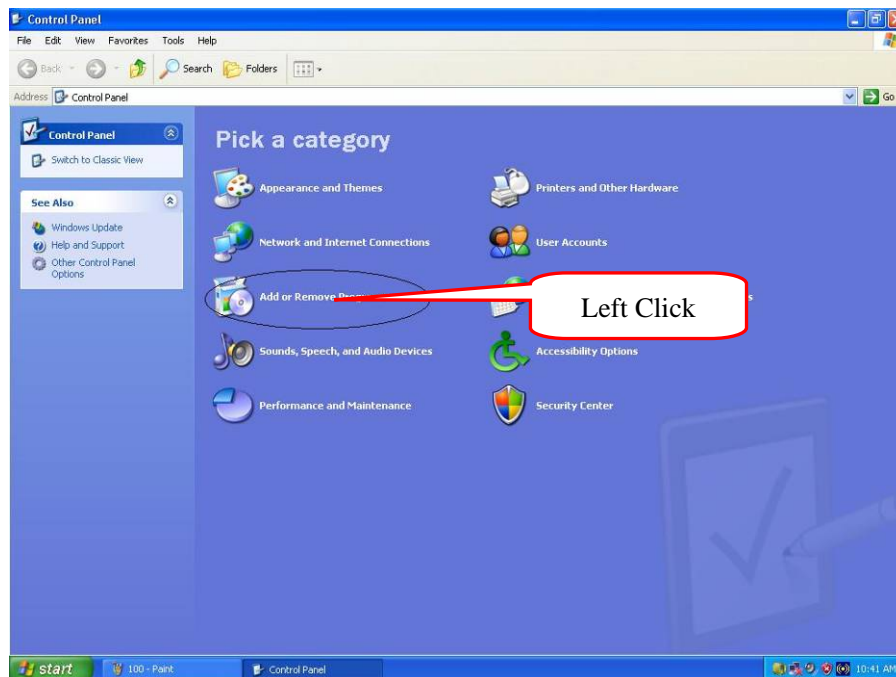
Attention: Please take the camera and printer USB line off the computer before uninstalling.

5.1 Enter “Add or remove programs”

- 1) Click “Control panel” under “Start” menu

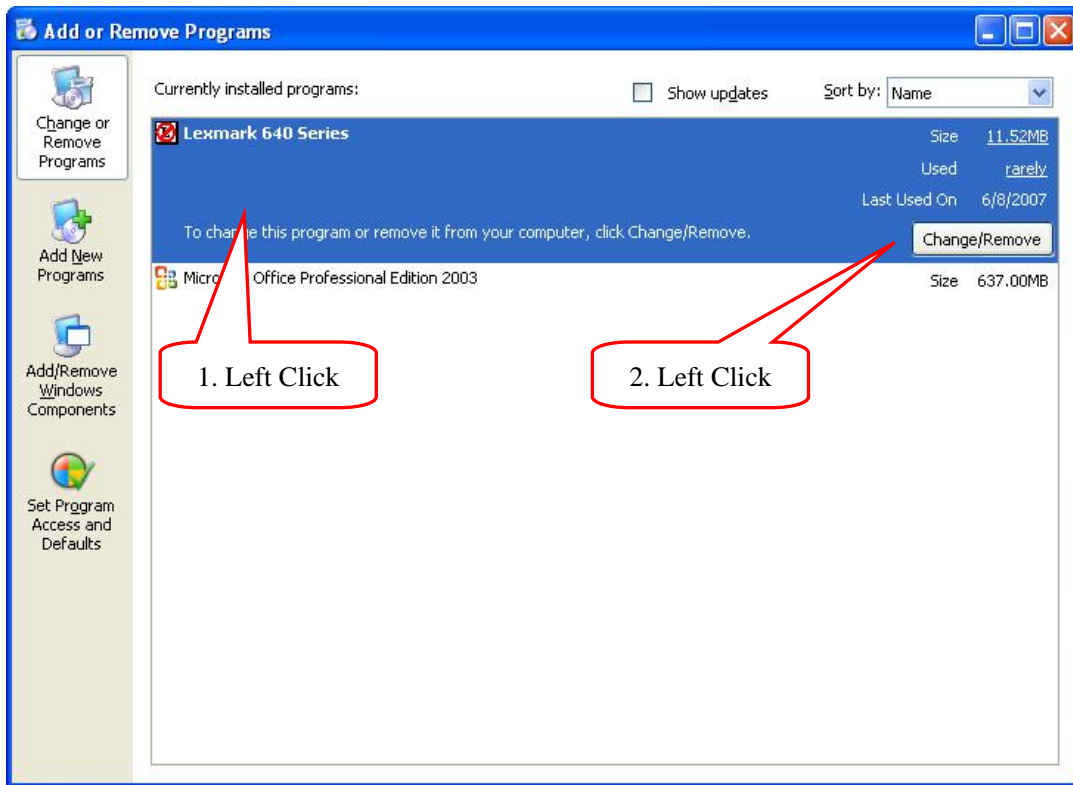


- 2) Click “Add or remove programs”

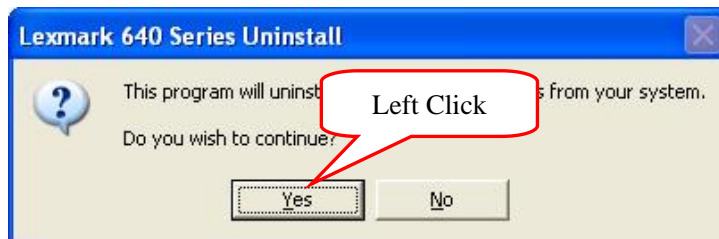


5.2 Delete printer driver

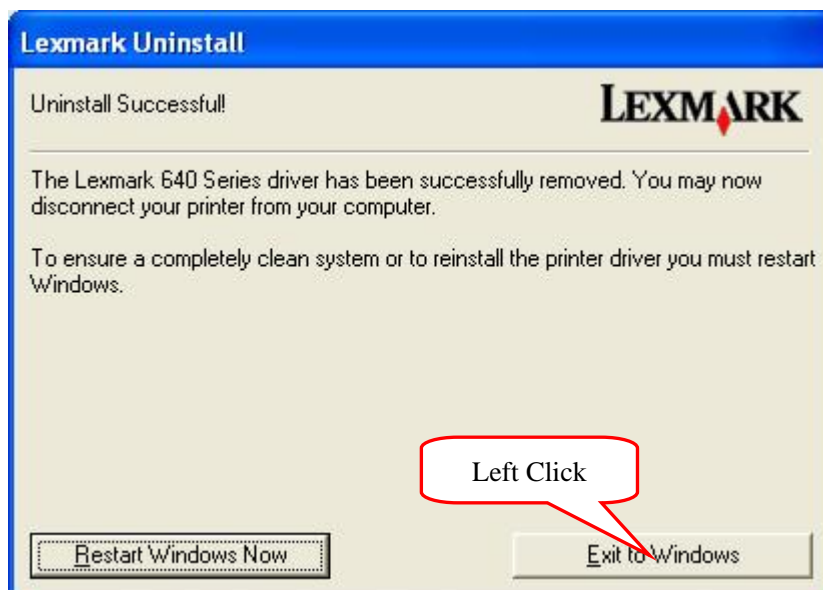
- 1) Click “Lexmark 640 Series”, then click “Change/remove”



- 2) Click “Yes”

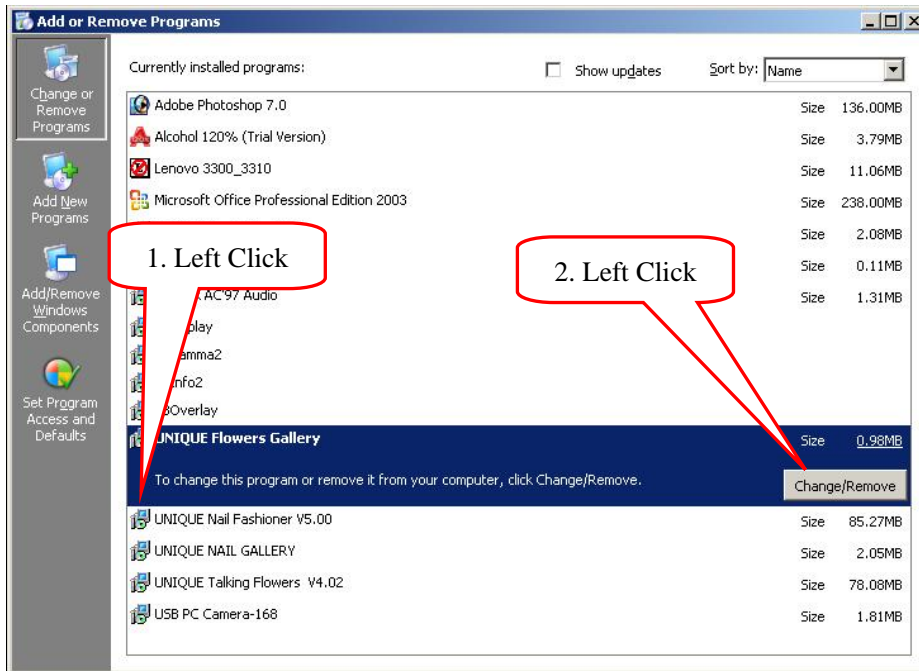


- 3) If go on uninstall, please choose “Exit to Windows”, if only reinstall printer driver, please choose “Restart Windows now”.

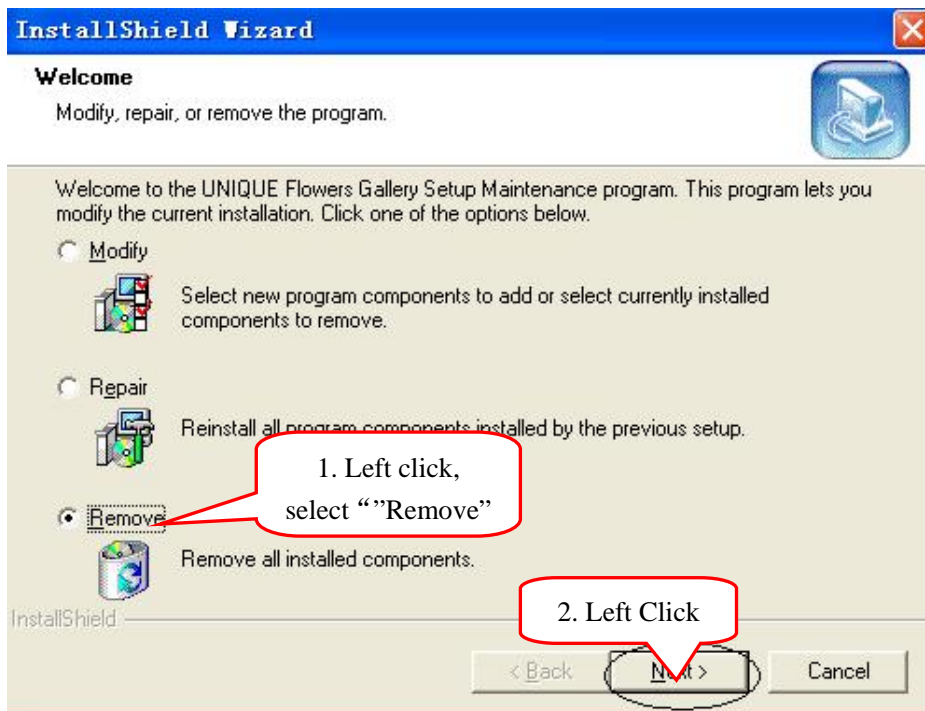


5.3. Delete Talking Flower Gallery

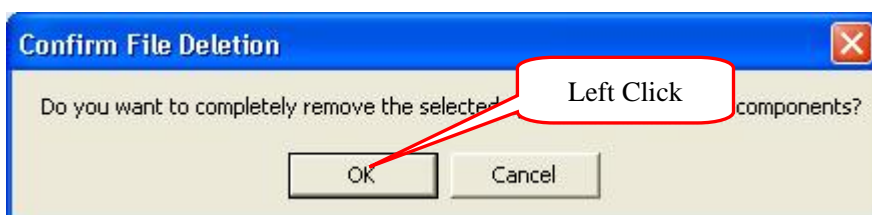
- 1) Click “UNIQUE Flowers Gallery”, then click “Change/Remove”



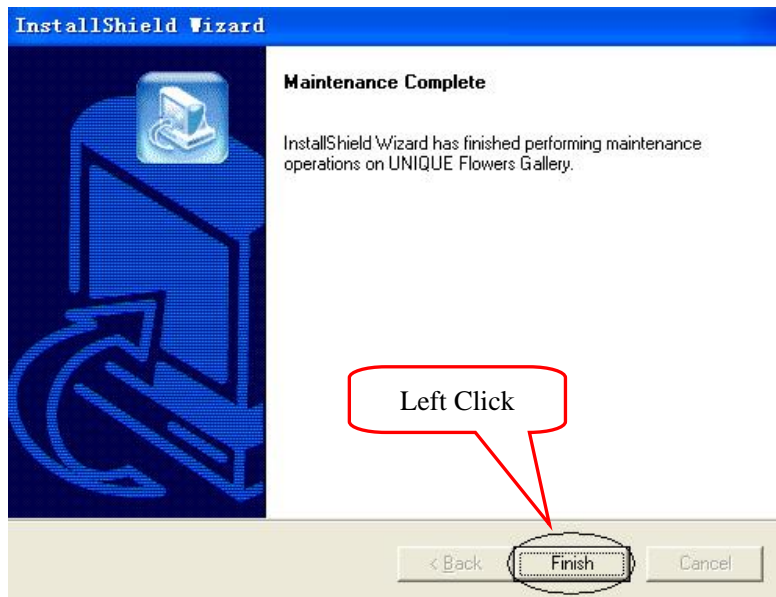
- 2) Select “Remove” and click “Next”.



- 3) Click “OK”

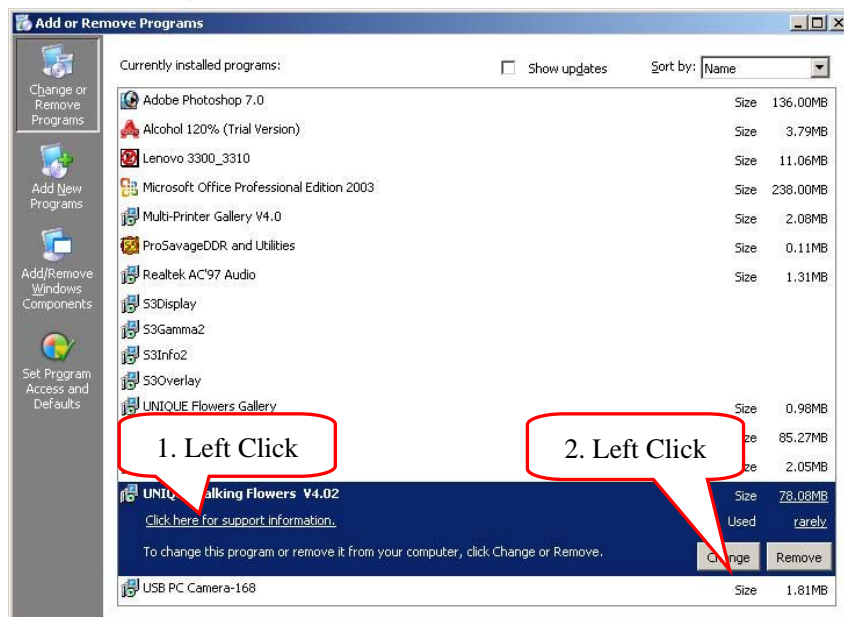


- 4) Click "Finish":



5.4. Delete Talking Flower Program

- 1) Click "UNIQUE Talking Flowers", then click "Remove"



- 2) Click "Yes"

