

# Bluetooth USB Adapter BD-Q382A

## Quick Start Guide :

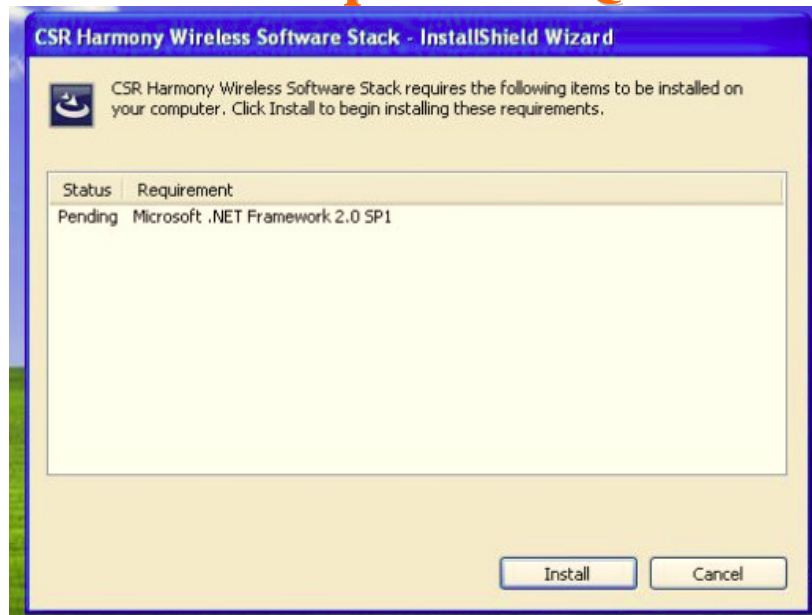
1. Plug BT4.0 USB dongle into a PC or a laptop
2. Install CSR Harmony Stack. (ex: WinXP)
  - i. Insert CSR BT Stack Harmony CD into DVD driver.
  - ii. Run setup.exe.
  - iii. Start installation process.

Select language

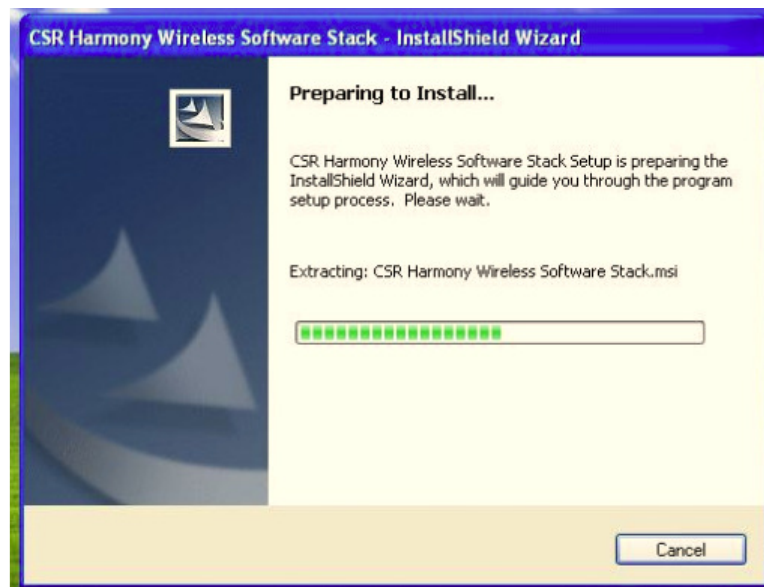


**Install Microsoft .NET Framework**

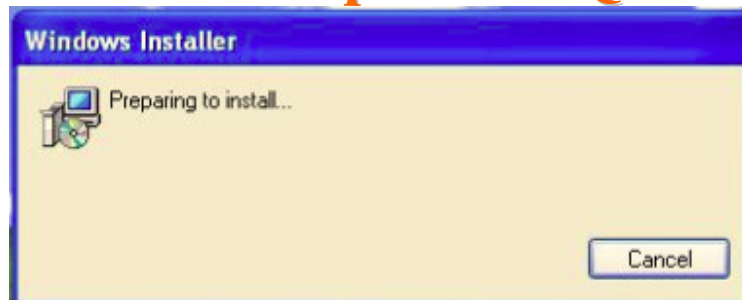
# Bluetooth USB Adapter BD-Q382A



Start to install CSR Harmony Stack



# Bluetooth USB Adapter BD-Q382A



Press Next for continuous setup



Select "I accept the terms in the license agreement"

# Bluetooth USB Adapter BD-Q382A

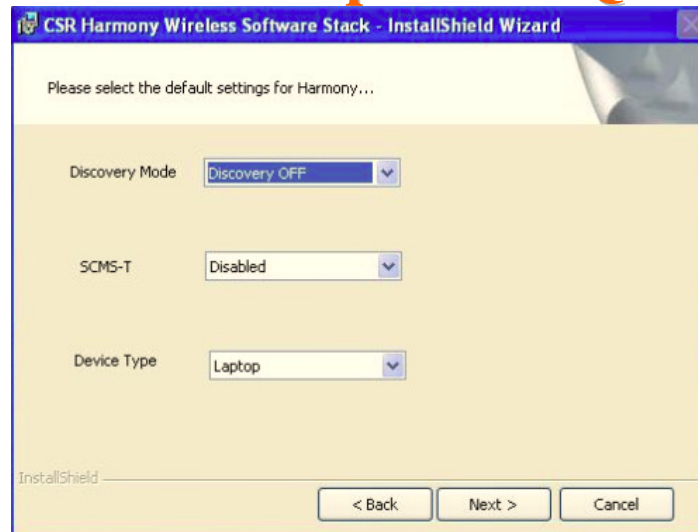


Keep default installation path and press next

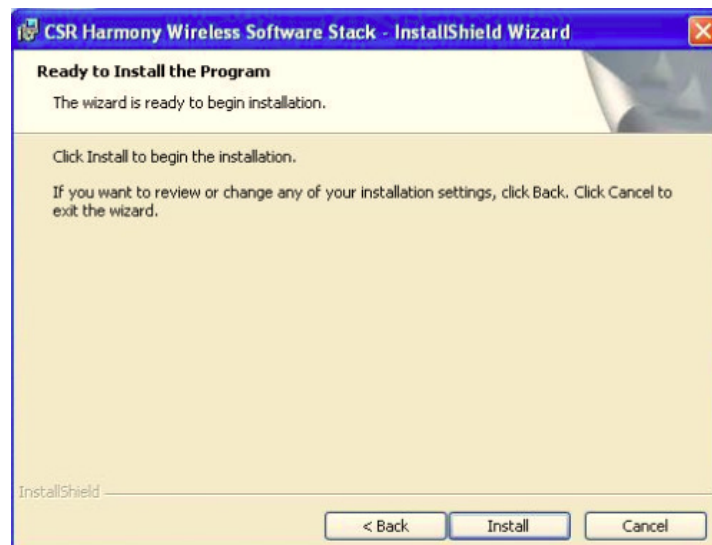


- **Discovery Mode on:** Other BT hosts can find this device.
- **SCMS-T enabled :** Supports SCMS-T copyright music.

# Bluetooth USB Adapter BD-Q382A



**Press Install button to start the installation.**



# Bluetooth USB Adapter BD-Q382A



**Installing Drivers might take few minutes .**

低功率電波輻射性電機管理辦法

第十二條 經型式認證合格之低功率射頻電機，非經許可，公司、商號或使用者均不得擅自變更頻率、加大功率或變更原設計之特性及功能。

第十四條 低功率射頻電機之使用不得影響飛航安全及干擾合法通信；經發現有干擾現象時，應立即停用，並改善至無干擾時方得繼續使用。  
前項合法通信，指依電信法規定作業之無線電通信。低功率射頻電機須忍受合法通信或工業、科學及醫療用電波輻射性電機設備之干擾。

=====

依低功率電波輻射性電機管理辦法規定

經型式認證合格之低功率射頻電機，非經許可，公司、商號或使用者均不得擅自變更頻率、加大功率或變更原設計之特性及功能。

低功率射頻電機之使用不得影響飛航安全及干擾合法通信；經發現有干擾現象時，應立即停用，並改善至無干擾時方得繼續使用。  
前項合法通信，指依電信法規定作業之無線電通信。低功率射頻電機須忍受合法通信或工業、科學及醫療用電波輻射性電機設備之干擾。

# Bluetooth USB Adapter BD-Q382A

FCC ID:WDYQ1040601

## FCC Statement:

This device complies with part 15 of the FCC Rules. Operation is subject to the following two conditions:

- (1) This device may not cause harmful interference, and
- (2) this device must accept any interference received, including interference that may cause undesired operation.

NOTE: This equipment has been tested and found to comply with the limits for a Class B digital device, pursuant to part 15 of the FCC Rules. These limits are designed to provide reasonable protection against harmful interference in a residential installation.

This equipment generates, uses and can radiate radio frequency energy and, if not installed and used in accordance with the instructions, may cause harmful interference to radio communications. However, there is no guarantee that interference will not occur in a particular installation.

If this equipment does cause harmful interference to radio or television reception, which can be determined by turning the equipment off and on, the user is encouraged to try to correct the interference by one or more of the following measures:

- Reorient or relocate the receiving antenna.
- Increase the separation between the equipment and receiver.
- Connect the equipment into an outlet on a circuit different from that to which the receiver is connected.
- Consult the dealer or an experienced radio/TV technician for help.

Changes or modifications not expressly approved by the party responsible for compliance could void the user's authority to operate the equipment.