

# QUAD

## L-ite Centre

Compact Centre Channel Loudspeaker

### L Series

**Immersive Theatre Experience**

Owner's Manual

---

## SERVICE & INFORMATION

Product service enquiries should, in the first instance, be referred to the supplying dealer. If you need to return your loudspeakers for servicing, please return them as a pair, where appropriate, even if only one unit appears to be faulty. For safety, we suggest you ship them in their original packing.

In cases of difficulty or for other product enquiries please contact the appointed QUAD distributor for your country. Service Centres in the UK and North America can be found below.

## QUAD SERVICE CENTRES WORLDWIDE

### U.K.

QUAD Electroacoustics Ltd., IAG House, Sovereign Court, Ermine Business Park, Huntingdon, Cambs PE29 6XU  
Tel: +44 (0)1480 447700 Fax: +44 (0)1480 431767 [www.quad-hifi.co.uk](http://www.quad-hifi.co.uk)

### USA

IAG America, Inc., 15 Walpole Park South, Walpole, MA 02081  
Tel: +1 508 850 3950 Fax: +1 508 850 3905 [www.iagamerica.com](http://www.iagamerica.com)

### AUSTRALIA

IAG Australia Pty. Ltd., 30/398 The Boulevard, Kirrawee, NSW 2234, Australia.  
Tel: +612 9540 2469 Fax: +612 9540 2855 *Email: [iagaus@bigpond.com](mailto:iagaus@bigpond.com)*

### CANADA

Korbon Trading Ltd., 6800 Kitimat Road, Units 19-20, Mississauga, Ontario  
Tel: +1 905 567 1920 Fax: +1 905-567-1929 [www.korbon.com](http://www.korbon.com)

### GERMANY

IAG Germany Ltd., IAG(Deutschland) GmbH Johann-Georg-Halske-Str. 11-41352 Korschenbroich.  
Tel: +49(0)2161-61783-0 Fax: +49(0)2161-61783-50 Email: [info@wharfedale.de](mailto:info@wharfedale.de)

### HONG KONG

Sanecore Limited., Room 2607, 26/F, ING Tower, 308 Des Voeux Road, C., Sheung Wan, Hong Kong.  
Tel: +852 2581 9178 Fax: +852 2581 9717 *Email: [info@sanecore.com](mailto:info@sanecore.com)*

### R.O.C.

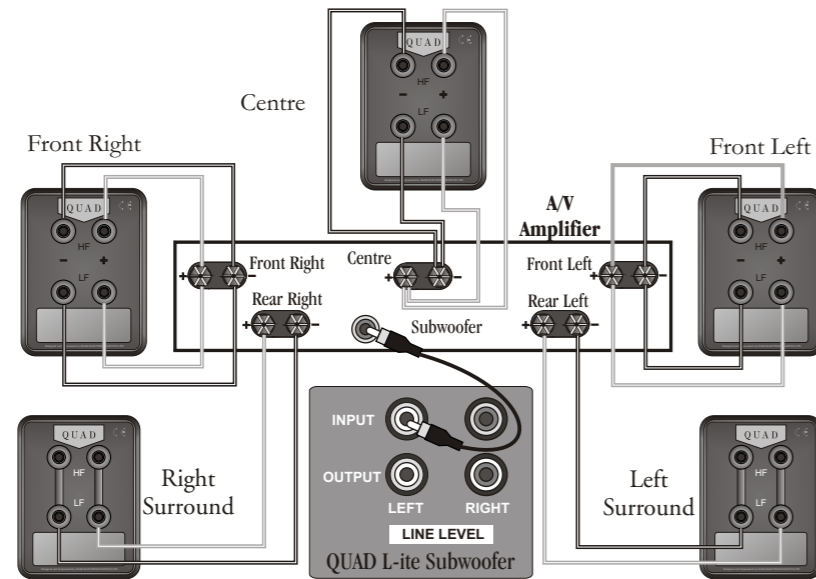
Sea Power Co. Ltd., 4/F, No.5 Wu Chung 2th Road, WuKu Industrial Area, Taipei County, Taiwan, R.O.C.  
Tel: +886-2-2298-2688 Fax: +886-2-2298-2396 *Email: [baikuo@ms23.hinet.net](mailto:baikuo@ms23.hinet.net)*

## SPECIFICATIONS:

<b>Bass Unit</b>	2 x 100mm
<b>Treble Unit</b>	25mm Dome
<b>Rec. Amplifier Power</b>	30 - 150 W
<b>Nominal Impedance</b>	6 Ohms
<b>Sensitivity (2.83V @ 1M)</b>	87 dB
<b>Frequency Response</b>	80Hz - 24kHz
<b>Crossover Frequency</b>	2.5kHz
<b>Frequency Fb</b>	75Hz
<b>Size mm (H x W x D)</b>	135 x 340 x 160

**Quad loudspeakers are compatible  
with 4 and 8 Ohm amplifiers**

## HOME THEATRE LOUDSPEAKER CONNECTIONS



## SETTING LOUDSPEAKER SIZES IN HOME THEATRE SYSTEMS

Many digital AV Processors require you to specify the size of speakers in all channels. These are usually 'Large' or 'Small'.

Always choose 'Small' for the Surround channels and Centre channel whether you are using a subwoofer or not.

**If you are not using a subwoofer:** Set the Front Speakers to 'Large'. Set the 'Subwoofer' option on the processor to 'Off' or 'No'. The Front channels will receive all the system bass.

**If you are using a subwoofer:** When set to 'Small' all the system bass will go into the subwoofer. If you choose 'Large' the Front channel bass will be sent to the Front speakers. Bookshelf speakers should be set to 'Small', large floor standing units may be set to 'Large'.

Refer to your A/V processor manual for details on setting up your Home Theatre system.

## GETTING THE BEST FROM YOUR LOUDSPEAKERS

### Phase

If the sound lacks definition or the bass is indistinct, this could be because you have inadvertently mis-connected your loudspeakers. Please check the wiring to all the loudspeakers carefully, especially if they are bi-wired.

### Ancillary Equipment

QUAD loudspeakers are compatible with the great majority of audio-visual and high fidelity equipment - but a loudspeaker is only as good as the signal it gets. Your amplifier should have ample reserves of power - a low powered amplifier can run out of steam and the resulting distortion is unpleasant to listen to and could damage your speakers. A larger amplifier will usually sound better and enhance the reliability and performance of your loudspeakers.

### Running In

Loudspeakers are electro-mechanical and, like all mechanical systems, they need a 'running in' period. For the first 50 hours or so exercise care and play your system at reasonable volume levels. After running in, you will notice a significant sonic improvement.

### Care and Maintenance

Little maintenance is required. The cabinets can be occasionally wiped with a damp (not wet) cloth. Spray polish, if used, should be applied sparingly - spray the polish onto a cloth and then apply it to the speaker. NEVER spray the grille cloth or the speaker drive units. To clean the grilles, remove them first before gently brushing with a soft brush. Never use solvent cleaners, minor stains are best removed with soap and lukewarm water.

# QUAD

## L-ite Centre



## INTRODUCTION

The Quad L-ite Centre is a dedicated centre channel loudspeaker, voiced to blend seamlessly with the other loudspeakers in the L-ite Series, though it can be used with any high performance loudspeakers.

A secondary use could be as low level background sound reinforcement applications where clarity and precision are a requirement.

When partnered with either a pair of Quad L Series loudspeakers as the Front channels, and the Quad L-ite Satellites as Rear Effects channels, a Home Theatre system of outstanding performance can be built up.

**Please read the following notes carefully. They will help you to install your loudspeaker correctly and safely.**

- Switch off the amplifier and all sources before making connections to your sound system. When you switch on the system or change sources, set the volume control to minimum and turn up the level gradually.
- The position of your Volume Control is NOT a reliable guide as to the maximum capabilities of your sound system. Playing the system with extreme settings of volume and/or tone controls may damage the amplifier and loudspeaker and your hearing.
- Do not connect loudspeaker terminals to the mains supply.
- Ensure that your loudspeakers are correctly wired and are in phase.
- Do not subject your loudspeakers to excessive cold, heat or sunlight.
- **WARNING:** To reduce the risk of fire or electrical shock do not expose this product to rain or moisture. The product must not be exposed to dripping and splashing and no object filled with liquids - such as a vase of flowers - should be placed on the product.
- No naked flame sources - such as candles - must be placed on the product.
- Do not place heavy objects on top of loudspeaker cabinets. If you play the loudspeakers with the grilles removed be careful to protect the drive units from children and pets.
- Do not use makeshift stands. Always fit a manufacturer's approved stand using the instructions and the fixings provided. Your dealer will advise you.
- Do not attempt to dismantle the loudspeaker. There are no user serviceable parts inside and you will invalidate the warranty.
- The Centre Channel loudspeaker is screened and may safely be operated close to a TV set.

## UNPACKING THE EQUIPMENT

### The QUAD carton contains

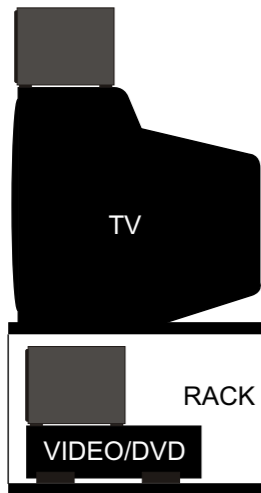
- The QUAD L-ite Centre loudspeaker
- Instruction Manual
- Warranty Registration Form

Consult your dealer if any of these items is not present.

Unpack the loudspeakers carefully. Be especially careful not to damage the loudspeaker cabinets when removing the polythene sleeves. Please retain the packing materials for future transportation. If you dispose of the packing do so with regard to any recycling provision in your area.

Retain the user manual and the information concerning the date and place of purchase of this equipment for future reference. In the unlikely event that you pass this product on to a third party please include the user manual.

## POSITIONING YOUR LOUDSPEAKERS



The loudspeaker should be positioned centrally between the loudspeakers close to the television and mounted either above or below the screen.

Locate the loudspeaker on a stable flat surface to avoid any danger of the cabinet moving when it is vibrated by high sound levels. If you mount the unit on top of the television, move it forward so that the front grilles are level with or slightly in front of the screen. This will reduce reflections from the screen and the top of the cabinet.

Although you may place the centre channel loudspeaker under the TV monitor, this should always be regarded as second best. The preferred position is always above the monitor, as shown.

As an alternative to placing the loudspeaker on or under the TV screen, the speaker incorporates a threaded bracket mounting on the rear panel suitable for a wide range of proprietary brackets. Your dealer will advise you on a suitable choice.

## CONNECTIONS AND TERMINALS

### Crossover Network

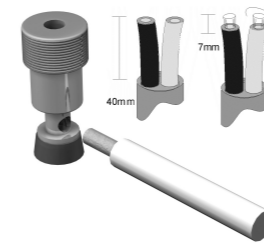
Quad crossovers separate the treble and bass networks into two distinct sections, each connected by a dedicated pair of terminal posts. This enables the treble and bass components to be separately driven for optimum performance. The upper pair of terminals is connected to the treble network and the lower pair to the bass network.

As supplied, the treble terminal pair is connected to the bass terminal pair by removable metal straps. These should be left in place for standard installations.

### Choosing and Preparing Cable

Specialist audio cable will usually offer better performance than general purpose 'bell' or 'zip' wire. Audio cable is polarised, with two cores of different colours, or often, in the case of twin cable, a coloured tracer or ridge along one wire to indicate polarity.

Choose a cable of suitable diameter - cable that is too thin will limit the dynamics of the sound and may impair the bass response. Split the twin cores to a depth of about 40mm. Carefully strip the insulation from each end, leaving about 10mm of bare wire. If the cable is stranded, lightly twist to gather any loose strands.

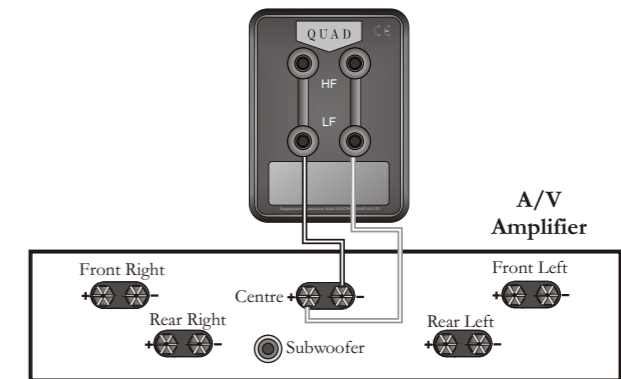


## Connecting Speaker Terminals

Unscrew the terminal. Thread the bared end of each cable through the hole in the bottom of the terminal post. Ensure that there are no loose strands which may touch adjacent terminals. Retighten the terminal securely.

## CONNECTING THE LOUDSPEAKER

### Standard Connections

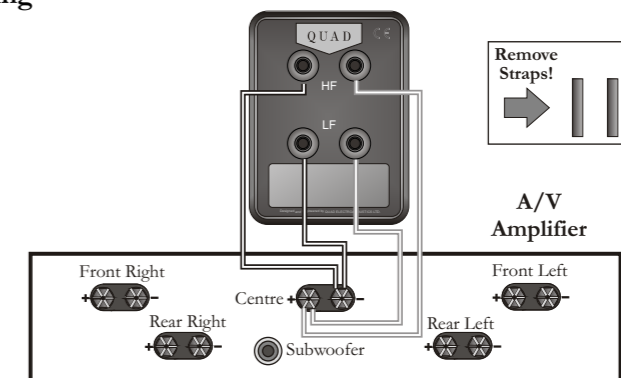


Choose a suitable length of twin core speaker cable, and prepare the ends as described.

Connect the positive(+) terminal of the loudspeaker to the positive(+) terminal of the Centre Channel on your A/V amplifier. Note that the positive(+) terminal is located on the right of the loudspeaker terminal panel.

You may connect to either the upper or lower pair of terminals.

### Bi-Wiring



Most of the audio signal going to the speakers drives the bass units. Where one cable feeds both bass and treble units, this heavy bass current can modulate the high frequencies. Using separate cables for treble and bass units reduces intermodulation effects and improves headroom and clarity. This technique of wiring is known as Bi-Wiring. To bi-wire, you will need to install two lengths of twin core cable between the amplifier and each loudspeaker.

Unscrew each terminal a few turns and remove the metal straps. The upper pair of terminals on the crossover panel feeds the treble units and the lower terminals feed the bass unit. Connect the cables between the amplifier and the loudspeaker as indicated above and retighten all the terminals securely.