

Configure Your Wireless Network



Configure Your Wireless Network

(Reference for a normal network setup)


You will need a correct IP address, DNS name server address, Proxy server, and connection port number to setup your connection. If you have purchased a wireless Internet service account, then the service desk at the location where you will be connecting will provide you with this information, or, you should obtain this information from the network administrator of your company.



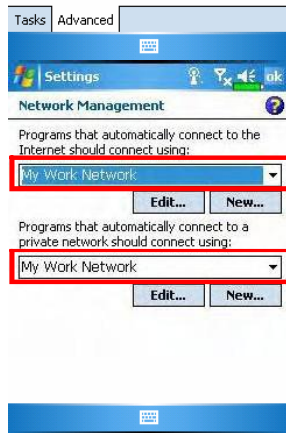
When your Pocket PC is unable to automatically detect or connect to a usable wireless network, please try to configure the network manually. Please refer to this section's settings instructions.


1. Select the  icon in the **Wireless Manager** main menu, a  icon will display on the navigation bar.




2. Then tap  **Settings**, the **Connections** tab, **Connections**, and then the **Advanced** tab, the screen displays shown on the left.

3. Select the **Select Networks** Button.



4. As shown on the left, make sure that **My Work Network** is selected for both items, and finally tap  to save and exit.


 **My Work Network** is the **WLAN** connection method. As this option is from a choice of two, the next time you need to use the **GPRS** connection, you will have to refer to the above listed steps, select **My ISP** for the first item.

WLAN Utility	
Link Status	Connected
SSID	test
Operating Mode	Infrastructure
BSSID	00 00 00 00 00 00
Channel	6
WEP	Enable
Power Saving	Enable
Signal Strength	-86
TxRateMode	Unavailable

Settings	
Configure Wireless Networks	
Add New...	
WLAN	Connecting
NT	Available
test	Available

Settings	
Configure Network Authentication	
Authentication:	Open
Data Encryption:	WEP
<input type="checkbox"/> The key is automatically provided	
Network key:	
Key index:	1

Back	Next
------	------

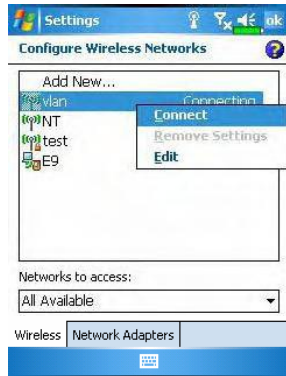
5. In the **Wireless Manager** main menu, select  to enter the **WLAN Utility** screen.


6. Then select the **Configure** Button to enter the **WLAN setup** screen.

7. Select name of a currently available network to enter the **WLAN authorization setup** screen.

8. Set accordingly to the rules and information provided by the hotspot location.

- ① **Authentication:** Select Open
- ② **Data Encryption:** Select WEP to enable the entry bar about Network key
- ③ **Network key**
- ④ **Network index**



9. Tap and hold on the name of the network connection that you can currently use, then select **Connect. When the  icon appears on the top of the screen, your wireless network has been successfully connected.**

Configure Your Wireless Network

(Reference for Proxy setup)

To successfully configure your network, you will need the following information: a correct IP address, DNS name server address, Proxy server, and connection port number, etc. Please obtain the above listed information from your company's network administrator. If your company's networking environment doesn't need Proxy server settings, please close the proxy connection.

Tap  Settings, the Connections tab, Connections, and then the Tasks tab.



When your Pocket PC fails to automatically detect or connect to a usable wireless network, please try using the manual method to configure your network settings. Please refer to the settings information in this section.

1. Select "Setup my proxy server" or "Edit my proxy server," as shown on the left.

2. In the Proxy Settings tab screen, make sure that the following items have been checked:

- ① This network connects to the Internet
- ② This network uses a proxy server to connect to the Internet



The above is applicable to an office environment that requires a Proxy setup.

For others that close the proxy connection, please do not check the box named “This network connects to the Internet” and skip the following procedures.

3. Enter the name into the “Proxy server” field.

4. Select the Advanced button and enter the advanced settings screen.



5. You can modify the settings by tapping the HTTP type.



6. Enter the number into the “Port” field. Finally, tap **ok to save and exit.**

9 Sending and Receiving Messages /

E-mails and SMS Messages

Refer to “Connecting to the Internet” section to learn how to connect the Pocket PC to the Internet and start using **Messaging** to send and receive E-mails and SMS messages.

This section explains the basic preparations and processing principles. If you have any questions, refer to online help about Pocket PC or ActiveSync.


Use **Messaging** to send and receive E-mails messages in either of these ways:

1. Send and receive e-mail messages by connecting directly to an e-mail server through an Internet service provider (ISP) or a network.
 2. Synchronize e-mail messages with Microsoft Exchange or Microsoft Outlook on your desktop computer.
- Inbox synchronization does not support synchronization with Microsoft Outlook Express.

Reference for using E-mail:

1. Refer to “E-mail Server Setup” section.
2. Refer to “Using E-mails and SMS”.

Reference for using SMS:

1. Refer to “Using E-mails and SMS” section.
2. To send and receive SMS only, you only need to turn on the Phone (antenna icon on the Navigation Bar is ). It is not necessary to connect GPRS to the network nor is it necessary to establish a new E-mail account and connection in **Messaging**.

Synchronizing E-mail Messages

If you want to synchronize e-mails with company or home usage, please refer to this section. E-mail messages can be synchronized as part of the general synchronization process. You will need to enable Inbox synchronization in ActiveSync. For information on enabling Inbox synchronization, see ActiveSync Help on the desktop computer.

During synchronization:

1. Refer to “Connecting to the Internet” section. Select the partnership you want to establish under “Set Up a Partnership” and you can start to synchronize data. If you choose not to synchronize data, you can manually copy or move E-mails between the Pocket PC and a personal computer.
2. E-mail messages in the “Outbox” folder on your Pocket PC are transferred to Exchange or Outlook, and then sent from those programs.
3. Exchange or Outlook E-mail is supported.
4. Mails in the Pocket PC Inbox folder will be transmitted to the personal computer and then sent out via Microsoft Outlook or Microsoft Exchange.
5. If you delete mail in the Pocket PC, this mail will also be deleted from the personal computer the next time the two devices perform synchronization.
6. SMS messages are not synchronized.

Connecting Directly to the Mail Server

For single-machine use, not combining office and home E-mails, please refer to "E-mail Server Setup" section.

You will receive messages directly from the mail server. This is irrelevant to personal computer use. You can work online or offline. When working online, you read and respond to messages while connected to the e-mail server. Messages are sent as soon as you tap **Send**, which saves space on your Pocket PC.

When working offline, once you've downloaded new message headers or partial messages, you can disconnect from the e-mail server and then decide which messages to download completely. The next time you connect, **Inbox** downloads the complete messages you've marked for retrieval and sends the messages you've composed.

Based on your preference, you can program the Pocket PC to receive mail for the last few days, receive subjects only or the entire mail, or just receive mail with file attachments smaller than a specified size. If you want to receive more or less mail, tap **Menu**, **Tools** and then **Options** to adjust the E-mail account settings according to your needs.


E-mail Server Setup

Refer to this section if you are preparing for single-machine use and not combining office and home E-mails. If you already have an E-mail account from your ISP or company network, you can use **Messaging** to send and receive mails and messages. To establish a new **Messaging E-mail** server on your Pocket PC, refer to the following sections.

1. Obtain the following information from your ISP or company's network administrator for convenience in setting up the E-mail service.

- ❶ E-mail address, account name and password
- ❷ POP3 or IMAP4 server name for internal mail
- ❸ SMTP server name for sending mail



2. E-mail Setup: Tap  **Messaging, Menu, Tools, and then New Account** to display the screen on the left. Follow the screen instructions to set up the E-mail service.

3. Refer to “Connecting to the Internet” section to connect the Pocket PC to the Internet and you can start sending and receiving E-mails and SMS messages.

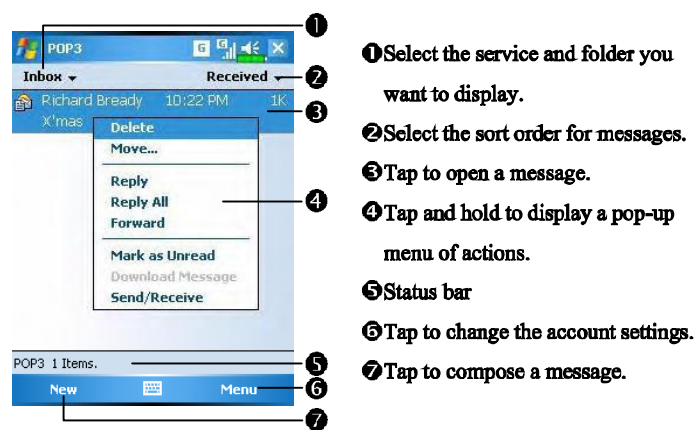
4. Connecting to the E-mail server:

- ❶ Tap **Messaging, Menu, Switch Accounts**, and then check **POP3**.
- ❷ Tap **Menu** and then **Send/Receive**.

❸ Tap **Menu, Tools** and then **Options** to change the E-mail setup.

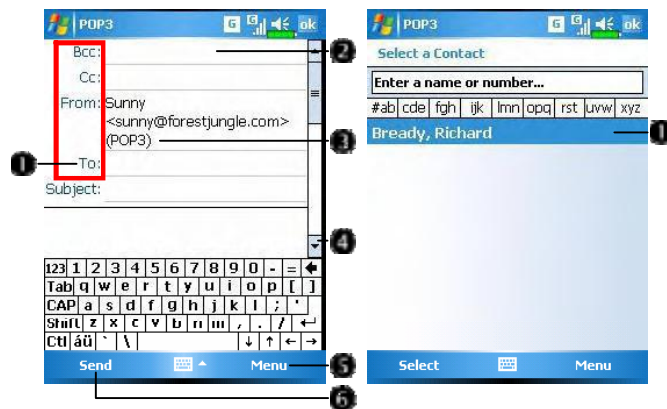
Using E-mails and SMS

Below is a brief description of the Messaging screen functions:



Brief description on writing, sending, reading and replying (to) mail:

- 1. Send and Receive Mail: Tap New to compose a message and then tap Send to send it.**



- 1 Tap To, Cc or Bcc to open the Contacts screen. As long as you have set up Contacts beforehand, you can just tap to select.**
- 2 Tap the data area to input the E-mail address, mobile phone number and subject directly. If there is more than one contact, use a semi-colon (;) to separate the addressees.**
- 3 POP3 means to send E-mail, and Text Messages means to send an SMS message. Note that the same message cannot be sent as E-mail and SMS message at the same time.**
- 4 Use the scroll bar to view the header.**
- 5 Menu Button: Provides frequently-used functions for writing mail such as request return receipt, attach files to E-mail, select canned messages, edit canned messages or cancel mail.**
- 6 Send Button: Send your messages.**

2. Read and Reply: Receive new mails by tapping **Menu** and then **Send/Receive**. Switch to the “Inbox” folder and tap to open. The following figure shows the open mail screen.



↪ Besides reading the messages, provide frequently-used functions for replying to or forwarding.

3. Change preference settings.

- ① Set the **Inbox Synchronization** option under **ActiveSync**.
- ② Tap **Messaging, Menu, Tools, Options**, and then the **Accounts, Message...** tabs on the **Pocket PC** to set the appropriate options.

Direct Push Technology Alert

The Direct Push Technology alert function will enable you as a corporate user to never miss another e-mail, using the Pocket PC for the best business service. Through the ActiveSync feature, your Pocket PC can instantly and automatically receive important e-mails from Microsoft Exchange Server.

Direct Push Technology Alert Settings

The following description will explain how to setup the ActiveSync program on the Pocket PC end, and to directly synchronize the Pocket PC with Exchange Server. This way, your device under GPRS or wireless network connections will be able to receive in-coming e-mail alerts, and be able to instantly read the messages.

A reminder that if you selected the connection method to be wireless network, for power saving purposes when the Pocket PC enters sleep mode the connection will be broken. During this time you will not be able to receive instant e-mail. However, you will only need to press the "Power Button" to automatically complete the connection to the wireless network.



1. Tap  **Programs, ActiveSync, Menu, and then Configure Sever.**

☑ If the Exchange Server synchronization has not been setup before, please select **Add Server Source.**

① Tap to connect and synchronize.

② Tap to modify the synchronization settings.

ActiveSync

Edit Server Settings

Server address:
exchange.xxxxxx.xxx.xxx

Note: This is the same as your Outlook Web Access server address.

This server requires an encrypted (SSL) connection

2. Obtain the server address, user name, network etc. from the company network administrator to successfully setup the server data.

123 1 2 3 4 5 6 7 8 9 0 - = < >

Tab| q w e r t y u i o p | l

CAP| a s d f g h j k l ; ' |

Stn| z x c v b n m | , . / < >

Ctl| á ú ` \ | < > < >

Cancel Next

ActiveSync

Schedule

Sync during

Peak times: As items arrive

Off-peak times: As items arrive

Use above settings when roaming

Send outgoing items immediately

3. Tap Menu and then Schedule. The Peak times and Off-peak times provide a As items arrive option, this is the direct push technology alert function.

Adjust [peak times](#) to fit your schedule.

MSN Messenger

☛ On the Today screen, tap  to display the MSN Messenger sign-in screen.

☛ Tap  **Programs**, **Pocket MSN**, and then **MSN Messenger**.

To switch to MSN Messenger, tap  **Programs**, and then tap **Pocket MSN**. MSN[®] Messenger on your Pocket PC is an instant messaging program that lets you:

- ☛ See who is online.
- ☛ Send and receive instant messages.
- ☛ Have instant message conversations with groups of contacts.

For more information on using MSN Messenger, tap  and then **Help**.

To use MSN Messenger, you must have a Microsoft Passport™ account or a Microsoft Exchange e-mail account. You must have a Passport to use MSN Messenger Service. If you have a Hotmail® or MSN account, you already have a Passport. Once you have obtained either a Microsoft Passport or a Microsoft Exchange account, you are ready to set up your account.

☛ Sign up for a Microsoft Passport account at <http://www.passport.com>. Get a free Microsoft Hotmail e-mail address at <http://www.hotmail.com>.

Setting Up

Before you can connect, you must enter Passport or Exchange account information.



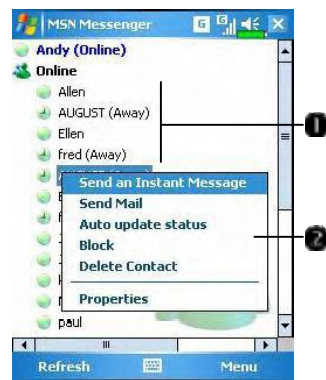
Tap here to sign in

To sign in, enter your e-mail address and password.

If you already use MSN Messenger on your desktop computer, your contacts will show up on your Pocket PC without being added again.

Working with Contacts

The MSN Messenger window shows all of your messenger contacts at a glance, divided into Online and Not Online categories. From this view, while connected, you can chat, send an e-mail, block the contact from chatting with you, or delete contacts from your list using the pop-up menu.

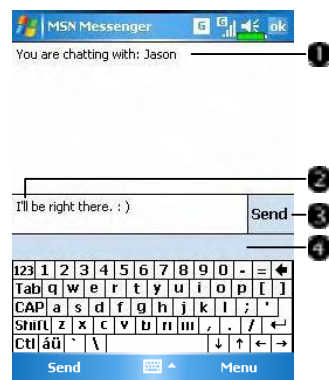


- 1 Tap a contact to start a chat.
- 2 Tap and hold to display a pop-up menu of actions.

To see others online without being seen, tap Menu, My Status, and then select Appear Offline.

If you block a contact, you will appear offline but will remain on the blocked contact's list. To unblock a contact, tap and hold the contact, then tap Unblock on the pop-up menu.

Chatting with Contacts



- 1 View full chat.
- 2 Enter message.
- 3 Tap to send message.
- 4 View status of the chat. To know if the contact you are chatting with is responding, look for the message under the text entry area.



Tap a contact name to open a chat window. Enter your message in the text entry area, and tap **Send**. Or tap **Menu** and then **My Text** to select a preset message. To invite another contact to a multi-user chat, tap **Menu** and then **Invite** and tap the contact you want to invite.

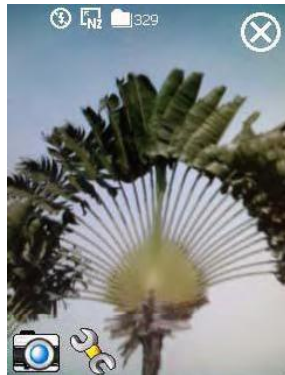
To switch back to the main window without closing a chat, tap **Menu** and then **My Contacts**. To revert back to your chat window, tap **Menu** and then **Chats** and select the person whom you were chatting with.

10 Multimedia /

Using Camera

Tap  **Programs, Multimedia, and then Camera.**

1. To take photos of scenery or of other people, turn the Pocket PC so the screen is facing you and when you are satisfied with the composition, press the  button on the side of the Pocket PC.
2. To take a picture of yourself, turn the Pocket PC around so that the preview mirror is facing you.
3. Tap  and then **Messaging** to send the picture as an attachment in an E-mail.



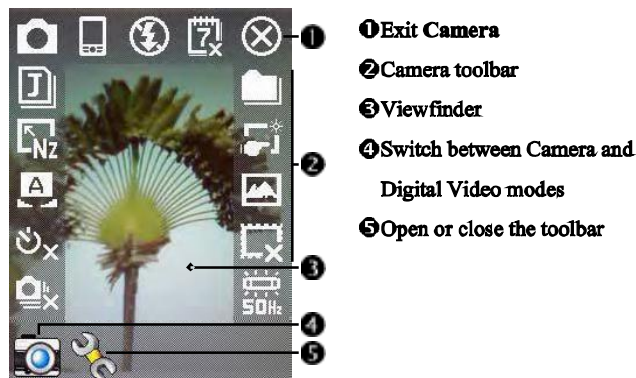
 Shutter  Lens  Preview mirror  Adjust focus

Shooting Tips

To take a self-portrait, it is best to face into the light. For best photo results, avoid backlit or dark areas.



Camera Mode

You can use **Camera** to shoot pictures and videos. This section describes the **Camera** tools.



Icon	Meaning
	Photo mode: Normal, Timer, Continuous shutter, Portrait
	Activate "Timer" to select the fixed time for shooting a picture
	Activate "Continuous shutter" to select the number of pictures to be taken
	Choose landscape or portrait
	Enable or disable the flash function
	Display or hide the date
	Select file format
	Select resolution. The higher the resolution, the larger the picture files.
	Select scene
	Select storage path
	Enable or disable Wizard
	Select special effect
	Select picture frame
	Select Frequency





Camera Mode Using Wizard

Tap  or  to select Wizard. After you press the shutter button on the side of the Pocket PC, the Wizard will guide you through how to link to other programs conveniently. This section explains the Wizard tools.




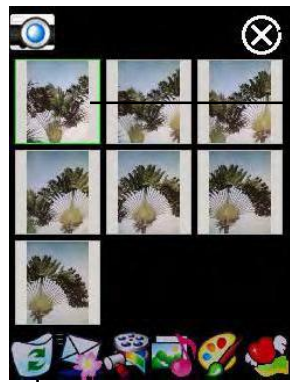
- ① Exit Camera
- ② Photo-viewing area, retains the last photo just taken
- ③ Wizard toolbar


If “Continuous Shutter” is selected, it will directly open or use the last picture just taken when linking to other programs.

Icon	Meaning
	Return to Camera to continue taking pictures
	Delete current picture
	Connect to Messaging
	Connect to Multimedia Manager


Managing Pictures Shot by Continuous Shutter

Tap  to select "Continuous shutter" in the wizard mode. After you press the shutter button, you can preview all thumbnails just shot and delete the unnecessary one.




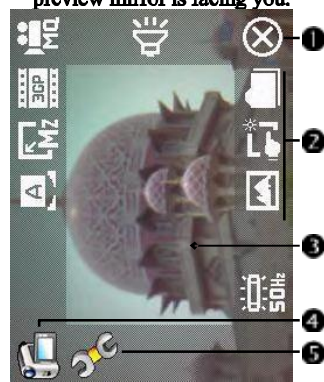
- ① Exit Camera
- ② Tap the thumbnail that you want to delete
- ③ Tap  on the toolbar to delete the unnecessary picture

Digital Video Mode

Recording without entering the Camera screen: Directly press and hold the  Recorder Button for a few seconds and then release to start recording. To finish recording, press the Recorder Button to stop.

Tap  Programs, Multimedia, and then Camera, DV Mode.


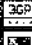







1. Since only horizontal (landscape) mode is supported, please rotate your Pocket PC 90 degrees when recording.
2. To shoot a video, turn the Pocket PC so the screen is facing you, press the  Recorder Button on the side of the Pocket PC to start recording. To finish recording, press the Recorder Button again to stop.
3. To shoot the footage of yourself, turn the Pocket PC around so that the preview mirror is facing you.



① This section explains the Camera's digital video tools.

- ① Exit Camera
- ② Digital Video Mode toolbar
- ③ Viewfinder
- ④ Switch between Camera and Digital Video modes
- ⑤ Open or close the toolbar

To playback on a personal computer, select 3GP format before recording.

Icon	Meaning
	Recording quality. The higher the resolution, the larger the file.
	Select file format
	Select resolution. The higher the resolution, the larger the file.
	Select scene
	Enable or disable sound recording
	Select storage path
	Enable or disable Wizard
	Select special effect
	Select Frequency