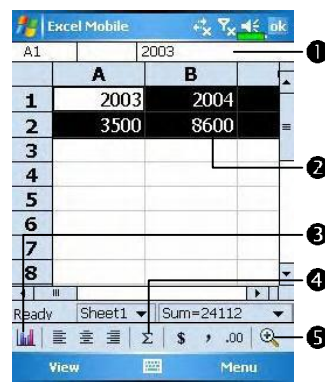
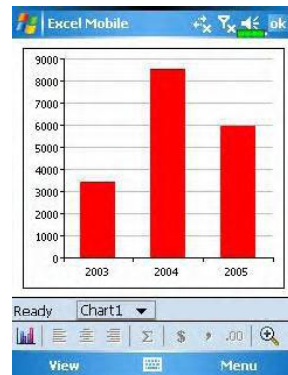


Excel Mobile provides fundamental spreadsheet tools, such as formulas, functions, sorting, and filtering. To display the toolbar, tap **View** and then check **Toolbar**.



- ① Cell contents appear here as you enter them.
- ② Select cell contents for the resource of chart.
- ③ Insert Chart button
- ④ AutoSum button
- ⑤ Zoom button



- ⌚ Tap **Insert Chart Button** to modify the relevant information, such as titles, scale, type and series.

Tips for Working in Excel Mobile

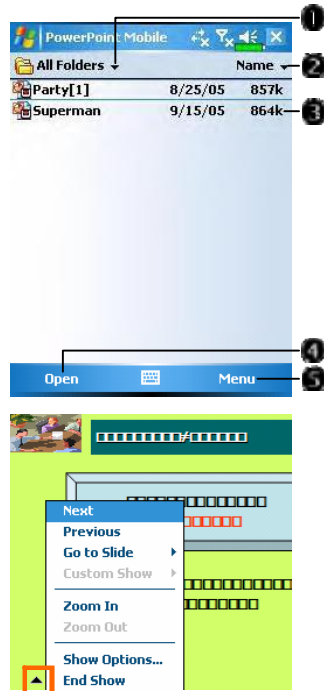
For more information on using Excel Mobile, tap  and then **Help**.


Note the following when working in large worksheets in Excel Mobile:

- ✿ **View in full-screen mode to see as much of your worksheet as possible.**
Tap **View** and then **Full Screen**. To exit full-screen mode, tap **Restore**.
- ✿ **Show and hide window elements.** Tap **View**, **Show** and then tap the elements you want to show or hide.
- ✿ **Freeze panes on a worksheet.** First select the cell where you want to freeze panes. Tap **View** and then **Freeze Panes**. You might want to freeze the top and leftmost panes in a worksheet to keep row and column labels visible as you scroll through a sheet.
- ✿ **Split panes to view different areas of a large worksheet.** Tap **View** and then **Split**. Then drag the split bar to where you want it. To remove the split, tap **View** and then **Remove Split**.
- ✿ **Show and hide rows and columns.** To hide a row or column, select a cell in the row or column you want to hide. Then tap **Menu**, **Format**, then **Row** or **Column**, and then **Hide**. To show a hidden row or column, tap **Menu**, **Format**, then **Row** or **Column**, and then **Unhide**.


PowerPoint Mobile

View PowerPoint slides created in PowerPoint 97 and above versions on your desktop computer. The supported formats include .ppt and .pps files.

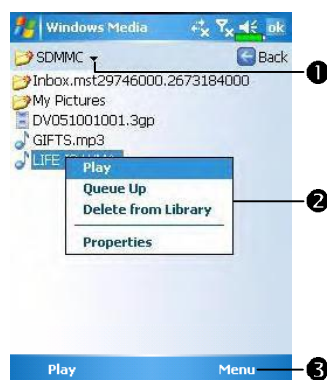


- 1 Select the type of folder you want displayed in the list.
 - 2 Tap to change the sort order of the list.
 - 3 Tap to open a file, and play the slides.
 - 4 Tap to open the file you played last time.
 - 5 Provides the relevant menu.
- 6 Tap  on the lower left corner to open the menu. Tap **End Show** to quit.

Windows Media Player


Use Microsoft Windows Media Player for Pocket PC to play digital audio and video files that are stored on your Pocket PC or on a network. To switch to Windows Media Player for Pocket PC, tap  and then

Windows Media.



- ① Use full-screen to view video.
- ② Display website. Find music or video to be played from website.
- ③ Return to the start of the current file or previous file.
- ④ Tap to play or pause.
- ⑤ Tap to skip to the next song.
- ⑥ Tap to adjust volume.
- ⑦ Audio/mute
- ⑧ Indicates the progress of the current track.
- ☐ To enter the screen shown on the left, tap **Menu** and then **Library**.
- ① Select **Library**.
- ② Tap and hold the file or folder to be played, then tap **Play** or **Queue Up**.
- ③ **Menu Button:** Tap **Open File** to play files that do not belong to the current library. Tap **Update Library** to update the file list.

Use Microsoft Windows Media Player on your desktop computer to copy digital audio and video files to your Pocket PC. You can play Windows Media and MP3 files on your Pocket PC.

For more information about using Windows Media Player for Pocket PC, tap , and then tap **Help**.

Internet Explore

Using Internet Explore

Use Microsoft[®] Internet Explorer Mobile to view Web or WAP pages in either of these ways:


- During synchronization with your desktop computer, download your favorite links and mobile favorites that are stored in the Mobile Favorites subfolder in Internet Explorer on the desktop computer.
- Connect to an Internet service provider (ISP) or network and browse the Web. To do this, you'll need to create the connection first, as described in "Connect to the Internet".

When connected to an ISP or network, you can also download files and programs from the Internet or intranet.

To switch to Pocket Internet Explorer, tap  and then **Internet Explorer**.

Browse the Internet

Refer to “Connecting to the Internet” section to connect the Pocket PC to the Internet and start browsing websites.

1. Tap  and then **Internet Explorer**.
2. Input the site address into the address bar at the top of the screen and connect to this site.
3. Use the scroll bar at the right side or bottom of the screen, or press the up or down button on the Pocket PC to view the contents of the entire website.



- ① Input address here
- ② Tap to launch
- ③ Back Button
- ④ Provides the relevant menu, such as **Favorites, Add to Favorites, Home, and Refresh.**

Aside from keying in the address directly, you can also connect to websites using the following methods.

- Tap the **Favorites** button, and then tap the favorite you want to view.
- In the address bar, tap the arrow ▼ to choose from previously entered addresses.
- To add a favorite link while using the Pocket PC, go to the page you want to add, tap and hold on the page, and tap **Add to Favorites**.

View Mobile Favorites and Channels



① Tap the favorite you want to view.

② Tap to add or delete a folder or favorite link.

1. Tap the Favorites button to display your list of favorites.

2. Tap the page you want to view.

You'll see the page that was downloaded the last time you synchronized with your desktop computer. If the page is not on your Pocket PC, the favorite will be dimmed. You will need to synchronize with your desktop computer again to download the page to your Pocket PC, or connect to the Internet to view the page.

The Mobile Favorites Folder

Only items stored in the Mobile Favorites subfolder in the Favorites folder in Internet Explorer on your desktop computer will be synchronized with your Pocket PC. This folder was created automatically when you installed ActiveSync.

Favorite Links

During synchronization, the list of favorite links in the Mobile Favorites folder on your desktop computer is synchronized with Pocket Internet Explorer on your Pocket PC. Both computers are updated with changes made to either list each time you synchronize. Unless you mark the favorite link as a mobile favorite, only the link will be downloaded to your Pocket PC, and you will need to connect to your ISP or network to view the content. For more information on synchronization, see ActiveSync Help on the desktop computer.

Synchronize Mobile Favorites

If you are using Microsoft Internet Explorer 5.0 or later on your desktop computer, you can download mobile favorites to your Pocket PC. Synchronizing mobile favorites downloads Web content to your Pocket PC so that you can view pages while you are disconnected from your ISP and desktop computer.

Use the Internet Explorer plug-in installed with ActiveSync to create mobile favorites quickly.

Create a Mobile Favorite

- 1. In Internet Explorer on your desktop computer, click Tools and then Create Mobile Favorite.**
- 2. To change the link name, enter a new name in the Name box.**
- 3. Optionally, in Update, select a desired update schedule.**
- 4. Click OK. Internet Explorer downloads the latest version of the page to your desktop computer.**

5. Synchronize your Pocket PC and desktop computer. Mobile favorites that are stored in the Mobile Favorites folder in Internet Explorer are downloaded to your Pocket PC.

■ If you did not specify an update schedule in step 3, you will need to manually download content to keep the information updated on your desktop computer and Pocket PC. Before synchronizing with your Pocket PC, in Internet Explorer on your desktop computer, click **Tools and then **Synchronize**. You will see the last time content was downloaded to the desktop computer, and you can manually download content if needed. You can add a button to the Internet Explorer toolbar for creating mobile favorites. In Internet Explorer on your desktop computer, click **View**, **Toolbars**, and then **Customize**.**

Save Pocket PC Memory

Mobile favorites take up storage memory on your Pocket PC. To minimize the amount of memory used:

- In the settings for the Favorites information type in ActiveSync options, turn off pictures and sounds, or stop some mobile favorites from being downloaded to the Pocket PC. For more information, see ActiveSync Help.**
- Limit the number of downloaded linked pages. In Internet Explorer on the desktop computer, right-click the mobile favorite you want to change and then **Properties**. In the **Download** tab, specify 0 or 1 for the number of linked pages you want to download.**

12 Maintaining the Pocket PC /


Adding or Removing Programs

Programs added to your Pocket PC at the factory are stored in ROM (read-only memory). You cannot remove this software, and you'll never accidentally lose ROM contents. All other programs and data files added to your Pocket PC after factory installation are stored in RAM (random access memory).

You can install any program created for your Pocket PC, as long as your Pocket PC has enough memory. The most popular place to find software for your Pocket PC is on the Pocket PC Web site (<http://www.microsoft.com/windowsmobile/pocketpc/>).


Add Programs Using ActiveSync

You'll need to install the appropriate software for your Pocket PC on your desktop computer before installing it on your Pocket PC.


1. Determine your Pocket PC and processor type so that you know which version of the software to install. Tap  and then **Settings**. On the **System** tab, tap **About**. In the **Version** tab, make a note of the information in **Processor**.
2. Download the program to your desktop computer (or insert the CD or disk that contains the program into your desktop computer). You may see a single *.xip, *.exe, or *.zip file, a Setup.exe file, or several versions of files for different Pocket PC types and processors. Be sure to select the program designed for the Pocket PC and your Pocket PC processor type.
3. Read any installation instructions, Read Me files, or documentation that comes with the program. Many programs provide special installation instructions.
4. Connect your Pocket PC and desktop computer.

5. Double-click the *.exe file.

- ❶ If the file is an installer, the installation wizard will begin. Follow the directions on the screen. Once the software has been installed on your desktop computer, the installer will automatically transfer the software to your Pocket PC.
- ❷ If the file is not an installer, you will see an error message stating that the program is valid but it is designed for a different type of computer. You will need to move this file to your Pocket PC. If you cannot find any installation instructions for the program in the Read Me file or documentation, use ActiveSync Explore to copy the program file to the Program Files folder on your Pocket PC. For more information on copying files using ActiveSync, see ActiveSync Help.

Once installation is complete, tap  **Programs**, and then the program icon to switch to it.

Add a Program Directly from the Internet

- 1. Determine your Pocket PC and processor type so that you know which version of the software to install. Tap  and then **Settings**. On the **System** tab, tap **About**. In the **Version** tab, make a note of the information in **Processor**.**
- 2. Download the program to your Pocket PC straight from the Internet using Pocket Internet Explorer. You may see a single *.xip, *.exe or *.zip file, a Setup.exe file, or several versions of files for different Pocket PC types and processors. Be sure to select the program designed for the Pocket PC and your Pocket PC processor type.**
- 3. Read any installation instructions, Read Me files, or documentation that comes with the program. Many programs provide special installation instructions.**
- 4. Tap the file, such as a *.xip or *.exe file. The installation wizard will begin. Follow the directions on the screen.**



Add a Program to the Start Menu


Tap , **Settings**, the **Personal** tab, and then **Menus**.




Check the box for the program.

If you do not see the program listed, you can either use **File Explorer** on the Pocket PC to move the program to the Start Menu folder, or use **ActiveSync** on the desktop computer to create a shortcut to the program and place the shortcut in the Start Menu folder.

Using **File Explorer** on the Pocket PC: Tap , **Programs**, **File Explorer**, and locate the program (tap the folder list, labeled **My Documents** by default, and then **My Device** to see a list of all folders on the Pocket PC). Tap and hold the program and tap **Cut** on the pop-up menu. Open the **Start Menu** folder located in the **Windows** folder, tap and hold a blank area of the window, and tap **Paste** on the pop-up menu. The program will now appear on the  menu.

✿ **Using ActiveSync on the desktop computer :** Use the Explorer in ActiveSync to explore your Pocket PC files and locate the program. Right-click the program, and then click **Create Shortcut**. Move the shortcut to the **Start Menu** folder in the **Windows** folder. The shortcut now appears on the  menu. For more information, see ActiveSync Help.

Remove Programs

✿ Tap  and then **Settings**. On the **System** tab, tap **Remove Programs**.



⌚ Tap a program name from the list under “Programs in storage memory” to highlight it and then tap **Remove**.

If the program does not appear in the list of installed programs, use **File Explorer** on your Pocket PC to locate the program, tap and hold the program, and then tap **Delete** on the pop-up menu.

Manage Memory

View Memory Status

Tap  **Settings**, the **System** tab, and then **Memory**.

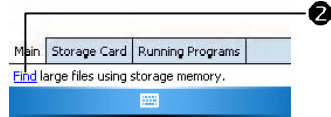


Storage	Program
Total: 87.61 MB	Total: 47.13 MB
In use: 5.85 MB	In use: 31.21 MB
Free: 81.76 MB	Free: 15.92 MB

Tap the **Main** tab.

1 The status of **Storage and Program** memory.

2 Find: Quick link to the **Search** program.



2



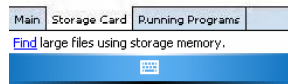
Total storage card memory:	30.37 MB		
In use:	9.77 MB	Free:	20.60 MB

SDMMC

Tap the **Storage Card** tab.

1 Current **storage card** memory status.

2 Tap to select the **built-in** or **external** storage card.





- ⌂ Tap the **Running Programs** tab.
- ① Tap a program name in "Running Programs List" and when it is highlighted, tap **Activate** or **Stop**.
- ② **Activate:** Start running the program you selected.
Stop: Stop the program you selected.
Stop All: Stop all programs in the "Running Programs List."

Find Available Memory


Under certain circumstances such as insufficient memory, the Pocket PC cannot allocate memory automatically. Try to solve this problem through the following methods:

☰ Tap  **Programs**, and then **Search**.



1. To find files occupying larger amounts of memory, select "Larger than 64 KB" for type and tap **Search**.
2. Then use **File Explorer**.



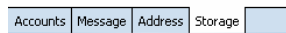
3. Tap  **Programs**, and then **File Explorer**. Use **File Explorer** to move the files you want to keep to external storage cards. Tap and hold the items to be moved, then tap **Cut** or **Copy** on the pop-up menu. Move to the storage card and then tap **Paste**.

4. Use **File Explorer** to delete files that you no longer need.



Tap  **Messaging**, **Menu**, **Tools**, **Options**, and then the **Storage** tab.


Check "Store attachments on storage card" to save attached files from E-mails automatically in the storage card in future.

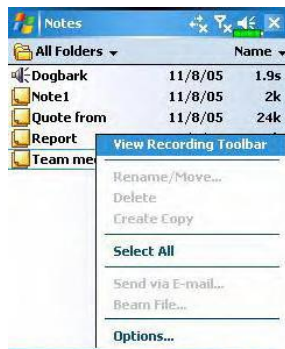


Tap  **Internet Explorer**, **Menu**, **Tools**, and then **Options**.

Tap **Clear History** and **Delete Files** to delete records of websites that you have browsed.

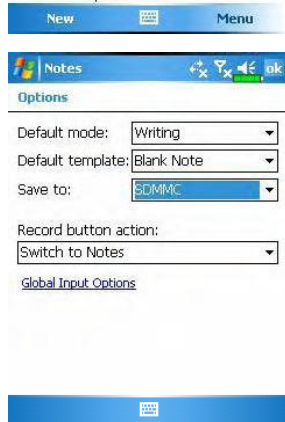


Tap  Programs, Notes/Word Mobile/Excel Mobile, Menu, and then Options.



1. Enter the Notes file list screen.

2. Tap Menu and then Options.



3. Tap the “Save to” function button and select SDMMC from the list.

This indicates that you are using your external storage card.

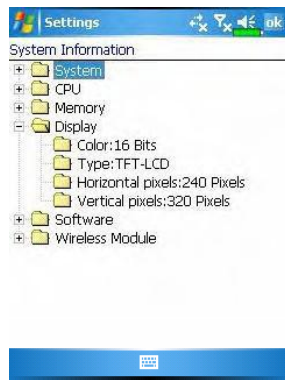
Hereafter, new files will be automatically saved to this storage card.

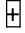

Follow the same operation procedure for Notes in Word Mobile and Excel Mobile.

In addition, you can use the Rename/Move or Save As function provided by the program above to move or save files to the storage card.

System Information

Tap , **Settings**, the **System** tab, and then **System Information**.



Tap  or  to display or hide the system information.

12-10

13 Specifications /

Item	Description
Operating system	Windows Mobile™ 5.0 software for Pocket PCs (AKU 3.2)
Processor	Samsung SC3 2442, 400 MHz
Memory	128 MB Flash ROM, 64 MB SDRAM
Display	2.8", 240 x 320, 65,536 colors, TFT-LCD
Communication	<ul style="list-style-type: none">■ GSM Quad band 850/900/1800/1900 MHz■ EDGE■ GPRS Class 10■ Bluetooth® v2.0 Class 2 + EDR■ WiFi IEEE 802.11b/g
GPS	Built-in GPS module (SiRF Star III) TMC function supported * (* subject to change by region)
Expansion slot	MicroSD
Camera	Built-in 2.0 Mega Pixels Up to 1600 x 1200 Resolution
Interface/Audio	Built-in microphone and speaker External stereo headset jack
Interface/Data	USB Sync, headset jack
Power supply	Battery: 1530 mAh Li-Ion, rechargeable, replaceable AC Adapter: 100~240 VAC/50~60 Hz, 5V/1A DC

Item	Description
Environmental temperature	Daily operation: 0°C ~ 40°C; storage: -10°C ~ 50°C
Environmental humidity	45% ~ 85%
Dimensions	113 x 59.5 x 15.5 mm (LxWxH) 146 g including battery
Optional accessories	Battery, Car charger, Bluetooth® Headset

■ Design and specifications are subject to change without notice.

14 Regulation Notice and Safety Declaration /

SAR Information

Read this manual carefully before using.

Warning: Reduced electromagnetic waves, please use properly.

GSM Head: 0.743 mW/g (10g)

DCS Head: 0.441 mW/g (10g)

CE WLAN Body: 0.127 mW/g (10g)

PCS Head: 0.776 W/Kg (1g)

WLAN SAR: 0.136 W/Kg (1g)

GSM 850 Body with holster: 0.987W/Kg (1g)

Holster Information

Holster model name: PZX28

Dimension: 6.1x11.8x 2.5cm +/- 0.1cm

Health and Safety Information

Electrical and Battery Safety

- ♥ Use only the AC adapter provided with this product. Do not use similar items from other products. The provided AC adapter is for use with this product only. Do not use it for other electrical products.
- ♥ Follow the specifications of the battery manufacturer: Avoid charging the battery when the environmental temperature is higher than 45°C. Do not store or use the battery when the environmental temperature is higher than 50°C. Otherwise, battery expansion or leakage may occur.
- ♥ Do not attempt to disassemble, pound, pierce or damage the battery to avoid causing injury, danger or risk.

Application Environment Safety

- ♥ Do not directly expose the Pocket PC to any of the following environments: rapid changes of temperature, high temperature (such as direct exposure to sunlight or stoves), extremely low temperature, high pressure, areas with electrostatic discharge interference or dusty and humid places. Do not soak or wet the Pocket PC with water or any other liquid.
- ♥ Do not place the Pocket PC near electrical appliances (such as TVs, computers, scanners, disc players, faxes, hair dryers, etc.) that may generate electrostatic discharge interference.
- ♥ Never drop the Pocket PC nor subject it to strong impact.
- ♥ Do not use ordinary pen or any object with a sharp tip to tap the Pocket PC cover or screen (LCD panel) to avoid damaging and scratching the surfaces.
- ♥ Do not use corrosive or volatile liquids to wipe the Pocket PC. If necessary, use a soft cloth or tissue to wipe the Pocket PC.

Warranty Security

- ♥ In case the Pocket PC is damaged, kindly return it to your place of purchase. Do not attempt to disassemble this device on your own as this may void the warranty.
- ♥ If any hazards result from the failure of the user to comply with usage rules, we will not be held responsible for any resulting warranty claims.

Data Security

- ♥ This company is not responsible for any data loss or damage to the Pocket PC due to improper use. Record important data in your notebook separately or use the USB accessories that come with this product to save important data to your computer or storage card.

Privacy Restrictions

- ♥ Some countries require full disclosure of recorded telephone conversations, and stipulate that you must inform the person with whom you are speaking that the conversation is being recorded. Always obey the relevant laws and regulations of your country when using the rewording feature of your Pocket PC Phone.

IMPORTANT SAFETY PRECAUTIONS

- ♥ When using this product, the safety precautions below must be taken to offset possible legal liabilities and damages.

Safety in airports, medical facilities, and inflammable environments

- ♥ When you are on a plane, in a medical facility or at a gas station where wireless communications devices are not allowed and must be turned off, please go to **Wireless Manager** and select the **ALL OFF** Button to turn off your Pocket PC's mobile phone, Bluetooth, and wireless LAN functions. By pressing the "Power Button" of the Pocket PC, you only turn off the display.