

Quanta LM17B Test Operation Guide

Version 0.1
Nov. 24, 2014
Robert

Contents

1.	Introduction	3
2.	Test Environment	3
2.1.	Uninstallation	3
2.1.1.	Windows 7 (32 bit)	3
2.2.	Installation of drivers	5
2.2.1.	Windows 7 (32 bit)	5
3.	Operation of Connection Manager	10
3.1.	Windows 7 (32 bit)	10
3.1.1.	Basic Configuration	10
3.1.2.	Extended Information	12
3.1.3.	LTE Manager	14
3.1.4.	Manual PLMN	15
3.1.5.	Change to Commercial Mode	16
3.1.6.	Disable Polling	17
3.1.7.	PIN Management	18
3.1.8.	Automatic Connect Mode	19
3.1.9.	Device Location	20
3.1.10.	Help	21
3.1.11.	Reset	22
4.	Diagnostic Tool	23
4.1.	MsgView	23
4.2.	DbgView	24
5.	Firmware Upgrade	25
5.1.	Image Burn Tool	25
6.	OMA-DM	29
6.1.	Mandatory Configuration	29
6.2.	How to Enable/Disable APN	30
6.3.	How to Modify OMA-DM Server URL	32
6.4.	How to Online Enable/Disable Internet APN	34
6.5.	How to Enable/Disable OMA-DM log	35
6.6.	How to Use VI editor	36

Revision History

Version	Release Date	Description
0.0	Apr. 23, 2014	1 st Test Operation Guide Release
0.1	Nov. 24, 2014	2 nd Test Operation Guide Release

1. Introduction

This document gives the guidance on how to test Quanta devices.

2. Test Environment

Quanta LM17B device supports Windows XP, Windows Vista (32 bit), and Windows 7 (32 bit) operating system. It's recommended to install Quanta LM17B software in Windows 7 32-bit OS.

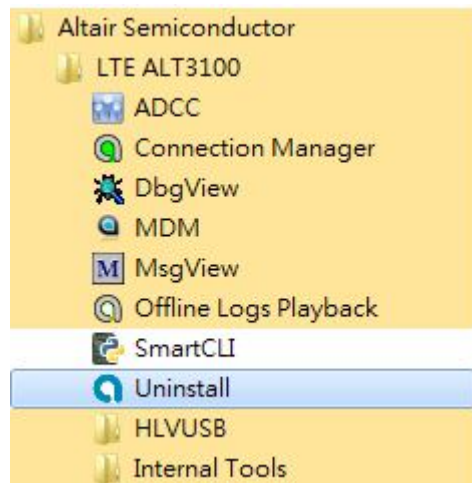
2.1. Uninstallation

In order to install latest version of software, uninstallation of previous version is required, including drivers, connection manager, and corresponding software tools.

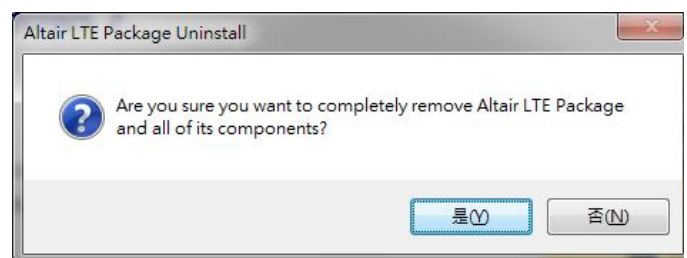
2.1.1. Windows 7 (32 bit)

1. Please click
Start→Programs→Altair Semiconductor→LTE
ALT3100→Uninstall

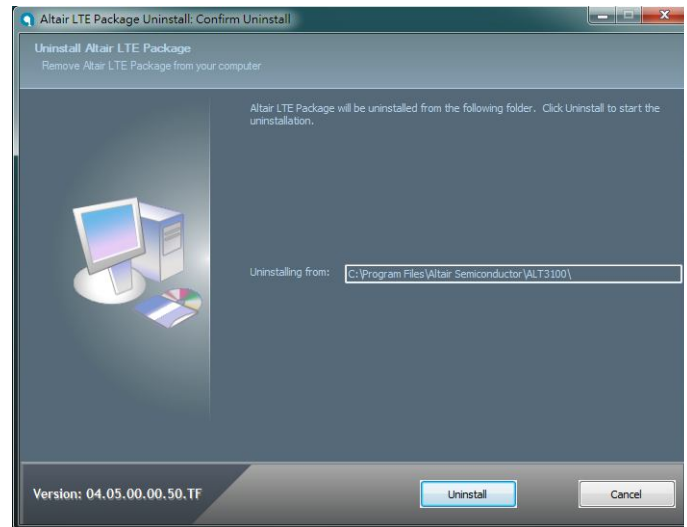
*****LM17B needs to use ALT3800 package.**



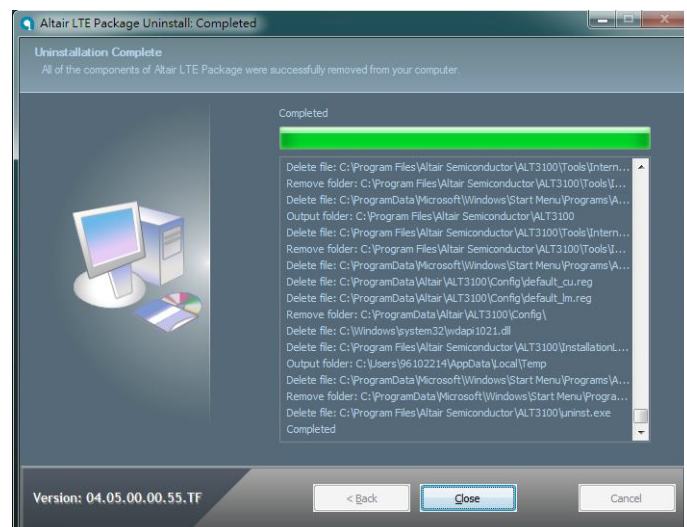
2. Please click "Yes (Y)" button.



- Please click "Uninstall" button.
- Please wait a few seconds to complete uninstallation.



- Please click "Close" button.



- Please click "OK" button.



- Please click "Start→Programs→Altair Semiconductor→LTE ALT3100→LTEUSB→Uninstall".



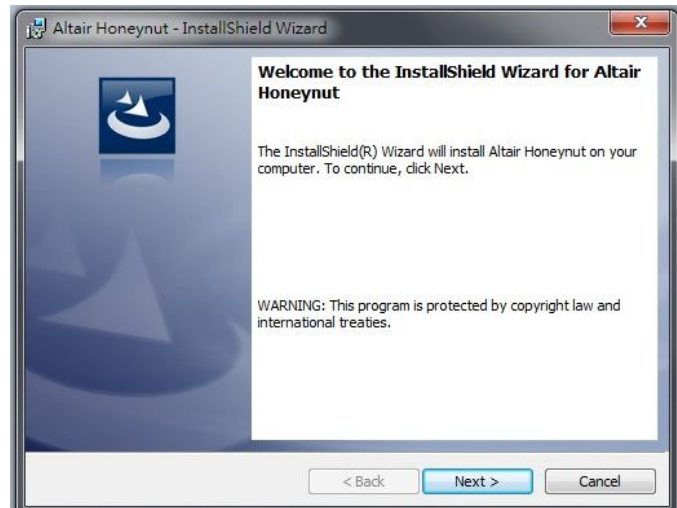
- Please click "YES (Y)" button.
- Please reboot your computer after you have completed the uninstallation.



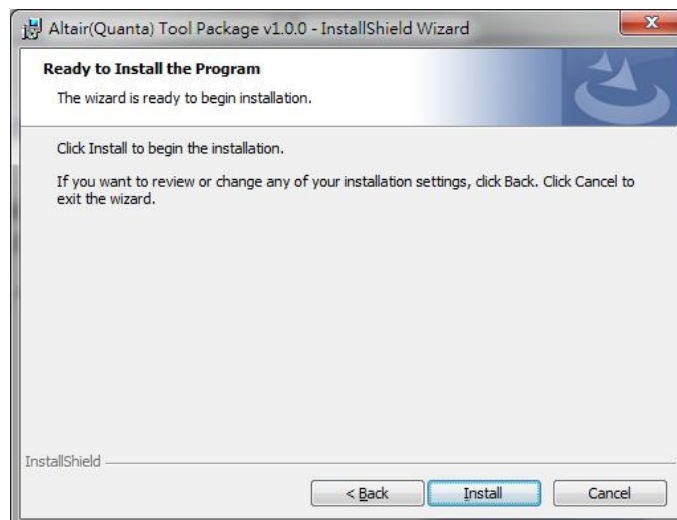
2.2. Installation of drivers

2.2.1. Windows 7 (32 bit)

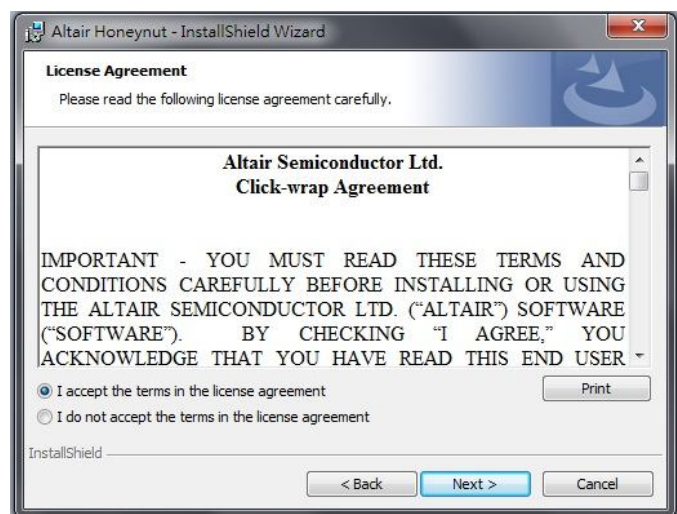
1. Please double clicks on "Honeynut_HN_01_02_00_30_06_setup.exe" to start installation.
2. Please click "Next >" button.



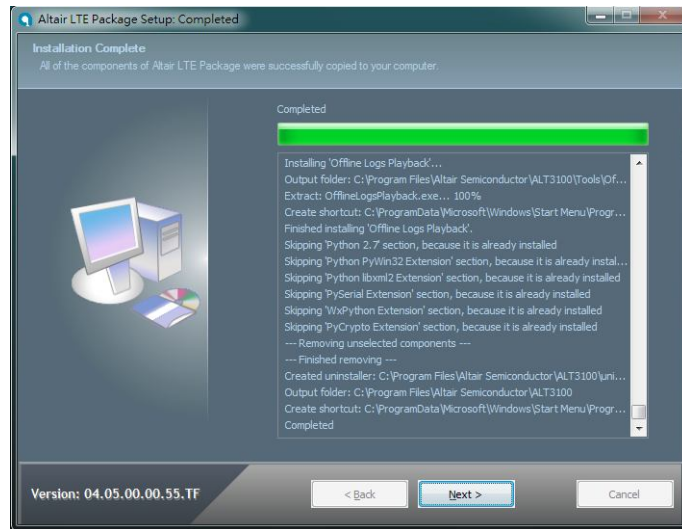
3. Please click "Install" button.
4. It will take a few minutes to complete installation.



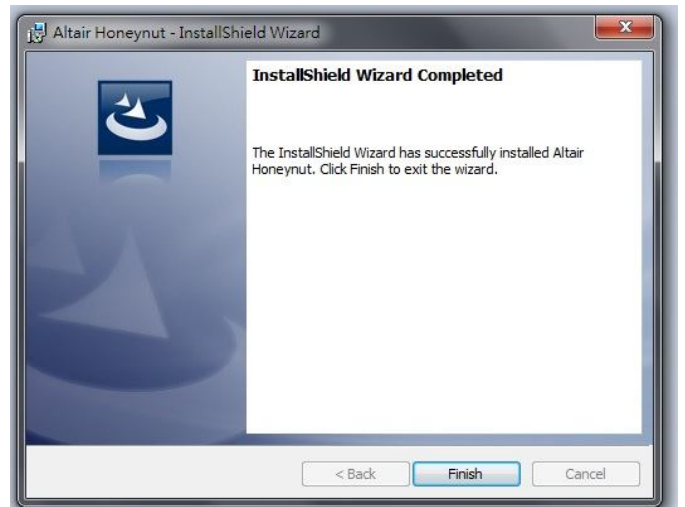
5. Please check "I accept the terms in the license agreement".
6. Please click "Next >" button.



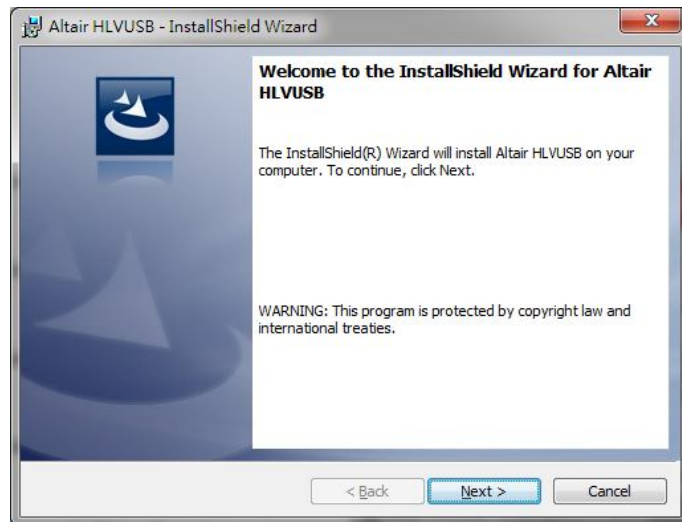
7. Please click “Next >” button.



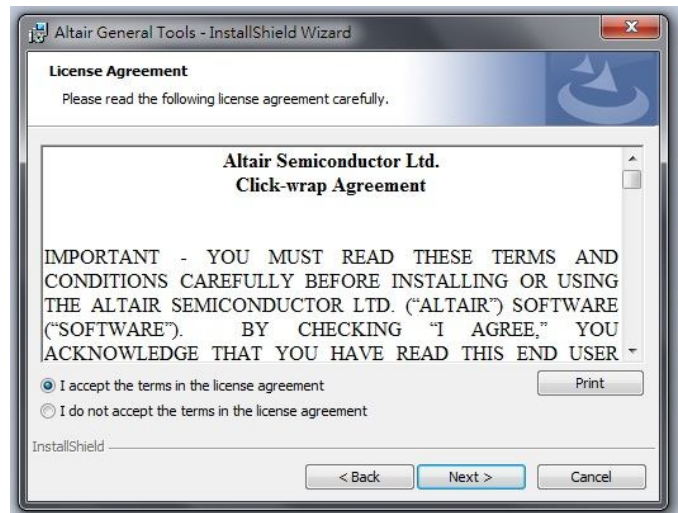
8. Please click “Finish” button.



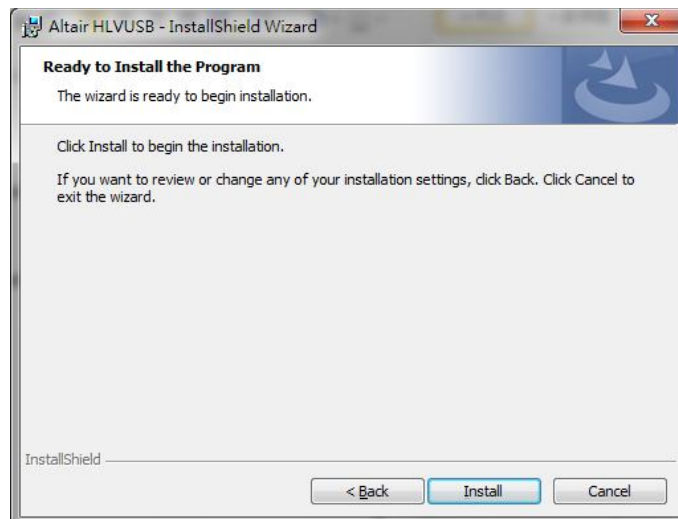
Please click “Next >” button.



9. Please check “I accept the terms in the license agreement”.
10. Please click “Next >” button.



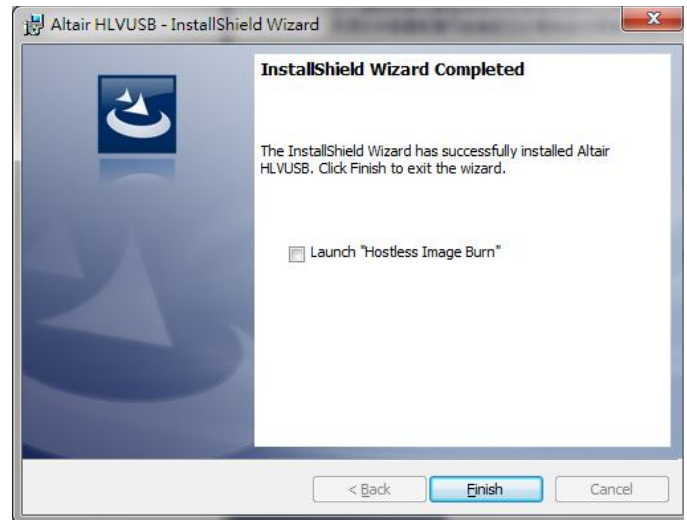
11. Please click “Install” button.



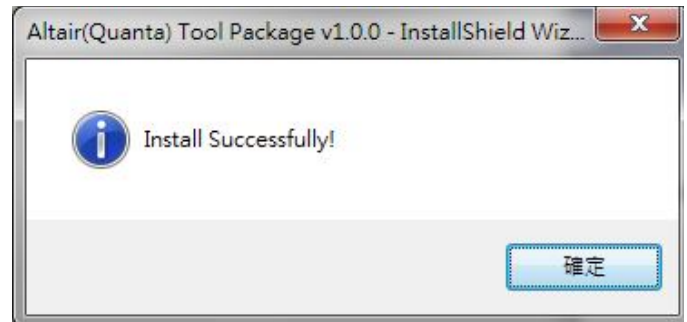
12. Please click “Continue to install driver anyway (I)”.
13. Please click “Continue to install driver anyway (I)”.
14. Please click “Continue to install driver anyway (I)”.
15. Please click “Continue to install driver anyway (I)”.



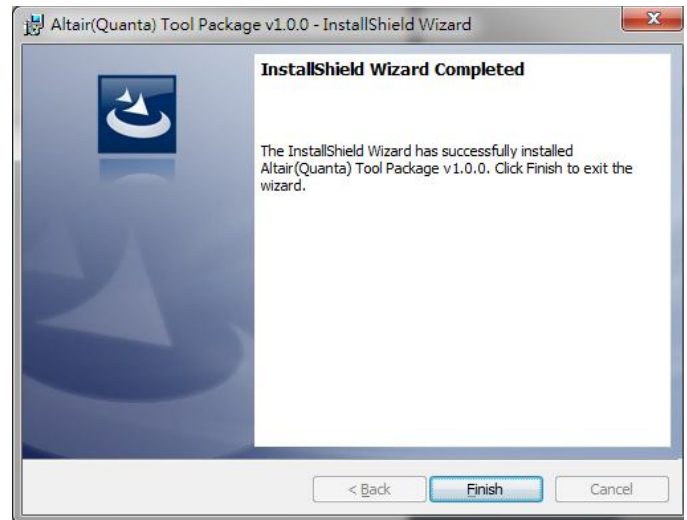
16. Please un-check “Launch “Hostless Image Burn””.
17. Please click “Finish” button to complete driver installation.



18. Please click “OK” button.



19. Please click “Finish” button.



20. Please plug in Quanta device and please be patient and wait a few minutes to complete driver installation.
21. Please click “Close (C)” button.
22. Please reset Quanta device (take out and plug in the usb cable), it will take about 50 seconds for Quanta embedded system to be ready.



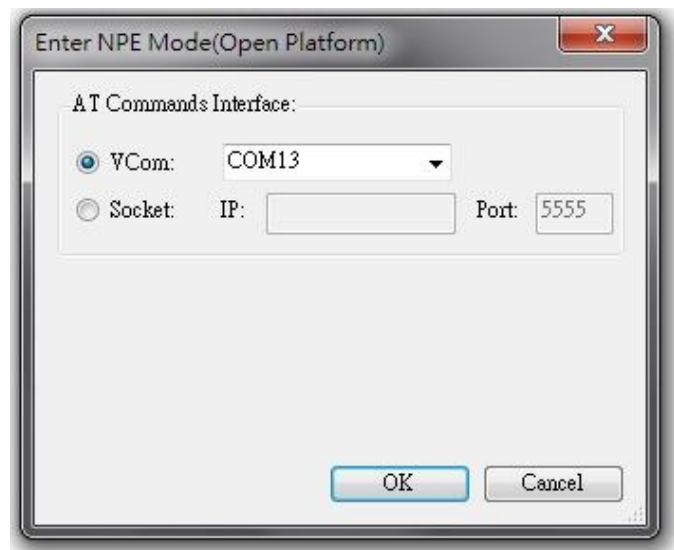
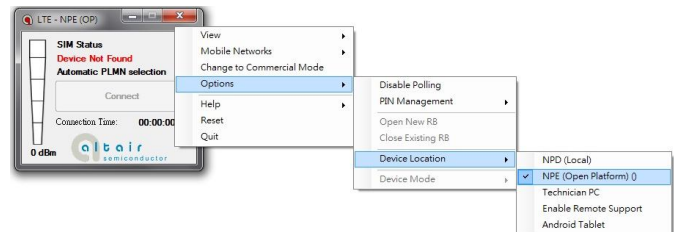
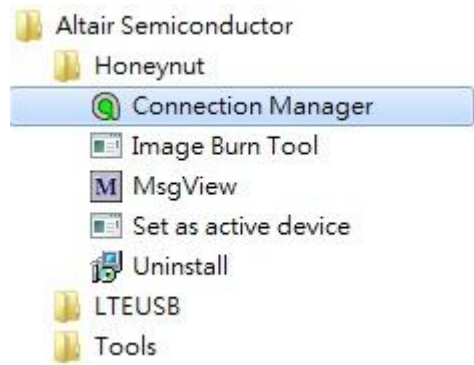
- 23.
- 24.
- 25.

3. Operation of Connection Manager

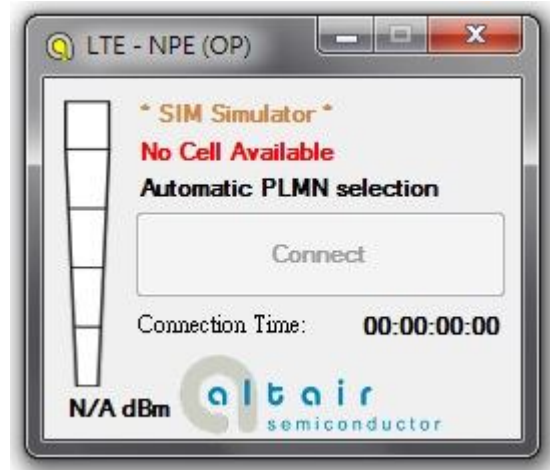
3.1. Windows 7 (32 bit)

3.1.1. Basic Configuration

1. In order to get information from our embedded connection manager, it's mandatory to configure as the following instructions.
2. Please click
Start→Programs→Altair Semiconductor→Honeynut→Connection Manager.
3. Please right click on top of connection manager and select
Options→Device Location→Open Platform.
4. Connection manager will pop out window for you to enter IP and port.
5. Please select VCom for card detection.
6. Please click "OK" button.

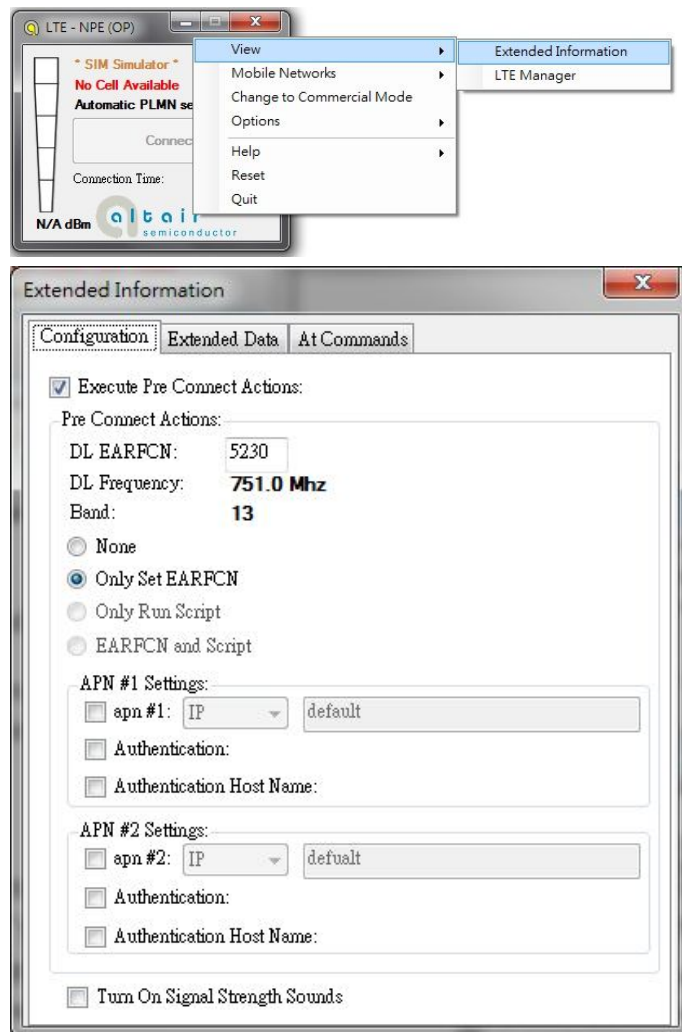


7. Please check if connection manager shows device information correctly and the red Altair logo turns into yellow color.

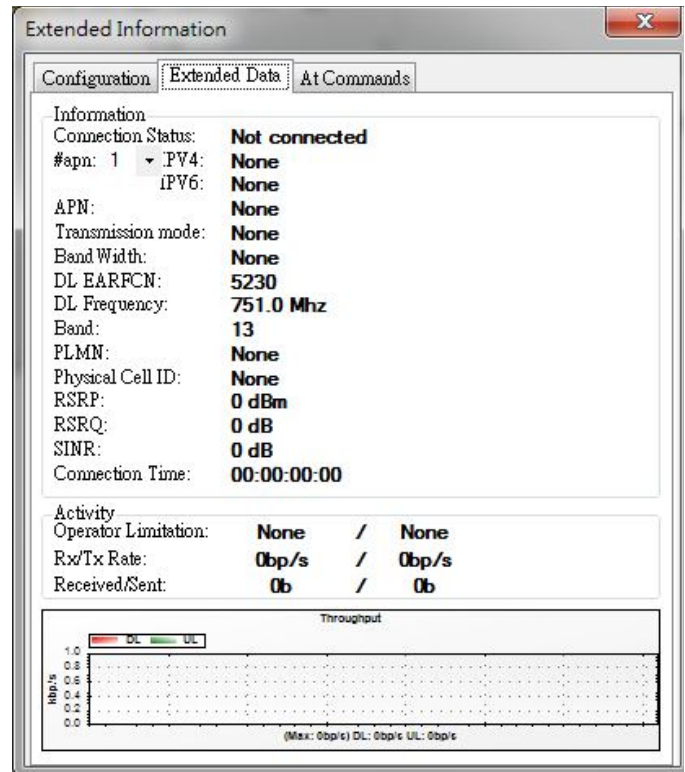


3.1.2. Extended Information

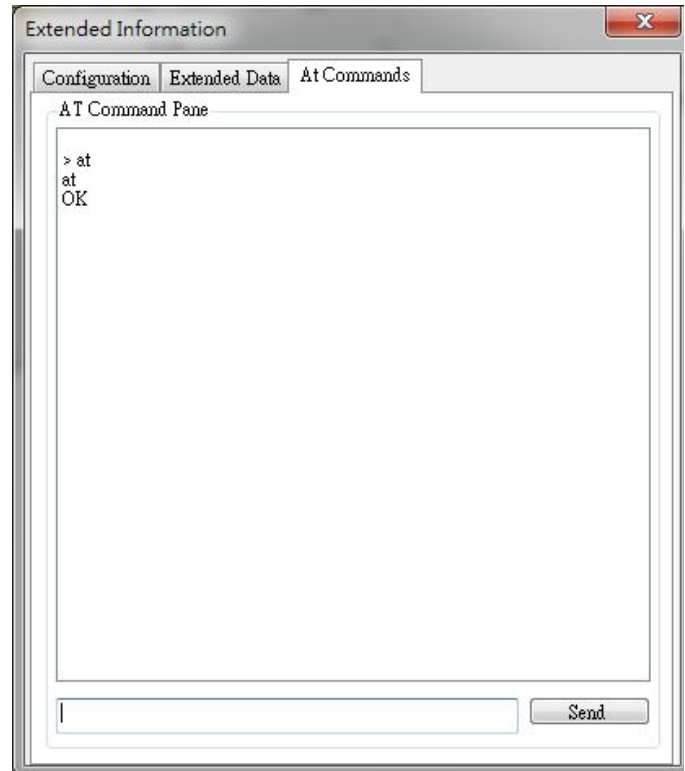
1. Please right click on top of connection manager and select View→Extended Information.
2. Connection manager will pop out “Extended Information” window.
3. It’s NOT mandatory to set up this “Configuration” tab, connection manager will scan all the supported frequency bands and try to connect to the network.



4. The “Extended Data” tab shows information of Connection Status, APN, Transmission mode, Bandwidth, DL EARFCN, Band, PLMN and Physical Cell ID and so on.



5. The “At Commands” tab will allow you to send AT Commands sets to configure supported functional parameters or to get supported information you want.



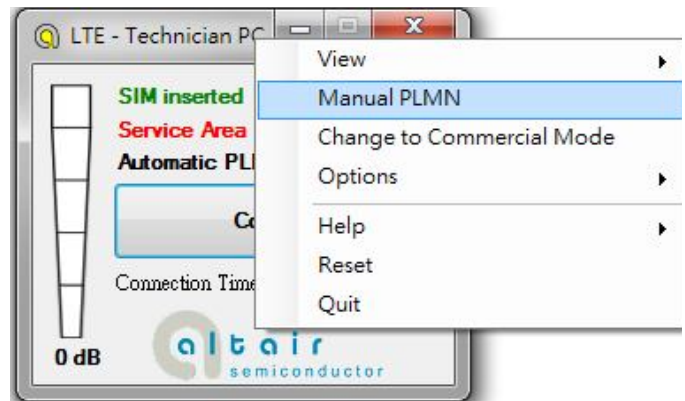
3.1.3. LTE Manager

1. Please right click on top of connection manager and select
View→LTE Manager.
2. Connection manager will pop out a “Supervisor Password” window.
3. Please input “123456” and click “OK” button.
4. It will pop out a “LTE Manager” window.
5. LTE Manager shows information about GeneralInfo, LogCreator, Dispatcher, Relay, and GPS Tool.

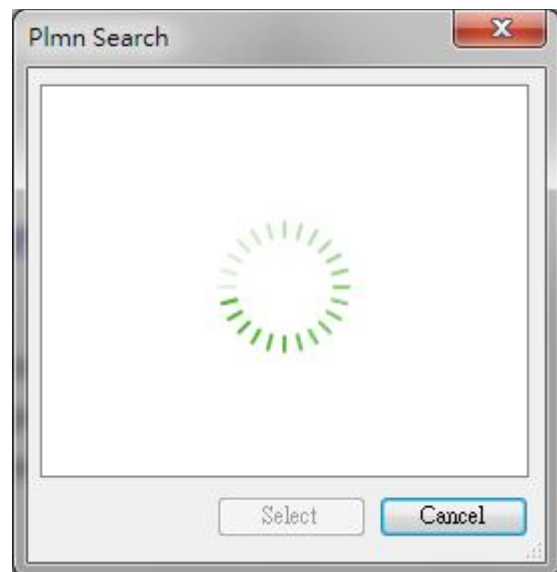


3.1.4. Manual PLMN

1. Please right click on top of connection manager and select Manual PLMN.
2. Connection manager will pop out a "Plmn Search" window.

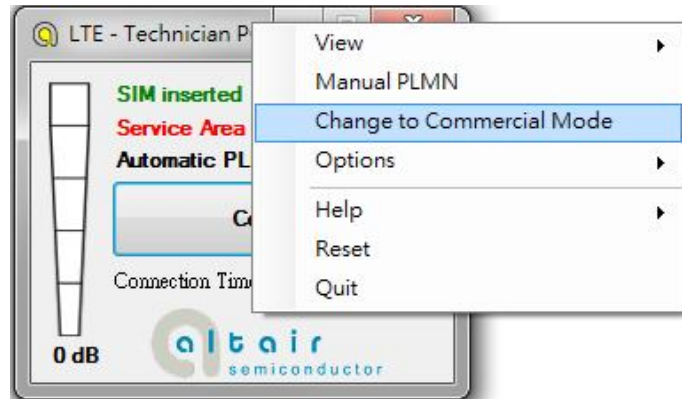


3. It's not necessary for you to select PLMN manually if you want to connect to network.

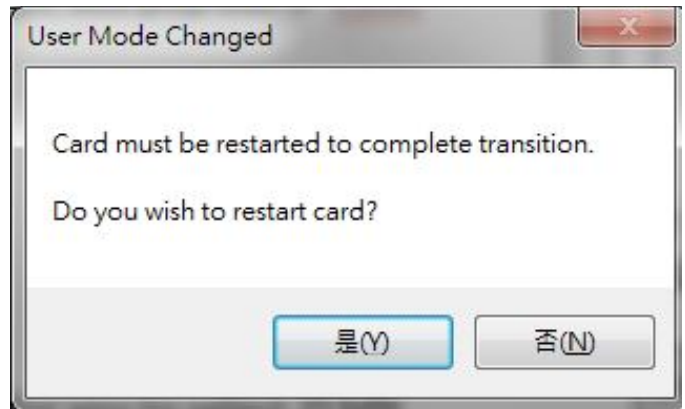


3.1.5. Change to Commercial Mode

1. Please right click on top of connection manager and select "Change to Commercial Mode".
2. Connection manager will pop out a "User Mode Changed" dialog.



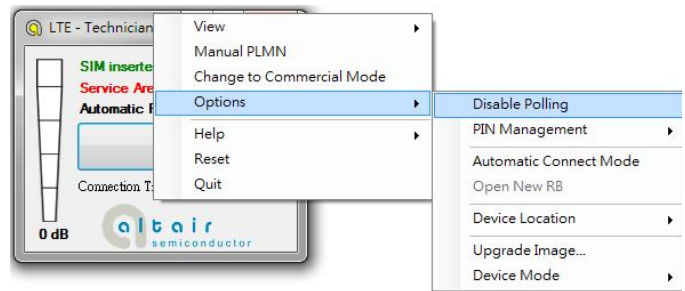
3. Please click "YES (Y)" button.



4. Please wait a few seconds for device to be ready.

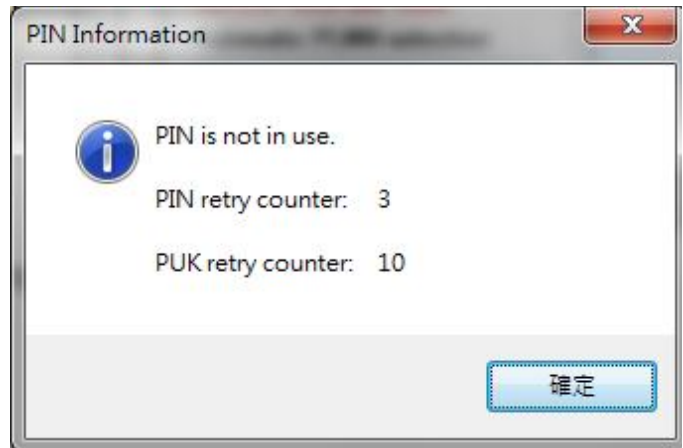
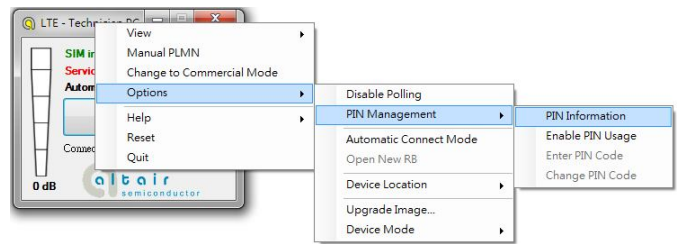
3.1.6. Disable Polling

1. Please right click on top of connection manager and select “Options→Disable Polling”.
2. Connection manager will stop searching for available network.

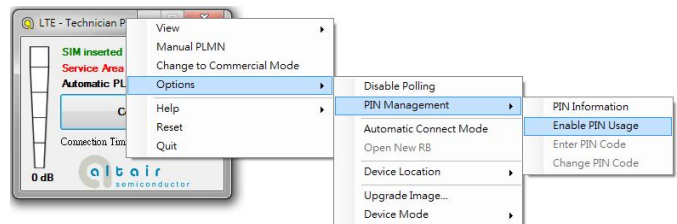


3.1.7. PIN Management

1. Please right click on top of connection manager and select
“Options→PIN Management→PIN Information”
to get PIN information.
2. Connection manager will pop out “PIN
Information” window.
3. Please click “OK” button.

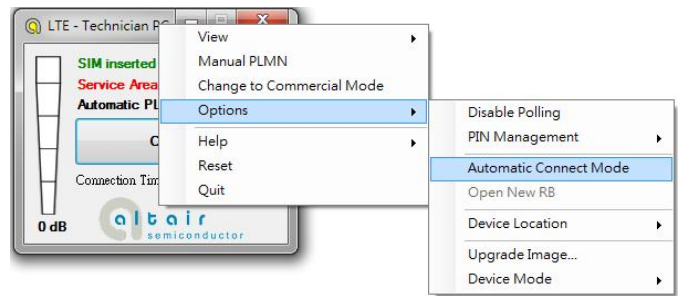


4. You also can enable PIN usage by right click on
top of connection manager and select
“Options→PIN Management→Enable PIN
Usage”.
5. Please input correct PIN code and click “OK”
button.



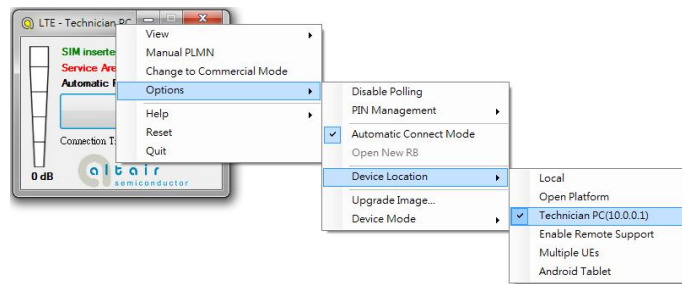
3.1.8. Automatic Connect Mode

1. Please right click on top of connection manager and select
“Options→Automatic Connect Mode” to switch connection manager from manual connect mode to automatic connect mode.
2. Connection manager will automatically connect to network.



3.1.9. Device Location

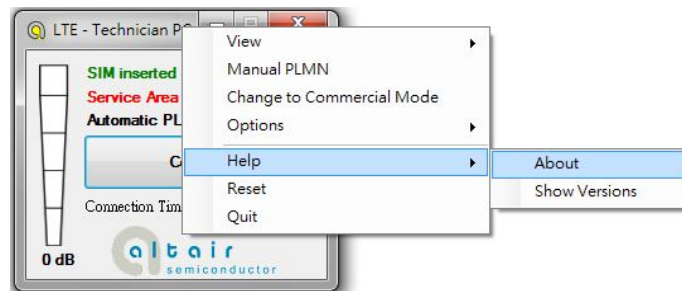
1. For Quanta hostless device, please use “Technician PC” only.
2. Please right click on top of connection manager and select “Options→Device Location→Technician PC”.
3. Please set IP address to “10.0.0.1” and click “OK” button.
4. Connection manager will get information from Quanta hostless device.



3.1.10. Help

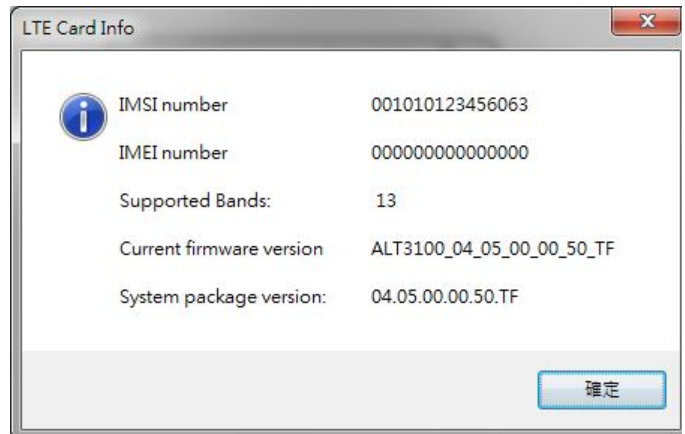
1. Please right click on top of connection manager and select “Help→About”.

2. Connection manager will pop out a “LTE Card Info” message box.



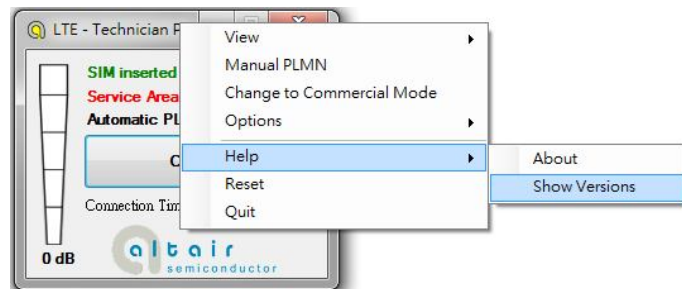
3. It will show information of IMSI number, IMEI number, Supported Bands, Current firmware version, and System package version.

4. Please click “OK” button.



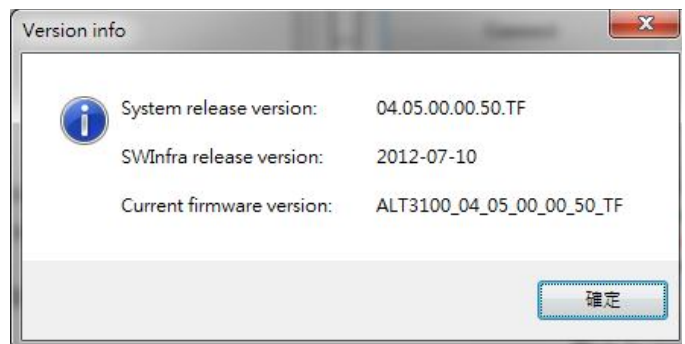
5. Please right click on top of connection manager and select “Help→Show Versions”.

6. Connection manager will pop out a “Version info” message box.



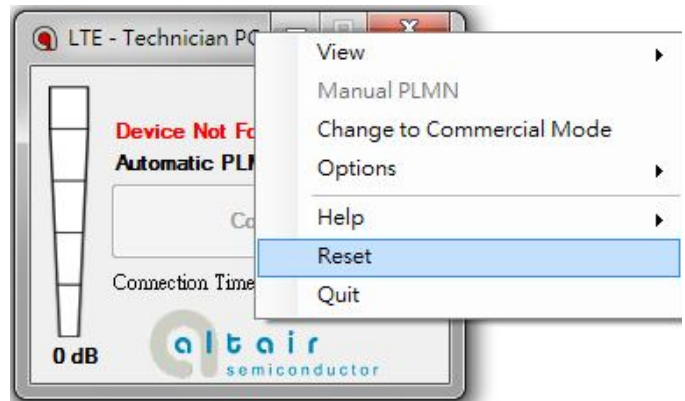
7. It will show information of System release version, SWInfra release version, and Current firmware version.

8. Please click “OK” button.



3.1.11. Reset

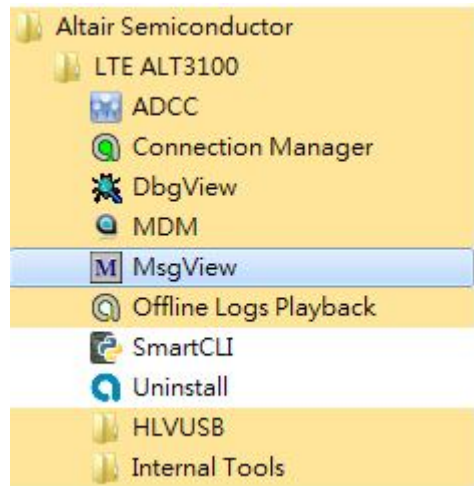
1. Please right click on top of connection manager and select "Reset".
2. Connection manager will pop out a "" message box.



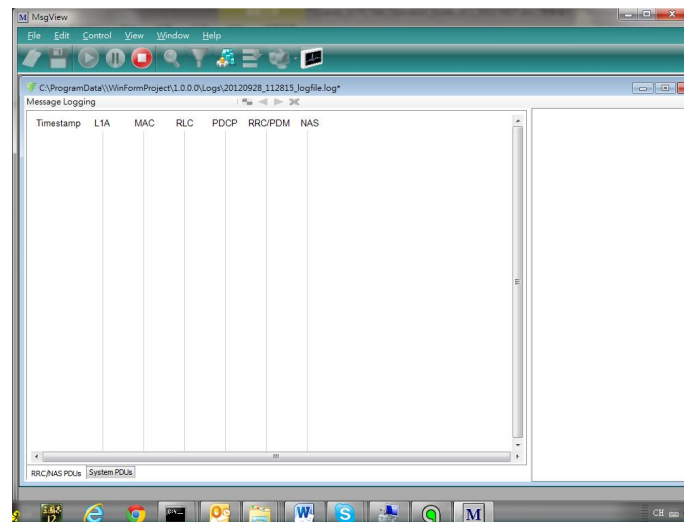
4. Diagnostic Tool

4.1. MsgView

1. Please open MsgView by clicking
Start→Programs→Altair Semiconductor→LTE
ALT3100→MsgView.

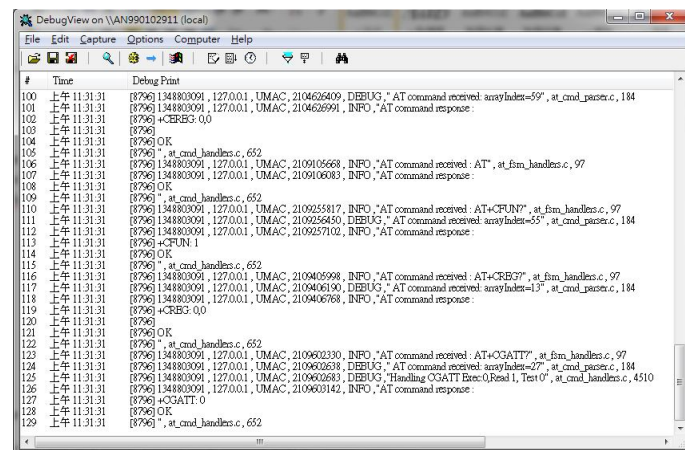
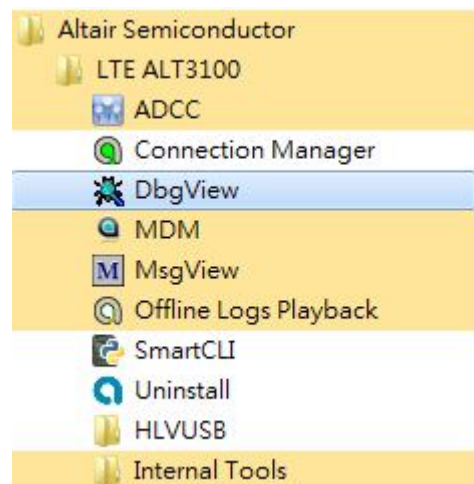


2. Please click “Start Logging” button to start message logging.
3. Please plug in Quanta device and wait a few seconds for device to be ready.
4. Once you find an issue, please stop testing and data logging, please save log file and send it to Quanta.



4.2. DbgView

1. Please open DbgView by clicking
Start→Programs→Altair Semiconductor→LTE
ALT3100→DbgView.
2. Please plug in Quanta device and wait a few
seconds for device to be ready, and the
DbgView will start data logging.
3. Please click “Save” button to save log to a file.
4. Once you find any issue, please stop testing and
data logging, and please send this log file to
Quanta.

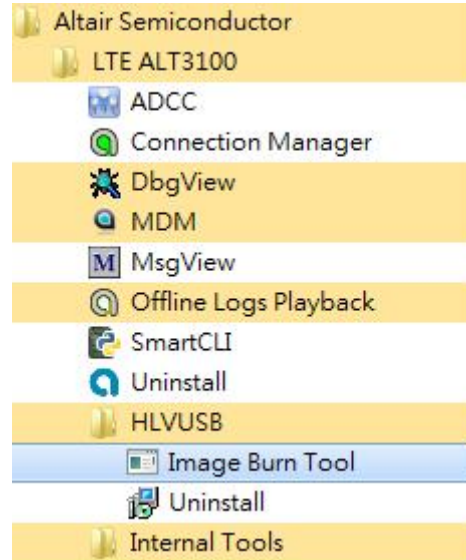


5. Firmware Upgrade

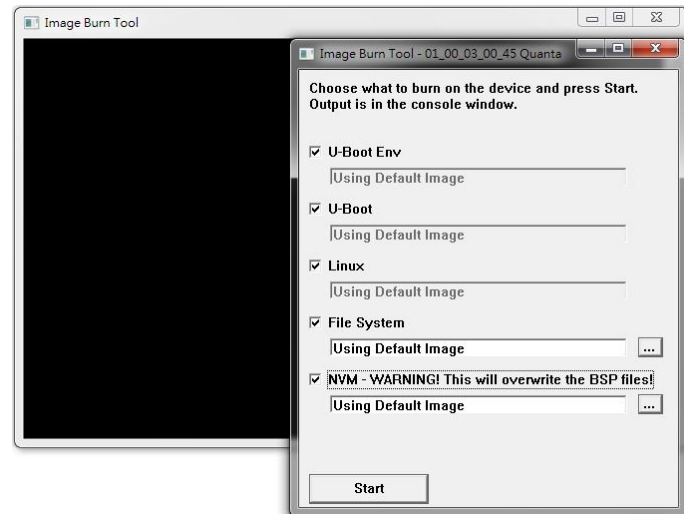
5.1. Image Burn Tool

1. Please click

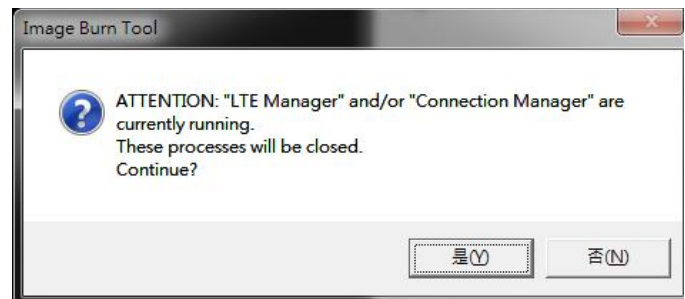
Start→Programs→Altair Semiconductor→LTE ALT3100→HLVUSB→Image Burn Tool.



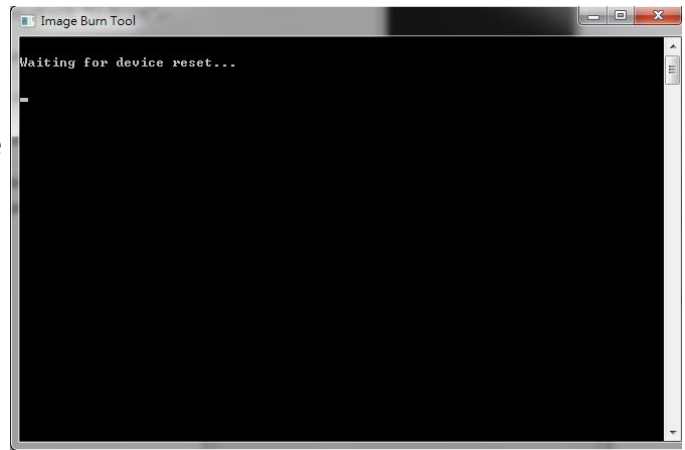
2. Please check “U-Boot Env”.
3. Please check “U-Boot”.
4. Please check “Linux”.
5. Please check “File System”.
6. Please check “NVM”.
7. Please click “Start” button to start firmware upgrade process.



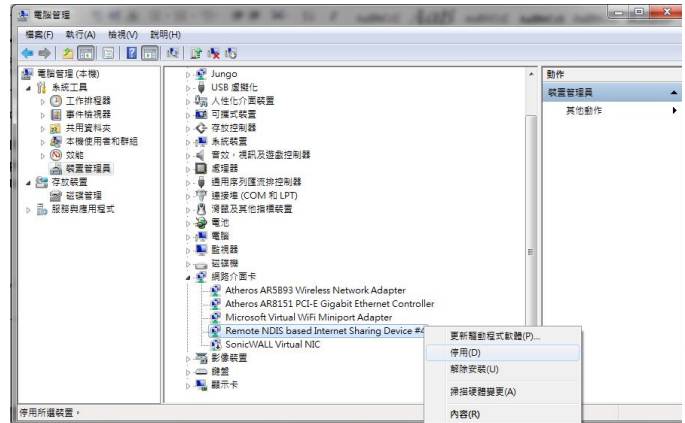
8. Please click “YES (Y)” button.



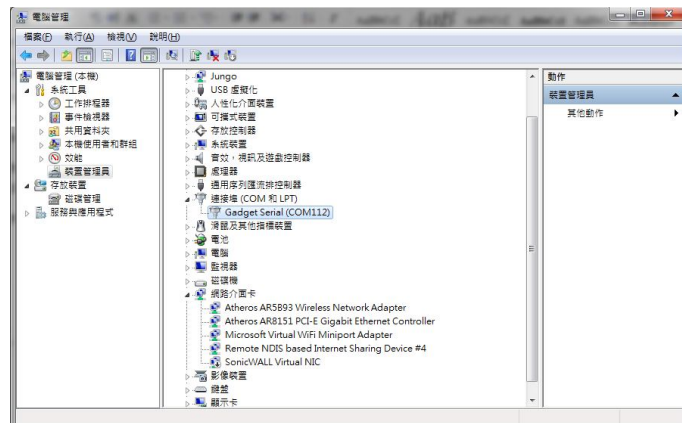
9. It will show message “Waiting for device reset ...”.
10. The easiest way to reset device is to power cycle device (i.e. to take out and plug in device).
11. If you are doing remote firmware upgrade process, please follow the following procedure to reset device.



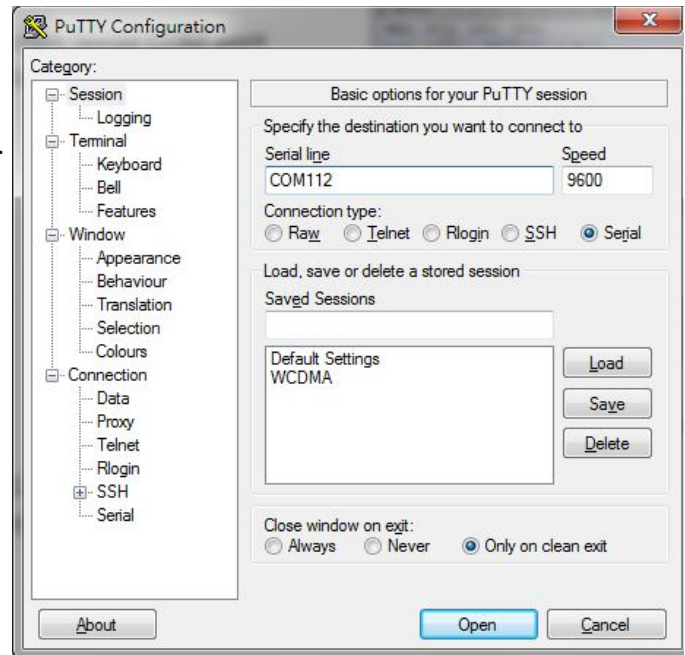
12. Please open device manager and find network interface of Quanta device “Remote NDIS based Internet Sharing Device #”.
13. Please disable this network interface by right click on it.
14. Please enable this device again.



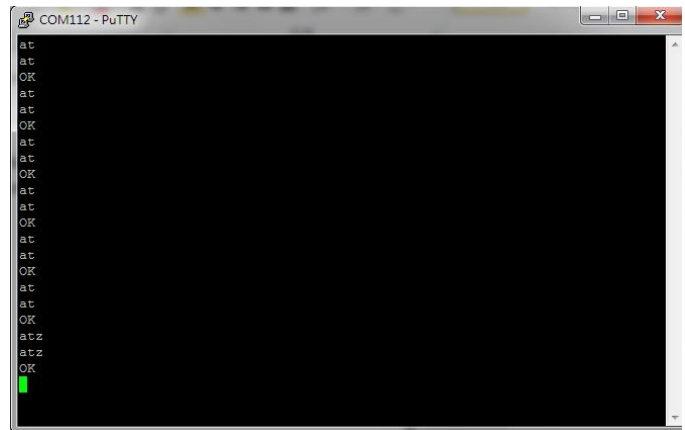
15. Please find your Gadget Serial COM port number (for example, COM112).



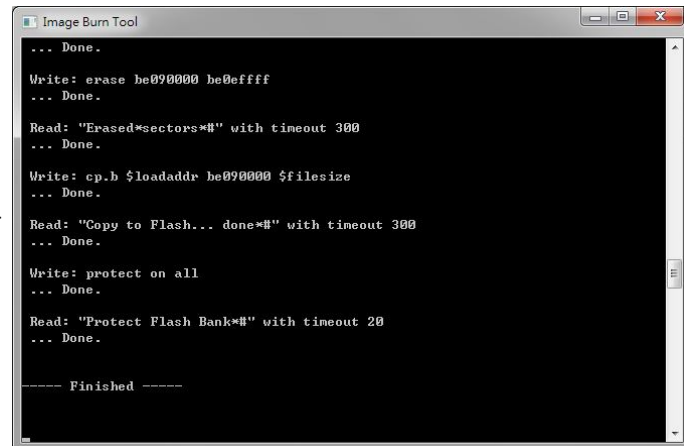
16. Please open COM112 COM port (for example, open it by putty.exe)
17. Please select "Serial" as your "Connection type".
18. Please fill in "COM112" as your "Serial line".
19. Please click "Open" button to set up connection.



20. Please enter "at".
21. Please check if it responds with "OK".
22. Please enter "atz" AT command to reboot Quanta device.



23. After Quanta device reboots successfully, the "Image Burn Tool" will start to do firmware upgrade process.
24. Please make sure you Quanta device has finished the firmware upgrade process with "---- Finished ----".
25. Please close "Image Burn Tool".
26. Please take out and plug in Quanta device.

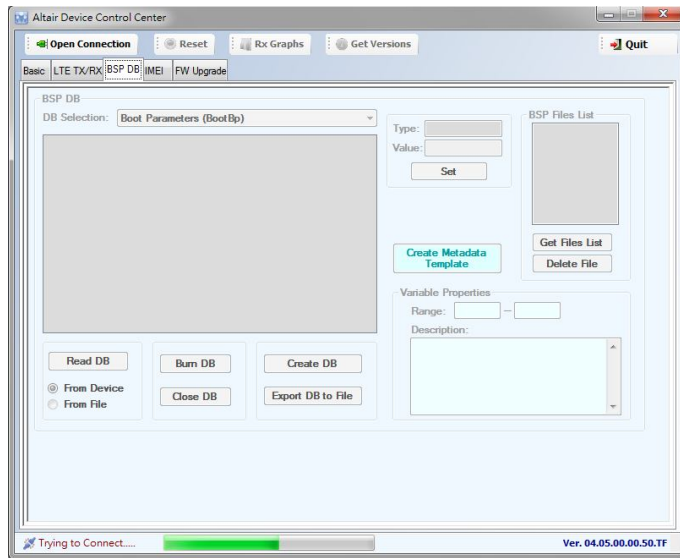


27. In order to recover the original calibration data, please use ADCC tool.

28. After the device reboot successfully, please open “Altair Device Control Center” by clicking, Start→Programs→Altair Semiconductor→LTE ALT3100→ADCC.

29. Please click “Open Connection” and wait for a few minutes.

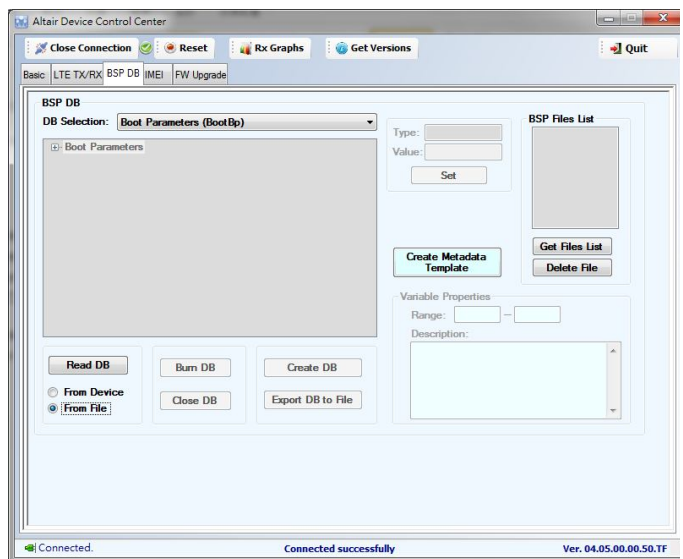
30. Please click “BSP DB” tab.



31. Please select “Boot Parameters (Boot Bp)”.

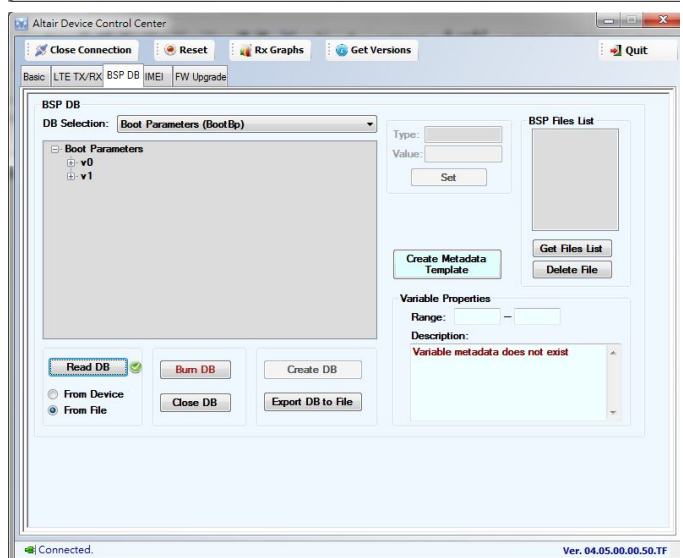
32. Please select “From File”.

33. Please click Read DB and find the source DB and click “Open” button to read it.



34. Please click “Burn DB” button to start burning.

35. Please repeat this procedure to burn the other DBs.



6. OMA-DM

6.1. Mandatory Configuration

1. It's necessary to configure Quanta device with the following parameters before you start OMA-DM testing.
2. It's mandatory to configure Quanta device with the following parameters if your device is upgraded to new firmware.
3. Please make sure that the device is not connected to LTE network (i.e. offline from eNodeB) before you do any configuration.
4. Please open connection manager.
5. Please enter the following AT commands sequentially (Please refer section 3.1.2).

AT%SETCFG="enable_test_mode","0"

AT%SETCFG="vzw_mode","1"

AT%SETACFG=ecm.Mode.VzwMode,true

AT%SETACFG=ecm.Mode.VzwImsTestMode,false

6. Please check if it returns "OK".
7. Please confirm your configuration by entering the following AT commands sequentially.

AT%GETCFG="enable_test_mode"

(it shall be "0")

AT%GETCFG="vzw_mode"

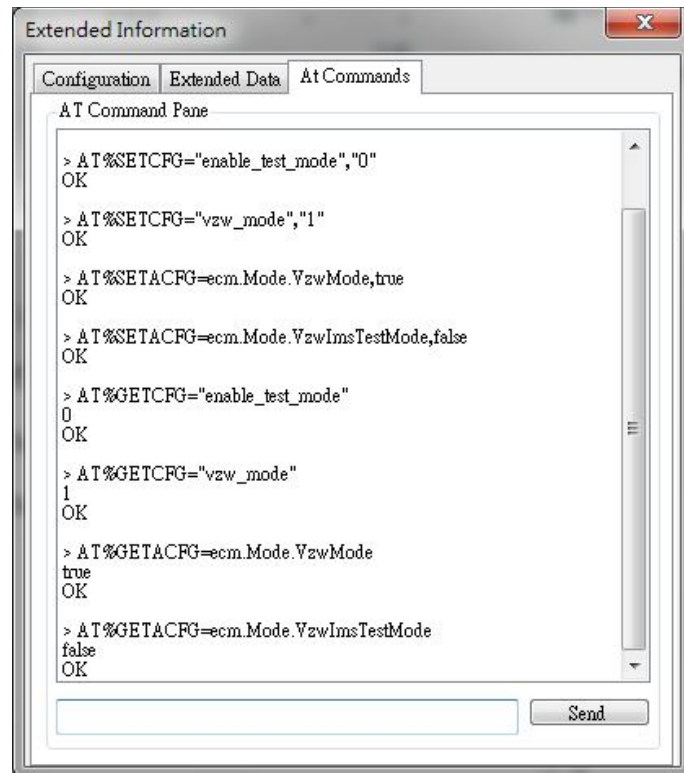
(it shall be "1")

AT%GETACFG=ecm.Mode.VzwMode

(it shall be "true")

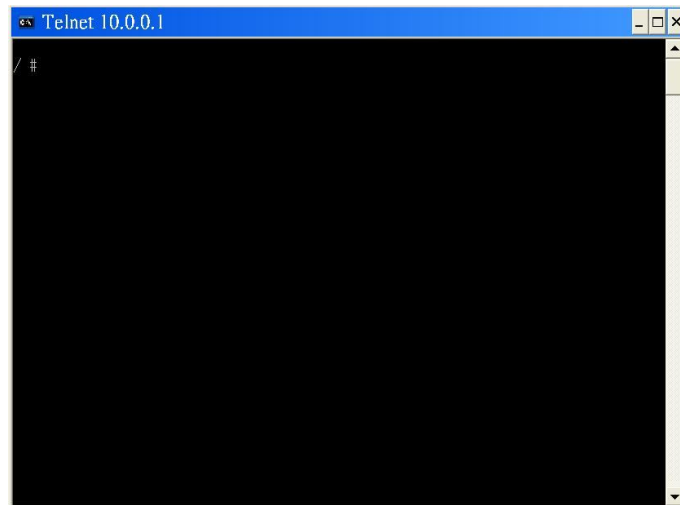
AT%GETACFG=ecm.Mode.VzwImsTestMode

(it shall be "false")

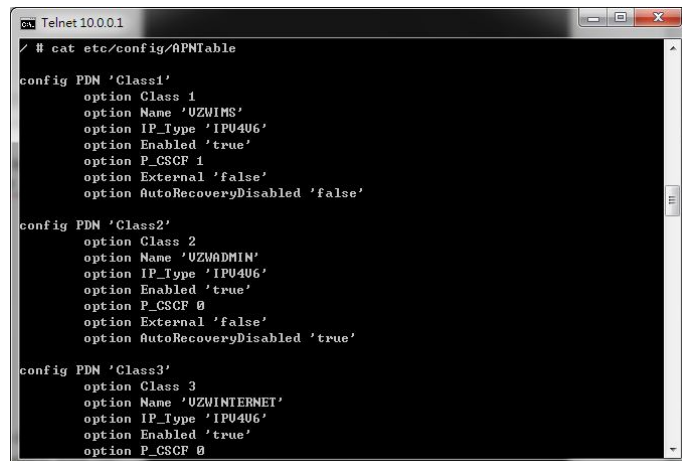


6.2. How to Enable/Disable APN

1. Please make sure your device has disconnected from network.
2. If you would like to edit APN table, it's necessary to telnet to embedded connection manager. (Please refer to section 3.1.1)
3. Please open command console.
4. Please key in "telnet 10.0.0.1" and press enter.
5. If you failed to telnet 10.0.0.1, please manually set your IP address to 10.0.0.133.
6. After successfully telnet to 10.0.0.1, please key in "cat /etc/config/APNTable" and press enter.
7. There are 4 APNs in table, and you can see its configurations, including NAME, IP_Type, P_CSCF and so on.
8. For example, if you would like to disable "VZWIMS" APN, please use the editor tool "vi" to edit this APNTable.
9. Therefore, please key in "vi /etc/config/APNTable" and press enter.



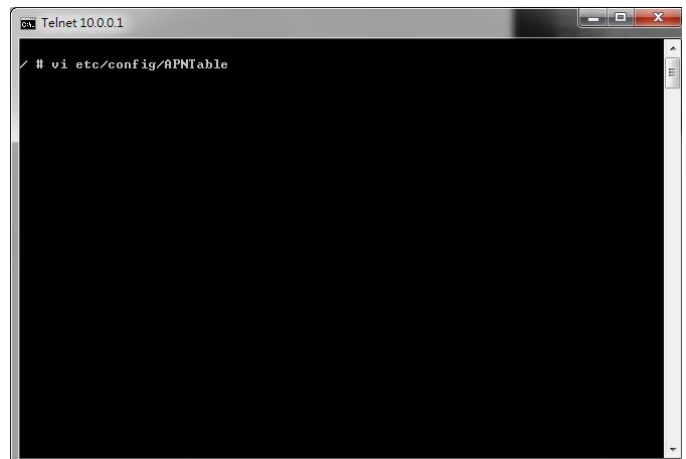
```
Telnet 10.0.0.1
/ #
```



```
Telnet 10.0.0.1
/ # cat /etc/config/APNTable
config PDM 'Class1'
  option Class 1
  option Name 'UZWIMS'
  option IP_Type 'IPV4V6'
  option Enabled 'true'
  option P_CSCF 1
  option External 'false'
  option AutoRecoveryDisabled 'false'

config PDM 'Class2'
  option Class 2
  option Name 'UZWADMIN'
  option IP_Type 'IPV4V6'
  option Enabled 'true'
  option P_CSCF 0
  option External 'false'
  option AutoRecoveryDisabled 'true'

config PDM 'Class3'
  option Class 3
  option Name 'UZWINTERNET'
  option IP_Type 'IPV4V6'
  option Enabled 'true'
  option P_CSCF 0
```



```
Telnet 10.0.0.1
/ # vi /etc/config/APNTable
```

10. Please move cursor to
Option Enabled **“true”**
11. Please modify this value to **“false”**.

NOTE: If you are not familiar with vi commands, please refer to section 6.6 for more information.
12. Please enter **“Shift+z”** twice to save file.
13. Please key in
“cat /etc/config/APNTable” and press enter.
14. Please check if **“VZWIMS”** APN is disabled.

Option Enabled ‘false’
15. Please enter **“reboot”** command to reboot device in order to take effect of the configuration.
16. You can also follow above procedures to enable/disable other APNs.

NOTE: Please make sure to reboot device in order to take effect of your setting.

```

Telnet 10.0.0.1
config PDN 'Class1'
option Class 1
option Name 'VZWIMS'
option IP_Type 'IPV4V6'
option Enabled 'true'
option P_CSCF 1
option External 'false'
option AutoRecoveryDisabled 'false'

config PDN 'Class2'
option Class 2
option Name 'VZWADMIN'
option IP_Type 'IPV4V6'
option Enabled 'true'
option P_CSCF 0
option External 'false'
option AutoRecoveryDisabled 'true'

config PDN 'Class3'
option Class 3
option Name 'VZWINTERNET'
option IP_Type 'IPV4V6'
option Enabled 'true'
option P_CSCF 0
- /etc/config/APNTable 1/36 2%

```

```

Telnet 10.0.0.1
# cat /etc/config/APNTable
config PDN 'Class1'
option Class 1
option Name 'VZWIMS'
option IP_Type 'IPV4V6'
option Enabled 'false'
option P_CSCF 1
option External 'false'
option AutoRecoveryDisabled 'false'

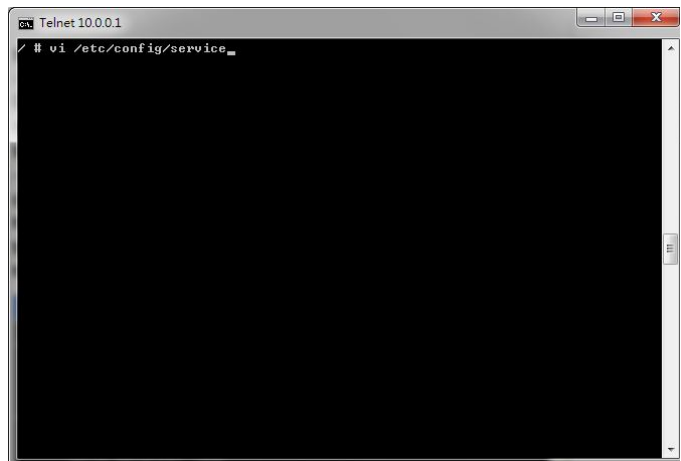
config PDN 'Class2'
option Class 2
option Name 'VZWADMIN'
option IP_Type 'IPV4V6'
option Enabled 'true'
option P_CSCF 0
option External 'false'
option AutoRecoveryDisabled 'true'

config PDN 'Class3'
option Class 3
option Name 'VZWINTERNET'
option IP_Type 'IPV4V6'
option Enabled 'true'
option P_CSCF 0

```


6.3. How to Modify OMA-DM Server URL

1. Please make sure your device has disconnected from network.
2. If you would like to edit OMA-DM server URL, it's necessary to telnet to embedded connection manager. (Please refer to section 3.1.1)
3. Please open command console.
4. Please key in **"telnet 10.0.0.1"** and press enter.
5. If you failed to telnet 10.0.0.1, please manually set your IP address to 10.0.0.133.

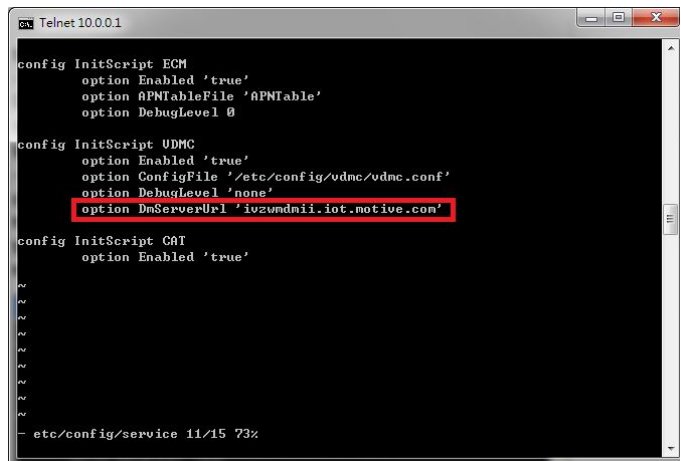


6. Please key in **"vi etc/config/service"** and press enter.

7. Please modify the server URL to

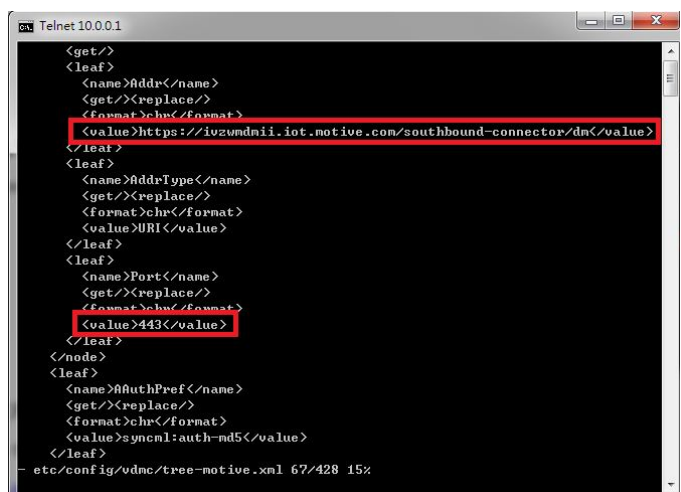
"ivzwmdmii.iot.motive.com"

8. Please enter **"Shift+z"** twice to save file.
9. Please key in **"cat /etc/config/service"** and check if the server URL is set up correctly.



10. Please key in **"vi etc/config/vdmc/tree-motive.xml"**

and press enter.



11. Please key in **"/https"** to search the server URL.
12. Please modify the server URL to

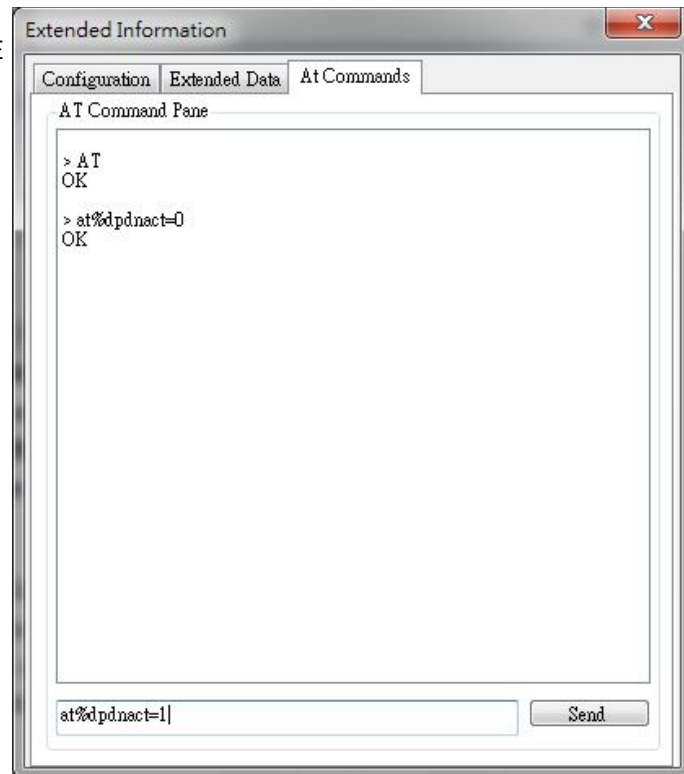
<https://ivzwmdmii.iot.motive.com/southbound-connector/dm>

13. Please also check if port number is “**443**”.
14. Please enter “**Shift+z**” twice to save file.

6.4. How to Online Enable/Disable Internet APN

1. Please check if your device has connected to LTE network successfully.
2. If you would like to online enable/disable "INTERNET" APN (see NOTE), it's necessary to enter specific AT command.

NOTE: Online enable/disable "INTERNET" APN means it's not mandatory to reboot device to take effect of "INTERNET" APN. Please note that this method is applicable to "INTERNET" APN only, and this configuration will be lost after device reboots.



3. If you enter "at%dpdnact=0" to disable "INTERNET" APN, the LTE connection will be lost. On the contrary, if you enter "at%dpdnact=1" to enable "INTERNET" APN, device will reconnect to LTE network.

6.5. How to Enable/Disable OMA-DM log

1. Please make sure your device has disconnected from network.
2. If you would like to enable/disable OMA-DM log, it's necessary to telnet to embedded connection manager. (Please refer to section 3.1.1)
3. Please open command console.
4. Please key in **"telnet 10.0.0.1"** and press enter.
5. If you failed to telnet 10.0.0.1, please manually set your IP address to 10.0.0.133.
6. Please key in **"vi etc/config/service"** and press enter.
7. Please modify the value of DebugLevel to **"debug"**.
8. Please enter **"Shift+z"** twice to save file.
9. Please enter **"reboot"** command to reboot device.

```

Telnet 10.0.0.1
# vi /etc/config/service
    
```

```

Telnet 10.0.0.1
config InitScript ECM
  option Enabled 'true'
  option APNTableFile '/APNTable'
  option DebugLevel 0

config InitScript UDMC
  option Enabled 'true'
  option ConfigFile '/etc/config/vdmc/vdmc.conf'
  option DebugLevel 'debug'
  option DmServerURL 'https://ivzwdmii.iot.notive.com/southbound-connecto

config InitScript GAT
  option Enabled 'true'

~
~
~
~
~
~
~
~
~
~
~
~
~

/etc/config/service [Modified] 10/15 66%
    
```

10. Please enter **"cat /tmp/vdm.log"** and check OMA-DM logs.

```

Telnet 10.0.0.1
# cat /tmp/vdm.log

***** LOGGER INITIALIZED *****
Wed Dec 31 17:00:21 1969 (283) e/core/src/vdm_api.c. 289: [Core_MsgQ] UDM_creat
e: vdm version is 4.00.00.31
Wed Dec 31 17:00:22 1969 (283) dmc_cmdline_parser.c. 42: [DMC] Parsing command
line arguments...
#
    
```

6.6. How to Use VI editor

Please google search “vi manual” or by clicking below URL directly.

<http://glaciated.org/vi/>