

FCC Part 15

This device complies with Part 15 of the FCC Rules. Operation is subject to the following two conditions: (1) This device may not cause harmful interference, (2) This device must accept any interference received, including interference that may cause undesired operation.

FCC Part 15 Class B-specific

Note: This equipment has been tested and found to comply with the limits for a Class B digital device, pursuant to part 15 of the FCC Rules. These limits are designed to provide reasonable protection against harmful interference in a residential installation. This equipment generates, uses and can radiate radio frequency energy and, if not installed and used in accordance with the instructions, may cause harmful interference to radio communications. However, there is no guarantee that interference will not occur in a particular installation. If this equipment does cause harmful interference to radio or television reception, which can be determined by turning the equipment off and on, the user is encouraged to try to correct the interference by one or more of the following measures:

- Reorient or relocate the receiving antenna.
- Increase the separation between the equipment and receiver.
- Connect the equipment into an outlet on a circuit different from that to which the receiver is connected.
- Consult the dealer or an experienced radio/TV technician for help.

FCC Warning

Changes or modifications not expressly approved by the party responsible for compliance could void the user's authority to operate the equipment.

Radiation Exposure Statement

This equipment complies with the FCC RF radiation exposure limits set forth for an uncontrolled environment. This equipment should be installed and operated with a minimum distance of 20 centimeters between the radiator and your body. This transmitter must not be co-located or operating in conjunction with any other antenna or transmitter.

Clover Network, Inc.

415 N Mathilda Ave, Sunnyvale, CA 94085, USA

EU Declaration of Conformity

Hereby, Clover Network, Inc. declares that the radio equipment type, C500 & P550 are in compliance with Directive 2014/53/EU. The full text of the EU declaration of conformity is available at the following internet address:
help.clover.com/eu-compliance

The frequency band and the maximum transmitted power in EU are listed below:

WLAN (C500)

2400MHz - 2483.5MHz: 19.5 dBm (EIRP)

5150MHz – 5250MHz: 21 dBm (EIRP)

5250MHz – 5350MHz: 21.5 dBm (EIRP)

5470MHz – 5725MHz: 22 dBm (EIRP)

NFC (P550)

NFC is only turned on within 60s when the contactless payment will be made and its max. power is 26 dBuA/m at 3m.

Restrictions in AT/BE/BG/CZ/DK/EE/FR/DE/IS/IE/IT/EL/ES/CY/LV/LI/LT/LU/HU/MT/NL/NO/PL/PT/RO/SI/SK/TR/FI/SE/CH/UK/HR. 5150MHz-5350MHz is for indoor use only.

Caution: Exposure to Radio Frequency Radiation

This equipment complies with EU radiation exposure limits set forth for an uncontrolled environment. This equipment should be installed and operated with minimum distance 20cm between the radiator & your body.

Tablet:

Model: C500

FCC ID: HFS-C500

Printer:

Model: P550

FCC ID: HFS-P550

Printer (Optional):

Model: P500

EU Importer

Marketplace Merchant Solutions Ltd

Unit 9, Richview Office Park, Clonskeagh, Dublin 14, Ireland

Waste Electrical and Electronic Equipment-WEEE

NOTE: This product is covered electronic equipment under the European Union's Waste from Electrical and Electronic Equipment ("WEEE") Directive (2012/19/EU). The WEEE Directive requires that covered equipment be collected and managed separately from typical household waste in all EU member states. Please follow the guidance of your local environmental authority or ask the shop where you purchased the product for collection or recycling options.



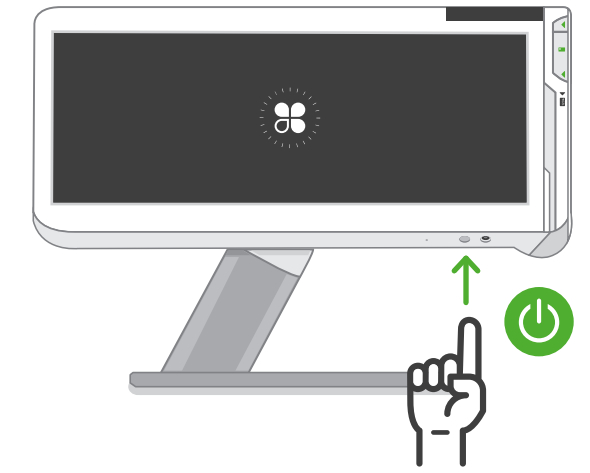
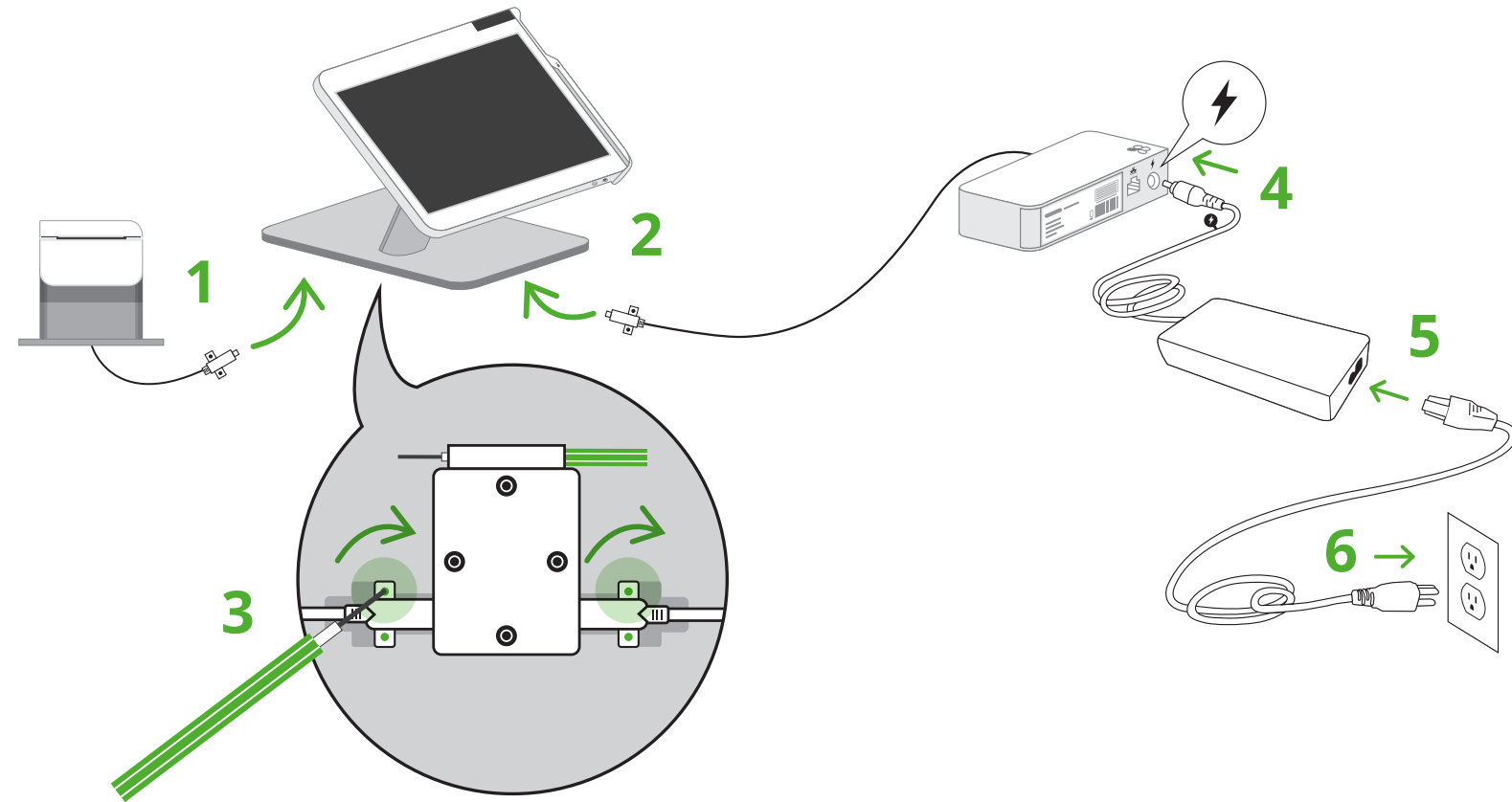
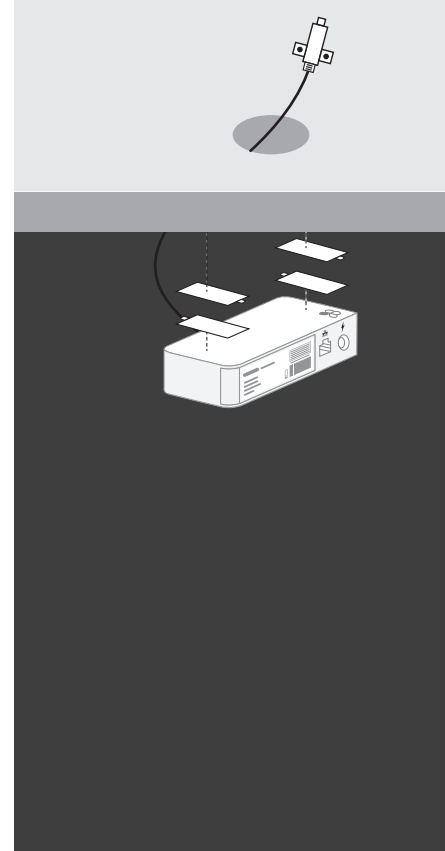
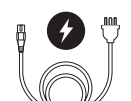
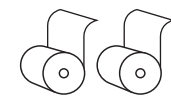
Clover Station



Quick Start Guide

Kurzanleitung • Instructions de démarrage

Guía de inicio rápido • Guida introduttiva



Press power button until Clover logo appears.
Einschalttaste gedrückt halten bis Clover logo erscheint.
Appuyez sur le bouton d'alimentation jusqu'à ce que le logo Clover s'affiche.
Presione el botón de encendido hasta que el logo de Clover aparezca.
Tenere premuto il tasto di alimentazione fino a quando non compare il logo Clover.

U.S.A: clover.com/setup
Europe: eu.clover.com/setup