

***7"  
PDA  
User's Guide***

***Product name: MID  
Model name: QV1***

---

# *7" PDA User's Guide*

---

## **1. Introduction**

---

---

---

This User's Guide provides detailed information to assist you in operating your 7" PDA. Basic setup and software application procedures using the Microsoft Windows CE (WinCE) operating system are also provided.

### **1.1 Safety Information**

#### **General Warnings:**

- Only use the 5V power supply provided in the packaging.
- Keep this product away from water, humidity and moisture to prevent damage and the possibility of fire or electric shock.
- Do not apply excessive pressure on the display screen.
- Handle product with care and avoid trauma to the product.
- Only use the touch pen provided in the packaging and avoid using other tools which may damage the surface of the screen.
- Avoid excessive movement of the tablet while it is docked in the Docking Station.
- Use care when rotating the camera lens.

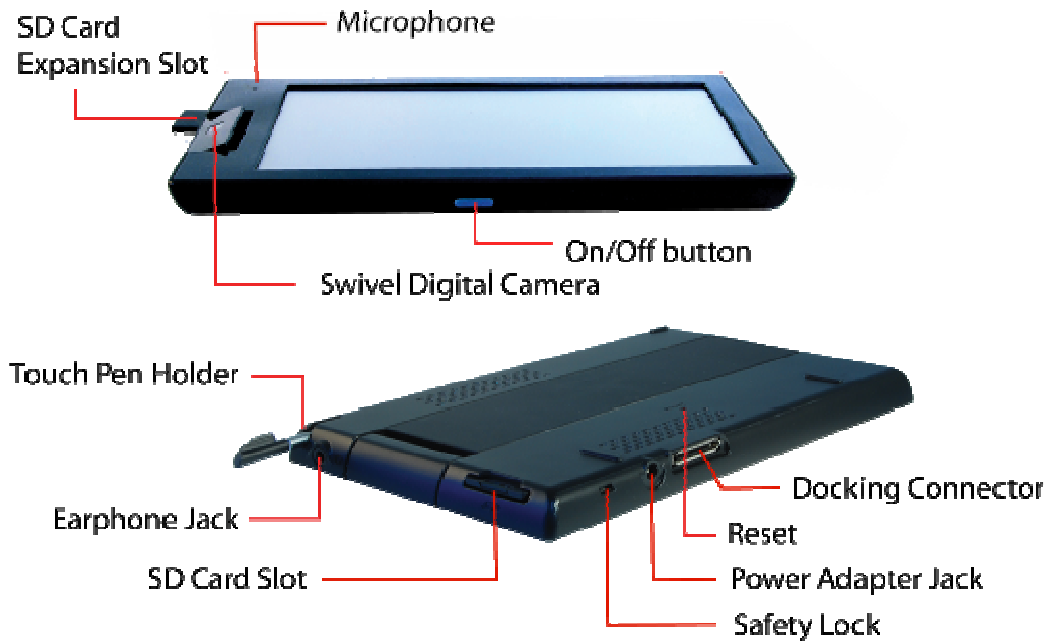
## 1.2 Table of Contents

<b>1</b>	<b>Introduction .....</b>	<b>2</b>
1.1	Safety Information .....	2
1.2	Table of Contents .....	3
1.3	Overview .....	4
1.4	Specifications .....	5
1.5	Package Content Checklist .....	5
<b>2</b>	<b>Getting Started .....</b>	<b>6</b>
<b>3</b>	<b>Basic Operations .....</b>	<b>7</b>
3.1	Turning the device on/off .....	7
3.2	Setting the Date and Time .....	8
3.3	Taking Photos with the Swivel Digital Camera .....	8
3.4	Orientation of the Windows Desktop .....	10
3.5	Memory Card .....	10
3.6	Touch Pen Hints - Left and Right clicks .....	10
3.7	Docking Station - Audio and USB .....	11
3.8	Software Keyboard .....	12
3.9	Connecting to the network and other devices .....	13
	• Making a wireless connection to a wireless hub .....	13
	• Making a Bluetooth connection to another Bluetooth device .....	15
3.10	Internet Browser, Email, MSN messenger, Media Player and Word .....	17
3.11	Remote PC Connection .....	18
3.12	Battery - Recharging, Status, Power Management and Screen Saver .....	23
3.13	Recalibrating the Touch Panel .....	25
3.14	The Reset Button .....	27
<b>4</b>	<b>Reference .....</b>	<b>28</b>
4.1	Troubleshooting Guide .....	28
4.2	CE statement .....	28
4.3	FCC statement .....	31

### 1.3 Overview

The 7" PDA has been designed as a mobile internet device allowing convenient portability and timely internet access in addition to basic PC services. This product comes pre-installed with the WinCE 6.0 operating system which provides a Windows user interface. A touch pen along with the touch panel allow you to navigate the desktop. A software based keyboard is provided but the tablet can also be supplemented with a USB keyboard and mouse when attached to the docking station.

#### Basic Tablet Description



## 1.4 Specifications

- ARM926, 400MHz CPU
- Freescale i.MX27 + 13783
- 7" Touch Panel Screen (800x480)
- Mobile DDR 128MB
- NAND flash 128MB
- Video codec, VGA@30fps
- WiFi and Bluetooth support
- Battery: 10.8 Whr
- Power Adapter: 5V, 2.5A
- Tablet dimensions: 188.3x113x12.9 mm (w x l x h)
- Tablet Weight: 343g
- Docking Station with two USB 2.0 connectors, internal stereo speakers, line-in/line-out, volume control
- OS: Win CE6.0
- Swivel Camera 0.3/1.3M (180 degree rotation)
- Application features: Internet Browsing, MSN Chatting, Web based email, Word Pad, Media Player



\* Designs and Specifications are subject to change without notice.

## 1.5 Package Content Checklist

Check the package contents with items listed below:

- Tablet
- Docking Station
- Universal 5-V 2.5 A Power Adapter
- Touch Pen
- User's Manual (not pictured)



## 2 Getting Started

---

---

---

These steps describe how to power-on your tablet out of the box.

- 1) Before using the tablet for the first time, you must unlock the “**Safety Lock**” using the touch pen. The “Safety Lock” is located on the bottom of the tablet.



- 2) Then press the **On/Off button** that is located on top of the device (note that you have to keep the button depressed for about 1 second). If your tablet boots to Windows you may begin using your tablet PC.



- 3) If your tablet does not boot initially, you will have to charge the battery by attaching the power adaptor cable to the power connector at the bottom of the tablet. Attach the other end of the power adaptor to an electrical wall socket.

After you attach the power adaptor, the tablet will automatically boot up with the Win CE desktop appearing on the screen. You may begin using your tablet.

- 4) When not in use, simply press the on/off button on top of the tablet for 3 seconds to suspend operations. The tablet Windows environment can be quickly revived by depressing the on/off button again for at least 1 second.

# 3 Basic Operations

---

---

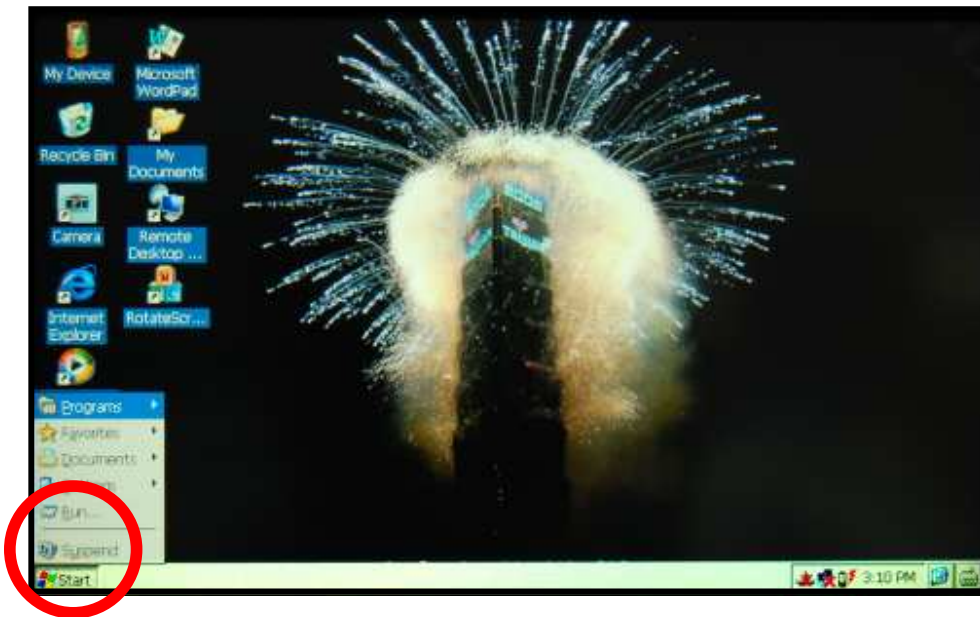
---

This chapter will describe basic operations for the tablet.

## 3.1 Turning the device on/off (Suspend/Power)

### To enter Suspend Mode

As mentioned, you must depress the **On/Off button** at the top of the tablet for 3 seconds and then release to enter the **Suspend** mode (the screen will go blank) . You may also choose the “Suspend” option from the Start Button located on the desktop at the lower left corner of the screen (Start Button -> Suspend). The “Suspend” mode is the normal operating state when not in use.



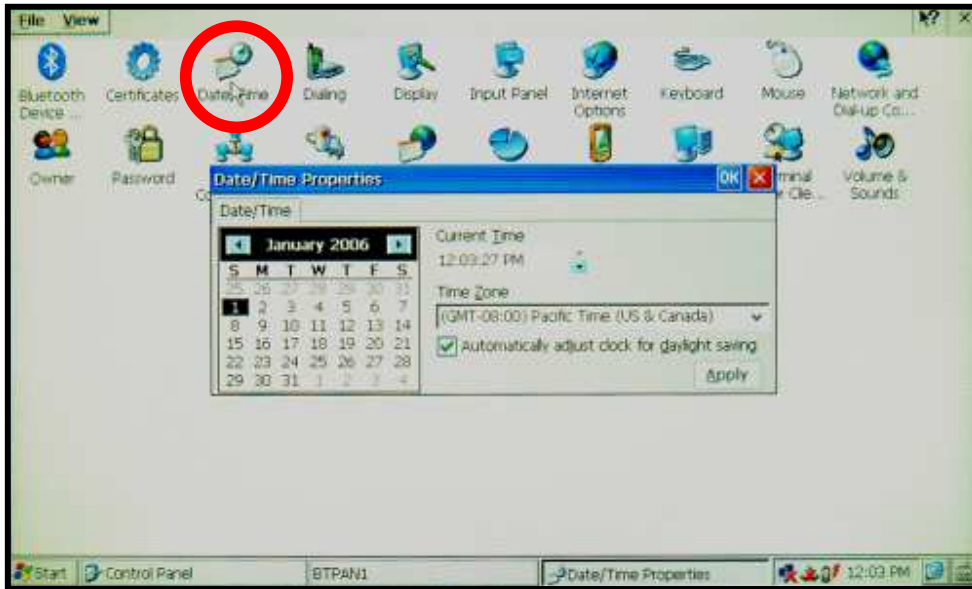
To resume from suspend mode, simply press the On/Off button on top of the tablet for at least 1 second to refresh the Windows desktop.

### Power off your tablet PC completely to reset Manufacturer Default Settings

As mentioned, this tablet PC was designed to stay in the “Suspend” mode when not in use. However, you can choose to power down completely by toggling the “**Safety Lock**” to the lock position but this constitutes a hardware reset and all of your previous settings such as the date/time will be set back to manufacturer defaults.

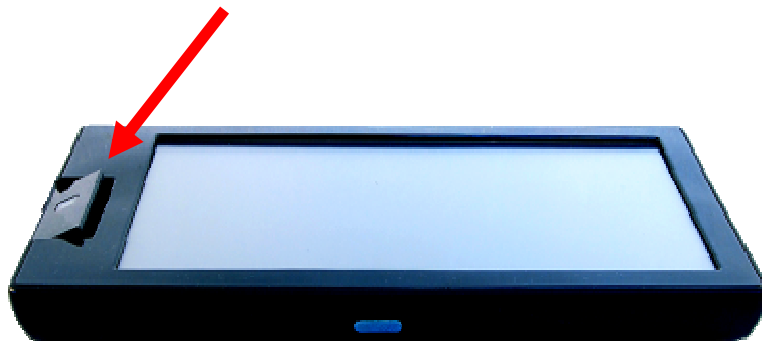
### 3.2 Setting the Date and Time

To set the date and time, go to Start Button→ Settings→ Control Panel→Date/Time. When the Date/Time Properties windows displays, use your touch pen to adjust the date/time accordingly.



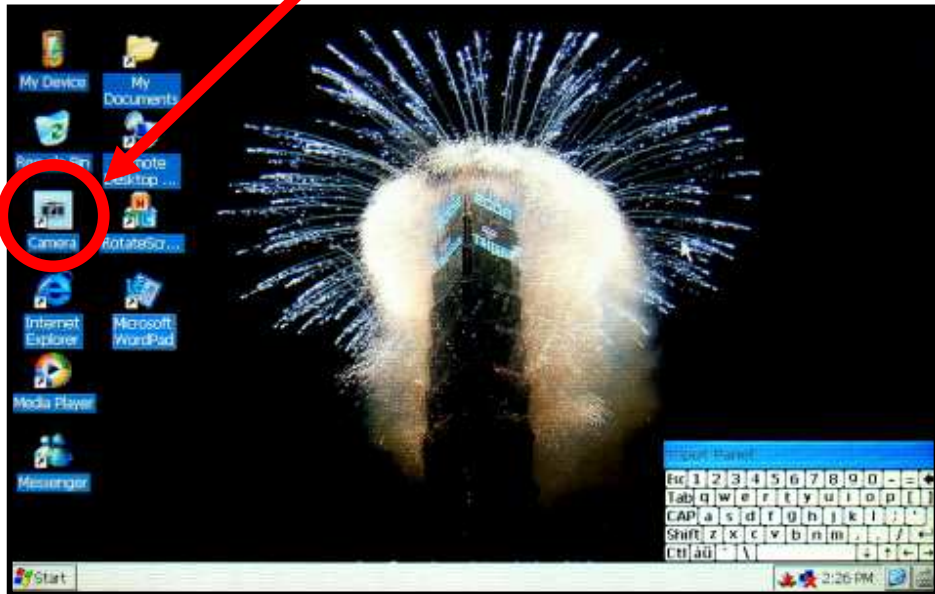
### 3.3 Taking Photos with the Swivel Digital Camera

This tablet features a 180° Swivel Digital Camera that you can rotate from front to back.





- a. To use the camera, double-click the “Camera” icon on the desktop to start-up the camera application program. This application can also be started from the “Start” button (Start Button →Programs→Demo Apps→Camera).

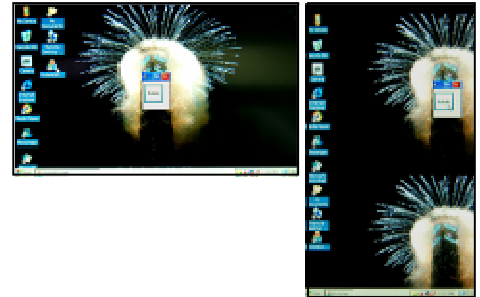


- b. The application will open in “preview mode”, displaying what the camera lens is currently capturing. Click the “Camera” icon in the lower right corner to take a picture. After the first picture you take in a session, the application will popup a subwindow to allow you to choose a location to store your picture. Subsequent pictures taken during that session are stored to the same location. Click the “Return” icon (icon with red arrow) in the lower right corner to exit the application program.

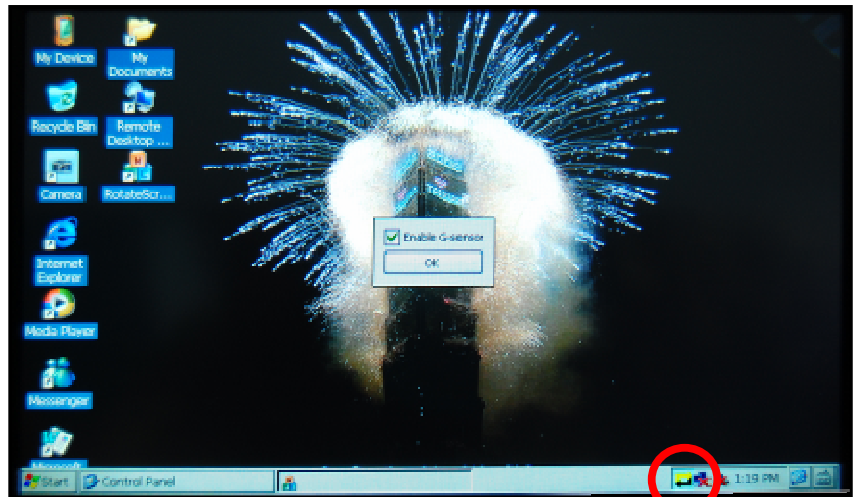


### 3.4 Orientation of the Windows Desktop

The Windows desktop will automatically reorient to a horizontal or vertical landscape depending on how you are holding the tablet. If you rotate the tablet, you will notice the Windows desktop immediately adjusting to the plane which you are holding the tablet in. You can also use the Rotate Screen application program whose icon is located on the desktop (RotateScr). When the Rotate popup window appears, click the Rotate button and the desktop will reorient 90° in a counter-clockwise direction.



You can choose to disable the auto-reorient feature by clicking on the G-sensor icon in the system tray (lower right corner as shown). A G-sensor popup window will appear and you simply need to uncheck the box to disable the feature.



### 3.5 Memory card

This product supports the SD memory card format. To access the contents of your card, click on the desktop icon "My Device" and then click on "SD Memory". The SD card can only fit into the slot in one way so do not use excessive force. Although you can insert and remove the SD card at anytime, it is recommended that you take care not to do so while any applications are running.



SD Card Slot

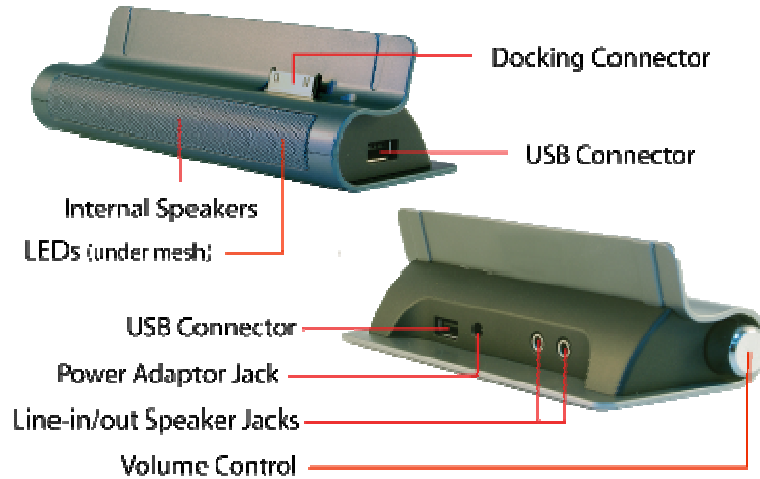
### 3.6 Touch Pen Hint – Left and Right clicks

When using the touch pen, you can simulate left and right clicks. A left click is simply tapping once on a line or an icon. A right click is simulated by using your touch pen and pressing until a right click action is executed (e.g. in the file manager, right clicking on a file causes a drop down menu to appear).



### 3.7 Docking Station – Audio and USB facilities

This tablet comes with a docking station, which is used to dock your tablet in an upright position to allow hands-free convenience. The **power adaptor must be attached** to the docking station to allow the tablet to use the USB ports and speakers on the docking station.



When you are connecting the tablet to the docking station, use the two knobs on the back of the tablet and the inverted guides on the docking station to guide the tablet onto the docking station. Make sure you accurately and gently lower tablet connector onto the docking connector on the docking station in order to prevent damage to both connectors.



There are **two LED indicators** embedded into the docking station and can be viewed through the mesh plate. The left LED illuminates to green when the docking station is connected to the power adaptor. The right LED illuminates when the tablet is attached – it illuminates to red when the tablet battery is recharging and it illuminates to green when the battery is fully charged.

The Docking Station offers two **USB 2.0** ports for such devices as flash drives, keyboards, mice etc. It can even support USB 2.0 hubs that allow you connect more than two USB devices at the same time. The docking station also has a volume control button, embedded speakers along with line in/out jacks (if you choose to use auxiliary external speakers).

When the tablet is docked and you wish to use **earphones**, you must attach the earphones to the line-out jack behind the docking the station (the earphone jack on the tablet is disabled while the tablet is docked).

### 3.8 Software keyboard

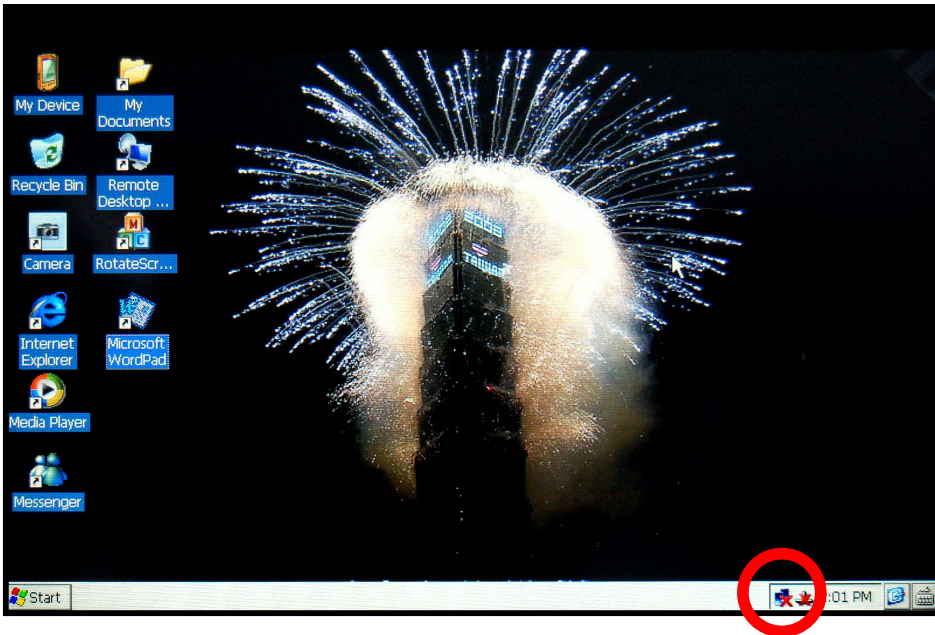
This tablet provides a virtual software keyboard that allows you to type characters as you would a normal keyboard. You can access the keyboard by clicking on the “Pen” icon (sometimes seen as a keyboard icon) located in the far lower right corner – a pull up menu will appear with three options; Large Keyboard (LargeKB) as shown below, Small Keyboard (Keyboard) and Hide Keyboard (Hide Input Panel).



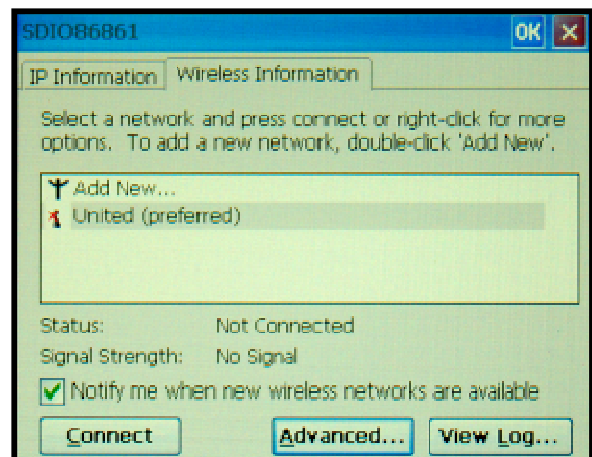
### 3.9 Connecting to the Network and other devices using the Wireless facilities

#### Making a wireless connection to a wireless hub.

- a. To connect the Wireless facility on the tablet to a local network (wireless hub), you must first locate the network icon in the system tray (at the bottom right corner of the desktop as shown). It will initially have a red "X" indicating that there is currently no network connection. Double click on the icon.



- b. The Window labeled "SDIO86861" will appear. Click the "Wireless Information" tab. On this tab, the rectangular box in the middle of the window will list all available wireless hubs in your vicinity (you may have to wait a few seconds while the device scans your local environment). In the example to the right, the only available wireless hub is named "United".
- c. After identifying the local wireless hub you want to connect to, click on the line (in the box) to highlight that name and then click the "Connect" button.



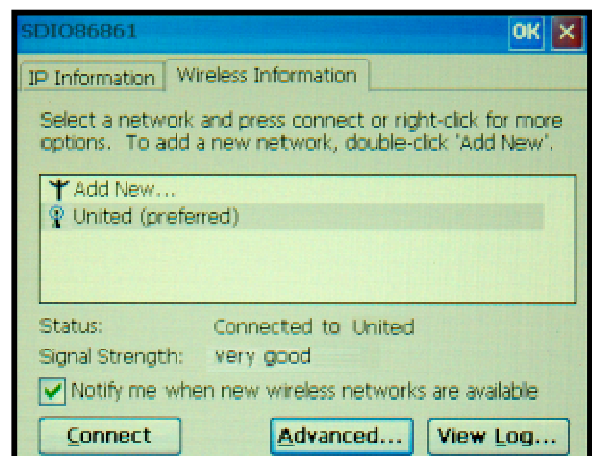
- d. On your very first connection to a hub, a “Wireless Network Properties” window will appear. A basic connection to a simple network hub is shown in the example to the right – most of the information will already be populated when this screen displays. Also note the boxes that are checked and those that are not checked. Press OK.

You will be returned to the original “SDIO86861” Window and the tablet will attempt to connect to the wireless hub automatically.

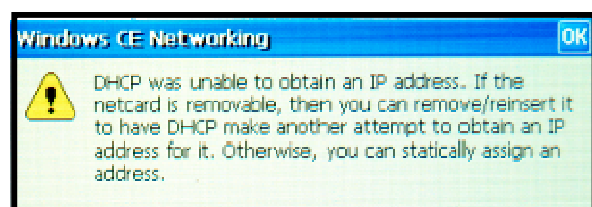
**Note:** The wireless environment you are accessing maybe be part of a corporate or public network – these networks may have certain characteristics that require further configuration such as an Encryption method (e.g. WEP), a “Network key” or IEEE 802.1X authentication. If so, contact the network administrator for further assistance.



- e. At the “SDIO86861” Window, the device will attempt to connect to the wireless hub. The status of the connection attempt will display next to the “Status” label. If your connection is successful, it will display “Connected to <name of hub>”. The “Signal Strength” label will indicate the strength of the signal – Low, Very Good, Excellent. Also notice the “Connected Icon” next to the “United” label in the center box. If the signal is low or you have intermittent connection problems, you may have to move closer to the wireless hub..



**Note:** The message to the right is just a warning message you may get while you are attempting to connect to a wireless hub. No action is necessary other than to tap the OK button.

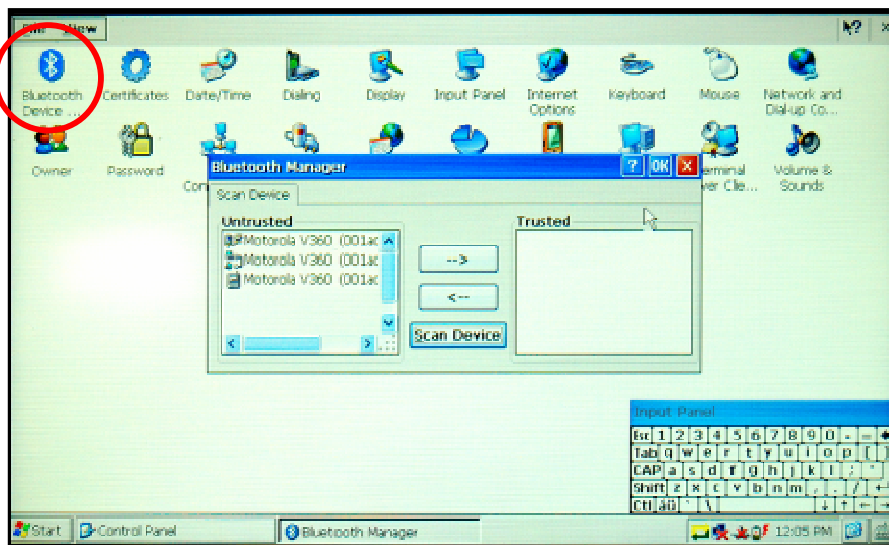


Making a Bluetooth connection to another Bluetooth device.

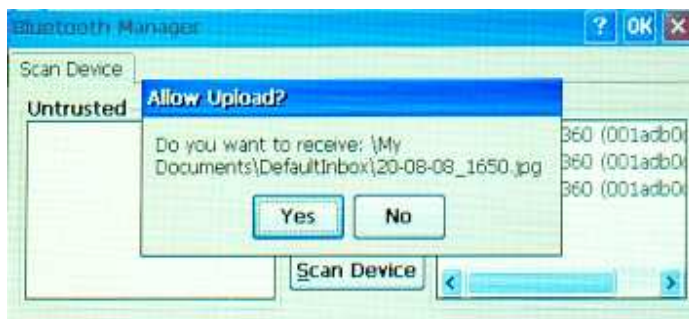
- a. Bluetooth connections can allow you to transfer files between two devices that have Bluetooth facilities. The Bluetooth facilities on the tablet PC are located at Start Button→Settings→Control Panel→Bluetooth Device.

After you click on the Bluetooth icon as show below, a “Bluetooth Manager” Window will display. If you click the “Scan Device” button, all of the Bluetooth devices in the vicinity will be listed. In the example below, the tablet PC has found a Motorola Cell Phone (all three devices listed are from a single cell phone) with its Bluetooth facilities enabled.

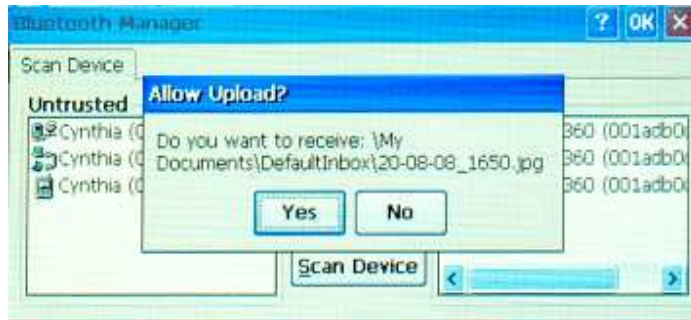
Highlight one line in the “Untrusted” devices box and then click the left-to-right arrow (→). Do the same for the other items listed for the same device.



- b. The tablet will then ask you if you want to authenticate with the other device. If you type yes, you will be asked for a pin number that you will most likely need to also validate on the other device. If you type No, there is no pin verification required.



- c. You may now transfer files from the other device to your tablet PC. When the file arrives, you will be prompted to accept the file into the default directory as shown below.



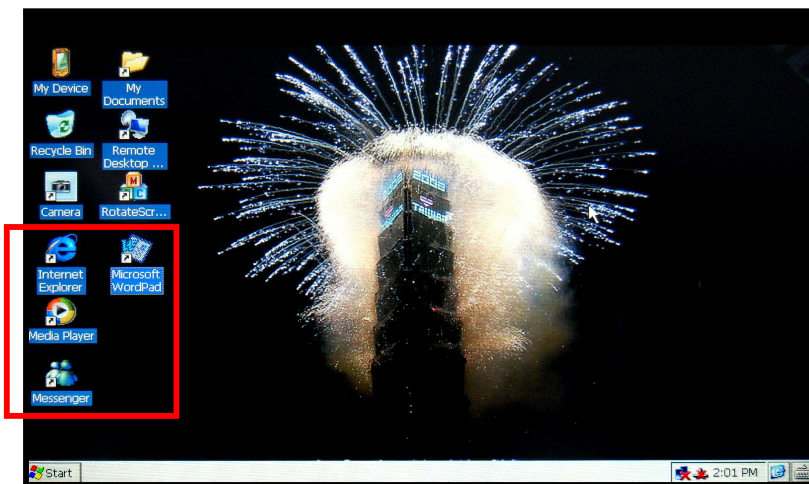


### 3.10 Internet Browsing, Email, MSN Messenger, Media Player, Word

This tablet PC comes with preloaded software to:

- Browse the Internet (Internet Explorer)
- Email (Using Internet Explorer and web based email such as hotmail, yahoo etc.)
- Chat (MSN Messenger)
- Playback Video and Audio (Media Player)
- Write (Word Pad)

These programs may be found directly on the desktop as shown below.



These applications can also be accessed from the Start Button (Start Button → Programs).



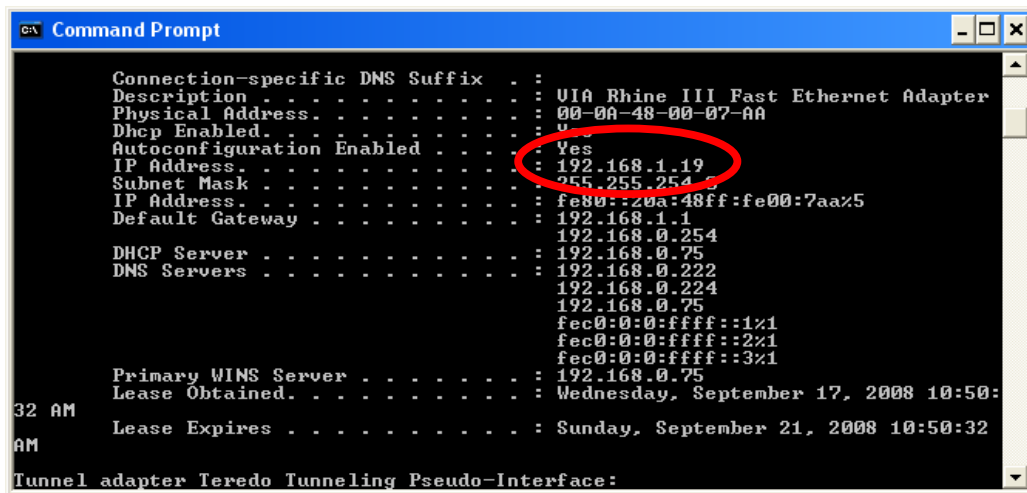
### 3.11 Remote PC Connection

This tablet PC has the ability to connect to your home desktop PC from anywhere on the world wide web and serve as a remote workstation allowing you access to all of your files and applications that you would normally have at your disposal from your personal desktop at home.

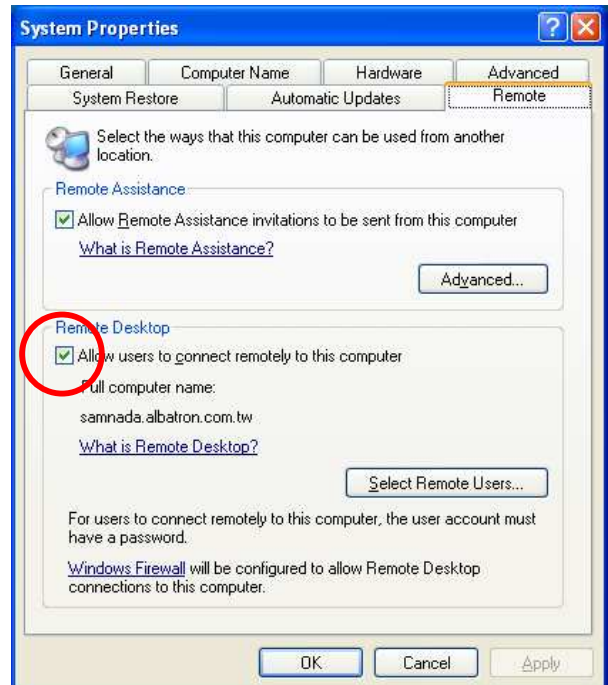
In other words, you can be in a different country and bring up your home PC desktop on your tablet PC as if you were at home. The only requirement is that your home PC is turned on and connected to a network.

How to setup up your home PC (Windows XP example) for a "Remote Workstation".

- a. First you have to obtain the IP address of your home PC. This is done by going to a DOS Command Prompt window and typing in "ipconfig /all". In the example below, the address is "192.168.1.19"

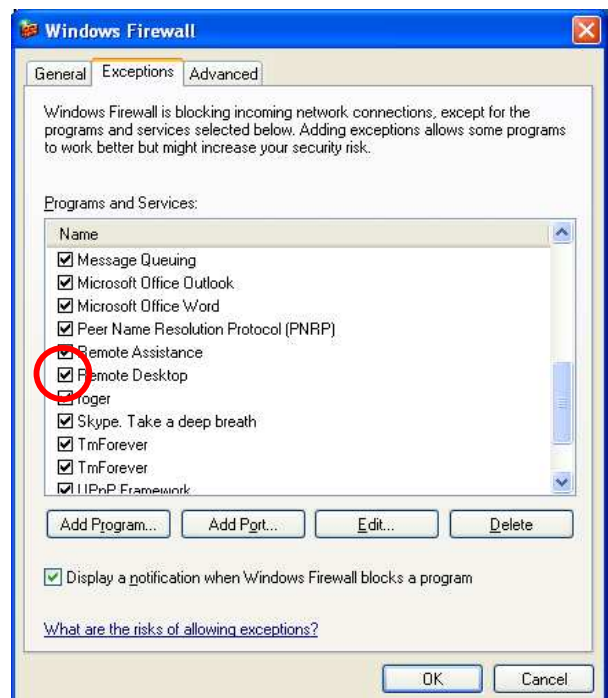


- b. Make sure your home PC can accept a remote connection. On your home PC right-click on “My Computer” and then select the “Properties” item. When the “System Properties” window displays, click on the “Remote” tab. Make sure the box next to “Allow users to connect remotely to this computer” is checked.



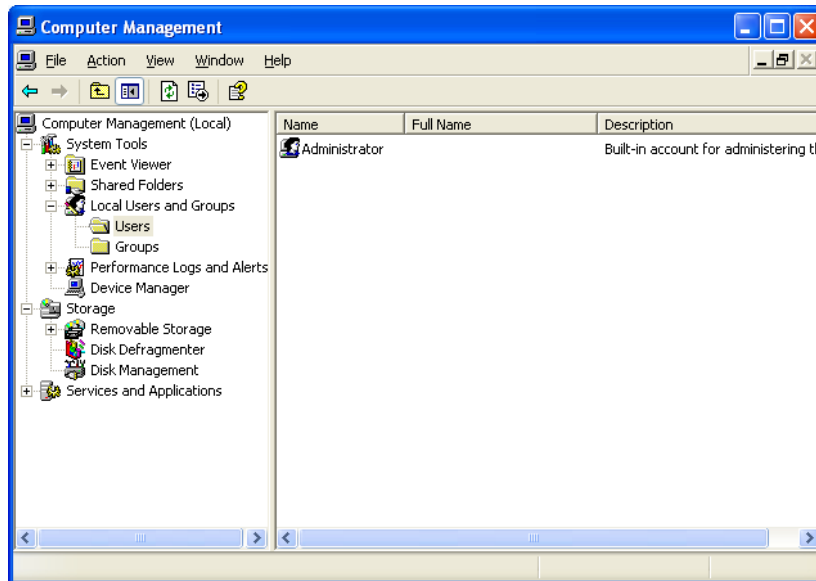
- c. Finally check to make sure that your Windows firewall is already set up to allow remote connections.

Go to Control Panel→Windows Firewall. On the “Windows Firewall” window press the “Exceptions” tab. Make sure that the “Remote Desktop” box is checked.

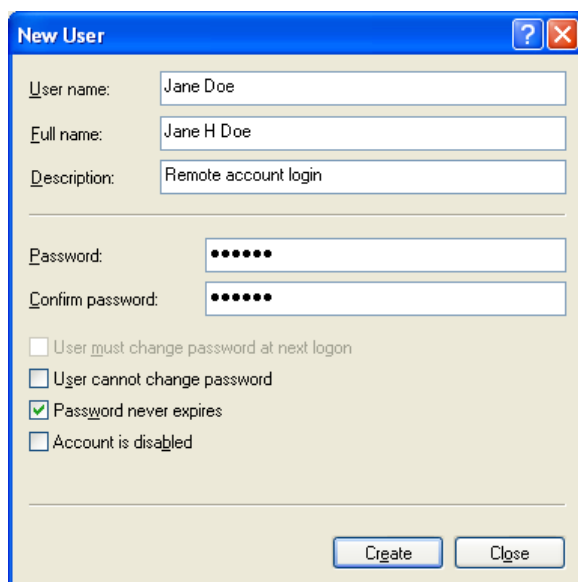


- d. Setup a User account on your home PC. You must set up a User Account with a Password that you can use on your tablet PC to connect to your home PC. Right click on “My Computer” on your home PC and select the “Manage” item. The “Computer Management” window will appear as shown below. Double click on “Local Users and Groups” and then click on “Users”.

If you right-click on the empty space in the area below the user Names (under the “Administrator” line in the example below), you will get a drop down menu. Click on “New User”.

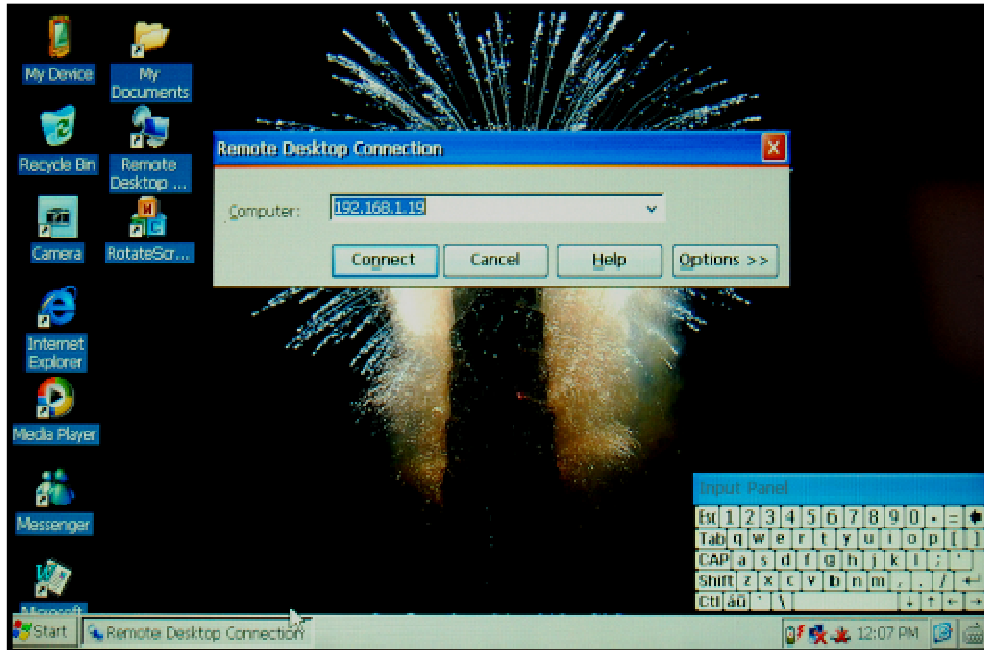


- e. In the “New User” window, fill in the blanks and press “Create”. You will use the User name and password later when you connect to your home PC from the tablet.



Remote connection from your tablet PC.

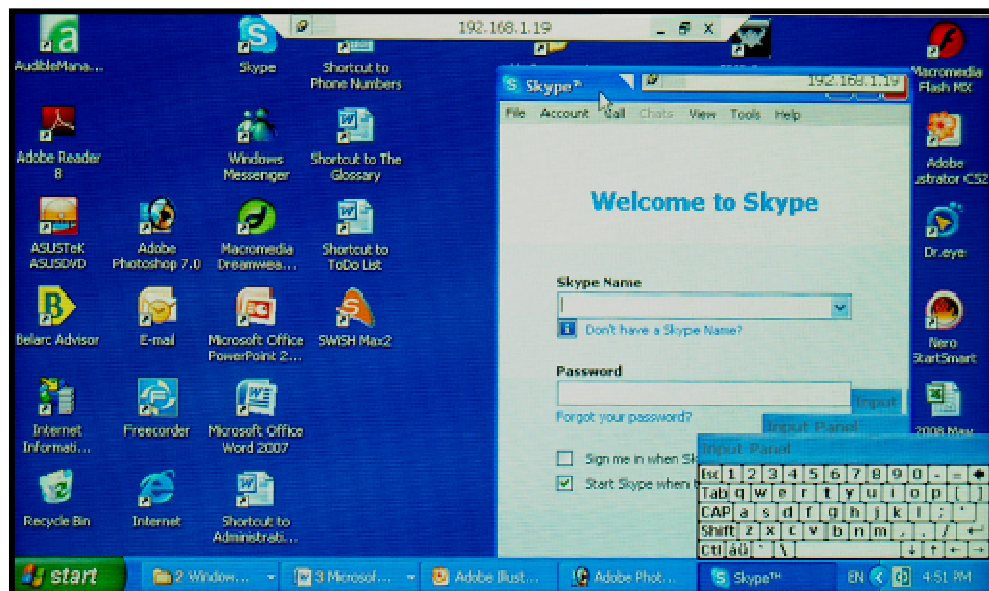
- a. First, you must make sure your tablet is connected to a network. On your tablet PC, go to Start Button→Programs→Remote Desktop Connection. When the Remote Desktop Connection window appears, type in your home PC IP address that you obtained earlier. Press “Connect”.



- b. On the “Remote Desktop Connection” window, type in your User Name and Password of your home PC.



- c. When you make your connection to your home PC, your tablet PC will display your home PC screen with a tab at the top of the tablet indicating your home PC IP address.



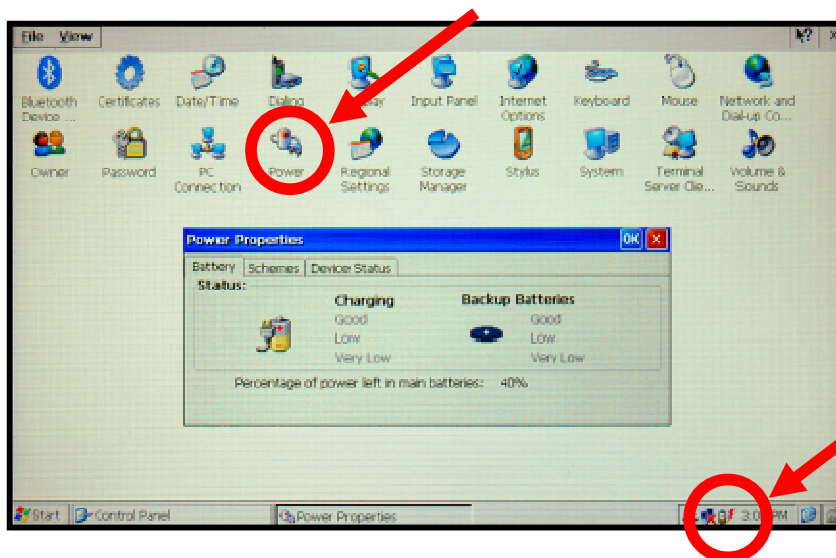
### 3.12 The Battery – Recharging, Status, Power Management and Screen Saver.

#### Charging the battery

The tablet battery can be charged in two ways. The first way is to connect the power supply directly to the tablet. The second way is to connect the power supply to the Docking Station and dock the tablet onto the station. When charging the tablet on the docking station, the right-LED behind the docking station mesh plate will illuminate red when recharging and change to green when charging is complete.

Note that the tablet must either be booted up or in suspend mode for the tablet battery to recharge. The battery will NOT recharge if the tablet is powered down (Safety Lock toggled to lock position).

You can view the status of the battery charge on the “Power Properties Window” (below) by clicking on the Battery icon located in the System Tray (lower right corner as shown). You can also go to Start Button→ Settings→ Control Panel → Power.



#### Power Management

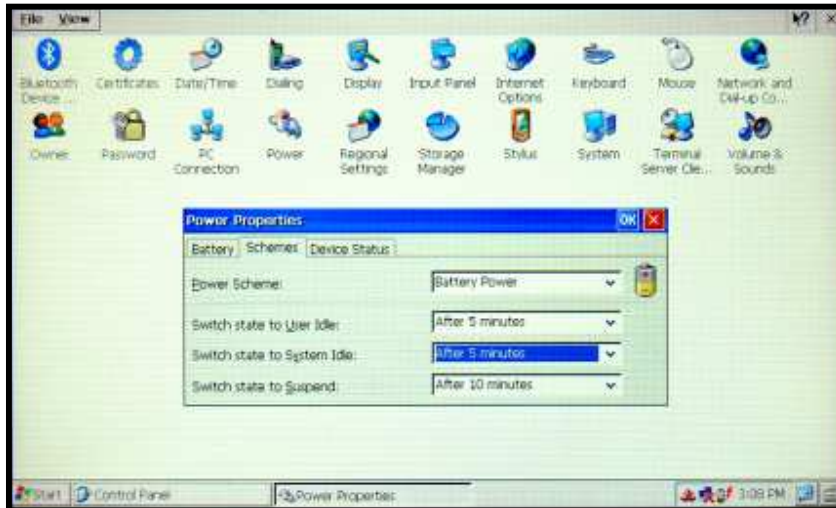
- Under the “**Schemes**” tab of the Power Properties Window (above) you can find Power Saving modes to preserve the battery charge when the tablet enters a **User Idle, System Idle, or Suspend state**. These power saving modes occur after the tablet has not been in use for a configured amount of time.

The **User Idle** state dims the screen after a configured duration of idleness.

The **System Idle state** blanks the screen after a configured duration of idleness. Simply tapping on the screen will refresh the display.

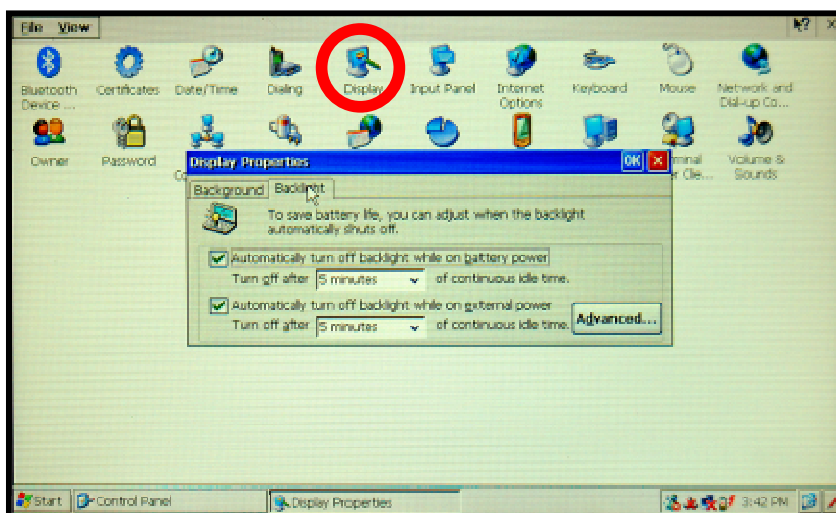
The **Suspend state** shuts down all power but that which is needed to preserve the present environment in memory. You must depress the on/off button at the top of the tablet for 1 second to revive the system. This is the most energy conserving of the three modes.

Note: After you resume from the suspend state, you may have to reestablish the wireless network connection.



- There is also a **Screen Saver** mode which can be configured from the “Display Properties” window (below). You can access this window by going to Start Button → Settings → Control Panel → Display. Click on the “Backlight” tab.

Here you can configure **Screen Saver mode** (screen blanks out) based on the amount of time the tablet is idle.

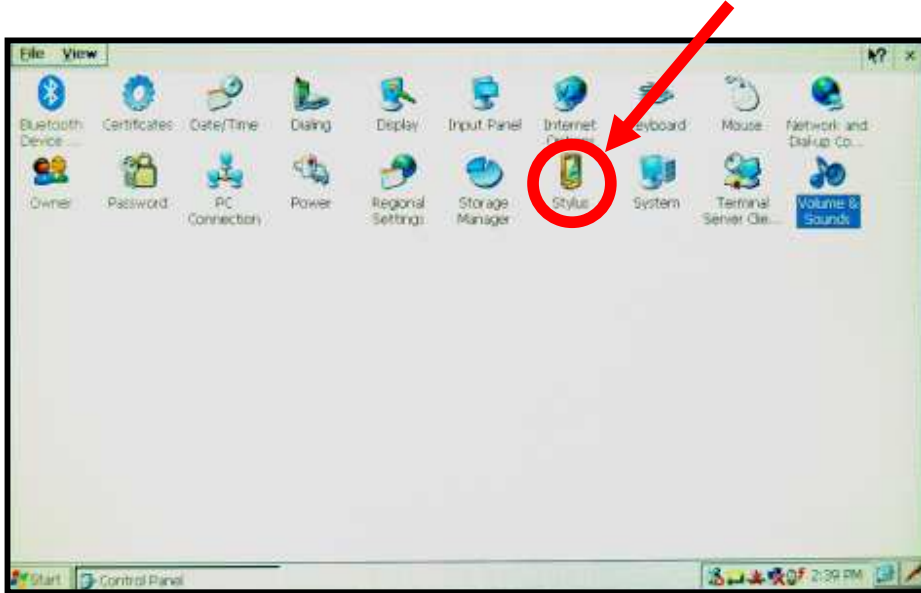




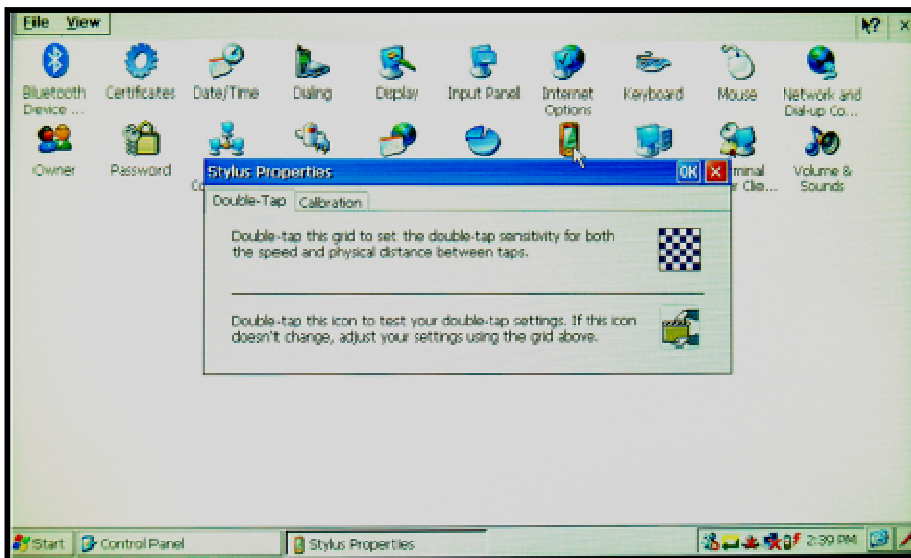
### 3.13 Recalibrating the Touch Panel

After an extended period of use, it may seem that your touch panel does not track your touch pen accurately. In other words, there may be a slight offset between where you touch with your pen and the actual placement on the screen. This is because touch panels occasionally need to be recalibrated.

- a. First you need to connect the tablet to the **Docking Station** and **attach a USB keyboard**. Then go to Start Button → Settings → Control Panel → Stylus



- b. After you click on the Stylus icon, the Stylus Properties window will display as below. To recalibrate the touch screen, click the "Calibration" tab.

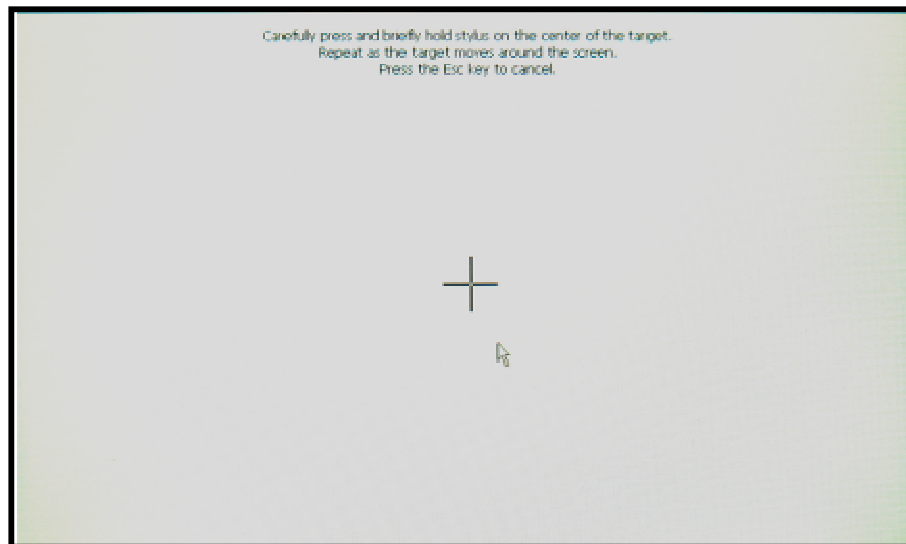


Note: The Double-Tap tab allows you to adjust the sensitivity to the double-tap speed at which you are accustomed.

- c. Click on the “Recalibrate” button.

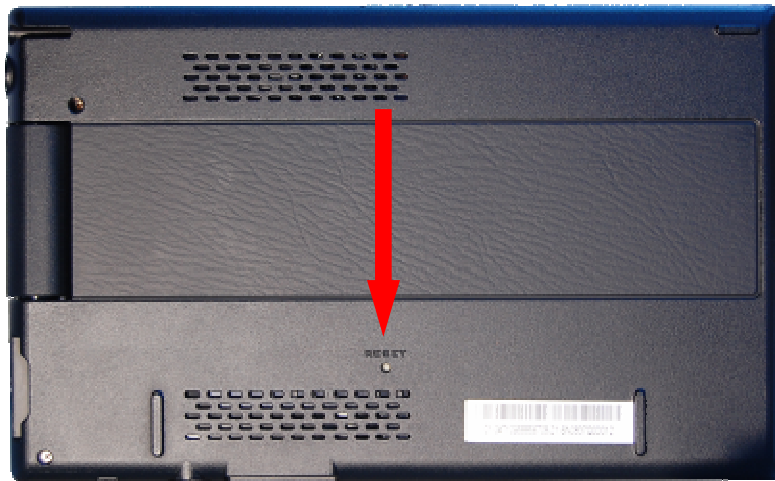


- d. When the screen below appears, follow the directions and tap the middle of the cross with your touch pen. As the cross moves to a new position, tap again at the center of the cross. When you are done with the final position, the screen will prompt you to Press Enter on your USB keyboard to accept the new settings.



### 3.14 The Reset Button

The tablet PC comes with a Reset Button. Pressing the Reset button with your touch pen will cause the Tablet to perform a hardware reboot. Note that all of your previous settings will be reset (i.e. date/time).



# 4 Reference

---



---



---

This section lists common problems and ways to troubleshoot.

## 4.1 Troubleshooting Guide

If you are experiencing problems with the tablet hardware or software, see Table 1 for possible solutions.

**Table 1. Troubleshooting the Tablet PC**

Symptom	Solution
No power to the Tablet	<ul style="list-style-type: none"> <li>▪ Make sure the “Safety Lock” on the bottom of the tablet is toggled to the Unlock position.</li> <li>▪ If the tablet is operating stand-alone, the battery charge may be low. Attach the power adaptor and charge the battery.</li> <li>▪ If the tablet is using the power adaptor or is plugged into the docking station, make sure that all cables are secure (especially to the wall socket). Make sure the wall socket is “hot” by testing other working accessories on that wall socket.</li> </ul>
No audio from the docking station.	<ul style="list-style-type: none"> <li>▪ If you have external speakers, make sure that the audio cables are secure between the tablet and the docking station.</li> <li>▪ Make sure that the system volume has not been turned down. Go to Start Button-&gt;Settings-&gt;Control Panel-&gt;Volume and Sounds</li> <li>▪ Make sure that the volume adjustment knob on the Docking Station is not turned all the way down.</li> </ul>
Touch Panel is not tracking the touch pen accurately.	<ul style="list-style-type: none"> <li>▪ Recalibrate the touch screen. See the “Recalibration” section.</li> </ul>
Cannot connect to the wireless hub after resuming from suspend mode	<ul style="list-style-type: none"> <li>▪ Delete the connection by bringing up the SDIO86861 Window by clicking on the Network icon in the system tray. Highlight the line that has your wireless hub name by clicking once on the hub name and press the “Advanced” button. In the “Preferred Networks” box, highlight the name of the wireless hub (click once) and then press the “Delete” key. Then hit OK. You will be returned to the SDIO86861 Windows where the tablet will again scan for your wireless hub where you can attempt the connection again.</li> </ul>

## 4.2 CE Statement Guide

Europe – EU Declaration of Conformity

This device complies with the essential requirements of the R&TTE Directive 1999/5/EC. The following test methods have been applied in order to prove presumption of conformity with the essential requirements of the R&TTE Directive 1999/5/EC:




- EN60950-1:2006  
Safety of Information Technology Equipment
- 
- EN 300 328 V1.7.1: (2006-10)
- Electromagnetic compatibility and Radio spectrum Matters (ERM); Wideband Transmission systems; Data transmission equipment operating in the 2,4 GHz ISM band and using spread spectrum modulation techniques; Harmonized EN covering essential requirements under article 3.2 of the R&TTE Directive
  
- EN 301 489-1 V1.6.1: (2005-09)  
Electromagnetic compatibility and Radio Spectrum Matters (ERM); ElectroMagnetic Compatibility (EMC) standard for radio equipment and services; Part 1: Common technical requirements
- EN 301 489-17 V1.2.1 (2002-08)
- Electromagnetic compatibility and Radio spectrum Matters (ERM); ElectroMagnetic Compatibility (EMC) standard for radio equipment and services; Part 17: Specific conditions for 2,4 GHz wideband transmission systems and 5 GHz high performance RLAN equipment

This device is a 2.4 GHz wideband transmission system (transceiver), intended for use in all EU member states and EFTA countries, except in France and Italy where restrictive use applies.

In Italy the end-user should apply for a license at the national spectrum authorities in order to obtain authorization to use the device for setting up outdoor radio links and/or for supplying public access to telecommunications and/or network services.

This device may not be used for setting up outdoor radio links in France and in some areas the RF output power may be limited to 10 mW EIRP in the frequency range of 2454 – 2483.5 MHz. For detailed information the end-user should contact the national spectrum authority in France.

# CE 0560

 Český [Czech]	<i>[Jméno výrobce]</i> tímto prohlašuje, že tento <i>[typ zařízení]</i> je ve shodě se základními požadavky a dalšími příslušnými ustanoveními směrnice 1999/5/ES.
 Dansk [Danish]	Undertegnede <i>[fabrikantens navn]</i> erklærer herved, at følgende udstyr <i>[udstyrets typebetegnelse]</i> overholder de væsentlige krav og øvrige relevante krav i direktiv 1999/5/EF.
 Deutsch [German]	Hiermit erkläre <i>[Name des Herstellers]</i> , dass sich das Gerät <i>[Gerätetyp]</i> in Übereinstimmung mit den grundlegenden Anforderungen und den übrigen einschlägigen Bestimmungen der

	Richtlinie 1999/5/EG befindet.
[et] Eesti [Estonian]	Käesolevaga kinnitab [ <i>tootja nimi = name of manufacturer</i> ] seadme [ <i>seadme tüüp = type of equipment</i> ] vastavust direktiivi 1999/5/EÜ põhinõuetele ja nimetatud direktiivist tulenevatele teistele asjakohastele sätetele.
[en] English	Hereby, [ <i>name of manufacturer</i> ], declares that this [ <i>type of equipment</i> ] is in compliance with the essential requirements and other relevant provisions of Directive 1999/5/EC.
[es] Español [Spanish]	Por medio de la presente [ <i>nombre del fabricante</i> ] declara que el [ <i>clase de equipo</i> ] cumple con los requisitos esenciales y cualesquiera otras disposiciones aplicables o exigibles de la Directiva 1999/5/CE.
[el] Ελληνική [Greek]	ΜΕ ΤΗΝ ΠΑΡΟΥΣΑ [ <i>name of manufacturer</i> ] ΔΗΛΩΝΕΙ ΟΤΙ [ <i>type of equipment</i> ] ΣΥΜΜΟΡΦΩΝΕΤΑΙ ΠΡΟΣ ΤΙΣ ΟΥΣΙΩΔΕΙΣ ΑΠΑΙΤΗΣΕΙΣ ΚΑΙ ΤΙΣ ΛΟΙΠΕΣ ΣΧΕΤΙΚΕΣ ΔΙΑΤΑΞΕΙΣ ΤΗΣ ΟΔΗΓΙΑΣ 1999/5/ΕΚ.
[fr] Français [French]	Par la présente [ <i>nom du fabricant</i> ] déclare que l'appareil [ <i>type d'appareil</i> ] est conforme aux exigences essentielles et aux autres dispositions pertinentes de la directive 1999/5/CE.
[it] Italiano [Italian]	Con la presente [ <i>nome del costruttore</i> ] dichiara che questo [ <i>tipo di apparecchio</i> ] è conforme ai requisiti essenziali ed alle altre disposizioni pertinenti stabilite dalla direttiva 1999/5/CE.
Latviski [Latvian]	Ar šo [ <i>name of manufacturer / izgatavotāja nosaukums</i> ] deklarē, ka [ <i>type of equipment / iekārtas tips</i> ] atbilst Direktīvas 1999/5/EK būtiskajām prasībām un citiem ar to saistītajiem noteikumiem.
Lietuvių [Lithuanian]	Šiuo [ <i>manufacturer name</i> ] deklaruoja, kad šis [ <i>equipment type</i> ] atitinka esminius reikalavimus ir kitas 1999/5/EB Direktyvos nuostatas.
[nl] Nederlands [Dutch]	Hierbij verklaart [ <i>naam van de fabrikant</i> ] dat het toestel [ <i>type van toestel</i> ] in overeenstemming is met de essentiële eisen en de andere relevante bepalingen van richtlijn 1999/5/EG.
[mt] Malti [Maltese]	Hawnhekk, [ <i>isem tal-manifattur</i> ], jiddikjara li dan [ <i>il-mudel tal-prodott</i> ] jikkonforma mal-ħtiġijiet essenzjali u ma provvedimenti oħrajn relevanti li hemm fid-Dirrettiva 1999/5/EC.
[hu] Magyar [Hungarian]	Alulírott, [ <i>gyártó neve</i> ] nyilatkozom, hogy a [ <i>... típus</i> ] megfelel a vonatkozó alapvető követelményeknek és az 1999/5/EC irányelv egyéb előírásainak.
[pl] Polski [Polish]	Niniejszym [ <i>nazwa producenta</i> ] oświadczam, że [ <i>nazwa wyrobu</i> ] jest zgodny z zasadniczymi wymogami oraz pozostałymi stosownymi postanowieniami Dyrektywy 1999/5/EC.
[pt] Português [Portuguese]	[ <i>Nome do fabricante</i> ] declara que este [ <i>tipo de equipamento</i> ] está conforme com os requisitos essenciais e outras disposições da Directiva 1999/5/CE.
[sl] Slovensko [Slovenian]	[ <i>Ime proizvajalca</i> ] izjavlja, da je ta [ <i>tip opreme</i> ] v skladu z bistvenimi zahtevami in ostalimi relevantnimi določili direktive 1999/5/ES.
Slovensky [Slovak]	[ <i>Meno výrobcu</i> ] týmto vyhlasuje, že [ <i>typ zariadenia</i> ] spĺňa základné požiadavky a všetky príslušné ustanovenia Smernice 1999/5/ES.
[fi] Suomi [Finnish]	[ <i>Valmistaja = manufacturer</i> ] vakuuttaa täten että [ <i>type of equipment = laitteen tyyppimerkintä</i> ] tyyppinen laite on direktiivin 1999/5/EY oleellisten vaatimusten ja sitä koskevien direktiivin muiden ehtojen mukainen.
[sv] Svenska [Swedish]	Härmed intygar [ <i>företag</i> ] att denna [ <i>utrustningstyp</i> ] står i överensstämmelse med de väsentliga egenskapskrav och övriga relevanta bestämmelser som framgår av direktiv 1999/5/EG.

## 4.3 FCC Statement Guide

### Federal Communication Commission Interference Statement

This equipment has been tested and found to comply with the limits for a Class B digital device, pursuant to Part 15 of the FCC Rules. These limits are designed to provide reasonable protection against harmful interference in a residential installation. This equipment generates, uses and can radiate radio frequency energy and, if not installed and used in accordance with the instructions, may cause harmful interference to radio communications. However, there is no guarantee that interference will not occur in a particular installation. If this equipment does cause harmful interference to radio or television reception, which can be determined by turning the equipment off and on, the user is encouraged to try to correct the interference by one of the following measures:

- Reorient or relocate the receiving antenna.
- Increase the separation between the equipment and receiver.
- Connect the equipment into an outlet on a circuit different from that to which the receiver is connected.
- Consult the dealer or an experienced radio/TV technician for help.

FCC Caution: Any changes or modifications not expressly approved by the party responsible for compliance could void the user's authority to operate this equipment.

This device complies with Part 15 of the FCC Rules. Operation is subject to the following two conditions: (1) This device may not cause harmful interference, and (2) this device must accept any interference received, including interference that may cause undesired operation.

#### IMPORTANT NOTE:

##### Radiation Exposure Statement:

This equipment complies with FCC radiation exposure limits set forth for an uncontrolled environment. End users must follow the specific operating instructions for satisfying RF exposure compliance. To maintain compliance with FCC RF exposure compliance requirements, please follow operation instruction as documented in this manual.

This transmitter must not be co-located or operating in conjunction with any other antenna or transmitter. The availability of some specific channels and/or operational frequency bands are country dependent and are firmware programmed at the factory to match the intended destination. The firmware setting is not accessible by the end user.