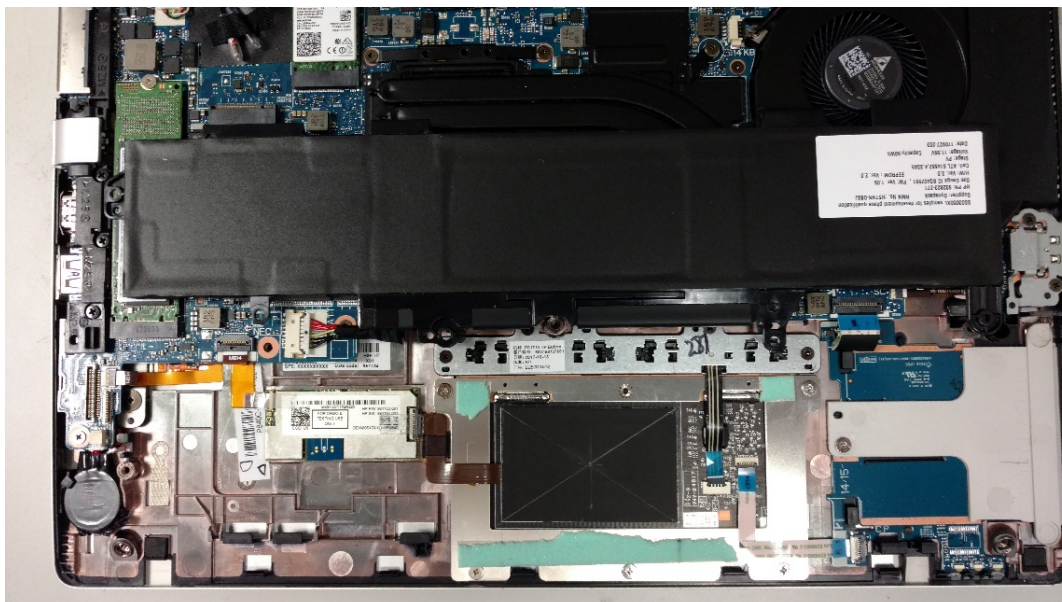


## OEM RFID Module Installation Guide

1. Place laptop upside down on a clean surface, remove all screws and back cover to expose the inside of the laptop.

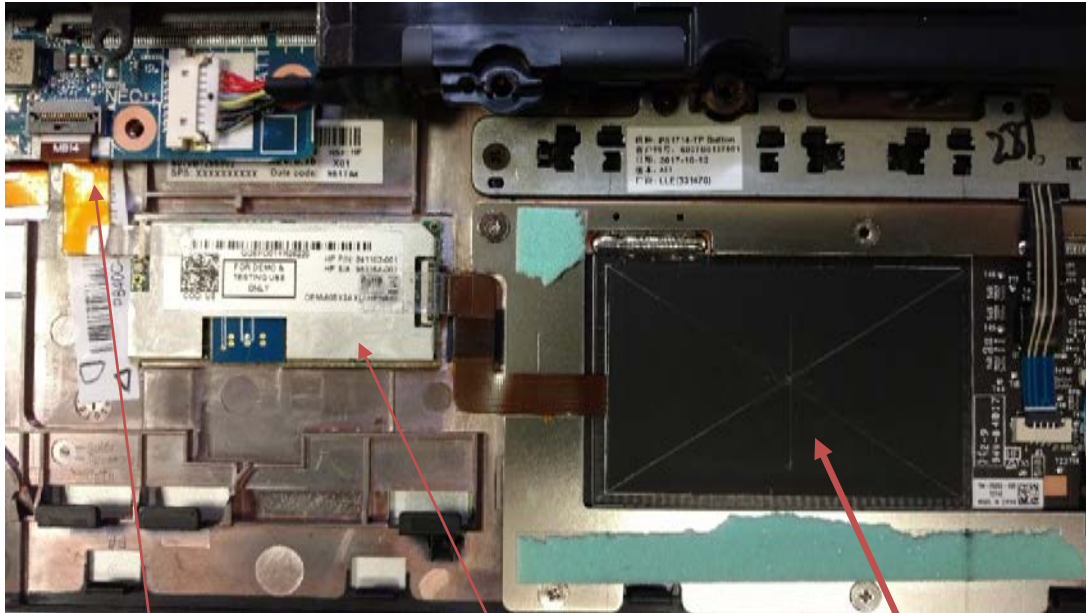


2. Remove battery pack as shown below.



3. Remove the liner under the antenna and module to expose the adhesive. Place antenna under the open square area under the middle of the laptop touchpad and massage gently to ensure good smooth adhesion. Route the flex cable and place the RF ID module towards the left side of the laptop as indicated in the picture below.

4. Next, install USB flex cable as show in picture below.

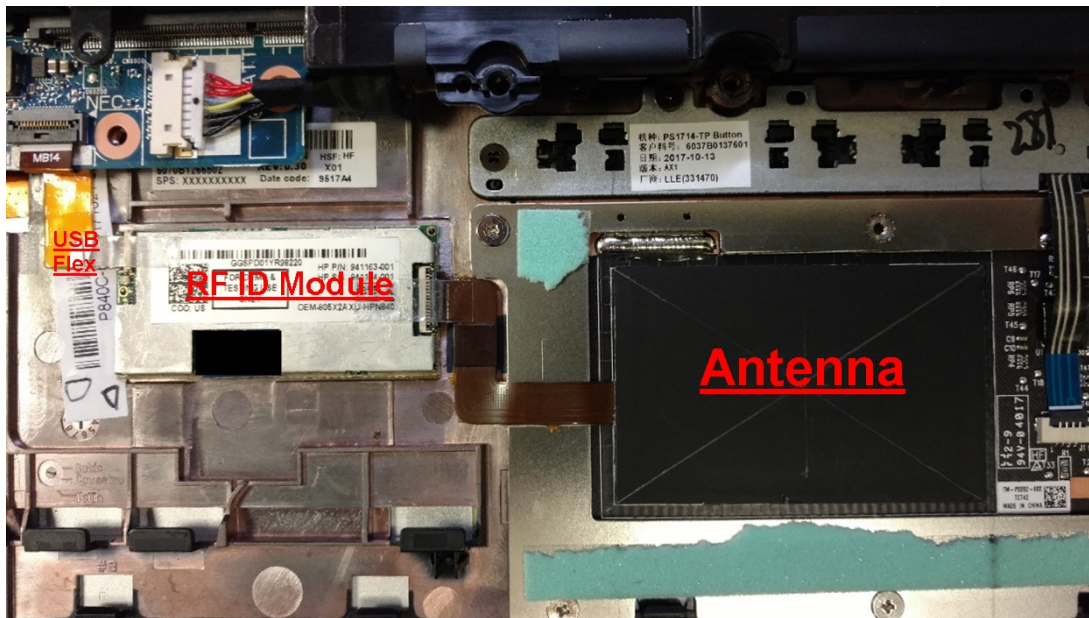


USB Connection

RFID Reader module

Antenna

- RFID antenna is adhered to bottom of touchpad.
- Module is adhered to laptop housing frame.
- USB flex connected to laptop internal USB port.



5. Place and install battery over RFID module and fasten down all screws. Next, reinstall laptop bottom cover and install all screws.

6. Place the OEM modular FCC ID label below the host FCC ID label.

