

AQUATIC INCIDENT
A L E R T S Y S T E M
BY RJE TECHNOLOGIES, INC.

Users Manual

RJE TECHNOLOGIES, INC.

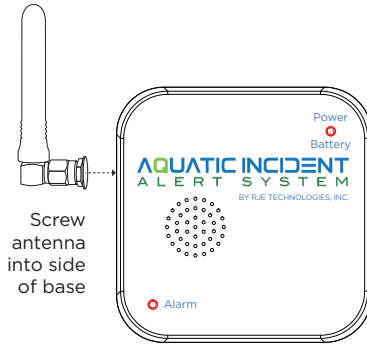
15375 Barranca Parkway I-112 • Irvine, CA 92618 • Phone 949-943-3349

Email: info@rjettechnologies.com • Website: www.rjettechnologies.com

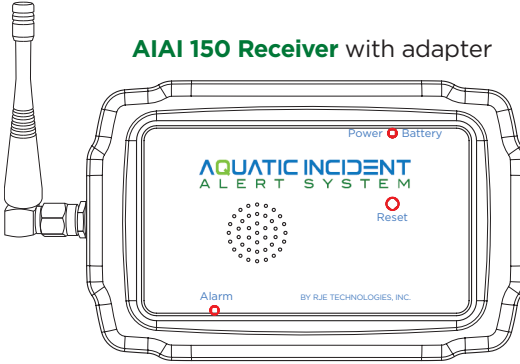
Aquatic Incident Alert Users Manual

Components:

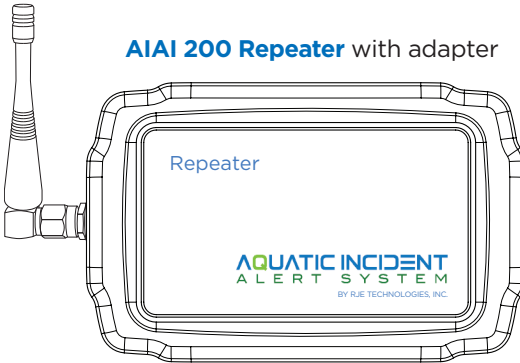
AIAI 100 Base with AC adapter



AIAI 150 Receiver with adapter



AIAI 200 Repeater with adapter



Needed for installation:

- Power Drill
- Screwdriver
- Level

Suggested installation sites

The **AIAI 100 Base** must see the pool and is suitable for outdoors installation. The base has a siren and will alarm when activated by SOS sensors. Should be wall mounted 5 feet above ground level. It must be plugged into an AC outlet.

The **AIAI 150 Receiver** has a siren and should be placed where first responders can hear it. It must be plugged into a USB port or and AC outlet.

The **AIAI 200 Repeater** 200 Repeater can be wall mounted and should be placed in a location to extend range of signal if needed. The Repeater does not have a siren and is used strictly to extend the range to the receiver. It must be plugged into an AC outlet.

Introduction

RJE Technologies, Inc Aquatic Incident Alert is a commercial pool alarm system designed to alert responders when the life guard has entered the water. SOS sensors are placed on the life guard's tube and activated by a water switch. The system is designed to work in large facilities and has an optional repeater to extend range if necessary.

Installation

Each components has an antennae that must be screwed on. The Base and Repeater come with hardware to wall mount 5 feet above ground level.

The receiver can sit on a desk or shelf and has a USB cord and power adapter.

Operation

Once the components are mounted and plugged in the system is ready to use. SOS sensors on the life guards' tube will activate the alarm when they are in the water. The system will alarm at the Base and Receiver. To stop the alarm, the SOS sensor must be wiped off and the reset button on the Base is pushed to rearm the system. The alarm cannot be stopped at the First Responder location Receiver. The Repeater does not alarm nor can it stop the alarm.

The power light on the Base and Receiver will always be on when the system is plugged in and the alarm light will flash when activated. The battery indicator on the base and receiver will flash when the battery in the SOS sensor is low.

Be sure to push the reset button on the Base after an alarm. This places the system back into armed mode. SOS sensors must be dry to discontinue the alarm.

Federal Communications Commission (FCC) Notice

Model: AIA100 (Aquatic Incident Alert)

FCC ID: T5P-AIA100

This device complies with Part 15 of FCC Rules. Operation is subject to the following two conditions:

This device complies with Part 15 of the FCC Rules. Operation is subject to the following two conditions: (1) this device may not cause harmful interference, and (2) this device must accept any interference received, including interference that may cause undesired operation.

Changes or modifications not expressly approved by RJE Technologies, Inc. could void the users authority to operate the equipment.



Email: info@rjetechnologies.com • Website: www.rjetechnologies.com