



Hours of Service Feature Overview

Service Cycle

US-8 Logs Options Carrier			
Don Post 01 is 'On-duty - Beginning of Shift/Pre-trip'			
If your log is correct, you can drive for 01:59.			
70hr	63:58:41	10hr reset	10:00:00
11hr	11:00:00	Split reset	N/A
14hr	07:58:41	34hr reset	34:00:00 ?
8hr	01:58:41	30min reset	00:30:00

Buttons: Today's log, More timers, Co-Driver

Buttons: Off-duty, Sleeper berth, Driving, On-duty

Menu | HOS 01:59 | 16:44

HOS timers displayed include:

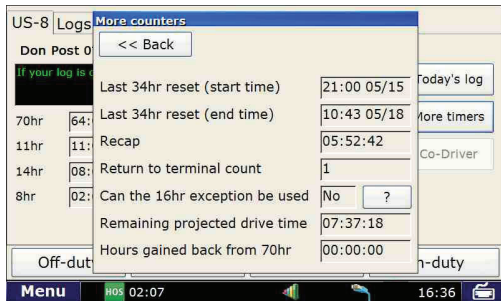
- **70hr:** Time remaining until your 70-hour On-Duty limit is reached.
- **11hr:** Time remaining until your 11-hour Driving limit is reached.
- **14hr:** Time remaining until your 14-hour On-Duty limit is reached.
- **8hr:** Time remaining until your 8-hour On-Duty limit is reached before you must take a required 30-minute Off-Duty break.
- **10hr Reset:** Time remaining in the 10-hour Off-Duty and/or Sleeper Berth break period required after 14 hours of On-Duty status.
- **Split Reset:** Time remaining in the break period for a split Sleeper Berth to complete.
- **34hr Reset:** Time remaining until your 34-hour reset is complete.
 - Tap ? next to 34-hr Reset to view when you are eligible to take advantage of the 34-hour reset rule, and what day and time the 34-hour reset will complete.
- **30min Reset:** Time remaining until your 30-minute Off-Duty break is complete.



Hours of Service

Hours of Service Feature Overview

More Timers Pop-up Window



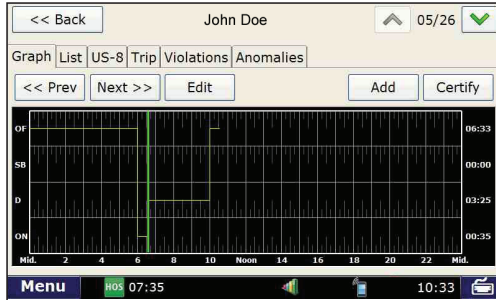
Tap **More timers** to view additional HOS timers:

- **Last 34 hour reset (start time):** The time your last 34-hour reset started.
- **Last 34 hour reset (end time):** The time your last 34-hour reset ended.
- **Can the 16hr rule be used?** Indicates if you are eligible to use the 16hr rule, based on your current duty cycle. If you would like more information on whether your organization has enabled use of the 16hr rule, please contact your fleet manager.
 - Tap **?** to view more details about your 16-hour eligibility.
- **Remaining projected drive time:** Your available remaining Driving time.
 - Tap **Today's log** to view the graph version of each day in the current 8-day period. For more information, see the Graph Sub-tab on page 37.
- **Hours gained back from 70hr after 12 A.M.:** Amount of Driving time available to you starting at 12 A.M. the next day, based on the amount of On-Duty and Driving hours you've completed in the current 8-day period.
 - To get back to the Summary Tab, hit the **Back** button.



Hours of Service Feature Overview



Today's Log Main Screen - Graph Tab



Today's Log

The **Today's log** button can be accessed on the **Service Cycle tab**. Six tabs display across the top of the **Today's log** screen.

Graph is the tab that opens when you select Today's log. This screen has two buttons: **Edit** and **Add**.

- **Edit**. This button allows you to edit any uncertified log from the last 8 days (select the arrow buttons  and  to view a previous day's log.)
- **Add**. This button on the **Today's Log Graph** screen allows you to add a current duty status to the current day. Any changes to earlier statuses must be made using the **Edit** button.
- **Certify**. This button is used to Certify the log you are currently viewing.

Note: Driving status time cannot be edited once recorded.



Hours of Service

Hours of Service Feature Overview

Service Cycle

US-8 | Logs | Options | Carrier

Don Post 01 is 'On-duty - Beginning of Shift/Pre-trip'

If your log is correct, you can drive for 01:59.

70hr	63:58:41	10hr reset	10:00:00
11hr	11:00:00	Split reset	N/A
14hr	07:58:41	34hr reset	34:00:00 ?
8hr	01:58:41	30min reset	00:30:00

Buttons: Today's log, More timers, Co-Driver

Buttons: Off-duty, Sleeper berth, Driving, On-duty

Menu | HOS 01:59 | 16:44

Service Cycle

To update your current duty status:

- Tap **Off-duty** for breaks or other required off-duty periods.
- Tap **S. Berth** to enter sleeper berth mode.
- Tap **On-Duty** to enter on-duty mode. The system automatically switches between On-Duty and Driving status while you progress through your day.



Hours of Service Feature Overview

HOS Safe-driving Screen



HOS Safe-driving Screen

If you select the HOS icon from the Home Menu while driving, the HOS safe-driving screen will display, displaying your effective remaining drive time in large type to help minimize driver distraction. This time is the same time that displays on the status bar.

If the 16-hour rule is enabled and you are using the rule while driving, two timers will be visible to display your effective remaining drive time.



Hours of Service

Hours of Service Feature Overview

Logs Tab

Date	Miles	Off-duty	S.B.	Driving	On-duty
05/19	75.6	08:35:00	00:00:00	00:16:47	06:20:14
05/18	257.8	12:45:00	00:00:00	10:05:00	01:10:00
05/17	0.0	24:00:00	00:00:00	00:00:00	00:00:00
05/16	0.0	24:00:00	00:00:00	00:00:00	00:00:00
✳️ 05/15	349.8	12:35:00	00:00:00	10:30:00	00:55:00
✓ 05/14	234.3	12:45:00	00:00:00	10:25:00	00:50:00
✓ 05/13	172.4	12:45:00	00:00:00	10:20:00	00:55:00
✓ 05/12	264.9	12:45:00	00:00:00	10:20:00	00:55:00

Off-duty Sleeper berth Driving On-duty

Menu HOS 05:23 15:12

- **Title** lists driver name and current duty status.
- indicates the currently selected day.
- ✳️ indicates a revision has been made to the log in the Rand McNally Connect web portal that requires the driver to review and certify.
- ✓ indicates the log has been certified.
- **Date** indicates the date of 24-hour log period.
- **Miles** indicates the # miles driven in 24-hour log period.
- **Off-duty** indicates time in off-duty mode.
- **S.B.** indicates time in sleeper berth mode.
- **Driving** indicates time in driving mode.
- **On-duty** indicates time in on-duty mode.

Logs: 8-day Duty Status Totals

The Logs tab displays your duty status totals and total miles driven for each day in the current 8-day period.

- Tap on a log entry to view the graph version of the log.

If a log entry is highlighted in orange, this indicates that the log entry has not yet been uploaded to the Rand McNally Connect web portal. To upload your current HOS logs (up to the current minute) to the Rand McNally Connect web portal, tap **Options**, then click the **Send Logs** button. The orange highlight will disappear once the logs are sent.



Hours of Service Feature Overview

Options Tab



Options Tab

The Options tab is where you can change modes for roadside inspections, personal conveyance, and more.

- Tap **Request HOS Logs** to refresh your HOS logs if you have recently moved from truck to truck and your logs are not yet visible on the device.
- Tap **Send HOS Logs** to upload your current HOS logs (up to the current minute) to the Rand McNally Connect web portal.

- Tap **Change Trucks** if you are going to be using a different truck with a different TND™ 765 device installed in it. This will ensure that the next truck you use will display your most up-to-date log information.

- Tap **Fax/Email HOS Logs** to send logs to Law Enforcement.

NOTE: You must certify all logs except for the current day's log, and enter Roadside Audit mode before faxing or emailing your logs.

- Tap **DVIR** to enter a new DVIR or review a previous entry.
 - Tap **Request Last DVIR** if you have received a replacement TND™ 765 device for the vehicle #, as the new unit will not have the last DVIR on it.
- Tap **Change Mode** to enter Roadside Audit mode if you are showing your device to Law Enforcement, or Personal Conveyance mode if you are using your vehicle for personal use.
- Tap **Fuel Purchase** to add fuel purchases.



Hours of Service

Hours of Service Feature Overview

Company Tab

The screenshot shows a software interface with a top navigation bar containing 'US-8', 'Logs', 'Options', and 'Carrier'. Below this, there are two main sections: 'Carrier' and 'Terminal'. The 'Carrier' section includes fields for 'Name' (David Test), 'DOT#' (1234), and 'Address' (9855 Woods Dr, Skokie, IL 60077). The 'Terminal' section includes fields for 'Name' (Scott), 'Start' (00:00 CDT), and 'Address' (9855 Woods Drive, Skokie, Illinois 60077). At the bottom of the screen, there are four buttons: 'Off-duty', 'Sleeper berth', 'Driving', and 'On-duty'. A status bar at the very bottom shows 'Menu', 'R08', '07:35', and '10:40'.

Carrier Tab

The Company tab displays your company information, terminal information and DOT number. This information is required for your electronic logs to be compliant. The information displayed here should have been pre-configured by your fleet manager.

Carrier

The upper half of the screen displays your company information, including Hours of Service Type and DOT number.

- **Name**
- **Address**
- **DOT Number**

Terminal

The lower half of the screen displays your terminal information. This may be the same information listed in the Carrier section above.

- **Name**
- **Address**
- **Start:** This field shows the time and time zone for the terminal, which is the time that your Hours of Service logs are based on.



Hours of Service Feature Overview

Graph Sub-tab



Graph: Day's Log Graph

The Graph sub-tab visually depicts the log from the selected day.

- A red line on the graph indicates a log violation.
- Tap and to scroll through the Graph log of each day for the last 8 days.
- Tap and to move the green cursor on the graph. The corresponding duty status, time and location will display below the graph.
- Tap **Edit** to make changes to a Duty Status. Driving status cannot be edited.
 - If the selected log is already certified, tap **View** to view details of Duty Status or Trip Info entries.
- **Add** another duty status to the log you are currently viewing.
- Tap **Certify** to certify the selected day's log as correct, starting with the oldest day in the current 8-day period first. Once you certify a log, you cannot make any changes to that day's log.
- Tap **Violations** to view any violations that have occurred and the date and time of the violation.



Hours of Service

Hours of Service Feature Overview

List Sub-tab

Time	Status
20:00:00	Off-duty - End of Shift
09:10:00	Driving (manual) - WORK
08:45:00	On-duty - Load
08:00:00	Off-duty - Break
04:45:00	Driving (manual) - WORK
04:00:00	On-duty - Drop and Hook
00:00:00	Off-duty - Equipment Malfunction

Duration	Status
12:00:00	Off-duty - End of Shift
10:50:00	Driving (manual) - WORK
00:25:00	On-duty - Load
00:45:00	Off-duty - Break
03:15:00	Driving (manual) - WORK
00:45:00	On-duty - Drop and Hook
04:00:00	Off-duty - Equipment Malfunction

List: Day's Duty Statuses

The List sub-tab displays all duty statuses recorded on the selected day.

- Tap and to scroll through Duty Status history List for each day in the current 8-day period.
- Tap any Duty Status or Trip Info entry to view additional details. You can edit the entry if you have not yet certified the selected day's log. Driving status cannot be edited.

Duty Status Entries:

- **Time** indicates time of duty status entry. Click the Time column heading to view the duration of each duty status.
- **Status** indicates type of duty status (Off-Duty, Sleeper Berth, Driving, On-Duty).

Note: Timer column can change to Duration if you tap Time/Duration.



Hours of Service Feature Overview

Service Cycle Summary

Graph	List	US-8	Trip	Violations	Anomalies
Off	11:45:00	70hr			47:28:23
SB	00:00:00	Recap			12:15:00
D	01:44:18	RTC		2	
On	10:30:42				

Summary: Day's Duty Status Totals

The Summary sub-tab shows the number of miles driven, Duty Status totals and running totals for various HOS rules for the selected day.

- Tap and to view a summary of duty status totals for each day in the current 8-day period.

Totals for the Day:

- **Off-duty** indicates total Off-Duty time.
- **S.B.** indicates total Sleeper Berth time.
- **Driving** indicates total Driving time.
- **On-duty** indicates total On-Duty time.

Running Totals for Day:

- **Remaining 70hr:** Remaining time in 70-hour cycle as of the end of the selected day
- **Return to terminal count:** If you use the 16-hour rule, this displays the number of returns to terminal recorded



Hours of Service

Hours of Service Feature Overview

Trip Info Sub-tab

<< Back ▲ 05/18 ▼

Graph | List | US-8 | Trip | Violations | Anomalies

Co-driver(s) Jake_Doe

Trailer(s)

BOL(s)

Truck#	Work Miles	Personal Miles
110015	257.8	0.0

*Tap on the truck# record to see starting/ending odometer

Menu HOS 04:49 15:46

<< Back John Doe ▲ 05/19 ▼

Graph | List | US-8 | Trip | Violations | Anomalies

Co-driver(s) John Doe

Trailer(s)

BOL(s)

Tr

*Tap on the truck# record to see starting/ending odometer

Menu HOS 07:03 12:57

Trip Info: Day's Trip Information

The Trip Info sub-tab displays the co-driver(s), trailer(s), bill(s) of lading, work miles and personal miles recorded on the selected day.

- Tap ▲ and ▼ to scroll through the Trip Info for each day in the current 8-day period.
- **Co-driver(s):** co-driver name(s)
- **Trailer(s):** trailer ID(s)
- **BOL(s):** Bill of Lading number(s)
- **Truck #:** tractor number
- **Work Miles:** Total number of miles put on the truck while on duty
- **Personal Miles:** total miles driven in Personal Conveyance mode



Hours of Service Feature Overview

Time Period	Description
18:00 05/18 - 20:00 05/18	On-duty
16:55 05/18 - 20:00 05/18	Driving
16:45 05/18 - 20:00 05/18	Req. break

Violations: HOS

The Violations sub-tab displays any violations of Hours of Service rules.

Anomalies: Driver or Sensor Issues

The Anomalies sub-tab displays any errors recorded during the selected day such as system issues or driving recorded while the driver was not logged into the system.

Time	Description
------	-------------

NOTE: If a system error occurs, you must keep paper logs during this period.



Hours of Service

HOS: A Day in the Life of a Driver

This section walks you through how to use the HOS application from the beginning of your day until the end of your day.

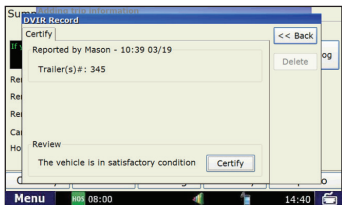
(a) Trip Info Pop-up Window



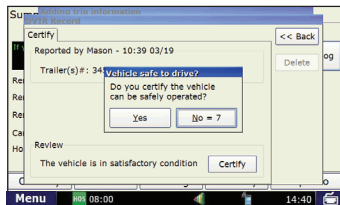
(b) Review DVIR Pop-up Window



(c) DVIR Pop-up Window



(d) Final Certification Pop-up Window



Complete a Pre-Trip entry (and certify DVIR)

Enter a Trip Info entry to start your work day. This will start your 14-hour cycle and move you to On-Duty status. Once you enter a Trip Info entry, you should then review and certify the DVIR entry from the previous day.

(a) Complete a Trip Info entry

From the Summary screen, press **Trip Info**.

- Enter **Load, Trailers** and **Co-driver** information.
- Select **Pre-Trip**.
- Press **Submit**.

Your pre-trip is now complete! You are now in On-Duty status.

(b) Review DVIR after entering Trip Info

If there are outstanding DVIR entries, a pop-up will appear asking if you would like to review your last DVIR. Click **Yes**.

(c) Check to see if the last DVIR entry included any vehicle defects. Defects are vehicle maintenance issues that have been recorded.

(d) If no defects were recorded:

- Press **Certify**.
 - A pop-up will appear asking you to confirm that the vehicle can be operated safely. Click **Yes** if correct.