

COBALT

ZERO GRAVITY



Bluetooth headset
MA-3509

User's Manual

BLUETOOTH v.4.2

Thank you for choosing the ZERO GRAVITY Premium Wireless Headset. Please read this User's Manual carefully, before using this headset, and please save this Manual for further reference. Before operating, please read all the Safety notices to assure safe and appropriate use.



Safety Notice:

- Please observe the rules of the Country or Region which you are in, while driving.
- Do not disassemble or modify the headset for any reason, as it may damage or burn the headset.
- Please keep the equipment along with all the accessories out of the reach of children and pets. It can cause suffocation and serious injury.
- Do not use or store this device in an environment where the temperature is too low or too high (Below 30°F or over 110°F).
- Please do not place the device in water, for the liquid can cause serious damage to the device.
-

※ Contents: Bluetooth Headset, USB Charging Cable, Additional Earpieces, User's Manual.

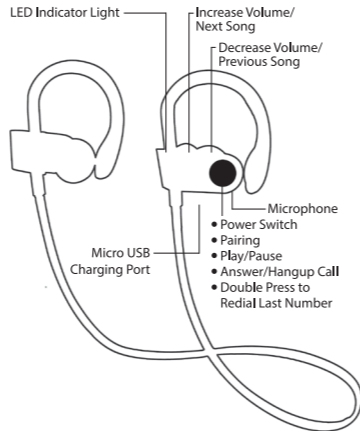
USB Charging Cable:



Listening at a high volume for a long time may damage your hearing. It is recommended that you use the lowest volume necessary, when speaking and listening to music.

1. Guide

■ Headset introduction



2. Instructions

First, make sure Bluetooth is turned on for the device you wish to pair.

■ Key Functions

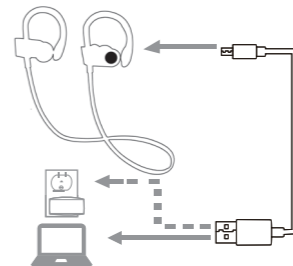
Power switch	Power on: Press and hold the center button on the headset for about 2 seconds to power on, until the blue and red indicator flashes. Pairing: When Bluetooth is turned on, set the phone to search for the headset. Find the pairing name, ZeroGravity and click it, to connect to the device. When paired indicator will flash blue. If prompted, enter pairing code 0000 to connect. Power off: Press for about 3 seconds to power off.
Receive/ Hang up phone call, Redial	Press the center button to receive phone calls, press it again to end the phone call. Press it for 2 seconds to reject the phone call. Press it twice to re-dial the last phone number you called.
Play/Pause	In music mode, press 1 time to pause, and press again to play. (when there is an incoming call, the music will stop.)
+ Next Song Volume Increase	In Music Mode, press it to play next song. Hold on the button to increase the volume while talking on the phone or in music mode.
- Previous song Volume Decrease	In Music Mode, press it to play previous song. Hold on the button to decrease the volume while talking on the phone or in music mode.

3. Product Specifications and Instructions

- Bluetooth Version : V4.2
 - Supported devices: Bluetooth mobile phones, Bluetooth speakers Bluetooth PC and other Bluetooth devices
 - Maximum work range: 33 Feet (10 Meters)
 - Talk time: up to 6 Hours
 - Music play time: up to 5 Hours*
 - Charging time: 2.5 Hours
 - Charging Voltage: DC 5V
 - Work Voltage: 3.7V
 - Battery Capacity: 80 mAh
 - Frequency Response: 2.402GHz~2.480GHz
- *The actual time may vary from mobile phone types and functions.

4. Headset Charging

- Connect the charger to the charging port.
- Insert the charger into a standard USB charging port. While charging, indicator light will turn Red.
- When fully charged, the red LED indicator will be off.



FCC Statement

Changes or modifications not expressly approved by the party responsible for compliance could void the user's authority to operate the equipment.

This equipment has been tested and found to comply with the limits for a Class B digital device, pursuant to Part 15 of the FCC Rules. These limits are designed to provide reasonable protection against harmful interference in a residential installation. This equipment generates uses and can radiate radio frequency energy and, if not installed and used in accordance with the

instructions, may cause harmful interference to radio communications. However, there is no guarantee that interference will not occur in a particular installation. If this equipment does cause harmful interference to radio or television reception, which can be determined by turning the equipment off and on, the user is encouraged to try to correct the interference by one or more of the following measures:

- Reorient or relocate the receiving antenna.
- Increase the separation between the equipment and receiver.
- Connect the equipment into an outlet on a circuit different from that to which the receiver is connected.
- Consult the dealer or an experienced radio/TV technician for help

This device complies with part 15 of the FCC rules. Operation is subject to the following two conditions (1) this device may not cause harmful interference, and (2) this device must accept any interference received, including interference that may cause undesired operation.