

## Content

1. Overview
2. DV304 feature
3. DV304 SYSTEM:
  - 3.1 Structure
  - 3.2 Key functions and LED indication
  - 3.3 Menu setting
  - 3.4 Operation manual
  - 3.5 Specification
  - 3.6 FAQ
  - 3.7 GPS tracker player and instruction

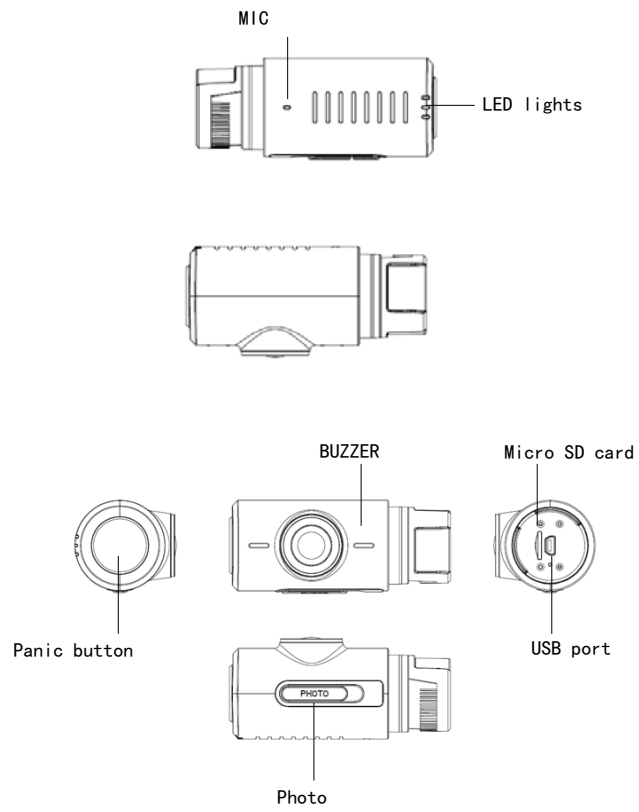
## ***Overview***

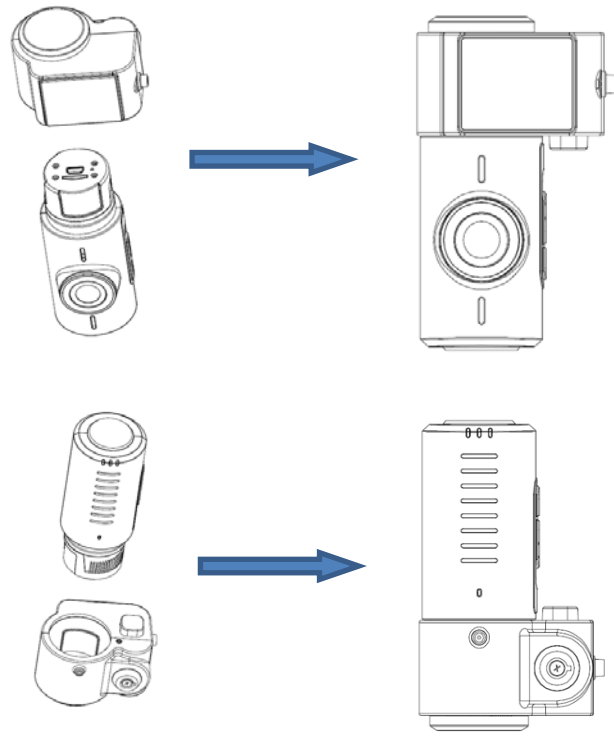
---

DV304 is a digital Full HD video recorder with the most advanced technology. It can record the high resolution image with the pixel as high as 1920X1080P FULL HD and take the photo of 3 mega pixels. Using micro card as the storage device, DV301 video recorder can record all the images and sounds during driving.

## ***Features***

- ◎170 degree ultra wide angle lens;
- ◎1920x1080P30fps high resolution recording;
- ◎Advanced H.264 video compression technology;
- ◎2 resolution forms (1080p&720p) can be changed for video recording
- ◎ 30/60 frames per second for smooth video flow
- ◎Seamless recoding, will not miss any data between the files.
- ◎ External GPS, record traffic speed, driving track (Optional)
- ◎ G-sensor to keep records of sensor data and real-time display on the player.
- It will protect the file from overwriting once shock was detected (Optional)
- ◎Manual lock the file ( protect the files (30s before the press, and 30s after the press) from overwriting)
- ◎Auto power on and recording once engine is on.
- ◎Cycle recording and pre-recording
- ◎Date and time stamps can be put in de videos
- ◎Screenshot from the videos





## Key functions

### Panic button

During recording: press the panic button, it will protect the files (30s before pressing & 30s after pressing) from overwriting.

When powered on and pre-recording mode:.. press panic button will change from Pre-recording to recording mode, and lock current file (protect current file from overwriting).

Parking mode: Press it will exit time lamps, start normal recording and lock current file (protect the file from overwriting)

**Remark:** when the size of locked file has reached 70% of the card capacity, it cannot lock any new files.

### Photo key

It will take a photo of current recording resolution.

### LED Indicator

1. **"POW" (Green & Red):** (Power Indicator)
  - \* Red light: LED will keep ON within 5 seconds when power connect, and the LED will change to GREEN when the device start recording.
  - \* Green light: LED will keep ON when normal recording in progress; The LED will flashing when file lock (EVENT mode), and LED will back to ON status when system back to normal recording;
2. **"GPS" (Blue):** LED will keep ON once GPS positioned
3. **"WIFI" (Yellow):** LED will keep ON once WIFI module active (only for DV303 model)

Remark:

A) Both "POW" LED (RED/GREEN) flashing when event file (Lock file) storage up to or exceed 70% SD Card storage;

B) ALL LED Flashing when system firmware being upgrade (Please ensure the power are keep ON during upgrade process)



## Buzzer

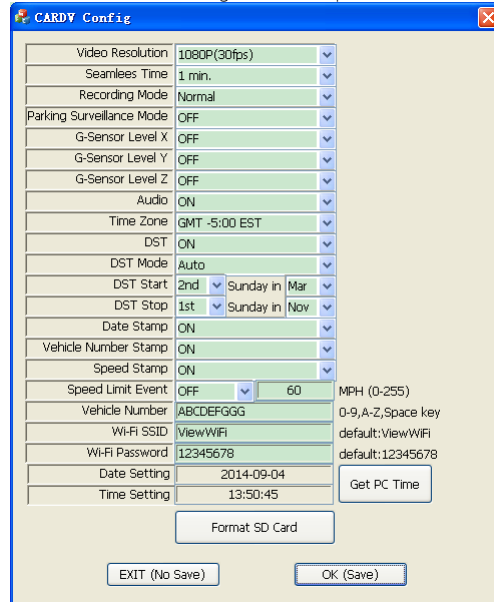
Buzzer will working as following conditions:

- 1) Power ON/OFF : 3 continue beeps;
- 2) Photo Snapshot : 1 beep
- 3) GPS positioned : 1 beep
- 4) Panic button active/ G Sensor active/ Overspeed (when GPS module present) : 2 continue beeps;
- 5) Time setting via config tool : 2 continue beeps;
- 6) SD Card format via config tool : 2 continue beeps;
- 7) When lock file over 70% in SD Card, buzzer will beep sound in every second, it can disable by pressing Panic button
- 8) SD card error or no Card detect: Buzzer will beep continue, and it can disable by pressing Panic button and shut-down the device

The device is front WIFI camera for vehicular use, and it doesn't connect to AC power in directly or indirectly.



1. Click the "DV304 Config.exe", as the picture below:



2. Configuration Menu setting:

\* Video Resolution: Video Resolution 1080P(30fps)

\* Resolution for video recording

\* Available at 1080P/30fps, 720P/60fps, 720P(30fps)

\* Default Setting at : 1080P/30fps

\* Seamless time: Seamless Time 1 min.

\* Select the length of each file: 1/3/5 min.

(When SD card is full, it will automatically overwrite base on FIFO (First In First Out))

\* Default Setting at : 1 min

\* Recording mode: Recording Mode Normal

\* Start mode when device start-up



\* Normal mode : for Normal mode, this will base on "Video Resolution" video recording, for example at 1080P/30fps, 720P/60fps, 720P(30fps);

\* Event only : for Event mode, the device only recording base on "Video Resolution" when Event activate (including Panic button, G-sensor trigger, Over-speed), plus there will be have 10 second Pre-recording/ 50 second Post-recording (totally 1 mins Event recording); (the system will always have 10 seconds buffer to reserve for Event happen)

\* Priority : for Priority mode, it will provide Normal mode + Event Mode, so that the normal recording will be at 1FPS, and the recording file will trigger to full frame as "Video Resolution" when Event trigger;

\* Default Setting at : Normal Mode

\* Parking Surveillance Mode: 

\* Set the time for time laps recording at 1FPS: OFF/ 1hour/2hour/3hours.


\* Once reached set time, DV301 will automatically power off.

\* Default Setting at : OFF

\* G-sensor level X: 

\* Set the sensitivity of G-sensor at X direction (to trigger Event file) : OFF/Level 1(0.4g)/ Level 2 (0.6g) / Level 3 (0.8g), Level 4 (1g), Level 5(1.1g), Level 6(1.2g), Level 7(1.3g); 1 is most sensitive; 7 is most insensitive. (Unit : g (Gravity))

\* Default Setting at : OFF

\* G-sensor level Y: 

\* Set the sensitivity of G-sensor at X direction (to trigger Event file) : OFF/Level 1(0.4g)/ Level 2 (0.6g) / Level 3 (0.8g), Level 4 (1g), Level 5(1.1g), Level 6(1.2g), Level 7(1.3g); 1 is most sensitive; 7 is most insensitive. (Unit : g (Gravity))

\* Default Setting at : OFF

\* G-sensor level Z: 

\* Set the sensitivity of G-sensor at X direction (to trigger Event file) : OFF/Level 1(0.4g)/ Level 2 (0.6g) / Level 3 (0.8g), Level 4 (1g), Level 5(1.1g), Level 6(1.2g), Level 7(1.3g); 1 is most sensitive; 7 is most insensitive. (Unit : g (Gravity))

\* Default Setting at : OFF

\* Audio : 

\* Enable / Disable auto recording;

\* Default Setting at : ON

Time Zone

GMT -5:00 EST

Time Zone setting

Default Setting at : GMT -5:00 EST

DST

ON

DST Mode

Auto

DST Start

2nd

Sunday in

Mar

DST Stop

1st

Sunday in

Nov

DST (Daylight Saving Time) :

Setup the DST Function mode:

Auto: DST will automatically start from 2nd Sunday of 3rd month in every year/ and finish by 1st Sunday in Novmeber in same year;

Manual : DST start/finish by user define

Default Setting at : ON, AUTO

Date Stamp

ON

Put the date/time stamp on the video: ON/OFF;

Default Setting at : ON

Vehicle Number Stamp

ON

Put the vehicle number ID stamp on the video: ON/OFF;

Default Setting at : ON

Speed Stamp

ON

Watermark with GPS value/ Speed: ON/OFF;

Default Setting at : ON

Speed Limit Event

OFF

60

MPH (0-255)

File will become Event when over this speed. The range from 0 to 255 MPH,

Default Setting at : OFF, 60MPH

Vehicle Number

ABCDEFGGG

0-9,A-Z,Space key

Valid character : Space, 0-9, A-Z.

9 Characters available, default with empty space

Must be ensure there are 9 characters (can using space if there are empty space), in order to ensure system stable this car number must be keep as 9 characters (system will hang up if this parameter less than 9 characters)

## FCC Requirement

You are cautioned that changes or modifications not expressly approved by the party responsible for compliance could void your authority to operate the equipment.

This device complies with Part 15 of the FCC Rules. Operation is subject to the following two conditions:

- (1) this device may not cause harmful interference, and
- (2) this device must accept any interference received, including interference that may cause undesired operation.

This equipment complies with FCC RF radiation exposure limits set forth for an uncontrolled environment. This equipment should be installed and operated with a minimum distance of 20 centimeters between the radiator and your body.