

DR101 / DR102

NFC DRIVER ID READER/WRITER
USER MANUAL

TABLE OF CONTENTS

DR101 NFC Driver ID Reader/Writer with RS232 Connection 3

DR102 NFC Driver ID Reader/Writer with USB Connection 3

Device Installation 4

Installation on Computer 6

Device Specifications 7

Certification 8

FCC/IC Warning Statement 8



Caution

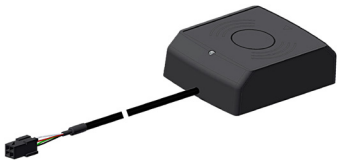
- To prevent electric shock, DO NOT OPEN THE READER/WRITER CASE. The components inside the are carrying high voltage. There are no user serviceable parts.
- Avoid exposing monitor to water, rain, moisture etc. The reader/writer is not waterproof. Any moisture inside can cause extensive damage.

DEVICE DESCRIPTION

PART NO.

DESCRIPTION

DR101



NFC DRIVER ID READER/WRITER,
RS232 CONN, 10 FT CBL, FOR
DV440

DR102



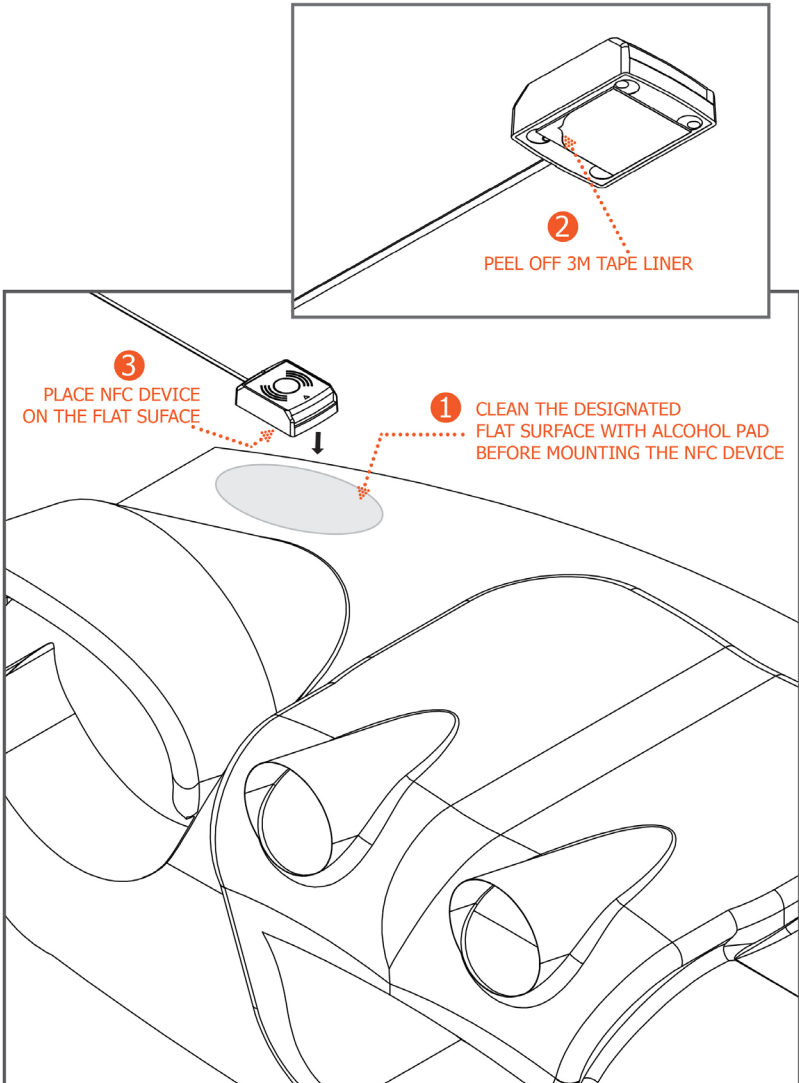
NFC DRIVER ID READER/WRITER,
USB CONN, 3 FT CBL, FOR PC USE

DV440 WITH DR101

Installation Diagram

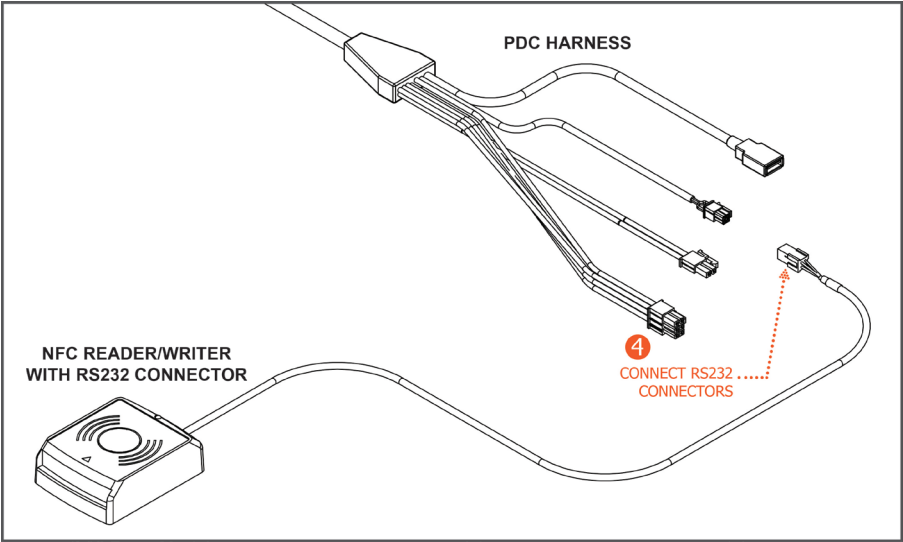
INSTALLATION

1. Clean the ABS flat surface with an alcoholic wipe and let it dry.
2. Remove the liner from the 3M tape on the bottom of the DR101.
3. Place the device on the flat surface.
4. Route the wire to connect to the RS232 port on the DV457.
5. Please refer to <https://wiki.roscocloud.com> for a more detailed instruction.

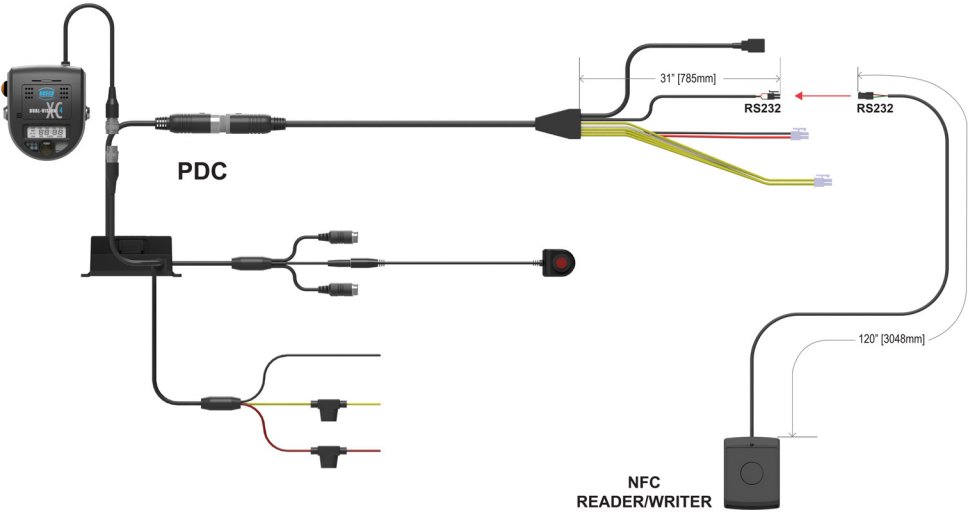


DV440 WITH DR101

Installation Diagram Cont.



CONNECTION DIAGRAM



DV440 WITH DR101

Driver ID Reader/Writer Operating with DVXC4

- When the installation is completed, turn on the DVXC4.
 - Swipe an applicable ID card/tag on the surface of the device. A successful swipe yields 1 beep, a card failure yields 3 beeps.
 - If a card/tag is not scanned 90 seconds after the DVXC4 turns on, then an audible alert will activate on the DVXC4.
-

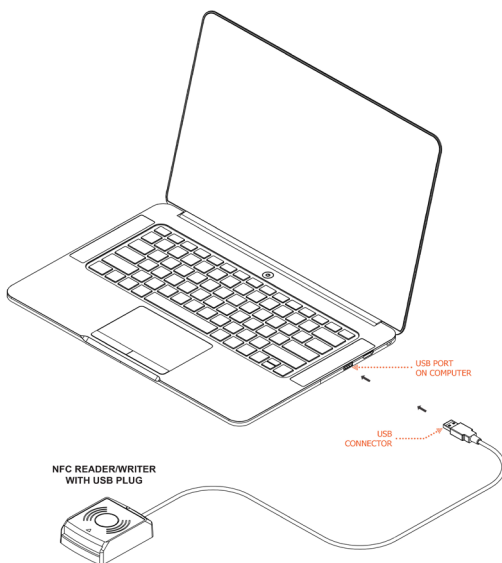
DR102 NFC WRITER

DR102 NFC Driver ID Reader/Writer with USB Connection

The DR102 is a desktop NFC reader/writer connect to the PC for programming driver ID card/tag.

Installation on Computer

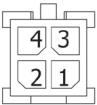
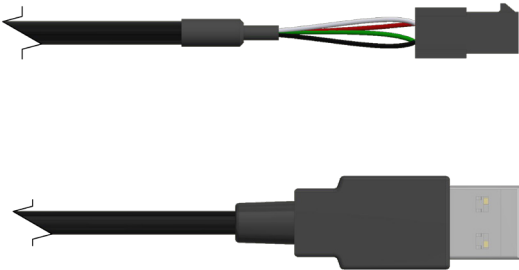
- i. Plug in the device via USB plug on the computer.
- ii. Visit <https://wiki.roscocloud.com> and download the NFC programming guide.



DEVICE TECHNICAL SPECIFICATIONS

DR101/ DR102

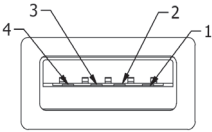
Dimensions W x H x D:	61 x 80 x 26 mm
Weight:	150g
Cable Length:	
DR101:	3m
DR102:	1m
Voltage Input:	+/- 5V DC
Operation Distance:	3 cm
Interface Level:	Standard RS232 Signal Level
Interface Level:	RS232 Connection: Micro-Fit 3.0 Plug Molex 0430200401
Operating Environment:	
Temperature:	-20°C to +80°C
Relative Humidity:	10% to 95% Non-condensing
Storage Environment:	
Temperature:	-40°C to +90°C
Relative Humidity:	10% to 95% Non-condensing



4-PIN RS232

MOLEX MICRO-FIT 3.0 PLUG

PIN#	SINGAL	WIRE COLOR
1	RxD (INPUT)	GREEN
2	GND	BLACK
3	+5Vdc (Vcc)	RED
4	TxD (OUTPUT)	WHITE



USB TYPE A
MALE CONNECTOR

PIN#	NAME	WIRE COLOR
1	Vcc	RED
2	DATA -	WHITE
3	DATA +	GREEN
4	GND	BLACK

Certification

FCC ID: 2AEDLDR1002020

IC: 25914-DR1002020

FCC STATEMENT

Warning:

This device complies with Part 15 of the FCC Rules. Operation is subject to the following two conditions: (1) This device may not cause harmful interference, and; (2) This device must accept any interference received, including interference that may cause undesired operation.

Changes or modifications

to this unit not expressly approved by the party responsible for compliance could void the user's authority to operate the equipment.

NOTE: This equipment has been tested and found to comply with the limits for a Class B digital device, pursuant to part 15 of the FCC Rules. These limits are designed to provide reasonable protection against harmful interference in a residential installation. This equipment generates, uses, and can radiate radio frequency energy and, if not installed and used in accordance with the instructions, may cause harmful interference to radio communications. However, there is no guarantee that interference will not occur in a particular installation. If the equipment does not cause harmful interference to radio or television reception, which can be determined by turning the equipment off and on, the user is encouraged to try to correct the interference by one or more of the following measures:

- Reorient or relocate the receiving antenna
- Increase the separation between the equipment and the receiver
- Connect the equipment into an outlet on a circuit different from that to which the receiver is connected.
- Consult the dealer or an experienced radio/TV technician for help.

NOTE: This device and its antenna(s) must not be co-located or operation in conjunction with any other antenna or transmitter

RF Exposure Statement

To maintain compliance with FCC's RF Exposure Guidelines, this equipment should be installed and operated with minimum distance of 20cm of the radiator body. This device and its antenna(s) must not be co-located or operation in conjunction with any other antenna or transmitter

ISED CANADA STATEMENT

This device complies with RSS Gen of the Canada Rules. Operation is subject to the following two conditions:

- 1) this device may not cause interference and
- 2) this device must accept any interference, including interference that may cause undesired operation of the device.

Radiation Exposure: This equipment complies with Canada radiation exposure limits set forth for an uncontrolled environment

RF Exposure Statement

To maintain compliance with FCC's RF Exposure Guidelines, this equipment should be installed and operated with minimum distance of 20cm the radiator your body. This device and its antenna(s) must not be co-located or operation in conjunction with any other antenna or transmitter

DÉCLARATION DE L'ISED CANADA

Cet appareil est conforme aux Règles du RSS Gen du Canada. L'opération est sous réserve des deux conditions suivantes :

- 1) cet appareil ne peut pas causer d'interférences
- 2) ce dispositif doit accepter toute interférence, y compris provoquer le fonctionnement indésirable de l'appareil.

Exposition aux rayonnements: Cet équipement est conforme aux radiations du Canadalimites d'exposition pour un environnement incontrôlé

noncé d'exposition RF

TPour maintenir le respect des guides d'exposition RF d'IC,équipement doit être installé et actionné avec une distance minimale de 20cm le radiateur de votre corps. Cet appareil et ses antennes ne doivent pas êtreco-localisé ou en opération en conjonction avec toute autre antenne ouémetteur

NOTES



A CENTURY OF AUTOMOTIVE VISION SAFETY

90-21 144th Place, Jamaica, New York 11435

TEL (800) 227-2095 • FAX (718) 297-0323

techsupport@roscovision.com

www.roscomirrors.com www.roscovision.com