

## Programming



Enable the device recording mode on the panel, the keypad will display "**PRESS PROGRAM BUTTON OF DEVICE**".

Press and hold the keyfob  &  keys **simultaneously**.

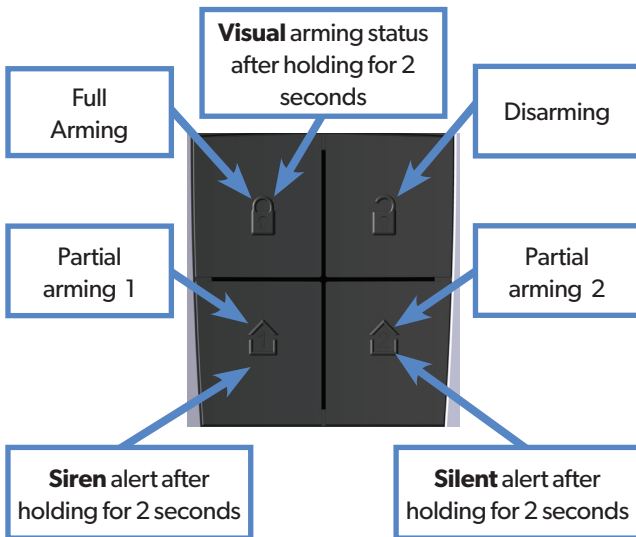
When releasing, the keyfob emits a beep and a flash every second then the keyfob is recorded by the panel.

If the keyfob is not recorded, confirm that the keypad is displaying:

PRESS PROGRAM  
BUTTON OF DEVICE

then press and hold the keyfob  &  keys again (**by strongly pressing the buttons**).

## Commands



## Operation

Press briefly and release the corresponding button to arm (full arming or partial arming) or disarm.

The first beep confirms the button has been pressed. Two beeps confirm that the panel has received the command. If the panel has not received the command, only one beep is emitted by the keyfob.

A red double flash confirm the system full or partial arming. A green double flash confirms disarming.

To trigger an alert, press and hold one of the partial arming keys for 2 seconds.

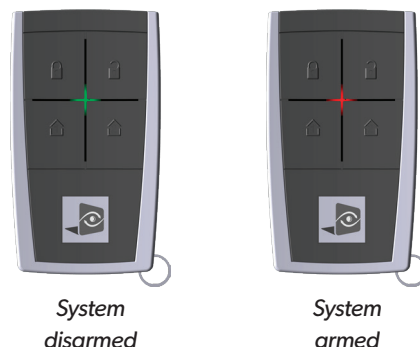
> Note : This keyfob is powered by a **CR3032** lithium battery with a 5-year battery life.

The keyfob emits delay beeps when the system is armed. You can determine if a door contact is still open.

If a device is detecting while the panel is arming, the keyfob emits a 4-second long beep.

You do not need to wait for the beeps to stop to leave the premises. The beeps will automatically stop after the configured exit delay.

## Visual arming status



**Security notes / (FR) Notes de sécurité / (DE) Hinweise zur Sicherheit****English****Français****Deutsch**

- Remove the battery before any maintenance !
  - **WARNING**, there is a risk of explosion if a battery is replaced by an improper model !
  - Observe polarity when setting up the battery!
  - Do not throw the battery when it is used! Dispose of it properly according to Lithium Metal requirements
- Retirez la batterie avant toute opération de maintenance !
  - Attention ! Il y a un risque d'explosion si la batterie utilisée est remplacée par un mauvais modèle !
  - Respectez la polarité lors de la mise en place de la batterie !
  - Ne jetez pas la batterie usagée ! Ramenez-la à votre installateur ou à un point de collecte spécialisé.
- Batterien vor jeglichen Wartungsarbeiten entfernen!
  - Vorsicht, es besteht Explosionsgefahr, wenn eine Batterie durch eine Batterie falschen Modells ersetzt wird!
  - Achten Sie beim Einsetzen der Batterie auf die Polung!
  - Entsorgen Sie Batterie nicht im normalen Haushaltsmüll! Bringen Sie Ihre verbrauchten Batterie zu den öffentlichen Sammelstellen.

**FCC Regulatory Information for USA and CANADA**

FCC Part 15.21 Changes or modifications made to this equipment not expressly approved by RSI Video Technologies may void the FCC authorization to operate this equipment.

**FCC Part 15.105 Class B**

This equipment has been tested and found to comply with the limits for a Class B digital device, pursuant to Part 15 of the FCC Rules. These limits are designed to provide reasonable protection against harmful interference in a residential installation. This equipment generates, uses and can radiate radio frequency energy and, if not installed and used in accordance with the instructions, may cause harmful interference to radio communications. However, there is no guarantee that interference will not occur in a particular installation. If this equipment does cause harmful interference to radio or television reception, which can be determined by turning the equipment off and on, the user is encouraged to try to correct the interference by one or more of the following measures:

- > Reorient or relocate the receiving antenna.
- > Increase the separation between the equipment and receiver.
- > Connect the equipment into an outlet on a circuit different from that to which the receiver is connected.
- > Consult the dealer or an experienced radio/TV technician for help.

Radio frequency radiation exposure information according 2.1091 / 2.1093 / OET bulletin 65

This equipment complies with FCC radiation exposure limits set forth for an uncontrolled environment.

Cet équipement est conforme aux limites d'exposition aux rayonnements IC établies pour un environnement non contrôlé.

This transmitter must not be co-located or operating in conjunction with any other antenna or transmitter.

This device complies with Part 15 of the FCC Rules and with Industry Canada licence-exempt RSS standard(s)

Operation is subject to the following two conditions:

- 1 This device may not cause harmful interference, and
- 2 This device must accept any interference received, including interference that may cause undesired operation.

Le présent appareil est conforme aux CNR d'Industrie Canada applicables aux appareils radio exempts de licence.

L'exploitation est autorisée aux deux conditions suivantes :

- 1 L'appareil ne doit pas produire de brouillage, et
- 2 L'utilisateur de l'appareil doit accepter tout brouillage radioélectrique subi, même si le brouillage est susceptible d'en compromettre le fonctionnement..

# KF 240/641/742 4-BUTTONS REMOTE KEYFOB

## ELECTRICAL PROPERTIES

Panel compatibility	All panels
Power requirements	Type C
Battery type	1x Lithium, CR3032
Nominal Voltage	3 V
Battery life	5 years
RF technology	S2View®
Radio Type	Spread Spectrum Bidirectional
Operating frequency	868MHz - KF240 (Europe, Africa, Asia) 915MHz - FHSS - KF641 (USA, Canada, South America) 920MHz - FHSS - KF742 (Australia, South America)
Transmission security	AES encryption algorithm
Antenna	Integrated
Maximum keyfobs registered	22

## PHYSICAL PROPERTIES

Material	Plastic : ABS
Dimensions	70 mm x 40 mm x 10 mm
Weight	40 g
Operating temperature	0°/+40°C (32°/104°F)
Max relative humidity	70%, without condensing

## Certifications

### 868MHz (KF 240)



In accordance with Annex IV of the R&TTE Directive 1999/5/EC  
 NF EN50131-3 2009 Grade 2 - Type B  
 NF EN50130-4 2011  
 NF EN50130-5 2011 Class II

### 915MHz (KF 641)



USA FCC (Part 15C)  
 Canada IC (RSS-210 Issue 8)

### 920MHz (KF 742)



Australia C-Tick  
 (AS/NZS4268, AS/NZS 60950)



This symbol on the product or on its packaging indicates that this product should not be treated as household waste. It must be handed over to the applicable collection point for the recycling of electrical and electronic equipment. By ensuring this product is disposed of correctly, you will help prevent potential negative consequences for the environment and human health. The recycling of materials will help to conserve natural resources. For more information about recycling of this product, please contact your local municipality, your waste disposal service or the company that installed the product.



The EC declaration of conformity of this product is available by flashing this QR code.

### EMEA SALES

23, avenue du Général Leclerc  
 92340 BOURG-LA-REINE  
 FRANCE  
 E-Mail : emeasales@rsivideotech.com

### North American Headquarters

1375 Willow Lake Blvd, Suite 103  
 Vadnais Heights, MN 55110  
 USA  
 E-Mail : usasales@rsivideotech.com

