

**Wireless LAN Card
RL2400**

USER'S MANUAL

FCC INFORMATION TO

NOTE: This equipment has been tested and found to meet the FCC limits for a Class B digital devices, pursuant to the FCC Rules. These limits are designed to provide reasonable protection against harmful interference in a residential environment. This equipment generates, uses, and can radiate radio frequency energy and, if not installed and used in accordance with the instructions, may cause harmful interference to radio communications. There is no guarantee that interference will not occur with a particular installation. If this equipment does cause harmful interference to radio or television reception, which can be determined by turning the equipment off and on, the user is encouraged to try to correct the interference by one of more of the following measures:

- Reorient or relocate the receiving antenna.
- Increase the separation between the equipment and the receiver.
- Connect the equipment into an outlet on a circuit different from that to which the receiver is connected.
- Consult the dealer or an experienced radio/television technician for help.

Warning:

Changes or modifications to the instructions may void the user's authority to operate this equipment.

NOTE: This equipment has been tested and found to comply with the limits for a Class B digital device, pursuant to Part 15 of the FCC Rules. These limits are designed to provide reasonable protection against harmful interference in a residential installation. This equipment generates, uses, and can radiate radio frequency energy and, if not installed and used in accordance with the instruction manual, may cause harmful interference to radio communications. However, there is no guarantee that interference will not occur in a particular installation. If this equipment does cause harmful interference to radio or television reception, which can be determined by turning the equipment off and on, the user is encouraged to try to correct the interference by one of more of the following measures:

- Reorient or relocate the receiving antenna
- Increase the separation between the equipment and receiver
- Connect the equipment into an outlet on a circuit different from that to which the receiver is connected.
- Consult the dealer or an experienced radio/TV technician for help.

Warning: Changes or modifications not expressly approved by Radio-Link Technology Co., Ltd. could void the user's authority to operate the equipment.

(1) ADMINISTRATION SYSTEM	1-2
(2) RL2400 PCMCIA ADAPTER SETUP	3-5
(3) NETWORK SETUP	6-13
(4) USAGE	14-16

- **Step 2**
- Insert the RL2400 PCMCIA Wireless LAN Card into PCMCIA socket in your Notebook PC.
- **Step 3**
- Insert the diskette label " RL2400 Driver " into the floppy driver A.
- **Step 4**
- Change the directory to A:\FWM
- **Step 5**
- Type " LOADCARD 0130CH03 BIN /O ". This will program the card with the updated firmware. After you see the screen showed as Figure 1-1, it means the card be programmed completely.

```

R:\NW>loadboard 0130csh03.bin /o
Am79c930 LoadCard Flash Utility Version 2.1 8/27/96
Overwrite Q13 / ISH Fnp Record
Am29f010 detected
PCMCIA mode detected
Am29f010 detected
0130csh03.bin: 129024 bytes
FLASH EPROM successfully erased*
FLASH EPROM successfully programmed*
Card slot turned off.
R:\NW>

```

Figure 1-1

- **Step 6**
- Next type " NID_IN C T XX XX XX XX XX XX ", where XX XX XX XX XX XX XX is the unique network ID.

Chapter 2 RL2400 PCMCIA ADAPTER SETUP

- **Step 1**
- Remove the RL2400 PCMCIA Wireless LAN Card and reboot your Notebook PC under Windows 95.
- Insert RL2400 PCMCIA Wireless LAN Card. Windows 95 will recognize the card that has been inserted automatically.
- It then display a dialog boxes titled " New Hardware Found " ; (see Figure 2-1).
- Jump to Step 4

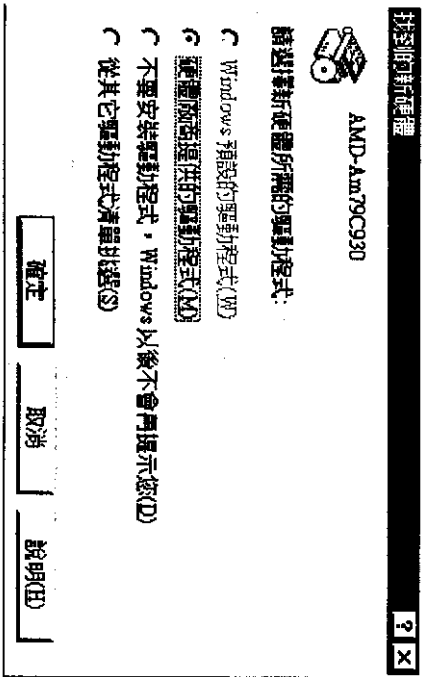


Figure 2-1

If the dialog box does not appear, run " Control Panel " and click the " Add New Hardware " icon; (see Step 2).

- Step 2
- Choose "No", then click "Next"; (see Figure 2-2).

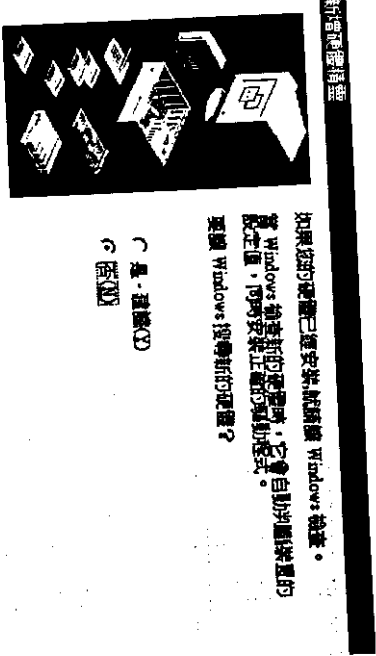


Figure 2-2

- Step 3
- Highlight "Network Adapters", click "Next"; (see Figure 2-3)

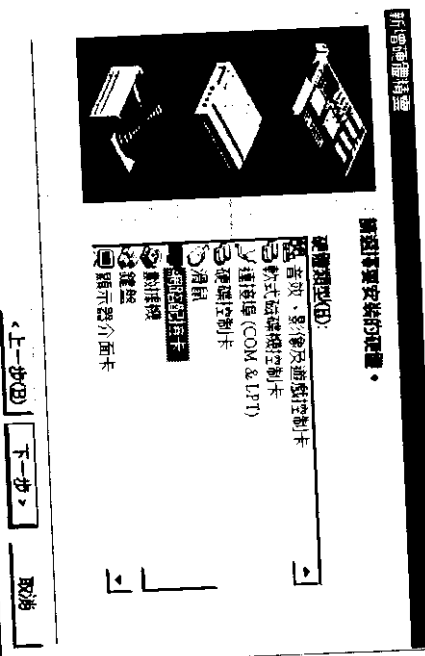


Figure 2-3

- Step 4
- Insert the diskette label "RL2400 Driver" into the floppy driver A.
- Type "A:\DRIVER\ ", click "OK"; (see Figure 2-4)

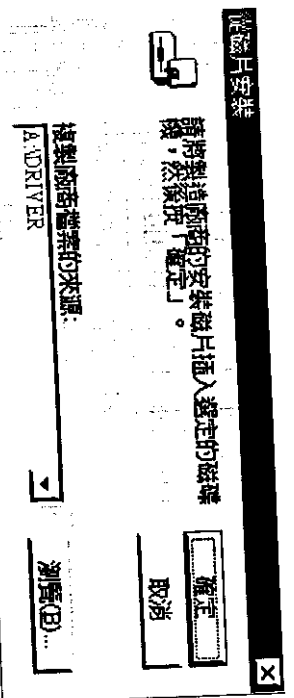


Figure 2-4

Chapter 3 NETWORK SETUP

Before setup the network adapter, be sure that a client is configured with at least the IPX/SPX protocol, NetBEUI and TCP/IP protocol.

- **Step 1**
After installing the hardware and software, verify your Windows 95 Network setup via the "Network" icon in "Control Panel".

- **Step 2**
Highlight the "InTalk Access Point Client" and click "Properties"; (see Figure 3-1)

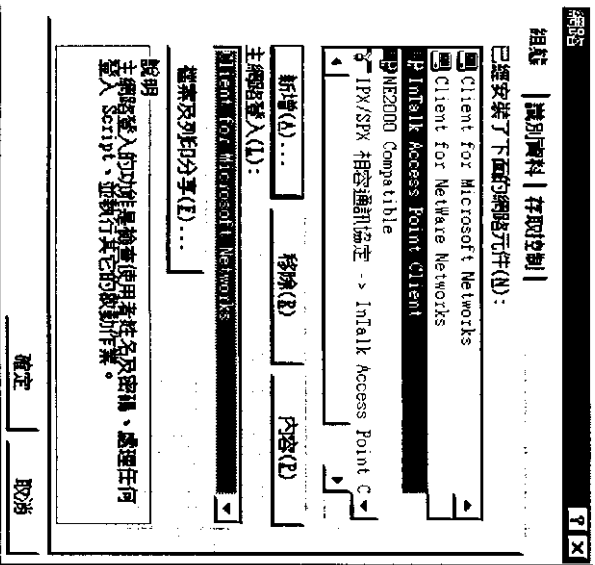


Figure 3-1

-6-

- **Step 3**
Choose "Enhanced mode (32 bit and 16 bit) NDIS driver"; (see Figure 3-2)

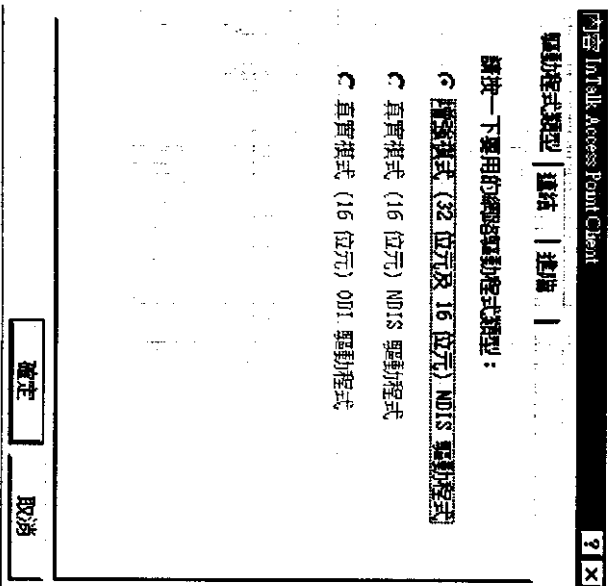


Figure 3-2

-7-

- **Step 4**
- Click " Bindings " in InTalk Access Point Client Properties Panel.
- Choose " IPX/SPX ", " NetBEUI ", " TCP/IP " protocol.
- Click " OK "; (see Figure 3-3).

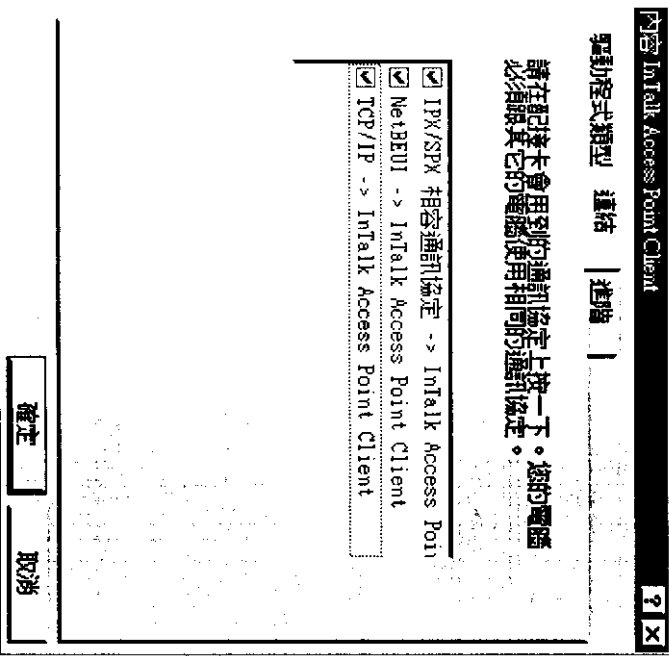


Figure 3-3

- **Step 5**
- Click " Advanced " in InTalk Access Point Client Properties Panel.
- Enable all of Properties and use default value and click " OK "; (see Figure 3-4).

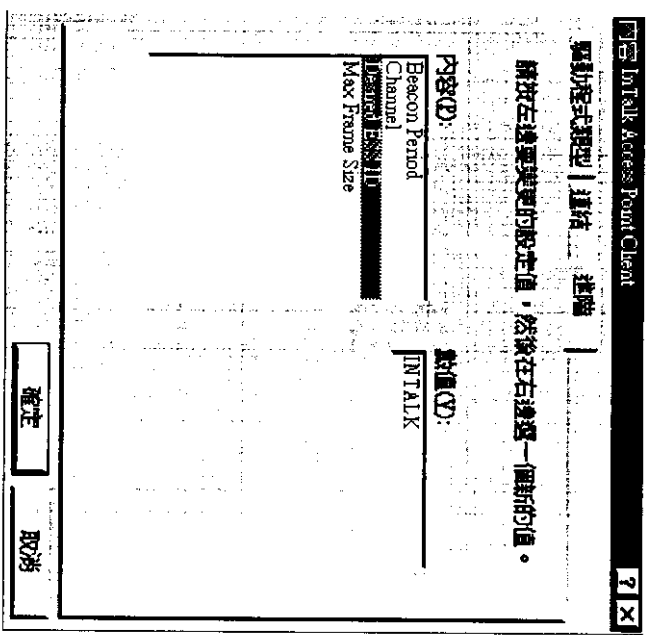


Figure 3-4

- **Step 6**
- Click " Identification " in Network Panel. Type your " Computer name " and " Workgroup " .
- Be sure to configure each computer with unique computer name but identical workgroup.
- Click " OK " ; (see Figure 3-5).

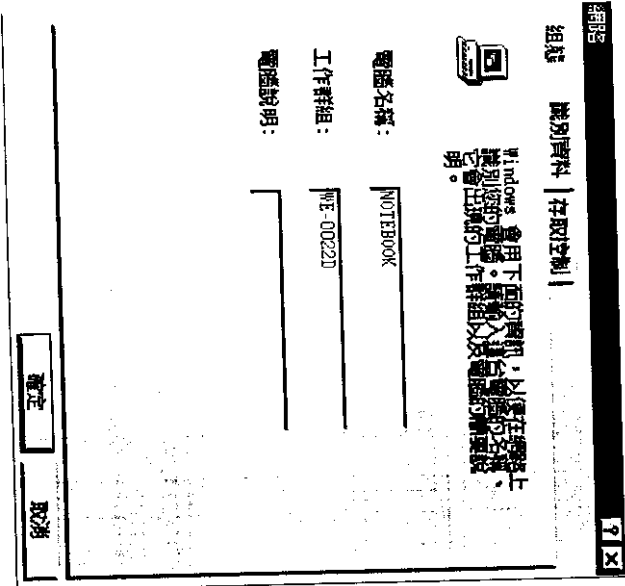


Figure 3-5

- **Step 7**
- Click " Access Control " in Network Panel.
- Choose " Share-level access control " .
- Click " OK " ; (see Figure 3-6).

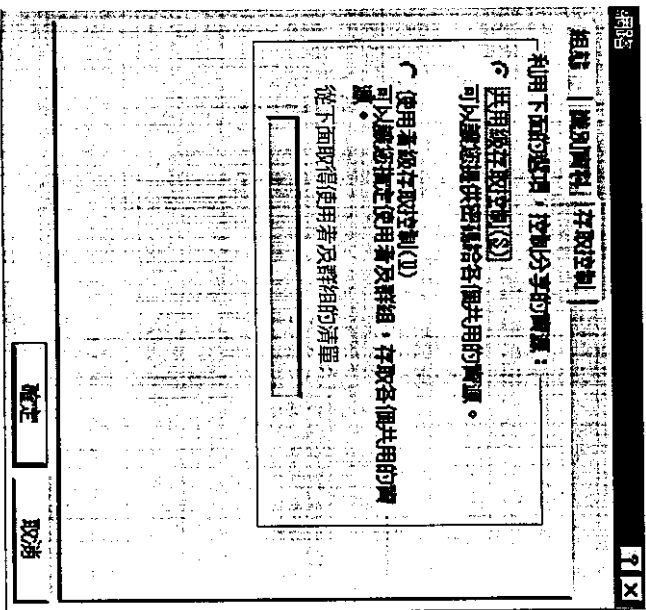


Figure 3-6

- **Step 8**
- Click " Configuration " in Network Panel.
- Primary Network Login:
- Choose " Client for Microsoft Network "; (see Figure 3-7).

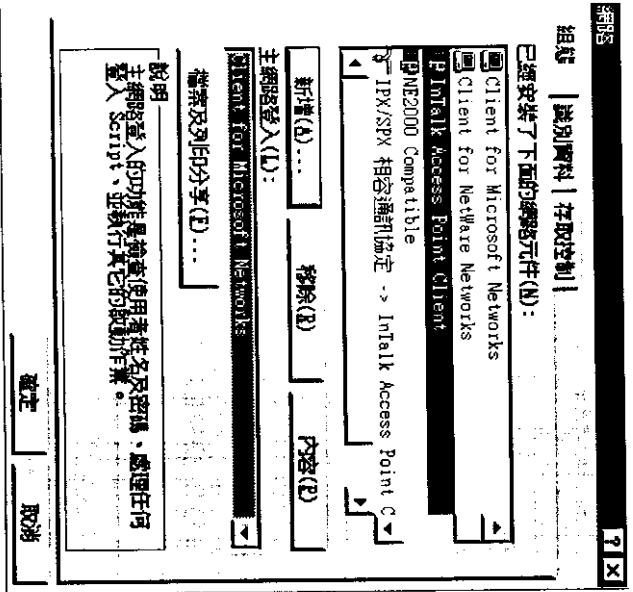


Figure 3-7

- Click " File and Printer Sharing " in Network Panel; (see Figure 3-8).

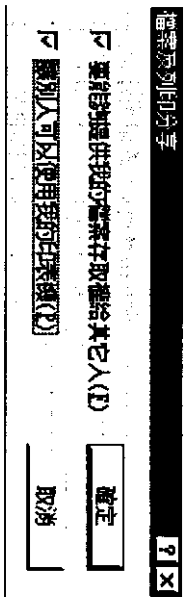


Figure 3-8

Chapter 4 Usage

- Now the other Notebooks are visible. In order to access resource to each other, All of Notebooks need to share their resource.
- This is accomplished by set the right of sharing for the files, folders or drivers.

Step 1

- Entering Explorer from Start and highlight the drivers, folders or files that you wish to share.
- Click the " File in " Exploring panel. It will bring up a context menu with " Sharing "... option. Click the Sharing option; (see Figure 4-1)

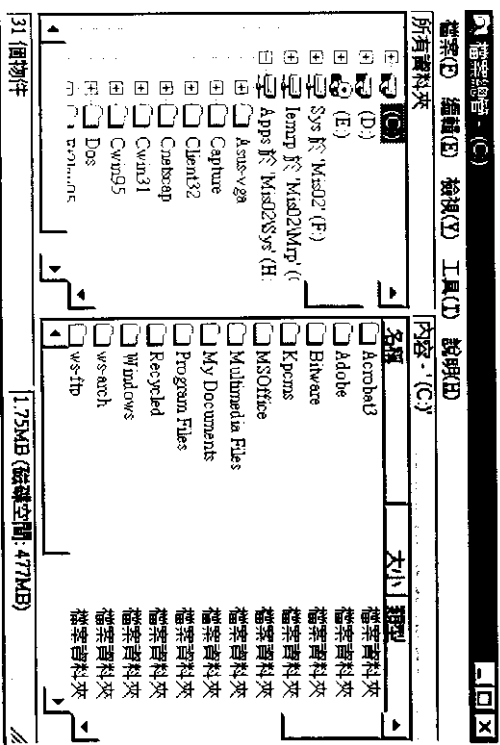


Figure 4-1

- **Step 2**
- Click the " Sharing " in Driver(C:) in Properties Panel.
- Make the appropriate selections and type your Share Name.
- Click " OK "; (see Figure 4-2)

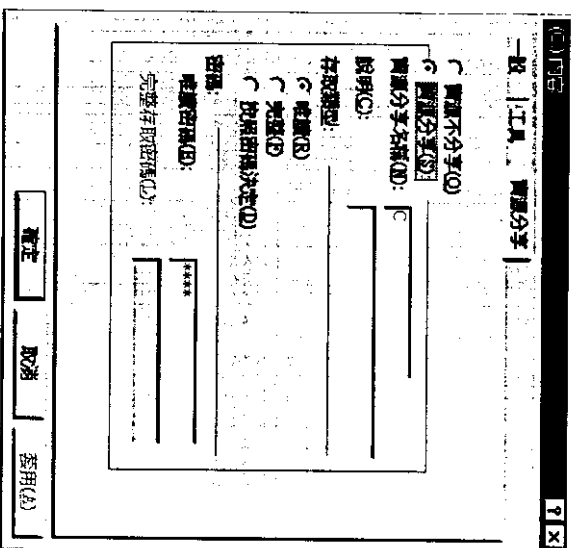


Figure 4-2