



Gigaware

12-495
User's Guide

FM Transmitter for iPod®



Patent pending.



Please read this User's Guide before using your new transmitter.

iPod is a trademark of Apple Inc., registered in the U.S. and other countries.

Package contents

- FM Transmitter
- User's Guide
- Quick Start

Features

- Listen to your iPod music through your FM radio.
- Charge your iPod while the music plays.
- Easily find an interference-free FM channel with the auto search feature.

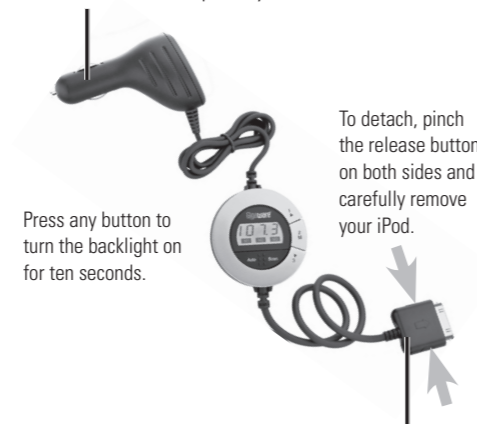
Important Safety Information

Connect and operate this product BEFORE you drive. Attempting to drive and scan for radio stations at the same time could cause a traffic accident. Please drive responsibly.

2

1 Connect the Transmitter

1. Insert the transmitter's power plug into your car's power outlet. The backlight turns on and the transmitter displays the last used frequency.



Press any button to turn the backlight on for ten seconds.

To detach, pinch the release buttons on both sides and carefully remove your iPod.

2. Insert the 30-pin connector into your iPod with the arrow facing up. Your iPod will start charging.

3

2 Tune the Transmitter

Interference caused by your car's antenna, design, and physical location (such as under steel bridges and inside parking garages) can prevent the transmitter from detecting frequencies and limit sound quality. In these cases, you may need to select a saved frequency, autoscan for a clear frequency, or manually tune a frequency.

Auto-scanning for a Frequency

Hold down **Auto Scan** until the display changes. Your FM transmitter starts searching for about 30 seconds automatically and stops at a clear frequency.

Manually Tuning a Frequency

1. Hold down **2M** until **M1**, **M2**, and **M3** all flash on the display.
2. Press, but do not hold down **1▲** or **3▼** to find the desired frequency.
3. Wait until the display stops flashing.

4

Saving Frequencies

To save the displayed frequency:

1. Hold down **2M** until **M1**, **M2**, and **M3** all flash on the display.
2. Hold down **1▲**, **2M**, or **3▼** for two seconds to save the displayed frequency to **M1**, **M2**, or **M3**.

Selecting a Saved Frequency

Press **1▲**, **2M** or **3▼** to select a saved frequency. The display shows **M1**, **M2**, or **M3** and its corresponding frequency.

3 Tune Your Radio

Tune your car's FM radio to the frequency displayed on the transmitter.

4 Listen to Your Music

Use your iPod's controls to listen to music. If the sound is distorted, you can tune your transmitter and radio to a new frequency.

5

Specifications

Power 13.8V DC car power socket
 Transmitting frequency 88.1–107.9 MHz
 with 0.2 MHz step
 Operating range..... 10–30 feet

Specifications are subject to change and improvement without notice. Actual product may vary from the images found in this document.

FCC Information

This equipment has been tested and found to comply with the limits for a Class B digital device, pursuant to Part 15 of the FCC Rules. These limits are designed to provide reasonable protection against harmful interference in a residential installation. This equipment generates, uses, and can radiate radio frequency energy and, if not installed and used in accordance with the instructions, may cause harmful interference to radio communications. However, there is no guarantee that interference will not occur in a particular installation. If this equipment does cause harmful interference to radio or television reception, which can be determined by turning the equipment off and on, the user is encouraged to try to correct the interference by one or more of the following measures:

- Reorient or relocate the receiving antenna.
- Increase the separation between the equipment and receiver.
- Connect the equipment into an outlet on a circuit different from that to which the receiver is connected.
- Consult the dealer or an experienced radio/TV technician for help.

If you cannot eliminate the interference, the FCC requires that you stop using your FM Transmitter. Changes or modifications not expressly approved by Ignition L.P. may cause interference and void the user's authority to operate the equipment. This device complies with Part 15 of the FCC rules. Operation is subject to the following two conditions: (1) This device may

6

not cause harmful interference, and (2) This device must accept any interference received, including interference that may cause undesired operation.

Limited Warranty

Ignition L.P. warrants this product against defects in materials and workmanship under normal use by the original purchaser for one (1) year after the date of purchase. IGNITION L.P. MAKES NO OTHER EXPRESS WARRANTIES.

This warranty does not cover: (a) damage or failure caused by or attributable to abuse, misuse, failure to follow instructions, improper installation or maintenance, alteration, accident, Acts of God (such as floods or lightning), or excess voltage or current; (b) improper or incorrectly performed repairs by persons who are not a Ignition L.P. Authorized Service Facility; (c) consumables such as fuses or batteries; (d) ordinary wear and tear or cosmetic damage; (e) transportation, shipping or insurance costs; (f) costs of product removal, installation, set-up service, adjustment or reinstallation; and (g) claims by persons other than the original purchaser.

Should a problem occur that is covered by this warranty, take the product and the sales receipt as proof of purchase date to the place of purchase in the U.S. Ignition L.P. will, at its option, unless otherwise provided by law: (a) repair the product without charge for parts and labor; (b) replace the product with the same or a comparable product; or (c) refund the purchase price. All replaced parts and products, and products on which a refund is made, become the property of Ignition L.P. New or reconditioned parts and products may be used in the performance of warranty service. Repaired or replaced parts and products are warranted for the remainder of the original warranty period. You will be charged for repair or replacement of the product made after the expiration of the warranty period.

IGNITION L.P. EXPRESSLY DISCLAIMS ALL WARRANTIES AND CONDITIONS NOT STATED IN THIS LIMITED WARRANTY. ANY IMPLIED WARRANTIES THAT MAY BE IMPOSED BY LAW, INCLUDING THE IMPLIED WARRANTY OF MERCHANTABILITY AND, IF APPLICABLE, THE IMPLIED WARRANTY OF FITNESS FOR A PARTICULAR PURPOSE, SHALL EXPIRE ON THE EXPIRATION OF THE STATED WARRANTY PERIOD.

7



EXCEPT AS DESCRIBED ABOVE, IGNITION L.P. SHALL HAVE NO LIABILITY OR RESPONSIBILITY TO THE PURCHASER OF THE PRODUCT OR ANY OTHER PERSON OR ENTITY WITH RESPECT TO ANY LIABILITY, LOSS OR DAMAGE CAUSED DIRECTLY OR INDIRECTLY BY USE OR PERFORMANCE OF THE PRODUCT OR ARISING OUT OF ANY BREACH OF THIS WARRANTY, INCLUDING, BUT NOT LIMITED TO, ANY DAMAGES RESULTING FROM INCONVENIENCE AND ANY LOSS OF TIME, DATA, PROPERTY, REVENUE, OR PROFIT AND ANY INDIRECT, SPECIAL, INCIDENTAL, OR CONSEQUENTIAL DAMAGES, EVEN IF IGNITION L.P. HAS BEEN ADVISED OF THE POSSIBILITY OF SUCH DAMAGES.

Some States do not allow limitations on how long an implied warranty lasts or the exclusion or limitation of incidental or consequential damages, so the above limitations or exclusions may not apply to you. This warranty gives you specific legal rights, and you may also have other rights which vary from State to State. You may contact Ignition L.P. at:

Ignition L.P., 3102 Maple Ave Suite 450, Dallas, TX 75201
02/09

For product support, call **1-866-315-0426**



Protect the environment by recycling used electronics. Go to E-CyclingCentral.com to find an electronic recycling center near you.

© 2009, Ignition L.P. All rights reserved. Printed 07A09
Gigaware is a trademark used by Ignition L.P. in China 12-495 [A]
AO0315ABA1

8