



2302500
2302501
2302502

Portable Power Bank with Bluetooth® Speaker User's Guide



We hope you enjoy your Portable Power Bank with Bluetooth® Speaker from RadioShack. This power bank works with most Micro USB devices to provide up to 13 hours of talk time, and features an integrated speaker. Please read this user's guide before using your new power bank.

Package Contents

- Portable Power Bank
- USB to Micro USB Cable
- User's Guide

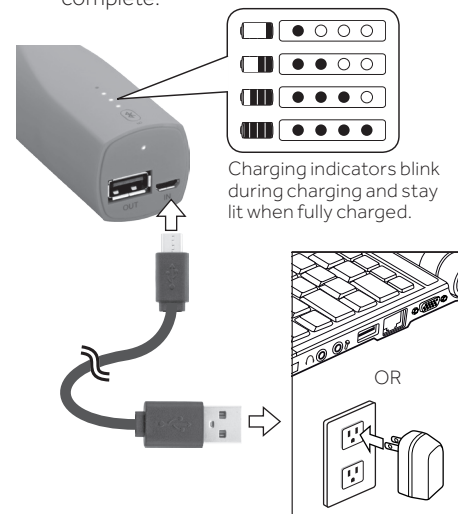
Caution:

- Use only with devices that require 5V USB power.
- The input current for a device plugged into this power bank should not exceed 1 A.
- Do not short-circuit, disassemble, or destroy the power bank.
- Do not expose to water, fire, high temperature, or high humidity.
- Charge only devices with minimum input current 80 mA.

2

Charge the Power Bank

1. Connect the supplied USB cable to the power bank's **IN** port and the USB port on your computer or USB charger.
2. Unplug the power bank when charging is complete.

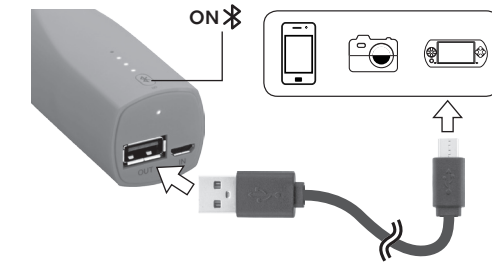


3

Charge Your Device

You can use the provided USB cable or another USB cable that is compatible with your device. Read your device's instructions for charging requirements.

1. Press **ON** and then connect your device to the power bank's **OUT** port.
2. When charging is finished, unplug your device and disconnect the cable from the power bank to prevent self-discharge.



Notes:

- Operational times vary for different devices.
- The power bank will switch off automatically when your device is fully charged or if there is no device connected within 15 seconds.

4

Use the Bluetooth Speaker

1. Press and hold **ON** for 3 seconds to enter pairing mode. The Bluetooth indicator flashes.
2. Activate your device's Bluetooth function (refer to your device's user's guide). When your device locates **RS2302500/01/02**, select it. When paired, the indicator lights steadily.
3. Use your audio device to control playback.
4. Press and hold **ON** for 3 seconds to turn off your power bank after use.

Notes:

- If prompted for a PIN, enter 0000.
- When turned on, the power bank automatically connects to the most recently paired device within 5 seconds. Pair again if connection fails.
- If the most recently paired device is not available, the power bank will search for other devices.

5



Bluetooth Indicator

- The power bank will disconnect from your device if they are too far apart. To reconnect, move the power bank closer to the device within 30 seconds.
- Bluetooth function cannot be used if the battery level of the power bank is too low.

Specifications

Battery Chemistry Lithium-ion rechargeable
USB Input 5V DC, 1 A
USB Output 5V DC, 1.5 A
Cell Capacity 14.8 Wh (4 Ah)
Battery Charging Time (at 1000mA) 5 hours
Talk Time Up to 13 hours
Operating Temperature 32–104°F (0–40°C)
Speaker	
Output Power 2 W
Frequency Response 200–20 kHz
Rated Impedance 4 Ω
Sensitivity 83 dB

Specifications are subject to change and improvement without notice. Actual product may vary from the images found in this document.

6

FCC Information

This equipment has been tested and found to comply with the limits for a Class B digital device, pursuant to Part 15 of the FCC Rules. These limits are designed to provide reasonable protection against harmful interference in a residential installation. This equipment generates, uses, and can radiate radio frequency energy and, if not installed and used in accordance with the instructions, may cause harmful interference to radio communications. However, there is no guarantee that interference will not occur in a particular installation. If this equipment does cause harmful interference to radio or television reception, which can be determined by turning the equipment off and on, the user is encouraged to try to correct the interference by one or more of the following measures:

- Reorient or relocate the receiving antenna.
- Increase the separation between the equipment and receiver.
- Connect the equipment into an outlet on a circuit different from that to which the receiver is connected.
- Consult your local RadioShack store or an experienced radio/TV technician for help.

Changes or modifications not expressly approved by the party responsible for compliance could void the user's authority to operate the equipment. This device complies with Part 15 of the FCC Rules. Operation is subject to the following two conditions: (1) this device may not cause harmful interference, and (2) this device must accept any interference received, including interference that may cause undesired operation.

7

Limited Warranty

RadioShack warrants this product against defects in materials and workmanship under normal use by the original purchaser for **ninety (90) days** after the date of purchase from a RadioShack-owned store or an authorized RadioShack franchisee or dealer. **RADIOSHACK MAKES NO OTHER EXPRESS WARRANTIES.**

This warranty does not cover: (a) damage or failure caused by or attributable to abuse, misuse, failure to follow instructions, improper installation or maintenance, alteration, accident, Acts of God (such as floods or lightning), or excess voltage or current; (b) improper or incorrectly performed repairs by persons who are not a RadioShack Authorized Service Facility; (c) consumables such as fuses or batteries; (d) ordinary wear and tear or cosmetic damage; (e) transportation, shipping or insurance costs; (f) costs of product removal, installation, set-up service, adjustment or reinstallation; and (g) claims by persons other than the original purchaser. Should a problem occur that is covered by this warranty, take the product and the RadioShack sales receipt as proof of purchase date to any RadioShack store in the U.S. RadioShack will, at its option, unless otherwise provided by law (a) replace the product with the same or a comparable product, or (b) refund the purchase price. All replaced products, and products on which a refund is made, become the property of RadioShack. **RADIOSHACK EXPRESSLY DISCLAIMS ALL WARRANTIES AND CONDITIONS NOT STATED IN THIS LIMITED WARRANTY. ANY IMPLIED WARRANTIES THAT MAY BE IMPOSED BY LAW, INCLUDING THE**

8

IMPLIED WARRANTY OF MERCHANTABILITY AND, IF APPLICABLE, THE IMPLIED WARRANTY OF FITNESS FOR A PARTICULAR PURPOSE, SHALL EXPIRE ON THE EXPIRATION OF THE STATED WARRANTY PERIOD. EXCEPT AS DESCRIBED ABOVE, RADIOSHACK SHALL HAVE NO LIABILITY OR RESPONSIBILITY TO THE PURCHASER OF THE PRODUCT OR ANY OTHER PERSON OR ENTITY WITH RESPECT TO ANY LIABILITY, LOSS OR DAMAGE CAUSED DIRECTLY OR INDIRECTLY BY USE OR PERFORMANCE OF THE PRODUCT OR ARISING OUT OF ANY BREACH OF THIS WARRANTY, INCLUDING, BUT NOT LIMITED TO, ANY DAMAGES RESULTING FROM INCONVENIENCE AND ANY LOSS OF TIME, DATA, PROPERTY, REVENUE, OR PROFIT AND ANY INDIRECT, SPECIAL, INCIDENTAL, OR CONSEQUENTIAL DAMAGES, EVEN IF RADIOSHACK HAS BEEN ADVISED OF THE POSSIBILITY OF SUCH DAMAGES. Some states do not allow limitations on how long an implied warranty lasts or the exclusion or limitation of incidental or consequential damages, so the above limitations or exclusions may not apply to you. This warranty gives you specific legal rights, and you may also have other rights which vary from state to state. You may contact RadioShack at:
RadioShack Customer Relations
300 RadioShack Circle
Fort Worth, TX 76102
02/14
www.RadioShack.com

9

RoHS Complies with the European Union's "Restriction of Hazardous Substances Directive," which protects the environment by restricting specific hazardous materials and products.

The Bluetooth® word mark and logos are owned by Bluetooth SIG, Inc. and any use of such marks by RadioShack Corporation is under license.



©2014 RadioShack Corporation. All rights reserved. RadioShack is a registered trademark used by RadioShack Corporation.

10

Printed 2302500
in China 2302501
12A14 2302502