

## Voice-Activated Wireless Intercoms



Thank you for purchasing your Voice-Activated Wireless Intercoms from **RadioShack**. Please read this user's guide before installing, setting up, and using your new intercoms.

### Package Contents

- Wireless Intercom (2)
- AC Adapter (2)
- User's Guide

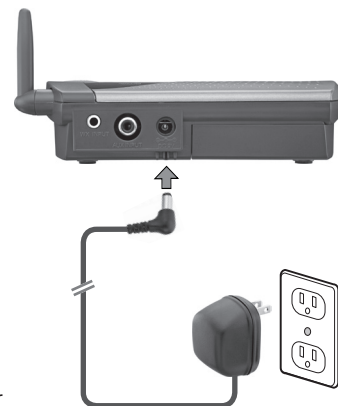
### Features

- Selectable VOX mode for hands-free communication.
- Lockable talk button turns an intercom into a baby monitor.
- Expandable by purchasing additional intercoms.
- Can transmit up to 200 feet line of sight.

### 1 Power Your Intercoms (two options)

#### AC power:

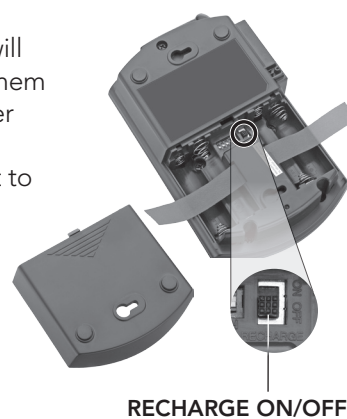
Using the supplied AC adapter, connect the intercom's **DC 9V** jack to a wall outlet.



#### Battery power:

1. Slide to open the battery compartment cover.
2. Set the **RECHARGE ON/OFF** switch in the compartment to **ON** for rechargeable batteries or **OFF** for alkaline batteries.

If you use rechargeable batteries, the intercom will automatically recharge them whenever the AC adapter is plugged in and the **RECHARGE** switch is set to **ON**.



3. Insert four AA batteries (not included) matching the polarity symbols (+ and -) marked inside the battery compartment.

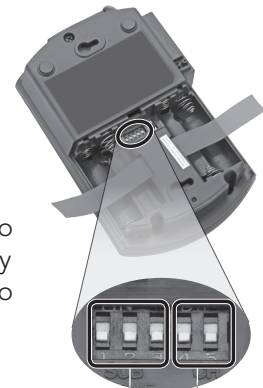
**Warning:** Never install alkaline batteries with the **RECHARGE** switch set to **ON**. Alkaline batteries can get hot or explode if you try to recharge them.

#### Battery Notes:

- We recommend AA 1.2V/2500mAh NiMH rechargeable batteries, available from **RadioShack**.
- Dispose of batteries promptly and properly. Do not burn or bury them.
- Use only fresh batteries of the required size and type.
- Do not mix old and new batteries, different types of batteries (standard, alkaline, or rechargeable), or rechargeable batteries of different capacities.
- If you do not plan to use the intercoms for a long time, remove the batteries. Batteries can leak chemicals that can damage electronic parts.

### 2 Set the Channel and Sub Tone

To change channel and sub tone settings, use a pointed object to set the **SUB TONE** and **CH** switches inside the battery compartment.



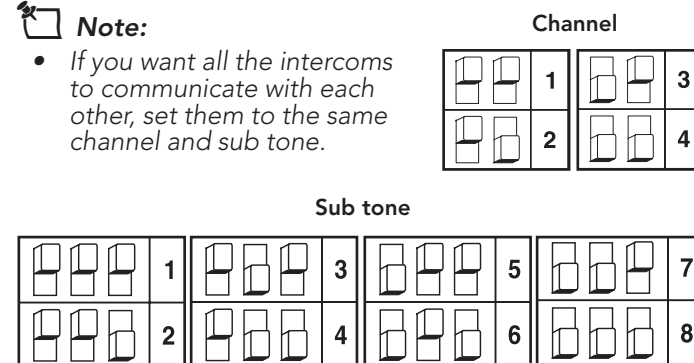
Your intercoms have four channels to set the radio frequencies used to communicate with each other. They also have eight sub tone settings to help eliminate interference.

Your intercoms must be set to the same channel and sub tone for them to communicate with each other.

1. Set each intercom to channel 1, 2, 3, or 4 as shown.
2. Set each intercom to sub tone 1-8 as shown.

#### Note:

- If you want all the intercoms to communicate with each other, set them to the same channel and sub tone.



- If you want one intercom to communicate only with one other intercom, set only those two intercoms to the same channel and sub tone.
- If you receive occasional interference falsely triggering your intercom, you can set each intercom to a different sub tone. However, if there is frequent interference that affects the conversation or audio quality, set your intercoms to a different channel.

### 3 Use Your Intercoms

To turn on an intercom, rotate **VOLUME** to the maximum volume direction until it clicks. Then adjust **VOLUME** to a comfortable listening level.

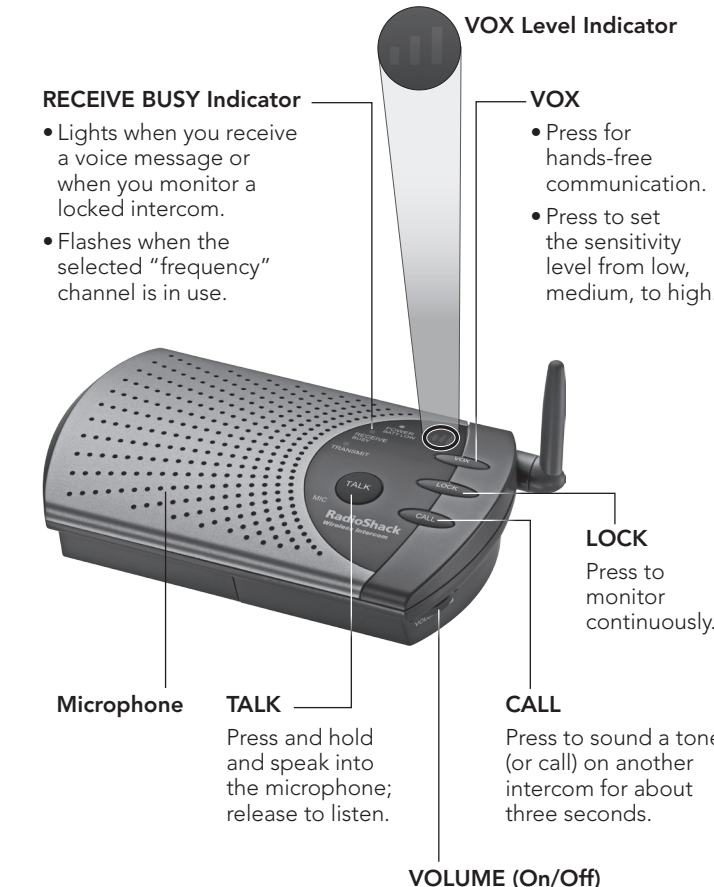
#### Call another intercom:

1. Press **CALL** once. The **TRANSMIT** indicator lights. Each intercom that is turned on and set to the same channel and sub tone beeps for about three seconds.
2. Press and hold **TALK** and speak in a normal voice after you hear the beep. When you finish speaking, release **TALK** and listen for the response.

#### Monitor an intercom:

You can set any intercom so it continuously transmits sounds from the area where it is located to another intercom. You can only monitor one intercom at a time.

1. Press **LOCK** on the intercom in the area you want to monitor. The **TRANSMIT** indicator flashes.
2. When you finish monitoring, release the lock by pressing **TALK** on the intercom in the area you are monitoring. **TRANSMIT** turns off.



#### RECEIVE BUSY Indicator

- Lights when you receive a voice message or when you monitor a locked intercom.
- Flashes when the selected "frequency" channel is in use.

#### VOX

- Press for hands-free communication.
- Press to set the sensitivity level from low, medium, to high.

#### LOCK

Press to monitor continuously.

#### CALL

Press to sound a tone (or call) on another intercom for about three seconds.

#### VOLUME (On/Off)



After pressing **LOCK** on an intercom, you cannot call or talk to that intercom until you press **TALK** to release the lock.

#### ④ Use VOX

Use VOX for hands-free communication.

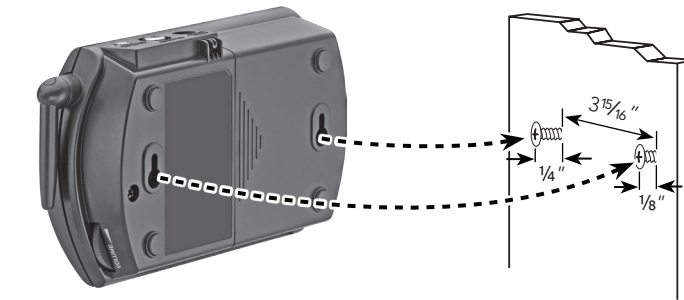
1. Press **VOX**. The VOX level indicator lights.
2. Repeatedly press **VOX** to set the sensitivity level from low, medium, to high.

#### Note:

- The VOX function turns off when the VOX level indicator turns off.
- In VOX mode, there is a short delay between when you start talking and intercom transmission.

### Mounting Your Intercoms

You can place the intercoms on flat surfaces, or mount them on walls. To mount the intercoms, you need two screws (not supplied) for each intercom, with heads that fit into the keyhole slots on the back of the intercom.



7

1. Drill two holes  $3\frac{15}{16}$  inch (100 mm) apart at the same level.
2. Thread the screws into the holes, letting the left screw's head extend about  $\frac{1}{4}$  inch (6.5 mm) from the wall and the right screw's head about  $\frac{1}{8}$  inch (3.5 mm) from the wall.
3. Align the intercom's keyhole slots with the screws and slide the intercom down to secure it.
4. Rotate the antenna so it points upwards.

**Note:** Be sure you install the intercoms at least 10 feet away from each other, to avoid feedback from the speakers.

### Connecting an Audio Source

To transmit audio to each intercom, use an audio cable with a standard RCA connector (not supplied) to connect the **AUX INPUT** jack of the intercom to the output jack of an audio source (not included).

- Each intercom can broadcast from a connected audio source only when the channel to which it is set to is not being used to transmit voice from one intercom to another.
- You can only broadcast from one intercom at a time.
- Adjusting **VOLUME** on the intercoms does not change the intercom's input sensitivity.

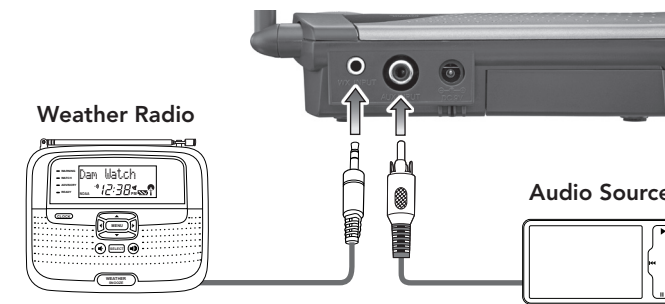
### Connecting a Weather Radio

To transmit weather alerts to each intercom, connect the **WX INPUT** jack of an intercom to your weather radio's

8

alert out jack. Follow the instructions in the owner's manual for your weather radio to create a weather alert.

- If you use the AUX broadcasting feature and the weather radio input at the same time, you MUST connect the weather radio alarm's output to the unit that is transmitting the AUX input audio. Do not connect the weather radio inputs to a unit that is receiving the broadcast.
- Always connect the weather radio's alarm output to the intercom you most frequently use to broadcast.
- If you connect an intercom to both a weather radio and another audio source and both sources are active, the intercom always sounds the weather alert first.
- The intercom's weather alarm will only shut off after the weather radio alerts expire or after you manually stop the weather radio alert. To avoid disturbing neighbors or pets if you are away from the weather radio, turn off the intercom or lower the volume before leaving.



9



### Specifications

Channel Selectivity $\pm$ 500KHz.....	50 dB
Squelch Threshold.....	20 dB SINAD
S/N at 1mV input, $\pm$ 38KHz deviation (A-weight) (@ROP).....	50 dB
10% THD Output Power.....	500 mW
RX Current Drain at Reference Output.....	140 mA
MIC Input Sensitivity (@38 kHz Deviation).....	3 mV
AUX Input Sensitivity (@38 kHz Deviation).....	90 mV
Sub tone Deviation.....	10 KHz
Call Tone Deviation.....	35 KHz
Alert Tone Deviation.....	35 KHz
TX Current Drain.....	65 mA
Battery Low Indication.....	4.2 V
Minimum Operation Voltage (Battery).....	3.8 V
Operation Range (line of sight).....	200 feet
Overall Frequency Response (-3 dB Bandwidth).....	400 - 7kHz
Current Drain at Standby Mode.....	24 mA
AUX VOX Sensitivity.....	25 mV
Mic VOX Sensitivity.....	2 mV
Weather Alarm Input Sensitivity (load current).....	1mA

Specifications are subject to change and improvement without notice. Actual product may vary from the images found in this document.

### FCC Information

This equipment has been tested and found to comply with the limits for a Class B digital device, pursuant to Part 15 of the FCC Rules. These limits are designed to provide reasonable protection against harmful interference in a residential installation. This equipment generates, uses, and can radiate radio frequency energy and, if not installed and used in accordance with the instructions, may cause harmful interfer-

10

ence to radio communications. However, there is no guarantee that interference will not occur in a particular installation. If this equipment does cause harmful interference to radio or television reception, which can be determined by turning the equipment off and on, the user is encouraged to try to correct the interference by one or more of the following measures:

- Reorient or relocate the receiving antenna.
- Increase the separation between the equipment and receiver.
- Connect the equipment into an outlet on a circuit different from that to which the receiver is connected.
- Consult the dealer or an experienced radio/TV technician for help.

If you cannot eliminate the interference, the FCC requires that you stop using your equipment. Changes or modifications not expressly approved by the party responsible for compliance could void the user's authority to operate the equipment.

This device complies with Part 15 of the FCC rules. Operation is subject to the following two conditions: (1) This device may not cause harmful interference, and (2) this device must accept any interference received, including interference that may cause undesired operation.

### Limited Warranty

**RadioShack** warrants this product against defects in materials and workmanship under normal use by the original purchaser for **ninety (90) days** after the date of purchase from a **RadioShack**-owned store or an authorized **RadioShack** franchisee or dealer. **RADIOSHACK** MAKES NO OTHER EXPRESS WARRANTIES.

This warranty does not cover: (a) damage or failure caused by or attributable to abuse, misuse, failure to follow instructions, improper installation or maintenance, alteration, accident, Acts of God (such as floods or lightning), or excess voltage or current; (b) improper or incorrectly performed repairs by persons who are not a **RadioShack** Authorized Service Facility; (c) consumables such as fuses or batteries; (d) ordinary wear and tear or cosmetic damage; (e) transportation, shipping or insurance costs; (f) costs of product removal, installation, set-up service, adjustment or reinstallation; and (g) claims by persons other than the original purchaser.

Should a problem occur that is covered by this warranty, take the product and the **RadioShack** sales receipt as proof of purchase date to any **RadioShack** store in the U.S. **RadioShack** will, at its option, unless otherwise provided by law: (a) repair the product without charge for

11



parts and labor; (b) replace the product with the same or a comparable product; or (c) refund the purchase price. All replaced parts and products, and products on which a refund is made, become the property of **RadioShack**. New or reconditioned parts and products may be used in the performance of warranty service. Repaired or replaced parts and products are warranted for the remainder of the original warranty period. You will be charged for repair or replacement of the product made after the expiration of the warranty period.

**RADIOSHACK** EXPRESSLY DISCLAIMS ALL WARRANTIES AND CONDITIONS NOT STATED IN THIS LIMITED WARRANTY. ANY IMPLIED WARRANTIES THAT MAY BE IMPOSED BY LAW, INCLUDING THE IMPLIED WARRANTY OF MERCHANTABILITY AND, IF APPLICABLE, THE IMPLIED WARRANTY OF FITNESS FOR A PARTICULAR PURPOSE, SHALL EXPIRE ON THE EXPIRATION OF THE STATED WARRANTY PERIOD.

EXCEPT AS DESCRIBED ABOVE, **RADIOSHACK** SHALL HAVE NO LIABILITY OR RESPONSIBILITY TO THE PURCHASER OF THE PRODUCT OR ANY OTHER PERSON OR ENTITY WITH RESPECT TO ANY LIABILITY, LOSS OR DAMAGE CAUSED DIRECTLY OR INDIRECTLY BY USE OR PERFORMANCE OF THE PRODUCT OR ARISING OUT OF ANY BREACH OF THIS WARRANTY, INCLUDING, BUT NOT LIMITED TO, ANY DAMAGES RESULTING FROM INCONVENIENCE AND ANY LOSS OF TIME, DATA, PROPERTY, REVENUE, OR PROFIT AND ANY INDIRECT, SPECIAL, INCIDENTAL, OR CONSEQUENTIAL DAMAGES, EVEN IF **RADIOSHACK** HAS BEEN ADVISED OF THE POSSIBILITY OF SUCH DAMAGES.

Some states do not allow limitations on how long an implied warranty lasts or the exclusion or limitation of incidental or consequential damages, so the above limitations or exclusions may not apply to you. This warranty gives you specific legal rights, and you may also have other rights which vary from state to state. You may contact **RadioShack** at:

RadioShack Customer Relations,  
300 RadioShack Circle, Fort Worth, TX 76102 04/08

[www.RadioShack.com](http://www.RadioShack.com)

©2013. **RadioShack** Corporation.  
All rights reserved. **RadioShack** is a  
trademark used by **RadioShack** Corporation.

Printed 03C13  
in China 4300124

12