



Quick Start Guide

FieldSentinel 825/1825



IMPORTANT

⚠ WARNING *Read all the safety information below before using the product.*

CAUTION *FieldSentinel is not a medical device and should not be used as a substitute for professional medical judgment. It is not designed or intended for use in the diagnosis of disease or other conditions, or in the cure, mitigation, treatment, or prevention of any condition or disease. Please consult your veterinarian prior to making any decisions related to your dog's health.*

Always consider your dog's health! DO NOT exercise your dog to the point of exhaustion.

- *This product is intended to be used only for recreational purposes and not for medical purposes, and is not intended to diagnose, monitor, treat, cure, or prevent any disease or condition.*
- *The heart rate, heart rate variability, and other readings are for reference only, and no responsibility is accepted for the consequences of any erroneous readings.*
- *NOTICE: Avoid contact with spray cleaners & Deet as they could damage the product's plastics.*

To avoid serious risk or injury to your dog, it is important you complete the following steps in order before you begin using this system.

WELCOME

Thank you for choosing the SportDOG® Brand FieldSentinel. With proper use, this system will help you train your dog efficiently and safely.

The Quick Start Guide will get you and your dog started with this remote training system. For the best experience, review this guide thoroughly.

For more detailed information, we recommend reading the complete manual online. You can easily access it with the QR code provided. **It will include information on Collar stim ranges; pairing your Collar to the Handheld, etc.**

QR

WHAT'S IN THE BOX?



HOW IT WORKS

In addition to being a fully functional training e-collar, this system also monitors your dog's health.

The Collar's built-in sensor will detect your dog's vitals and the Handheld will alert you when there has been a serious change.

This will allow you to know how your dog is doing, even if he is not within eyesight, and quickly address any potentially dangerous health situations.

HEALTH SENSORS



STEP 1: CHARGE THE HANDHELD & COLLAR

1. Connect the magnetic charger to the back of the Handheld by aligning the two and letting it snap into place. The Handheld takes 2 hours to fully charge.



2. Snap the charging clip on the Collar by aligning the brass contacts on the clip to the connection points on the Collar and matching up the SportDOG® logos. The Collar takes 4 hours to charge.



3. Connect each of the USB ends on the charging cables to the wall adapter and plug into a standard wall outlet. The Collar and Handheld Indicator Lights will be solid green while charging and flash green when fully charged.



Approximate battery life between charges is 16 hours for both the Collar and Handheld, depending on frequency of use. Power off the Collar and Handheld between uses to maximize battery life.

HANDHELD: To power the Handheld ON or OFF, press and hold the power button (found on top) until it beeps.

COLLAR: To power the Collar ON, press and release the power button (between the probes). The Collar will beep, and the Indicator Light will flash red or green depending on battery status. The health sensor lights will glow steady green.

To power OFF, press and hold the button until the Collar beeps and light is red.

STEP 2: GET TO KNOW THE HANDHELD & COLLAR

INDICATOR LIGHT

Indicates battery status (slow blink) or lights accordingly when button pressed.

TOGGLE SWITCH

Allows for quickly switching between Dog 1 and Dog 2.

SIDE BUTTON*

1-7 on Dial: Tone
V/T on Dial: Vibe

UPPER BUTTON*

1-7 on Dial:
Continuous Stim
V/T on Dial: Vibe

LOWER BUTTON*

1-7 on Dial:
Momentary (nick) Stim
V/T on Dial: Vibe

ALERT LED

Begins flashing when your dog's composite health score reaches its threshold (for more info see page x).
Red - DOG 1; will flash Blue when powering on.

POWER BUTTON

Powers the Handheld ON or OFF by pressing and holding until it tones.

INTENSITY DIAL

Adjusts the intensity level of static stimulation or sets the collar function to Vibe or Tone.

MUD PLUG

On the back of the Handheld. Important to keep this sealed.

**Your Handheld is programmed to Mode 1 (toggle up). If you wish to change the button settings, see full online manual.*

PROBES/ CONTACT POINTS

Administer the stimulation to your dog. These are not interchangeable.

HEALTH SENSORS

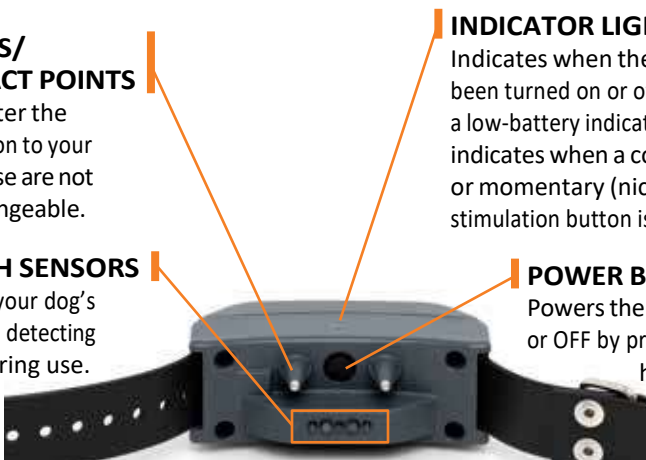
Monitor your dog's health by detecting vitals during use.

INDICATOR LIGHT

Indicates when the Collar has been turned on or off, serves as a low-battery indicator, and also indicates when a continuous or momentary (nick) static stimulation button is pressed.

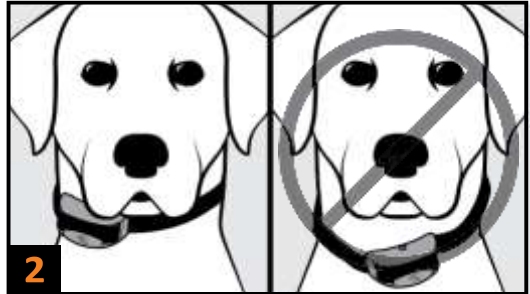
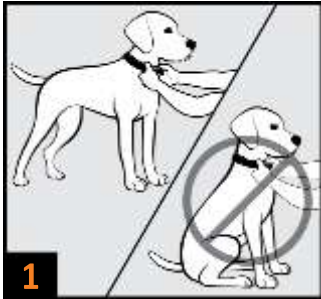
POWER BUTTON

Powers the Collar ON or OFF by pressing and holding until it tones.



STEP 3: FIT THE COLLAR ON YOUR DOG

Proper fit and placement of the Collar is imperative for effective training and use.



1. Your dog should be standing comfortably while fitting the collar.
2. Position the collar as high as possible on your dog's neck and slightly to either side, not directly centered. Buckle the collar so that it fits snugly.



3. You should only be able to fit one finger between the strap and your dog's neck. This will help ensure the health sensor and the contact points are both touching your dog's skin. If your dog has a long or thick coat, trim the hair around the contact points to ensure contact with the skin.

Dogs tend to tense up while fitting the collar for the first time. Check the fit again after your dog becomes more comfortable wearing it and adjust as necessary.

NOTE: If using an additional Collar (such as GPS), it should go farther down on the dog's neck.

STEP 4: LET THE COLLAR GET TO KNOW YOUR DOG



Once the collar is fit on your dog and powered on, it needs up to **5 MINUTES** to calibrate to your dog and start tracking vitals allowing your hunt/training session to start with a valid heart rate. Do not remove the collar or turn it off during this time.

Every time you put the collar on your dog, it is important to make sure you wait 5 minutes for the collar to calibrate before use. Also, keep the health monitor sensors are clean by using soap, warm water, and a microfiber cloth.

Do not leave the collar on your dog longer than 12 hours. Remove the collar from your dog while traveling or while in his kennel.

During this 5 minutes, there should be minimal motion of your dog. The system will do X when ready to be used and collecting health information.

STEP 5: FIND YOUR DOG'S RECOGNITION LEVEL

For effective training, it is important to find the best level of static stimulation for your dog.

RECOGNITION LEVEL: The lowest level of static stimulation at which your dog acknowledges feeling the stimulation through a reaction. This reaction can be flicking his ears, looking around in curiosity, or standing up from a sitting or lying position.

Important: Your dog should not vocalize or panic when receiving static stimulation.

Always start at the lowest level and slowly increase as needed. Every dog is different, and their recognition level is not correlated to size or breed. Therefore, it is important to watch closely for any slight changes in behavior that demonstrates your dog is feeling the static stimulation.

STEP 5: FINDING YOUR DOG'S RECOGNITION LEVEL (CONT.)

1. Starting with the collar powered on and properly fitted on your dog, set the Handheld dial to Level 1. Power your Handheld on by pressing the button as shown.



2. While watching your dog, press the Upper Button for 1 to 2 seconds. Look for any indication that your dog feels the static stimulation.



3. If your dog shows no reaction, increase the Intensity Dial to Level 2 and repeat this process until you find your dog's Recognition Level. This is the level you should use when you begin a training exercise.



4. If you have progressed to the highest level on the dial (7) while searching for your dog's Recognition Level and your dog continues to show no response, check to make sure the fit of the Collar is snug against your dog's neck. Then go back to Level 1 and repeat the process. If your dog still does not indicate he is feeling the static stimulation, you may need to trim the hair beneath the Contact Points or contact Customer Care.



HEALTH SENSOR ALERTS

If the Collar detects a significant, potentially dangerous change in your dog's vitals, your Handheld will alert you by flashing a light at the base of the antenna as well as emitting a tone and vibration.



To silence the alert, quickly press and release the power button on the Handheld. The tone and vibration will stop, but the Alert LED will continue to flash until your dog's vitals return to normal. If you accidentally turn off the Handheld, simply turn back on. You will not need to wait the 5-minute initializing period.



We recommend if your Handheld alerts you, you go to your dog to assist them (e.g. put eyes on your dog and observe them, take a break, give your dog water). You may also consider loosening the collar and then fitting properly when vitals return to normal.



To access more information about heat-related illnesses, refer to the adjacent QR code for tips on what to do if you notice your dog exhibiting certain signs.

A black square containing an orange horizontal bar with the white text 'QR' centered within it.

QR

CHANGING THE ALERT THRESHOLD

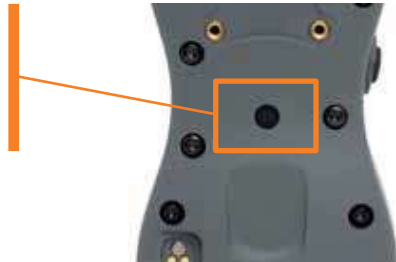
If you find the Handheld is alerting you frequently when your dog's condition seems normal, you can adjust the sensitivity of the alert by following the steps below:

The alert threshold is set to 2. You can lower to 1 or increase to 3 depending if the sensitivity is too high or low.

1. Begin with the toggle switch down and the intensity dial set to V/T



2. Press the mode button on the back of the Handheld with the tip of a pen. The Indicator Light will be solid green.



3. Turn the Intensity Dial to your desired threshold (1, 2, or 3).



4. Press the left side button on your Handheld to set.



SKU numbers: FS-825, FS-1825, FS-AD

Collar - FCC ID: KE3-3003444

IC: 2721A-3003444

Handheld - FCC ID: KE3-30034451

IC:2721A-30034451

Contains: FCC ID: QOQ-GM240S, IC: 5123A-GM240S

This equipment complies with FCC and RSS-102 radiation exposure limits set forth for an uncontrolled environment and meets the FCC and RSS-102 radio frequency (RF) Exposure Guidelines. This equipment should be installed and operated keeping the radiator at least 20 cm or more away from person's body.

Cet équipement est conforme aux limites d'exposition aux rayonnements de la FCC et RSS-102 établies pour un environnement non contrôlé et respecte les directives d'exposition aux radiofréquences (RF) de la FCC et RSS-102. Lors de l'installation ou de l'utilisation de cet équipement, tenez-vous à plus de 20 cm de distance du radiateur.

FCC

This device complies with part 15 of the FCC Rules. Operation is subject to the following two conditions: (1) This device may not cause harmful interference, and (2) this device must accept any interference received, including interference that may cause undesired operation.

NOTE: This equipment has been tested and found to comply with the limits for a Class B digital device, pursuant to part 15 of the FCC Rules. These limits are designed to provide reasonable protection against harmful interference in a residential installation. This equipment generates, uses, and can radiate radio frequency energy and, if not installed and used in accordance with the instructions, may cause harmful

interference to radio communications. However, there is no guarantee that interference will not occur in a specific installation. If interference does occur to radio or television reception, which can be determined by turning the equipment off and on, the user is encouraged to try to correct the interference by one or more of the following measures:

- Reorient or relocate the receiving antenna.
- Increase the separation between the equipment and the receiver.
- Connect the equipment to an outlet on a circuit different from that to which the receiver is connected.
- Consult customer care, the dealer, or an experienced radio/TV technician for help.

CAUTION: Modification or changes to this equipment not expressly approved by Radio Systems Corporation may void the user's authority to operate the equipment.

IC

This device complies with Industry Canada licence-exempt RSS standard(s). Operation is subject to the following two conditions: (1) this device may not cause interference, and (2) this device must accept any interference, including interference that may cause the undesired operation thereof.

Le présent appareil est conforme aux CNR d'Industrie Canada applicables aux appareils radio exempts de licence. L'exploitation est autorisée aux deux conditions suivantes : (1) l'appareil ne doit pas produire de brouillage, et (2) l'utilisateur de l'appareil doit accepter tout brouillage radioélectrique subi, même si le brouillage est susceptible d'en compromettre le fonctionnement.



support.sportdog.com

©2023 RADIO SYSTEMS CORPORATION
Radio Systems Corporation • 10427 PetSafe Way • Knoxville, TN 37932 • 1.800.732.0144

400-2555