

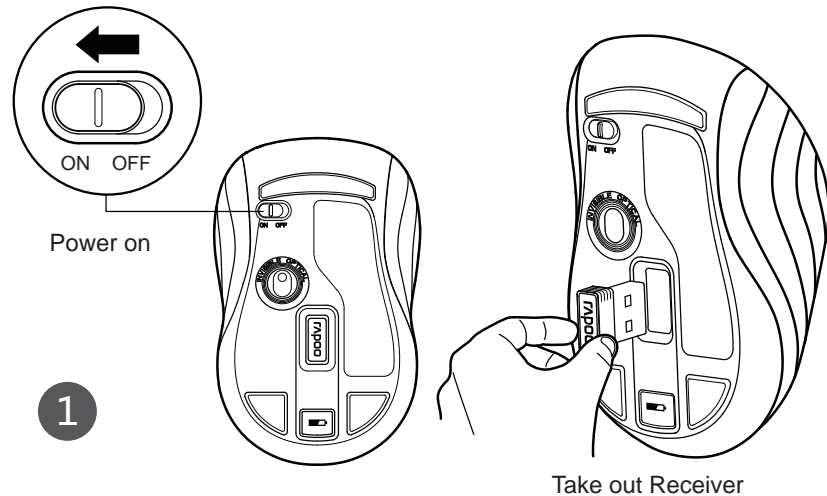
# 3000P

## Wireless Optical Mouse 雷柏無線光學滑鼠

### Quick Start Guide (V1.0)

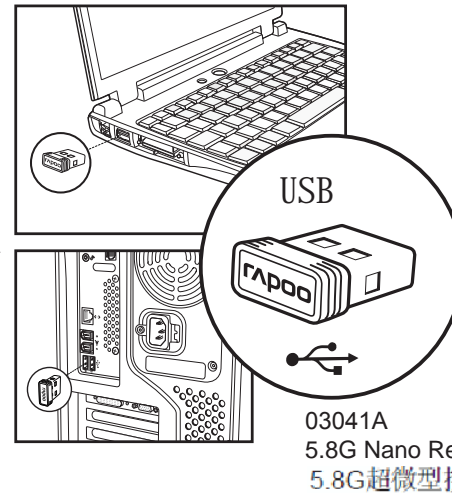
The ultimate Wireless

# RAPOO 雷柏

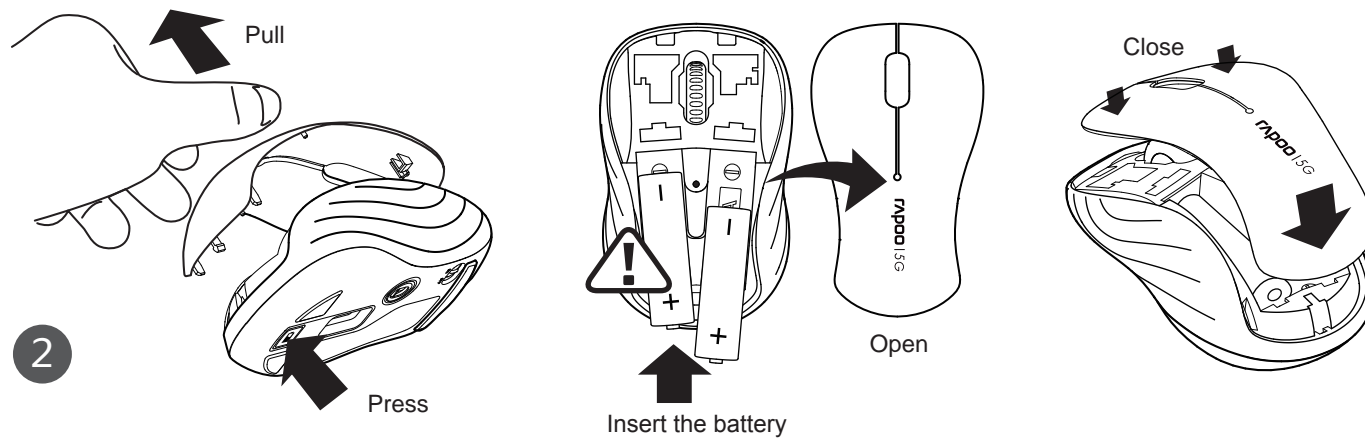


5.8G Nano Receiver user guide

1. Plug the Nano Receiver into a USB port of your computer.
2. Turn on the Wireless Optical Mouse.
3. Move the Wireless Optical Mouse to get connected with the Nano Receiver.



03041A  
5.8G Nano Receiver  
5.8G超微型接收器



#### FCC Statement

This equipment has been tested and found to comply with the limits for a Class B digital device, pursuant to part 15 of the FCC rules. These limits are designed to provide reasonable protection against harmful interference in a residential installation. This equipment generates, uses and can radiate radio frequency energy and, if not installed and used in accordance with the instructions, may cause harmful interference to radio communications. However, there is no guarantee that interference will not occur in a particular installation. If this equipment does cause harmful interference

to radio or television reception, which can be determined by turning the equipment off and on, the user is encouraged to try to correct the interference by one or more of the following measures:

- Reorient or relocate the receiving antenna.
- Increase the separation between the equipment and receiver.
- Connect the equipment into an outlet on a circuit different from that to which the receiver is connected.
- Consult the dealer or an experienced radio/TV technician for help.

To assure continued compliance, any changes or modifications not expressly approved by the party responsible for compliance could void the user's authority to operate this equipment. (Example- use only shielded interface cables when connecting to computer or peripheral devices).

This equipment complies with Part 15 of FCC RF Rules. Operation is subject to the following two conditions:

- 1) This device may not cause interference and
- 2) This device must accept any interference, including interference that may cause undesired operation of the device.

#### Caution!

The manufacturer is not responsible for any radio or TV interference caused by unauthorized modifications to this equipment. Such modifications could void the user authority to operate the equipment.

#### NCC 警告語

根據交通部低功率管理辦法規定：

第十二條

經型式認證合格之低功率射頻電機，非經許可，公司、商號或使用者均不得擅自變更頻率、加大功率或變更設計之特性及功能。

第十四條

低功率射頻電機之使用不得影響飛航安全及干擾合法通信；經發現有干擾現象時，應立即停用，並改善至無干擾時方得繼續使用。

前項合法通信，指依電信規定作業之無線電信。低功率射頻電機須忍受合法通信或工業、科學及醫療用電波輻射性電機設備之干擾。

#### Declaration of Conformity

Hereby, ShenZhen Rapoo Technology Co., Ltd, declares that this device is in compliance with the essential requirements and other relevant provisions of Directive 1999/5/EC.

#### Canada Statement

This device complies with Industry Canada licence-exempt RSS standard(s). Operation is subject to the following two conditions: (1) this device may not cause interference, and (2) this device must accept any interference, including interference that may cause undesired operation of the device.

Le présent appareil est conforme aux CNR d'Industrie Canada applicables aux appareils radio exempts de licence. L'exploitation est autorisée aux deux conditions suivantes : (1) l'appareil ne doit pas produire de brouillage, et (2) l'utilisateur de l'appareil doit accepter tout brouillage radioélectrique subi, même si le brouillage est susceptible d'en compromettre le fonctionnement.

保修期限	日期	維修情況
購買日期		
購買地點		
產品序列號		
商品編號		
蓋章		

备注：請將各表填寫清楚，請勿擅自塗改，並妥善保管好本保修服務卡，以維護您的合法權益。如需服務或有任何疑問，請諮詢當地經銷商或與我們聯繫。



R3A215  
M/N:  
Rating:  
Approval No:  
CMHT ID:



M/N:  
Rating:  
Approval No:  
CMHT ID:



#### 补偿

在保質期內，您享有以下售後權利：(1) 7天內出現質量問題，根據國家“三包”規定於產品外觀與包裝完整的情況下，將產品退還給購買地點或雷柏指定地點，憑購買的有效憑證，退回您所支付的硬件產品貨款。(2) 60天內出現產品質量問題，您可以到購買地點或雷柏指定地點更換硬件產品，或者到雷柏指定的維修網點維修。更換之後的硬件保質期為原保質期的剩餘天數。(3) 1年內出現產品質量問題，您可以到雷柏指定的維修網點維修。(4) 凡購買N系列產品的客戶，1年內產品出現質量問題，您可以到雷柏經銷商處更換新品。

#### 質保限制

本有限質保不涵蓋由於以下原因導致之問題或損壞：(1) 意外事件、誤用、操作不當或任何未獲授權的維修、改裝或者拆卸；(2) 操作或維護不當，適用過程中違反產品說明或連接至不適當的電壓源；或者(3) 適用非由雷柏提供的消耗品(如備用電池)，但適用法律禁止此類限制的情況除外。

Country (or area)	Information	Description
Hongkong	Company name Address Tel#	Vim Yield Company 香港九龍官塘成業街20號怡生工業大廈2字樓全層 852-31522789
Malaysia	Company name Address Tel#	AV FUTURE LINK SDN BHD NO 23A, JALAN 5/152, TAMAN PERINDUSTRIAN OUG, PUCHONG, 58200 KUALA LUMPUR, MALAYSIA (+0060)377830011
Việt Nam	Tên công ty địa chỉ điện thoại	CÔNG TY CỔ PHẦN KỸ THUẬT CÔNG NGHỆ NAM THÀNH Số 7, lô 14A, khu đô thị mới Trung Yên, đường Trung Hòa, quận Cầu Giấy, Hà Nội, Việt Nam 0084-4-37834530
臺灣	公司名稱 地址 電話	連銘電子有限公司 新北市汐止區新台五路一段79號13樓 (+886) 2 2898 1965
中國大陸	公司名稱 地址 電話	深圳雷柏電子有限公司 深圳市福田中心區益田路4068號卓越時代廣場41層 (+86) 755-23995550

產品中有毒有害物質或元素的名稱及含量  
根據中國《電子信息產品污染控制管理辦法》

鼠标						
有毒有害物質或元素						
部件名稱	鉛 (Pb)	汞 (Hg)	鎘 (Cd)	六價鉻 (Cr (VI))	多溴聯苯 (PBB)	多溴二苯醚 (PBDE)
電纜Cable	○	○	○	○	○	○
電路板組件PWAs	○	○	○	○	○	○
塑料部件Plastic parts	○	○	○	○	○	○
金屬部件Metal parts	○	○	○	○	○	○
橡膠部件Rubber parts	○	○	○	○	○	○

○=表示該有毒有害物質在該部件所有均質材料中的含量均在SJ/T 11363-2006標準規定的限量要求以下。  
注：環保使用期限的參考標取決於產品正常工作的溫度和濕度等條件。

產品中有毒有害物質或元素的名稱及含量  
根據中國《電子信息產品污染控制管理辦法》

接收器						
有毒有害物質或元素						
部件名稱	鉛 (Pb)	汞 (Hg)	鎘 (Cd)	六價鉻 (Cr (VI))	多溴聯苯 (PBB)	多溴二苯醚 (PBDE)
電纜Cable	○	○	○	○	○	○
電路板組件PWAs	○	○	○	○	○	○
塑料外殼Plastic enclosure	○	○	○	○	○	○
塑料部件Plastic parts	○	○	○	○	○	○
金屬部件Metal parts	○	○	○	○	○	○

○=表示該有毒有害物質在該部件所有均質材料中的含量均在SJ/T 11363-2006標準規定的限量要求以下。  
注：環保使用期限的參考標取決於產品正常工作的溫度和濕度等條件。

size: W290mm X H260mm 70g書紙 先風琴再對折