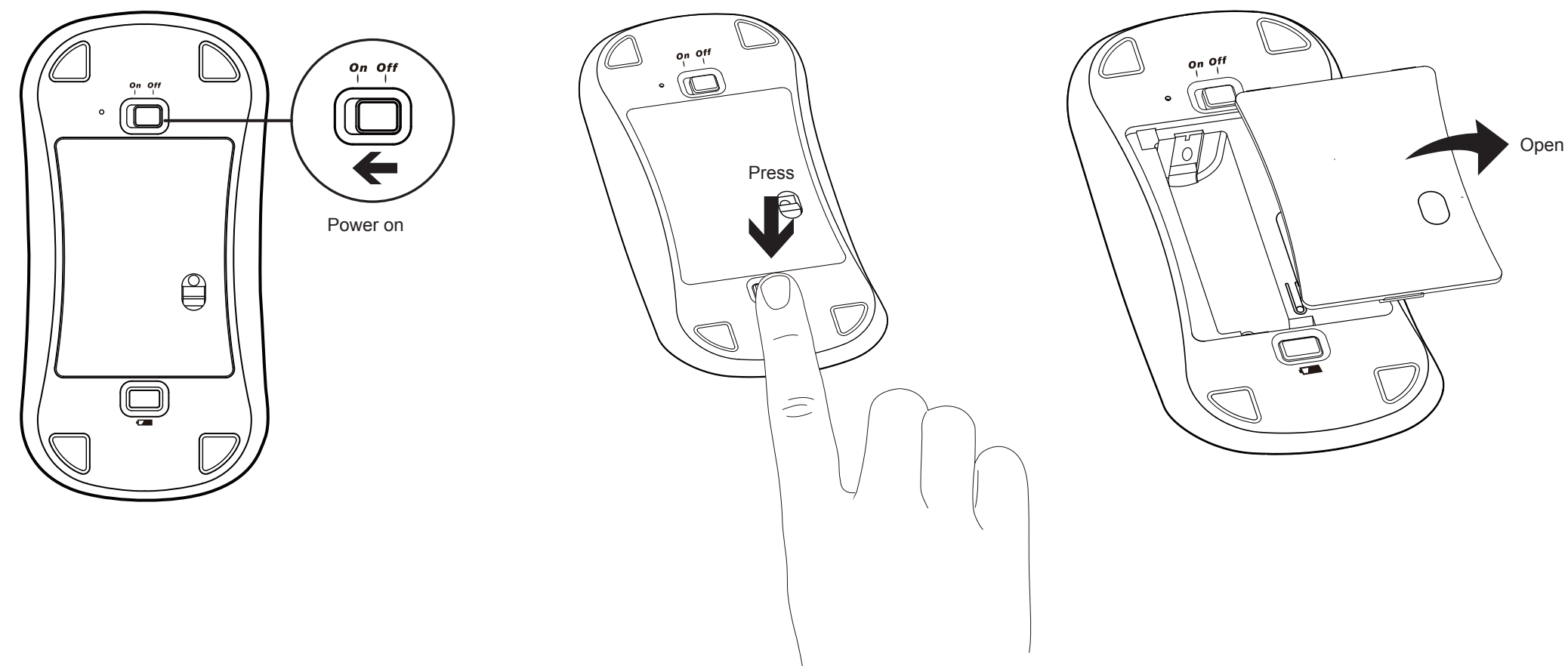


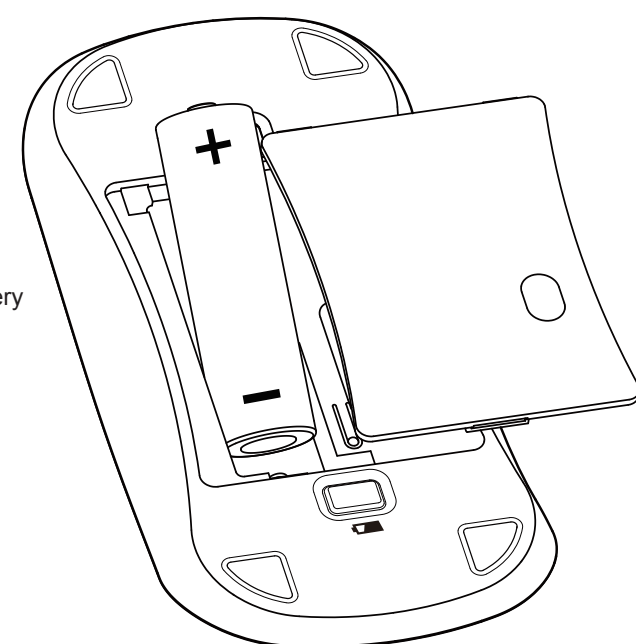
# T6

Wireless Touch Optical Mouse 雷柏無線光學觸摸滑鼠  
Quick Start Guide (V1.0)

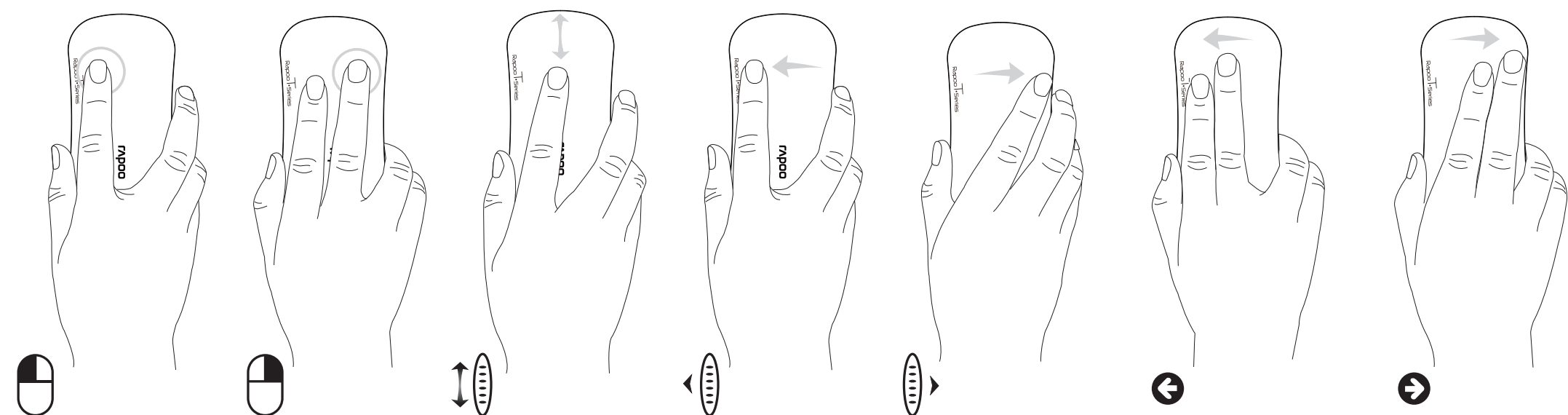
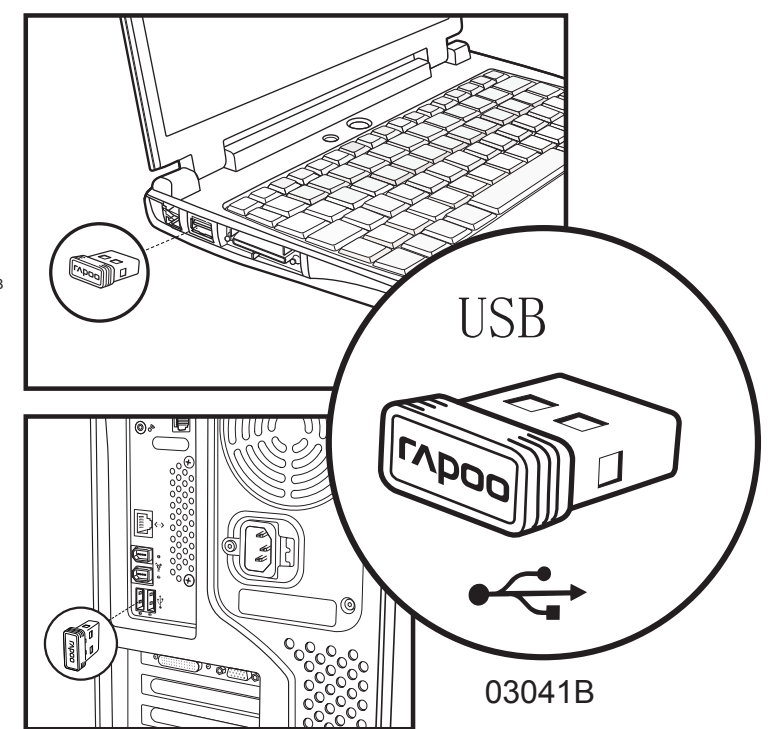
# RAPOO 雷柏



Insert the battery



Please plug the receiver into the USB port, wait about 3 seconds to use



**▶ Troubleshooting**  
See [www.rapool.com/T6/faq](http://www.rapool.com/T6/faq) for latest FAQs, drivers and quick start guide. For extensive service, register at [www.rapool.com/register](http://www.rapool.com/register).

**▶ Copyright**  
It is forbidden to reproduce any part of this quick start guide without the permission of Rapoo Technology Co., Ltd.

**▶ Safety instructions**  
Do not open or repair this device. Do not use the device in a damp environment. Clean the device with a dry cloth.

**▶ 故障分析**  
請到[www.rapool.com/T6/faq](http://www.rapool.com/T6/faq)查詢最新常見問題，請到[www.rapool.com/1620/download](http://www.rapool.com/1620/download)下載最新的驅動和快速安裝指南，如欲延長服務，請到[www.rapool.com/register](http://www.rapool.com/register)註冊。

**▶ 智慧財產權資訊**  
未經雷柏的許可，禁止複製本快速安裝指南的內容。

**▶ 安全提醒**  
請勿進行拆機或修理設備，請不要在潮濕的環境使用該設備，請用幹布擦拭鼠標。

**▶ 문제 해결**  
최근 이쪽의 소리는 이런 곳, 드라이버 및 팩 스타의 가이드에 대한 [www.rapool.com/T6/faq](http://www.rapool.com/T6/faq)를 참조하십시오. 광범위한 서비스를 위해 에 등록

**▶ 저작권**  
이 기본 시작 설명서의 어떤 부분도 Rapoo Technology Co., Ltd.의 허가 없이 복제할 수 없습니다.

**▶ 안전 지침**  
이 장치를 열거나 수리하지 마십시오. 장치를 습한 환경에서 사용하지 마십시오. 장치를 마른 걸레로 닦으십시오.

**FCC Statement**  
This equipment has been tested and found to comply with the limits for a Class B digital device, pursuant to part 15 of the FCC rules. These limits are designed to provide reasonable protection against harmful interference in a residential installation. This equipment generates, uses and can radiate radio frequency energy and, if not installed and used in accordance with the instructions, may cause harmful interference to radio communications. However, there is no guarantee that interference will not occur in a particular installation. If this equipment does cause harmful interference to radio or television reception, which can be determined by turning the equipment off and on, the user is encouraged to try to correct the interference by one or more of the following measures:  
-Reorient or relocate the receiving antenna.  
-Increase the separation between the equipment and receiver.  
-Connect the equipment into an outlet on a circuit different from that to which the receiver is connected.  
-Consult the dealer or an experienced radio/TV technician for help.  
To assure continued compliance, any changes or modifications not expressly approved by the party responsible for compliance could void the user's authority to operate this equipment. (Example- use only shielded interface cables when connecting to computer or peripheral devices).

This equipment complies with Part 15 of FCC RF Rules. Operation is subject to the following two conditions:  
1) This device may not cause interference and  
2) This device must accept any interference, including interference that may cause undesired operation of the device.

**Caution!**  
The manufacturer is not responsible for any radio or TV interference caused by unauthorized modifications to this equipment. Such modifications could void the user authority to operate the equipment.

**Declaration of Conformity**  
Hereby, ShenZhen Rapoo Technology Co., Ltd. declares that this device is in compliance with the essential requirements and other relevant provisions of Directive 1999/5/EC.

**CCC 警告語**

根據交通部低功率管理辦法規定：  
第十三條  
經型式認證合格之低功率射頻電機，非經許可，公司、商號或使用者均不得擅自變更頻率、加大功率或變更原設計之特性及功能。  
第十四條  
低功率射頻電機之使用不得影響飛航安全及干擾合法通信；經發現有干擾現象時，應立即停用，並改善至無干擾時方得繼續使用。  
前項合法通信，指依電信規定作業之無線電通信。低功率射頻電機須忍受合法通信或工業、科學及醫療用電波輻射性電機設備之干擾。

**Canada Statement**  
This device complies with Industry Canada licence-exempt RSS standard(s). Operation is subject to the following two conditions: (1) this device may not cause interference, and (2) this device must accept any interference, including interference that may cause undesired operation of the device.

Le présent appareil est conforme aux CNR d'Industrie Canada applicables aux appareils radio exempts de licence. L'exploitation est autorisée aux deux conditions suivantes: (1) l'appareil ne doit pas produire de brouillage, et (2) l'utilisateur de l'appareil doit accepter tout brouillage radioélectrique subi, même si le brouillage est susceptible d'en compromettre le fonctionnement.

