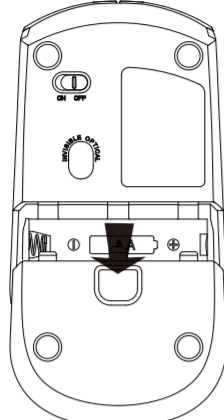


# 8000 (E2000P+1200P)

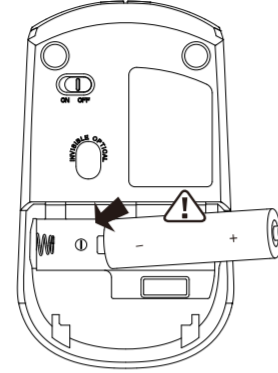
Wireless Optical Mouse & Keyboard  
Quick Start Guide (A.1)



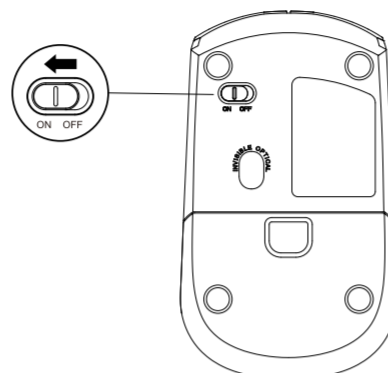
Model: 1200P  
Wireless Optical Mouse



**1** Push and then remove the battery cover.  
누른 후 배터리의 커버를 제거합니다.

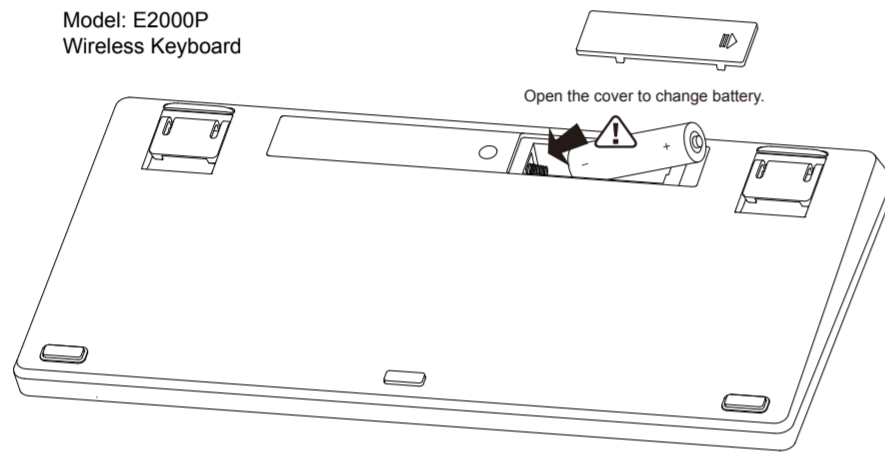


Insert the battery.  
배터리를 삽입합니다.

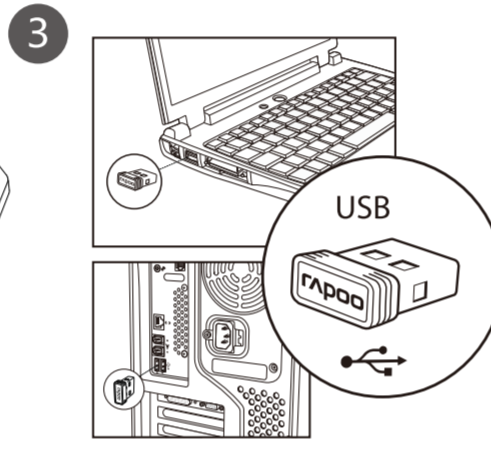


Push the switch to "on".  
스위치를 "ON" 쪽으로 누릅니다.

Model: E2000P  
Wireless Keyboard



**2**



Plug the receiver into the usb port. The receiver will match the keyboard automatically.

## Troubleshooting

See [www.rapoo.com](http://www.rapoo.com), For latest FAQs, drivers and quick start guide. For extensive service, register at [www.rapoo.com](http://www.rapoo.com).

## Copyright

It is forbidden to reproduce any part of this quick start guide without the permission of Rapoo Technology Co., Ltd.

## Safety instructions

Do not open or repair this device. Do not use the device in a damp environment. Clean the device with a dry cloth.

## Warranty

The device is provided with one-year limited hardware warranty from the purchase day. Please see [www.rapoo.com](http://www.rapoo.com) for more information.

## 故障分析

请到 [www.rapoo.com](http://www.rapoo.com) 查阅最新常见问题。请到 [www.rapoo.com](http://www.rapoo.com) 下载最新的驱动和快速安装指南。如需延长服务，请到 [www.rapoo.com](http://www.rapoo.com) 注册。

## 知识产权信息

未经许可的许可，禁止复制本快速安装指南的内容。

## 安全提醒

请不要打开或修理该设备。请不要在潮湿的环境下使用该设备。请用干布擦拭该设备。

## 문제 해결

최근 미국의 소리는 이런 곳, 드라이버 및 맥 스타트 가이드에 대한 [www.rapoo.com](http://www.rapoo.com)를 참조하십시오. 광범위한 서비스를 위해, 에 등록 [www.rapoo.com](http://www.rapoo.com) 등록하십시오.

## 저작권

이 간편 시작 설명서의 어떤 부분도 Rapoo Technology Co., Ltd. 의 허가 없이 복제될 수 없습니다.

## 안전 지침

이 장치를 열거나 수리하지 마십시오. 장치를 습한 환경에서 사용하지 마십시오. 장치를 마른 걸레로 닦으십시오.

## 보증

이 장치에는 구매일로부터 1년간의 유한 하드웨어 보증이 제공됩니다. 자세한 내용은 [www.rapoo.com](http://www.rapoo.com)를 참조하십시오.

## 故障分析

请到 [www.rapoo.com](http://www.rapoo.com) 查阅最新常见问题。请到 [www.rapoo.com](http://www.rapoo.com) 下载最新的驱动和快速安装指南。如需延长服务，请到 [www.rapoo.com](http://www.rapoo.com) 注册。

## 智慧財產權資訊

未經書面的許可，禁止複製本快速安裝指南的內容。

## 安全提醒

請不要打開或修理該設備。請不要在潮濕的環境中使用該設備。請用幹布擦拭該設備。

产品中有毒有害物质或元素名称及含量  
根据中国《电子信息产品污染控制管理办法》

部件名称	有毒有害物质或元素					
	铅 (Pb)	汞 (Hg)	镉 (Cd)	六价铬 (Cr (VI))	多溴联苯 (PBB)	多溴二苯醚 (PBDE)
电源线Cable	○	○	○	○	○	○
电源线附件PWAs	○	○	○	○	○	○
塑料附件Plastic parts	○	○	○	○	○	○
键盘 Membrane	○	○	○	○	○	○
金属附件Metal parts	○	○	○	○	○	○
橡胶底座 Rubber base	○	○	○	○	○	○

○表示该有毒有害物质在该部件所有均质材料中的含量均在SJ/T 11363-2006标准规定的限量要求以下。  
注：环保使用期限的参考值取决于产品正常工作的温度和湿度等条件。

产品中有毒有害物质或元素名称及含量  
根据中国《电子信息产品污染控制管理办法》

部件名称	有毒有害物质或元素					
	铅 (Pb)	汞 (Hg)	镉 (Cd)	六价铬 (Cr (VI))	多溴联苯 (PBB)	多溴二苯醚 (PBDE)
电源线Cable	○	○	○	○	○	○
电源线附件PWAs	○	○	○	○	○	○
塑料附件Plastic parts	○	○	○	○	○	○
金属附件Metal parts	○	○	○	○	○	○
橡胶附件 Rubber parts	○	○	○	○	○	○

○表示该有毒有害物质在该部件所有均质材料中的含量均在SJ/T 11363-2006标准规定的限量要求以下。  
注：环保使用期限的参考值取决于产品正常工作的温度和湿度等条件。

产品中有毒有害物质或元素名称及含量  
根据中国《电子信息产品污染控制管理办法》

部件名称	有毒有害物质或元素					
	铅 (Pb)	汞 (Hg)	镉 (Cd)	六价铬 (Cr (VI))	多溴联苯 (PBB)	多溴二苯醚 (PBDE)
电源线Cable	○	○	○	○	○	○
电源线附件PWAs	○	○	○	○	○	○
塑料附件Plastic parts	○	○	○	○	○	○
金属附件Metal parts	○	○	○	○	○	○
橡胶附件 Rubber parts	○	○	○	○	○	○

○表示该有毒有害物质在该部件所有均质材料中的含量均在SJ/T 11363-2006标准规定的限量要求以下。  
注：环保使用期限的参考值取决于产品正常工作的温度和湿度等条件。

## Agent Information

Country (in case)	Information	Description
Hongkong	Company name: Vinn Yield Company Address: 香港九龍新蒲崗康翠街20號怡生工業大廈字樓全層 Tel: 852-31522789	
Malaysia	Company name: AV FUTURE LINK SDN BHD Address: NO.238, JALAN 5/152, TAMAN PERINDUSTRIAN OUGS PUCHONG, 56200 KUALA LUMPUR, MALAYSIA Tel: (+606)377830011	
Viet Nam	Tên công ty địa chỉ: CÔNG TY CỔ PHẦN KỸ THUẬT CÔNG NGHỆ NAM THÀNH Số 7, Lô 14A, Khu 05 Khu phố Trưng Yên, đường Trưng Hòa, quận Cầu Giấy, Hà Nội, Việt Nam Điện thoại: 0984-4-37834530	
대한민국	회사명 주소 전화번호: (주)로이체 서울 서흥구 한호로271 90-8 관문빌딩 14층 02-701-2181 / 고객센터 02-711-0077	

## NCC警告語

根據低功率電波輻射性電機管理辦法規定：  
第十二條 經型式認證合格之低功率射頻電機，非經許可，公司、商號或使用者均不得擅自變更頻率、加大功率或變更原設計之特性及功能。  
第十四條 低功率射頻電機之使用不得影響飛航安全及干擾合法通信；經發現有干擾現象時，應立即停用，並改善至無干擾時方得繼續使用。前項合法通信，指依電信法規定作業之無線電通信。低功率射頻電機須忍受合法通信或工業、科學及醫療用電波輻射性電機設備之干擾。

"이 기기는 가정용(B급) 전자파적합기기로서 주로 가정에서 사용하는 것을 목적으로 하며, 모든 지역에서 사용할 수 있습니다."  
"당해 무선설비는 운용 중 전파혼신 가능성이 있습니다. 리시버는 당해 기기만 송수신 하도록 ID 설정이 되어 있습니다."

고객지원센터: 02-711-0077 또는 [www.royche.com](http://www.royche.com)  
로 신청상담시간: 10:00 ~ 17:00 (월~금요일)

Any Changes or modifications not expressly approved by the party responsible for compliance could void the user's authority to operate the equipment.

This device complies with part 15 of the FCC Rules. Operation is subject to the following two conditions: (1) This device may not cause harmful interference, and (2) this device must accept any interference received, including interference that may cause undesired operation.

## FCC Radiation Exposure Statement:

This equipment complies with FCC radiation exposure limits set forth for an uncontrolled environment.

This transmitter must not be co-located or operating in conjunction with any other antenna or transmitter.

Note: This equipment has been tested and found to comply with the limits for a Class B digital device, pursuant to part 15 of the FCC Rules. These limits are designed to provide reasonable protection against harmful interference in a residential installation. This equipment generates uses and can radiate radio frequency energy and, if not installed and used in accordance with the instructions, may cause harmful interference to radio communications. However, there is no guarantee that interference will not occur in a particular installation. If this equipment does cause harmful interference to radio or television reception, which can be determined by turning the equipment off and on, the user is encouraged to try to correct the interference by one or more of the following measures:

- Reorient or relocate the receiving antenna.
- Increase the separation between the equipment and receiver.
- Connect the equipment into an outlet on a circuit different from that to which the receiver is connected.

5613-12500-222