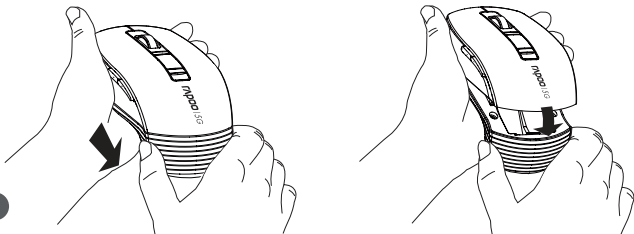


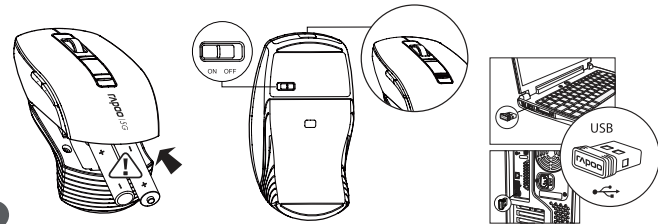
3710P

Wireless Laser Mouse

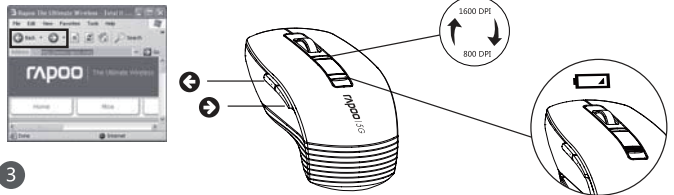
Quick Start Guide (v1.0)



1



2



3

Troubleshooting

See www.rapoo.com for latest FAQs, drivers and quick start guide. For extensive service, register at www.rapoo.com.

Copyright

It is forbidden to reproduce any part of this quick start guide without the permission of Rapoo Technology Co., Ltd.

Safety Instructions

Do not open or repair this device. Do not use the device in a damp environment. Clean the device with a dry cloth.

Warranty

The device is provided with two-year limited hardware warranty from the purchase day. Please see www.rapoo.com for more information.

故障分析

请见www.rapoo.com网页最新常见问题，下载最新驱动和快速开始指南。如需延长服务，请到www.rapoo.com注册。

知识产权信息

未经授权的许可，禁止翻印本快速开始指南的任何内容。

安全提醒

请不要打开或修理该设备。请不要在潮湿的环境下使用此设备。请用干布擦拭该设备。

문제 해결

www.rapoo.com에 가장먼 트라하여 및 최근 FAQ, 엑스다운 가이드를 참조하실 수 있습니다. 더욱 자세한 서비스 를 받고 싶다면 www.rapoo.com에 가입하시기 바랍니다.

저작권

Rapoo Technology Co., Ltd.의 허가 없이 본 엑스다운 가이드의 수정 및 배포를 금지합니다.

안전 지침

이 기기를 열거나 분해하거나 수리하지 마십시오. 기기를 습한 환경에서 사용하지 마십시오. 기기를 마른 천으로 닦으십시오.

보증

이 기기는 구매일로부터 2년간의 하드웨어 보증이 제공됩니다. 더욱 자세한 내용은 www.rapoo.com을 참조하십시오.

故障分析

請到www.rapoo.com查詢最新常見問題，下載最新的驅動和快速開始指南，如欲延長服務，請到www.rapoo.com註冊。

智慧財產權資訊

未經授权的許可，禁止翻印本快速開始指南的任何內容。

安全提醒

請不要打開或修理該設備。請不要在潮濕的環境中使用該設備。請用幹布擦拭該設備。

Agent Information

| Country/Region | Manufacturer | Distributor |
|----------------|----------------------------|----------------------------|
| North America | 3710P Wireless Laser Mouse | 3710P Wireless Laser Mouse |
| Europe | 3710P Wireless Laser Mouse | 3710P Wireless Laser Mouse |
| Asia | 3710P Wireless Laser Mouse | 3710P Wireless Laser Mouse |
| Australia | 3710P Wireless Laser Mouse | 3710P Wireless Laser Mouse |
| South America | 3710P Wireless Laser Mouse | 3710P Wireless Laser Mouse |
| Other | 3710P Wireless Laser Mouse | 3710P Wireless Laser Mouse |

代理商及經銷商信息

| 代理商 | 經銷商 |
|-----|-----|
| 代理商 | 經銷商 |
| 代理商 | 經銷商 |
| 代理商 | 經銷商 |
| 代理商 | 經銷商 |
| 代理商 | 經銷商 |
| 代理商 | 經銷商 |
| 代理商 | 經銷商 |

代理商及經銷商信息

| 代理商 | 經銷商 |
|-----|-----|
| 代理商 | 經銷商 |
| 代理商 | 經銷商 |
| 代理商 | 經銷商 |
| 代理商 | 經銷商 |
| 代理商 | 經銷商 |
| 代理商 | 經銷商 |
| 代理商 | 經銷商 |

FCC & IC Warning

This device complies with part 15 of the FCC Rules and Industry Canada licence-exempt RSS standard (s). Operation is subject to the following two conditions: (1) This device may not cause harmful interference, and (2) this device must accept any interference received, including interference that may cause undesired operation. Any Changes or modifications not expressly approved by the party responsible for compliance could void the user's authority to operate the equipment.

FCC Radiation Exposure Statement:

This equipment complies with FCC radiation exposure limits set forth for an uncontrolled environment. This transmitter must not be co-located or operating in conjunction with any other antenna or transmitter. Under Industry Canada regulations, this radio transmitter may only operate using an antenna of a type and maximum (or lesser) gain approved for the transmitter by Industry Canada. To reduce potential radio interference to other users, the antenna type and its gain should be so chosen that the equivalent isotropically radiated power (e.i.r.p.) is not more than that necessary for successful communication.

MIN:
Rating:
Approval No:
CMIT ID:

MIN:
Rating:
Approval No:
CMIT ID:



质保条款

本设备提供自购买之日起2年的有限产品硬件维修服务，具体详情请查阅www.rapoo.com。

补偿

在质保期内，您享有以下售后权利 (1) 7天内出现质量问题，根据国家“三包”规定于产品外观与包装完整的情况下，将硬件退还给购买地点或者雷柏指定地点，凭购买的有效凭证，退回您所支付的硬件产品货款。(2) 60天内出现产品质量问题，您可以到购买地点或者雷柏指定地点更换硬件产品，或者到雷柏指定的维修网点保修，更换之后的硬件保质期作为质保期的剩余天数。(3) 2年内出现产品质量问题，您可以到雷柏指定的维修网点保修。(4) 凡购买N系列产品的客户，1年内出现质量问题，您可以前往雷柏经销商处更换新品。

质保限制

本有限质保不涵盖由于以下原因导致的问题或损坏：(1) 意外事件、误用、操作不当或任何未授权的维修、改装或者拆卸；(2) 操作或维护不当，适用过程中违反产品说明或连接到不适当的电压源；(3) 或者适用并非由雷柏提供的消耗品（如备用电池），但适用法律禁止此类限制的情况除外。

| 保修期限 | 日期 | 维修情况 |
|-------|----|------|
| 购买日期 | | |
| 购买地点 | | |
| 产品序列号 | | |
| 商品编号 | | |
| 盖章 | | |

备注：请姓名亲笔填写清楚，请勿擅自涂改，并妥善保管好本保修服务卡，以维护您的合法权益。如维修服务有任何疑问，请当即电话联系与我们联系。

公司名称：深圳雷柏电子有限公司
公司地址：深圳市福田区世纪中心4号楼33层
公司电话：4008 887 778

以上质保信息仅适用于中国大陆

