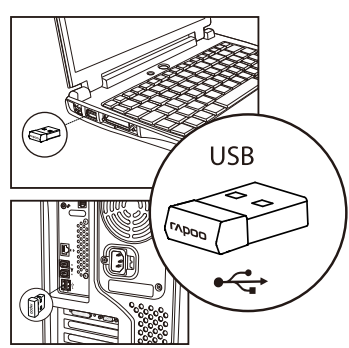
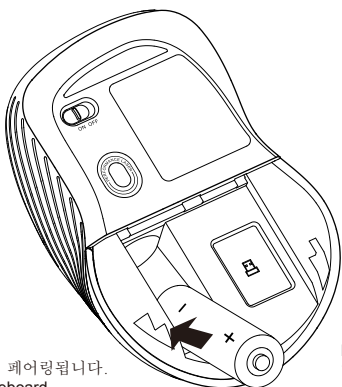


Push the switch to "on".
스위치를 "ON" 쪽으로 누릅니다.

Push and then remove the battery cover.
누른 후 배터리 커버를 제거합니다.



리시버를 USB 포트에 연결합니다. 리시버가 마우스/키보드의 작동으로 페어링됩니다.
Plug the receiver into the usb port. The receiver will pair with the mouse/keyboard automatically.



Insert the battery. 1.5V AA.
배터리를 삽입합니다. 1.5V AA.

Troubleshooting

See www.rapoo.com for latest FAQs, drivers and quick start guide. For extensive service, register at www.rapoo.com.

Copyright

It is forbidden to reproduce any part of this quick start guide without the permission of Rapoo Technology Co., Ltd.

Safety instructions

Do not open or repair this device. Do not use the device in a damp environment. Clean the device with a dry cloth.

Warranty

The device is provided with two-year limited hardware warranty from the purchase day. Please see www.rapoo.com for more information.

故障分析

请到www.rapoo.com查阅最新常见问题、下载最新的驱动和快速开始指南。如需延长服务，请到www.rapoo.com注册。

知识产权信息

未经雷柏的许可，禁止复制本快速开始指南的内容。

安全提醒

请不要打开或修理该设备。请不要在潮湿的环境使用该设备。请用干布擦拭该设备。

문제 해결

www.rapoo.com에 가시면 드라이버 및 최근 FAQ, 픽스타트 가이드를 참조하실 수 있습니다. 더욱 폭 넓은 서비스를 받고 싶다면 www.rapoo.com에 가입하시기 바랍니다.

저작권

Rapoo Technology Co., Ltd.의 허가 없이 본 픽 스타트 가이드의 수정 및 배포를 금지합니다.

안전 지침

이 기기를 직접 분해하거나 수리하지 마십시오. 기기를 습한 환경에서 사용하지 마십시오. 기기를 마른 걸레로 닦아주십시오.

보증

이 기기는 구매일로부터 2년간의 하드웨어 보증이 제공됩니다. 더욱 자세한 내용은 www.rapoo.com을 참조하십시오.

故障分析

請到www.rapoo.com查閱最新常見問題、下載最新的驅動和快速開始指南。如需延長服務，請到www.rapoo.com註冊。

智慧財產權資訊

未經雷柏的許可，禁止複製本快速開始指南的內容。

安全提醒

請不要打開或修理該設備。請不要在潮濕的環境使用該設備。請用幹布擦拭該設備。

Agent Information

Country (or area)	Information	Description
Hongkong	Company name Address Tel#	Vim Yield Company 香港九龍官塘或美田2號怡生工業大廈2字樓全層 892-31522789
Malaysia	Company name Address Tel#	AV FUTURE LINK SDN BHD NO.23A, JALAN SRI 50, TAMAN PERINDUSTRIAN DUO, PUCHONG, 58200 KUALA LUMPUR, MALAYSIA (+606)37782511
Viet Nam	Tên công ty địa chỉ điện thoại	CÔNG TY CỔ PHẦN KỸ THUẬT CÔNG NGHỆ NAM THÀNH Số 7, Đường Khu dân cư mới Trung Yên, Đường Trưng Hòa, quận Cầu Giấy, Hà Nội, Việt Nam 0084-4-37834530
대한민국	회사명 주소 전화번호	(주)오이텍 서울시 용산구 한호로2가 92-8 관운빌딩 14층 02-701-2181 / 고객센터 02-711-0077

NCC警告語

根據低功率電波輻射性電機管理辦法規定：

第十二條 經型式認證合格之低功率射頻電機，非經許可，公司、商號或使用者均不得擅自變更頻率、加大功率或變更原設計之特性及功能。

第十四條 低功率射頻電機之使用不得影響飛航安全及干擾合法通信；經發現有干擾現象時，應立即停用，並改善至無干擾時方得繼續使用。前項合法通信，指依電信法規定作業之無線電通信。低功率射頻電機須忍受合法通信或工業、科學及醫療用電波輻射性電機設備之干擾。

产品中有害物质或元素的名称及含量 根据中国《电子信息产品污染控制管理办法》

註記							
有害物質或元素							
部件名稱	鉛 (Pb)	汞 (Hg)	鎘 (Cd)	六价鉻 (Cr (VI))	多環聯苯 (PBB)	多環二苯醚 (PBDE)	
電纜Cable	○	○	○	○	○	○	○
電源接插件PWAs	○	○	○	○	○	○	○
塑料部件Plastic parts	○	○	○	○	○	○	○
金屬部件Metal parts	○	○	○	○	○	○	○
橡膠部件 Rubber parts	○	○	○	○	○	○	○

○表示该有害物质在该部件所有均质材料中的含量均在SJ/T 11363-2006标准规定的限量要求以下。
注：环保使用期限的参考值取决于产品正常工作的温度和湿度等条件。

"이 기기는 가정용(비급) 전자파적합기기로서 주로 가정에서 사용하는 것을 목적으로 하며, 모든 지역에서 사용할 수 있습니다."
"당해 무선설비는 운용 중 전파혼신 가능성이 있습니다. 리시버는 당해 기기 만 송수신 하도록 ID 설정이 되어 있습니다."

고객지원센터 : 02-711-0077 또는 www.rapoo.co.kr로 신청
상업시간 : 10:00 ~ 17:00 (월~금요일)

产品中有害物质或元素的名称及含量 根据中国《电子信息产品污染控制管理办法》

接收器							
有害物質或元素							
部件名稱	鉛 (Pb)	汞 (Hg)	鎘 (Cd)	六价鉻 (Cr (VI))	多環聯苯 (PBB)	多環二苯醚 (PBDE)	
電纜Cable	○	○	○	○	○	○	○
電源接插件PWAs	○	○	○	○	○	○	○
塑料外殼Plastic enclosure	○	○	○	○	○	○	○
塑料部件Plastic parts	○	○	○	○	○	○	○
金屬部件Metal parts	○	○	○	○	○	○	○

○表示该有害物质在该部件所有均质材料中的含量均在SJ/T 11363-2006标准规定的限量要求以下。
注：环保使用期限的参考值取决于产品正常工作的温度和湿度等条件。



质保条款

本设备提供自购买之日起2年的有限产品硬件保修服务，具体详情请查阅 www.rapoo.com。

补偿

在保质期内，您享有以下售后权利（1）7天内出现质量问题，根据国家“三包”规定于产品外观与包装完整的情况下，将硬件退还给购买地点或者雷柏指定地点，凭购买的有效凭证，退回您所支付的硬件产品货款。（2）60天内出现产品质量问题，您可以到购买地点或者雷柏指定地点更换硬件产品，或者到雷柏指定的维修网点保修。更换之后的硬件质保期为原保质期的剩余天数。（3）2年内出现产品质量问题，您可以到雷柏指定的维修网点保修。

质保限制

本有限质保不涵盖由于以下原因导致的问题或损坏：（1）意外事件、误用、操作不当或任何未授权的维修、改装或者拆卸；（2）操作或维护不当，适用过程中违反产品说明或连接到不适当的电压源；（3）或者适用并非由雷柏提供的消耗品（如备用电池），但适用法律禁止此类限制的情况除外。

保修期限	日期	維修情況
购买日期		
购买地点		
产品序列号		
商品编号		
蓋章		

备注：请将各条填写清楚，请勿擅自涂改，并妥善保管好本保修服务卡，以维护您的合法权益。如需服务或有任何疑问，请咨询当地经销商或与我们联系。

公司名称：深圳雷柏科技股份有限公司
公司地址：深圳市坪山新区锦绣东路 22 号
公司电话：4008 887 778

* 以上质保信息仅适用于中国大陆 *



5601 - 07V00 - 222

Any Changes or modifications not expressly approved by the party responsible for compliance could void the user’ s authority to operate the equipment.

This device complies with part 15 of the FCC Rules. Operation is subject to the following two conditions: (1) This device may not cause harmful interference, and (2) this device must accept any interference received, including interference that may cause undesired operation.

FCC Radiation Exposure Statement:

This equipment complies with FCC radiation exposure limits set forth for an uncontrolled environment.

This transmitter must not be co-located or operating in conjunction with any other antenna or transmitter.

Note: This equipment has been tested and found to comply with the limits for a Class B digital device, pursuant to part 15 of the FCC Rules. These limits are designed to provide reasonable protection against harmful interference in a residential installation. This equipment generates uses and can radiate radio frequency energy and, if not installed and used in accordance with the instructions, may cause harmful interference to radio communications. However, there is no guarantee that interference will not occur in a particular installation. If this equipment does cause harmful interference to radio or television reception, which can be determined by turning the equipment off and on, the user is encouraged to try to correct the interference by one or more of the following measures:

—Reorient or relocate the receiving antenna.

—Increase the separation between the equipment and receiver.

—Connect the equipment into an outlet on a circuit different from that to which the receiver is connected.

—Consult the dealer or an experienced radio/TV technician for help.

IC RSS warning

This device complies with Industry Canada licence-exempt RSS standard (s). Operation is subject to the following two conditions: (1) this device may not cause interference, and (2) this device must accept any interference,including interference that may cause undesired operation of the device.

Le présent appareil est conforme aux CNR d'Industrie Canada applicables aux appareils radio exempts de licence.

L'exploitation est autorisée aux deux conditions suivantes:

(1) l'appareil ne doit pas produire de brouillage, et

(2) l'utilisateur de l'appareil doit accepter tout brouillage radioélectrique subi, même si le brouillage est susceptible d'en compromettre le fonctionnement.

IC Radiation Exposure Statement:

This equipment complies with IC RF radiation exposure limits set forth for an uncontrolled environment. This transmitter must not be co-located or operating in conjunction with any other antenna or transmitter.

Any Changes or modifications not expressly approved by the party responsible for compliance could void the user’ s authority to operate the equipment.