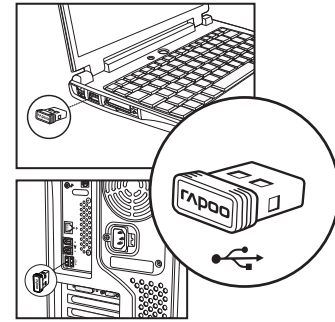
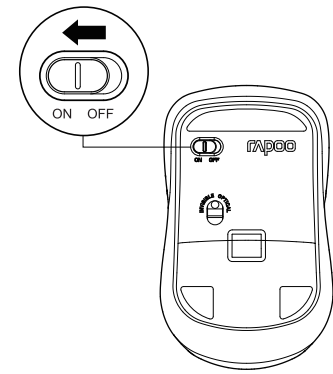
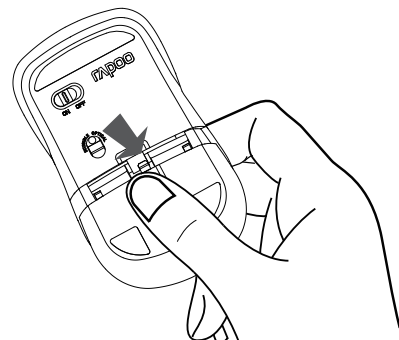


9160MS
Wireless Optical Mouse

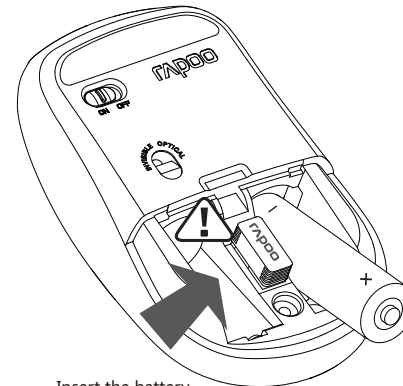
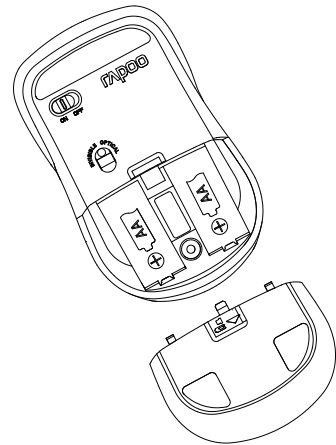
The Ultimate Wireless
rapoo



Plug the receiver into the usb port. The receiver will match the keyboard automatically.



Push and then remove the battery cover.
누른 후 배터리 커버를 제거합니다.



Insert the battery.
배터리를 삽입합니다.

Troubleshooting

See www.rapoo.com for latest FAQs, , drivers and quick start guide. For extensive service, register at www.rapoo.com.

Copyright

It is forbidden to reproduce any part of this quick start guide without the permission of Rapoo Technology Co., Ltd.

Safety instructions

Do not open or repair this device. Do not use the device in a damp environment. Clean the device with a dry cloth.

Warranty

The device is provided with one-year limited hardware warranty from the purchase day. Please see www.rapoo.com for more information.

故障分析

请到www.rapoo.com查阅最新常见问题、请到www.rapoo.com下载最新的驱动和快速安装指南。如需延长服务，请到www.rapoo.com注册。

知识产权信息

未经雷柏的许可，禁止复制本快速安装指南的内容。

安全提醒

请不要打开或修理该设备。请不要在潮湿的环境使用该设备。请用干布擦拭该设备。

문제 해결

www.rapoo.com에 가시면 드라이버 및 최근 FAQ, 픽스타트 가이드를 참조하실 수 있습니다. 더욱 폭넓은 서비스를 받고 싶다면 www.rapoo.com에 가입하시기 바랍니다.

저작권

Rapoo Technology Co., Ltd.의 허가 없이 본 픽 스타트 가이드의 수정 및 배포를 금지합니다.

안전 지침

이 기기를 직접 분해하거나 수리하지 마십시오. 기기를 습한 환경에서 사용하지 마십시오. 기기를 마른 걸레로 닦아주세요.

보증

이 기기는 구매일로부터 1년간의 하드웨어 보증이 제공됩니다. 더욱 자세한 내용은 www.rapoo.com을 참조하십시오.

故障分析

请到www.rapoo.com查阅最新常见问题、请到www.rapoo.com下载最新的驱动和快速安装指南。如需延长服务，请到www.rapoo.com注册。

智慧財產權資訊

未經雷柏的許可，禁止複製本快速安裝指南的內容。

安全提醒

請不要打開或修理該設備。請不要在潮濕的環境使用該設備。請用幹布擦拭該設備。

Agent Information

Country (or area)	Information	Description
Hongkong	Company name Address Tel#	Vim Yield Company 香港九龍官塘成業街20號怡生工業大廈2字樓全層 852-31522789
Malaysia	Company name Address Tel#	AV FUTURE LINK SDN BHD NO.23A, JALAN 5152, TAMAN PERINDUSTRIAN CUGU, PUCHONG, 55200 KUALA LUMPUR, MALAYSIA (+0060)37830011
Viet Nam	Tên công ty Địa chỉ Điện thoại	CÔNG TY CỔ PHẦN KỸ THUẬT CÔNG NGHỆ NAM THÀNH Số 7, Ng 14A, Khu đô thị mới Trung Yên, đường Trưng Hoà, quận Cầu Giấy, Hà Nội, Việt Nam 0084-4-37834530
대한민국	회사명 주소 전화번호	(주)로이체 서울시 용산구 원효로2가 92-8 리온빌딩 14층 02-701-2181 / 고객센터 02-711-0077

NCC警告語

根據低功率電波輻射性電機管理辦法規定：
第十二條 經型式認證合格之低功率射頻電機，
非經許可，公司、商號或使用者均不得擅自變
更頻率、加大功率或變更原設計之特性及功能。
第十四條 低功率射頻電機之使用不得影響飛航
安全及干擾合法通信；經發現有干擾現象時，
應立即停用，並改善至無干擾時方得繼續使用。
前項合法通信，指依電信法規定作業之無線電通
信。低功率射頻電機須忍受合法通信或工業、科
學及醫療用電波輻射性電機設備之干擾。

"이 기기는 가정용(B급) 전자파적합기기로서 주로
가정에서 사용하는 것을 목적으로 하며, 모든 지역
에서 사용할 수 있습니다."
"당해 무선설비는 운용 중 전파혼신 가능성이 있습
니다. 리시버는 당해 기기만 송수신 하도록 ID 설정
이 되어 있습니다."

고객지원센터 : 02-711-0077 또는 www.royche.com
로 신청상담시간 : 10:00 ~ 17:00 (월~금요일)

Any Changes or modifications not expressly approved by the party responsible for compliance could void the user's authority to operate the equipment.

This device complies with part 15 of the FCC Rules. Operation is subject to the following two conditions: (1) This device may not cause harmful interference, and (2) this device must accept any interference received, including interference that may cause undesired operation.

FCC Radiation Exposure Statement:

This equipment complies with FCC radiation exposure limits set forth for an uncontrolled environment.

This transmitter must not be co-located or operating in conjunction with any other antenna or transmitter.

Note: This equipment has been tested and found to comply with the limits for a Class B digital device, pursuant to part 15 of the FCC Rules. These limits are designed to provide reasonable protection against harmful interference in a residential installation. This equipment generates uses and can radiate radio frequency energy and, if not installed and used in accordance with the instructions, may cause harmful interference to radio communications. However, there is no guarantee that interference will not occur in a particular installation. If this equipment does cause harmful interference to radio or television reception, which can be determined by turning the equipment off and on, the user is encouraged to try to correct the interference by one or more of the following measures:

- Reorient or relocate the receiving antenna.
- Increase the separation between the equipment and receiver.
- Connect the equipment into an outlet on a circuit different from that to which the receiver is connected.