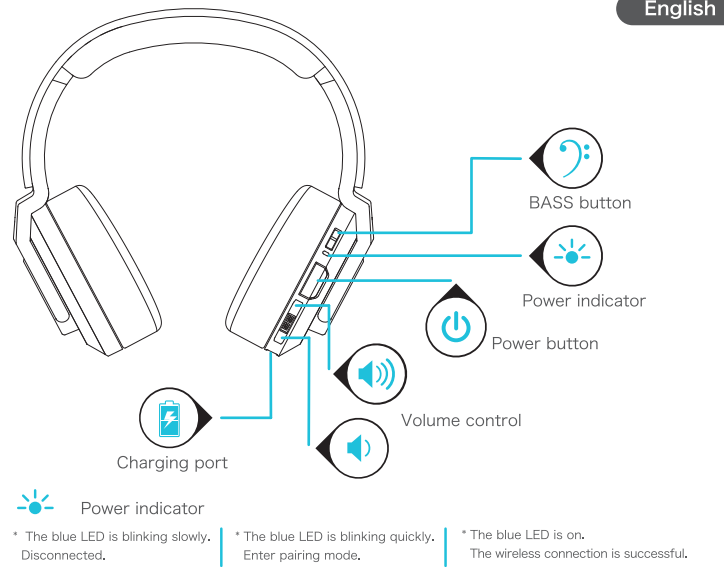




Overview



English

Turn on or off

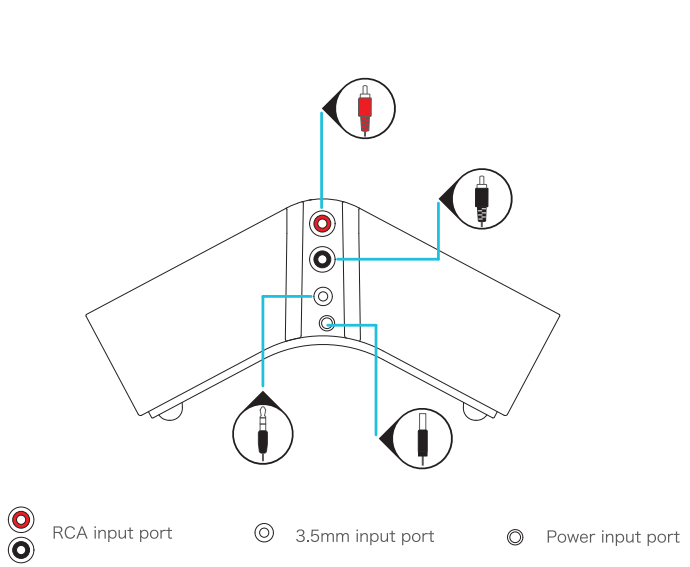
Transmitter
To turn on the transmitter, press the power button shortly.
To turn off the transmitter, press the power button shortly.

Headphone
To turn on the headphone, press the power button shortly.
To turn off the headphone, press and hold the power button.

Pair
Press and hold the power buttons of the headphone and the transmitter for 6 seconds until the blue LED starts blinking quickly when the headphone and transmitter are off.
Note: By default, the headphone has been paired.

Charging
The headphone will make a beeping sound when the battery is low, please charge it in time.
Put the headphone on the transmitter, the blue LED will turn while the headphone is charging.
Note: Please make sure the charging port and charging contacts are connected.

Overview



Troubleshooting

No sound at all
Make sure you have charged the headphone.
Make sure the power of the transmitter has been turned on and the audio cable is connected correctly.

Bad sound quality
Wireless transmission distance may vary according to actual usage conditions, please make sure there are no big objects blocking the range.
Move other working wireless devices away from the audio device.

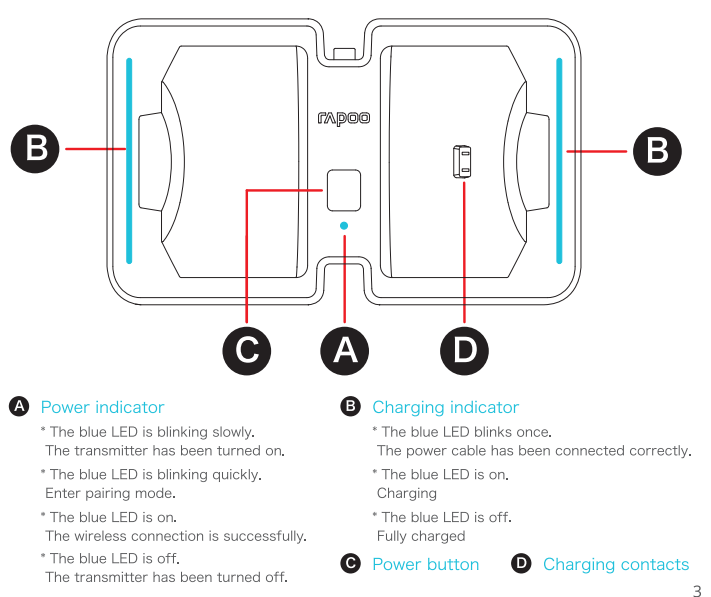
Wireless connection is unsuccessful
Make sure you have charged the headphone.
Make sure you have turned on the headphone and the transmitter.
The headphone will automatically turn off if there is no audio input for 15 minutes. Please restart it.
If the problem is not solved, please repair the connection.

Package Contents

Packungsinhalt | Contenu du Paquet | Contenuto della confezione |
Contenidos del Embalaje | Inhoud van de verpakking

Wireless headphone Schnurloser Kopfhörer Écouteurs sans fil Cuffie wireless Auriculares inalámbricos Draadloze hoofdtelefoon	Transmitter Sender Transmetteur Trasmittore Transmissor Zender	Power adapter Netzteil Adaptateur secteur Adattatore di alimentazione Adaptador de corriente Voedingsadapter	Quick start guide Schnellstartanleitung Guide de démarrage rapide Guida introduttiva Guia de inicio rápido Beknopte handleiding
3,5mm cable 3,5 mm Kabel Cable 3,5mm Cavo 3,5mm Cable de 3,5 mm 3,5mm-kabel	USB to DC 5V cable USB/DC 5V-kabel Cable USB vers DC 5V Cavo DC 5V da USB Cable de USB a DC 5V USB naar DC 5V-kabel	RCA cable/RCA Kabel, Cable RCA,Cavo RCA, Cable RCARCA-kabel	

Overview



A Power indicator
* The blue LED is blinking slowly, The transmitter has been turned on.
* The blue LED is blinking quickly, Enter pairing mode.
* The blue LED is on, The wireless connection is successfully.
* The blue LED is off, The transmitter has been turned off.

B Charging indicator
* The blue LED blinks once, The power cable has been connected correctly.
* The blue LED is on, Charging
* The blue LED is off, Fully charged

C Power button

D Charging contacts

Safety instructions
Do not open or repair this device. Do not use the device in a damp environment. Clean the device with a dry cloth.

Warranty
The device is provided with two-year limited hardware warranty from the purchase day. Please see www.rapoo.com for more information.
Copyright
It is forbidden to reproduce any part of this quick start guide without the permission of Rapoo Technology Co., Ltd.

WEEE
Do not dispose of the device with household waste.
CE
The device meets the essential requirements and other relevant provisions of the applicable European directives. The Declaration of Conformity is available at www.rapoo.com.

Инструкции по технике безопасности
Не пытаться или ремонтировать устройство самостоятельно. Запрещается использовать устройство во влажных местах. Выполняйте очистку устройства сухой тканью.

Гарантия
Данное устройство предоставляется с ограниченной гарантией на аппаратное обеспечение сроком два года со дня покупки. Более подробную информацию можно найти на сайте www.rapoo.com.

Авторское право
Запрещается воспроизводить любую часть настоящего краткого руководства без разрешения Rapoo Technology Co., Ltd.

WEEE
Не утилизируйте устройство вместе с другими бытовыми отходами.
CE
Устройство соответствует основным требованиям и другим важным нормативным требованиям европейских директив. Текст декларации соответствия доступен по адресу www.rapoo.com.

Όδηγίες ασφαλείας
Μην ανοίξετε ή προσπαθήσετε να επισκευάσετε το προϊόν. Μην χρησιμοποιείτε το προϊόν σε υγρές συνθήκες. Καθαρίστε το προϊόν με ένα στεγνό πανί.

Εγγύηση
Η παρούσα συσκευή παρέχεται με άμεση περιορισμένη εγγύηση για το υλικό υπό την προϋπόθεση ότι η συσκευή χρησιμοποιείται σύμφωνα με τις οδηγίες.

Πνευματικά δικαιώματα
Απαγορεύεται η αναπαραγωγή ή η μεταφορά οποιουδήποτε μέρους αυτού του οδηγού χρήσης χωρίς την άδεια της Rapoo Technology Co., Ltd.

WEEE
Μην αναμιγνύετε τη συσκευή μαζί με το οικιακό απόβλητο.
CE
Η συσκευή συμμορφώνεται με τις βασικές απαιτήσεις και άλλες σχετικές προϋποθέσεις των εφαρμοστέων ευρωπαϊκών οδηγιών. Η δήλωση συμμόρφωσης είναι διαθέσιμη στη διεύθυνση www.rapoo.com.

Instruções de segurança
Não abra nem efetue reparações a este dispositivo. Não utilize o dispositivo em ambientes húmidos. Limpe o dispositivo apenas com um pano seco.

Garantia
Este dispositivo é fornecido com uma garantia de hardware limitada de dois anos com início no dia de compra. Consulte www.rapoo.com para mais informações.

Direitos de autor
É proibido reproduzir qualquer parte deste guia de consulta rápida sem a permissão da Rapoo Technology Co., Ltd.

WEEE
Não elimine este dispositivo junto com o lixo doméstico.
CE
O dispositivo cumpre os requisitos essenciais e outras disposições relevantes das diretivas Europeias aplicáveis. A Declaração de Conformidade está disponível em www.rapoo.com.

Sikkerhedsinstruktioner
Ikke åbn eller reparer dette apparat. Ikke brug apparatet i et fugtigt miljø. Hold apparatet med en tør klud.

Garanti
Apparatet leveres med en to-års begrænset maskinvaregaranti fra købsdatoen. Se www.rapoo.com for nærmere informationer.

Opphavsrett
Det er forbudt å gjenskrive noen del av denne hurtigstartguiden uten tillatelse fra Rapoo Technology Co., Ltd.

WEEE
Ikke kast apparatet sammen med restaffall fra husholdningen.
CE
Apparatet inneholder de nødvendige miljøkravene og andre relevante lover / de aktuelle europeiske direktivene. Samsvarendeklaringen er tilgjengelig på www.rapoo.com.

Bezpečnostní pokyny
Nepokoušejte se ovládat, opravovat ani neupravovat. Nepoužívejte zařízení ve vlhkém prostředí. Zařízením čistěte suchým hadříkem.

Záruka
Pro zařízení je poskytována omezená záruka na hardware ode dne zakoupení. Další informace viz www.rapoo.com.

Autorská práva
Bez přetvoření není povoleno reprodukovat Rapoo Technology Co., Ltd. ani žádnou část tohoto rychlého návodu.

WEEE
Zařízení nelze likvidovat s domácnostním odpadem.
CE
Toto zařízení splňuje základní požadavky a ostatní příslušná ustanovení platných evropských směrnic. Prohlášení o shodě je k dispozici na www.rapoo.com.

Contents

Language	Page
English	01 - 06
Français	07 - 12
Deutsch	13 - 18
Italiano	19 - 24
español	25 - 30
Nederlands	31 - 36
Україна	37 - 42

Connect cables



Instrucțiuni de siguranță
Nu deschideți și nu reparați dispozitivul. Nu utilizați dispozitivul într-un mediu umed. Curățați dispozitivul cu o cârpă uscată.

Garantie
Dispozitivul beneficiază de o garanție limitată pentru hardware timp de doi ani de la data achiziționării. Consultați www.rapoo.com pentru informații suplimentare.

Drept de autor
Se interzice reproducerea oricărei părți din acest ghid de pornire rapidă fără permisiunea Rapoo Technology Co., Ltd.

WEEE
Nu eliminați dispozitivul împreună cu deșeurile menajere.
CE
Acest dispozitiv respectă cerințele esențiale și altele relevante din directivile europene aplicabile. Declarația de conformitate este disponibilă la adresa www.rapoo.com.

Biztonsági óvintézkedések
Ne nyissa fel, és ne próbálja egyedül megjavítani a készüléket. Ne használja az eszközt párás környezetben. Az eszközt száraz kendővel tisztítsa.

Jótállás
Az eszköz két éves korlátozott hardvergaranciával rendelkezik, amely a vásárlás napjától kezdődik. További információkat kérhesz fel a következő címen: www.rapoo.com.

Szerelési jog
Tiltás a gyári szerelés helyettesítés útmutató bármely részét sokszoroztatni Rapoo Technology Co., Ltd. engedélyje nélkül.

WEEE
Ne dobja ki az eszközt általános háztartási hulladékként.
CE
Ez az eszköz teljesíti a vonatkozó európai irányelvek alapvető követelményeit és azok egyéb vonatkozó követéseit. A Megfelelőségi Nyilatkozat a www.rapoo.com oldalon érhető el.

Sikkerhedsinstruktioner
Du må ikke åbne eller forsøge at reparere denne enhed. Brug ikke denne enhed i fugtige omgivelser. Hold apparatet med en tør klud.

Garanti
Denne enhed er forsynet med to års garanti fra købsdatoen. Se yderligere oplysninger på www.rapoo.com for mere information.

Copyright
Det er forbudt at reproducere enhver del af den hurtigstartguide uden tilladelse fra Rapoo Technology Co., Ltd.

WEEE
Bortkast ikke dette apparat i husholdningsaffaldet.
CE
Denne enhed opfylder de essentielle krav og andre relevante bestemmelser i de gældende europæiske direktiver. Deklarationen om overensstemmelse er tilgængelig på www.rapoo.com.

Güvenlik talimatları
Bu aleti açmayın ya da onarmayın. Bu aleti nemli bir ortamda kullanmayın. Aleti kuru bir bezle temizleyin.

Garanti
Bu alet için sınırlı donanım garantisi iki yıldır geçerlidir. Daha fazla bilgi için, www.rapoo.com adresine bakınız.

Telif Hakları
Rapoo Technology Co., Ltd'nin izni olmadan bu hızlı başlangıç kılavuzunun herhangi bir bölümünü çoğaltılamaz ya da yayımlanamaz.

WEEE
Bu aleti evsel atıktarla beraber atmayın.
CE
Bu alet, gerekli Avrupa yönetmeliklerini temel şartlarına ve diğer ilgili hükümlerine uygundur. Uygunluk beyanı www.rapoo.com adresinde mevcuttur.

Инструкция за безопасност
Не отваряйте и не ремонтирате това устройство. Не използвайте устройството в среда с висока влажност. Устройството да се почиства със сухо парче плат.

Гарантия
Устройството се предоставя с двугодишна ограничена гаранция, свързана с датата на покупка. Вижте www.rapoo.com за повече информации.

Авторско право
Забранява се възпроизвеждането на която и да е част от това ръководство за бързо стартиране без позволение на Rapoo Technology Co., Ltd.

WEEE
Не отхвърляйте устройството заедно с домашните отпадъци.
CE
Устройството отговаря на основните условия и на изискванията на приложимите европейски директиви. Декларацията за съответствие е налична на адрес www.rapoo.com.

Tárkielési turvallsuositaja
Äls avn eller försök att reparera denna enhet. Använd inte denna enhet i fuktiga miljöer. Håll enheten ren med en torr klud.

Takuu
Tällä laitteella on kahden vuoden rajoitettu laitevarauskausi ostopäivästä lähtien. Lisätietoja saat osoitteesta www.rapoo.com.

Tekijinoikeudet
Osa kuka tahansa muuttanut tämän ohjeen mukaisesti ilman Rapoo Technology Co., Ltd:n lupailta kiellettyä.

WEEE
Älä hävittä laiteita kotitalousjätteen mukana.
CE
Tämä laite on soveltuvin osin valmistettu direktiivien ja muiden asiaan liittyvien lausekkeiden vaatimusten mukaisesti. Vastavuorokäytännöksi on saatavilla osoitteesta www.rapoo.com.

Declaration of Conformity

We, the manufacturer
Shenzhen Rapoo Technology Ltd., Co.
Fax: 0755-2658 8555

Declare that the product

Product Name	Wireless Home Entertainment Headphone
Model No	H600

Complies with the following norms of:

EN 301 893	
EN 301 488-1	V1.3.2 (2011-09)
EN 301 488-3	V1.5.1 (2013-08)
EN 60950-1	2006 + A11:2009 + A1:2010 + A12:2011
EN 62479	

The product is in compliance with the essential requirements of Council Directives 2006/95/EC and 90/269/EEC and the RCHS European directives 2002/95/EC dated on January 27th 2003 amended by directive 2005/618/EC dated on August 18th 2005.

Manufacturer/Authorised representative

Charles Tsou

Charles Tsou, Manager
R&D Department Date of Issue: June,10, 2014

For France only
Par la présente, le fabricant - SANGHA déclare que l'appareil [Écouteurs de divertissement à domicile sans fil H600] est conforme aux exigences essentielles et aux autres dispositions pertinentes de la directive 1999/5/CE.
Pour vous procurer une copie de la déclaration de conformité, il faut adresser un courrier à l'adresse suivante en précisant le ou les produits dont vous désirez obtenir les déclarations de conformité :
SANGHA France
219 Avenue de Provence
13720 Saint Victore

5606-02000-222

Any Changes or modifications not expressly approved by the party responsible for compliance could void the user's authority to operate the equipment.
This device complies with part 15 of the FCC Rules. Operation is subject to the following two conditions: (1) This device may not cause harmful interference, and (2) this device must accept any interference received, including interference that may cause undesired operation.

FCC Radiation Exposure Statement:

This equipment complies with FCC radiation exposure limits set forth for an uncontrolled environment.
07005 should be installed and operated with minimum distance 20cm between the radiator& your body.
This transmitter must not be co-located or operating in conjunction with any other antenna or transmitter.

Note: This equipment has been tested and found to comply with the limits for a Class B digital device, pursuant to part 15 of the FCC Rules. These limits are designed to provide reasonable protection against harmful interference in a residential installation.
This equipment generates uses and can radiate radio frequency energy and, if not installed and used in accordance with the instructions, may cause harmful interference to radio communications. However, there is no guarantee that interference will not occur in a particular installation.
If this equipment does cause harmful interference to radio or television reception, which can be determined by turning the equipment off and on, the user is encouraged to try to correct the interference by one or more of the following measures:
—Reorient or relocate the receiving antenna.
—Increase the separation between the equipment and receiver.
—Connect the equipment into an outlet on a circuit different from that to which the receiver is connected.
—Consult the dealer or an experienced radio/TV technician for help.

IC RSS warning
This device complies with Industry Canada licence-exempt RSS standard (s). Operation is subject to the following two conditions: (1) this device may not cause interference, and (2) this device must accept any interference,including interference that may cause undesired operation of the device.
Le présent appareil est conforme aux CNR d'Industrie Canada applicables aux appareils radio exempts de licence.
L'exploitation est autorisée aux deux conditions suivantes:
(1) l'appareil ne doit pas produire de brouillage, et
(2) l'utilisateur de l'appareil doit accepter tout brouillage radioélectrique subi, même si le brouillage est susceptible d'en compromettre le fonctionnement.

IC Radiation Exposure Statement:
This equipment complies with IC RF radiation exposure limits set forth for an uncontrolled environment. This transmitter must not be co-located or operating in conjunction with any other antenna or transmitter.
Any Changes or modifications not expressly approved by the party responsible for compliance could void the user's authority to operate the equipment.
07005 should be installed and operated with minimum distance 20cm between the radiator& your body.

Indoor use only.