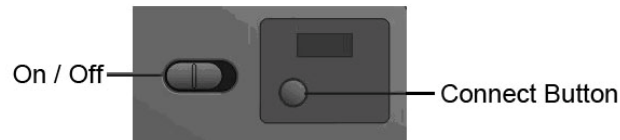


**Quick Start Guide**  
**Of**  
**Bluetooth Optical Mouse**  
**V0.2**

# Installation

## Step1. Inserting Batteries

1. Remove the battery cover.
2. Insert 2 AAA batteries.
3. Place back the battery cover. As the Mouse has power switch, please make sure the power switch is on.



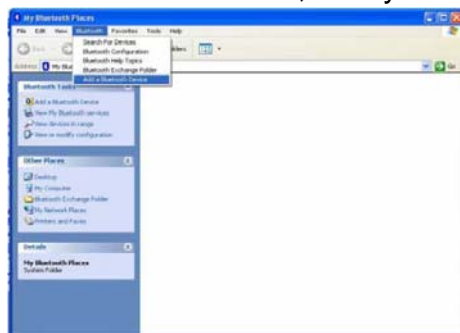
## Step2. Connecting the Mouse to the Dongle

Before you install the Bluetooth Mouse, please make sure that your computer supports Bluetooth function, and you have finished the Bluetooth software installation. Software available like Wincomm, IVT or the Microsoft built-in software. Press the connect button at the bottom more than 1 second, then the mouse is ready for the match, please note that the connect button is only useful during the match procedure.

### Match Procedure

#### A. Match on Wincomm

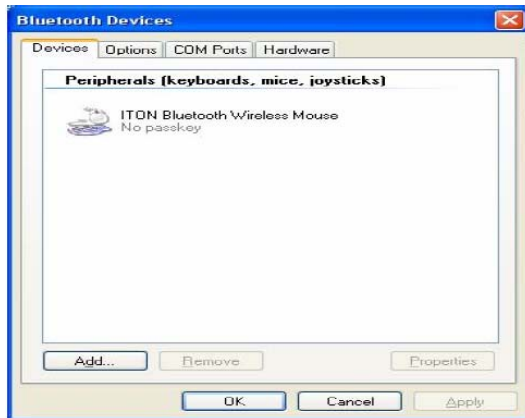
1. Double click the icon again, "My Bluetooth Place" pops up.
2. Click "Bluetooth Setup – Bluetooth Setup Guide".
3. In the Setup Guide window, click next button, wait until the system finds the mouse, select "Mouse", click "Next". Hint for connection.
4. Click "Click here", now you can use your mouse at ease.



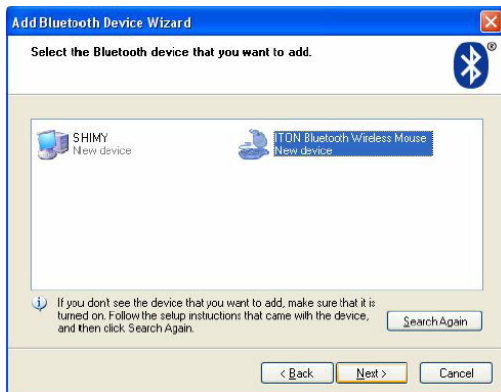


## B. Match on Microsoft built-in software

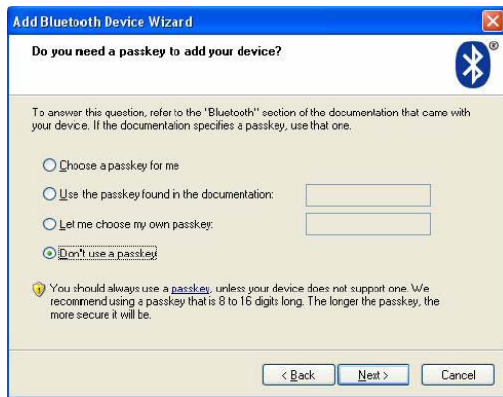
1. Make sure that the Bluetooth Function has been activated. Double click the Bluetooth Icon on the Task Bar or in the Control Panel, open the “Bluetooth Management” window, click “Add”, tick off “facility is ready for searching”, click “Next”.



2. Wait till the Mouse is found, select mouse, click “Next”.

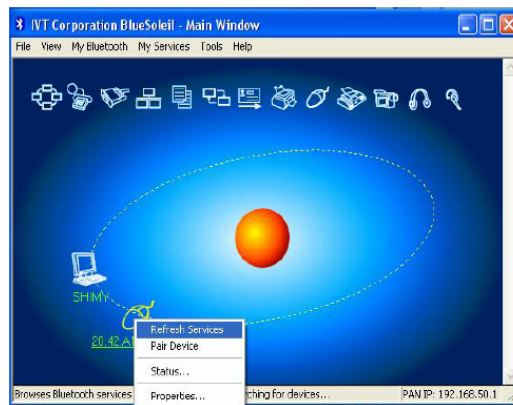
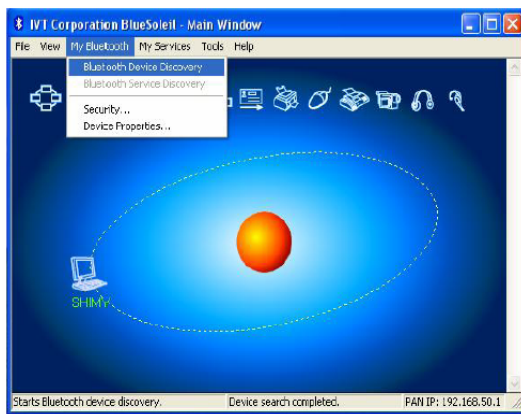


3. Select “No Password”, click “Next”, the system will install the new facility automatically.



### C. Match on IVT software

1. Make sure that the Bluetooth Function has been activated. Double click the Bluetooth Icon, open the Management window, select "Search for Bluetooth facilities" or click the Round Ball in the middle of the window.
2. Click the Bluetooth Mouse founded, click the right button for "Refresh Service".



3. Select the Bluetooth Mouse again, click the right button for "Connect-Bluetooth Input Service", the system will auto install the HID facility. After that you can use you Bluetooth Mouse at ease.



# Mouse Function



## Speed Control

Press the CPI button and you can toggle the CPI between 800 CPI and 1600 CPI (Laser Version, Optical is between 500 CPI and 1000 CPI)

## Troubleshooting

1. Before you install your Bluetooth Mouse, please make sure you have done the Bluetooth Dongle installation procedure, and the Bluetooth facility is turned on.
2. If you press the Connect Button inadvertently or some abnormal disconnection occurs during using, please reconnect the mouse. If unable to rematch, kindly delete the Mouse Icon to erase the stored info of the mouse in the computer.
3. Make sure there is no change of the Bluetooth facility. If anything changed, please kindly rematch.
4. Please kindly check the batteries. If they are short of power, replace them with new ones.

## FCC Statement

This equipment has been tested and found to comply with the limits for a Class B digital device, pursuant to part 15 of the FCC rules. These limits are designed to provide reasonable protection against harmful interference in a residential installation. This equipment generates, uses and can radiate radio frequency energy and, if not installed and used in accordance with the

instructions, may cause harmful interference to radio communications. However, there is no guarantee that interference will not occur in a particular installation. If this equipment does cause harmful interference to radio or television reception, which can be determined by turning the equipment off and on, the user is encouraged to try to correct the interference by one or more of the following measures:

- Reorient or relocate the receiving antenna.
- Increase the separation between the equipment and receiver.
- Connect the equipment into an outlet on a circuit different from that to which the receiver is connected.
- Consult the dealer or an experienced radio/TV technician for help.

To assure continued compliance, any changes or modifications not expressly approved by the party responsible for compliance could void the user's authority to operate this equipment. (Example- use only shielded interface cables when connecting to computer or peripheral devices).

## **Radiation Exposure Statement**

This equipment complies with FCC radiation exposure limits set forth for an uncontrolled environment and it also complies with Part 15 of FCC RF Rules. Operation is subject to the following two conditions:

- 1) This device may not cause interference and
- 2) This device must accept any interference, including interference that may cause undesired operation of the device.

## **Caution!**

The manufacturer is not responsible for any radio or TV interference caused by unauthorized modifications to this equipment. Such modifications could void the user authority to operate the equipment.