



FCC Information

FCC

This equipment has been tested and found to comply with limits for Class B digital device pursuant to Part 15 of Federal Communications Commission (FCC) rules.

FCC Compliance Statement

These limits are designed to provide reasonable protection against frequency interference in residential installation. This equipment generates, uses, and can radiate radio frequency energy, and if not installed or used in accordance with the instructions, may cause harmful interference to radio communication. However, there is no guarantee that interference will not occur in television reception, which can be determined by turning the equipment off and on. The user is encouraged to try and correct the interference by one or more of the following measures:

- Reorient or relocate the receiving antenna
- Increase the separation between the equipment and the receiver
- Connect the equipment into an outlet on a circuit different from that to which the receiver is connected to.

6

CAUTION!

The Federal Communications Commission warns the user that changes or modifications to the unit not expressly approved by the party responsible for compliance could void the user's authority to operate the equipment.

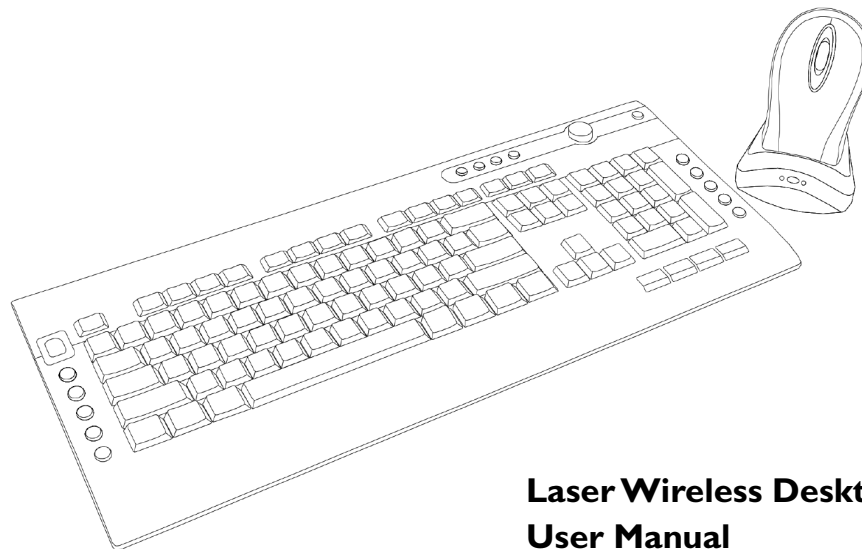
Warranty Information

3 Year Limited Warranty

IPSG warrants this product to be free of defects in materials or workmanship. This warranty does not include damage resulting from accident or misuse. If this product should become defective, return to your place of purchase. This warranty is in lieu of all other warranties expressed or implied including the implied warranties of merchantability of fitness for a particular purpose, whether arising by law, custom or conduct, and the rights and remedies provided under this warranty are exclusive and in lieu of any other rights or remedies. In no event shall IPSG be liable for consequential damages. Contact us at www.ipsgproducts.com.

IPSG, Hilliard, OH, 1-877-743-3549
www.ipsgproducts.com

Printed in China



Laser Wireless Desktop User Manual



User's Record

To provide quality customer service and technical support, it is suggested that you keep the following information as well as your store receipt and this user's manual.

Date of Purchase:

Serial Number:

Package Contents

Your new Laser Wireless Desktop will ship with the following items:

- Wireless Desktop
- Laser Wireless Mouse
- Recharging cradle with USB connector
- 2 AAA Ni-MH rechargeable batteries for the mouse
- 2 AA Alkaline batteries for keyboard
- User's Manual and Warranty Information

System Requirements

Please be sure that you meet all of the system requirements below to avoid difficulties during installation.

- IBM PCs or 100% compatibles
- Windows® ME, 2000, XP
- Available USB port

System Specifications

Your new keyboard and mouse complies with the following specifications:

- 1600dpi
- USB Interface

C. Application Access Keys

By default, your computer has a set of pre-installed applications, when your computer is powered on these applications can be accessed using the below set of keys:



Access Homepage

Press this button to access your default homepage from your default web browser (e.g. Microsoft® Internet Explorer).



Access E-mail Client

Press this button to open your default e-mail client (e.g. Microsoft® Outlook).



Access Favorites

Press this button to access your "Favorites" folder from your default web browser (e.g. Microsoft® Internet Explorer).



Access Media Player

Press this button to open your default media player (e.g. Windows® Media Player).

D. Internet Navigation Keys

When your web browser is open (e.g. Microsoft® Internet Explorer), you can use the below set of keys to navigate around the open webpage:



Scroll Wheel

Scroll this wheel to go up or down on the open page (if applicable).



Back

Press this button to go back to the previous page (if applicable).



Forward

Press this button to proceed to the next page (if applicable).



Search

Press this button to open the search panel.



Refresh

Press this button to refresh the current page.



Stop

Press this button to stop loading the current page.



beginning of the playing track; double-click it to go to the previous track.



Step Forward

Press this button to go to the next track.



Stop

Press this button to stop the current track.



Volume Control

Adjust this dial to adjust the volume of your speakers (Left = Volume Down; Right = Volume Up).



Mute

Press this button to mute the volume on your speakers.

B. System Keys

Depending on your system's motherboard configuration, when your system is powered on you can use the below set of keys to control your computer:



Power Off

Press this button to power off your computer by default.*



Standby

Press this button to put your computer in Standby mode by default.*



Wakeup

When your computer is in Standby mode, press this button to wake it up.



My Computer

Press this button to access "My Computer".



Calculator

Press this button to open Windows® Calculator.

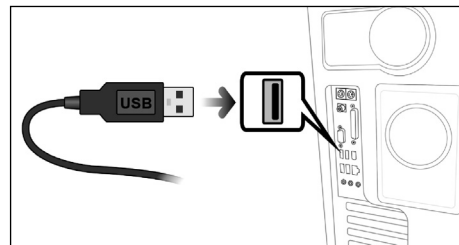
* This function can be configured in Windows® Power Management depending on your system's motherboard configuration.

Installation

Note: The pictures shown in the User's Manual are for demonstration purposes only. Your computer or product may look slightly different.

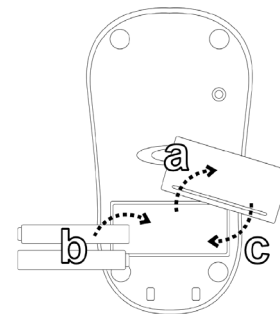
I. Connect your rechargeable cradle with built-in receiver to your computer

- Turn on your computer and wait for it to load.
- Connect your rechargeable cradle into an available USB port on your computer.
- Your computer will detect your USB device, and the necessary drivers will be installed automatically.



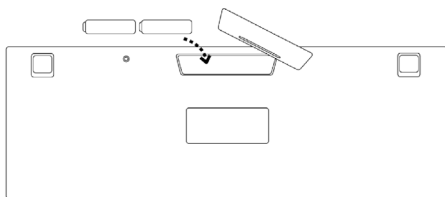
2. Install Batteries into your Mouse

- Remove the battery compartment cover from the bottom of your mouse.
- Install the AAA rechargeable batteries into the battery compartment following the battery orientation guide in the battery bay.
- Replace the battery compartment cover back onto your mouse until it securely locks.
- Your mouse will establish a connection with the receiver. If a connection is not established, proceed to the *Establish a Connection* section of this manual.



3. Install Batteries into your Keyboard

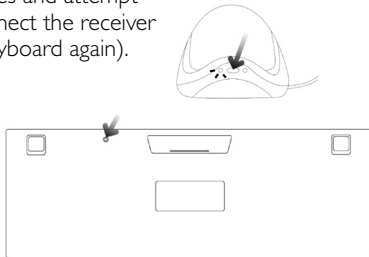
- Remove the battery compartment cover from the bottom of your keyboard.
- Install two AA Alkaline batteries into the battery compartment following the battery orientation guide in the battery bay.
- Replace the battery compartment cover back onto your keyboard until it securely locks.
- Your keyboard will establish a connection with the receiver automatically. Your keyboard and mouse are now ready to be used. For more information about your special function keys please see the Special Function Keys Section of the manual. If a connection is not automatically established, proceed to the Establish a Connection section of this manual.



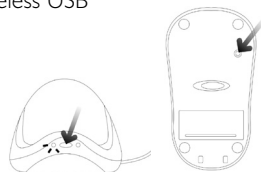
2

4. Establish a Connection

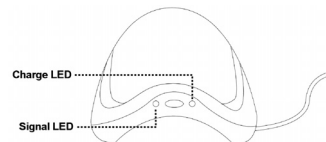
- To connect your keyboard, press the connect button on the wireless USB receiver, and then press the connect button on the bottom of your keyboard. (NOTE: If a successful connection is not able to be established, please remove the batteries from your keyboard for 10 seconds to clear the memory. Then replace the batteries and attempt to connect the receiver and keyboard again).



- To connect your mouse, press the connect button on the wireless USB receiver, and then press the connect button on the bottom of your mouse.



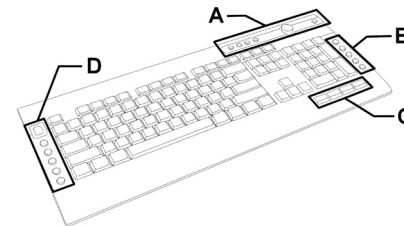
- There are two LED Indicators on your wireless USB receiver which indicate the status of your keyboard, mouse and computer:



LED Indicator	Status	Description
Signal LED (Green)	-Solid	Connected/no activity
	-Blinking	Scanning for a connection
	-Blinking slowly	Keyboard and/or mouse are inactive
Charge LED (Red)	-Solid On	Charging mouse
	-Off	Battery full/not charging

Special Function Keys

There are 4 sets of pre-programmed special function keys located on your keyboard, please see the chart indicating each set and a description of each set below:



A. Media Navigation Keys

When your default media player is turned on and active, you can use the below set of keys to navigate your playlist:



Play/Pause

Press this button to play (or pause) the current track.



Step Backward

Press this button to go back to the

3