

TV Transmitter

User Guide | Master



Hearing
Systems

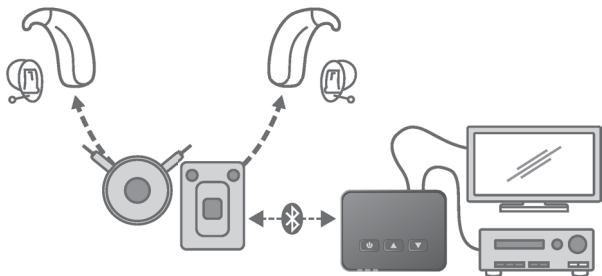
SIEMENS

Content

Before you start	3
Included in delivery	4
Components	4
Getting started	5
Connecting to power supply	5
Connecting to audio devices	6
Pairing the transmitter	7
Daily use	8
Using the transmitter	8
LED status indication	9
Important safety information	11
Personal safety	11
Product safety	13
Important information	15
Explanation of symbols	15
Maintenance and care	16
Disposal information	16
Conformance information	16

Before you start

The transmitter is an accessory for our remote controls with audio streaming capability. The transmitter connects TV, stereo, or MP3 player as well as many other electronic devices without Bluetooth® functionality to the remote control for your hearing instruments. Using the transmitter you will wirelessly stream sounds directly into the hearing instruments.



CAUTION

Read this user guide thoroughly and completely and follow the safety information in this document to avoid damage or injury.

* The Bluetooth word mark and logos are owned by the Bluetooth SIG, Inc., and any use of such marks by Signia GmbH is under licenses. Other trademarks and trade names are those of their respective owners.

Included in delivery

- Transmitter
- Power plug with different adapters
- USB power cable
- Audio cable with 3.5 mm stereo plugs
- Adapter RCA (cinch) to 3.5 mm stereo socket
- TOSLINK cable

Components



① On/off button

② LED status indicator
(green, blue, orange)

③ Volume buttons

④ TOSLINK connection

⑤ Connection for standard
line-in devices with
3.5 mm audio jack

⑥ USB port
for power supply

Getting started

Connecting to power supply

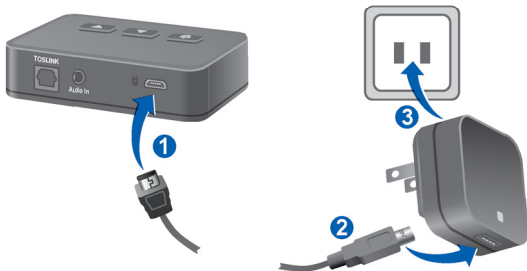


NOTICE

Please make sure that the power plug is easily accessible to remove it from power supply if necessary.

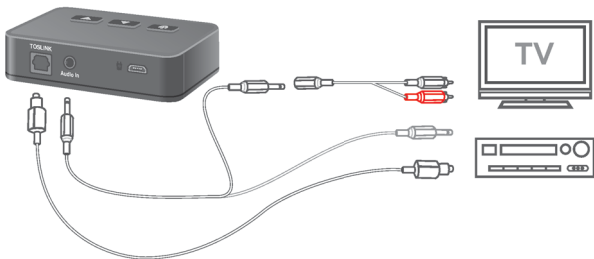
Only use the USB power cable and power adapter that came with the device. Select the adapter that is used in your country.

- ▶ Connect the micro USB side of the USB power cable to the transmitter **1**.
- ▶ Connect the other side of the USB power cable to the power plug **2**.
- ▶ Connect the power plug to the power supply **3**.



Connecting to audio devices

Use the supplied cables and adapters.



Further information:

- When using the TOSLINK cable:
 - Before connecting the cable, remove the protection caps from the TOSLINK cable plugs.
 - To prevent the TOSLINK cable from breaking, do not forcefully bend it.
 - Set the output format of the TV or audio device to "uncompressed PCM audio" (PCM = pulse-code modulation).
Compressed audio format (like surround sound) is not supported by the transmitter. This will be indicated by a flashing orange LED ■■■■.
- If the two inputs of the transmitter are connected to different audio devices, the device connected via TOSLINK cable has the higher priority and the audio

signal of this device will be streamed to your hearing instruments. The audio signal of the other device will not be streamed.


Pairing the transmitter

The remote control for your hearing instruments has to be paired once with the transmitter.

- ▶ Follow the instructions in the remote control's user guide.

Daily use



Using the transmitter

- ▶ Check if the green LED shines  (transmitter is turned on and ready for audio streaming).


If the green LED is off, press  to turn the transmitter on.

- ▶ To start audio streaming, use the remote control for your hearing instruments: Set up the remote control for your hearing instruments so that audio streaming with our transmitters is active. Follow the instructions in the remote control's user guide.

When the blue LED shines , audio streaming is active.

- ▶ To adjust the volume of the streamed audio signal, press  (volume up) or  (volume down) on the transmitter.

You can also adjust the volume with the remote control for your hearing instruments or with the controls of your hearing instruments.

If you intend not to use the transmitter for a longer period of time, you can turn it off by pressing .

LED status indication



Green LED on

➤ Transmitter is on. It is ready for pairing or audio streaming.



Green LED off

➤ Transmitter is off.

The blue LED shows the status of the Bluetooth connection between transmitter and remote control for your hearing instruments.



Blue LED on

➤ Audio streaming is active.



Blue LED off

➤ No audio streaming is active.

The orange LED shows the status of the TOSLINK connection.



Steady orange light

➤ TOSLINK cable is connected and audio signal in the required format is available. Refer to section "Connecting to audio devices".



Flashing

➤ TOSLINK cable is connected, but the audio signal has the wrong format. Refer to section "Connecting to audio devices".



Orange LED off

➤ No TOSLINK cable is connected or the cable is not connected properly.
➤ TV or audio device is switched off.
➤ TOSLINK cable is broken.

Important safety information

Personal safety



WARNING

Choking hazard!

Your device contains small parts which can be swallowed.

- ▶ Keep hearing instruments, batteries and accessories out of reach of children and mentally disabled persons.
- ▶ If parts have been swallowed consult a physician or hospital immediately.



WARNING

Risk of electrical shock!

- ▶ Do not use obviously damaged devices and return them to point of sale.



WARNING

Note that any unauthorized changes to the product may cause damage to the product or cause injury.

- ▶ Use only approved parts and accessories. Ask your Hearing Care Professional for support.

**WARNING**

Risk of electric shock!

- ▶ Connect audio input only to a device conforming to IEC 60065, the IEC-Norm for audio, video and other electronic devices.

**WARNING**

Interference with implantable devices

- ▶ The device can be used with all electronic implants that comply with the ANSI/AAMI/ISO 14117:2012 Electromagnetic compatibility standard for human implants.
- ▶ In case your implant does not comply with the ANSI/AAMI/ISO 14117:2012 standard, consult the manufacturer of your implantable device for information about the risk of disturbance.

**WARNING**

This device may interfere with measuring and electronic equipment.

- ▶ Do not use your device on airplanes or areas where sensitive or life-supporting electronic equipment is used.

**WARNING**

Risk of explosion!

- ▶ Do not use your device in explosive atmospheres (e. g. in mining areas).

Product safety



NOTICE

- ▶ Protect your devices from extreme heat. Do not expose them to direct sunlight.



NOTICE

- ▶ Protect your devices from high humidity.



NOTICE

- ▶ Do not dry your devices in the microwave oven.



NOTICE

Different types of strong radiation, e. g. during X-ray or MRI head examinations, may damage devices.

- ▶ Do not use the devices during these or similar procedures.

Weaker radiation, e. g. from radio equipment or airport security, does not damage the devices.



In some countries restrictions for the usage of wireless equipment exist.

- ▶ Refer to local authorities for further information.


**NOTICE**


Your hearing instruments are designed to comply with international standards on electromagnetic compatibility but interference with nearby electronic devices could occur. In this case, move away from the source of interference.


Important information

Explanation of symbols


Symbols used in this document

 Points out a situation that could lead to serious, moderate, or minor injuries.


 Indicates possible property damage.


 Advice and tips on how to handle your device better.


Symbols on the device or packaging

 CE compliance label, confirms compliance with certain European Directives, refer to section "Conformance information".

 EMC and radio communications compliance label Australia, refer to section "Conformance information".

 Indicates the legal manufacturer of the device.


 Do not dispose of the device with general domestic waste. Read more in section "Disposal information".

 Read and follow the instructions in the user guide.

Maintenance and care



NOTICE

- ▶ Do not put your device in water!
 - ▶ Do not clean your device with alcohol or benzene.
- 
- ▶ Clean the device as necessary with a soft tissue.
 - ▶ Avoid abrasive cleaning liquids with additives such as citric acids, ammonia, etc.

Disposal information

Recycle devices, accessories and packaging according to local regulations.

Conformance information

The CE mark indicates conformity with the following European directives:

- 2014/30/EU concerning electromagnetic compatibility
- 2014/35/EU concerning electrical equipment designed for use within certain voltage limits
- 2014/53/EU (RED) concerning radio equipment
- 2011/65/EU RoHS concerning the restriction of hazardous substances

Wireless functionality

FCC: QWOB8Z869

IC: 4460A-B8Z869

FCC and ISED compliance information can be found on the back of the device.

The ACMA compliance mark  indicates conformity with the electromagnetic interference standards set by the Australian Communications and Media Authority (ACMA).

Devices with the FCC marking comply with the standards of the FCC regarding electromagnetic interference.

This Class B digital apparatus complies with Canadian ICES-003.

This device complies with Part 15 of the FCC Rules and with ISED's licence-exempt RSSs.

Operation is subject to the following two conditions:

- This device may not cause harmful interference, and
- this device must accept any interference received, including interference that may cause undesired operation.

This equipment has been tested and found to comply with the limits for a Class B digital device, pursuant to Part 15 of the FCC Rules. These limits are designed to provide reasonable protection against harmful interference

in a residential installation. This equipment generates, uses and can radiate radio frequency energy and, if not installed and used in accordance with the instructions, may cause harmful interference to radio communications. However, there is no guarantee that interference will not occur in a particular installation. If this equipment does cause harmful interference to radio or television reception, which can be determined by turning the equipment off and on, the user is encouraged to try to correct the interference by one or more of the following measures:

- Reorient or relocate the receiving antenna.
- Increase the separation between the equipment and receiver.
- Connect the equipment to an outlet on a circuit different from that to which the receiver is connected.
- Consult the dealer or an experienced radio/TV technician for help.

FCC caution: Any changes or modifications not expressly approved by the party responsible for compliance could void the user's authority to operate this equipment.

This transmitter must not be co-located or operating in conjunction with any other antenna or transmitter.

Radiation exposure statements

This equipment complies with FCC and ISED radiation exposure limits set forth for an uncontrolled environment. This equipment should be installed and operated with a minimum distance of 20 cm between the radiator and your body.

Bluetooth radio frequency band

All channels supported from 2402 MHz to 2480 MHz with channel centers at every 1 MHz (2402 MHz, ..., 2479 MHz, 2480 MHz) i.e. 79 channels.

Risk mitigations (for internal use only)

Bluetooth radio frequency band.....	19
FCC/ISED statement for mobile device usage (> 20cm/low power).....	19
Intended Use	3
M06 audio input IEC 60065.....	12
M11 explosion device	12
M15, M210 choking ACC.....	11
M20_1/4 heat ACC	13
M20_2/4 humidity ACC.....	13
M20_3/4 microwave ACC	13
M20_4/4 Xray ACC.....	13
M23 wireless interference.....	14
M25_1/2 interference with implants from RA V30 only easyTek and transmitter.....	12
M25_2/2 interference with measuring equipment from RA V31	12
M29 recycle device.....	16
M60 turning on/off.....	8
M92, M228 damaged device ACC with power supply	11
M103 cleaning	16
M110 unauthorized modifications.....	11

 **Legal Manufacturer**

Signia GmbH
Henri-Dunant-Strasse 100
91058 Erlangen
Germany
Phone +49 9131 308 0

Manufactured by Signia GmbH
under Trademark License of Siemens AG.

Document No. 02992-99T##-#### ##
Order/Item No. ### ### ##
Master Rev01, 06.2016
© Signia GmbH, ##.2016



www.signia-hearing.com