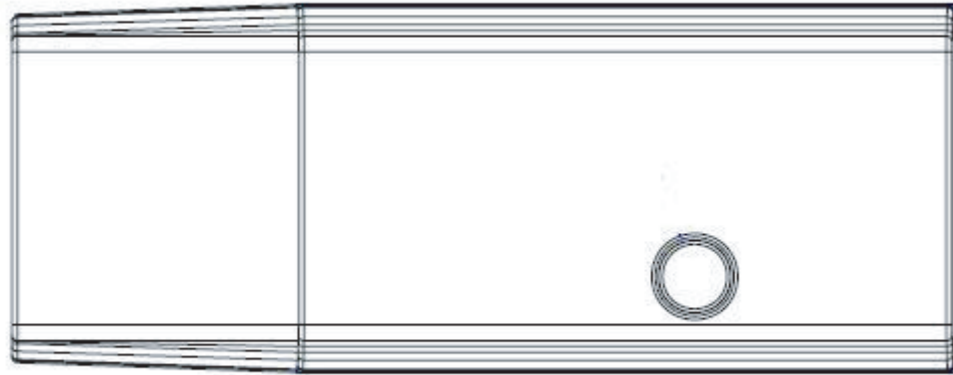


# BTD-320

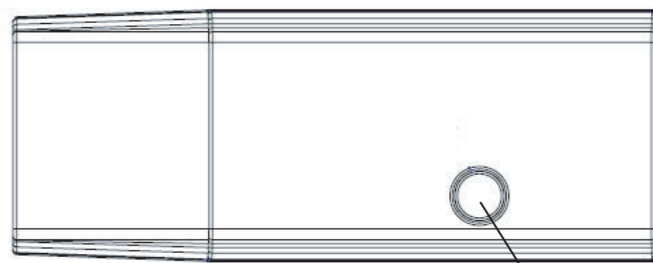
## User's Manual



### Product Features:

- Enables VoIP and music streaming to any Mono or Stereo Bluetooth Headset .
- Plug and Play device that works with Windows 2000/XP/Vista .
- Compatible Bluetooth specification V2.1 .
- Supports HFP , HSP , A2DP and AVRCP .
- Supports 4 pin code 0000,1234,6666 and 8888 .

### Outline:



Pairing button & LED indicator

### Pairing BTD-320 and Bluetooth Headset:

1. Please Insert BTD-320 into USB Port on PC.
2. Ensure your Bluetooth headset is in pairing mode and headset's pin code is identical to anyone among the following numbers : 0000,1234,6666 or 8888.
3. Press the pairing button then release , BTD-320 will enter pairing mode ,The LED indicator will flash red and blue.
4. When the LED indicator on BTD-320 goes to flash blue light by every 6 sec (or every 2 sec, if your Bluetooth headset supports A2DP ), the headset and BTD-320 are paired.

### LED indicator list:

| BTD-320 State               | LED Indicator                                  |
|-----------------------------|--|
| Standby                     | Blue LED on 2 sec and off 1 sec repeatedly.    |
| Pairing mode                | Blue and red LED flash alternative repeatedly. |
| Connecting state            | Blue LED flashes rapidly .                     |
| HFP/HSP connected           | Blue LED flashes every 6 sec .                 |
| A2DP( or A2DP&HFP)connected | Blue LED flashes every 2 sec .                 |

### Federal Communication Commission Interference Statement

This equipment has been tested and found to comply with the limits for a Class B digital device, pursuant to Part 15 of the FCC Rules. These limits are designed to provide reasonable protection against harmful interference in a residential installation. This equipment generates, uses and can radiate radio frequency energy and, if not installed and used in accordance with the instructions, may cause harmful interference to radio communications. However, there is no guarantee that interference will not occur in a particular installation. If this equipment does cause harmful interference to radio or television reception, which can be determined by turning the equipment off and on, the user is encouraged to try to correct the interference by one of the following measures:

- Reorient or relocate the receiving antenna.
- Increase the separation between the equipment and receiver.
- Connect the equipment into an outlet on a circuit different from that to which the receiver is connected.
- Consult the dealer or an experienced radio/TV technician for help.

FCC Caution: Any changes or modifications not expressly approved by the party responsible for compliance could void the user's authority to operate this equipment.

This device complies with Part 15 of the FCC Rules. Operation is subject to the following two conditions: (1) This device may not cause harmful interference, and (2) this device must accept any interference received, including interference that may cause undesired operation.

This equipment complies with FCC RF radiation exposure limits set forth for an uncontrolled environment. To maintain compliance with FCC RF exposure compliance requirements, please avoid direct contact to the transmitting antenna during transmitting.