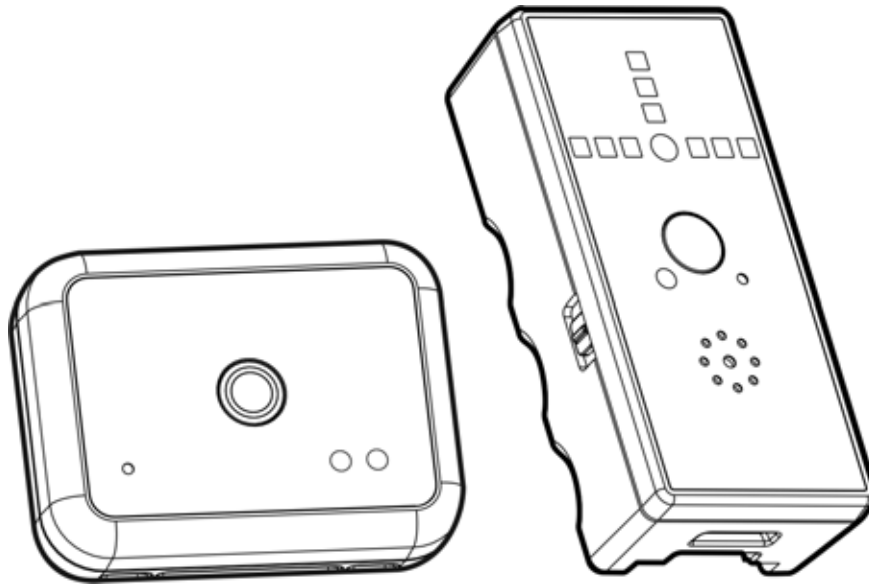


Kid Finder

User Manual



Be sure to carefully read this User's Manual first for the proper use of the Kid Finder and keep it for future reference.

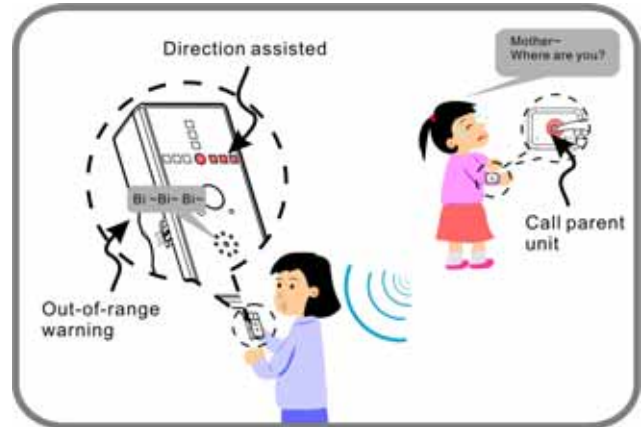
Information in this document is subject to change without notice. No part of this document may be reproduced or transmitted in any form or by any means, electronic or mechanical, for any purpose, without the express written prior permission of the seller.

The seller provides this document without warranty, or condition of any kind. The seller may make improvements or change in the product described in this documentation at any time.

Other product and company name herein may be the trademarks of their respective owners.

Introduction of Kid Finder

The Kid Finder is designed to help parent or guardian to take better care of a child, simply set the warning distance, put on the child unit, whenever the child has moved outside the distance, the parent unit will trigger an alert buzzer, and show you the direction (assisted) toward the child — Simple, Practical and Affordable.



Features

- Out-of-range warning.
- Assisted direction toward the child unit.
- Call parent unit from child unit.

Package Contents

- Kid Finder-Parent unit *1
- Kid Finder-Child unit *1
- AAA Batteries *4
- Neck lanyard (option) *1
- Watchstrap (option) *1
- User manual *1

Certification

EU DECLARATION OF CONFORMITY

This product is carrying the CE-Mark in accordance with the related European Directives.



FEDERAL COMMUNICATIONS COMMISSION

This device complies with Part 15 of the FCC Rules. Operation is subject to the following two conditions:(1) this device may not cause harmful interference, and (2) this device must accept any interference received, including interference that may cause undesired operation.

NOTE

This equipment has been tested and found to comply with the limits for a Class B digital device, pursuant to Part 15 of the FCC Rules. These limits are designed to provide reasonable protection against harmful interference in a residential installation. This equipment generates, uses and can radiated radio frequency energy and, if not installed and used in accordance with the instructions, may cause harmful interference to radio communications. However, there is no guarantee that interference will not occur in a particular installation. If this equipment does cause harmful interference to radio or television reception, which can be determined by turning the equipment off and on, the user is encouraged to try to correct the interference by one or more of the following measures:

- Reorient or relocate the receiving antenna.
- Increase the separation between the equipment and receiver.
- Connect the equipment into an outlet on a circuit different from that to which the receiver is connected.
- Consult the dealer or an experienced radio/TV technician for help.

Changes or modifications not expressly approved by the party responsible for compliance could void the user's authority to operate the equipment.

This device and its antenna(s) must not be co-located or operating in conjunction with any other antenna or transmitter.

Parts Description

The Kid Finder consists of two primary components: Parent unit (Fig. 1) and Child unit (Fig.2)

Fig. 1 Parent unit

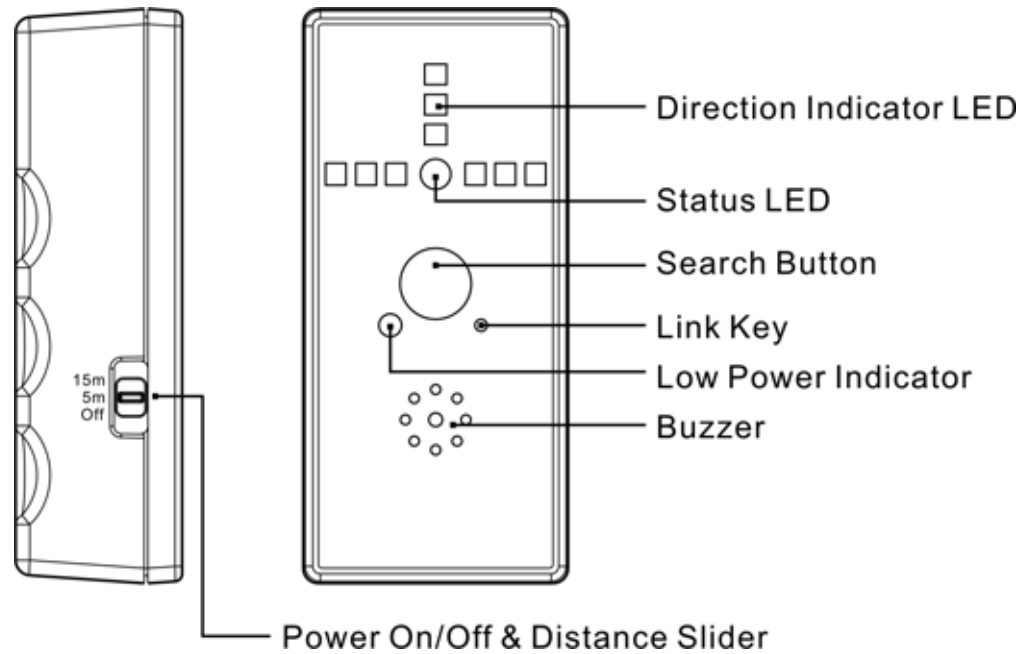
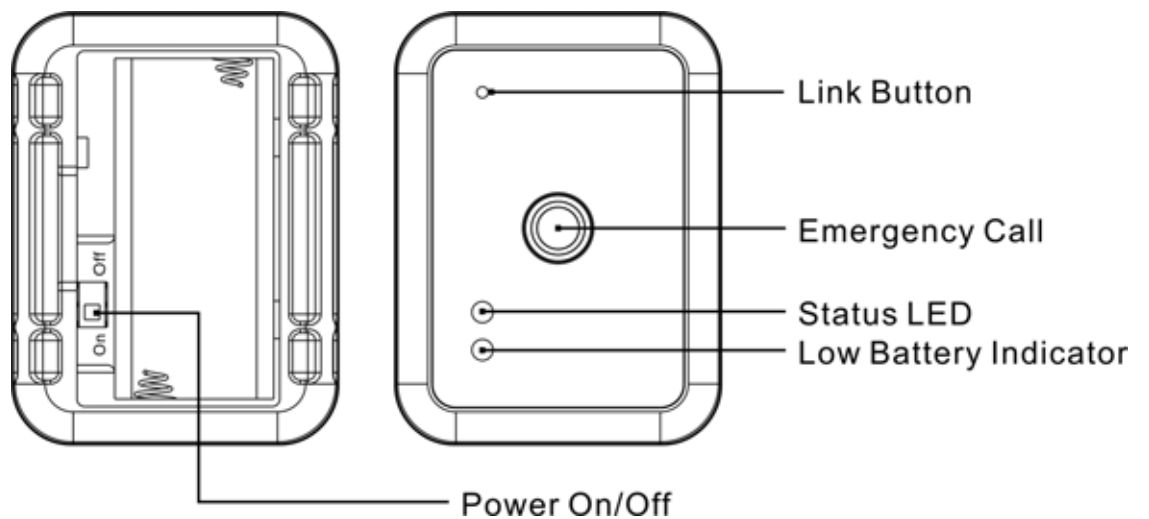
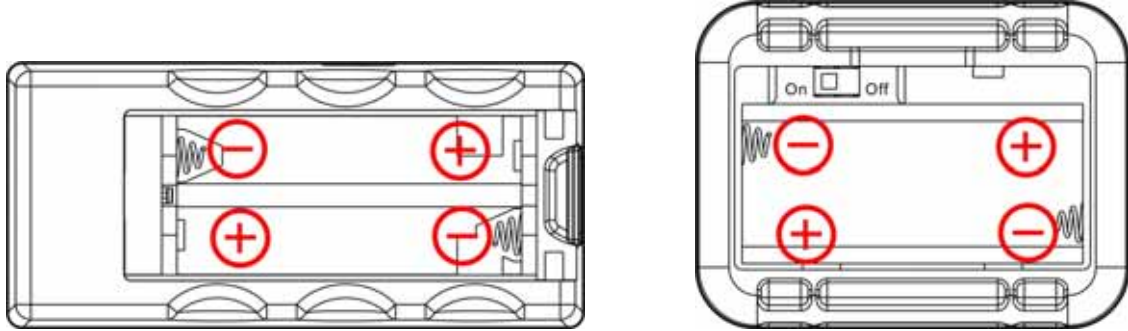


Fig. 2 Child unit

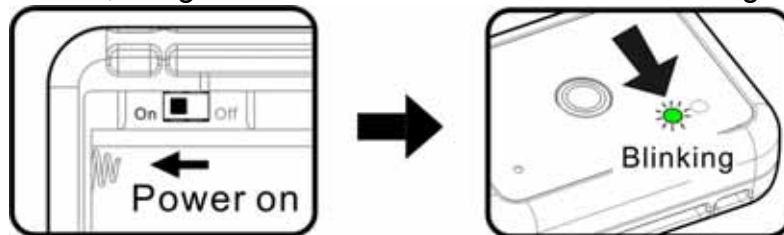


How to use Kid Finder

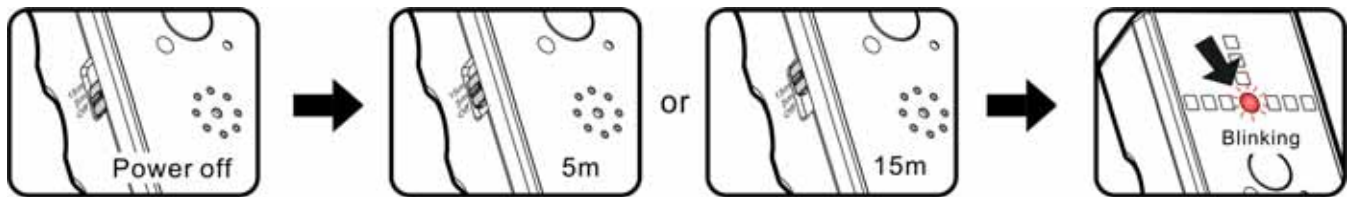
1. Insert the AAA batteries into the battery compartment of the parent unit and child unit.



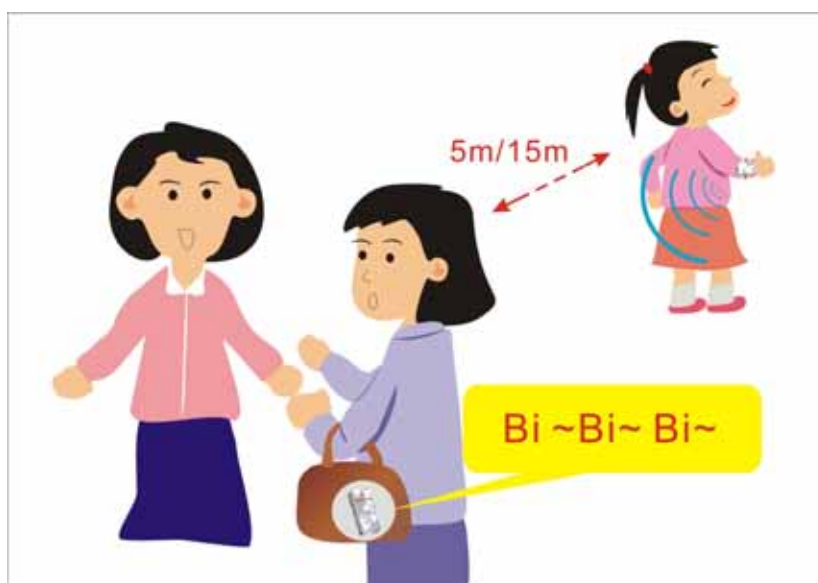
2. Switch on the child unit, the green LED of the child unit starts blinking.



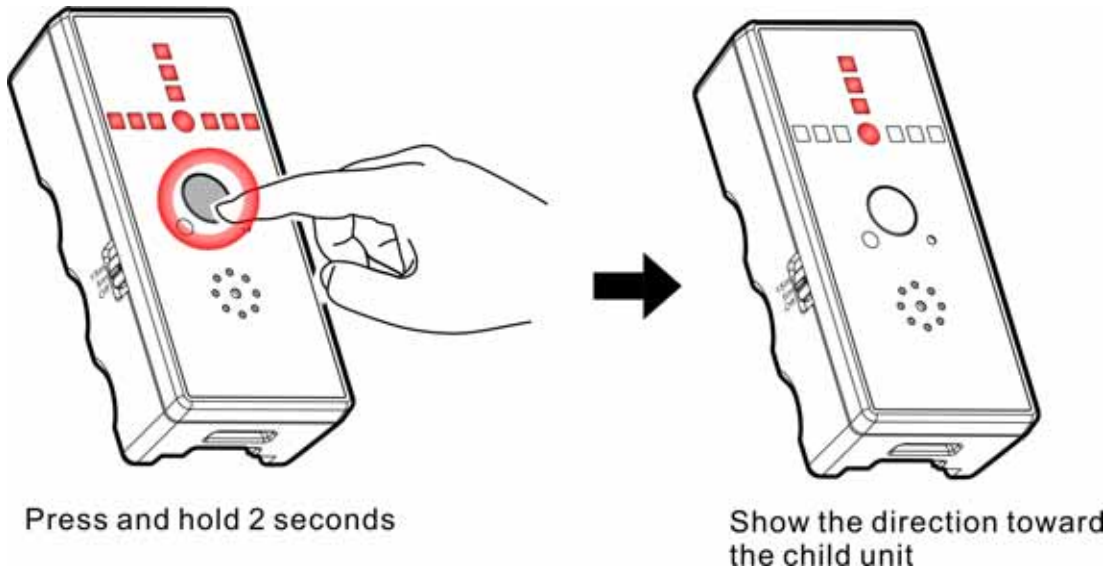
3. Push up the slider on the parent unit to the desired distance, the red LED starts blinking.



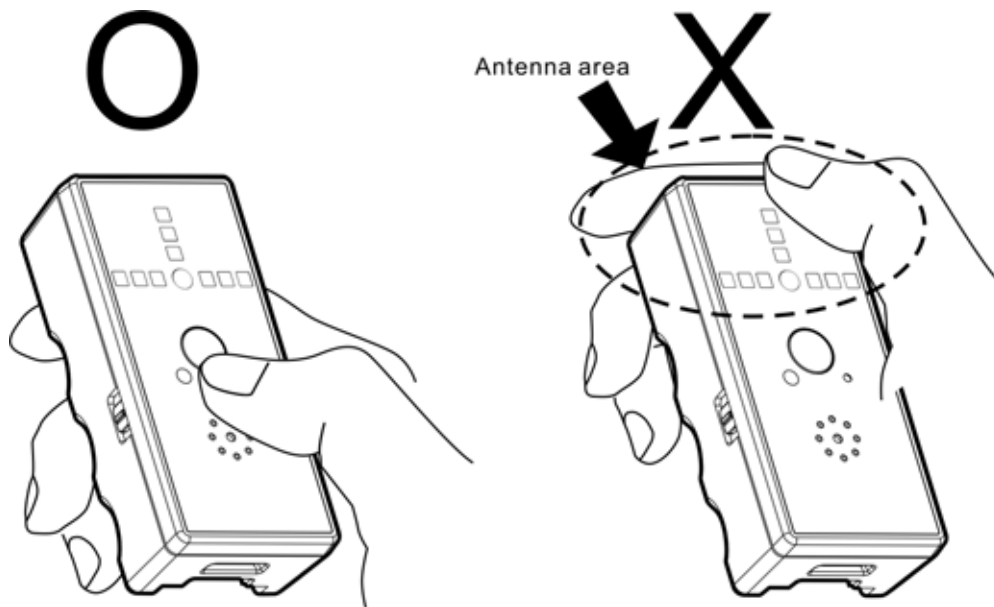
4. Put the child unit on the child, whenever the child unit moves out of the range you set, the parent unit will alert you with a buzzer sound.



- Press and hold the search button for 2 seconds after the buzzer sounded, and then release the search button, the parent unit will show the direction (assisted) toward the child unit.



Note: To achieve the best performance, please hold the parent unit correctly.



- The direction (assisted) is displayed by 3 respective LED, the number of LED's illuminated would indicate the radio signal strength received from the child unit (see the table below).

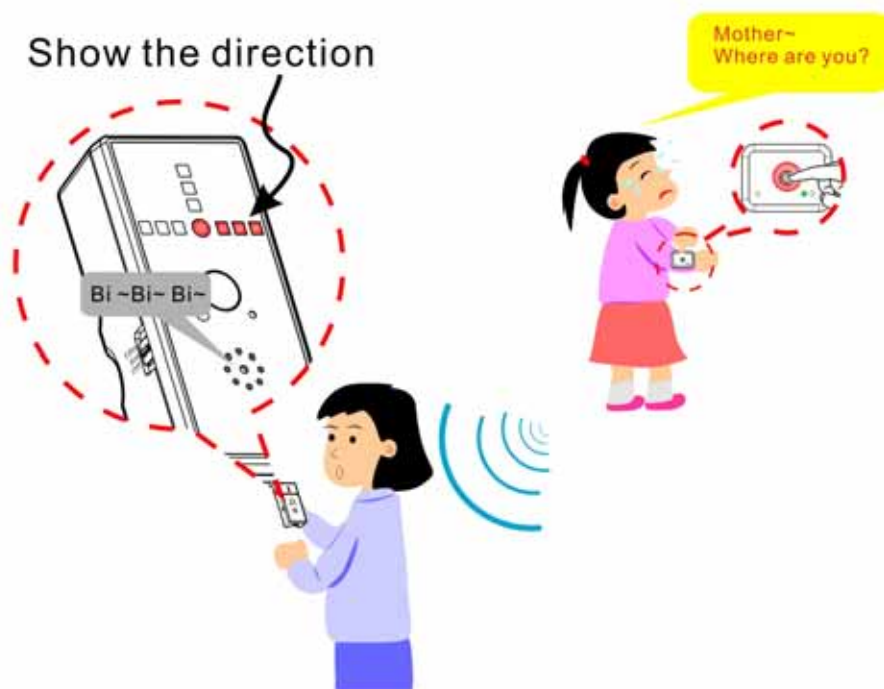
Signal Strength	Out of Range	Very Weak	Weak	Mediate	Strong	Very Strong
LED Display						

Note: the accuracy of direction may vary depending on the usage environment.

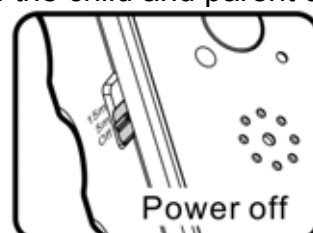
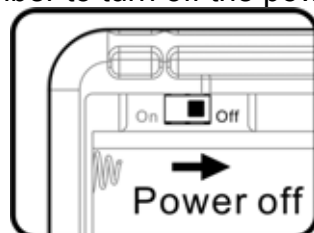
7. All 10 direction LEDs will be lit when the parent unit is around 2 meters close to the child unit (depend on environment).



8. Emergency call: the child unit is able to call the parent unit actively while the two units are activated and connected, simply click the emergency button on the child unit, the parent unit's buzzer sounded. Click the search button to silence the buzzer and the parent unit will resume its original mode i.e. stand-by mode or search mode.



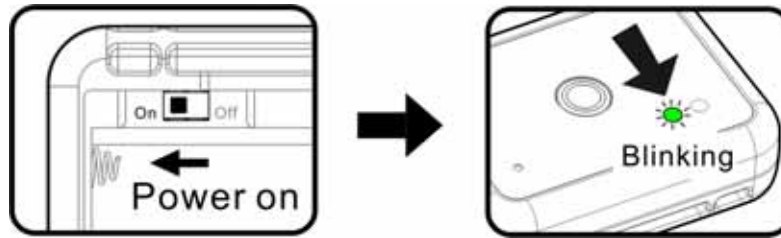
Note: please remember to turn off the power of the child and parent units when not in use!



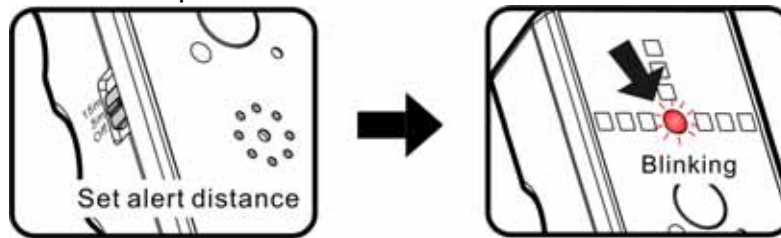
How to pair the child unit and the parent unit

Note: Implement ID change ONLY when serious RF interference.

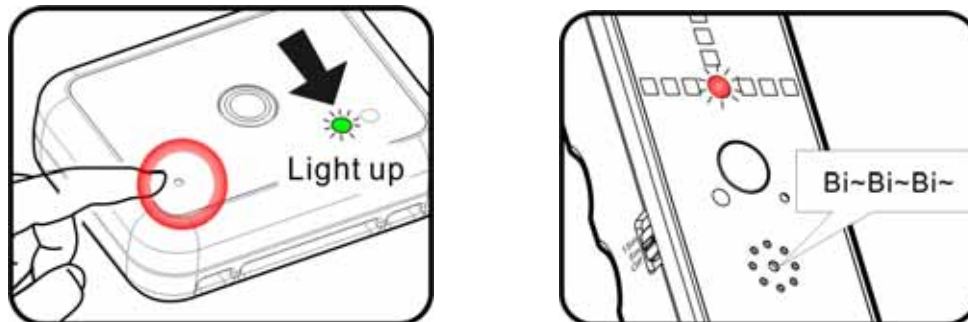
1. Switch on the child unit.



2. Set the alert distance of the parent unit.

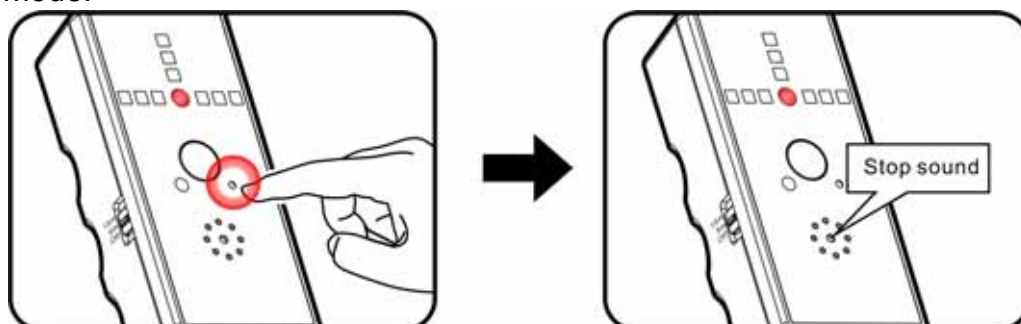


3. Press and hold the child unit's Link button for 1 second till the green LED lights up, the child unit stays in pairing mode for **15 seconds**, in the meantime, the buzzer of parent unit sounded.



Press the child unit's Link button for 1 sec.

4. Press and hold the parent unit's Link button for 1 second till the buzzer stop sounding, the pairing is completed, and the parent unit will resume its original mode i.e. stand-by mode or search mode.



Press the parent unit's Link button for 1 sec.

Specifications

	Parent unit (Receiver)	Child unit (Transmitter)
Frequency	2400MHz~2483MHz	
Channel number	4 multi channels and 65535 ID per channel	
Data rate	250 Kbps	
Wireless range	300 feet (90m) in open space; 100 feet(30m) indoors	
Frequency tolerance	+/-25ppm	
Sensitivity	-85dBm	
Out of range warning	Buzzer	
Search direction assisted	10 LEDs	
Power Consumption	Working:3mA (average) Standby: 3mA (average) Search: 35mA	Working:3mA (average)
Power Type	AAA alkaline battery *2	AAA alkaline battery *2
Battery life (continual use)	About 350 hours	About 350 hours
Dimensions (W x H x D)	76*35*22 mm	57*43*16.5mm
Weight (include batteries)	Approx. 52g	Approx. 43g

Troubleshooting

1. The parent unit's buzzer keeps on sounding after you set the distance.

- Make sure the child unit is turned on.
- Check the battery power of child unit
- The child unit is out of range.
- Pair the parent unit and child unit again.

2. The parent unit fails to function. (the red LED does not blink)

- Check the battery power of parent unit.
- Pair the parent unit and child unit again.