

Wireless Touch Presenter E (ExpressCard/34 Form Factor)

User's Guide

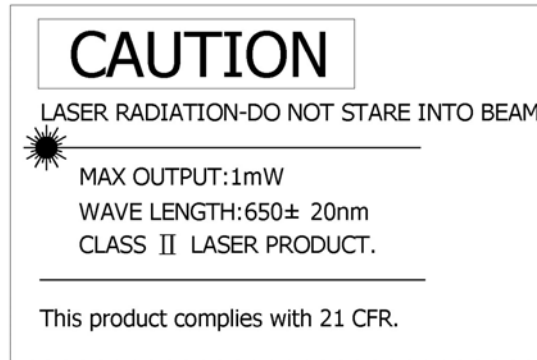
Be sure to carefully read this User's Guide first for the proper use of the Wireless Touch Presenter E and keep it for future reference.

Information in this document is subject to change without notice. No part of this document may be reproduced or transmitted in any form or by any means, electronic or mechanical, for any purpose, without the express written prior permission of the seller.

The seller provides this document without warranty, or condition of any kind. The seller may make improvements or change in the product described in this documentation at any time.

Other product and company name herein may be the trademarks of their respective owners.

IMPORTANT SAFETY AND HEALTH INFORMATION



WARNING! RISK OF INJURY!

Laser beam can cause permanent damage to eyes. Do not look into the laser beam or shine the laser beam into your eyes, other peoples' eyes, or pet's eyes.

WARNING! RISK OF INJURY!

Keep this device away from Children. This is a working tool, not a toy or entertainment device. It should only be used by adults.

FEDERAL COMMUNICATIONS COMMISSION

This device complies with Part 15 of the FCC Rules. Operation is subject to the following two conditions:(1) this device may not cause harmful interference, and (2) this device must accept any interference received, including interference that may cause undesired operation.

NOTE

This equipment has been tested and found to comply with the limits for a Class B digital device, pursuant to Part 15 of the FCC Rules. These limits are designed to provide reasonable protection against harmful interference in a residential installation. This equipment generates, uses and can radiated radio frequency energy and, if not installed and used in accordance with the instructions, may cause harmful interference to radio communications. However, there is no guarantee that interference will not occur in a particular installation If this equipment does cause harmful interference to radio or television reception, which can be determined by turning the equipment off and on, the user is encouraged to try to correct the interference by one or more of the following measures:

- Reorient or relocate the receiving antenna.
- Increase the separation between the equipment and receiver.
- Connect the equipment into an outlet on a circuit different from that to which the receiver is connected.
- Consult the dealer or an experienced radio/TV technician for help.

Changes or modifications not expressly approved by the party responsible for compliance could void the user's authority to operate the equipment.

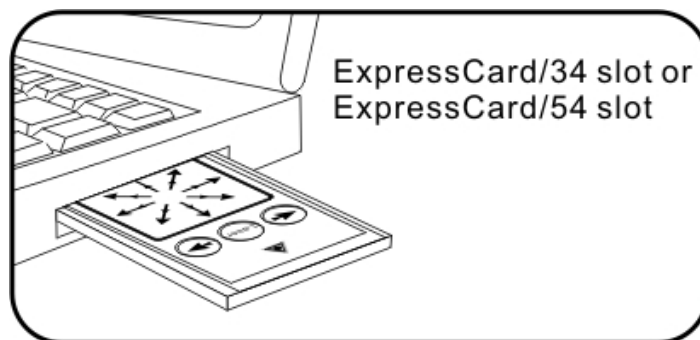
This device and its antenna(s) must not be co-located or operating in conjunction with any other antenna or transmitter.

■ **Introduction of Wireless Touch Presenter E**

2.4GHz of wireless technology, the Wireless Touch Presenter E allows you to control presentations from up to 130ft (40 meters) away. It offers touch pad capability and PowerPoint presentation control with a built-in laser pointer.

The Wireless Touch Presenter E is designed exactly the form factor of ExpressCard™, its slim RF USB receiver fits onto the back of the presenter, so the Wireless Touch Presenter E can be easily stored in an ExpressCard slot, you always have your presenter with you when needed.

Remain in control of your presentation? All-in-one, requires no drivers, simply plug and play, the Wireless Touch Presenter E is the best choice for those on the go.



■ **What's included**

- Wireless Touch Presenter E (with USB receiver in the back) 1
- CR2032 Battery 1
- User's Guide 1

■ **System Requirements**

Windows® 2000/XP/Windows Vista™ PC with an available USB port
Presentation software: PowerPoint 2000 or later

Mac OS X v.10.3 or later with and available USB port
Presentation software: PowerPoint v. X for Mac OS X or later

■ **Parts Description**

Figure 1 Front View

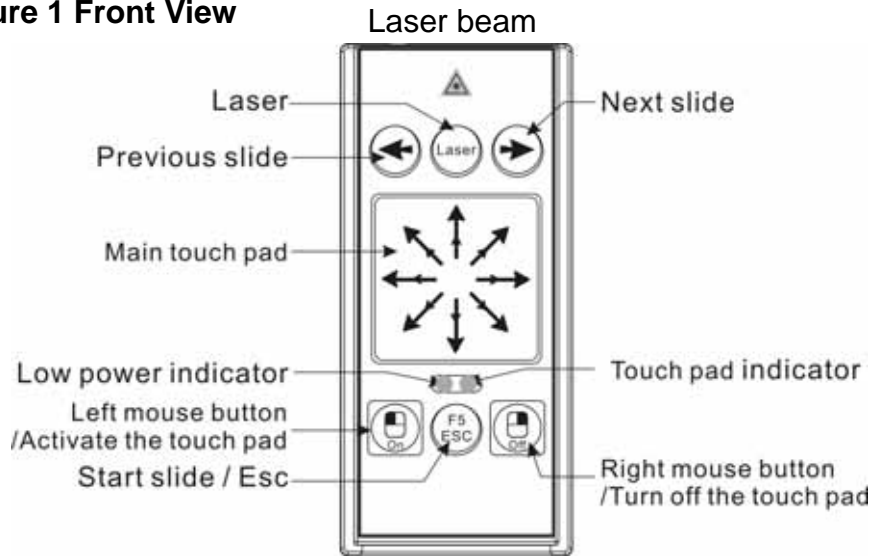


Figure 2 Rear View

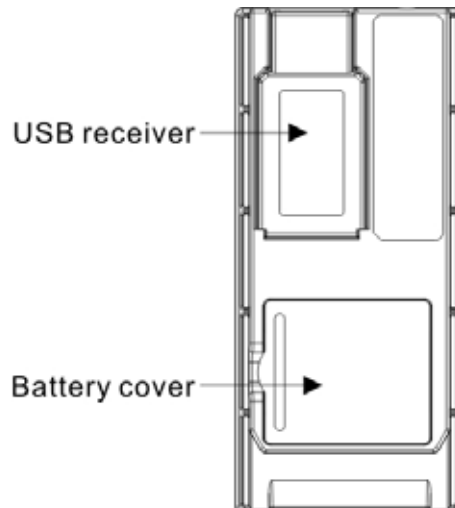
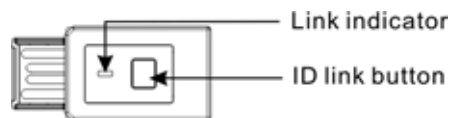
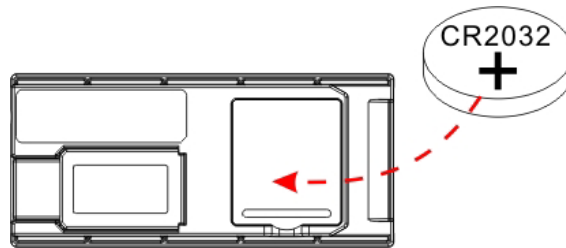


Figure 3 USB Receiver

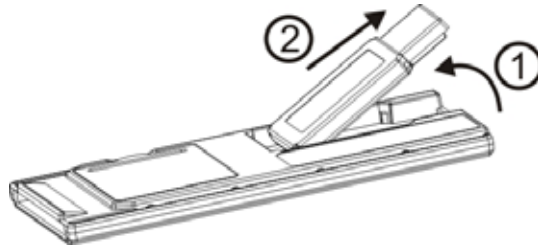


■ **Initial set up for the Wireless Touch Presenter E**

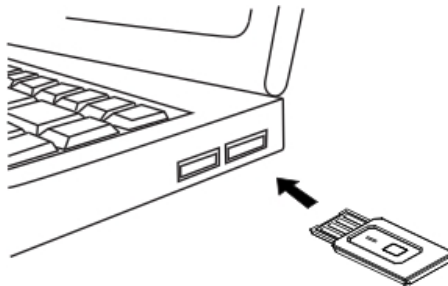
1) Installing the battery with the positive (+) side up.



2) Taking out the USB receiver



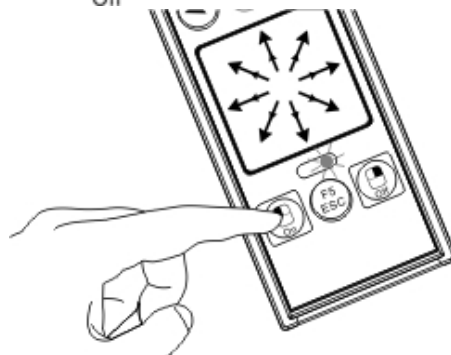
3) Connecting the USB receiver to your computer



Note: In case your Mac computer cannot identify the device when you plug in the USB receiver for the first time use, please follow the instructions below to solve this problem.

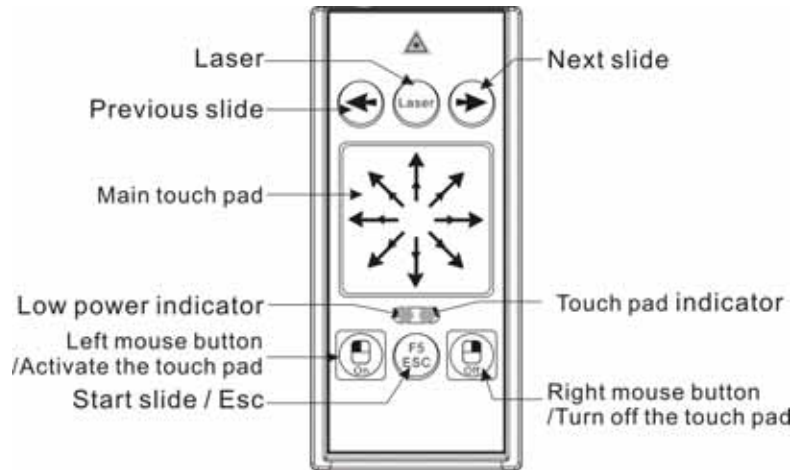
Connect the USB receiver to Mac computer Keyboard Setup Assistant Continue Identify Your Keyboard Press any key on the keyboard Select "Skip" Choose "ANSI" "Done"






4) Click the left mouse button  to activate the touch pad.





Note: The touch pad will enter sleep mode after 2 minutes of inactivity, click the left mouse button to awake the touch pad.


■ Operating the Wireless Touch Presenter E



	Function	How to operate
LASER	Laser pointer	Press to emit the laser beam.
F5 ESC	Start/Exit slide show	1. Click to start slide show. 2. Press for 1 second to exit slide show.
	Go to next slide	Press to go to next slide.
	Go to previous slide	Press to go to previous slide.
	Main touch pad	Use the touch pad to control the mouse cursor. Note: The touch pad will enter sleep mode after 2 minutes of inactivity, click the left mouse button to awake the touch pad.
	Activate the touch pad n / Left mouse butto	1. The touch pad will enter sleep mode after 2 minutes of inactivity, click the left mouse button to awake the touch pad. 2. Left mouse button.
	Turn off the touch pad / Right mouse button	1. Press for 2 seconds to turn off the touch pad.. 2. Right mouse button
Link ID	To change ID	Please see “How to pair Wireless Touch Presenter E” . Note: Implement ID change ONLY when serious RF interference causes the remote control malfunction.

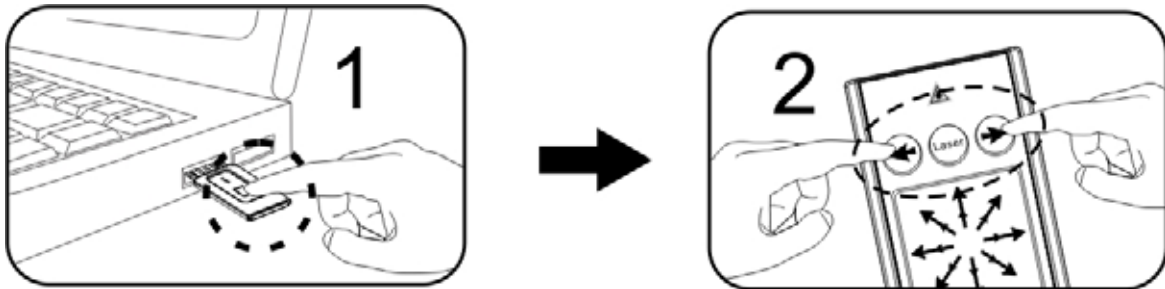
LED Indicator

LED	Function	Status
	Low Battery indicator	The red LED will light up when the battery power is running low, it is probably time to replace the battery.
	Touch pad indicator	Green LED blinks regularly: touch pad works normally. Green LED turns off: touch pad goes to sleep mode.

Note: Please remember to press the right mouse button  for 2 seconds to turn off the touch pad when the Presenter is not in use.

■ **How to pair the Wireless Touch Presenter E**

1. Click the “ID Link” button on the USB receiver first, the “Link indicator” lights up.
2. Press “→” and “←” buttons (on the Presenter) simultaneously for 3 seconds until the “Link indicator” on the USB receiver starts blinking, the pairing is completed.



■ **Product Specifications**

□ **System**

Frequency range: 2400~2483MHz (16 channels and 65535 ID per channel)

Remote range: Up to 130 feet (40 meters) line of sight

Operating voltage: 2.6V~3.3V

Power: CR2032 battery * 1

Power consumption: Working mode < 5mA

Saving mode < 10uA

Laser mode < 30mA

Output power: Under 1mW

□ **Physical Dimensions**

Size: 75(l) x 34(w) x 5(h) millimeters

Weight: Approx. 13.6 grams (with the receiver and battery)

□ **Environmental Requirements**

Temperature:

Operating: 0 (32)~60 (140)

Non-operation: -10 (14)~65 (149)

Humidity(non-condensing):

Operating: 10%~85% RH

Non-operating: 10%~95% RH

Note: Design and specifications are subject to change and improvement without notice.

Patent Pending

