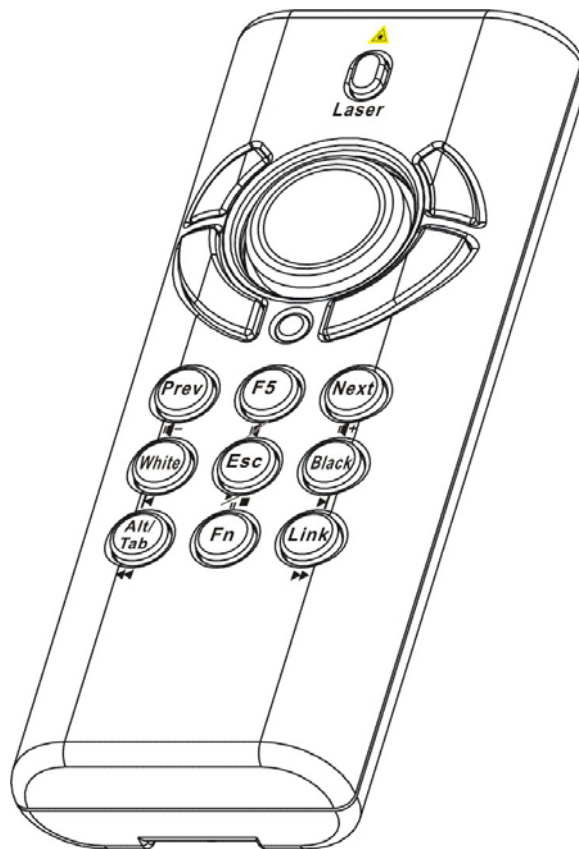


4-in-1 Wireless Media Presenter (2.4GHz)

User's Manual



Be sure to carefully read this User's Manual first for the proper use of the 4-in-1 Wireless Media Presenter and keep it for future reference.

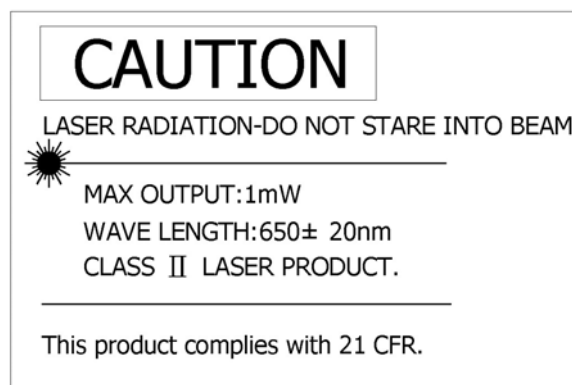
Information in this document is subject to change without notice. No part of this document may be reproduced or transmitted in any form or by any means, electronic or mechanical, for any purpose, without the express written prior permission of the seller.

The seller provides this document without warranty, or condition of any kind. The seller may make improvements or change in the product described in this documentation at any time.

Other product and company name herein may be the trademarks of their respective owners.

© 2005 All rights reserved.

IMPORTANT SAFETY AND HEALTH INFORMATION



WARNING! RISK OF INJURY!

Laser beam can cause permanent damage to eyes. Do not look into the laser beam or shine the laser beam into your eyes, other peoples' eyes, or pet's eyes.

WARNING! RISK OF INJURY!

Keep this device away from Children. This is a working tool, not a toy or entertainment device. It should only be used by adults.

Trademarks:

Windows, Windows Vista, Windows Media, Microsoft and PowerPoint are registered trademarks of Microsoft Corporation.

iTunes is a registered trademarks of Apple Computer, Inc.

PowerDVD is a registered trademark of CyberLink Corp.

WinDVD is a registered trademark of InterVideo, Inc.

Other trademarks and registered trademarks not listed above may be used in this manual.

Table of Contents

Chapter 1 Introduction

- What's the benefits..... 4
- Equipment checklist..... 5
- System requirements..... 5

Chapter 2 Getting Started and Operation Mode

- Inserting the battery..... 6
- Connecting the USB receiver..... 6
- Opening PowerPoint..... 6
- Turning on the laser point..... 6
- Operation mode..... 6
- Take out/Put back the USB Receiver..... 7

Chapter 3 Using the 4-in-1 Wireless Presenter

- PowerPoint® Presentation Mode (Part I).....8
- PowerPoint® Presentation Mode (Part II).....9
- Multimedia Player Mode.....10

Chapter 4 Additional Information

- Specifications.....11
- Care and Maintenance.....11

Trouble Shooting.....12

Special remarks on using Multimedia Player function.....13

Chapter 1 Introduction

Thank you for choosing this **4-in-1 Wireless Media Presenter**
— “**Totally Control Your Presentation and PC Multimedia**”

■ *What's the benefits*

□ **4-in-1 multi-function**

This 4-in-1 Wireless Media Presenter combines the features of the PowerPoint Controls, Laser Pointer, Wireless Mouse and PC Multimedia Remote Control into one elegant device. Excellent 2.4GHz RF technology enables you to control the computer up to 100 feet (30 meters) away from the receiver (connected to the USB port), the laser pointer functions up to 130 feet (40 meters) from the target.

□ **Making your presentation easier and more successful**

When making presentation, with this 4-in-1 Wireless Media Presenter, you don't need to stand beside your notebook computer or have an additional person to assist you, nor do you need to aim at the USB receiver.

□ **Having your own way to your PC Multimedia**

When enjoying your PC multimedia, this 4-in-1 Wireless Media Presenter provides you with a single tool to manage your Windows Media Player or iTunes running on Windows®.

□ **Easy to use**

This 4-in-1 Wireless Media Presenter is a USB plug-and-play device with no additional software required. The laser beam safety switch protects people from unintentional laser beam into human eyes.

□ **Easy to carry**

The slim RF receiver integrated with the Presenter enables this product to be compact and easy to carry – especially convenient for business travelers.

■ ***Equipment Checklist***

Carefully unpack your 4-in-1 Wireless Media Presenter, and make sure you have all the following items:

- | | | |
|--------------------------|--|---|
| <input type="checkbox"/> | 4-in-1 Wireless Media Presenter | 1 |
| <input type="checkbox"/> | USB Receiver (attached in the back of Presenter) | 1 |
| <input type="checkbox"/> | AAA Batteries | 2 |
| <input type="checkbox"/> | User's Manual | 1 |

■ ***System Requirements***

Windows® 98SE/ME/2000/XP/Windows Vista™

An available USB port

Chapter 2 Getting Started and Operation Mode

■ *Inserting the batteries*

Open the battery cover in the product rear side and insert two AAA batteries.

■ *Connecting the USB receiver*

Take out the USB receiver in the back (please refer to page 7), label side down and plug it exactly into an USB port. Do as follows, depending on operating system:

□ **Windows® 2000/XP/Windows Vista™**

The operating system identifies the receiver as a “USB Human Interface Device” and begins installation automatically. Follow the instructions or messages on the screen to complete the installation.

□ **Windows® 98 SE/ME**

The system prompts you to insert the operating system CD-ROM. Follow the instructions on the screen to install the required drivers.

■ *Opening PowerPoint and other necessary files on your screen*

■ *Turning on the laser pointer*

Press “Fn” and “On/Off” button on the product front simultaneously till the Upper-left LED blinking in orange.

■ *Operation Mode*

There are two operation modes: One is 『PowerPoint Presentation Mode』, another is 『Multimedia Mode』, Default setting in 『PowerPoint Presentation Mode』. Please make sure you are on the right mode you want.

Note: There are 3 LED on the product front which combines 4 modes below:

1 **Orange LED blinks:** At PowerPoint mode and laser pointer is turned on.

2. **Blue LED blinks:** At Multimedia mode

3. **Red LED lights:** Light when battery power is low.

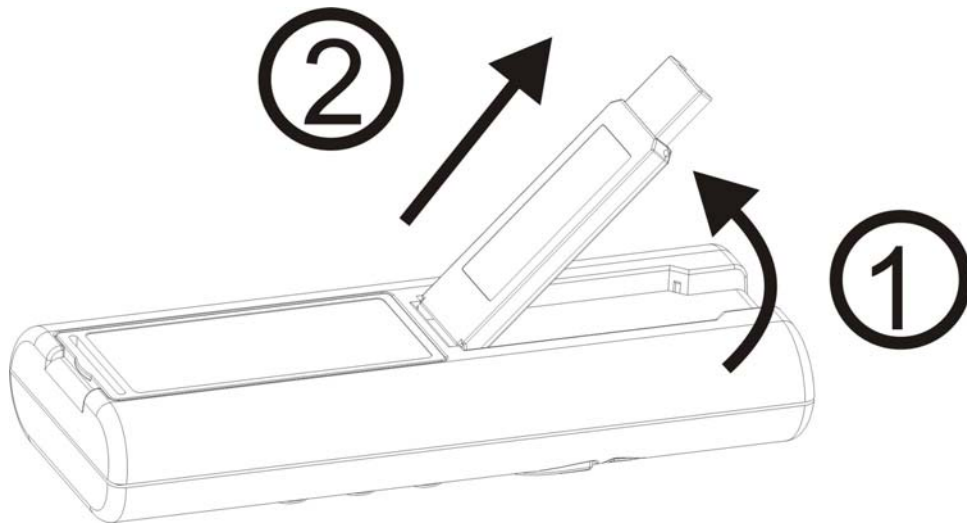
PS Please change to new batteries to have normal function.

4. **No LED blinks or lights:** At PowerPoint mode and laser pointer is not turned on.

■ **Take out the USB receiver**

Figure 1

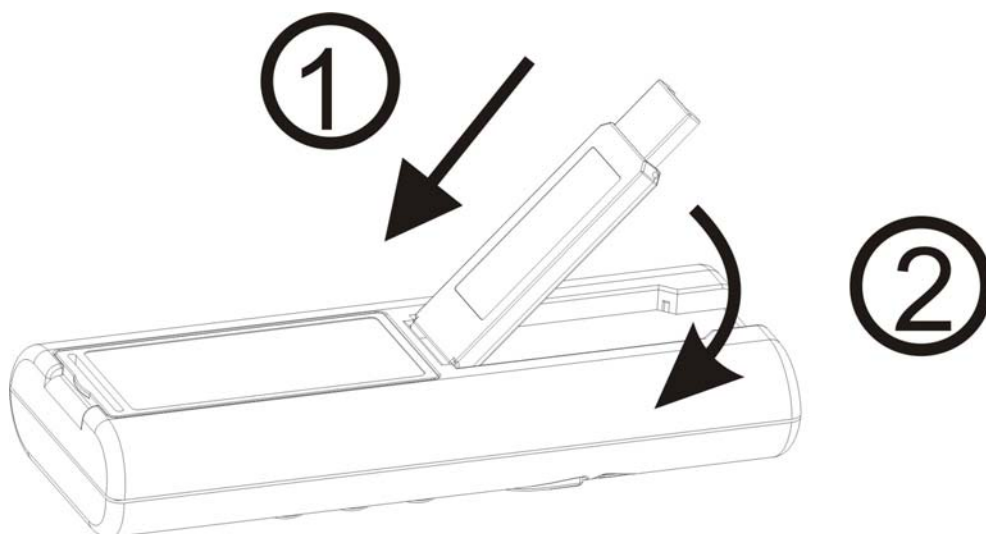
Pull up the USB receiver as the following figure and then take the USB receiver out from the compartment.



■ **Put back the USB receiver**

Figure 2

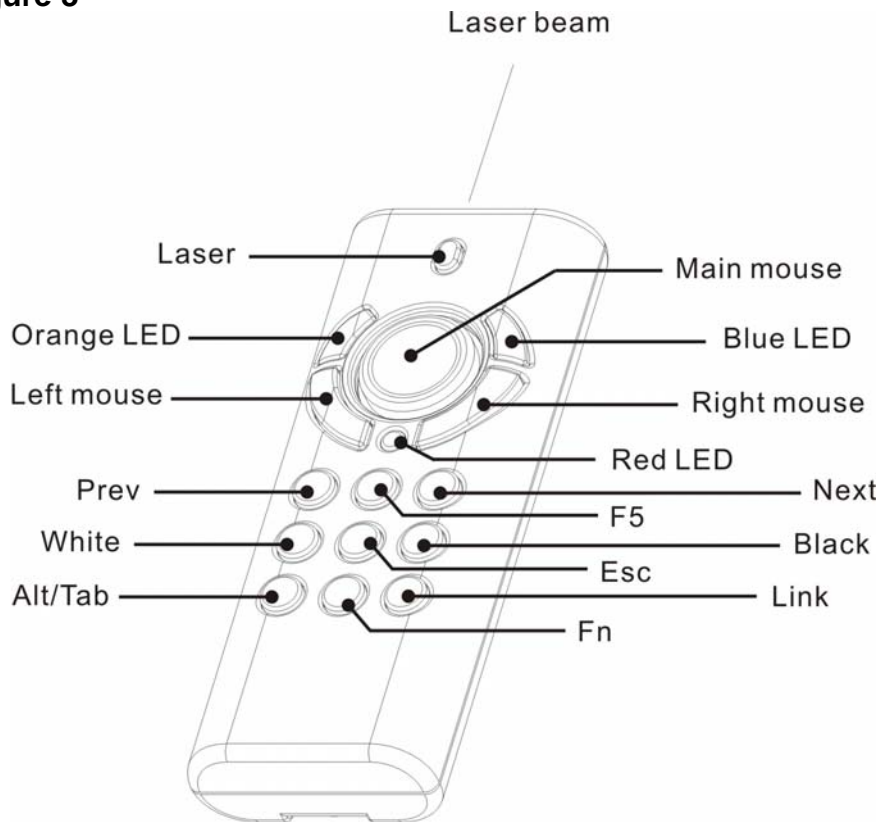
Insert the bottom of the USB receiver with the label side up and then press the USB receiver down to the compartment firmly.



Chapter 3 Using the 4-in-1 Wireless Media Presenter

■ PowerPoint Presentation Mode (Part I)

Figure 3

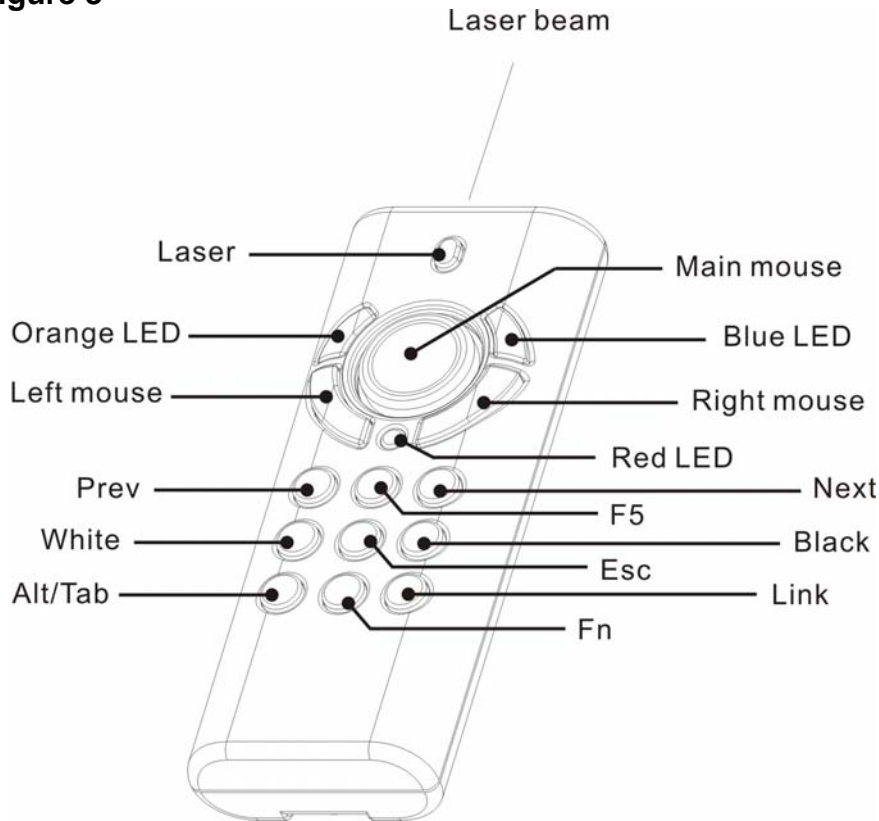


Print in key	Function description
Laser	<ol style="list-style-type: none"> 1. Press Fn and Laser keys simultaneously till Orange LED blinking in orange to turn on or off laser pointer 2. After turned on laser pointer, press Laser key to shoot the laser beam <p>Note : The laser will automatically shut off after 30 minutes idling time</p>
Orange LED	Regularly blinks when laser pointer is turned on
Red LED	Lights when battery power is detected lower than 2.5V Note : The control will still be available for a short time but suggest replacing new batteries soon
Mouse keys	Use main and left/right mouse keys as common mouse
F5	Click to start the slide show
Esc	Click to end the slide show
Next	Click to go to next slide
Prev	Click to go to previous slide
Black	Click to turn the presentation screen black; one more click to come back
White	Click to turn the presentation screen white; one more click to come back

(Please go to the **next page** for further indication at PowerPoint Presentation Mode)

■ **PowerPoint Presentation Mode (Part II)**

Figure 3



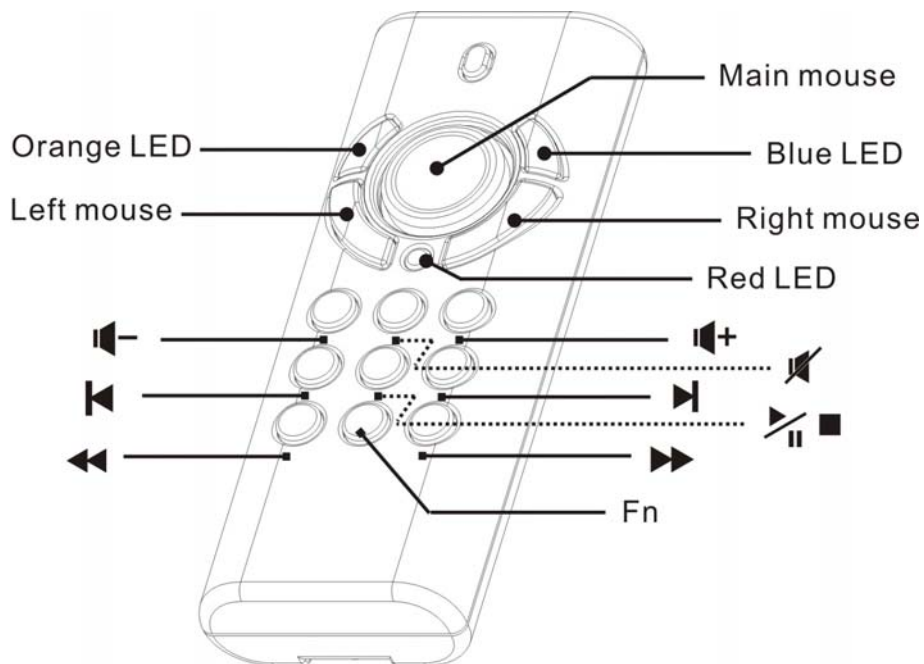
Print in key	Function description
Fn	<ul style="list-style-type: none"> — Mode change : Press and hold for 1 second and release to change modes between PowerPoint Presentation mode and Multimedia Player mode — Turn on or off laser pointer : Press Fn and Laser keys simultaneously till Orange LED blinking in orange to turn on or off laser pointer
Link (Use with Fn key)	<ol style="list-style-type: none"> 1. Click the Link key on the USB receiver until the LED on USB receiver lights up. 2. Press Fn and Link keys simultaneously until the LED on USB receiver blinks or 3 LEDs on product front blink in turn <p>Note: To implement ID change only when this product is interfered by other 2.4GHz device(s) or when 2 or more of this product are to be used at a range within 30 meters at the same time</p>
Alt/Tab (Use with Fn key)	<p>Press & hold Fn key and then press Alt/Tab key to choose the required file icon. Release both keys to open the required files. Use the same process to go back to PowerPoint slide</p>









Note: Please make sure you are on the right mode you want to use.

Chapter 3 Using the 4-in-1 Wireless Media Presenter

■ *Multimedia Player Mode (Note: Laser will be off at this mode)*

Figure 4



Print on case	Function description
Mouse keys	Use main and left/right mouse keys as common mouse
Blue LED	Regularly blinks when at Multimedia Player mode
Red LED	Lights when battery power is detected lower than 2.5V Note : The control will still be available for a short time but suggest replacing new batteries soon
	Click to start play; one more click to pause. Press and hold for 1 second to stop play
	Click to next chapter
	Click to previous chapter
	Click for fast forward Note: For DVD play control, the fast forward maybe able to choose forward speed
	Click for fast rewind Note: For DVD play control, the fast rewind maybe able to choose rewind speed
	Click to turn up volume
	Click to turn down volume
	Click to turn on mute function; one more click to turn off mute function
Fn	Press and hold for 1 second to change modes from Multimedia Player to PowerPoint Presentation. Note: All combined function together with Fn key cannot be executed at Multimedia

Chapter 4 Additional Information

■ **Specifications**

System

Frequency range : 2400~2483MHz

Remote range : Approx. 100 feet (30 meters) indoors,
328 feet (100 meters) outdoors

Operating voltage : Remote control: 2.5V~3.3V, Laser: 2.6V~3.3V

Power : AAA batteries * 2

Power : Normal operation <10mA

Laser operation < 20mA

Sleep < 10uA

Output power: Under 1mW

□ **Dimensions**

Presenter : 105 (H) x 40 (W) x 18 (D) mm

USB receiver : 49 (L) x 16 (W) x 3.5 (H) mm

Weight

Presenter : About 63.2 grams (include batteries)

USB receiver : About 2.6 grams

□ **Environmental Requirements**

Temperature :

Operating : 0°C (32°F)~60°C (140°F)

Non-operation : -10°C (14°F)~65°C (149°F)

Humidity(non-condensing) :

Operating : 10%~85% RH

Non-operating : 10%~95% RH

□ **Laser**

Semiconductor laser ($\lambda = 650 \text{ nm}$), emission duration : Continuous

Laser output power : Max.0.95 mW

Note: Design and specifications are subject to change without prior notice.

■ **Care and Maintenance**

- For cleaning, you are advised to use a soft, slightly moistened cloth.
- Avoid using solvents or abrasive substances.

- Do not open the presenter: for maintenance, consult qualified staff only.

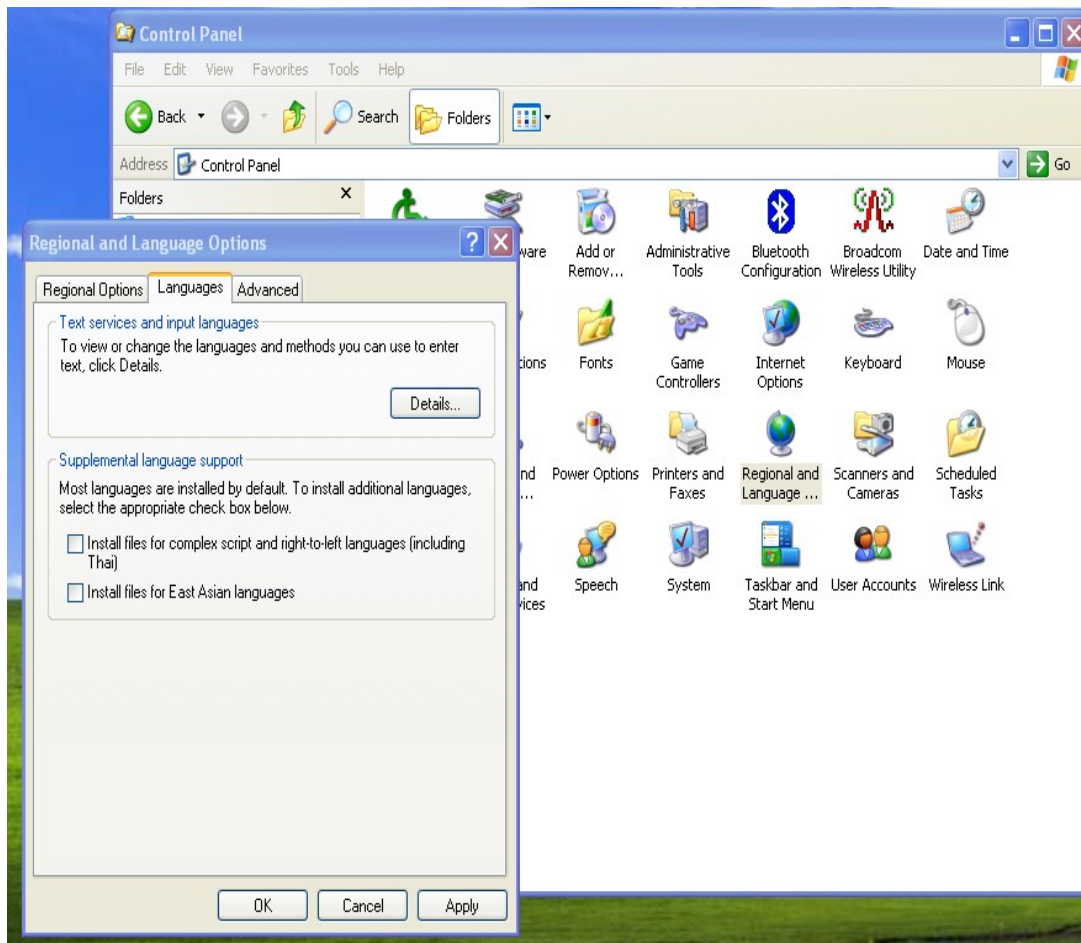
Trouble Shooting

Question	Possible cause	How to resolve
Need to install software for first use of this product?		No, this is a plug and play device.
Need to link ID before first use?		No need
Possible to use 2 or more of this product in a room at the same time?		Yes, but please implement ID Link in advance to avoid interference (see page 9 for how to link)
Laser pointer malfunction	<ol style="list-style-type: none"> 1. At Multimedia Play Mode 2. Forget to turn on laser pointer 3. Laser function has been automatically off after 30 minutes of idling time 	<ol style="list-style-type: none"> 1. Change to PowerPoint Presentation Mode (see page 9 for mode change) 2&3 To switch on the laser pointer (see page 8 for turn-on laser pointer)
Remote control malfunction	Interfered by other RF signal	To Implement ID Link (see page 9 for how to link)
Laser pointer and remote control both malfunction	Put batteries in wrong direction or run out of battery power	Check the batteries

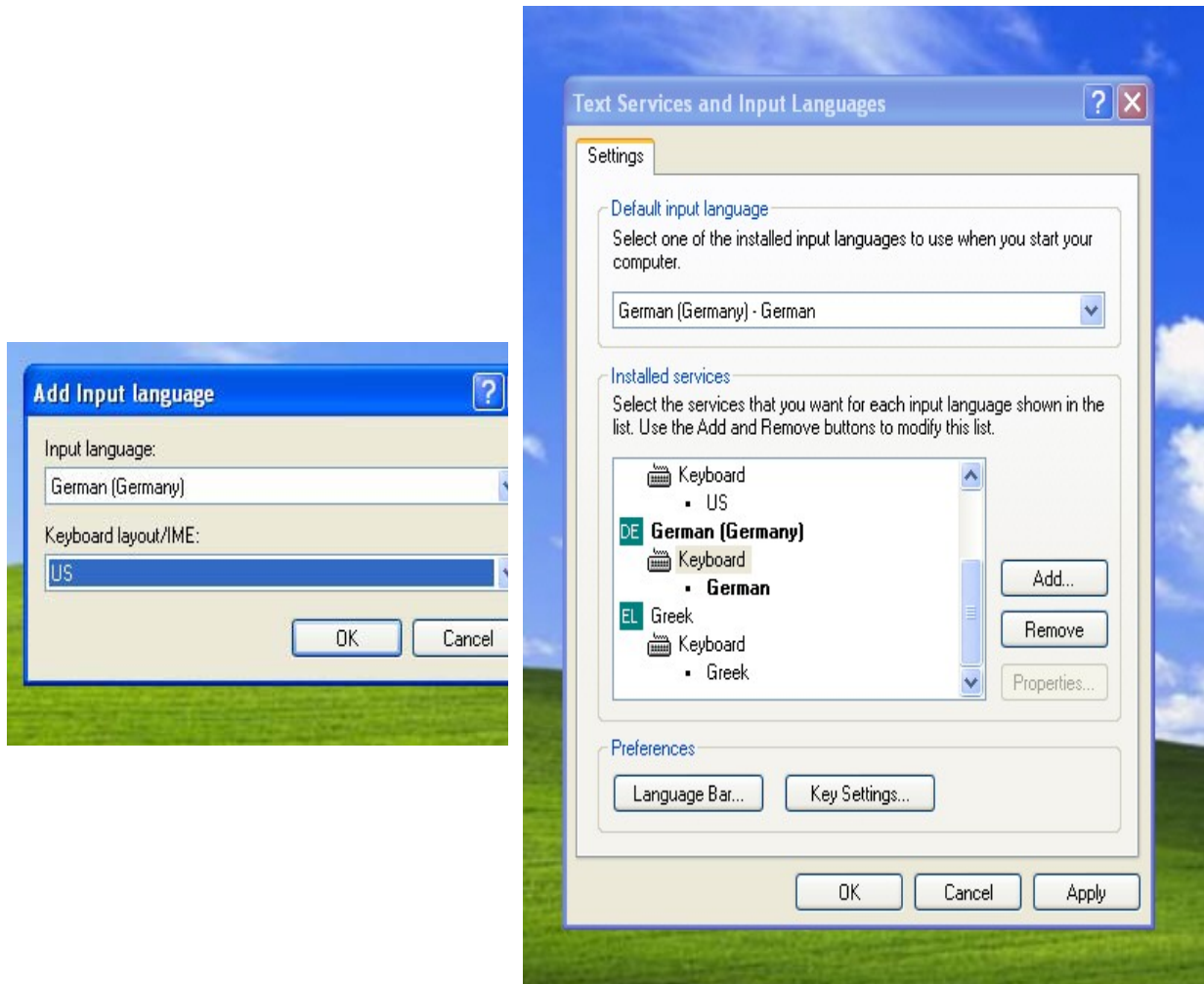
Special remark on using Multimedia Player function

This product is designed to support English keyboard. If you are using other language O/S, please conduct following change before using the multimedia function.

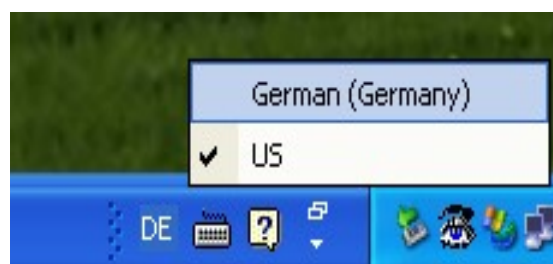
- (a) Go to " Control Panel" -> " Regional and language options" --> " Languages" → click “ **Details** “



- (b) Click “**Add**” and choose required language e.g. German at Input language and change Keyboard layout/IME to “US”.



- (c) Execute Mediaplayer e.g. PowerDVD or WinDVD etc.
(d) Move cursor inside the Mediaplayer screen to activate the full screen function.
(e) Select required language e.g. German and English keyboard layout.



Federal Communication Commission Interference Statement

This equipment has been tested and found to comply with the limits for a Class B digital device, pursuant to Part 15 of the FCC Rules. These limits are designed to provide reasonable protection against harmful interference in a residential installation. This equipment generates, uses and can radiate radio frequency energy and, if not installed and used in accordance with the instructions, may cause harmful interference to radio communications. However, there is no guarantee that interference will not occur in a particular installation. If this equipment does cause harmful interference to radio or television reception, which can be determined by turning the equipment off and on, the user is encouraged to try to correct the interference by one of the following measures:

- Reorient or relocate the receiving antenna.
- Increase the separation between the equipment and receiver.
- Connect the equipment into an outlet on a circuit different from that to which the receiver is connected.
- Consult the dealer or an experienced radio/TV technician for help.

FCC Caution: Any changes or modifications not expressly approved by the party responsible for compliance could void the user's authority to operate this equipment.

This device complies with Part 15 of the FCC Rules. Operation is subject to the following two conditions: (1) This device may not cause harmful interference, and (2) this device must accept any interference received, including interference that may cause undesired operation.

This transmitter must not be co-located or operating in conjunction with any other antenna or transmitter.