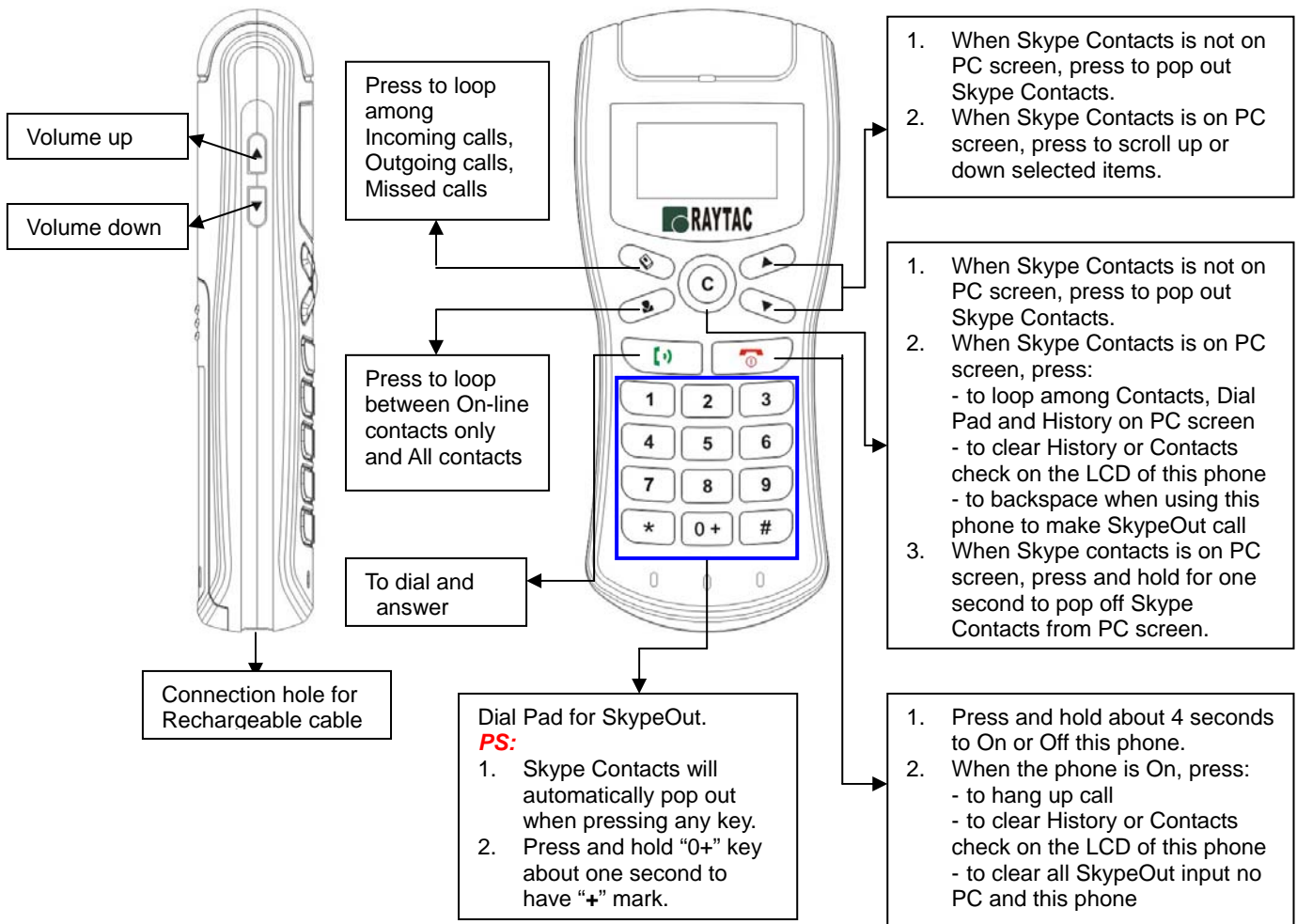


# Quick User Guide on Raytac 2.4GHz Wireless VoIP Phone

Date: Mar.21, 2006

## 1. Operation of Handset



## 2. Icon meaning on LCD display

### Top line on LCD display

- Phone connected to PC; - Phone disconnect to PC

- History, including - Missed calls, - Incoming calls, - Outgoing calls, - SkypeOut

- Contacts, - Online, - All (include Online and Offline)

- Hang up; - During dialing; - During speaking

- Volume indication

- Boost speaker volume (by pressing **volume up** key for 1 second); - Speaker mute (by pressing **volume down** key for 1 second)

- Phone user's status: Online, - Skype Me, - Away; - Not Available; - Do not disturb, - Invisible

**PS:** Pressing scroll down key for one second to display and change phone user's status.

- Battery power indication

### Second line on LCD display

- Contact is Online; - Contact is Offline

**PS:** Function or key icon might be changed without prior notice.

FCC Caution: Any changes or modifications not expressly approved by the party responsible for compliance could void the user's authority to operate this equipment.

This device complies with Part 15 of the FCC Rules. Operation is subject to the following two conditions: (1) This device may not cause harmful interference, and (2) this device must accept any interference received, including interference that may cause undesired operation.

The antenna(s) used for this transmitter must not be co-located or operating in conjunction with any other antenna or transmitter.